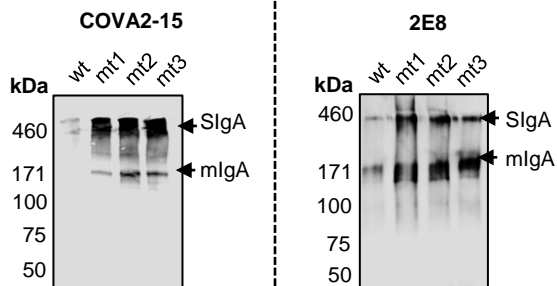
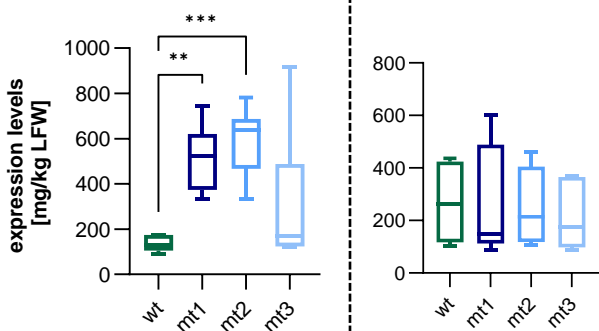


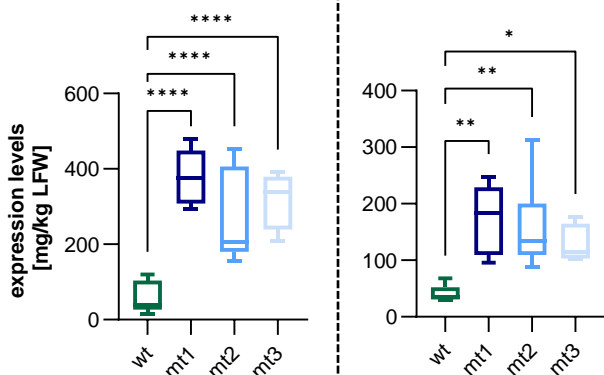
### A: Anti-IgA Immunoblotting



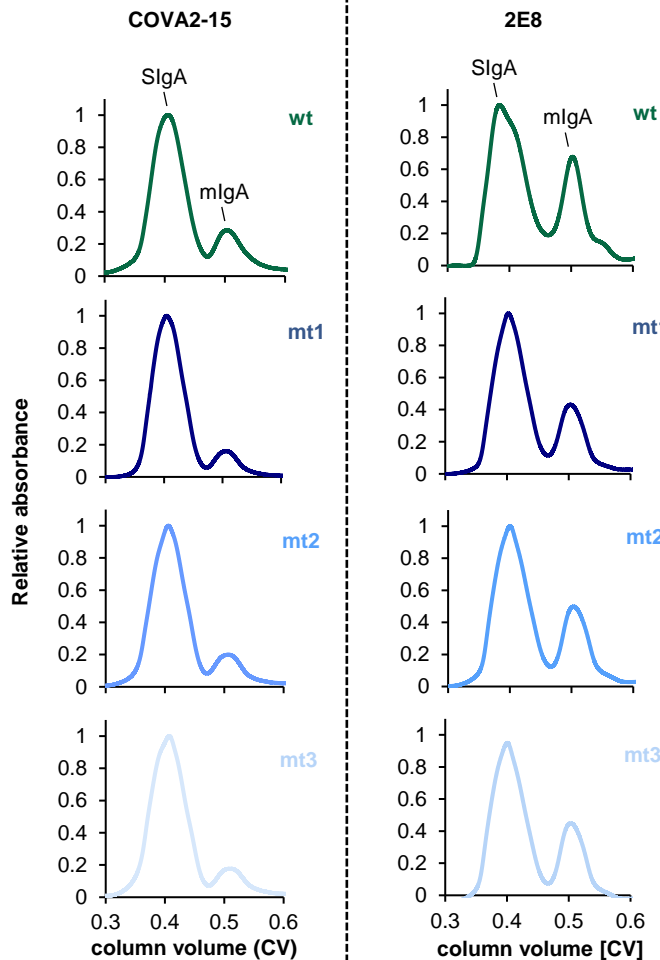
### B: total IgA



### C: fully-assembled SlgA



### D: Assembly efficiency



	SlgA [%]	mIgA [%]	SlgA :mIgA
WT	79.61	20.38	3.09
mt1	86.44	13.56	6.37
mt2	85.62	14.38	5.95
mt3	87.30	12.69	6.88

	SlgA [%]	mIgA [%]	SlgA :mIgA
WT	63.09	36.91	1.71
mt1	74.10	25.90	2.86
mt2	72.56	27.44	2.64
mt3	75.57	24.43	3.09