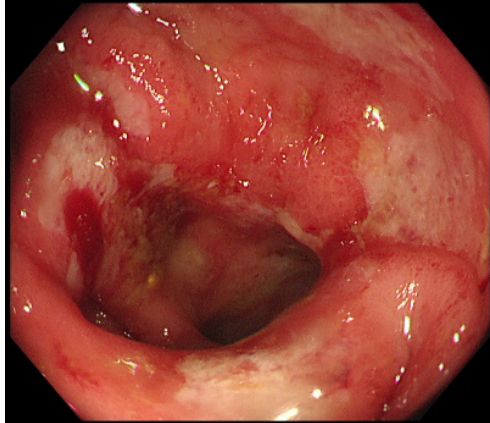
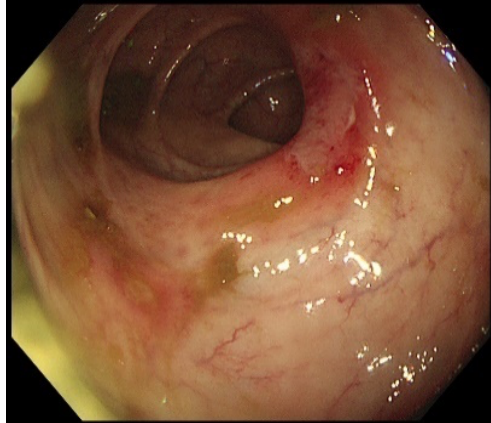


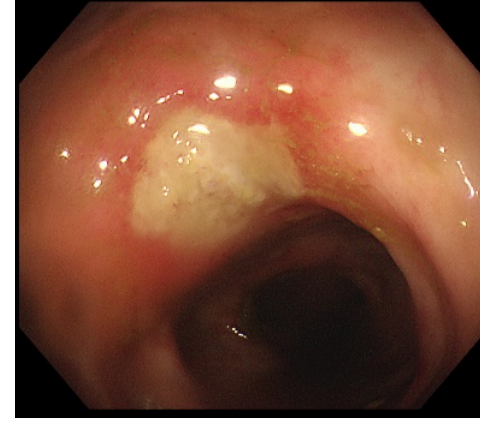
**Figure 2: Endoscopic appearances of amoebic colitis**



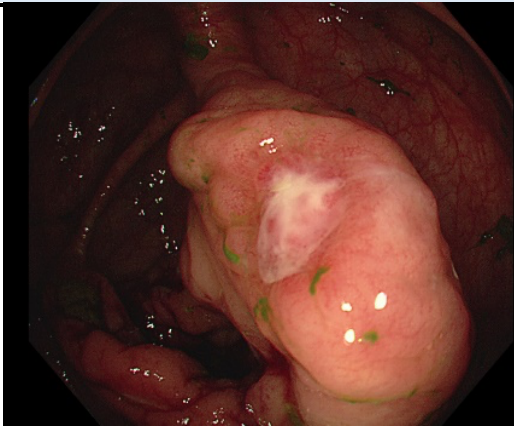
Caecum: mucosal erythema, ulceration, friability and contact bleeding



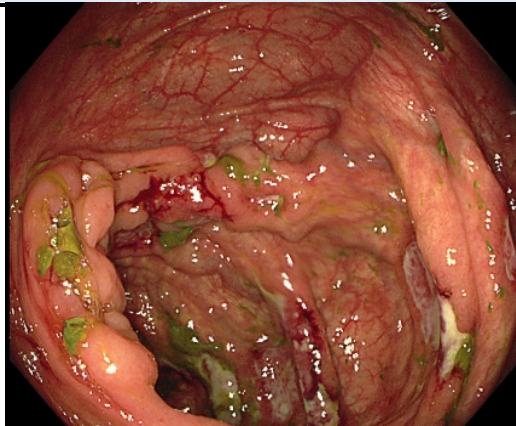
Transverse colon – superficial ulceration with normal surrounding mucosa



Splenic flexure – deeper ulceration raised edges



Caecum: ulcer overlying inflammatory "bump"



Caecum: scattered deep ulceration surrounded by normal mucosa



Caecum: deep ulceration with exudate