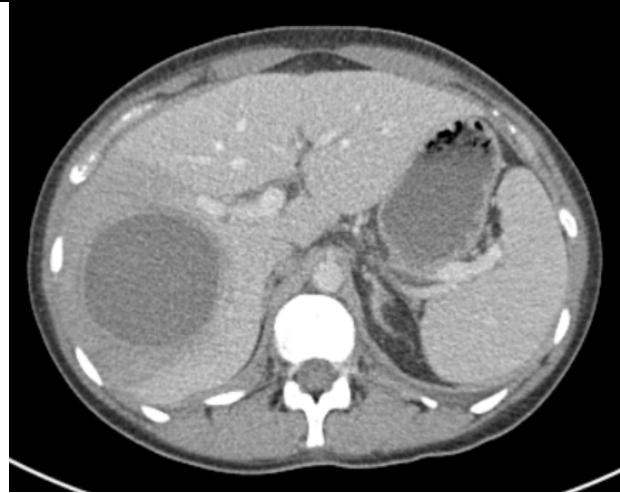


**Figure 4: Radiological features of amoebic liver abscess in a patient with right upper quadrant pain and weight loss**



CT abdomen, axial (L) and coronal (R) planes: thick walled homogeneous 7.8cm diameter collection in the right lobe of the liver with surrounding hypo-enhancement and adjacent branch portal venous occlusion.

US liver: 7.5cmx7cm intrahepatic mass in the right lobe of the liver with mixed internal echogenic and hypoechoic appearances and peripheral blood flow and no internal blood flow. The surrounding liver parenchyma is echogenic, consistent with inflammation.