

## REVIEW



# Cerebral Small Vessel Disease, Hypertension, and Vascular Contributions to Cognitive Impairment and Dementia

Atticus H. Hainsworth<sup>1</sup>, Hugh S. Markus<sup>2</sup>, Julie A. Schneider<sup>3</sup>

**ABSTRACT:** Hypertension-associated cerebral small vessel disease is a common finding in older people. Strongly associated with age and hypertension, small vessel disease is found at autopsy in over 50% of people aged  $\geq 65$  years, with a spectrum of clinical manifestations. It is the main cause of lacunar stroke and a major source of vascular contributions to cognitive impairment and dementia. The brain areas affected are subcortical and periventricular white matter and deep gray nuclei. Neuropathological sequelae are diffuse white matter lesions (seen as white matter hyperintensities on T2-weighted magnetic resonance imaging), small ischemic foci (lacunes or microinfarcts), and less commonly, subcortical microhemorrhages. The most common form of cerebral small vessel disease is concentric, fibrotic thickening of small penetrating arteries (up to 300 microns outer diameter) termed arteriolosclerosis. Less common forms are small artery atheroma and lipohyalinosis (the lesions described by C. Miller Fisher adjacent to lacunes). Other microvascular lesions that are not reviewed here include cerebral amyloid angiopathy and venous collagenosis. Here, we review the epidemiology, neuropathology, clinical management, genetics, preclinical models, and pathogenesis of hypertensive small vessel disease. Knowledge gaps include initiating factors, molecular pathogenesis, relationships between arterial pathology and tissue damage, possible reversibility, pharmacological targets, and molecular biomarkers. Progress is anticipated from multicell transcriptomic and proteomic profiling, novel experimental models and further target-finding and interventional clinical studies. (**Hypertension. 2024;81:75–86. DOI: 10.1161/HYPERTENSIONAHA.123.19943.**) •

**Key Words:** arteries ■ blood pressure ■ dementia ■ genetics ■ neuropathology ■ stroke ■ white matter

Cerebral small vessel disease (SVD) is the term used to describe a brain microvascular disease or syndrome that is common in older people and, depending on the definition, occurs in  $\approx 50\%$  of people aged over 65 years.<sup>1–4</sup> SVD is considered to be the primary cause of lacunar strokes.<sup>5–8</sup> It is also a major factor in vascular contributions to cognitive impairment and dementia (VCID).<sup>8–11</sup>

In clinical practice, SVD is diagnosed on the basis of hallmark radiological features seen on magnetic resonance imaging (MRI, eg, Figure 1)<sup>8,12</sup>: (1) subcortical small, focal infarcts, (2) diffuse white matter lesions, seen as white matter hyperintensities (WMH) on T2-weighted images, (3) less commonly, microhemorrhages in subcortical areas. Most ( $>95\%$ ) SVD is nonheritable, or sporadic,

although over 50 genetic loci associated with the risk of sporadic SVD have emerged from genome-wide association studies in recent years.<sup>13–15</sup> Heritable, monogenic forms of SVD include cerebral autosomal dominant arteriopathy with subcortical infarcts and leukoencephalopathy (CADASIL; due to mutations in *NOTCH3*), CARASIL (*HTRA1*), and collagen-IV (*COL4A1/COL4A2*).<sup>14</sup> Relative to the prevalent, sporadic SVD, these are rare, less strongly associated with hypertension and detected clinically in younger people, usually with more severe disease.

This review covers the sporadic forms of SVD that are associated with hypertension. In practice, this means 3 well-defined neuropathological lesions in cerebral small arteries: arteriolosclerosis, lipohyalinosis, and microatheroma (eg, Figure 2). Other forms of brain microvascular

This article is part of the Dementia Review Series.

Correspondence to: Atticus H. Hainsworth, Molecular and Clinical Sciences Research Institute, St George's University of London, Cranmer Terr, London SW17 0RE, United Kingdom. Email ahainsworth@sgul.ac.uk

For Sources of Funding and Disclosures, see page 83.

© 2023 The Authors. *Hypertension* is published on behalf of the American Heart Association, Inc., by Wolters Kluwer Health, Inc. This is an open access article under the terms of the [Creative Commons Attribution](https://creativecommons.org/licenses/by/4.0/) License, which permits use, distribution, and reproduction in any medium, provided that the original work is properly cited.

*Hypertension* is available at [www.ahajournals.org/journal/hyp](http://www.ahajournals.org/journal/hyp)

## Nonstandard Abbreviations and Acronyms

<b>AD</b>	Alzheimer disease
<b>BBB</b>	blood-brain barrier
<b>CAA</b>	cerebral amyloid angiopathy
<b>CADASIL</b>	cerebral autosomal dominant arteriopathy with subcortical infarcts and leukoencephalopathy
<b>MRI</b>	magnetic resonance imaging
<b>ROSMAP</b>	Religious Orders Study and Rush Memory and Aging Project
<b>SVD</b>	small vessel disease
<b>VCID</b>	vascular contributions to cognitive impairment and dementia
<b>WMH</b>	white matter hyperintensities

disease have been reviewed elsewhere.<sup>8,16,17</sup> Here, we will summarize the epidemiology, neuropathology, clinical management, genetics, and preclinical models of sporadic hypertensive SVD, ending with an overview of theories about pathogenesis.

## NOMENCLATURE

The nomenclature of SVD is confusing, often inexact and varies across subspecialties. SVD is used to refer to a myriad of small vessel abnormalities with or without downstream tissue injuries.<sup>4,8,18</sup> In diagnostic neuropathology, SVD often refers to arteriosclerosis and associated tissue lesions. In clinical practice, usage is usually limited to the tissue injury aspect, which can be visualized radiologically and is presumed due to brain microvascular disease (which can only be visualized under a microscope). More recently, enlarged perivascular spaces and microbleeds are sometimes included in the rubric. For the purposes of this review, the term SVD refers to hypertension-associated sporadic forms of brain microvascular disease unless stated otherwise.

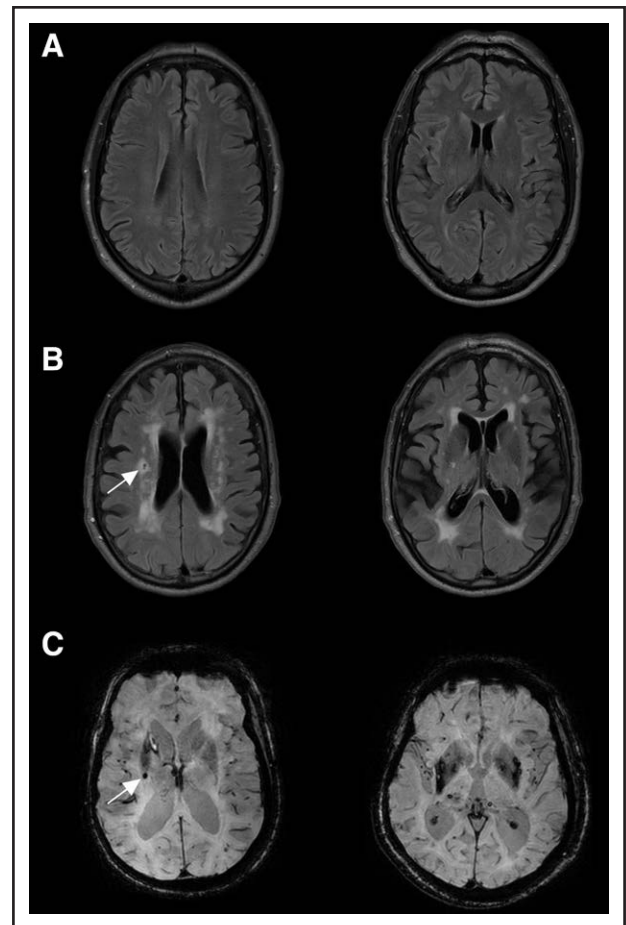
## METHODS

This review is based on the authors' knowledge, with expertise related to SVD in cellular and in vivo neuroscience (A.H.H.), clinical management, imaging and genetics (H.S.M.), neuropathology, and epidemiology (J.A.S.). References are derived from the authors' archives and PubMed searches.

## EPIDEMIOLOGY OF SVD AND VCID

### ROSMAP Cohorts

Because SVD nomenclature varies across disciplines and the underlying vessel pathologies are only visualized on brain tissue, the prevalence of SVD is difficult to estimate



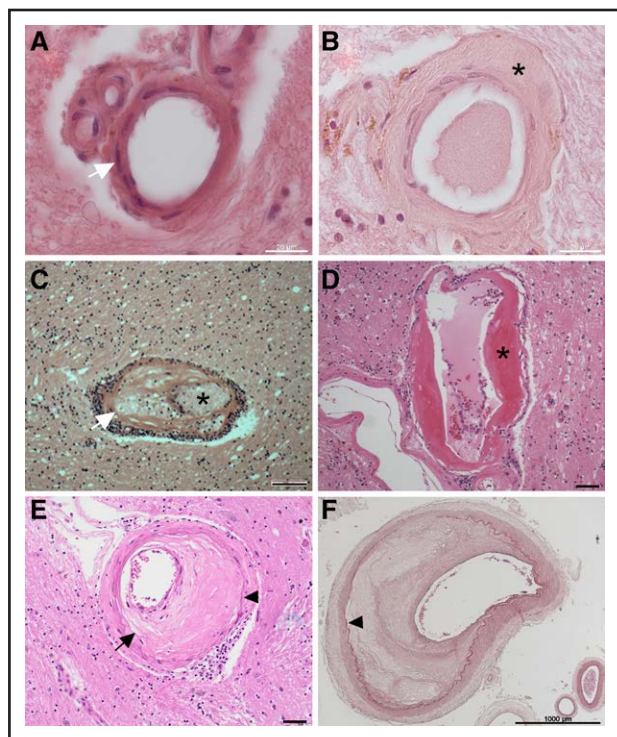
**Figure 1. Magnetic resonance imaging (MRI) evidence of small vessel disease (SVD).**

**A**, Fluid-attenuated inversion recovery (FLAIR) MRI scans of an older patient with minimal white matter hyperintensities. **B**, FLAIR MRI scans from equivalent areas of another older patient with extensive white matter hyperintensities and a cavitated lacune (arrow). **C**, Susceptibility-weighted images from 2 different patients with SVD, showing multiple microbleeds (eg, marked with an arrow).

with certainty. The Religious Orders Study and Rush Memory and Aging Project (ROSMAP) are large clinicopathologic studies of older people enrolled without known dementia, with annual clinical assessments and agreement to brain donation at death (Table 1). In the ROSMAP studies, with over 1700 donated brains, the severity of arteriosclerosis is determined at the level of the anterior basal ganglia. With an average age of death at about 90 years, SVD is highly prevalent, with about one-third of the cohort showing moderate-to-severe arteriosclerosis.<sup>3,11,29</sup> Prevalence of hypertension in ROSMAP is 67% to 69% with some variation as the cohort grows.<sup>3</sup> ROSMAP participants are predominantly White (90%–95%).

### SVD Epidemiology

In the ROSMAP cohort, arteriosclerosis is most significantly associated with elevated blood pressure and age.<sup>30</sup> Arteriosclerosis is more common in women, but



**Figure 2. Small arterial vessels in human brain: examples of hypertensive small vessel disease.**

**A**, A normal, healthy penetrating artery with thin wall and multiple myocyte nuclei (eg, marked with arrow). **B**, Arteriolosclerosis, with approximately concentric wall thickening, with acellular hyaline material (asterisk). **C**, Lipohyalinosis, with asymmetrical wall thickening around the lumen (\*) and mural lipid-containing macrophages (arrow). **D**, Fibrinoid necrosis in a larger penetrating vessel. The wall is asymmetrical thickened with eosinophilic fibrinoid material (\*). **E**, Microatheroma in a penetrating vessel. Asymmetrical thickening and cholesterol clefts are seen as open slits (arrow) in the intimal layer. Internal lamina is visible (arrowhead) delimiting the intima. **F**, For comparison, large vessel atheroma in a leptomeningeal artery, with internal lamina clearly visible (arrowhead). Hematoxylin and eosin staining. Scale bars: **A** and **B**, 20 microns, **C** through **E**, 50 microns, **F**, 1000 microns. **C** and **D** were kindly supplied by Professor Colin Smith, University of Edinburgh.

this is difficult to dissociate from longevity in women.<sup>31</sup> Severity of arteriolosclerosis has been noted to be more severe in African Americans.<sup>32</sup> Microvascular disease is common in people with Alzheimer disease (AD) pathology, and the association with AD and other neurodegenerative pathologies may be complex. Arteriolosclerosis is related to Alzheimer type dementia but this may be partly through the associated and added tissue injury in the parenchyma.<sup>33</sup>

Many people with arteriolosclerosis also have large vessel atherosclerosis, which is also common in older people. About 30% of older people have moderate-to-severe large vessel atherosclerosis.<sup>11</sup> Similar to arteriolosclerosis, both age and blood pressure are strong risk factors for atherosclerosis, and downstream consequences can include various tissue injuries, including white matter changes and infarct (the latter often larger than in arteriolosclerosis).

While definitions of SVD pathology vary, similar patterns of prevalence have been seen in other large cohorts<sup>1,27</sup> (Table 1).

## VCID Epidemiology

Blood pressure is an established risk factor for dementia, with risk accruing in midlife not just in old age. Hypertension contributes to cognitive impairment through pathways independent of symptomatic stroke. This extensive topic is well covered in recent reviews.<sup>34,35</sup>

Arteriolosclerosis is consistently related to dementia in older people. Although strongly associated with hypertension, arteriolosclerosis is not exclusively seen in hypertension and is also seen in aging and diabetes.<sup>36</sup> One of the pathways by which arteriolosclerosis may contribute to dementia is via small microinfarcts in the aging brain.<sup>37</sup> In a pathway analysis of the neuropathological features that mediate the association of age with dementia in the ROSMAP cohort, about 30% of the association was related to vascular pathways.<sup>38</sup>

Most studies have shown that the contribution of SVD to cognitive impairment is additive, rather than synergistic, with that of AD pathology (amyloid and tangles).<sup>26,39</sup> Even after accounting for infarcts, arteriolosclerosis has an added contribution to dementia and to multiple domains of cognitive impairment.<sup>40</sup>

## NEUROPATHOLOGY OF SVD

### Vessel Pathology

The 3 main forms of hypertensive SVD are compared in Table 2 (see examples in Figure 2). In the landmark serial sectioning studies of Fisher<sup>5,45–47</sup>, 2 vascular lesions were identified upstream from lacunes: lipohyalinosis and atheroma in small penetrating arteries (microatheroma). These 2 are now rarely seen in diagnostic neuropathology or in brain autopsy series. This may be due to the widespread use of blood pressure medications,<sup>36</sup> or the fact that we do not deliberately sample them. Still common is a third lesion, seen in the smallest penetrating arteries (up to 0.3 mm outer diameter), termed arteriolar sclerosis or arteriolosclerosis (small artery stiffening).<sup>6,7,36</sup> It appears likely that Fisher and some earlier neuropathologists, who did not have access to MRI, immunohistochemistry, or genetic data, considered arteriolosclerosis a part of normal brain aging.<sup>41,47,49</sup> More recent brain series have associated arteriolosclerosis with hypertension,<sup>36,43</sup> WMH load,<sup>44,50</sup> incidence of lacunar stroke,<sup>43</sup> VCID and dementia.<sup>9–11</sup>

### Lipohyalinosis

Lipohyalinosis was identified by Fisher<sup>5,46</sup> as the causal lesion upstream from 40 of 50 lacunes, in brains from 4 people with severe hypertension. Lipohyalinosis describes small arteries whose walls exhibited loss

**Table 1. Prevalence of SVD and Associations With VCID in Large Autopsy Series (N=500 or More Brains)**

Study acronym	No. of brains, n (location)	Prevalence of SVD	Associations with VCID
ROSMAP	1767 (the United States)	Arteriosclerosis present in 33.5% of cases <sup>11</sup> ; microinfarct in 29.4% <sup>11</sup> (compare large vessel atherosclerosis in 33.1%, <sup>11</sup> gross infarcts in 28% of cases <sup>19</sup> )	Arteriosclerosis OR of AD dementia: 1.20. For each categorical increase in severity (absent, mild, moderate, severe <sup>19</sup> ); compare AD pathology OR: 4.40; microinfarct RR for dementia: 1.8 for dementia (compare AD pathology RR: 4.0) <sup>20</sup>
Hisayama	1266 (Japan)	Small infarcts found in 27.9% of cases <sup>21</sup> ; fibrinoid necrosis: present in 17% of cases in 1971; 6% of cases in 1981 <sup>21</sup>	135/389 (35%) of dementia cases were vascular dementia (unclear how defined) <sup>22</sup>
BB-BABS	1089 (Brazil)	Hyaline arteriosclerosis present in 10.7% of people aged <80 years, 20.9% of those aged ≥80 years <sup>23</sup>	Hyaline arteriosclerosis OR for cognitive impairment: 2.36 (in people aged <80 years), 1.86 (age ≥80 years) <sup>23</sup>
ACTS	863 (the United States)	Cerebral microinfarcts present in 15.1% of cases <sup>24</sup>	Microinfarct RR for dementia: 4.80 (compare tau pathology [Braak stage V–VI], RR: 5.89) <sup>25</sup>
HAAS	852 (males only; Hawaii, the United States)	Lacunae and microinfarcts present in 18.0% of cases <sup>26</sup>	Microinfarct OR: 2.58 for cognitive impairment <sup>27</sup>
MRC-CFAS	510 (United Kingdom)	Lacune(s), SVD and deep white matter lesions present in 37% of cases <sup>28</sup>	SVD RR for dementia: 2.69 at age 75 years (compare hippocampal tangles RR: 8.61) <sup>1</sup>

ACTS indicates Adult Changes in Thought Study; AD, Alzheimer disease; BB-BABS, Brain Biobank of the Brazilian Aging Brain Study; HAAS, Honolulu Asia Aging Study; MRC-CFAS, Medical Research Council Cognitive Function and Ageing Study; OR, odds ratio; ROSMAP, Religious Orders Study and Rush Memory and Aging Project; RR, risk ratio; SVD, small vessel disease; and VCID, vascular contributions to cognitive impairment and dementia.

of myocytes, fibrosis, and fatty macrophages with lipid deposits<sup>5</sup> (Figure 2C). The lesion is eccentric, extending along a short segment of the vessel wall (hence the term segmental disorganization).<sup>5,47</sup> The wall contains an eosinophilic deposit termed fibrinoid.<sup>5,51</sup> Fibrinoid necrosis in the vessel wall (Figure 2D) is a feature of lipohyalinosis, found most commonly in uncontrolled or malignant hypertension. Fibrinoid necrosis may be a transitory status for the vessel. The weakening of the wall may result in a Charcot-Bouchard aneurysm, with or without hemorrhage. Although originally thought to be specific to hypertension,<sup>5</sup> lipohyalinosis is also (uncommonly) seen in the brains of people without hypertension.<sup>36</sup> Lipohyalinosis is considered a more acute or severe form of SVD that has

been suggested to transition into end-stage fibrosis or arteriosclerosis.

### Microatheroma

Microatheroma refers to atherosclerosis in larger small arteries (approximate range, 0.3–0.8 mm outer diameter) analogous to that frequently detected in large arteries (such as the carotids or middle cerebral artery) of older people with hypertension. It features local, eccentric lipid deposits in the vessel wall, with myocyte loss and fatty macrophages (foam cells) in the wall<sup>5,6</sup> (Figure 2E). Fibrinoid necrosis is not a feature. Microatheroma in the parent vessel at the origin of the perforating artery, or in the proximal larger perforator arteries themselves,

**Table 2. Comparing Different Neuropathological Forms of Hypertensive SVD**

Type of SVD	Vessel type	Anatomic location	Prevalence associated with hypertension?	Pathological features
Arteriosclerosis	Small penetrating arteries, arterioles (OD: 20–300 microns)	Subcortical, deep WM, periventricular WM, deep gray nuclei	Common in older people <sup>3,10,41,42</sup> ; associated with HTN: yes. <sup>10,36,43</sup> ; associated with lacunar lesions <sup>36,43</sup> ; associated with VCID <sup>9–11</sup>	Symmetrical, concentric arterial fibrosis. Myocyte loss, with endothelia spared. Often hyalinosis in the vessel wall. No mural lipid <sup>8,36,41,44</sup>
Lipohyalinosis	Small penetrating arteries, arterioles (OD: 80–300 microns)	Subcortical, deep WM, periventricular WM, deep gray nuclei	Rare; associated with HTN: yes <sup>5</sup> ; associated with lacunar lesions <sup>5,45,46</sup>	Local, asymmetrical loss of structure in artery wall (segmental arterial disorganization). <sup>5</sup> Mural lipid and eosinophilic material (fibrinoid). Fibrinoid necrosis is a feature. <sup>5,6,46,47</sup> A severe lesion, now rarely seen. May progress to vessel wall fibrosis as described in arteriosclerosis.
Microatheroma	Small distributor and larger penetrating arteries (OD: 300–800 microns)	Cortical and subcortical	Prevalence is uncertain; associated with HTN: yes; associated with lacunar lesions. <sup>5,45,46,48</sup>	Nonconcentric; loss of myocytes, asymmetrical thinning of arteriole wall. Dissecting. Myocyte degeneration, macrophage infiltration. Abundant mural lipid <sup>5,6,46</sup>
CAA	Lepto-meningeal and penetrating arteries. In some cases, also capillaries	Cortical gray matter. Not in subcortical WM	Common in older people; associated with HTN: no	Deposition of insoluble amyloid, primarily Aβ40, less Aβ42. Not always concentric. Fibrinoid necrosis an occasional feature. <sup>17</sup>

CAA is included for comparison. CAA indicates cerebral amyloid angiopathy; HTN, hypertension; SVD, small vessel disease; VCID, vascular contributions to cognitive impairment and dementia; and WM, white matter.

has been associated with lacunar stroke.<sup>5,6,46</sup> It is usually associated with larger lacunar stroke, often isolated, and without prominent WMH.<sup>48</sup> Microatheroma has been associated with an atherogenic risk factor profile, in contrast with the predominant role of hypertension in arteriolosclerosis.

Although microatheroma is now a rare finding in diagnostic neuropathology (at least in higher-income countries), we cannot assume it is absent. Intracranial atherosclerotic stenosis was detected in 45% of a large, older cohort in a recent magnetic resonance angiography imaging study.<sup>52</sup> Microatheroma favors arterial branch points, for example, at the perpendicular origin of MCA-derived perforators, a location rarely sampled in a histopathology block. It seems reasonable to assume, as Fisher did, that an individual with severe large vessel atheroma (Figure 2F) has a high likelihood of microatheroma. A dedicated histological study to assess microatheroma as a risk factor for human stroke, SVD, and VCID would be valuable.

A belief persists that microatheroma is more common in some racial groups, specifically African Americans (see a classic study by Caplan et al<sup>53</sup>, and early references therein). While there is heterogeneous evidence around this concept, non-white brain archives will allow it to be tested.<sup>54</sup>

### Arteriolosclerosis

Arteriolosclerosis is a fibrous, hyaline thickening of small penetrating arteries in subcortical areas (subcortical and periventricular white matter and deep gray nuclei). Hypertension and old age are strong risk factors, with poor glucose control, elevated plasma homocysteine, and tobacco smoking also implicated. Links to hyperlipidemia are less well evidenced.

In arteriolosclerosis, there is a lack of lipid deposition in the walls of SVD-positive vessels (in contrast to lipohyalinosis and microatheroma<sup>67</sup>). Afflicted vessels are up to 300 microns outer diameter, characterized by concentric acellular layers of fibrous material<sup>67</sup> (Figure 2B; Figure 3). The endothelial layer remains intact and appears paradoxically healthy<sup>55</sup> alongside depletion of myocytes in the vessel wall<sup>67,56</sup> (Figure 3B and 3C). The degree of wall thickening manifests to varying degrees along the length of a vessel.<sup>17,57</sup> Luminal narrowing is not a universal feature,<sup>58</sup> though striking examples are sometimes seen (Figure 3D and 3E).<sup>57</sup>

No serial sectioning study has been performed to test directly whether arteriolosclerosis is linked to lacune formation (or other manifestations of SVD, such as diffuse white matter damage). Based on vessel wall thickening and fibrosis, some dysfunction in CBF autoregulation is likely, making downstream hypoperfusion damage biologically plausible.<sup>6,59</sup> The severity of arteriolosclerosis is increased within WMH<sup>60</sup> and correlates with number of lacunes.<sup>43</sup> In 1997, Lammie et al<sup>36</sup> demonstrated that arteriolosclerosis was common in 70 consecutive SVD cases (whereas lipohyalinosis and microatheroma were

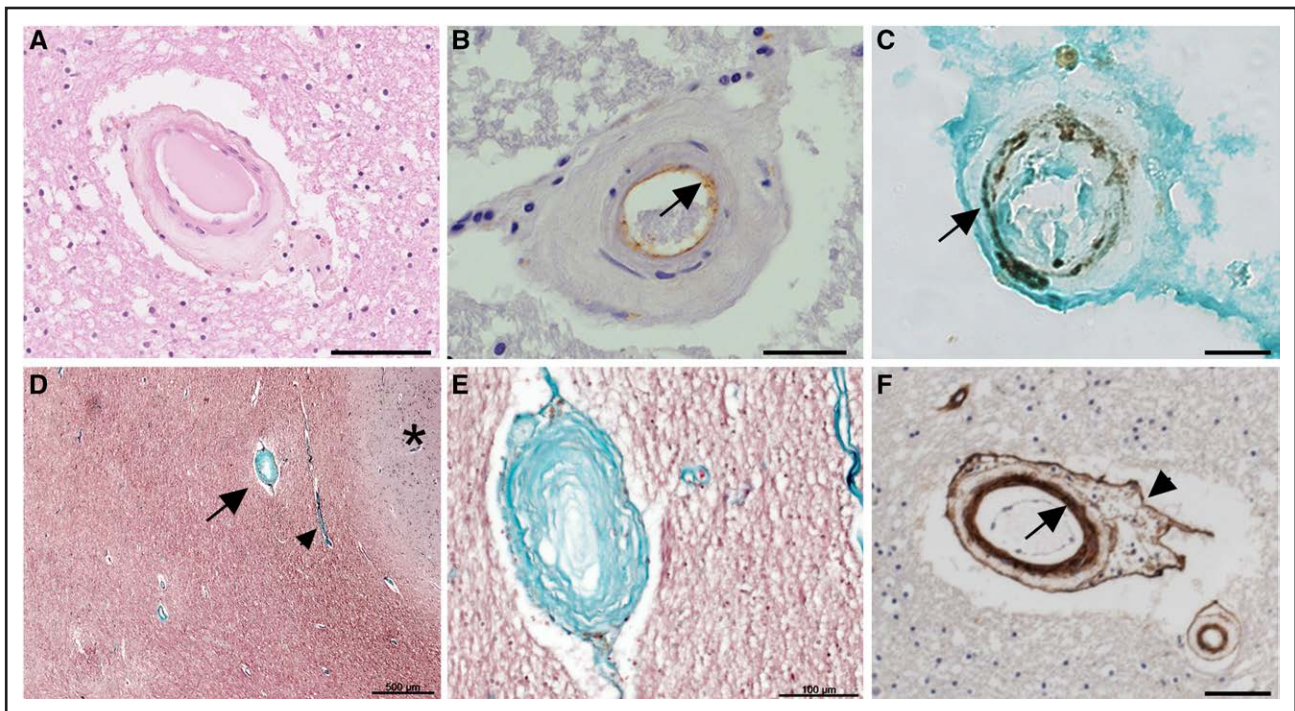
not). Overall, we consider it likely that arteriolosclerosis is a cause of symptomatic SVD, indeed a common cause.

Immunohistochemical studies indicate that the mural fibrosis in arteriolosclerosis is due to deposition of the fibrillar collagen types I and III, not the nonfibrillar basement membrane type IV.<sup>44</sup> The basement membrane components collagen-IV $\alpha$ 1/IV $\alpha$ 2 are genetically associated with sporadic SVD, their expression is restricted to the subendothelial region, often in multilaminar layers, and also to an adventitial layer encasing the vessel<sup>44</sup> (Figure 3F). The endothelia of afflicted vessels are strongly positive for thrombomodulin (Figure 3B) indicating a highly anticoagulant lumen and ICAM1 (Intercellular Adhesion Molecule-1) negative.<sup>61</sup> This is the antithesis of an activated endothelium and speaks against local vascular inflammation as a feature of arteriolosclerosis.<sup>61</sup> Most neuropathology studies<sup>62–64</sup> have found no association of SVD with local blood-brain barrier (BBB) dysfunction. This conflicts with some imaging findings<sup>65–68</sup> and does not exclude a role for BBB changes in early phases of the disease process.

In comparison, cerebral amyloid angiopathy (CAA) is not related to hypertension or other traditional vascular risk factors (Table 2). CAA is associated with age, AD pathology, and the *APOE* e4 allele, a well-known risk factor for AD. CAA, which frequently accompanies AD-related amyloid plaques, is restricted primarily to cortical gray matter, sparing subcortical white matter<sup>69</sup> (whereas lipohyalinosis and arteriolosclerosis are subcortical). Similarly, CAA is related to microinfarcts and microbleeds in the neocortex (rather than in white matter). CAA is reviewed elsewhere.<sup>8,17</sup>

### Parenchymal Pathology

While the pathological features that result from SVD are still debated, the following are generally agreed. First, small (<15 mm greatest diameter) ischemic foci or lacunes (from the Latin lacuna, meaning a hole or pond). Old lacunes can be seen as a cavity, slit, or scar, fluid-filled in vivo (Figure 1B) encased by a layer of fibrous reactive astrocytes with scattered remaining macrophages, variable microgliosis, and sparse if any lymphocytes (Figure 4D). Second, focal or diffuse white matter changes, with pallor and reduced tissue density, suggestive of edema (during acute stages) and some degree of demyelination in chronic, severe lesions (Figure 4A through 4C).<sup>18,70,71</sup> These are presumed to correspond to WMH seen on MRI scans<sup>50</sup> (Figure 1B). A parenchymal feature that is topologically linked with small penetrating arteries is hyperphosphorylated neurofilament-H within axonal bulbs (Figure 4E).<sup>72</sup> Other features include subcortical iron deposits, some of which represent microhemorrhages (Figure 1C), but also possibly perivascular extravasation, detected in MRI scans of some older people with sporadic SVD<sup>17</sup> (Figure 4F). In hypertension,



**Figure 3. Histopathology of arteriolosclerosis.**

Small penetrating arteries in subcortical white matter. **A**, Arteriolosclerosis, with hyaline, fibrotic wall thickening, and depleted, swollen myocytes. HE stain. **B**, The endothelial cell layer is preserved, immunolabeled with thrombomodulin (brown, arrow). **C**, Depletion of myocytes, immunolabeled with smooth muscle myosin (black, arrow). Light green counterstain. **D** and **E**, Collagenous fibrosis (green) in the vessel wall, Masson trichrome stain. **D** shows a severely fibrotic vessel (arrow), close to another that exhibits no fibrosis (arrowhead), adjacent to the cortical gray matter (marked with \*). In **E**, the fibrotic vessel is enlarged. **F**, Collagen type IV  $\alpha 1/\alpha 2$  immunolabeling shows duplication of the intimal basal lamina (brown, arrow), maintained adventitial layer (arrowhead), and absence of type IV collagen in the hyaline fibrotic media. Scale bars: 50 (**A**), 20 (**B**), 50 (**C**), 500 (**D**), 100 (**E**), and 50  $\mu\text{m}$  (**F**).

microhemorrhages are usually seen in subcortical gray or white matter. Recent reviews have discussed relationships between pathological aspects of different forms of SVD and the characteristic features seen on MRI.<sup>17,18,66</sup>

## CLINICAL MANAGEMENT OF SVD

The most important clinical features of SVD are lacunar stroke and vascular cognitive impairment, encompassing dementia.<sup>8,12</sup> We now realize that SVD is also a major cause of intracerebral hemorrhage.<sup>8</sup> SVD is associated with subcortical microbleeds seen on T2\* or susceptibility-weighted MRI scans<sup>73</sup> and is a risk factor for subcortical intracerebral hemorrhage.<sup>74</sup> Other clinical presentations include gait disturbance, apathy and other neurobehavioral symptoms, and a non-Levodopa responsive Parkinsonian syndrome. Particularly prominent features of the cognitive impairment include executive dysfunction and impaired processing speed.<sup>75</sup>

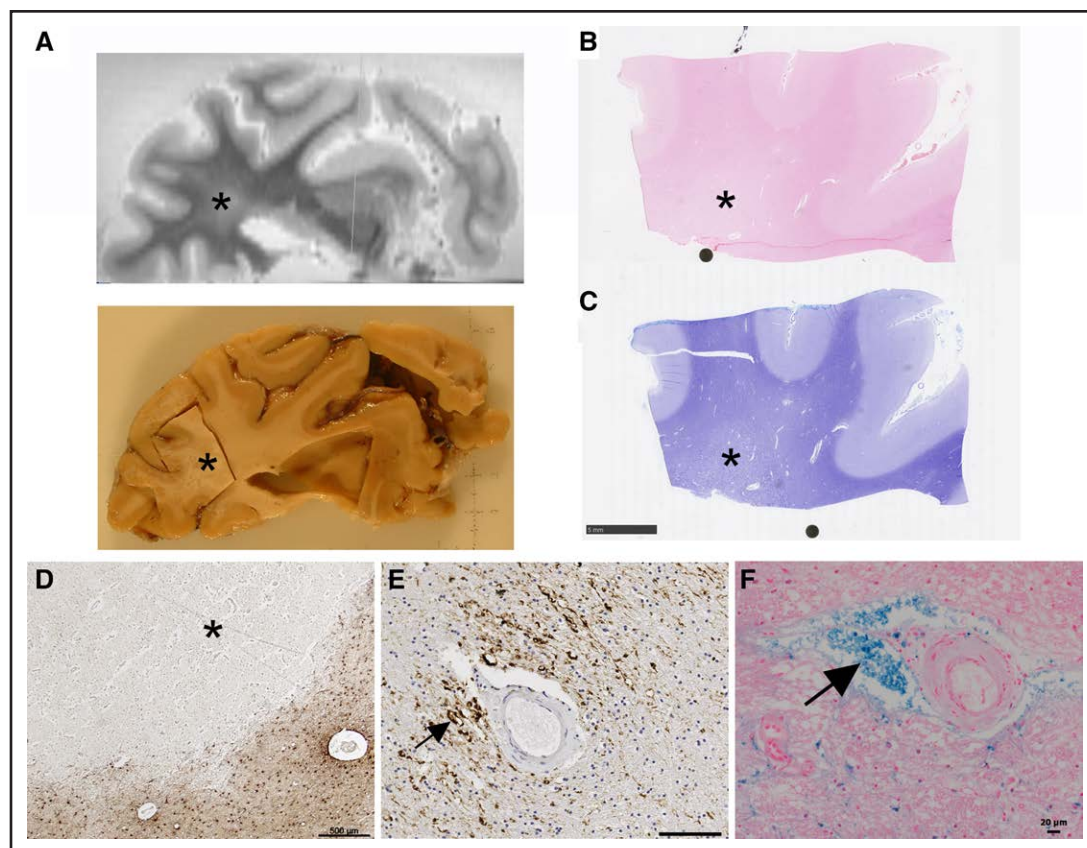
## BP Control, SVD, and VCID

Intensive BP lowering as a strategy to reduce risk of cognitive impairment is supported by several clinical studies.<sup>76,77</sup> Data from over 9000 older Americans

indicated that this effect was most evident in the oldest-old and was not driven by any specific drug class.<sup>77</sup> In other words, reduced systemic pressure was sufficient to produce cognitive benefit. The small but significant reduction in WMH progression suggests that this effect is accompanied by amelioration of SVD.<sup>78</sup>

Despite its public health importance, there are few specific treatments for SVD.<sup>79,80</sup> Most of the clinical trials looking at secondary prevention of stroke have not adequately subtyped SVD to allow us to know how useful they are in SVD. The one exception is blood pressure, for which clinical trial data show that intensive treatment reduces the risk of further stroke and probably also the risk of vascular cognitive impairment<sup>81</sup> and that this strategy appears to be safe in patients with severe SVD in whom autoregulation may be affected.<sup>82</sup> Epidemiological evidence suggests that there is a greater benefit from treating hypertension in midlife than in later life, particularly for the prevention of dementia.<sup>83</sup> Antiplatelet agents are widely used in SVD although there are limited data on which to base this decision. A multi-center phase-3 trial demonstrated that aspirin alone was preferable to dual antiplatelet therapy with aspirin and clopidogrel in long-term secondary prevention.<sup>84</sup>

Two major factors underlie our lack of knowledge about treatments in SVD and VCID.<sup>79,80</sup> The first has



**Figure 4. Parenchymal lesions associated with small vessel disease.**

**A**, Ex vivo magnetic resonance imaging-directed tissue sampling of a frontal cortical block containing white matter hyperintensity (marked with \*) from the Rush archive. **B** and **C**, The block from **A**, stained with hematoxylin-eosin (**B**) and Luxol fast blue (**C**), showing white matter pallor (\*). **D**, In another case, astrocytes immunolabeled with GFAP (glial fibrillary acidic protein) (brown) around the border of a microinfarct (\*). **E**, Axonal bulbs (arrow), immunopositive for hyperphosphorylated neurofilament-H (brown), centered around a small penetrating artery. **F**, Microhemorrhage (marked with arrow) labeled with Perl's stain, around a small artery. Scale bars: **B** and **C**, 5 mm. **D**, 500 microns. **E**, 100 microns. **F**, 20 microns.

been inadequate knowledge about the underlying pathophysiology and potential treatment targets. This situation is improving with genetic studies and other advances.<sup>14,79</sup> The second is a lack of adequate subtyping in clinical trials, to determine whether treatments are efficacious in definite SVD. Recent phase II clinical trials have tested existing medications for possible repurposing in people with symptomatic SVD. These include the PDE5 (phosphodiesterase-5) inhibitor tadalafil<sup>85</sup> and the combination of cilostazol with a NO donor.<sup>86</sup> Sets of criteria for the definition of SVD for clinical trials, and for finding targets for intervention, have been published.<sup>87,88</sup> Recent guidelines have been developed to provide a framework for optimal trial design in SVD, including choice of outcome measures.<sup>89</sup>

### Genetics of SVD

In discussing genetic factors in sporadic SVD, it is instructive to consider monogenic, familial forms of SVD. A number of different underlying genes have been described but by far the most common is CADASIL,

caused by *NOTCH3* mutations. The second most common is CADASIL2 caused by autosomal dominant *HTRA1* mutations.<sup>90</sup> *HTRA1* is also the gene underlying CARASIL (with autosomal recessive inheritance). Major clinical features of both CADASIL and CADASIL2 include migraine with aura, early-onset lacunar stroke, encephalopathy, depression, and early-onset dementia. MRI features are similar to those of sporadic SVD but WMH are often severe at a younger age and frequently seen in the anterior temporal poles and the corpus callosum, which are rarely affected in sporadic SVD. Microbleeds occur in both CADASIL and CADASIL2 but are particularly frequent in the *COL4A1/2* monogenic forms of SVD, which also frequently present with intracerebral hemorrhage.<sup>91</sup>

Genetic risk is also important for sporadic SVD, but here common variants or polymorphisms in multiple genes are thought to each confer a small increase in risk. To date, over 50 independent genetic loci have been associated with SVD at the genome-wide significance level, including loci associated with lacunar stroke<sup>13</sup> and with covert, MRI-defined SVD.<sup>14,15</sup> The genes identified

point to a major role of blood pressure–related pathways, and also mechanisms that seem independent of vascular risk factors, particularly ECM (extracellular matrix) structure and function. Future use of high-throughput molecular approaches (epigenomics, transcriptomics, proteomics, and metabolomics) will enable integration of genetic associations with functional data to decipher the biological roles of genetic risk loci in SVD.<sup>14</sup>

Genetic studies in sporadic SVD are highlighting novel disease processes and potential therapeutic pathways. A key target appears to be the ECM and proteins of the matrisome,<sup>92</sup> defined as the ensemble of 1000+ genes encoding ECM-associated proteins. *NOTCH3* and *HTRA1* mutations seem to cause ECM disruption by converging pathways, while *COL4A1/2* mutations result in disruption of the collagen-IV matrix essential for ECM integrity.<sup>92</sup> Increasing evidence suggests monogenic and sporadic SVD share disease mechanisms; common variants in both *HTRA1* and *COL4A1/2* have been associated with both sporadic lacunar stroke and WMH.<sup>13,15</sup>

The boundaries between sporadic and monogenic SVD have been blurred by the finding that typical mutations causing monogenic SVD seem to be much more common in the general population than expected from the prevalence of clinical monogenic SVD.<sup>14</sup> For example, while the reported prevalence of CADASIL is about 4 in 10 000 in the United Kingdom, typical cysteine-changing *NOTCH3* mutations are seen in 1 in 800 individuals in a large population cohort (UK Biobank).<sup>93</sup> A similar situation was found for *HTRA1* and *COL4A1/2* mutations.<sup>93</sup> The clinical significance of these mutations in the general population remains to be determined but their presence is associated with an increased risk of stroke and VCID.<sup>93</sup> Why some mutations result in typical monogenic disease and others are much less penetrant is uncertain, although cardiovascular risk factors and mutation position influence their phenotype,<sup>93</sup> and modifier genes have been hypothesized.

## PRECLINICAL MODELS IN SVD AND VCID

Experimental animal models relevant to SVD and VCID have been reviewed by ourselves and others.<sup>94–96</sup> Spontaneous lesions occur in some rodent models, for example, spontaneously hypertensive stroke-prone rats develop focal infarcts and hemorrhages.<sup>97</sup> Spontaneously hypertensive stroke-prone rats do not display the vessel pathology of SVD<sup>44,98</sup> and chronic hypertension alone appears insufficient to generate SVD-like arterial changes in rats or monkeys.<sup>44,98</sup> Molecular pathways link hypertension, endothelial dysfunction, and oligodendrocyte damage in spontaneously hypertensive stroke-prone rats.<sup>99</sup>

In our view, rodent models offer a platform to assess some specific aspects of SVD pathophysiology (such as blood vessel fibrosis, perivascular trafficking, white matter degeneration) but do not provide a unified model

of the whole disease process occurring in humans.<sup>94,95</sup> Larger species (primates, canines, ovines, swine) have the advantages of a large gyrencephalic brain and cerebral blood vessels that more resemble their human counterparts.<sup>44,94</sup>

## HYPOTHESES OF SVD PATHOGENESIS

The mechanism by which SVD vascular pathology leads to parenchymal changes remains incompletely defined. Mechanisms may be heterogeneous and dependent on the risk factor profile (severity of hypertension, diabetes), the type of SVD, and its anatomic location.<sup>3</sup> Various pathogenic pathways have been proposed.

First, an early, simple hypothesis was that, by analogy with large vessel ischemic stroke, small artery embolic occlusion produced a correspondingly smaller, lacunar lesion.<sup>100</sup> This was not supported by the serial sectioning of brain tissue performed by Fisher<sup>5</sup> who found few emboli, or by transcranial Doppler imaging in lacunar patients with stroke where embolic events were rare.<sup>101</sup> As small arteries exhibiting SVD have abundant endothelial thrombomodulin, the potent physiological antithrombotic protein, local thrombosis leading to occlusion appears unlikely.<sup>61</sup>

In a second hypothesis, local BBB dysfunction causes SVD vessel pathology, as well as parenchymal changes.<sup>36,102</sup> The rationale is that multiple reactive, harmful plasma components are allowed access to the CNS, triggering cell damage in the artery wall and diffuse myelin and axonal damage in the white matter. Plasma extravasation also represents an excess water load, with risk of vasogenic edema. In support of this view, the WMH attributed to SVD resembles fluid diffusion patterns. MRI data show enhanced brain accumulation of intravascular contrast agents in people with SVD, relative to controls,<sup>65</sup> with accumulation especially evident within WMH.<sup>65,67,68</sup> By contrast, neuropathology studies have not supported this hypothesis, with extravascular plasma markers showing little relation to SVD.<sup>62–64</sup> The relation of histological markers of BBB dysfunction to AD pathology is more robust.<sup>103</sup>

In a third hypothesis, chronic underperfusion (oligemia) links small artery fibrosis to diffuse white matter damage and ultimately a focal lacunar lesion. In support of this view, regulation of cerebral blood flow—rapidly and precisely autoregulated in healthy brain tissue—is disrupted in lacunar stroke.<sup>104,105</sup> This accords with neuropathological findings that histological markers of cell ischemia are expressed within WMH.<sup>60</sup> Insufficient arteriolar dilatation, leading to repeated episodes of underperfusion, might be expected to cause cumulative damage in brain tissue, with lesional features including disruption of myelin structure, some axonal loss, patchy BBB dysfunction, congregation of microglia and macrophages (to remove debris), and heightened astrocyte activity (to clear edema fluid). These features resemble those of an incomplete



lacune.<sup>106</sup> As oligemia, edema, and BBB dysfunction are all interdependent, separating this from the previous hypothesis is challenging, especially in a chronic, nonfatal disease.<sup>59</sup>

Fourth, a further suggested pathogenic process is inflammation, both systemic and within the CNS.<sup>4</sup> Inflammatory cells are found in the white matter of some post-mortem brains from patients with SVD.<sup>60,64,107</sup> Evidence for CNS inflammation is also supported by positron emission tomography imaging of patients with SVD, using radioligands such as 11C-PK11195 targeted against the translocator protein, a mitochondrial surface protein upregulated in microglial activation. Both increased global 11C-PK11195 binding<sup>108</sup> and focal hot spots of increased binding, have been reported in SVD.<sup>109</sup> Systemic blood markers of inflammation have also been reported to be elevated in SVD and to correlate with radiological disease severity, although whether such changes are casual or secondary to tissue damage is uncertain.<sup>110,111</sup>

### Possible Molecular Mechanisms

In terms of molecular mechanisms, preclinical data from various laboratories have suggested possible hypotheses as to how hypertension influences neurovascular function and VCID.<sup>112</sup> Invoking neuroinflammation, endothelial dysfunction, and fibrosis, these mechanisms include aberrant activity of the renin-angiotensin system, loss of BBB components, or defective NO, cytokine, or endothelin signaling. Examples of particular interest include IL-6 (interleukin-6),<sup>113</sup> ET-1 (endothelin-1) (via ET<sub>A</sub> receptors),<sup>114</sup> and perivascular collagen production.<sup>44,115</sup> The dramatis personae of the neurovascular unit, including pericytes, myofibroblasts, and perivascular macrophages<sup>116</sup> are all likely participants.<sup>117</sup>

## SUMMARY AND FUTURE DIRECTIONS IN SVD AND VCID

This is an exciting time in SVD research. The dementia field in general has been energized by recent progress in antibody therapy for AD, which will have spin-off benefits for VCID research.<sup>118</sup> Early-phase clinical trials in SVD are also emerging.<sup>79,85,86</sup> Though neutral, these offer possible directions for further trials to deliver therapeutic interventions in SVD and hence in VCID.<sup>80</sup> We anticipate more, carefully designed clinical trials in SVD, utilizing recently developed guidelines.<sup>87–89</sup>

It is a truism that since the era of C. Miller Fisher this field has lacked molecular targets. Modern biology and big data streams are changing that. Genome-wide association study data have provided an impressive catalog of candidate genes linked to sporadic SVD.<sup>14</sup> All will require conscientious laboratory studies to evaluate their

significance in disease. At the level of gene expression, there is a burgeoning collection of cell atlases derived from brain tissue samples.<sup>117</sup> These reveal disease-related changes in the RNA profile of each cell type, including vascular cells, within a brain biospecimen.<sup>117,119,120</sup> Coupled with advances in single-cell proteomics, these atlases are informing on cell subtypes (eg, subfamilies of oligodendroglia, microglia, and endothelial cells) and cell-cell interactions relevant to brain disease. For SVD, they will reveal novel molecular agents as possible biomarkers and drug targets.<sup>79,80</sup> Aided by novel chemistry and better translational platforms, all accelerated by the power of artificial intelligence, these are likely to provide real progress in how we understand and treat SVD and VCID.

## ARTICLE INFORMATION

### Affiliations

Molecular and Clinical Sciences Research Institute, St George's University of London, United Kingdom (A.H.H.). Department of Neurology, St George's University Hospitals NHS Foundation Trust, London, United Kingdom (A.H.H.). Stroke Research Group, Department of Clinical Neurosciences, University of Cambridge, United Kingdom (H.S.M.). Rush Alzheimer's Disease Center, Departments of Pathology and Neurological Sciences, Rush University Medical Center, Chicago, IL (J.A.S.).

### Acknowledgments

The authors thank Fatemeh Geranmayeh, Gustavo Roman, and Colin Smith for comments on the article. A.H. Hainsworth thanks Leslie Bridges, Margaret Esiri, and Alistair Lammie for many helpful discussions. The views expressed in this article are those of the individual authors.

### Sources of Funding

Research in A.H. Hainsworth's group is funded by the UK Medical Research Council (MR/R005567/1 and MR/T033371/1), British Heart Foundation (PG/20/10397 and SP/F/22/150042), and UK Alzheimer's Society and Alzheimer's Drug Discovery Foundation (20140901). H.S. Markus is supported by a British Heart Foundation program grant (RG/F/22/110052). Infrastructural support was provided by the Cambridge British Heart Foundation Centre of Research Excellence (RE/18/1/34212) and Cambridge University Hospitals National Institute for Health and Care Research (NIHR) Biomedical Research center (BRC-1215-20014). J.A. Schneider has received funding from US National Institutes of Health (R01AG017917, R01AG064233, R01AG061028, P30AG072975, and P30AG010161).

### Disclosures

A.H. Hainsworth has received honoraria from Eli-Lilly and from National Institute on Aging (NIA). He serves as a consultant for AriBio Co, Ltd. and chairs the DementiasPlatform UK Vascular Experimental Medicine group. J.A. Schneider has received honoraria from Eli Lilly, Alnylam Pharmaceuticals, Inc, Apellis Pharmaceuticals, Inc, and Fondation Alzheimer. She has served as an expert witness for the US National Hockey League. The other author reports no conflicts.

## REFERENCES

1. Savva GM, Wharton SB, Ince PG, Forster G, Matthews FE, Brayne C; Medical Research Council Cognitive Function and Ageing Study. Age, neuropathology, and dementia. *N Engl J Med*. 2009;360:2302–2309. doi: 10.1056/NEJMoa0806142
2. MRC-CFAS. Pathological correlates of late-onset dementia in a multicentre, community-based population in England and Wales. Neuropathology group of the Medical Research Council Cognitive Function and Ageing Study (MRC CFAS). *Lancet*. 2001;357:169–175. doi: 10.1016/s0140-6736(00)03589-3
3. Oveisgharan S, Kim N, Agrawal S, Yu L, Leurgans S, Kapasi A, Arfanakis K, Bennett DA, Schneider JA, Buchman AS. Brain and spinal cord arteriosclerosis and its associations with cerebrovascular disease risk factors in

- community-dwelling older adults. *Acta Neuropathol.* 2023;145:219–233. doi: 10.1007/s00401-022-02527-z
4. Gouw AA, Seewann A, van der Flier WM, Barkhof F, Rozemuller AM, Scheltens P, Geurts JGG. Heterogeneity of small vessel disease: a systematic review of MRI and histopathology correlations. *J Neurol Neurosurg Psychiatry.* 2011;82:126–135. doi: 10.1136/jnnp.2009.204685
  5. Fisher CM. The arterial lesions underlying lacunes. *Acta Neuropathol.* 1968;12:1–15. doi: 10.1007/BF00685305
  6. Lammie GA. Hypertensive cerebral small vessel disease and stroke. *Brain Pathol.* 2002;12:358–370. doi: 10.1111/j.1750-3639.2002.tb00450.x
  7. Lammie GA. Pathology of small vessel stroke. *Br Med Bull.* 2000;56:296–306. doi: 10.1258/0007142001903229333
  8. Cannistraro RJ, Badi M, Eidelman BH, Dickson DW, Middlebrooks EH, Meschia JF. CNS small vessel disease: a clinical review. *Neurology.* 2019;92:1146–1156. doi: 10.1212/WNL.00000000000007654
  9. Esiri MM, Wilcock GK, Morris JH. Neuropathological assessment of the lesions of significance in vascular dementia. *J Neurol Neurosurg Psychiatry.* 1997;63:749–753. doi: 10.1136/jnnp.63.6.749
  10. Ighodaro ET, Abner EL, Fardo DW, Lin AL, Katsumata Y, Schmitt FA, Kryscio RJ, Jicha GA, Neltner JH, Monsell SE, et al; Alzheimer's Disease Neuroimaging Initiative (ADNI). Risk factors and global cognitive status related to brain arteriolosclerosis in elderly individuals. *J Cereb Blood Flow Metab.* 2017;37:201–216. doi: 10.1177/0271678X15621574
  11. Lamar M, Leurgans S, Kapasi A, Barnes LL, Boyle PA, Bennett DA, Arfanakis K, Schneider JA. Complex profiles of cerebrovascular disease pathologies in the aging brain and their relationship with cognitive decline. *Stroke.* 2022;53:218–227. doi: 10.1161/STROKEAHA.121.034814
  12. Rosenberg GA, Wallin A, Wardlaw JM, Markus HS, Montaner J, Wolfson L, ladecola C, Zlokovic BV, Joutel A, Dichgans M, et al. Consensus statement for diagnosis of subcortical small vessel disease. *J Cereb Blood Flow Metab.* 2015;36:6–25. doi: 10.1038/jcbfm.2015.172
  13. Traylor M, Persyn E, Tomppo L, Klasson S, Abedi V, Bakker MK, Torres N, Li L, Bell S, Rutten-Jacobs L, et al; Helsinki Stroke, Study Dutch Paresnoer Institute-Cerebrovascular Accident (CVA) Study Group. Genetic basis of lacunar stroke: a pooled analysis of individual patient data and genome-wide association studies. *Lancet Neurol.* 2021;20:351–361. doi: 10.1016/S1474-4422(21)00031-4
  14. Bordes C, Sargurupremraj M, Mishra A, Debette S. Genetics of common cerebral small vessel disease. *Nat Rev Neurol.* 2022;18:84–101. doi: 10.1038/s41582-021-00592-8
  15. Persyn E, Hanscombe KB, Howson JMM, Lewis CM, Traylor M, Markus HS. Genome-wide association study of MRI markers of cerebral small vessel disease in 42,310 participants. *Nat Commun.* 2020;11:2175. doi: 10.1038/s41467-020-15932-3
  16. Pantoni L. Cerebral small vessel disease: from pathogenesis and clinical characteristics to therapeutic challenges. *Lancet Neurol.* 2010;9:689–701. doi: 10.1016/S1474-4422(10)70104-6
  17. van Velu SJ, Arfanakis K, Schneider JA. Neuropathology of vascular brain health: insights from ex vivo magnetic resonance imaging-histopathology studies in cerebral small vessel disease. *Stroke.* 2022;53:404–415. doi: 10.1161/STROKEAHA.121.032608
  18. Humphreys CA, Smith C, Wardlaw JM. Correlations in post-mortem imaging-histopathology studies of sporadic human cerebral small vessel disease: a systematic review. *Neuropathol Appl Neurobiol.* 2021;47:910–930. doi: 10.1111/nan.12737
  19. Arvanitakis Z, Capuano AW, Leurgans SE, Bennett DA, Schneider JA. Relation of cerebral vessel disease to Alzheimer's disease dementia and cognitive function in elderly people: a cross-sectional study. *Lancet Neurol.* 2016;15:934–943. doi: 10.1016/s1474-4422(16)30029-1
  20. Arvanitakis Z, Leurgans SE, Barnes LL, Bennett DA, Schneider JA. Microinfarct pathology, dementia, and cognitive systems. *Stroke.* 2011;42:722–727. doi: 10.1161/STROKEAHA.110.595082
  21. Masuda J, Tanaka K, Omae T, Ueda K, Sadoshima S. Cerebrovascular diseases and their underlying vascular lesions in Hisayama, Japan: a pathological study of autopsy cases. *Stroke.* 1983;14:934–940. doi: 10.1161/01.str.14.6.934
  22. Honda H, Sasaki K, Hamasaki H, Shijo M, Koyama S, Ohara T, Ninomiya T, Kiyohara Y, Suzuki SO, Iwaki T. Trends in autopsy-verified dementia prevalence over 29 years of the Hisayama study. *Neuropathology.* 2016;36:383–387. doi: 10.1111/neup.12298
  23. Suemoto CK, Leite REP, Ferretti-Rebustini REL, Rodriguez RD, Nitri R, Pasqualucci CA, Jacob-Filho W, Grinberg LT. Neuropathological lesions in the very old: results from a large Brazilian autopsy study. *Brain Pathol.* 2019;29:771–781. doi: 10.1111/bpa.12719
  24. Brenowitz WD, Keene CD, Hawes SE, Hubbard RA, Longstreth WT Jr, Woltjer RL, Crane PK, Larson EB, Kukull WA. Alzheimer's disease neuropathologic change, Lewy body disease, and vascular brain injury in clinic- and community-based samples. *Neurobiol Aging.* 2017;53:83–92. doi: 10.1016/j.neurobiolaging.2017.01.017
  25. Sonnen JA, Larson EB, Crane PK, Haneuse S, Li G, Schellenberg GD, Craft S, Leverenz JB, Montine TJ. Pathological correlates of dementia in a longitudinal, population-based sample of aging. *Ann Neurol.* 2007;62:406–413. doi: 10.1002/ana.21208
  26. Launer LJ, Petrovitch H, Ross GW, Markesbery W, White LR. AD brain pathology: vascular origins? Results from the HAAS autopsy study. *Neurobiol Aging.* 2008;29:1587–1590. doi: 10.1016/j.neurobiolaging.2007.03.008
  27. White LR, Edland SD, Hemmy LS, Montine KS, Zarow C, Sonnen JA, Uyehara-Lock JH, Gelber RP, Ross GW, Petrovitch H, et al. Neuropathologic comorbidity and cognitive impairment in the Nun and Honolulu-Asia aging studies. *Neurology.* 2016;86:1000–1008. doi: 10.1212/WNL.0000000000002480
  28. Matthews FE, Brayne C, Lowe J, McKeith I, Wharton SB, Ince P. Epidemiological pathology of dementia: attributable-risks at death in the medical research council cognitive function and ageing study. *PLoS Med.* 2009;6:e1000180. doi: 10.1371/journal.pmed.1000180
  29. Kapasi A, DeCarli C, Schneider JA. Impact of multiple pathologies on the threshold for clinically overt dementia. *Acta Neuropathol.* 2017;134:171–186. doi: 10.1007/s00401-017-1717-7
  30. Arvanitakis Z, Capuano AW, Lamar M, Shah RC, Barnes LL, Bennett DA, Schneider JA. Late-life blood pressure association with cerebrovascular and Alzheimer disease pathology. *Neurology.* 2018;91:e517–e525. doi: 10.1212/WNL.00000000000005951
  31. Barnes LL, Lamar M, Schneider JA. Sex differences in mixed neuropathologies in community-dwelling older adults. *Brain Res.* 2019;1719:11–16. doi: 10.1016/j.brainres.2019.05.028
  32. Barnes LL, Leurgans S, Aggarwal NT, Shah RC, Arvanitakis Z, James BD, Buchman AS, Bennett DA, Schneider JA. Mixed pathology is more likely in Black than White decedents with Alzheimer dementia. *Neurology.* 2015;85:528–534. doi: 10.1212/WNL.0000000000001834
  33. Kapasi A, Leurgans SE, Arvanitakis Z, Barnes LL, Bennett DA, Schneider JA. Abeta (amyloid beta) and tau tangle pathology modifies the association between small vessel disease and cortical microinfarcts. *Stroke.* 2021;52:1012–1021. doi: 10.1161/STROKEAHA.120.031073
  34. Levine DA, Springer MV, Brodtmann A. Blood pressure and vascular cognitive impairment. *Stroke.* 2022;53:1104–1113. doi: 10.1161/STROKEAHA.121.036140
  35. Palta P, Albert MS, Gottesman RF. Heart health meets cognitive health: evidence on the role of blood pressure. *Lancet Neurol.* 2021;20:854–867. doi: 10.1016/S1474-4422(21)00248-9
  36. Lammie GA, Brannan F, Slattery J, Warlow C. Nonhypertensive cerebral small-vessel disease an autopsy study. *Stroke.* 1997;28:2222–2229. doi: 10.1161/01.str.28.11.2222
  37. Huang J, Biessels GJ, de Leeuw FE, li Y, Skoog I, Mok V, Chen C, Hilal S. Cerebral microinfarcts revisited: detection, causes, and clinical relevance. *Int J Stroke.* 2023. doi: 10.1177/17474930231187979
  38. Power MC, Mormino E, Soldan A, James BD, Yu L, Armstrong NM, Bangen KJ, Delano-Wood L, Lamar M, Lim YY, et al. Combined neuropathological pathways account for age-related risk of dementia. *Ann Neurol.* 2018;84:10–22. doi: 10.1002/ana.25246
  39. Vemuri P, Lesnick TG, Przybelski SA, Knopman DS, Preboske GM, Kantarci K, Raman MR, Machulda MM, Mielke MM, Lowe VJ, et al. Vascular and amyloid pathologies are independent predictors of cognitive decline in normal elderly. *Brain.* 2015;138:761–771. doi: 10.1093/brain/awu393
  40. Boyle PA, Yu L, Wilson RS, Leurgans SE, Schneider JA, Bennett DA. Person-specific contribution of neuropathologies to cognitive loss in old age. *Ann Neurol.* 2018;83:74–83. doi: 10.1002/ana.25123
  41. Baker AB, Iannone A. Cerebrovascular disease. II. The smaller intracerebral arteries. *Neurology.* 1959;9:391–396. doi: 10.1212/wnl.9.6.391
  42. Furuta A, Ishii N, Nishihara Y, Horie A. Medullary arteries in aging and dementia. *Stroke.* 1991;22:442–446. doi: 10.1161/01.str.22.4.442
  43. Dozono K, Ishii N, Nishihara Y, Horie A. An autopsy study of the incidence of lacunes in relation to age, hypertension, and arteriosclerosis. *Stroke.* 1991;22:993–996. doi: 10.1161/01.str.22.8.993
  44. Kumar AA, Yeo N, Whittaker M, Attra P, Barrick TR, Bridges LR, Dickson DW, Esiri MM, Farris CW, Graham D, et al. Vascular collagen type-IV in hypertension and cerebral small vessel disease. *Stroke.* 2022;53:3696–3705. doi: 10.1161/STROKEAHA.122.037761
  45. Fisher CM. Lacunes: small, deep cerebral infarcts. *Neurology.* 1965;15:774–784. doi: 10.1212/wnl.15.8.774

46. Fisher CM. Lacunar strokes and infarcts: a review. *Neurology*. 1982;32:871–876. doi: 10.1212/wnl.32.8.871
47. Fisher CM. Cerebral miliary aneurysms in hypertension. *Am J Pathol*. 1972;66:313–330.
48. Boiten J, Lodder J, Kessels F. Two clinically distinct lacunar infarct entities? A hypothesis. *Stroke*. 1993;24:652–656. doi: 10.1161/01.str.24.5.652
49. Baker AB. Structure of the small cerebral arteries in hypertension. *Am J Pathol*. 1941;17:39–46.1.
50. Arfanakis K, Evia AM, Leurgans SE, Cardoso LFC, Kulkarni A, Alqam N, Lopes LF, Vieira D, Bennett DA, Schneider JA. Neuropathologic correlates of white matter hyperintensities in a community-based cohort of older adults. *J Alzheimers Dis*. 2020;73:333–345. doi: 10.3233/JAD-190687
51. Feigin I, Popoff N. Neuropathological changes late in cerebral edema: the relationship to trauma, hypertensive disease and Binswanger's encephalopathy. *J Neuropathol Exp Neurol*. 1963;22:500–511. doi: 10.1097/00005072-196307000-00011
52. Gutierrez J, Khasiyev F, Liu M, DeRosa JT, Tom SE, Rundek T, Cheung K, Wright CB, Sacco RL, Elkind MSV. Determinants and outcomes of asymptomatic intracranial atherosclerotic stenosis. *J Am Coll Cardiol*. 2021;78:562–571. doi: 10.1016/j.jacc.2021.05.041
53. Caplan LR, Gorelick PB, Hier DB. Race, sex and occlusive cerebrovascular disease: a review. *Stroke*. 1986;17:648–655. doi: 10.1161/01.str.17.4.648
54. Barnes LL, Shah RC, Aggarwal NT, Bennett DA, Schneider JA. The minority aging research study: ongoing efforts to obtain brain donation in African Americans without dementia. *Curr Alzheimer Res*. 2012;9:734–745. doi: 10.2174/156720512801322627
55. Hainsworth AH, Oommen AT, Bridges LR. Endothelial cells and human cerebral small vessel disease. *Brain Pathol*. 2015;25:44–50. doi: 10.1111/bpa.12224
56. Norton EJ, Bridges LR, Kenyon LC, Esiri MM, Bennett DC, Hainsworth AH. Cell senescence and cerebral small vessel disease in the brains of people aged 80 years and older. *J Neuropathol Exp Neurol*. 2019;78:1066–1072. doi: 10.1093/jnen/nlz088
57. Tanoi Y, Okeda R, Budka H. Binswanger's encephalopathy: serial sections and morphometry of the cerebral arteries. *Acta Neuropathol*. 2000;100:347–355. doi: 10.1007/s004010000203
58. Miao Q, Paloneva T, Tuisku S, Roine S, Poyhonen M, Viitanen M, Kalimo H. Arterioles of the lenticular nucleus in CADASIL. *Stroke*. 2006;37:2242–2247. doi: 10.1161/01.STR.0000236838.84150.c2
59. Hainsworth AH. White matter lesions in cerebral small vessel disease: underperfusion or leaky vessels? *Neurology*. 2019;92:687–688. doi: 10.1212/WNL.00000000000007258
60. Fernando MS, Simpson JE, Matthews F, Brayne C, Lewis CE, Barber R, Kalaria RN, Forster G, Esteves F, Wharton SB, et al; MRC Cognitive Function and Ageing Neuropathology Study Group. White matter lesions in an unselected cohort of the elderly: molecular pathology suggests origin from chronic hypoperfusion injury. *Stroke*. 2006;37:1391–1398. doi: 10.1161/01.STR.0000221308.94473.14
61. Giwa MO, Williams J, Elderfield K, Jiwa NS, Bridges LR, Kalaria RN, Markus HS, Esiri MM, Hainsworth AH. Neuropathologic evidence of endothelial changes in cerebral small vessel disease. *Neurology*. 2012;78:167–174. doi: 10.1212/WNL.0b013e3182407968
62. Young VG, Halliday GM, Kril JJ. Neuropathologic correlates of white matter hyperintensities. *Neurology*. 2008;71:804–811. doi: 10.1212/01.wnl.0000319691.50117.54
63. Bridges LR, Andoh J, Lawrence AJ, Khoong CHL, Poon WW, Esiri MM, Markus HS, Hainsworth AH. Blood-brain barrier dysfunction and cerebral small vessel disease (arteriolosclerosis) in brains of older people. *J Neuropathol Exp Neurol*. 2014;73:1026–1033. doi: 10.1097/NEN.0000000000000124
64. Hainsworth AH, Minett T, Andoh J, Forster G, Bhide I, Barrick TR, Elderfield K, Jeevahan J, Markus HS, Bridges LR. Neuropathology of white matter lesions, blood-brain barrier dysfunction, and dementia. *Stroke*. 2017;48:2799–2804. doi: 10.1161/STROKEAHA.117.018101
65. Topakian R, Barrick TR, Howe FA, Markus HS. Blood-brain barrier permeability is increased in normal-appearing white matter in patients with lacunar stroke and leucoaraiosis. *J Neurol Neurosurg Psychiatry*. 2010;81:192–197. doi: 10.1136/jnnp.2009.172072
66. Wardlaw JM, Smith C, Dichgans M. Small vessel disease: mechanisms and clinical implications. *Lancet Neurol*. 2019;18:684–696. doi: 10.1016/S1474-4422(19)30079-1
67. Taheri S, Gasparovic C, Huisa BN, Adair JC, Edmonds E, Prestopnik J, Grossetete M, Shah NJ, Wills J, Qualls C, et al. Blood-brain barrier permeability abnormalities in vascular cognitive impairment. *Stroke*. 2011;42:2158–2163. doi: 10.1161/STROKEAHA.110.611731
68. Wong S, Jacobus JFA, Zhang E, Hoff E, Staals J, van Oostenbrugge R, Backes WH. Blood-brain barrier impairment and hypoperfusion are linked in cerebral small vessel disease. *Neurology*. 2019;92:e1669. doi: 10.1212/WNL.00000000000007263
69. Alakbarzade V, French JM, Howlett DR, Attems J, Francis PT, Stratton S, Clark CN, Pereira AC, Hainsworth AH. Cerebral amyloid angiopathy distribution in older people: a cautionary note. *Alzheimers Dement (NY)*. 2021;7:e12145. doi: 10.1002/trc2.12145
70. Fazekas F, Kleinert R, Offenbacher H, Schmidt R, Kleinert G, Payer F, Radner H, Lechner H. Pathologic correlates of incidental MRI white matter signal hyperintensities. *Neurology*. 1993;43:1683–1689. doi: 10.1212/wnl.43.9.1683
71. Smallwood A, Oulhaj A, Joachim C, Christie S, Sloan C, Smith AD, Esiri M. Cerebral subcortical small vessel disease and its relation to cognition in elderly subjects: a pathological study in the Oxford Project to Investigate Memory and Ageing (OPTIMA) cohort. *Neuropathol Appl Neurobiol*. 2012;38:337–343. doi: 10.1111/j.1365-2990.2011.01221.x
72. Anad A, Barker MK, Katanga JA, Arfanakis K, Bridges LR, Esiri MM, Isaacs JD, Prpar Mihevc S, Pereira AC, Schneider JA, et al. Vasculocentric axonal NfH in small vessel disease. *J Neuropathol Exp Neurol*. 2022;81:182–192. doi: 10.1093/jnen/nlab134
73. Duering M, Biessels GJ, Brodtmann A, Chen C, Cordonnier C, de Leeuw FE, Debette S, Frayne R, Jouvent E, Rost NS, et al. Neuroimaging standards for research into small vessel disease: advances since 2013. *Lancet Neurol*. 2023;22:602–618. doi: 10.1016/S1474-4422(23)00131-X
74. Wilson D, Charidimou A, Ambler G, Fox ZV, Gregoire S, Rayson P, Imaizumi T, Fluri F, Naka H, Horstmann S, et al. Recurrent stroke risk and cerebral microbleed burden in ischemic stroke and TIA: a meta-analysis. *Neurology*. 2016;87:1501–1510. doi: 10.1212/WNL.00000000000003183
75. Ohlmeier L, Nannoni S, Pallucca C, Brown RB, Loubiere L, Markus HS; DNA Lacunar 2 Investigators. Prevalence of, and risk factors for, cognitive impairment in lacunar stroke. *Int J Stroke*. 2023;18:62–69. doi: 10.1177/17474930211064965
76. Peters R, Xu Y, Fitzgerald O, Aung HL, Beckett N, Bulpitt C, Chalmers J, Forette F, Gong J, Harris K, et al; Dementia Risk Reduction (DIRECT) Collaboration. Blood pressure lowering and prevention of dementia: an individual patient data meta-analysis. *Eur Heart J*. 2022;43:4980–4990. doi: 10.1093/eurheartj/ehac584
77. Elahi FM, Alladi S, Black SE, Claassen J, DeCarli C, Hughes TM, Moonen J, Pajewski NM, Price BR, Satizabal C, et al. Clinical trials in vascular cognitive impairment following SPRINT-MIND: an international perspective. *Cell Rep Med*. 2023;4:101089. doi: 10.1016/j.xcrm.2023.101089
78. Nasrallah IM, Pajewski NM, Auchus AP, Chelune G, Cheung AK, Cleveland ML, Coker LH, Crowe MG, Cushman WC, Cutler JA, et al; SPRINT MIND Investigators for the SPRINT Research Group. Association of intensive vs standard blood pressure control with cerebral white matter lesions. *JAMA*. 2019;322:524–534. doi: 10.1001/jama.2019.10551
79. Smith EE, Markus HS. New treatment approaches to modify the course of cerebral small vessel diseases. *Stroke*. 2019;51:38–46. doi: 10.1161/strokeaha.119.024150
80. Hainsworth AH, Elahi FM, Corriveau RA. An introduction to therapeutic approaches to vascular cognitive impairment. *Cereb Circ Cogn Behav*. 2021;2:100033. doi: 10.1016/j.cccb.2021.100033
81. Williamson JD, Pajewski NM, Auchus AP, Bryan RN, Chelune G, Cheung AK, Cleveland ML, Coker LH, Crowe MG, Cushman WC, et al; SPRINT MIND Investigators for the SPRINT Research Group. Effect of intensive vs standard blood pressure control on probable dementia: a randomized clinical trial. *JAMA*. 2019;321:553–561. doi: 10.1001/jama.2018.21442
82. Croall ID, Tozer DJ, Moyinhan B, Khan U, O'Brien JT, Morris RG, Cambridge VC, Barrick TR, Blamire AM, Ford GA, et al; PRESERVE Study Team. Effect of standard vs intensive blood pressure control on cerebral blood flow in small vessel disease: the PRESERVE randomized clinical trial. *JAMA Neurol*. 2018;75:720–727. doi: 10.1001/jamaneurol.2017.5153
83. Abell JG, Kivimaki M, Dugravot A, Tabak AG, Fayosse A, Shipley M, Sabia S, Singh-Manoux A. Association between systolic blood pressure and dementia in the Whitehall II cohort study: role of age, duration, and threshold used to define hypertension. *Eur Heart J*. 2018;39:3119–3125. doi: 10.1093/eurheartj/ehy288
84. Benavente OR, Hart RG, McClure LA, Szychowski JM, Coffey CS, Pearce LA; SPS3 Investigators. Effects of clopidogrel added to aspirin in patients with recent lacunar stroke. *N Engl J Med*. 2012;367:817–825. doi: 10.1056/NEJMoa1204133

85. Pauls MMH, Binnie LR, Benjamin P, Betteridge S, Clarke B, Dhillon MK, Ghatala R, Hainsworth FAH, Howe FA, Khan U, et al. The PASTIS trial: testing tadafafil for possible use in vascular cognitive impairment. *Alzheimers Dement*. 2022;18:2393–2402. doi: 10.1002/alz.12559
86. Wardlaw JM, Woodhouse LJ, Mhlanga II, Oatey K, Heye AK, Bamford J, Cvoro V, Doubal FN, England T, Hassan A, et al. Isosorbide mononitrate and cilostazol treatment in patients with symptomatic cerebral small vessel disease: the lacunar intervention trial-2 (LACI-2) randomized clinical trial. *JAMA Neurol*. 2023;80:682–692. doi: 10.1001/jamaneurol.2023.1526
87. Sachdev PS, Lipnicki DM, Crawford JD, Brodaty H. The vascular behavioral and cognitive disorders criteria for vascular cognitive disorders: a validation study. *Eur J Neurol*. 2019;26:1161–1167. doi: 10.1111/ene.13960
88. Skrobot OA, Black SE, Chen C, DeCarli C, Erkinjuntti T, Ford GA, Kalaria RN, O'Brien J, Pantoni L, Pasquier F, et al; VICCCS Group. Progress toward standardized diagnosis of vascular cognitive impairment: guidelines from the vascular impairment of cognition classification consensus study. *Alzheimers Dement*. 2018;14:280–292. doi: 10.1016/j.jalz.2017.09.007
89. Markus HS, van Der Flier WM, Smith EE, Bath P, Biessels GJ, Briceno E, Brodtman A, Chabriat H, Chen C, de Leeuw FE, et al. Framework for clinical trials in cerebral small vessel disease (FINESSE): a review. *JAMA Neurol*. 2022;79:1187–1198. doi: 10.1001/jamaneurol.2022.2262
90. Debette S, Markus HS. Stroke genetics: discovery, insight into mechanisms, and clinical perspectives. *Circ Res*. 2022;130:1095–1111. doi: 10.1161/CIRCRESAHA.122.319950
91. Mancuso M, Arnold M, Bersano A, Burlina A, Chabriat H, Debette S, Enzinger C, Federico A, Filla A, Finsterer J, et al. Monogenic cerebral small-vessel diseases: diagnosis and therapy consensus recommendations of the European academy of neurology. *Eur J Neurol*. 2020;27:909–927. doi: 10.1111/ene.14183
92. Joutel A, Haddad I, Ratelade J, Nelson MT. Perturbations of the cerebrovascular matrisome: a convergent mechanism in small vessel disease of the brain? *J Cereb Blood Flow Metab*. 2016;36:143–157. doi: 10.1038/jcbfm.2015.62
93. Cho BPH, Harshfield EL, Al-Thani M, Tozer DJ, Bell S, Markus HS. Association of vascular risk factors and genetic factors with penetrance of variants causing monogenic stroke. *JAMA Neurol*. 2022;79:1303–1311. doi: 10.1001/jamaneurol.2022.3832
94. Hainsworth AH, Allan SM, Boltze J, Cunningham C, Farris C, Head E, Ihara M, Isaacs JD, Kalaria RN, Lesnik Oberstein SAMJ, et al. Translational models for vascular cognitive impairment: a review including larger species. *BMC Med*. 2017;15:16. doi: 10.1186/s12916-017-0793-9
95. Hainsworth AH, Markus HS. Do in vivo experimental models reflect human cerebral small vessel disease? A systematic review. *J Cereb Blood Flow Metab*. 2008;28:1877–1891. doi: 10.1038/jcbfm.2008.91
96. Bailey EL, McCulloch J, Sudlow C, Wardlaw JM. Potential animal models of lacunar stroke: a systematic review. *Stroke*. 2009;40:e451–e458. doi: 10.1161/STROKEAHA.108.528430
97. Bailey EL, Smith C, Sudlow CL, Wardlaw JM. Is the spontaneously hypertensive stroke prone rat a pertinent model of sub cortical ischemic stroke? A systematic review. *Int. J. Stroke*. 2011;6:434–444. doi: 10.1111/j.1747-4949.2011.00659.x
98. Brittain JF, McCabe C, Khatun H, Kaushal N, Bridges LR, Holmes WM, Barrick TR, Graham D, Dominiczak AF, Mhairi Macrae I, et al. An MRI-histological study of white matter in stroke-free SHRSP. *J Cereb Blood Flow Metab*. 2013;33:760–763. doi: 10.1038/jcbfm.2013.14
99. Rajani RM, Quick S, Ruigrok SR, Graham D, Harris SE, Verhaaren BFJ, Forname M, Seshadri S, Atanur SS, Dominiczak AF, et al. Reversal of endothelial dysfunction reduces white matter vulnerability in cerebral small vessel disease in rats. *Sci Transl Med*. 2018;10:eaam9507. doi: 10.1126/scitranslmed.aam9507
100. Ay H, Oliveira-Filho J, Buonanno FS, Ezzeddine M, Schaefer PW, Rordorf G, Schwamm LH, Gonzalez RG, Koroshetz WJ. Diffusion-weighted imaging identifies a subset of lacunar infarction associated with embolic source. *Stroke*. 1999;30:2644–2650. doi: 10.1161/01.str.30.12.2644
101. Kaposzta Z, Young E, Bath PM, Markus HS. Clinical application of asymptomatic embolic signal detection in acute stroke: a prospective study. *Stroke*. 1999;30:1814–1818. doi: 10.1161/01.str.30.9.1814
102. Wardlaw JM, Sandercock PA, Dennis MS, Starr J. Is breakdown of the blood-brain barrier responsible for lacunar stroke, leukoariosis, and dementia? *Stroke*. 2003;34:806–812. doi: 10.1161/01.STR.0000058480.77236.B3
103. Sengillo JD, Winkler EA, Walker CT, Sullivan JS, Johnson M, Zlokovic BV. Deficiency in mural vascular cells coincides with blood-brain barrier disruption in Alzheimer's disease. *Brain Pathol*. 2013;23:303–310. doi: 10.1111/bpa.12004
104. Shi Y, Thrippleton MJ, Makin SD, Marshall I, Geerlings MI, de Craen AJM, van Buchem MA, Wardlaw JM. Cerebral blood flow in small vessel disease: a systematic review and meta-analysis. *J Cereb Blood Flow Metab*. 2016;36:1653–1667. doi: 10.1177/0271678X16662891
105. Immink RV, van Montfrans GA, Stam J, Karemaker JM, Diamant M, van Lieshout JJ. Dynamic cerebral autoregulation in acute lacunar and middle cerebral artery territory ischemic stroke. *Stroke*. 2005;36:2595–2600. doi: 10.1161/01.STR.0000189624.06836.03
106. Lammie GA, Brannan F, Wardlaw JM. Incomplete lacunar infarction (type Ib lacunes). *Acta Neuropathol. (Berl)*. 1998;96:163–171. doi: 10.1007/s004010050877
107. Simpson JE, Ince PG, Higham CE, Gelsthorpe CH, Fernando MS, Matthews F, Forster G, O'Brien JT, Barber R, Kalaria RN, et al; MRC Cognitive Function and Ageing Neuropathology Study Group. Microglial activation in white matter lesions and nonlesional white matter of ageing brains. *Neuropathol Appl Neurobiol*. 2007;33:670–683. doi: 10.1111/j.1365-2990.2007.00890.x
108. Low A, Mak E, Malpetti M, Passamonti L, Nicastro N, Stefaniak JD, Savulich G, Chouliaras L, Su LRowe JB, et al. In vivo neuroinflammation and cerebral small vessel disease in mild cognitive impairment and Alzheimer's disease. *J Neurol Neurosurg Psychiatry*. 2020;92:45–52. doi: 10.1136/jnnp-2020-323894
109. Walsh J, Tozer DJ, Sari H, Hong YT, Drazyk A, Williams G, Shah NJ, O'Brien JT, Aigbirhio FI, Rosenberg G, et al. Microglial activation and blood-brain barrier permeability in cerebral small vessel disease. *Brain*. 2021;144:1361–1371. doi: 10.1093/brain/awab003
110. Hassan A, Hunt BJ, O'Sullivan M, Parmar K, Bamford JM, Briley D, Brown MM, Thomas DJ, Markus HS. Markers of endothelial dysfunction in lacunar infarction and ischaemic leukoariosis. *Brain*. 2003;126:424–432. doi: 10.1093/brain/awg040
111. Low A, Mak E, Rowe JB, Markus HS, O'Brien JT. Inflammation and cerebral small vessel disease: a systematic review. *Ageing Res Rev*. 2019;53:100916. doi: 10.1016/j.arr.2019.100916
112. Santisteban MM, Iadecola C, Carnevale D. Hypertension, neurovascular dysfunction, and cognitive impairment. *Hypertension*. 2023;80:22–34. doi: 10.1161/HYPERTENSIONAHA.122.18085
113. Schuett H, Luchtefeld M, Grothusen C, Grote K, Schieffer B. How much is too much? Interleukin-6 and its signalling in atherosclerosis. *Thromb Haemost*. 2009;102:215–222. doi: 10.1160/TH09-05-0297
114. Berry C, Sidik N, Pereira AC, Ford TJ, Touyz RM, Kaski JC, Hainsworth AH. Small-vessel disease in the heart and brain: current knowledge, unmet therapeutic need, and future directions. *J Am Heart Assoc*. 2019;8:e011104. doi: 10.1161/JAHA.118.011104
115. Inagaki T, Fujiwara K, Shinohara Y, Azuma M, Yamazaki R, Mashima K, Sakamoto A, Yashiro T, Ohno N. Perivascular macrophages produce type I collagen around cerebral small vessels under prolonged hypertension in rats. *Histochem Cell Biol*. 2021;155:503–512. doi: 10.1007/s00418-020-01948-9
116. Faraco G, Sugiyama Y, Lane D, Garcia-Bonilla L, Chang H, Santisteban MM, Racchumi G, Murphy M, Van Rooijen N, Anrather J, et al. Perivascular macrophages mediate the neurovascular and cognitive dysfunction associated with hypertension. *J Clin Invest*. 2016;126:4674–4689. doi: 10.1172/JCI86950
117. Iadecola C, Smith EE, Anrather J, Gu C, Mishra A, Misra S, Perez-Pinzon MA, Shih AY, Sorond FA, van Veluw SJ, et al; American Heart Association Stroke Council Council on Arteriosclerosis Thrombosis and Vascular Biology Council on Cardiovascular Radiology and Intervention Council on Hypertension Council on Lifestyle and Cardiometabolic Health. The neurovasculome: key roles in brain health and cognitive impairment: a scientific statement from the American Heart Association/American Stroke Association. *Stroke*. 2023;54:e251–e271. doi: 10.1161/STR.0000000000000431
118. Wallin A, Alladi S, Black SE, Chen C, Greenberg SM, Gustafson D, Isaacs JD, Jokinen H, Kalaria R, Mok V, et al. What does aducanumab treatment of Alzheimer's disease mean for research on vascular cognitive disorders? *Cereb Circ Cogn Behav*. 2022;3:100044. doi: 10.1016/j.cccb.2022.100044
119. Yang AC, Vest RT, Kern F, Lee DP, Agam M, Maat CA, Losada PM, Chen MB, Schaum N, Khoury N, et al. A human brain vascular atlas reveals diverse mediators of Alzheimer's risk. *Nature*. 2022;603:885–892. doi: 10.1038/s41586-021-04369-3
120. Winkler EA, Kim CN, Ross JM, Garcia JH, Gil E, Oh I, Chen LQ, Wu D, Catapano JS, Raygor K, et al. A single-cell atlas of the normal and malformed human brain vasculature. *Science*. 2022;375:eabi7377. doi: 10.1126/science.abi7377