





# Ethnic disparities in progression rates for sight-threatening diabetic retinopathy in diabetic eye screening: a population-based retrospective cohort study

Abraham Olvera-Barrios <sup>1,2</sup>, Christopher G Owen <sup>3</sup>, John Anderson <sup>4</sup>, Alasdair N Warwick,<sup>1,5</sup> Ryan Chambers,<sup>4</sup> Louis Bolter,<sup>4</sup> Yue Wu,<sup>6,7</sup> Roshan Welikala,<sup>8</sup> Jiri Fajtl,<sup>8</sup> Sarah A Barman,<sup>8</sup> Paolo Remagnino,<sup>9</sup> Emily Y Chew,<sup>10</sup> Frederick L Ferris,<sup>11</sup> Aroon D Hingorani,<sup>5,12</sup> Reecha Sofat,<sup>12</sup> Aaron Y Lee,<sup>6,7</sup> Catherine Egan,<sup>1,2</sup> Adnan Tufail,<sup>1,2</sup> Alicja R Rudnicka <sup>3</sup> On behalf of the ARIAS Research Group

**To cite:** Olvera-Barrios A, Owen CG, Anderson J, et al. Ethnic disparities in progression rates for sight-threatening diabetic retinopathy in diabetic eye screening: a population-based retrospective cohort study. *BMJ Open Diab Res Care* 2023;**11**:e003683. doi:10.1136/bmjdr-2023-003683

► Additional supplemental material is published online only. To view, please visit the journal online (<http://dx.doi.org/10.1136/bmjdr-2023-003683>).

A non-peer-reviewed version of this article was submitted to preprints with the Lancet ([https://papers.ssrn.com/sol3/papers.cfm?abstract\\_id=4336087](https://papers.ssrn.com/sol3/papers.cfm?abstract_id=4336087)) on January 25, 2023.

Received 9 August 2023  
Accepted 8 September 2023



© Author(s) (or their employer(s)) 2023. Re-use permitted under CC BY. Published by BMJ.

For numbered affiliations see end of article.

**Correspondence to**  
Dr Alicja R Rudnicka;  
[arudnick@sgul.ac.uk](mailto:arudnick@sgul.ac.uk) and Dr Abraham Olvera-Barrios;  
[dr.olvera.a@gmail.com](mailto:dr.olvera.a@gmail.com)

## ABSTRACT

**Introduction** The English Diabetic Eye Screening Programme (DESP) offers people living with diabetes (PLD) annual eye screening. We examined incidence and determinants of sight-threatening diabetic retinopathy (STDR) in a sociodemographically diverse multi-ethnic population.

**Research design and methods** North East London DESP cohort data (January 2012 to December 2021) with 137 591 PLD with no retinopathy, or non-STDR at baseline in one/both eyes, were used to calculate STDR incidence rates by sociodemographic factors, diabetes type, and duration. HR from Cox models examined associations with STDR.

**Results** There were 16 388 incident STDR cases over a median of 5.4 years (IQR 2.8–8.2; STDR rate 2.214, 95% CI 2.214 to 2.215 per 100 person-years). People with no retinopathy at baseline had a lower risk of sight-threatening diabetic retinopathy (STDR) compared with those with non-STDR in one eye (HR 3.03, 95% CI 2.91 to 3.15,  $p < 0.001$ ) and both eyes (HR 7.88, 95% CI 7.59 to 8.18,  $p < 0.001$ ). Black and South Asian individuals had higher STDR hazards than white individuals (HR 1.57, 95% CI 1.50 to 1.64 and HR 1.36, 95% CI 1.31 to 1.42, respectively). Additionally, every 5-year increase in age at inclusion was associated with an 8% reduction in STDR hazards ( $p < 0.001$ ).

**Conclusions** Ethnic disparities exist in a health system limited by capacity rather than patient economic circumstances. Diabetic retinopathy at first screen is a strong determinant of STDR development. By using basic demographic characteristics, screening programmes or clinical practices can stratify risk for sight-threatening diabetic retinopathy development.

## INTRODUCTION

Diabetes is an increasing public health problem affecting 1 in 10 adults globally and a major cause of premature death and morbidity. The number of people with diabetes worldwide has almost quadrupled in the last two decades, from 151 million in

## WHAT IS ALREADY KNOWN ON THIS TOPIC

- ⇒ There is little evidence about diabetic retinopathy and sight-threatening diabetic retinopathy (STDR) incidence rates in subgroups of multi-ethnic populations in the UK.
- ⇒ Existing evidence shows non-white ethnic groups are more predisposed to diabetes and more prone to develop STDR when compared with white people.

## WHAT THIS STUDY ADDS

- ⇒ We provide STDR and any diabetic retinopathy incidence rates in a large sociodemographically diverse population.
- ⇒ Baseline diabetic retinopathy severity and young age are strong predictors for STDR development.
- ⇒ Non-white ethnic groups show greater incidence rates of STDR.

## HOW THIS STUDY MIGHT AFFECT RESEARCH, PRACTICE OR POLICY

- ⇒ Risk stratification provides clear progression rates to STDR based on routinely collected diabetic eye screening data from a single visit.
- ⇒ These incidence rates for diabetic retinopathy and STDR are definitive, and of importance for power calculations for future research.

the year 2000, to 537 million in 2021, and is projected to rise to 784 million in 2045, fueled by sizeable increases in low-income and middle-income countries.<sup>1</sup>

Diabetic retinopathy is a major complication of diabetes and a leading cause of incident sight impairment and blindness in the working age population.<sup>2,3</sup> Early detection and intervention for sight-threatening diabetic retinopathy, once clinically defined criteria are met, can prevent blindness and indirectly

reduce mortality.<sup>4</sup> Healthcare costs are almost doubled for patients with diabetic retinopathy when compared with individuals without the disease. In the UK, the lifetime cost of dealing with a diabetic retinopathy case was estimated to be up to £237 000 per person in the working age group, from which half the costs accounted for lack of productivity due to visual loss.<sup>5</sup> Since 2008, the UK offers nationwide annual diabetic eye screening (DES) to all people living with diabetes aged 12 years and older.<sup>4</sup>

Accurate identification of people with diabetes at high risk of sight-threatening complications remains a challenge.<sup>5–7</sup> Established risk factors for diabetic retinopathy (namely, glycemic control, duration of disease, and systemic arterial hypertension) account for only a small proportion of the variation in risk.<sup>8</sup> Demographic characteristics and social determinants of health are associated with diabetic retinopathy, however, there is little data from large-scale studies of sociodemographically diverse, multi-ethnic populations with standardised diabetic retinopathy grading, especially in the UK.

We report incidence rates (IR) of sight-threatening diabetic retinopathy, and examine sociodemographic associations of sight-threatening diabetic retinopathy, including ethnicity, age, sex, and deprivation in a large representative multi-ethnic population from the North East of London DES programme (NELDESP).

## METHODS

The study population comprised 200 304 people with diabetes registered in the NELDESP who were offered screening appointments from January 3, 2012 to December 31, 2021.

### Setting

The North East of London is an ethnically diverse region with higher than national average levels of deprivation and mortality.<sup>9</sup> The NELDESP is provided by the Homerton Healthcare NHS Foundation Trust, and serves people with diabetes living in inner-city areas with multi-ethnic populations. These are the boroughs of Newham, Redbridge, Tower Hamlets, and Waltham Forest, classified as the most ethnically diverse in London.<sup>10</sup> The boroughs of Hackney, Havering, and the borough of Barking and Dagenham, also have a substantial multi-ethnic population. The NELDESP adheres to English NHS DESP standards.<sup>11</sup> All people with diabetes aged  $\geq 12$  years are identified through the electronic 'General Practice to Diabetic Retinopathy Screening' coding system, which automatically notifies DESPs about new diabetes diagnoses. All new eligible people are invited for screening within 3 months of notification. Software is used to generate invitations to attend for screening appointments. Over the course of 1 year, every person eligible for DES is offered multiple opportunities to attend.<sup>12 13</sup>

Briefly, a screening visit entails history taking by specialist staff, visual acuity assessment, and capture

under pupil dilation of two 45° digital retinal images, centered on the fovea and optic nerve for each eye, respectively. Trained graders assess the images for presence and severity of diabetic retinopathy following a multilevel internally and externally quality-assured process.<sup>11</sup> As per the UK National Screening Committee classification system (NSC-UK) for diabetic retinopathy,<sup>14</sup> grades in order of increasing severity are: no retinopathy (R0), mild non-proliferative diabetic retinopathy (R1), severe non-proliferative diabetic retinopathy (R2), diabetic maculopathy (M1), and proliferative diabetic retinopathy (R3). Sight-threatening diabetic retinopathy (or referable diabetic retinopathy) comprises retinopathy grades greater than or equal to R2 and, for these, referral to hospital eye services for assessment/treatment is made.

### Data extraction and variables

We identified people registered in the NELDESP during the study period, calculated post code-derived index of multiple deprivation (IMD) rank scores for each episode and carried out an anonymised data extraction for all available appointments using structured query language searches. An anonymised database was created and stored within the Homerton Trust's network for analysis.

We included data from people with non-sight-threatening diabetic retinopathy at baseline (defined as the first recorded screen), and with at least two complete screening visits (n=137 591; online supplemental figure 1).

Routinely collected data from DES included age at first appointment (categorised as <45, 45 to <55, 55 to <65, and 65 years and older), sex, self-defined ethnicity (coded as per Office for National Statistics standards as: white, black, South Asian, Chinese, any other Asian, mixed, other, and unknown categories for the purpose of these analyses),<sup>15</sup> type of diabetes (type 2, type 1, other, and unknown), self-defined duration of diabetes, baseline retinopathy severity (coded as diabetic retinopathy absent in both eyes (R0M0), non-sight-threatening diabetic retinopathy (R1M0) in one eye only, and non-sight-threatening diabetic retinopathy (R1M0) in both eyes),<sup>6</sup> and IMD. The IMD combines and weights indicators of deprivation and is the nationally recognised measure of relative deprivation in England.<sup>6 16</sup> IMD scores were split into quintiles (where first and fifth are the most and least deprived, respectively) in accordance with 2019 English indices of deprivation.<sup>16</sup> Medication history, and metabolic data such as, haemoglobin A1c (HbA1c) or blood pressure measurements are not routinely collected in DES and were not available for analysis in this large cohort.

### Statistical analysis

The primary health outcome was progression to sight-threatening diabetic retinopathy (NSC-UK grades R2, R3, and/or M1) in at least one eye. We calculated IRs for any diabetic retinopathy and sight-threatening diabetic retinopathy. Our data are an example of panel data where,

due to the intervals of the screening episodes, the date of diagnosis does not necessarily correspond to the date of change in retinopathy status. However, given a median (IQR) of 1.0 (0.9–1.1) years between appointments in the NELDESP, and since differences between models for interval and right censored data are expected to be small in studies where individuals attend at regular intervals,<sup>17</sup> we undertook analyses using Cox proportional hazards (PH) model for right censored data (people who did not develop the outcome of interest were right censored at the time of last screening visit) to obtain HR for sight-threatening diabetic retinopathy adjusting for age, sex, baseline diabetic retinopathy, ethnicity, duration and type of diabetes, and IMD. Results from survival analysis for interval censored data are available as supplements. The proportionality assumption was assessed by graphical inspection of Schoenfeld residuals. As secondary analysis, we explored the associations for development of any diabetic retinopathy in people with no retinopathy at baseline with Cox regression.

Fully parametric accelerated failure time PH, and proportional odds models with different baseline distributions (Weibull, log-logistic, exponential, log-normal, and gamma) for interval censored data were fitted to obtain survival probabilities for sight-threatening diabetic retinopathy for people with different baseline characteristics. Parametric assumptions were tested graphically. The model with best fit defined by Akaike Information Criterion was the proportional odds model with baseline Weibull distribution. This model was used to create an online calculator to provide 10-year survival probabilities of individuals with different combinations of baseline characteristics (<https://bit.ly/NEL-diabetic-eye-screening-risk-calculator>).

Sensitivity analyses allowed for possible cumulative differences in duration of diabetes for people with baseline visits on the first two calendar years of our cohort by calculating IRs of sight-threatening diabetic retinopathy in the 2014–2021 cohort. All analyses were undertaken with R (V.4.2.2).<sup>18</sup> The survival<sup>17</sup> and icenReg<sup>19</sup> packages were used for survival analyses.

## RESULTS

A total of 137 591 people (73 840/137 591, 53.7% male) with a mean (SD) age of 56.8 (SD 14.8) years were included. There was a total of 16 388 incident sight-threatening diabetic retinopathy cases (82.9% M1, 13.2% R2, and 3.8% R3; online supplemental table 1 shows events in different ethnic groups by baseline diabetic retinopathy grade). Table 1 summarises our cohort baseline characteristics. Median (IQR) follow-up time was 5.4 (2.8–8.2) years. Among those that developed sight-threatening diabetic retinopathy, the median time to outcome was 4.0 (2.0–6.3) years overall, 5.2 (3.2–7.1) years for people with no retinopathy, 3.9 (2.1–6.1) years for people with retinopathy in one eye, and 2.7 (1.2–4.5) years for people with retinopathy in both eyes at baseline. Ethnicity codes were usable for 98.5% (135 487/137 591) of the

population; 37% (50 907/137 591) were white and 42.3% (58 195/137 591) of the sample lived in areas with the two highest IMD quintiles of deprivation (1 and 2).

### Prevalence and incidence of diabetic retinopathy and sight-threatening diabetic retinopathy

At first recorded visit, the point prevalence of any retinopathy and sight-threatening diabetic retinopathy was 27.5% (48 628/176 767), and 8.1% (14 231/176 767), respectively. The cumulative IR (CIR) of sight-threatening diabetic retinopathy was 2.21 (95% CI 2.21 to 2.21) per 100 person-years. Table 2 shows CIRs of sight-threatening diabetic retinopathy per 100 person-years by follow-up. Baseline retinopathy severity showed a strong relationship with sight-threatening diabetic retinopathy rates. Progression to sight-threatening diabetic retinopathy with advancing yearly intervals showed an overall monotonic increase in rates, which was more pronounced in younger age groups when compared with the consistently lower rates in older age groups (online supplemental table 2). Sensitivity analyses excluding the earliest 2 years of the study period did not materially alter sight-threatening diabetic retinopathy CIR (online supplemental table 3).

Cumulative incidence of any retinopathy and of sight-threatening diabetic retinopathy for participants with no retinopathy at baseline was 35.3% (38 059/107 701) and 6.6% (7116/107 701), respectively. The CIR (95% CI) of any retinopathy was 7.95 (7.95 to 7.95) per 100 person-years. The highest CIR for any retinopathy was observed in the other and South Asian ethnic groups (8.38 (95% CI 8.36 to 8.39) and 8.12 (95% CI 8.12 to 8.12) per 100 person-years, respectively). The highest CIR for sight-threatening diabetic retinopathy was observed in people of black and South Asian ethnicities (2.67 (95% CI 2.67 to 2.67) and 2.44 (95% CI 2.44 to 2.44) per 100 person-years, respectively). People of any other Asian ethnicity had the lowest IR for any diabetic retinopathy (7.48 (95% CI 7.47 to 7.48) per 100 person-years). People of Chinese ethnicity had the lowest CIR for sight-threatening diabetic retinopathy (1.65 (95% CI 1.63 to 1.67) per 100 person-years, respectively (online supplemental table 4)). CIR of any retinopathy per 100 person-years by follow-up is shown in online supplemental table 5.

### Survival probabilities and sociodemographic associations with sight-threatening diabetic retinopathy

Survival probabilities for sight-threatening diabetic retinopathy development stratified by retinopathy severity at baseline and age groups were consistently lower in younger people with non-sight-threatening diabetic retinopathy in both eyes at baseline (figure 1A). By year 5, 50.5% (95% CI 48.2 to 52.6) of those in the youngest age group (<45 years) with non-sight-threatening diabetic retinopathy at baseline in both eyes progressed to sight-threatening diabetic retinopathy compared with 19.0% (95% CI 17.4 to 20.6) in the same age group but with non-sight-threatening diabetic retinopathy in one eye only (figure 1A). Survival curves stratified by retinopathy

**Table 1** Baseline population characteristics among those without sight-threatening diabetic retinopathy at baseline

Characteristic	Overall, n=137 591*	No retinopathy, n=107 701†	Retinopathy in one eye, n=17 570†	Retinopathy in both eyes, n=12 320†
Follow-up (years)	5.4 (2.8)	5.5 (2.8)	5.4 (2.9)	4.4 (2.9)
Age at baseline	56.8 (14.8)	56.5 (14.8)	58.0 (14.6)	57.1 (15.1)
Age category (years)				
<45	28 173 (20%)	22 552 (21%)	3124 (18%)	2497 (20%)
45 to <55	32 982 (24%)	26 038 (24%)	4115 (23%)	2829 (23%)
55 to <65	33 798 (25%)	26 373 (24%)	4425 (25%)	3000 (24%)
65 and over	42 638 (31%)	32 738 (30%)	5906 (34%)	3994 (32%)
Sex				
Female	63 751 (46%)	51 233 (48%)	7615 (43%)	4903 (40%)
Male	73 840 (54%)	56 468 (52%)	9955 (57%)	7417 (60%)
Type of diabetes				
2	128 270 (93%)	101 363 (94%)	16 301 (93%)	10 606 (86%)
1	5130 (3.7%)	3141 (2.9%)	736 (4.2%)	1253 (10%)
Other	251 (0.2%)	219 (0.2%)	15 (<0.1%)	17 (0.1%)
Missing	3940 (2.9%)	2978 (2.8%)	518 (2.9%)	444 (3.6%)
Ethnicity				
White	50 907 (37%)	39 663 (37%)	6423 (37%)	4821 (39%)
South Asian	47 994 (35%)	37 951 (35%)	5992 (34%)	4051 (33%)
Black	22 095 (16%)	17 303 (16%)	2907 (17%)	1885 (15%)
Any other Asian	7741 (5.6%)	6013 (5.6%)	1039 (5.9%)	689 (5.6%)
Other	4051 (2.9%)	3097 (2.9%)	594 (3.4%)	360 (2.9%)
Mixed	1744 (1.3%)	1373 (1.3%)	206 (1.2%)	165 (1.3%)
Chinese	955 (0.7%)	745 (0.7%)	119 (0.7%)	91 (0.7%)
Unknown	2104 (1.5%)	1556 (1.4%)	290 (1.7%)	258 (2.1%)
Duration of diabetes	4.7 (6.4)	3.9 (5.4)	6.2 (7.2)	10.1 (9.2)
Index of multiple deprivation				
1	14 598 (11%)	11 537 (11%)	1792 (10%)	1269 (10%)
2	43 597 (32%)	34 155 (32%)	5527 (31%)	3915 (32%)
3	39 756 (29%)	31 167 (29%)	5064 (29%)	3525 (29%)
4	25 906 (19%)	20 114 (19%)	3408 (19%)	2384 (19%)
5	13 541 (9.8%)	10 600 (9.8%)	1746 (9.9%)	1195 (9.7%)
Missing	193 (0.1%)	128 (0.1%)	33 (0.2%)	32 (0.3%)

\*Mean (SD) for continuous variables, n (column %) for categorical variables.  
†No retinopathy (R0M0); retinopathy in one eye (R1M0 in one eye); retinopathy in both eyes (R1M0 in both eyes).

severity at baseline and the three major ethnic groups consistently showed lower survival probabilities for non-white ethnicities (figure 1B). At year 5, 46.0% (95% CI 43.4 to 48.3) and 45.0% (95% CI 43.3 to 46.6) of black and South Asian people with non-sight-threatening diabetic retinopathy in both eyes progressed to sight-threatening diabetic retinopathy, respectively. In contrast, at the same timepoint, 37.9% (95% CI 36.3 to 39.4) of white people with non-sight-threatening diabetic retinopathy in both eyes progressed to sight-threatening diabetic retinopathy. A Kaplan-Meier plot for interval censored data showed comparable findings (online supplemental figure 2).

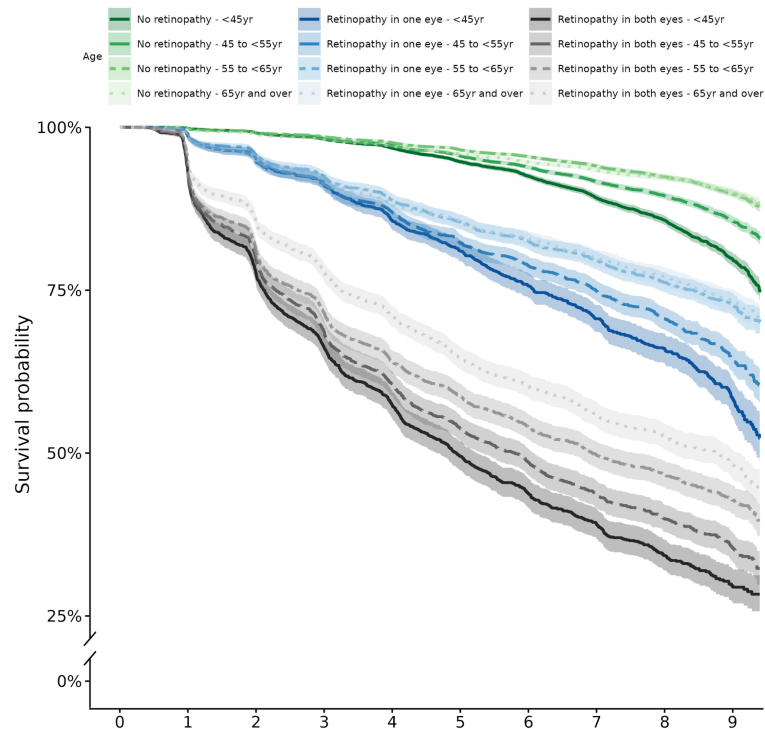
Table 3 summarises mutually adjusted HRs from our multivariable Cox model. Age categories showed a strong graded inverse association with hazards of sight-threatening diabetic retinopathy (p for linear trend <0.0001). Males showed a 4% increase in sight-threatening diabetic retinopathy hazards when compared with females (p=0.011). When compared with people with no retinopathy at baseline, people with non-sight-threatening diabetic retinopathy in one eye had a three-fold increase in sight-threatening diabetic retinopathy hazards, whereas people with non-sight-threatening diabetic retinopathy in both eyes at baseline showed an



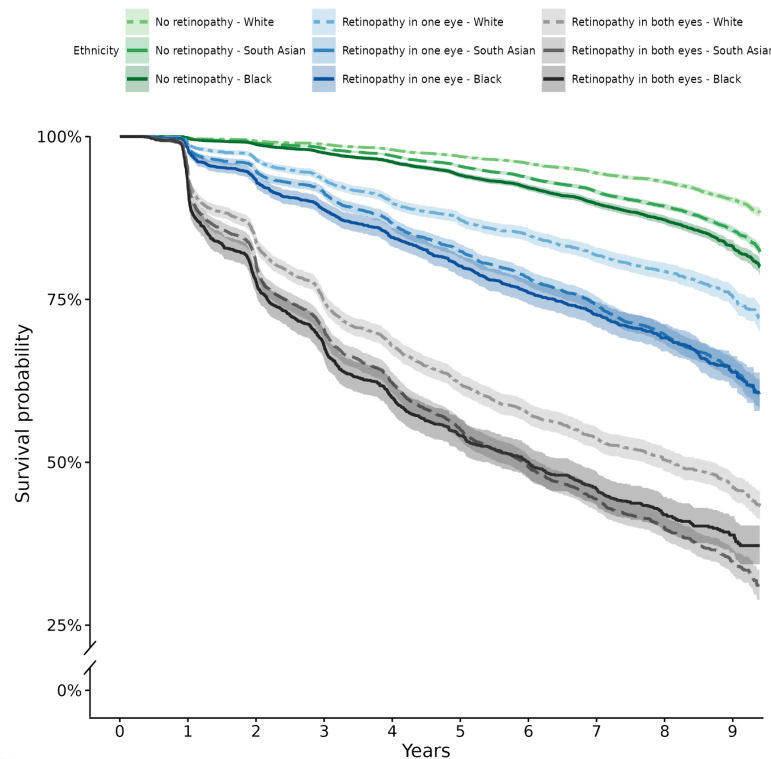
**Table 2** Cumulative incidence rates per 100 person-years for development of sight-threatening DR in at least one eye by length of follow-up with 95% CIs in parenthesis

Characteristic	Year 1	Year 2	Year 3	Year 4	Year 5	Year 10
Overall	0.86 (0.82 to 0.90)	1.48 (1.43 to 1.54)	1.66 (1.61 to 1.72)	1.78 (1.73 to 1.84)	1.89 (1.83 to 1.95)	2.21 (2.15 to 2.28)
Age group (years)						
<45	0.90 (0.81 to 0.99)	1.59 (1.47 to 1.72)	1.82 (1.69 to 1.95)	2.02 (1.88 to 2.15)	2.20 (2.05 to 2.34)	2.84 (2.68 to 3.01)
45 to <55	0.86 (0.78 to 0.95)	1.54 (1.43 to 1.66)	1.76 (1.64 to 1.88)	1.86 (1.73 to 1.98)	2.01 (1.88 to 2.13)	2.42 (2.28 to 2.55)
55 to <65	0.85 (0.77 to 0.93)	1.42 (1.31 to 1.52)	1.57 (1.46 to 1.69)	1.68 (1.56 to 1.79)	1.73 (1.61 to 1.84)	1.96 (1.84 to 2.09)
65 and over	0.84 (0.77 to 0.91)	1.41 (1.32 to 1.51)	1.55 (1.46 to 1.65)	1.66 (1.56 to 1.76)	1.72 (1.62 to 1.83)	1.87 (1.76 to 1.98)
Sex						
Female	0.78 (0.72 to 0.84)	1.36 (1.28 to 1.43)	1.55 (1.47 to 1.63)	1.68 (1.59 to 1.76)	1.77 (1.68 to 1.85)	2.08 (1.98 to 2.17)
Male	0.93 (0.87 to 0.99)	1.59 (1.51 to 1.67)	1.76 (1.68 to 1.84)	1.88 (1.80 to 1.96)	1.99 (1.91 to 2.08)	2.34 (2.25 to 2.43)
Ethnicity						
White	0.76 (0.69 to 0.82)	1.25 (1.17 to 1.33)	1.40 (1.31 to 1.49)	1.50 (1.42 to 1.59)	1.56 (1.47 to 1.65)	1.77 (1.68 to 1.87)
South Asian	0.85 (0.78 to 0.92)	1.53 (1.44 to 1.62)	1.71 (1.61 to 1.80)	1.85 (1.75 to 1.95)	1.99 (1.88 to 2.09)	2.44 (2.32 to 2.55)
Black	1.08 (0.97 to 1.19)	1.87 (1.72 to 2.02)	2.09 (1.93 to 2.25)	2.19 (2.03 to 2.36)	2.32 (2.15 to 2.49)	2.68 (2.50 to 2.86)
Any other Asian	0.84 (0.67 to 1.01)	1.52 (1.29 to 1.75)	1.68 (1.44 to 1.92)	1.86 (1.61 to 2.12)	2.02 (1.76 to 2.28)	2.24 (1.97 to 2.52)
Other	1.07 (0.80 to 1.34)	1.42 (1.11 to 1.72)	1.70 (1.37 to 2.04)	1.79 (1.45 to 2.14)	1.90 (1.55 to 2.26)	2.33 (1.94 to 2.71)
Mixed	0.75 (0.41 to 1.09)	1.33 (0.88 to 1.78)	1.70 (1.19 to 2.21)	1.94 (1.40 to 2.49)	2.14 (1.57 to 2.71)	2.41 (1.81 to 3.02)
Chinese	1.16 (0.59 to 1.73)	1.62 (0.95 to 2.29)	1.81 (1.10 to 2.52)	1.73 (1.04 to 2.43)	1.69 (1.00 to 2.38)	1.65 (0.97 to 2.33)
Unknown	0.91 (0.57 to 1.26)	2.09 (1.57 to 2.60)	2.51 (1.95 to 3.07)	2.59 (2.02 to 3.16)	2.64 (2.07 to 3.22)	2.61 (2.03 to 3.18)
Baseline DR grade						
No retinopathy	0.21 (0.19 to 0.23)	0.44 (0.41 to 0.48)	0.56 (0.52 to 0.59)	0.66 (0.62 to 0.70)	0.79 (0.75 to 0.84)	1.20 (1.15 to 1.26)
Retinopathy in one eye	1.23 (1.10 to 1.37)	2.37 (2.18 to 2.56)	2.78 (2.58 to 2.99)	3.16 (2.94 to 3.37)	3.33 (3.11 to 3.55)	3.80 (3.56 to 4.03)
Retinopathy in both eyes	6.04 (5.69 to 6.39)	9.81 (9.37 to 10.26)	10.61 (10.15 to 11.06)	10.78 (10.32 to 11.24)	10.77 (10.31 to 11.23)	10.43 (9.98 to 10.88)
DR, diabetic retinopathy.						

**A Baseline retinopathy severity and age**



**B Baseline retinopathy severity and ethnicity**



Number at risk	0	1	2	3	4	5	6	7	8	9
No retinopathy	107,701	104,228	91,324	80,020	69,747	59,356	50,019	40,508	30,247	11,574
Retinopathy in one eye	17,570	16,785	14,815	12,844	11,035	9,282	7,805	6,445	4,928	2,008
Retinopathy in both eyes	12,320	11,207	8,951	7,212	5,910	4,794	3,948	3,137	2,344	1,031
Number of events										
No retinopathy	0	224	679	710	810	977	853	943	753	790
Retinopathy in one eye	0	215	566	520	549	438	347	320	275	237
Retinopathy in both eyes	0	736	1,426	1,021	751	571	390	324	216	167

**Figure 1** Survival plots for development of sight-threatening diabetic retinopathy (STDR). Stratified by non-STDR at baseline (no retinopathy, non-STDR in one eye, non-STDR in both eyes) and age (A), and non-STDR at baseline and ethnicity (B). Shaded areas represent 95% CI.

eightfold increase in sight-threatening diabetic retinopathy hazards.

When compared with the white ethnic group, non-white ethnic groups showed increased sight-threatening diabetic retinopathy hazards. The biggest effect sizes were observed in people of black (HR 1.57; 95% CI 1.50 to 1.64), mixed (HR 1.39; 95% CI 1.20 to 1.60), and South Asian (HR 1.36; 95% CI 1.31 to 1.42) ethnicity. The Chinese ethnic group did not show differences for sight-threatening diabetic retinopathy when compared with white individuals. Formal tests for interaction between ethnicity with IMD were not statistically significant (p=0.21).

Every 5-year increase in duration of diabetes conferred a 14% increase in hazards of sight-threatening diabetic retinopathy. When compared with the highest deprivation quintile, only the least deprived quintile of IMD showed a 7% reduction in hazards of sight-threatening diabetic retinopathy (p=0.041). However, IMD was no longer formally statistically significant using interval censoring (online supplemental table 6). Type of diabetes did not appear to be associated with sight-threatening diabetic retinopathy in the adjusted regression model.

Associations for development of any diabetic retinopathy in people with no retinopathy at baseline (ROM0, n=107701) are shown in online supplemental table 7. When compared with type 2 diabetes, people with type 1 diabetes showed a strong association with the larger effect size for any retinopathy (HR 1.36, 95% CI 1.28 to 1.44), and every 5-year rise in duration of diabetes was associated with 18% increase in diabetic retinopathy hazards. Every 5-year increase in age conferred a 1% decrease in diabetic retinopathy hazards, males had a 6% increase in diabetic retinopathy hazards when compared with females, and ethnic differences were considerably less pronounced and only statistically significantly different from whites, for South Asian (HR 1.03, 95% CI 1.00 to 1.06), other (HR 1.09, 95% CI 1.02 to 1.16), and unknown (HR 1.36, 95% CI 1.21 to 1.54) ethnic groups. No associations were observed for IMD and any diabetic retinopathy.

### CONCLUSIONS

Our study provides definitive IRs for sight-threatening diabetic retinopathy by demographic characteristics routinely collected in DES. There is a strong relationship in CIR increases with retinopathy severity at baseline, and a monotonic increase in rates with advancing yearly intervals, more pronounced in younger people (table 2 and online supplemental table 2). Presence of retinopathy in both eyes, age, and ethnicity are strong determinants for incident sight-threatening diabetic retinopathy. We have defined and calculated sociodemographic associations with sight-threatening diabetic retinopathy, and we provide a web calculator (<https://bit.ly/NEL-diabetic-eye-screening-risk-calculator>) to estimate disease trajectories of individuals with different sociodemographic

**Table 3** Hazard ratios (HR) mutually adjusted for all factors shown

Characteristic	HR (95% CI)*	P value
Age (per 5-year increase)†	0.92 (0.92 to 0.93)	<b>1.0e-133</b>
Age category (years)		
<45	1.00	
45 to <55	0.79 (0.75 to 0.82)	<b>1.5e-26</b>
55 to <65	0.60 (0.58 to 0.63)	<b>1.1e-96</b>
65 and over	0.57 (0.54 to 0.59)	<b>1.4e-115</b>
Sex		
Female	1.00	
Male	1.04 (1.01 to 1.07)	<b>0.011</b>
Baseline DR grade‡		
No retinopathy	1.00	
Retinopathy in one eye	3.03 (2.91 to 3.15)	<b>4.6e-626</b>
Retinopathy in both eyes	7.88 (7.59 to 8.18)	<b>2.5e-2521</b>
Ethnicity		
White	1.00	
South Asian	1.36 (1.31 to 1.42)	<b>1.0e-52</b>
Black	1.57 (1.50 to 1.64)	<b>2.6e-81</b>
Any other Asian	1.25 (1.16 to 1.34)	<b>4.0e-10</b>
Other	1.29 (1.18 to 1.42)	<b>4.7e-08</b>
Mixed	1.39 (1.20 to 1.60)	<b>5.7e-06</b>
Chinese	0.98 (0.79 to 1.21)	0.831
Unknown	1.71 (1.41 to 2.07)	<b>4.8e-08</b>
Duration of diabetes (per 5-year increase)	1.14 (1.13 to 1.15)	<b>8.3e-138</b>
Type of diabetes		
2	1.00	
1	1.03 (0.97 to 1.11)	0.337
Other	0.73 (0.44 to 1.22)	0.231
Missing	1.34 (1.20 to 1.51)	<b>6.3e-07</b>
Deprivation (IMD quintiles)		
1	1.00	
2	1.04 (0.99 to 1.10)	0.141
3	1.03 (0.98 to 1.09)	0.281
4	0.98 (0.93 to 1.04)	0.592
5	0.93 (0.87 to 1.00)	<b>0.041</b>
Missing	1.68 (0.75 to 3.75)	0.208

HR >1 imply greater hazards for sight-threatening DR. Bold p values show statistically significant results.  
 \*Mutually adjusted HR from Cox model adjusting for age, sex, baseline DR severity, ethnicity, duration and type of diabetes and IMD.  
 †Models with age as continuous and categorical variable were fitted separately. Estimates are included in this table to show non-linear associations.  
 ‡No retinopathy (ROM0 in both eyes); retinopathy in one eye (R1M0 in one eye); retinopathy in both eyes (R1M0 in both eyes).  
 DR, diabetic retinopathy; IMD, index of multiple deprivation.

profiles. Young, male, non-white ethnic groups with longer duration of diabetes show higher sight-threatening diabetic retinopathy hazards when compared with older,

female, white groups, and those with shorter duration of diabetes.

Diabetic retinopathy status at baseline was the most important predictor for sight-threatening diabetic retinopathy referral to hospital eye services. When compared with people with no retinopathy at baseline, the threefold and almost eightfold increase in hazards of sight-threatening diabetic retinopathy for non-sight-threatening diabetic retinopathy in one eye and non-sight-threatening diabetic retinopathy in both eyes, respectively, is consistent with the reported HRs in the literature.<sup>5,6</sup> The absence of diabetic retinopathy and the presence of non-sight-threatening diabetic retinopathy in one or both eyes provides valuable information for simple risk stratification in groups of people that were previously considered of low homogeneous risk.<sup>6</sup>

Younger age groups have been reported to have higher incidence of sight-threatening diabetic retinopathy<sup>20–24</sup> and a recent analysis from observed data has shown that young people are at increased risk of experiencing significant delays in diagnosis of sight-threatening diabetic retinopathy if biennial screening intervals were to be implemented.<sup>25</sup> Derived from our analysis, we provide evidence of the presence of a different disease trajectory with increased risk of sight-threatening diabetic retinopathy in younger people (HR per 5-year rise in age 0.92,  $p < 0.001$ ). The causes are likely multiple, and result from a complex interplay of different factors that could be partially explained by higher levels of non-attendance to DES,<sup>12,13</sup> and by suboptimal control of diabetes and major modifiable risk factors<sup>26,27</sup> in young people. Individuals younger than 45 years of age are at a critical stage of their work, or career development, and the lifetime burden and health costs of sight-threatening complications in this population is of considerable public health importance.

Males are at higher risk of sight-threatening diabetic retinopathy development than females. Similar effect sizes to what is reported in our study are available.<sup>12,21,24</sup> An electronic medical record (EMR)-based study analysing the development of sight-threatening diabetic retinopathy in people with diabetes in the UK found an HR of 1.22 (95% CI 1.01 to 1.47) and 1.15 (95% CI 1.06 to 1.26) for males newly diagnosed, and males with known diagnosis of diabetes when compared with females, respectively.<sup>21</sup> Similarly, Mathur *et al* reported an increased relative risk of diabetic retinopathy (HR 1.08, 95% CI 1.05 to 1.09), and severe diabetic retinopathy (HR 1.25, 95% CI 1.12 to 1.39), in males when compared with females.<sup>22</sup> Lawrenson *et al* found a 23% increase in odds (95% CI 1.15 to 1.35) of sight-threatening diabetic retinopathy in males when compared with females in a 15-month limited follow-up DES study.<sup>12</sup> Non-attendance to DES,<sup>12,13</sup> and hormonal differences<sup>28</sup> are possible underpinning factors, but the evidence remains contradictory.

South Asian and black ethnic groups have been reported to have higher prevalence of diabetes,<sup>22,29,30</sup> and are more likely to develop both sight-threatening

diabetic retinopathy<sup>30</sup> and visual impairment<sup>31</sup> than white people. Sivaprasad *et al*<sup>30</sup> reported, in a predominantly white (66%) population, an 82% (HR 1.82, 95% CI 1.61 to 2.06) and 99% (HR 1.99, 95% CI 1.81 to 2.18) increase in risk of sight-threatening diabetic retinopathy in South Asian and black ethnic groups when compared with white people, respectively. Mathur *et al*<sup>22</sup> showed a 25% (HR 1.25, 95% CI 1.00 to 1.56) increase in risk of severe retinopathy (defined as advanced, proliferative, or laser-treated diabetic retinopathy) in South Asian patients when compared with white patients, however, a third of the ethnicity data were missing. Scanlon *et al*<sup>5</sup> showed a 55%, 58%, and 24% increase in hazards of sight-threatening diabetic retinopathy in African, Caribbean, and other ethnic groups when compared with white people in a small ( $n=1\,223$ ) dataset from South London. More recently, an EMR-based study with over 98% with usable ethnic coding, identified increased risk of sight-threatening diabetic retinopathy in African (HR 1.36, 95% CI 1.02 to 1.83), Indian (HR 1.38, 95% CI 1.17 to 1.63), Pakistani (HR 1.28, 95% CI 1.04 to 1.55), Bangladeshi (HR 1.36, 95% CI 1.19 to 1.54), Caribbean (HR 1.22, 95% CI 1.03 to 1.43), and other (HR 1.25, 95% CI 1.06 to 1.47) ethnicities with a new diagnosis of diabetes when compared with white individuals.<sup>21</sup> And Mangelis *et al*<sup>32</sup> identified a 39% increase in hazards of sight-threatening diabetic retinopathy ( $p=0.009$ ) in African Caribbeans with type 1 diabetes when compared with non-African Caribbean people. These results stress the need to address health inequalities across ethnic groups to improve prevention of sight-threatening complications.

Our study has several strengths. First, a large sample size providing considerable statistical power to detect associations (or absence of association) with sight-threatening diabetic retinopathy stratified by age, sex, ethnicity, retinopathy severity at baseline, and deprivation. Second, IRs provide an important source of reference to inform power calculations for future clinical trials. Third, there is high quality in ethnicity recording with usability of 98.5%. Fourth, the prevalence of any diabetic retinopathy falls in line with previous reports (27.5% prevalence overall, 49.1% and 26.4% in people with type 1 and type 2 diabetes, respectively) and is representative of the UK.<sup>5,22,33</sup> Fifth, retinopathy classification was performed by trained assessors following a multilevel internally and externally quality-assured grading protocol that meets UK national recommendations.<sup>11</sup>

The limitations of our study are as follows. First, HbA1c, blood pressure, blood lipids, medication history, or body mass index were not available for analysis. However, estimates of our Cox model are in alignment with reports from a previous EMR-based study which controlled for the above-mentioned variables.<sup>21</sup> Second, we cannot exclude human errors in grading of retinal fundus images despite the well-established grading protocol, but it is expected that, based on hospital eye service outcomes, findings of the study would not substantially differ.



Leveraging an unprecedented multi-ethnic and socio-demographically diverse population undergoing DES, our study delivers a contemporary analysis of sight-threatening diabetic retinopathy incidence and associated factors. IRs provided in our analysis are valuable for future research requiring estimates of transition probabilities or sample size. Our survival analysis revealed significant associations based on simple sociodemographic variables available in routine DES which offer significant information for risk stratification among people with diabetes. Understanding IR and associations of sight-threatening diabetic retinopathy in cohorts such as ours, illuminates paths for future research, identifies areas to optimise service planning, and equity in eye care. Further work to devise accurate prediction models and assess the potential contribution of clinical/metabolic, imaging, and imaging-derived data to risk prediction are essential next steps.

#### Author affiliations

- <sup>1</sup>NIHR Biomedical Research Centre, Moorfields Eye Hospital NHS Foundation Trust, London, UK  
<sup>2</sup>Institute of Ophthalmology, University College London, London, UK  
<sup>3</sup>Population Health Research Institute, St. George's University of London, London, UK  
<sup>4</sup>Diabetes, Homerton Healthcare NHS Foundation Trust, London, UK  
<sup>5</sup>Institute of Cardiovascular Science, University College London, London, UK  
<sup>6</sup>Department of Ophthalmology, University of Washington, Seattle, Washington, USA  
<sup>7</sup>Roger and Angie Keralis Johnson Retina Center, Seattle, Washington, USA  
<sup>8</sup>School of Computer Science and Mathematics, Kingston University, London, UK  
<sup>9</sup>Department of Computer Science, Durham University, Durham, UK  
<sup>10</sup>Division of Epidemiology and Clinical Applications, NEI/NIH, Bethesda, Maryland, USA  
<sup>11</sup>Ophthalmic Research Consultants, Charlotte, North Carolina, USA  
<sup>12</sup>Department of Pharmacology and Therapeutics, University of Liverpool, Liverpool, UK

**Collaborators** The Artificial Intelligence & Automated Retinal Image Analysis Systems (ARIAS) Research Group John Anderson, Sarah Barman, Louis Bolter, Ryan Chambers, Lakshmi Chandrasekaran, Umar Chaudhry, Emily Y Chew, Catherine Egan, Jiri Fajtl, Frederick L Ferris, Aroon D Hingorani, Aaron Y Lee, Abraham Olvera-Barrios, Christopher G Owen, Paolo Remagnino, Alicja R Rudnicka, Royce Shakespeare, Reecha Sofat, Adnan Tufail, Alasdair N Warwick, Charlotte Wahlich, Roshan Welikala, Kathryn Willis, Yue Wu.

**Contributors** The work was undertaken by the ARIAS Research Group. AO-B, CGO, ARR, JA, AT, and CE designed the study. JA, LB, and RC acquired the data. RC, JA, and AO-B curated the data. AO-B, CGO, and ARR undertook statistical analyses. AO-B, CGO, ARR, JA, and RC had direct access and verified the underlying data. AO-B wrote the first version of the manuscript. All authors, interpreted results, critically reviewed, and edited the manuscript. All authors had access to the data and have approved the decision to submit for publication. AO-B, ARR, CGO, and JA are the guarantors of this work and take responsibility for the integrity of the data and the accuracy of the data analysis. AO-B, RC, and JA had full access to all the data in the study.

**Funding** This work is funded by (i) NHS Transformation Directorate and The Health Foundation and it is managed by the National Institute for Health and Social Care Research (award number: AI\_HI200008) and (ii) The Wellcome Collaborative Award (2022, 224390/Z/21/Z).

**Disclaimer** The views expressed in this publication are those of the author(s) and not necessarily those of the NHS Transformation Directorate, The Health Foundation, National Institute for Health Research, or the Department of Health and Social Care.

**Competing interests** AYL: has received fees from Santen, Genetech, FDA, Johnson and Johnson, Carl Zeiss Meditec, Gyroscopic, Regeneron, and has a non-remunerative relation with Microsoft. CE: has received fees from Heidelberg

Engineering, Inozyme Pharma. AT: has received fees from Annexon, Apellis, Bayer, Genentech, Iveric Bio, Novartis, Oxurion, and Roche.

**Patient consent for publication** Not applicable.

**Ethics approval** The study was approved by the National Health Service (NHS) Health Research Authority and Health and Care Research Wales (IRAS project ID 265637). Approval from the head of research governance at the lead clinical center was obtained. Individual consent forms were not deemed necessary for ethics approval, as the study was confined to the utilization of retrospective anonymized data. The study was conducted in accordance with the Declaration of Helsinki.

**Provenance and peer review** Not commissioned; externally peer reviewed.

**Data availability statement** Data are available on reasonable request. The North East London Diabetic Eye Screening Programme data are not publicly available because of restrictions on data sharing. A fully anonymized dataset is available from the Programme on reasonable request.

**Supplemental material** This content has been supplied by the author(s). It has not been vetted by BMJ Publishing Group Limited (BMJ) and may not have been peer-reviewed. Any opinions or recommendations discussed are solely those of the author(s) and are not endorsed by BMJ. BMJ disclaims all liability and responsibility arising from any reliance placed on the content. Where the content includes any translated material, BMJ does not warrant the accuracy and reliability of the translations (including but not limited to local regulations, clinical guidelines, terminology, drug names and drug dosages), and is not responsible for any error and/or omissions arising from translation and adaptation or otherwise.

**Open access** This is an open access article distributed in accordance with the Creative Commons Attribution 4.0 Unported (CC BY 4.0) license, which permits others to copy, redistribute, remix, transform and build upon this work for any purpose, provided the original work is properly cited, a link to the licence is given, and indication of whether changes were made. See: <https://creativecommons.org/licenses/by/4.0/>.

#### ORCID iDs

Abraham Olvera-Barrios <http://orcid.org/0000-0002-3305-4465>  
 Christopher G Owen <http://orcid.org/0000-0003-1135-5977>  
 John Anderson <http://orcid.org/0000-0002-2355-9742>  
 Alicja R Rudnicka <http://orcid.org/0000-0003-0369-8574>

#### REFERENCES

- Sun H, Saeedi P, Karuranga S, *et al*. IDF diabetes atlas: global, regional and country-level diabetes prevalence estimates for 2021 and projections for 2045. *Diabetes Res Clin Pract* 2022;183:109119.
- Liew G, Michaelides M, Bunce C. A comparison of the causes of blindness certifications in England and Wales in working age adults (16–64 years), 1999–2000 with 2009–2010. *BMJ Open* 2014;4:e004015.
- Olvera-Barrios A, Mishra AV, Schwartz R, *et al*. Formal registration of visual impairment in people with diabetic retinopathy significantly underestimates the scale of the problem: a retrospective cohort study at a tertiary care eye hospital service in the UK. *Br J Ophthalmol* 2022;bjophthalmol-2022-321910.
- Scanlon PH. The contribution of the English NHS diabetic eye screening programme to reductions in diabetes-related blindness, comparisons within Europe, and future challenges. *Acta Diabetol* 2021;58:521–30.
- Scanlon PH, Aldington SJ, Leal J, *et al*. Development of a cost-effectiveness model for optimisation of the screening interval in diabetic retinopathy screening. *Health Technol Assess* 2015;19:1–116.
- Stratton IM, Aldington SJ, Taylor DJ, *et al*. A simple risk stratification for time to development of sight-threatening diabetic retinopathy. *Diabetes Care* 2013;36:580–5.
- Tarasewicz D, Karter AJ, Pimentel N, *et al*. Development and validation of a diabetic retinopathy risk stratification algorithm. *Diabetes Care* 2023;46:1068–75.
- Lachin JM, Genuth S, Nathan DM, *et al*. Effect of Glycemic exposure on the risk of microvascular complications in the diabetes control and complications trial--revisited. *Diabetes* 2008;57:995–1001.
- Public Health England. Screening quality assurance visit report - NHS diabetic eye screening service North East London diabetic eye screening programme. 2017. Available: [https://assets.publishing.service.gov.uk/government/uploads/system/uploads/attachment\\_data/file/657800/North\\_east\\_london\\_qa\\_visit\\_diabetic\\_eye\\_executive\\_summary\\_may\\_2017.pdf](https://assets.publishing.service.gov.uk/government/uploads/system/uploads/attachment_data/file/657800/North_east_london_qa_visit_diabetic_eye_executive_summary_may_2017.pdf) [Accessed 18 Oct 2022].

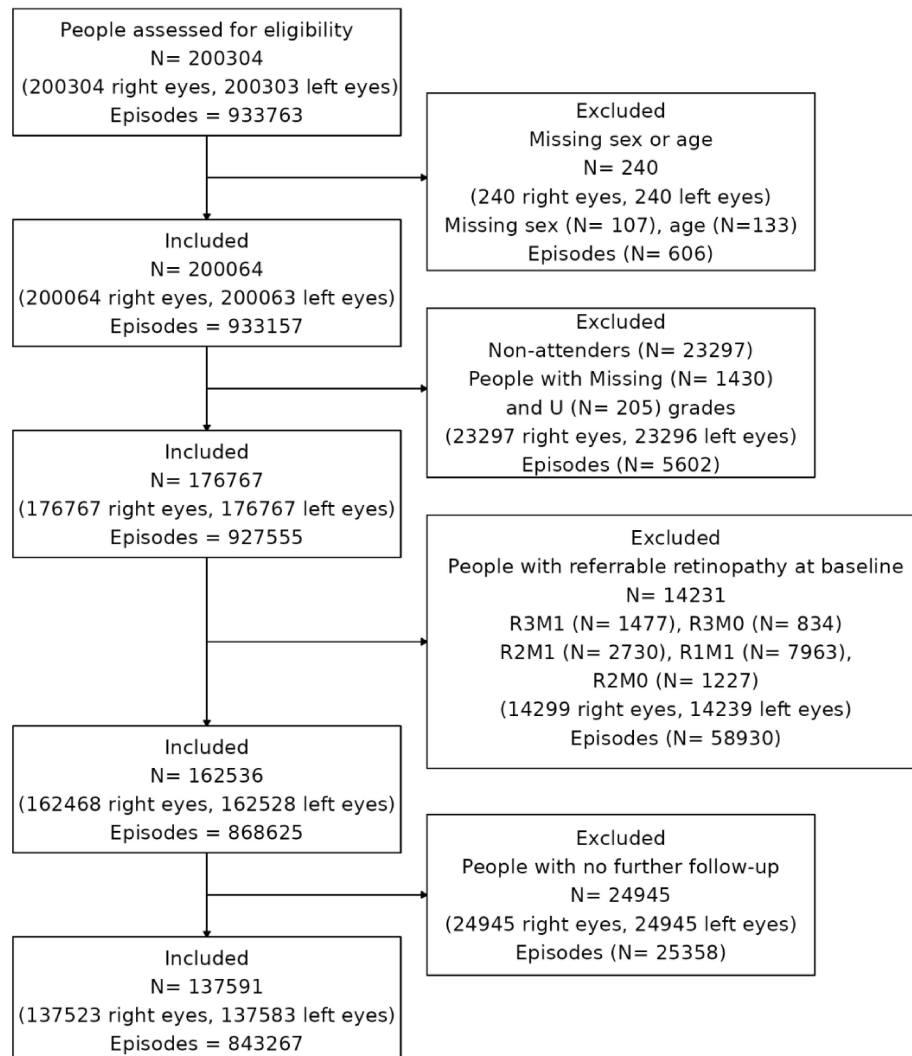
- 10 Office for National Statistics. Regional ethnic diversity. Available: <https://www.ethnicity-facts-figures.service.gov.uk/uk-population-by-ethnicity/national-and-regional-populations/regional-ethnic-diversity/latest> [Accessed 18 Oct 2022].
- 11 Diabetic eye screening programme: standards. GOV.UK Public Health England; 2019. Available: <https://www.gov.uk/government/publications/diabetic-eye-screening-programme-standards> [Accessed 18 Oct 2022].
- 12 Lawrenson JG, Bourmpaki E, Bunce C, *et al.* Trends in diabetic retinopathy screening attendance and associations with vision impairment attributable to diabetes in a large nationwide cohort. *Diabet Med* 2021;38:e14425.
- 13 Olvera-Barrios A, Seltene M, Heeren TFC, *et al.* Effect of Ethnicity and other sociodemographic factors on attendance at diabetic eye screening: a 12-month retrospective cohort study. *BMJ Open* 2021;11:e046264.
- 14 Harding S, Greenwood R, Aldington S, *et al.* Grading and disease management in national screening for diabetic retinopathy in England and Wales. *Diabet Med* 2003;20:965–71.
- 15 Statistics O of N. Ethnicity and national identity in England and Wales. Available: <https://www.ons.gov.uk/peoplepopulationandcommunity/culturalidentity/ethnicity> [Accessed 29 Jan 2022].
- 16 English indices of deprivation. GOV.UK Office for National Statistics; 2019. Available: <https://www.gov.uk/government/statistics/english-indices-of-deprivation-2019> [Accessed 18 Oct 2022].
- 17 Therneau TM. A package for survival analysis in R. 2022. Available: <https://CRAN.R-project.org/package=survival>
- 18 R Core Team. R: a language and environment for statistical computing. Vienna, Austria; 2022. Available: <https://www.R-project.org/>
- 19 Anderson-Bergman C. icenReg: regression models for interval censored data in R. *J Stat Softw* 2017;81:1–23.
- 20 Lee CS, Lee AY, Baughman D, *et al.* The United Kingdom diabetic retinopathy electronic medical record users group: report 3: baseline retinopathy and clinical features predict progression of diabetic retinopathy. *Am J Ophthalmol* 2017;180:64–71.
- 21 Nugawela MD, Gurudas S, Prevost AT, *et al.* Ethnic disparities in the development of sight-threatening diabetic retinopathy in a UK multi-ethnic population with diabetes: an observational cohort study. *J Pers Med* 2021;11:740.
- 22 Mathur R, Bhaskaran K, Edwards E, *et al.* Population trends in the 10-year incidence and prevalence of diabetic retinopathy in the UK: a cohort study in the clinical practice research datalink 2004–2014. *BMJ Open* 2017;7:e014444.
- 23 Davis MD, Fisher MR, Gangnon RE, *et al.* Risk factors for high-risk proliferative diabetic retinopathy and severe visual loss: early treatment diabetic retinopathy study report #18. *Invest Ophthalmol Vis Sci* 1998;39:233–52.
- 24 Sabanayagam C, Banu R, Chee ML, *et al.* Incidence and progression of diabetic retinopathy: a systematic review. *Lancet Diabetes Endocrinol* 2019;7:140–9.
- 25 Olvera-Barrios A, Rudnicka AR, Anderson J, *et al.* Two-year recall for people with no diabetic retinopathy: a multi-ethnic population-based retrospective cohort study using real-world data to quantify the effect. *Br J Ophthalmol* 2023;bjo-2023-324097.
- 26 Wang L, Li X, Wang Z, *et al.* Trends in prevalence of diabetes and control of risk factors in diabetes among US adults, 1999–2018. *JAMA* 2021;326:1–13.
- 27 Schmieder RE, Tschöpe D, Koch C, *et al.* Individualised treatment targets in patients with type-2 diabetes and hypertension. *Cardiovasc Diabetol* 2018;17:18.
- 28 Lam JSH, Tay WT, Aung T, *et al.* Female reproductive factors and major eye diseases in Asian women -The Singapore Malay eye study. *Ophthalmic Epidemiol* 2014;21:92–8.
- 29 Pham TM, Carpenter JR, Morris TP, *et al.* Ethnic differences in the prevalence of type 2 diabetes diagnoses in the UK: cross-sectional analysis of the health improvement network primary care database. *Clin Epidemiol* 2019;11:1081–8.
- 30 Sivaprasad S, Gupta B, Gulliford MC, *et al.* Ethnic variations in the prevalence of diabetic retinopathy in people with diabetes attending screening in the United Kingdom (DRIVE UK). *PLoS One* 2012;7:e32182.
- 31 Sivaprasad S, Gupta B, Gulliford MC, *et al.* Ethnic variation in the prevalence of visual impairment in people attending diabetic retinopathy screening in the United Kingdom (DRIVE UK). *PLoS One* 2012;7:e39608.
- 32 Mangelis A, Wijewickrama P, Nirmalakumaran A, *et al.* People with type 1 diabetes of African Caribbean Ethnicity are at increased risk of developing sight-threatening diabetic retinopathy. *Diabetes Care* 2023;46:1091–7.
- 33 Thomas RL, Dunstan FD, Luzio SD, *et al.* Prevalence of diabetic retinopathy within a national diabetic retinopathy screening service. *Br J Ophthalmol* 2015;99:64–8.

## Supplementary material

### Table of Contents

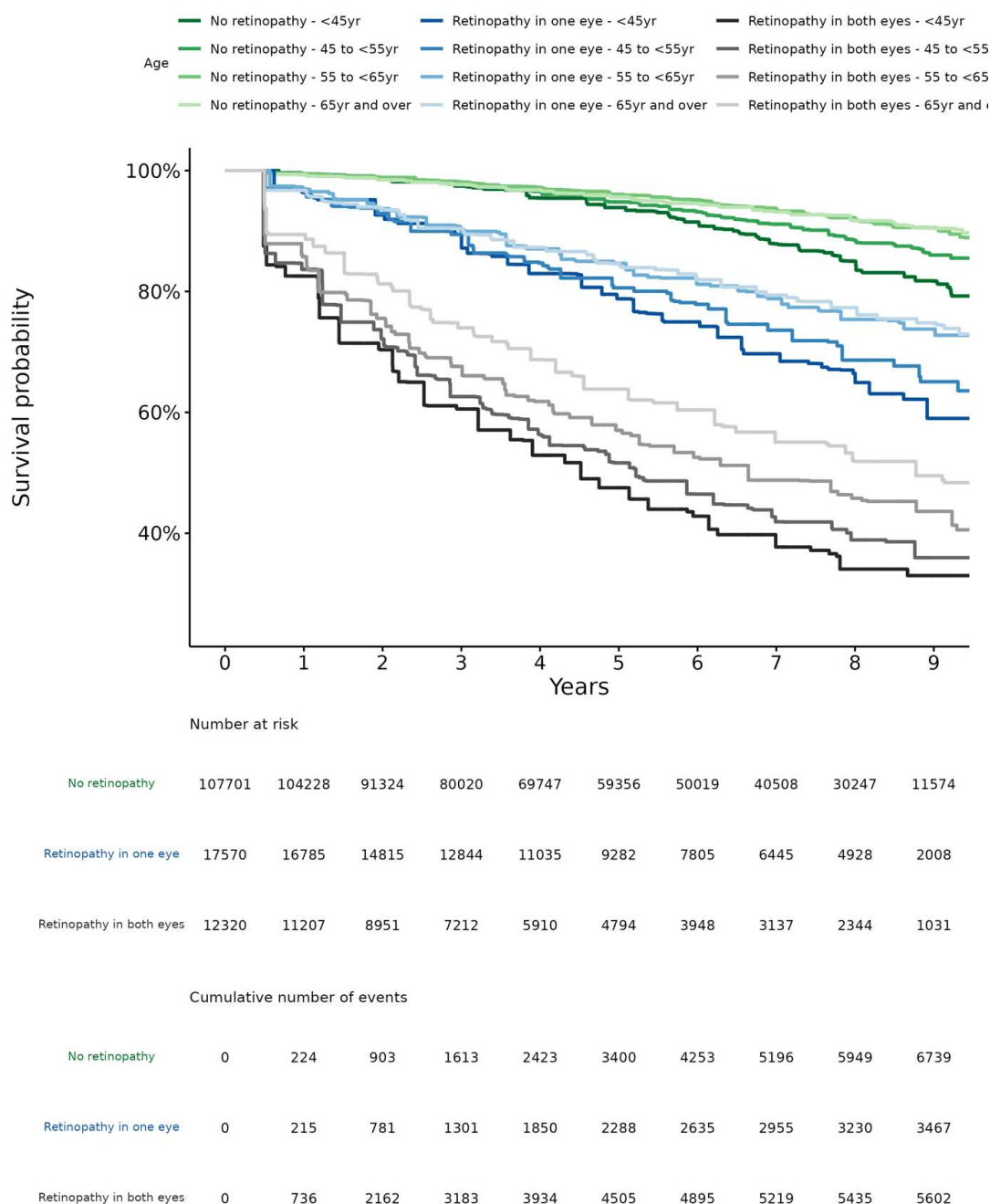
Supplementary figure 1. Diagram of exclusions. ....	2
Supplementary figure 2. Survival plot for development of referable diabetic retinopathy fitted with interval censoring and the Turnbull estimator stratified by baseline diabetic retinopathy grade and age..	3
Supplementary table 1. Sight-threatening diabetic retinopathy events in ethnic groups by baseline diabetic retinopathy grade at baseline. ....	4
Supplementary table 2. Incidence rate of sight-threatening-diabetic-retinopathy per 100 person-years by follow-up period (95% confidence intervals). ....	5
Supplementary table 3. Sensitivity analysis using incidence rate of referable diabetic retinopathy per 100 person-years by follow-up period defined by 95% confidence intervals. Excluding people from the earliest 2 years of study period (see table 3 of our manuscript for comparison). ....	6
Supplementary table 4. Incidence rates of any diabetic retinopathy (people with R0M0 at first screen, n = 107,701) and sight-threatening diabetic retinopathy (people with R0M0 and R1M0 at first screen, n = 137,591) per 100 person-years by ethnic group.....	7
Supplementary table 5. Cumulative incidence rate of any diabetic retinopathy per 100 person-years by follow-up (95% confidence intervals). ....	8
Supplementary table 6. Semi-parametric multivariable Cox proportional hazards model for interval censored data. Hazard ratios (HR) are mutually adjusted for all factors shown in the table. HR greater than 1 imply greater hazards for vision-threatening diabetic retinopathy (DR). Bold p-values show statistically significant results. ....	9
Supplementary table 7. Multivariable Cox proportional hazards model for right censored data with development of any diabetic retinopathy (DR) as outcome of interest. Hazard ratios (HR) are mutually adjusted for all factors shown in the table. HR greater than 1 imply greater hazards for DR. Bold p-values show statistically significant results.....	10

## Supplementary figure 1. Diagram of exclusions.





### Supplementary figure 2. Survival plot for development of referable diabetic retinopathy fitted with interval censoring and the Turnbull estimator stratified by baseline diabetic retinopathy grade and age.



### Supplementary table 1. Sight-threatening diabetic retinopathy events in ethnic groups by baseline diabetic retinopathy grade at baseline.

Characteristic	Overall, N = 16,388	No retinopathy, N = 7,116	Retinopathy in one eye, N = 3,583	Retinopathy in both eyes, N = 5,689
<b>Ethnicity</b>				
White	4,782 (29%)	1,854 (26%)	992 (28%)	1,936 (34%)
South Asian	6,532 (40%)	2,942 (41%)	1,463 (41%)	2,127 (37%)
Black	3,186 (19%)	1,542 (22%)	716 (20%)	928 (16%)
Any other Asian	990 (6.0%)	394 (5.5%)	239 (6.7%)	357 (6.3%)
Other	503 (3.1%)	231 (3.2%)	106 (3.0%)	166 (2.9%)
Mixed	201 (1.2%)	88 (1.2%)	34 (0.9%)	79 (1.4%)
Chinese	85 (0.5%)	29 (0.4%)	15 (0.4%)	41 (0.7%)
Unknown	109 (0.7%)	36 (0.5%)	18 (0.5%)	55 (1.0%)

n (column %)

## Supplementary table 2. Incidence rate of sight-threatening-diabetic-retinopathy per 100 person-years by follow-up period (95% confidence intervals).

Characteristic	0-1yr	1-2yr	2-3yr	3-4yr	4-5yr	5-10yr
<b>Overall</b>	0.86 (0.82 - 0.90)	2.18 (2.11 - 2.24)	2.09 (2.03 - 2.16)	2.26 (2.19 - 2.34)	2.48 (2.39 - 2.57)	3.10 (2.99 - 3.20)
<b>Age groups</b>						
Less than 45 years	0.90 (0.81 - 0.99)	2.38 (2.23 - 2.53)	2.39 (2.22 - 2.56)	2.82 (2.62 - 3.01)	3.32 (3.09 - 3.55)	4.89 (4.58 - 5.20)
45 to <55 years	0.86 (0.78 - 0.95)	2.29 (2.15 - 2.43)	2.26 (2.12 - 2.41)	2.25 (2.09 - 2.40)	2.85 (2.66 - 3.03)	3.49 (3.26 - 3.71)
55 to <65 years	0.85 (0.77 - 0.93)	2.04 (1.91 - 2.17)	1.94 (1.81 - 2.08)	2.07 (1.92 - 2.22)	2.00 (1.85 - 2.15)	2.54 (2.35 - 2.72)
65 years and over	0.84 (0.77 - 0.91)	2.06 (1.94 - 2.18)	1.90 (1.78 - 2.01)	2.09 (1.96 - 2.23)	2.08 (1.93 - 2.22)	2.28 (2.11 - 2.45)
<b>Sex</b>						
Female	0.78 (0.72 - 0.84)	2.00 (1.91 - 2.09)	2.02 (1.92 - 2.12)	2.15 (2.04 - 2.26)	2.29 (2.17 - 2.41)	2.89 (2.74 - 3.04)
Male	0.93 (0.87 - 0.99)	2.33 (2.24 - 2.42)	2.16 (2.06 - 2.26)	2.36 (2.25 - 2.47)	2.65 (2.53 - 2.77)	3.29 (3.14 - 3.44)
<b>Ethnicity</b>						
White	0.76 (0.69 - 0.82)	1.80 (1.70 - 1.90)	1.76 (1.66 - 1.87)	1.92 (1.80 - 2.04)	1.87 (1.75 - 2.00)	2.37 (2.21 - 2.52)
South Asian	0.85 (0.78 - 0.92)	2.28 (2.16 - 2.39)	2.12 (2.00 - 2.23)	2.40 (2.27 - 2.53)	2.74 (2.59 - 2.89)	3.62 (3.43 - 3.80)
Black	1.08 (0.97 - 1.19)	2.75 (2.56 - 2.93)	2.63 (2.44 - 2.82)	2.59 (2.38 - 2.80)	3.05 (2.81 - 3.29)	3.65 (3.36 - 3.93)
Any other Asian	0.84 (0.67 - 1.01)	2.26 (1.98 - 2.54)	2.04 (1.76 - 2.33)	2.57 (2.23 - 2.91)	2.87 (2.49 - 3.25)	2.80 (2.40 - 3.21)
Other	1.07 (0.80 - 1.34)	1.81 (1.46 - 2.16)	2.39 (1.96 - 2.83)	2.16 (1.72 - 2.61)	2.53 (2.02 - 3.05)	3.46 (2.81 - 4.11)
Mixed	0.75 (0.41 - 1.09)	1.98 (1.42 - 2.54)	2.65 (1.95 - 3.36)	3.00 (2.17 - 3.83)	3.44 (2.46 - 4.42)	3.31 (2.25 - 4.37)
Chinese	1.16 (0.59 - 1.73)	2.13 (1.35 - 2.92)	2.29 (1.42 - 3.16)	1.41 (0.67 - 2.15)	1.44 (0.64 - 2.24)	1.56 (0.66 - 2.46)
Unknown	0.91 (0.57 - 1.26)	4.18 (3.36 - 5.00)	5.20 (3.88 - 6.51)	3.77 (2.03 - 5.51)	4.06 (1.73 - 6.39)	2.02 (-0.10 - 4.15)
<b>Baseline DR grade</b>						
No retinopathy	0.21 (0.19 - 0.23)	0.70 (0.66 - 0.74)	0.83 (0.78 - 0.88)	1.08 (1.02 - 1.14)	1.51 (1.43 - 1.59)	2.30 (2.20 - 2.40)
Retinopathy in one eye	1.23 (1.10 - 1.37)	3.63 (3.40 - 3.87)	3.79 (3.53 - 4.05)	4.61 (4.31 - 4.92)	4.33 (4.01 - 4.65)	5.05 (4.68 - 5.42)
Retinopathy in both eyes	6.04 (5.69 - 6.39)	14.48 (13.94 - 15.03)	12.79 (12.21 - 13.37)	11.57 (10.95 - 12.19)	10.75 (10.08 - 11.41)	9.30 (8.61 - 9.99)

**Supplementary table 3. Sensitivity analysis using incidence rate of referable diabetic retinopathy per 100 person-years by follow-up period defined by 95% confidence intervals. Excluding people from the earliest 2 years of study period (see table 3 of our manuscript for comparison).**

<b>Characteristic</b>	<b>0-1yr</b>	<b>1-2yr</b>	<b>2-3yr</b>	<b>3-4yr</b>	<b>4-5yr</b>	<b>5-8yr</b>
<b>Overall</b>	0.65 (0.60 - 0.71)	1.65 (1.56 - 1.74)	1.56 (1.46 - 1.66)	1.69 (1.57 - 1.81)	2.37 (2.21 - 2.54)	2.99 (2.76 - 3.22)
<b>Age groups</b>						
Less than 45 years	0.88 (0.76 - 1.01)	1.98 (1.79 - 2.17)	1.92 (1.71 - 2.13)	2.31 (2.04 - 2.57)	3.34 (2.97 - 3.72)	3.87 (3.36 - 4.38)
45 to <55 years	0.57 (0.47 - 0.67)	1.58 (1.41 - 1.75)	1.67 (1.47 - 1.87)	1.48 (1.27 - 1.69)	2.42 (2.11 - 2.73)	2.94 (2.52 - 3.37)
55 to <65 years	0.54 (0.44 - 0.65)	1.36 (1.19 - 1.53)	1.28 (1.09 - 1.46)	1.59 (1.36 - 1.83)	1.90 (1.60 - 2.19)	2.39 (1.97 - 2.80)
65 years and over	0.59 (0.48 - 0.70)	1.64 (1.45 - 1.83)	1.29 (1.10 - 1.49)	1.29 (1.07 - 1.52)	1.64 (1.34 - 1.94)	2.64 (2.17 - 3.12)
<b>Sex</b>						
Female	0.53 (0.46 - 0.60)	1.37 (1.25 - 1.49)	1.30 (1.17 - 1.43)	1.42 (1.26 - 1.59)	2.06 (1.83 - 2.28)	2.66 (2.34 - 2.98)
Male	0.76 (0.68 - 0.84)	1.89 (1.76 - 2.02)	1.78 (1.64 - 1.93)	1.91 (1.74 - 2.09)	2.64 (2.41 - 2.88)	3.27 (2.94 - 3.60)
<b>Ethnicity</b>						
White	0.51 ( 0.42 - 0.59)	1.40 ( 1.25 - 1.54)	1.40 ( 1.24 - 1.56)	1.61 ( 1.41 - 1.81)	1.88 ( 1.62 - 2.14)	2.21 ( 1.86 - 2.56)
South Asian	0.73 ( 0.63 - 0.82)	1.64 ( 1.49 - 1.79)	1.46 ( 1.31 - 1.62)	1.80 ( 1.60 - 1.99)	2.51 ( 2.25 - 2.78)	3.22 ( 2.85 - 3.60)
Black	0.72 ( 0.58 - 0.87)	2.25 ( 1.99 - 2.51)	1.93 ( 1.65 - 2.20)	1.59 ( 1.31 - 1.88)	2.75 ( 2.31 - 3.18)	4.04 ( 3.38 - 4.70)
Any other Asian	0.67 ( 0.43 - 0.91)	1.72 ( 1.33 - 2.11)	1.43 ( 1.03 - 1.83)	1.52 ( 1.06 - 1.98)	2.79 ( 2.06 - 3.51)	3.15 ( 2.18 - 4.11)
Other	0.92 ( 0.54 - 1.29)	1.59 ( 1.08 - 2.09)	2.54 ( 1.81 - 3.26)	1.68 ( 0.98 - 2.38)	2.42 ( 1.43 - 3.42)	3.19 ( 1.78 - 4.59)
Mixed	0.73 ( 0.28 - 1.17)	0.88 ( 0.37 - 1.39)	2.14 ( 1.25 - 3.03)	2.43 ( 1.29 - 3.57)	3.23 ( 1.65 - 4.81)	2.56 ( 0.81 - 4.30)
Chinese	0.66 ( 0.04 - 1.27)	1.32 ( 0.42 - 2.23)	1.68 ( 0.53 - 2.83)	0.46 (-0.25 - 1.17)	2.68 ( 0.73 - 4.63)	0.00 ( 0.00 - 0.00)
Unknown	0.87 ( 0.20 - 1.54)	3.01 ( 1.56 - 4.45)	2.05 ( 0.42 - 3.69)	4.15 ( 0.88 - 7.41)	2.56 (-0.97 - 6.10)	3.33 (-2.06 - 8.73)
<b>Baseline DR grade</b>						
No retinopathy	0.18 ( 0.15 - 0.21)	0.60 ( 0.54 - 0.66)	0.68 ( 0.61 - 0.75)	0.91 ( 0.81 - 1.00)	1.48 ( 1.34 - 1.62)	2.13 ( 1.92 - 2.35)
Retinopathy in one eye	1.20 ( 0.97 - 1.44)	3.41 ( 3.01 - 3.81)	3.65 ( 3.19 - 4.11)	3.94 ( 3.39 - 4.50)	5.32 ( 4.57 - 6.07)	6.76 ( 5.68 - 7.83)
Retinopathy in both eyes	6.87 ( 6.13 - 7.61)	16.72 (15.56 - 17.88)	13.99 (12.70 - 15.28)	12.56 (11.07 - 14.04)	14.96 (13.03 - 16.90)	13.61 (11.20 - 16.03)



**Supplementary table 4. Incidence rates of any diabetic retinopathy (people with R0M0 at first screen, n = 107,701) and sight-threatening diabetic retinopathy (people with R0M0 and R1M0 at first screen, n = 137,591) per 100 person-years by ethnic group.**

<b>Ethnicity</b>	<b>Any DR IR (95% CI)</b>	<b>STDR IR (95% CI)</b>
White	7.78 (7.78 - 7.78)	1.77 (1.77 - 1.77)
South Asian	8.12 (8.12 - 8.12)	2.44 (2.44 - 2.44)
Black	8.04 (8.03 - 8.04)	2.68 (2.68 - 2.68)
Any other Asian	7.48 (7.47 - 7.48)	2.24 (2.24 - 2.25)
Other	8.38 (8.36 - 8.39)	2.33 (2.32 - 2.33)
Mixed	7.66 (7.63 - 7.70)	2.41 (2.40 - 2.43)
Chinese	8.06 (8.00 - 8.12)	1.65 (1.63 - 1.67)
Unknown	9.33 (9.29 - 9.36)	2.61 (2.59 - 2.62)

### Supplementary table 5. Cumulative incidence rate of any diabetic retinopathy per 100 person-years by follow-up (95% confidence intervals).

Characteristic	Year 1	Year 2	Year 3	Year 4	Year 5	Year 10
<b>Overall</b>	3.64 (3.54 - 3.73)	6.37 (6.24 - 6.49)	6.97 (6.84 - 7.09)	7.22 (7.09 - 7.35)	7.47 (7.34 - 7.60)	7.95 (7.82 - 8.09)
<b>Age groups</b>						
Less than 45 years	3.31 (3.11 - 3.50)	6.00 (5.74 - 6.26)	6.70 (6.43 - 6.98)	7.16 (6.88 - 7.44)	7.60 (7.31 - 7.89)	8.51 (8.20 - 8.81)
45 to <55 years	3.42 (3.23 - 3.60)	6.10 (5.86 - 6.35)	6.69 (6.44 - 6.95)	6.94 (6.68 - 7.20)	7.19 (6.93 - 7.45)	7.80 (7.53 - 8.08)
55 to <65 years	3.63 (3.44 - 3.82)	6.10 (5.86 - 6.35)	6.61 (6.36 - 6.86)	6.77 (6.52 - 7.03)	6.97 (6.72 - 7.23)	7.32 (7.06 - 7.59)
65 years and over	4.05 (3.87 - 4.23)	7.05 (6.82 - 7.29)	7.67 (7.43 - 7.91)	7.87 (7.62 - 8.11)	8.04 (7.79 - 8.29)	8.27 (8.02 - 8.52)
<b>Sex</b>						
Female	3.50 (3.37 - 3.63)	6.16 (5.98 - 6.33)	6.80 (6.62 - 6.99)	7.03 (6.85 - 7.22)	7.30 (7.11 - 7.48)	7.82 (7.62 - 8.01)
Male	3.76 (3.63 - 3.89)	6.56 (6.39 - 6.73)	7.12 (6.94 - 7.29)	7.39 (7.20 - 7.57)	7.63 (7.45 - 7.81)	8.08 (7.89 - 8.27)
<b>Ethnicity</b>						
White	3.87 (3.71 - 4.03)	6.46 (6.26 - 6.67)	7.06 (6.85 - 7.27)	7.24 (7.02 - 7.45)	7.43 (7.21 - 7.65)	7.78 (7.56 - 8.00)
South Asian	3.25 (3.10 - 3.40)	6.21 (6.01 - 6.42)	6.91 (6.70 - 7.13)	7.19 (6.97 - 7.41)	7.51 (7.29 - 7.74)	8.12 (7.89 - 8.35)
Black	3.92 (3.68 - 4.16)	6.49 (6.19 - 6.80)	6.97 (6.65 - 7.29)	7.27 (6.95 - 7.60)	7.49 (7.16 - 7.82)	8.04 (7.70 - 8.38)
Any other Asian	3.48 (3.09 - 3.87)	6.04 (5.54 - 6.55)	6.49 (5.97 - 7.01)	6.85 (6.31 - 7.39)	7.03 (6.49 - 7.57)	7.48 (6.92 - 8.03)
Other	4.07 (3.49 - 4.65)	6.45 (5.72 - 7.17)	6.92 (6.17 - 7.67)	7.43 (6.65 - 8.20)	7.83 (7.03 - 8.62)	8.38 (7.56 - 9.20)
Mixed	3.01 (2.26 - 3.77)	5.85 (4.81 - 6.89)	6.17 (5.10 - 7.24)	6.45 (5.36 - 7.55)	6.79 (5.68 - 7.91)	7.66 (6.48 - 8.85)
Chinese	3.79 (2.64 - 4.94)	7.09 (5.54 - 8.64)	7.54 (5.95 - 9.13)	7.81 (6.19 - 9.43)	8.20 (6.54 - 9.85)	8.06 (6.42 - 9.70)
Unknown	4.12 (3.29 - 4.95)	7.82 (6.70 - 8.94)	9.05 (7.85 - 10.24)	9.08 (7.88 - 10.28)	9.19 (7.99 - 10.40)	9.33 (8.11 - 10.54)

**Supplementary table 6. Semi-parametric multivariable Cox proportional hazards model for interval censored data. Hazard ratios (HR) are mutually adjusted for all factors shown in the table. HR greater than 1 imply greater hazards for vision-threatening diabetic retinopathy (DR). Bold p-values show statistically significant results.**

Characteristic	HR	95% CI	p-value
Age (per 5-year increase)	0.92	(0.91 - 0.93)	<b>7.5x10<sup>-129</sup></b>
<b>Age groups</b>			
<45 years	1.00		
45 to <55 years	0.80	(0.75 - 0.84)	<b>5.1x10<sup>-23</sup></b>
55 to <65 years	0.61	(0.56 - 0.66)	<b>9.7x10<sup>-82</sup></b>
65 years and over	0.56	(0.50 - 0.61)	<b>4.2x10<sup>-112</sup></b>
<b>Sex</b>			
Female	1.00		
Male	1.04	(1.00 - 1.07)	<b>0.028</b>
<b>Baseline DR grade</b>			
No retinopathy	1.00		
Retinopathy in both eyes	8.00	(7.96 - 8.05)	<b>3.5x10<sup>-2209</sup></b>
Retinopathy in one eye	3.07	(3.03 - 3.11)	<b>1.0x10<sup>-632</sup></b>
<b>Ethnicity</b>			
White	1.00		
South Asian	1.37	(1.33 - 1.41)	<b>1.9x10<sup>-51</sup></b>
Black	1.58	(1.53 - 1.63)	<b>9.1x10<sup>-76</sup></b>
Any other Asian	1.26	(1.18 - 1.34)	<b>1.4x10<sup>-09</sup></b>
Other	1.30	(1.2 - 1.39)	<b>1.2x10<sup>-07</sup></b>
Mixed	1.38	(1.23 - 1.53)	<b>1.9x10<sup>-05</sup></b>
Chinese	0.98	(0.75 - 1.22)	0.888
Unknown	1.38	(1.16 - 1.59)	<b>0.003</b>
<b>Duration of diabetes (per 5 years)</b>	1.15	(1.14 - 1.16)	<b>3.3x10<sup>-136</sup></b>
<b>Type of diabetes</b>			
Type 2	1.00		
Type 1	1.02	(0.94 - 1.11)	0.594
Other	0.71	(0.19 - 1.24)	0.198
Missing	1.25	(1.12 - 1.37)	<b>5.5x10<sup>-04</sup></b>
<b>IMD</b>			
1 (Most deprived)	1.00		
2	1.04	(0.98 - 1.10)	0.239
3	1.02	(0.96 - 1.08)	0.444
4	0.98	(0.92 - 1.05)	0.586
5 (least deprived)	0.93	(0.85 - 1.01)	0.064

<sup>†</sup>HR = Hazard Ratio, CI = Confidence Interval

**Supplementary table 7. Multivariable Cox proportional hazards model for right censored data with development of any diabetic retinopathy (DR) as outcome of interest. Hazard ratios (HR) are mutually adjusted for all factors shown in the table. HR greater than 1 imply greater hazards for DR. Bold p-values show statistically significant results.**

Characteristic	HR <sup>1</sup>	95% CI <sup>1</sup>	p-value
Age (per 5-year increase)	0.99	0.98, 0.99	<b>2.4x10<sup>-12</sup></b>
<b>Age categories</b>			
<45yr	1.00		
45 to <55yr	0.90	0.87, 0.93	<b>3.9x10<sup>-11</sup></b>
55 to <65yr	0.81	0.78, 0.84	<b>4.8x10<sup>-39</sup></b>
65yr and over	0.87	0.84, 0.90	<b>6.8x10<sup>-18</sup></b>
<b>Sex</b>			
Female	1.00		
Male	1.06	1.03, 1.08	<b>1.5x10<sup>-07</sup></b>
<b>Ethnicity</b>			
White	1.00		
South Asian	1.03	1.00, 1.06	<b>0.021</b>
Black	1.03	1.00, 1.06	0.070
Any other	0.96	0.92, 1.01	0.096
<b>Asian</b>			
Other	1.09	1.02, 1.16	<b>0.006</b>
Mixed	1.03	0.94, 1.13	0.550
Chinese	1.06	0.94, 1.20	0.318
Unknown	1.36	1.21, 1.54	<b>5.7x10<sup>-07</sup></b>
<b>Duration of diabetes (per 5-year increase)</b>	1.18	1.17, 1.19	<b>1.1x10<sup>-377</sup></b>
<b>Type of diabetes</b>			
Type 2	1.00		
Type 1	1.36	1.28, 1.44	<b>2.5x10<sup>-26</sup></b>
Other	1.01	0.77, 1.32	0.951
Missing	1.25	1.16, 1.35	<b>7.6x10<sup>-09</sup></b>
<b>Deprivation (IMD quintiles)</b>			
1	1.00		
2	0.99	0.96, 1.03	0.692
3	0.98	0.95, 1.02	0.338
4	0.98	0.94, 1.02	0.318
5	0.97	0.93, 1.01	0.152
Missing	1.78	1.05, 3.02	<b>0.032</b>

<sup>1</sup>HR = Hazard Ratio, CI = Confidence Interval