




BMJ Open Comparison of diagnoses of early-onset sepsis associated with use of Sepsis Risk Calculator versus NICE CG149: a prospective, population-wide cohort study in London, UK, 2020–2021

Chinthika Piyasena ¹, Sorana Galu,² Rie Yoshida,³ Devangi Thakkar,⁴ Joanna O'Sullivan,⁵ Catherine Longley,⁶ Katie Evans ⁷, Suzanne Sweeney,⁸ Giles Kendall,⁹ Khadija Ben-Sasi,¹⁰ Justin Richards,¹¹ Chris Harris,¹² Jenni Jagodzinski,⁸ Alicia Demirjian ^{1,13}, Theresa Lamagni,¹³ Kirsty Le Doare ¹⁴, Paul T Heath ¹⁴, Cheryl Battersby ¹⁵, Neonatal Trainee-Led Research and Improvement Projects (NeoTRIPs) group

To cite: Piyasena C, Galu S, Yoshida R, *et al.* Comparison of diagnoses of early-onset sepsis associated with use of Sepsis Risk Calculator versus NICE CG149: a prospective, population-wide cohort study in London, UK, 2020–2021. *BMJ Open* 2023;**13**:e072708. doi:10.1136/bmjopen-2023-072708

► Prepublication history and additional supplemental material for this paper are available online. To view these files, please visit the journal online (<http://dx.doi.org/10.1136/bmjopen-2023-072708>).

Received 13 February 2023
Accepted 10 July 2023



© Author(s) (or their employer(s)) 2023. Re-use permitted under CC BY-NC. No commercial re-use. See rights and permissions. Published by BMJ.

For numbered affiliations see end of article.

Correspondence to

Dr Cheryl Battersby;
c.battersby@imperial.ac.uk

ABSTRACT

Objective We sought to compare the incidence of early-onset sepsis (EOS) in infants ≥ 34 weeks' gestation identified >24 hours after birth, in hospitals using the Kaiser Permanente Sepsis Risk Calculator (SRC) with hospitals using the National Institute for Health and Care Excellence (NICE) guidance.

Design and setting Prospective observational population-wide cohort study involving all 26 hospitals with neonatal units colocated with maternity services across London (10 using SRC, 16 using NICE).

Participants All live births ≥ 34 weeks' gestation between September 2020 and August 2021.

Outcome measures EOS was defined as isolation of a bacterial pathogen in the blood or cerebrospinal fluid (CSF) culture from birth to 7 days of age. We evaluated the incidence of EOS identified by culture obtained >24 hours to 7 days after birth. We also evaluated the rate empiric antibiotics were commenced >24 hours to 7 days after birth, for a duration of ≥ 5 days, with negative blood or CSF cultures.

Results Of 99 683 live births, 42 952 (43%) were born in SRC hospitals and 56 731 (57%) in NICE hospitals. The overall incidence of EOS (<72 hours) was 0.64/1000 live births. The incidence of EOS identified >24 hours was 2.3/100 000 ($n=1$) for SRC vs 7.1/100 000 ($n=4$) for NICE (OR 0.5, 95% CI (0.1 to 2.7)). This corresponded to (1/20) 5% (SRC) vs (4/45) 8.9% (NICE) of EOS cases ($\chi^2=0.3$, $p=0.59$). Empiric antibiotics were commenced >24 hours to 7 days after birth in 4.4/1000 ($n=187$) for SRC vs 2.9/1000 ($n=158$) for NICE (OR 1.5, 95% CI (1.2 to 1.9)). 3111 (7%) infants received antibiotics in the first 24 hours in SRC hospitals vs 8428 (15%) in NICE hospitals.

Conclusion There was no significant difference in the incidence of EOS identified >24 hours after birth between SRC and NICE hospitals. SRC use was associated with 50% fewer infants receiving antibiotics in the first 24 hours of life.

STRENGTHS AND LIMITATIONS OF THIS STUDY

- ⇒ Largest UK study with 99 683 live births comparing neonatal outcomes following the Kaiser Permanente Sepsis Risk Calculator (SRC) versus National Institute for Health and Care Excellence guidance.
- ⇒ Prospective 1-year observational population-wide cohort study using a network approach to ensure capture of all readmissions following discharge due to early-onset neonatal sepsis.
- ⇒ Data were only obtained for infants who had a blood culture received in a laboratory, and therefore it is possible to have missed a few infants who received antibiotics without a blood culture.

INTRODUCTION

Early-onset sepsis (EOS) can be defined as bacteraemia occurring within 72 hours of birth. EOS occurs in around 0.7/1000 live births in high-income settings¹ and remains a major cause of morbidity in neonates, particularly those born preterm.² As infants can initially be asymptomatic or present with non-specific symptoms, determining who should receive antibiotics can be a challenge, and is a balance between unnecessary use of antibiotics and avoiding harm from delayed antibiotic therapy. In the UK, most hospitals follow the National Institute for Health and Care Excellence (NICE) guidance CG149, which uses maternal risk factors, clinical indicators and 'red flags'³ to guide decisions on investigations and antibiotics. However, concerns of associated antibiotic overuse⁴ have prompted an increasing number of hospitals to adopt

the Sepsis Risk Calculator (SRC)^{5,6} for infants ≥ 34 weeks' gestation and within 12 hours of birth.⁷

The SRC was developed in the USA and estimates the risk of EOS based on background incidence, gestational age, highest maternal antepartum temperature, duration of membrane rupture, maternal group B *Streptococcus* (GBS) status and type and timing of intrapartum antibiotics. The infant's evolving clinical presentation is factored into the second part of the model, which adjusts the prior risk of EOS. Depending on the estimated final risk, the SRC provides recommendations for clinical management (routine care/blood culture/empiric antibiotics) and monitoring of vital signs.^{7,8} The SRC was endorsed by the American Academy of Pediatrics in 2018.⁹ While the SRC reduces antibiotic usage,^{10–12} there have been concerns of the potential for missed or delayed identification of EOS compared with NICE.^{13,14} Despite this, the SARS-CoV-2 pandemic accelerated its uptake in the UK; 10 out of 26 hospitals in London adopted the SRC to ration resources and facilitate earlier discharges. In this 1-year prospective regional study, we aimed to report the incidence of EOS cases and compare the incidence at which it was identified >24 hours after birth in hospitals using SRC with hospitals using NICE guidance.

METHODS

Design

We applied a pragmatic study design, developed by a multiprofessional project team (comprising doctors, nurses, midwives and network managers), supported by the London Neonatal Operational Delivery Network. A common minimum data set was collected by a network of trainee and consultant paediatricians in the Neonatal Trainee Research and Improvement Projects (NeoTRIPS). The protocol is published on the NeoTRIPS website.¹⁵

Setting

All 26 National Health Service (NHS) hospitals within Greater London providing newborn care and collocated with a maternity service participated in this study. These included 9 tertiary neonatal intensive care units, 13 local neonatal units and 4 special care baby units. In total, 10 hospitals followed SRC and 16 followed NICE guidance. The decision regarding which approach to follow (SRC/NICE) was made by individual hospitals and was not influenced by participation in this study.

The background incidence of EOS used by the SRC hospitals during the study period ranged from 0.6/1000 to 1/1000. There was variation in the application of SRC; in 9/10 units, it was applied only to subsets of infants meeting specified risk thresholds, and there were differences in the management of

infants deemed to be at intermediate risk (online supplemental table 1).

Participants

The eligible population was all live births ≥ 34 weeks' gestation during a 12-month period from 1 September 2020 to 31 August 2021.

Main outcomes

The primary outcome was the number of cases of EOS identified >24 hours to 7 days of age, as a proportion of live births. EOS was defined as isolation of a bacterial pathogen in the blood or cerebrospinal fluid (CSF) culture of an infant from 24 hours of age (up to 7 days of age). Bacterial pathogens were categorised as per the *Vermont Oxford Network Manual of Operations*.¹⁶ The number of infants commenced empiric antibiotics in the first 24 hours and the number of infants with EOS in the first 72 hours were also assessed. We also evaluated the rate at which empiric antibiotics were commenced >24 hours up to 7 days of age, for a duration of ≥ 5 days, with negative blood or CSF cultures.

Data collection

The number of all live births ≥ 34 weeks' gestation per calendar month at each hospital site was obtained for the duration of the study. Patient-level data were collected for all infants who had a blood culture obtained during the first 7 postnatal days (figure 1). These infants were identified by reviewing weekly lists of blood cultures from all microbiology laboratories serving these hospitals to ensure all screens for suspected EOS were captured from all settings (postnatal ward, neonatal unit, accident and emergency department). If an infant had more than one blood culture, the timing of the first sample was used.

For each infant who had a blood culture taken, a basic data set was obtained: time of blood culture (hours of age), receipt of antibiotics and time of administration, admission to a neonatal unit, duration of antibiotics, length of initial hospital stay.

For all EOS cases, additional maternal and infant clinical details were collected (figure 1): gestational age, birth weight, sex, mode of delivery, maternal risk factors (length of rupture of membrane, highest maternal antepartum temperature, GBS status in the current pregnancy, class and timing of intrapartum antibiotics), organisms isolated (blood culture, CSF or both), CSF white cell count, infant's clinical signs during initial hospital stay, whether the infant presented after discharge home, infant's symptoms on readmission from home, duration of antibiotics and final clinical outcome. In addition, for SRC hospitals, we collected EOS scores at birth and after clinical examination. We did not collect detailed data for infants with culture-negative sepsis who were treated with antibiotics in the first 24 hours after birth.

Data for readmissions to hospitals other than the birth hospital were obtained through nhs.net correspondence. The NeoTRIPS network covered all London hospitals and

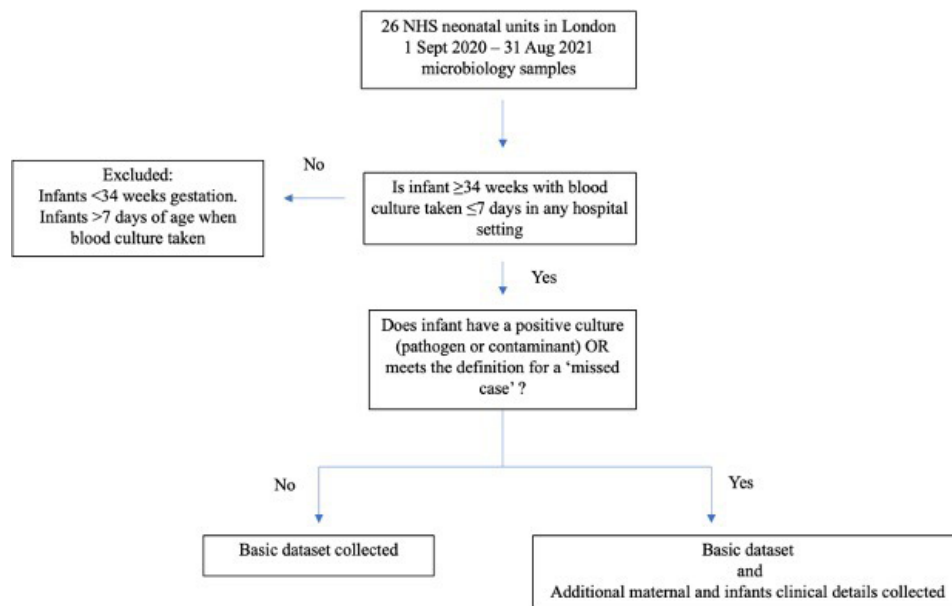


Figure 1 Flowchart of methods. NHS, National Health Service.

frequent communications between members ensured that missing data were minimised.

Anonymised data were collated using Excel through nhs.net, stored on NHS computers and analysed using a centralised Excel spreadsheet through a secure nhs.net server. Monthly data were verified with contributors by three of the authors. Missing data were resolved as far as possible. Cases meeting the definition of EOS were agreed by consensus. Compliance with data submission was supported through feedback at regular meetings throughout the study period. See [figure 1](#), flowchart of methods.

Expected incidence of EOS identified >24 hours after birth

The objective of this pragmatic study was to report the incidence of EOS identified >24 hours after birth to 7 days of age from all London hospitals over a 12-month period. Based on NHS Maternity Statistics,¹⁷ estimated ~95 000 live births at ≥34 weeks' gestation would be born during the study period. With a background EOS incidence of 0.8/1000 live births for Greater London,¹⁸ we anticipated ~80 cases of EOS and, based on the estimate defined in the original Kaiser Permanente study,¹⁰ we anticipated 5–6 EOS cases identified >24 hours after birth to 7 days.

Statistical analysis

Summary descriptive statistics are presented as medians with their corresponding IQRs for continuous variables and as percentages for categorical variables. All incidence rates are expressed as cases per 1000 or 100 000 live births ≥34 weeks' gestation, where appropriate, with denominator values based on available data.

Chi-squared tests were used for proportions, independent samples t-test for comparison of means and Mann-Whitney U test for comparisons of medians. Non-parametric data were log transformed to preferentially conduct parametric testing where possible. Shapiro-Wilk

test was used for assessing normality of original and log-transformed data. GraphPad Prism was used for analyses. P values <0.05 were considered statistically significant. OR was chosen for events where the incidence was <10%.¹⁹

Patient and public involvement

None.

RESULTS

Blood culture data were not available for all months from all hospitals over the study period. Data were missing for 5 months from one SRC hospital and for 32 months from seven NICE hospitals. The live birth denominator corresponding with available data was 42 952 for SRC hospitals and 56 731 for NICE hospitals ([table 1](#)). Online supplemental tables 2 and 3 present the live birth denominator data by month for SRC and NICE hospitals.

Blood culture screening and intravenous antibiotic use

Overall, 11 734 (12%) infants had a blood culture taken within 24 hours of birth; however, SRC hospitals obtained 50% fewer blood cultures than NICE hospitals (relative risk 0.5, 95% CI (0.47 to 0.51)) ([table 1](#)). In both SRC and NICE hospitals, the majority of infants having a blood culture were treated with antibiotics ([table 1](#)). Hospital-specific antibiotic use is presented in online supplemental tables 1 and 2. The proportions of infants receiving antibiotics at >24 to ≤72 hours and >72 hours to ≤7 days were similar in both hospital types (OR: 1.1, 95% CI (0.97 to 1.2) vs 1.0, 95% CI (0.81 to 1.3)) with no shift towards later therapy in hospitals using SRC ([table 1](#)).

Incidence and characteristics of cases of EOS

Across the entire study population, there were 65 infants with EOS within the first 7 days, 64 within 72 hours (0.64/1000, 95% CI (0.5 to 0.82)) and 1 infant

**Table 1** Outcomes of the participating hospitals

	SRC 10 hospitals	NICE 16 hospitals
Live births denominator corresponding to available data	42 952	56 731
Infants screened with blood culture \leq 24 hours of age, n (%)	3297 (7.7)	8437 (15)
Infants who started antibiotics \leq 24 hours of age, n (%)*	3111 (7.2)	8428 (15)
Infants who started antibiotics $>$ 24 hours and \leq 72 hours of age, n (%)*	510 (1.3)	620 (1.3)
Infants who started antibiotics $>$ 72 hours and \leq 7 days of age, n (%)*	135 (0.3)	176 (0.4)
EOS \leq 7 days of age, n, incidence/1000 live births, (95% CI)	20 (0.47/1000, (0.3 to 0.72))	45 (0.79/1000, (0.6 to 1.1))
EOS identified $>$ 24 hours and \leq 7 days, n (incidence/100 000 live births (95% CI))	1 (2.3/100 000, (0.3 to 16))	4 (7.1/100 000, (2.7 to 19))
Negative blood culture and started antibiotics $>$ 24 hours and \leq 7 days for at least 5 days duration, n (incidence/1000 live births, (95% CI))	187 (4.4/1000, (3.8 to 5))	158 (2.8/1000, (2.4 to 3.3))

All live births denote \geq 34 weeks' gestation.

*Timing of antibiotic administration was unavailable for 15 infants (SRC) and 2 infants (NICE).

EOS, early-onset sepsis; NICE, National Institute for Health and Care Excellence; SRC, Sepsis Risk Calculator.

from $>$ 72 hours to 7 days. The most common pathogen was GBS (0.44/1000). The incidence of *Escherichia coli* was 0.07/1000, and the incidence of other pathogens combined was 0.16/1000 (online supplemental table 4).

There was a higher number of EOS cases within the first 7 days in NICE hospitals (n=45; 0.79/1000) compared with SRC hospitals (n=20; 0.47/1000) (OR 1.7, 95% CI (1.0 to 2.8)) (table 1). Table 2 shows the clinical characteristics for infants with EOS. Cases in the SRC hospitals were more likely to be symptomatic at time of treatment (10 (53%) vs 11 (26%)). However, the timings of blood culture and initiation of antibiotics across the two groups were similar.

Incidence of EOS identified $>$ 24 hours from birth

There were 5 cases of EOS identified by culture $>$ 24 hours to 7 days (n=1, 2.3/100 000 for SRC vs n=4, 7.1/100 000 for NICE) (table 1). Owing to the difference in background incidence of EOS, the proportions of cases were compared; (1/20) 5% (SRC) versus (4/45) 8.9% (NICE) ($\chi=0.3$, p=0.59). The maternal and infant characteristics are reported in online supplemental table 5. One infant was born at a NICE hospital, had congenital hydronephrosis and was admitted to the neonatal unit directly. Three infants were readmissions from home following an initial asymptomatic course in hospital (all NICE). One infant developed symptoms while being observed on the postnatal ward (SRC). Detailed case histories are provided in online supplemental file 1. Two infants were excluded because of congenital anomalies predisposing to reduced skin integrity and the pathogenesis of invasive infection was probably postnatal rather than that of EOS. These were *Bacillus cereus* and *Acinetobacter baumannii* isolated at 28 hours in an infant with harlequin ichthyosis (SRC) and *Staphylococcus aureus* isolated at 91 hours in a collodion infant (NICE).

Rate of commencing empiric antibiotics $>$ 24 hours after birth for \geq 5 days, with negative cultures

There were 345 infants who were commenced empiric antibiotics $>$ 24 hours after birth for \geq 5 days with negative cultures (187, 440/100 000 for SRC vs 158, 290/100 000 for NICE (OR 1.5, 95% CI (1.2 to 1.9)) (table 1). The maternal and infant characteristics are presented in online supplemental table 6. There were differences in maternal characteristics: length of rupture of membranes (limited interpretation due to missing data), GBS status and antibiotic therapy. Despite more cases in the SRC hospitals, there was no greater proportion of infants admitted to the neonatal unit from the postnatal ward or readmitted from home. Timing and duration of antibiotics were similar. There were no deaths in either group.

DISCUSSION

This large observational, pragmatic study was undertaken to assess and compare the outcomes of the routine use of two widely adopted neonatal sepsis management strategies, the SRC and NICE neonatal infection guideline. Decisions regarding which strategy to use were undertaken locally and therefore reflect a range of local factors, including perceived benefits and risks, caseloads and risk factors.

We found a high proportion of infants born at \geq 34 weeks' gestation who received antibiotics within 24 hours of birth—15% in NICE hospitals vs 7% in the SRC hospitals. This implies that 50% fewer infants received empiric antibiotics in the SRC hospitals. Despite this, there was no evidence of a resultant increase in identification of EOS beyond 24 hours after birth. Indeed, the absolute number of infants meeting this definition of later identification was small. Of the five such cases, only three were

Table 2 Characteristics of 65 cases of EOS ≤ 7 days

	SRC (n=20)	NICE (n=45)	P value
Gestational age, weeks, mean (SD)	38.9 (1.7)	40.1 (7.4)	0.43
Birth weight, g, mean (SD)	3156 (562)	3255 (436)	0.45
Male, n (%)	8 (40)	24 (53)	0.33
Vaginal delivery, n (%)	4 (20)	25 (56)	0.008
Highest maternal antepartum temperature, median (IQR)*	37.6 (36.9–38.3)	37.3 (36.8–37.6)	0.32
Maternal GBS status, n (%)†			
Unknown	9 (47)	15 (35)	0.38
Positive	3 (16)	17 (40)	0.07
Negative	7 (37)	11 (26)	0.39
Rupture of membranes, hours, median (IQR)‡	12 (8.3–24)	16 (2.8–32)	0.28
Maternal antibiotics, n (%)§			
No antibiotics or any <2 hours prior to birth	16 (84)	30 (75)	0.44
GBS-specific antibiotics >2 hours prior to birth	0	3 (7.5)	0.22
Broad spectrum antibiotics 2–3.9 hours prior to birth	3 (16)	4 (10)	0.51
Broad spectrum antibiotics >4 hours prior to birth	0	3 (7.5)	0.22
Initial hospital stay			
Assigned postnatal care and never admitted to neonatal unit, n (%)	7 (35)	24 (53)	0.18
Assigned postnatal care and later admitted to neonatal unit, n (%)	5 (25)	11 (24)	0.93
Admitted to neonatal unit from birth centre, n (%)	8 (40)	11 (24)	0.19
Age at blood culture, hours, median (IQR)	3.7 (2.1–9.2)	2.6 (1.5–8.9)	0.45
Age at antibiotics, hours, median (IQR)	3.7 (2.5–9.2)	2.6 (1.5–8.7)	0.76
Clinical signs at birth, n (%)¶	10 (53)	11 (26)	0.04
Developed signs before discharge, n (%)¶	6 (32)	14 (33)	0.94
Never had clinical signs, n (%)	3 (16)	17 (40)	0.07
CSF culture positive, n (%)**	1 (5)	2 (4.7)	0.96
CSF white cell count >20, n (%)**	1 (5)	3 (7)	0.76
Death, n (%)	0	1 (2.2)	0.50
EOS Score at birth, median (IQR)	2.0 (0.14–7.8)	–	–

*Highest maternal antepartum temperature missing for SRC 4, NICE 25 infants.

†Maternal GBS status missing for SRC 1, NICE 2 infants.

‡Rupture of membrane timing missing for SRC 4, NICE 16 infants.

§Maternal antibiotics missing for SRC 1, NICE 5 infants.

¶Timing of clinical signs missing for SRC 1, NICE 3 infants.

**CSF not obtained for SRC 1, NICE 3 infants.

CSF, cerebrospinal fluid; EOS, early-onset sepsis; GBS, group B *Streptococcus*; IQR, Interquartile range; NICE, National Institute for Health and Care Excellence; SD, Standard deviation; SRC, Sepsis Risk Calculator.

readmissions in the first 7 days following an asymptomatic course during the initial hospital stay. These three infants had been cared for in hospitals following NICE. Readmission with bacteraemia, even across a population representing almost 100 000 live births, is therefore a rare event. The rarity is also reflected in other large studies following implementation of SRC: 3 cases across 56 261 live births (5.3/100 000) in Northern California¹⁰ and 2 cases across 24 749 live births (8.1/100 000) in Wales.⁶ All infants in these two studies were also asymptomatic during the initial postnatal stay and without clinical

indicators for empiric antibiotics.^{6 10} This indicates that neither approach will prevent all such cases.

The proportion of infants receiving antibiotics ≤ 24 hours of age in SRC hospitals in our study is still higher than that reported at Kaiser Permanente hospitals (2.6%)¹⁰ and other SRC centres in the USA (3.7%).²⁰ These centres reported on cohorts of infants born ≥ 35 and ≥ 36 weeks' gestation, respectively, where our cohort included ≥ 34 weeks' gestation with overall higher incidence of infection. Nevertheless, contributions to higher antibiotic use may be explained by the more conservative SRC approach



generally adopted by UK hospitals, in which antibiotics are always started when obtaining a blood culture (online supplemental table 1). Withholding antibiotics is one of the possible SRC recommendations for infants at intermediate risk. A Welsh study showed a similar reduction in antibiotic use to our study (45.5%), with SRC use resulting in 7.7% receiving antibiotics.⁶ Another reason for the higher proportion treated with antibiotics in our study may be that the SRC was applied only to infants cared for on the postnatal ward, as opposed to those admitted to the neonatal unit. Almost all hospitals implemented a variation of the SRC with differences across hospitals (online supplemental table 1). The high use of antibiotics in the hospitals in our study is highlighted further by an international study in high-income settings (with centres following a variety of approaches in managing risk of EOS) which reported that only 3% of infants were treated.²¹ It is therefore clear that in our setting large numbers of infants are being exposed to antibiotics relative to the low incidence of EOS.

Although the overall incidence of EOS (0.64/1000 live births ≥ 34 weeks gestation) is similar to that identified in other UK studies,²² as an observational pragmatic study there are inherent limitations in our ability to interpret the differences we found in outcomes between different hospitals. For example, differences in socioeconomic and ethnic backgrounds of the populations served and of obstetric practice regarding caesarean section rates and intrapartum antibiotic prophylaxis use may have a significant impact on the background risk of EOS.^{23 24} The difference in the number of EOS identified by culture >24 hours after birth in the groups (SRC=1, NICE=4) is small but could reflect the fact that fewer blood cultures were taken in the SRC hospitals meaning that some infants with transient bacteraemia²⁵ and minimal clinical signs were not captured; this has also been reported by the Kaiser Permanente group where the practice of taking a blood culture and awaiting the result is more common.¹⁰

The SRC was developed and validated using EOS confirmed by positive blood cultures.^{7 8} Because infants can present with signs of sepsis with sterile blood or CSF cultures, we reported an additional 345 infants who commenced ≥ 5 days of intravenous antibiotics after 24 hours of age with negative cultures. The rate at which this occurred was significantly higher in SRC units than in NICE units. Caution must be exercised when considering a definition of presumed sepsis that includes duration of antibiotic therapy, as this may be influenced by a clinician decision to extend treatment following negative cultures, rather than by clinical indicators. Despite its limitations, a definition of five or more days of antibiotic therapy is used elsewhere.^{1 16} In the setting of a non-randomised study design, it is also possible that clinicians in SRC hospitals were more cautious following implementation of the SRC. However, there was no skew towards later antibiotic treatment suggesting delayed recognition or later manifestation of sepsis associated with the tool. Additionally, there were no increased

adverse outcomes such as neonatal unit admission, readmissions following discharge home or death. Whether later antibiotic therapy for presumed sepsis is associated with later sequelae, such as neurodevelopmental impairment, is not clear.²⁶

A key strength of the study was the support provided by the network of London hospitals embarking on implementation of new practice, feedback at regular intervals and crucially, the trainee network to capture all readmissions with presumed sepsis. This is the largest study of the outcomes of the SRC in the UK to date, with data representing 90% of the eligible birth population, and all hospitals in the network providing maternity care contributing data. Thus, the results are generalisable to the wider population.

There are a number of potential limitations to consider: (1) This was a non-randomised study, and therefore we cannot exclude differences in populations and clinical practices at hospitals that may explain (for example) the higher rate of empiric antibiotic therapy in the context of negative cultures in SRC hospitals. (2) This was a pragmatic design with the capacity to obtain only a limited data set. Broad coverage to capture rare events (identification >24 hours after birth) was prioritised over depth of clinical detail. We therefore did not collect laboratory data such as C reactive protein levels. Data were only obtained for infants who had a blood culture received in a laboratory, and therefore it is possible to have missed a few infants who received antibiotics without a blood culture. There was also variation in the application of the SRC across hospitals, with a modified approach used commonly (online supplemental table 1). Equally, without data on every eligible live birth, uniformity of application of NICE guidance cannot be assessed. (3) We sought to determine the rate at which infants received ≥ 5 days of antibiotics commenced >24 hours after birth in the context of negative cultures. Infants that died before the intention to complete ≥ 5 days would not have been captured. (4) Not all hospitals provided data for the entire study period, therefore we cannot assure all readmissions following initial hospital discharge were captured. The possibility of readmission to a hospital outwith Greater London remains, but this is likely to be rare. (5) The SRC was compared with NICE CG149,³ which has since been replaced in 2021 by NICE CG195²⁷ with the removal of maternal broad spectrum antibiotics as a risk factor for neonatal EOS, and previous GBS colonisation mandating intrapartum antibiotic prophylaxis for the subsequent pregnancy, unless the woman has had a negative test in that subsequent pregnancy.²⁷ These new changes may bring about a reduction in neonatal antibiotic exposure and some of the cases identified later observed in our study may have been avoided.

We propose that there is now a need to conduct a UK-wide randomised controlled trial to compare these two strategies. Findings from our study will help inform the design of such a study.

CONCLUSION

The use of the SRC was associated with 50% fewer infants receiving empiric antibiotics compared with NICE CG149. EOS identified by culture >24 hours after birth was rare, with no difference between the two groups. These findings can help inform clinical guidelines as well as the design of definitive studies to compare outcomes of the SRC with NICE CG195 introduced in 2021.²⁷

Author affiliations

- ¹Evelina London Children's Hospital, London, UK
- ²Homerton University Hospital NHS Foundation Trust, London, UK
- ³Imperial College Healthcare NHS Trust, London, UK
- ⁴The Hillingdon University Hospitals NHS Foundation Trust, Harrow, UK
- ⁵Kingston Hospital NHS Foundation Trust, Kingston upon Thames, UK
- ⁶Barts Health NHS Trust, London, UK
- ⁷Chelsea and Westminster Hospital NHS Foundation Trust, London, UK
- ⁸London Neonatal Operational Delivery Network, London, UK
- ⁹University College London Hospitals NHS Foundation Trust, London, UK
- ¹⁰London North West University Healthcare NHS Trust, Harrow, UK
- ¹¹Neonatology, St George's Hospital, London, UK
- ¹²King's College Hospital NHS Foundation Trust, London, UK
- ¹³United Kingdom Health Security Agency, London, UK
- ¹⁴Centre for Neonatal and Paediatric Infection, St George's University of London, London, UK
- ¹⁵Neonatal Medicine, School of Public Health, Imperial College London Faculty of Medicine, London, UK

Twitter Chinthika Piyasena @ChinthikaP, Joanna O'Sullivan @Jo_OSullivan, Katie Evans @KatieE1066, Alicia Demirjian @aliciad3 and Cheryl Battersby @DrCBattersby

Acknowledgements We thank Zeshan Rawn (London Neonatal Operational Delivery Network) for technical assistance and Katie Nichol (NHS England and NHS Improvement London).

Collaborators NeoTRIPs team: Sara Abdulla, Remon Agaibi, Elmunzir Ahmed, Luvena Anthony, Luana Ayres da Silva, Nauman Balghari, Archana Bansal, Sunanda Bhatia, Alexandra Briscoe, Andrew Chapman, Chloe Ann Cheang, Sabina Checketts, Jagadish Chintapalli, Li Yan Chow, Jonathan Cookson, Daniel Crane, Lucy Crossman, Angela de Cunto, Andrew DeSilva, Stacey De Atougia, Catherine Douch, Eleanor Duckworth, Nilmi Ekanayake, Ramyia Elangovan, Mariam Elbakry, Sara Farhat Dominguez, Lauren Ferretti, Joana Freitas, Mariana Gaspar Fonseca, Rebecca Gaunt, Adeoya Gbemiga Olabamiji, Daniel Geer, Kazim Ghafoor, Nicola Glogowski, Andrea Gronska, Jennifer Ho, Nichola Hodges, Lukas Huhn, Sarah May Johnson, Ola Joseph, Keisha Kamalanathan, Jessica Kimpton, Niamh Langasco, George Lawson, Rosalie Lear, Yinru Lim, Natasha Liow, Rita Marciano, Ramnik Mathur, Maria Mendoza, Clare Middleton, Nichola Monks, Amanda Moules, Evangelia Myttraki, Rajvi Nagrecha, Harshini Naidu, Helen Nightingale, Noor Nusair, Chisaraokwu Nwachukwu, Felicity Ockelford, Chinese Okorowo, Yujing Ooi, Evgenia Panagiotopoulou, Neaha Patel, Ayesha Rahim, Saranya Ravindran, Reshmi Raychaudhuri, Matthew Rubens, Kate Ryan, Keya Sahay, Nadia Saleem, Miriam Sanderson, Shivani Shah, Mashal Shamsuddin, Ana Silva Ferreira, Srikanth Sivakanthan, Helen Smith, Sarah Sturrock, Justinas Teiserskas, Devika Thakur, Sara Tho-Calvi, Naomi Tobi, Stephanie Tolan, Erica Twum-Barimah, Madduka Umeh, Benjamin Ummat, Rebecca Unwin, Aarti Verma, Amit Verma, Hannah Walker, Rebecca Wesson, Adelene Wong, Zijian (Chris) Zhang. Multi-professional project team: Mohammad Alam, Juliet Banya, Tristan Bate, Eleanor Bond, Clare Cane, Rina Chotai, Hayley Clements, Julia Croft, Shu-ling Chuang, Ambalika Das, Alka Desai, Simon Drysdale, Ramyia Elangovan, Elizabeth Eyre, Lydia Eze, Igor Fierens, Jonathan Filkin, Laura Govender, Sophie Griffiths, Michela Groppo, Cassandra Gyamtso, John Ho, Lukas Huhn, Eleanor Hulse, Gopinathannair Harikumar, Zainab Kassim, Christina Kortsalioudaki, Linda Machakaire, Joselyn Morris, Richard Nicholl, Ozioma Obi, Anne Opute, Siddhartha Paliwal, Nandiran Ratnavel, Divyen Shah, Neha Sharma, Ruth Shephard, Amisha Singh, Cheentan Singh, Sonia Spathis, Maria Symeonaki, Uma Sriramhatla, Caroline Sullivan, Sophia Teoh, Lidia Tyszczyk, Mercy Ughwujabo, Catherine Warrick, Kirsty Watts, Louis Yee, Jenny Ziprin.

Contributors CP wrote the first draft of the article with contributions from CB. CP, SG and RY carried out the analyses. All authors edited and approved the final version of the article. CP and CB conceived the study. CP, CB, GK, KB-S, JR, CH,

JJ, AD, TL, PTH, KLD and SS contributed to the development and conduct of the study. CP, SG, RY, JO, DT, CL and KE were involved in data collection, along with the NeoTRIPs team, and supported by the wider multi-professional project team group. CB as guarantor accepts full responsibility for the conduct of the study and controlled the decision to publish.

Funding Funding was received from the London Operational Delivery Network to support CP and DT. All authors had the final responsibility to submit for publication.

Competing interests CB reports grants and personal awards funded by the National Institute for Health Research, personal fees from Chiesi Pharmaceuticals and AbbVie Pharmaceuticals and is deputy chair of the NIHR Health Technology Assessment Prioritisation Committee for hospital-based care. PTH was a member of NICE CG149 guideline committee and deputy chair of NICE CG195 guideline committee. The other authors do not have any conflicts of interests to declare.

Patient and public involvement Patients and/or the public were not involved in the design, or conduct, or reporting, or dissemination plans of this research.

Patient consent for publication Not applicable.

Ethics approval The present cohort study was based on anonymised data collected as part of a service evaluation. The study was deemed to be a service evaluation by the chair and approvals officer of the London South East REC Committee and did not require ethical approval or participant consent.

Provenance and peer review Not commissioned; externally peer reviewed.

Data availability statement All data relevant to the study are included in the article or uploaded as an online supplemental information. The data that support the findings of this study are available from the corresponding author CB, upon reasonable request.

Supplemental material This content has been supplied by the author(s). It has not been vetted by BMJ Publishing Group Limited (BMJ) and may not have been peer-reviewed. Any opinions or recommendations discussed are solely those of the author(s) and are not endorsed by BMJ. BMJ disclaims all liability and responsibility arising from any reliance placed on the content. Where the content includes any translated material, BMJ does not warrant the accuracy and reliability of the translations (including but not limited to local regulations, clinical guidelines, terminology, drug names and drug dosages), and is not responsible for any error and/or omissions arising from translation and adaptation or otherwise.

Open access This is an open access article distributed in accordance with the Creative Commons Attribution Non Commercial (CC BY-NC 4.0) license, which permits others to distribute, remix, adapt, build upon this work non-commercially, and license their derivative works on different terms, provided the original work is properly cited, appropriate credit is given, any changes made indicated, and the use is non-commercial. See: <http://creativecommons.org/licenses/by-nc/4.0/>.

ORCID iDs

Chinthika Piyasena <http://orcid.org/0000-0001-6286-0629>
 Katie Evans <http://orcid.org/0000-0002-0503-9807>
 Alicia Demirjian <http://orcid.org/0000-0001-9395-533X>
 Kirsty Le Doare <http://orcid.org/0000-0002-5104-085X>
 Paul T Heath <http://orcid.org/0000-0002-7540-7433>
 Cheryl Battersby <http://orcid.org/0000-0002-2898-553X>

REFERENCES

- 1 Cailles B, Kortsalioudaki C, Buttery J, *et al*. Epidemiology of UK neonatal infections: the neonIN infection surveillance network. *Arch Dis Child Fetal Neonatal Ed* 2018;103:F547–53.
- 2 Stoll BJ, Hansen NI, Sánchez PJ, *et al*. Early onset neonatal sepsis: the burden of group B Streptococcal and E. coli disease continues. *Pediatrics* 2011;127:817–26.
- 3 Neonatal infection (early onset): antibiotics for prevention and treatment | guidance | NICE. NICE; 2012. Available: <https://www.nice.org.uk/guidance/cg149>
- 4 Mukherjee A, Davidson L, Anguava L, *et al*. NICE neonatal early onset sepsis guidance: greater consistency, but more investigations, and greater length of stay. *Arch Dis Child Fetal Neonatal Ed* 2015;100:F248–9.
- 5 Eason J, Ward H, Danko O, *et al*. Early-onset sepsis: can we screen fewer babies safely? *Arch Dis Child* 2021;106:86–8.
- 6 Goel N, Cannell S, Davies G, *et al*. Implementation of an adapted sepsis risk Calculator algorithm to reduce antibiotic usage in the management of early onset neonatal sepsis: a Multicentre initiative in Wales, UK. *Arch Dis Child Fetal Neonatal Ed* 2022;107:303–10.



- 7 Escobar GJ, Puopolo KM, Wi S, *et al.* Stratification of risk of early-onset sepsis in newborns ≥ 34 weeks' gestation. *Pediatrics* 2014;133:30–6.
- 8 Puopolo KM, Draper D, Wi S, *et al.* Estimating the probability of neonatal early-onset infection on the basis of maternal risk factors. *Pediatrics* 2011;128:e1155–63.
- 9 Puopolo KM, Benitz WE, Zaoutis TE, *et al.* Management of neonates born at ≥ 35 0/7 weeks' gestation with suspected or proven early-onset bacterial sepsis. *Pediatrics* 2018;142:e20182896.
- 10 Kuzniewicz MW, Puopolo KM, Fischer A, *et al.* A quantitative, risk-based approach to the management of neonatal early-onset sepsis. *JAMA Pediatr* 2017;171:365–71.
- 11 Achten NB, Klingenberg C, Benitz WE, *et al.* Association of use of the neonatal early-onset sepsis Calculator with reduction in antibiotic therapy and safety. *JAMA Pediatr* 2019;173:1032–40.
- 12 Moore HL, Battersby C, Piyasena C, *et al.* Assessing variation in neonatal sepsis screening across England. *Arch Dis Child Fetal Neonatal Ed* 2023;108:430–1.
- 13 Pettinger KJ, Mayers K, McKechnie L, *et al.* Sensitivity of the Kaiser Permanente early-onset sepsis Calculator: A systematic review and meta-analysis. *EClinicalMedicine* 2020;19:100227.
- 14 Snoek L, van Kassel MN, Krommenhoek JF, *et al.* Neonatal early-onset infections: comparing the sensitivity of the neonatal early-onset sepsis Calculator to the Dutch and the updated NICE guidelines in an observational cohort of culture-positive cases. *EClinicalMedicine* 2022;44:101270.
- 15 Pan-London early-onset sepsis observational study. 2020. Available: <https://neotrips.org/wp-content/uploads/2022/04/studyprotocol2.pdf> [Accessed 6 Oct 2020].
- 16 Vermont Oxford Network. 2021 *Manual of Operations: Part 2*. 2021. Available: <https://vtoxford.zendesk.com/hc/en-us/articles/360056768093-2021-Manual-of-Operations-Part-2-Release-25-0-PDF> [accessed 2 Apr 2023].
- 17 NHS maternity statistics, England 2018–19 [PAS] - NHS Digital. Available: <https://digital.nhs.uk/data-and-information/publications/statistical/nhs-maternity-statistics/2018-19> [Accessed 31 Oct 2019].
- 18 Kimpton JA, Verma A, Thakkar D, *et al.* Comparison of NICE guideline Cg149 and the sepsis risk Calculator for the management of early-onset sepsis on the postnatal ward. *Neonatology* 2021;118:562–8.
- 19 Sedgwick P. Relative risks versus odds ratios. *BMJ* 2014;348:g1407.
- 20 Dhudasia MB, Mukhopadhyay S, Puopolo KM. Implementation of the sepsis risk Calculator at an academic birth hospital. *Hosp Pediatr* 2018;8:243–50.
- 21 Giannoni E, Dimopoulou V, Klingenberg C, *et al.* Analysis of antibiotic exposure and early-onset neonatal sepsis in Europe, North America, and Australia. *JAMA Netw Open* 2022;5:e2243691.
- 22 Morris R, Jones S, Banerjee S, *et al.* Comparison of the management recommendations of the Kaiser Permanente neonatal early-onset sepsis risk Calculator (SRC) with NICE guideline Cg149 in infants ≥ 34 weeks. *Arch Dis Child Fetal Neonatal Ed* 2020;105:581–6.
- 23 Gopal Rao G, Townsend J, Stevenson D, *et al.* Early-onset group B *Streptococcus* (EOGBS) infection subsequent to cessation of screening-based Intrapartum prophylaxis: findings of an observational study in West London, UK. *BMJ Open* 2017;7:e018795.
- 24 Collin SM, Demirjian A, Swann C, *et al.* Race and Ethnicity in neonatal group B *Streptococcal* disease in England: 2016–2020. *Pediatrics* 2022;150:e2021056080.
- 25 Jaffe DM. Occult bacteremia in children. *Adv Pediatr Infect Dis* 1994;9:237–60.
- 26 Mukhopadhyay S, Puopolo KM, Hansen NI, *et al.* Neurodevelopmental outcomes following neonatal late-onset sepsis and blood culture-negative conditions. *Arch Dis Child Fetal Neonatal Ed* 2021;106:467–73.
- 27 NICE. Neonatal infection: antibiotics for prevention and treatment [NG195]. 2021. Available: <https://www.nice.org.uk/guidance/ng195> [Accessed 20 Apr 2021].

Supplementary material

Contents

Supplementary table 1. Key variations in the implementation of the SRC across hospitals.....	2
Supplementary table 2. Data for the hospitals following SRC.....	3
Supplementary table 3. Data for the hospitals following NICE.	4
Supplementary table 4. Distribution and incidence of organisms isolated.	5
Supplementary table 5. Maternal and infant characteristics of 5 cases of EOS identified >24 hours after birth.....	6
Supplementary file 1. Detailed case histories of cases of EOS identified >24 hours after birth. ...	7
Supplementary table 6. Maternal and infant characteristics of 345 cases where antibiotics were commenced >24 hours from birth, for ≥ 5 days, with negative cultures	8

Supplementary table 1. Key variations in the implementation of the SRC across hospitals.

Hospital	Groups of infants (all eligible infants versus infants with risk factors as per NICE) (postnatal versus postnatal and neonatal unit)	Management for infants at intermediate risk	Background incidence used during the study period
1	All eligible Postnatal ward only	Take blood culture and give antibiotics	0-8/1000
2	All eligible Postnatal ward and neonatal unit	Take blood culture, withhold antibiotics, no additional tests (FBC, CRP) and observations. Antibiotics if clinical signs or blood culture is positive.	1/1000 (Sep 2020 – Nov 2020) 0-8/1000 (from Dec 2020)
3	Infants with risk factors and meeting NICE criteria for antibiotics	Take blood culture and give antibiotics	0-8/1000
4&5	Infants with risk factors and meeting NICE criteria for antibiotics Postnatal ward only	Take blood culture and give antibiotics	0-6/1000
6	Infants with risk factors Postnatal ward only	Take blood culture, withhold antibiotics, measure FBC and CRP. Observe for 36 hours. Antibiotics if the CRP is significantly raised, clinical signs or positive blood culture.	0-8/1000
7	Infants with risk factors and meeting NICE criteria for antibiotics Postnatal ward only	Take blood culture and give antibiotics	0-8/1000
8	Infants with risk factors and meeting NICE criteria for antibiotics. Postnatal ward only.	Take blood culture and give antibiotics	0-8/1000
9	Infants with risk factors Postnatal ward and neonatal unit	Take blood culture, withhold antibiotics, measure CRP, repeat CRP at 18-24 hours. Observe for 36 hours. Antibiotics if CRP is significantly raised, clinical signs or positive blood culture.	0-8/1000
10	All eligible Postnatal ward only	Take blood culture, withhold antibiotics, measure CRP, repeat CRP at 18-24 hours. Observe for 36 hours. Antibiotics if CRP is significantly raised, clinical signs or positive blood culture.	0-8/1000

Supplementary table 2. Data for the hospitals following SRC.

Abbreviations: LNU – local neonatal unit, SCBU – special care baby unit. *Combined data for two hospitals provided. ** ≥ 34 weeks' gestation.

SRC hospital	1	2	3	4&5*	6	7	8	9	10	Total
Type of neonatal unit	LNU	Tertiary	LNU	Tertiary & LNU	LNU	LNU	SCBU	Tertiary	Tertiary	
Expected total livebirths	5225	5982	3944	8860	3927	3919	2496	4626	5040	44019
Months of available data	12	12	12	24	12	12	7	12	12	115
Livebirths denominator corresponding to months of available data	5225	5982	3944	8860	3927	3919	1429	4626	5040	42952
Number screened ≤ 24 h, n (%)	537 (10)	356 (6)	349 (8.8)	544 (6.1)	199 (5.1)	359 (9.2)	91 (6.4)	406 (8.8)	456 (9)	3297 (7.7)
Number treated ≤ 24 h, n (%)	537 (10)	308 (5.1)	349 (8.8)	543 (6.1)	177 (4.5)	351 (9)	90 (6.3)	366 (7.9)	390 (7.7)	3111 (7.2)
Number screened ≤ 7 days, n (%)	623 (12)	455 (7.6)	422 (11)	646 (7.3)	248 (6.3)	437 (11)	108 (7.6)	485 (11)	507 (10)	3931 (9.2)
Number treated ≤ 7 days, n (%)	620 (12)	404 (6.8)	421 (11)	643 (7.3)	225 (5.7)	427 (11)	107 (7.5)	467 (10)	457 (9.1)	3771 (8.8)
Missed, culture-proven, n	0	0	1	0	0	0	0	1	0	2
Missed, culture-negative, n (%)	25 (0.5)	17 (0.3)	19 (0.5)	23 (0.3)	25 (0.6)	16 (0.4)	2 (0.1)	44 (1.0)	16 (0.3)	187 (0.4)

Supplementary table 3. Data for the hospitals following NICE.Abbreviations: LNU – local neonatal unit, SCBU – special care baby unit. * ≥ 34 weeks' gestation.

NICE hospital	1	2	3	4	5	6	7	8	9	10	11	12	13	14	15	16	
Type of neonatal unit	Tertiary	Tertiary	SCBU	Tertiary	Tertiary	LNU	LNU	LNU	LNU	SCBU	LNU	Tertiary	LNU	SCBU	LNU	LNU	
Months of available data	12	12	5	12	7	12	12	11	9	1	9	12	12	12	12	10	160
Expected total livebirth denominator	5351	3144	1722	5509	3895	4964	3305	5272	3863	3852	6665	4759	2119	4591	4018	3577	66606
Livebirths denominator corresponding to months of available data	5351	3144	710	5509	2272	4964	3305	4760	2897	321	4999	4759	2119	4591	4018	3012	56731
Number screened ≤ 24 h, n (%)	963 (18)	487 (16)	64 (9)	1125 (20)	441 (20)	675 (14)	421 (13)	641 (14)	400 (14)	69 (22)	565 (11)	791 (17)	310 (15)	569 (12)	507 (13)	409 (14)	8437 (15)
Number treated ≤ 24 h, n (%)	964 (18)	487 (16)	64 (9)	1125 (20)	441 (20)	674 (14)	420 (13)	638 (14)	400 (14)	69 (22)	565 (11)	791 (17)	309 (15)	568 (12)	507 (13)	406 (14)	8428 (15)
Number screened ≤ 7 d, n (%)	1061 (20)	528 (17)	68 (9.6)	1198 (22)	498 (22)	726 (15)	463 (14)	716 (15)	441 (15)	79 (25)	592 (12)	860 (18)	360 (17)	618 (14)	566 (14)	468 (16)	9242 (16)
Number treated ≤ 7 d, n (%)	1060 (20)	527 (17)	68 (9.6)	1197 (22)	495 (22)	726 (15)	462 (14)	712 (15)	441 (15)	79 (25)	591 (12)	860 (18)	360 (17)	618 (14)	566 (14)	464 (15)	9226 (16)
Missed, culture proven, n	0	1	0	2	0	0	0	0	0	0	0	0	1	0	1	0	5
Missed, culture-negative, n (%)	15 (0.3)	7 (0.2)	3 (0.4)	16 (0.3)	6 (0.3)	15 (0.3)	5 (0.2)	2 (0)	9 (0.3)	4 (1.2)	6 (0.1)	26 (0.5)	9 (0.4)	11 (0.2)	13 (0.3)	11 (0.4)	158 (0.3)

Supplementary table 4. Distribution and incidence of organisms isolated.

*Other pathogens included: *Acinetobacter lwoffii*, *Enterobacter cloacae*, *Enterococcus faecalis*, *Haemophilus parainfluenzae*, *Listeria monocytogenes*, *Morganella morganii*, *Moraxella osloensis*, and *Staphylococcus aureus*. *Streptococcus dysgalactiae* was not listed in the Vermont Oxford Network Manual of Operations 2021, but biologically similar to *Streptococcus pyogenes* and included as a pathogen after discussion with PTH. Two cases excluded from the total reported as these did not fulfill definition of growth of organism in blood or CSF: 16S PCR in one infant reported *Streptococcus* species matching best to *Streptococcus oralis*; Gram negative bacilli were identified by microscopy in another infant, but failed to grow on culture. One case with *Moraxella osloensis* was not classified as early onset sepsis as the infant had mild symptoms (re-admitted >24 hours for feeding difficulties), was discharged home after 2 days of antibiotics, and the blood culture isolated the organism after 72 hours of incubation. Two infants with bacteraemia were excluded due to congenital skin anomalies predisposing to postnatal acquisition of infection: *Bacillus cereus* with *Acinetobacter baumannii*, and *Staphylococcus aureus*. **≥34 weeks' gestation.

Organism	SRC	NICE	Total	Incidence per 1000 livebirths ** (95%CI)
<i>Group B Streptococcus</i>	15	29	44	0.44 [0.33-0.59]
<i>Escherichia coli</i>	2	5	7	0.07 [0.03-0.15]
Other pathogens*	3	13	16	0.16 [0.1-0.26]
Contaminants	48	77	125	1.25 [1.05-1.49]

Supplementary table 5. Maternal and infant characteristics of 5 cases of EOS identified >24 hours after birth

*As per the Medical Certificate of Cause of Death following a Coroner's investigation and based on postmortem; blood culture not taken at presentation to the emergency department. **Group B *Streptococcus* colonisation in previous pregnancy. Status in this pregnancy unknown. One case with *Moraxella osloensis* was not classified as early onset sepsis as the infant had mild symptoms (re-admitted >24 hours for feeding difficulties), was discharged home after 2 days of antibiotics, and the blood culture isolated the organism after 72 hours of incubation.

Case	Type of unit	Pathogen/s	Gestational age (weeks)	Birth-weight (g)	Age at antibiotics (hours:minutes)	Re-admission?	Mode of delivery	Length of rupture of membranes (hours)	Highest antepartum temperature	Maternal group B <i>Streptococcus</i> status	Clinical information	Duration of intravenous antibiotics (days)	Final outcome
1	SRC	<i>Group B Streptococcus</i>	38+0	2600	26:40	No	Vaginal	30	36.8	Unknown	Developed symptoms and admitted to neonatal unit	7	Discharged home
2	NICE	<i>Escherichia coli</i> and <i>Group B Streptococcus</i>	36+4	2715	30:43	No	Vaginal	Unknown	37.5	Positive	Severe hydronephrosis	21	Discharged home
3	NICE	<i>Group B Streptococcus</i> *	38+2	2730	-	Yes	Vaginal	6	37.1	Positive**	Cardiac arrest at home on day 3	-	Died
4	NICE	<i>Haemophilus parainfluenzae</i>	41+5	3570	65:09	Yes	Vaginal	4	36.8	Positive	Presented with feeding difficulties	7	Discharged home
5	NICE	<i>Moraxella osloensis</i> and <i>Corynebacterium aurimucosum</i>	41+2	3260	165:25	Yes	Vaginal	1.5	37.2	Unknown	Presented with feeding difficulties	5	Discharged home

Supplementary file 1. Detailed case histories of cases of EOS identified >24 hours after birth.

Case 1: This infant was initially observed on the postnatal ward. EOS score at birth was 0-33. The infant developed symptoms, and received antibiotics just after 24 hours thus meeting the definition for missed case. The CSF was sterile. This infant was born at a hospital following SRC. There was prolonged rupture of membranes (>18 hours) and would have received observations if NICE was followed, but unlikely processes or outcome would have been different. Case 2: This was a female infant with hydronephrosis diagnosed during the antenatal period and was admitted directly to the neonatal unit. She received prophylactic trimethoprim on day 1. Empiric antibiotics were started on day 2 following a raised CRP on routine testing. The CSF was sterile. In case 1, there was no maternal indicators to have prompted earlier antibiotics had the infant been cared in a unit following NICE. Moreover, the NICE guideline and the SRC are aimed at managing risk of EOS in healthy infants, and cannot extend to infants with rare anomalies.

Cases 3 – 5 were discharged home from the postnatal ward and returned to hospital. All 3 were born in hospitals following NICE CG149 and there were no clinical indicators for empiric antibiotics. Case 3: The infant was brought to the emergency department following cardiac arrest at home. The infant had had blood sugar monitoring during the initial postnatal period and discharged home on day 1. There had been insufficient opportunity to obtain blood for culture during resuscitative attempts. The Coronial certified cause of death was GBS sepsis as per the postmortem findings, and this was the diagnosis given to the infant's parents. The mother had GBS colonisation in her previous pregnancy. She was not tested during this pregnancy, and did not receive intrapartum antibiotic prophylaxis. Cases 4 and 5 presented with feeding difficulties and were discharged home. Case 4: The mother had GBS colonisation in this pregnancy, but did not receive intrapartum antibiotic prophylaxis. The CSF was sterile in case 4, and not obtained in Case 5. Case 5: *Moraxella* and *Corynebacterium* were isolated. *Moraxella* is an unusual organism and rare cause of human infection, but included in the list of Bacterial Pathogens as per the Vermont Oxford Network. *Corynebacterium* can be considered a contaminant. The infant received 5 days of intravenous antibiotics, and included as EOS for the purpose of comprehensive reporting.

Supplementary table 6. Maternal and infant characteristics of 345 cases where empiric antibiotics were commenced >24 hours from birth, for ≥ 5 days, with negative cultures.

Abbreviations: EOS – early onset sepsis, GBS – group B *Streptococcus*, IQR – interquartile range, ROM – rupture of membranes, SD – standard deviation.

	SRC (n=187)	NICE (n=158)	P value
Gestational age, weeks, mean (SD)	39.9 (1.7)	39.6 (1.5)	0.57
Birthweight, g, mean (SD)	3394 (573)	3277 (583)	0.07
Male, n (%)	117 (63)	86 (54)	0.13
Vaginal delivery, n (%)	107 (57)	98 (62)	0.37
Highest maternal antepartum temperature, median (IQR) †	37.1 (36.8-37.8)	37.0 (36.7-37.2)	0.05
Maternal GBS status, n (%)			
-Unknown	134 (72)	91 (58)	0.006
-Positive	20 (11)	10 (6.3)	0.15
-Negative	32 (17)	57 (36)	<0.001
ROM, h, median (IQR) ‡	13 (2-22)	7 (1–16)	<0.001
Maternal antibiotics, n (%)			
-No antibiotics or any <2h prior to birth	138 (75)	131 (89)	<0.001
-GBS specific antibiotics >2h prior to birth	19 (10)	7 (4.8)	0.06
-Broad spectrum antibiotics 2-3.9h prior to birth	11 (6)	3 (2)	0.06
-Broad spectrum antibiotics >4h prior to birth	16 (8.7)	6 (4.1)	0.09
Age at antibiotics, hours, median (IQR)	36 (28-54)	37 (28–50)	0.70
Days of antibiotics, median (IQR)	5 (5-7)	5 (5-5)	0.15
Initial hospital stay			
-Assigned postnatal care and never admitted, n (%)	118 (63)	84 (53)	0.06
-Assigned postnatal care and later admitted to neonatal unit, n (%)	56 (30)	70 (44)	0.006
-Admitted to neonatal unit from birth centre, n (%)	13 (7)	4 (2.5)	0.06
Re-admission from home, n (%)	33 (18)	39 (25)	0.1
Death, n	0	0	

EOS score at birth, median (IQR)	0.34 (0.15-0.78)	-	
----------------------------------	------------------	---	--

† Highest maternal antepartum temperature missing for SRC 34, NICE 92 infants

± Rupture of membrane timing missing for SRC 14, NICE 47 infants