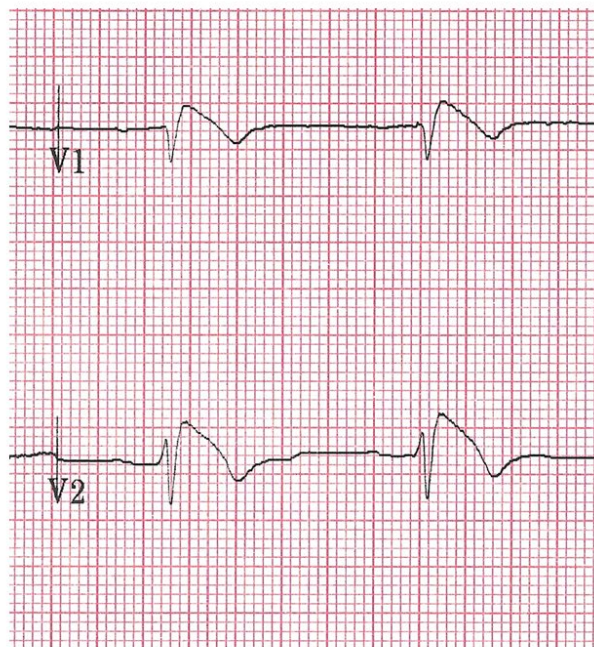


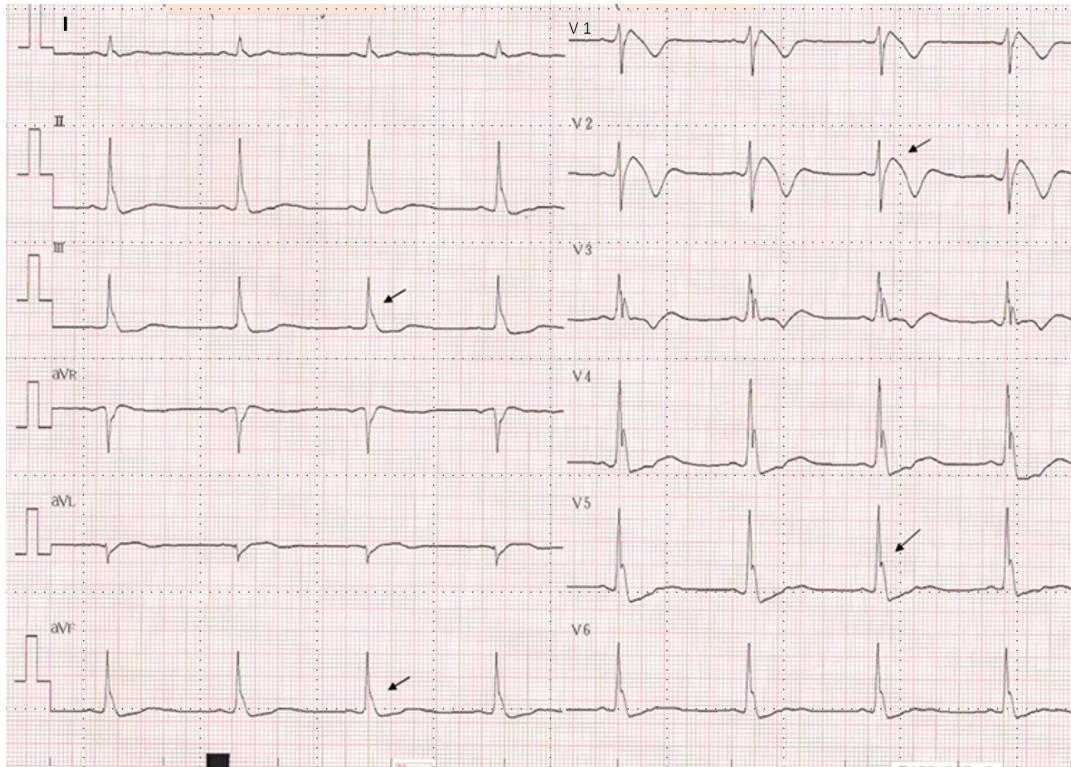
SUPPLEMENTAL MATERIAL

Supplemental Figures

Supplemental Figure 1: Type 1 Brugada ECG pattern.



Supplemental Figure 2: Combine early repolarization and Brugada Type I ECG



Supplemental Figure Legends

Supplemental Figure 1: Typical type 1 Brugada ECG pattern in V1 and V2.

Supplemental Figure 2. EKG of a patient with a combine early repolarization (ER) and Brugada ECG pattern. Note coved type ST segment elevation in V1 and V2 (arrow) and J-wave augmentation typical of ER pattern in both inferior and lateral precordial leads (arrows).