

Supporting Information

A Retrospective Analysis of Melioidosis in Cambodian Children, 2009 – 2013

Paul Turner, Sabine Kloprogge, Thyl Miliya, Sona Soeng, Pisey Tan, Poda Sar, Pagnarith Yos, Catrin E Moore, Vanaporn Wuthiekanun, Direk Limmathurotsakul, Claudia Turner, Nicholas PJ Day, David AB Dance

Figure S1. Study flow chart

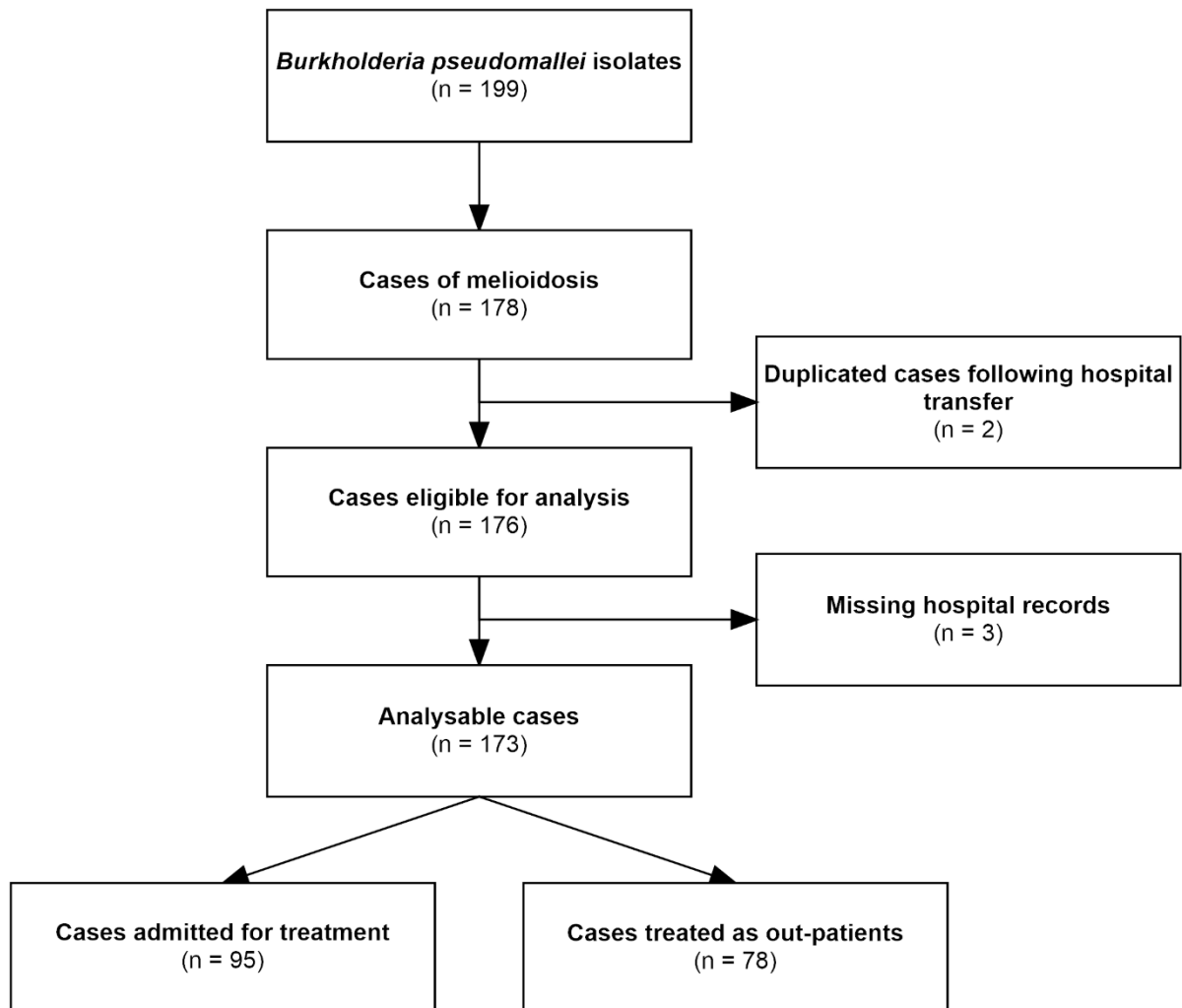


Figure S2. Number of culture-confirmed melioidosis cases presenting to Angkor Hospital for Children, 2009 - 2013

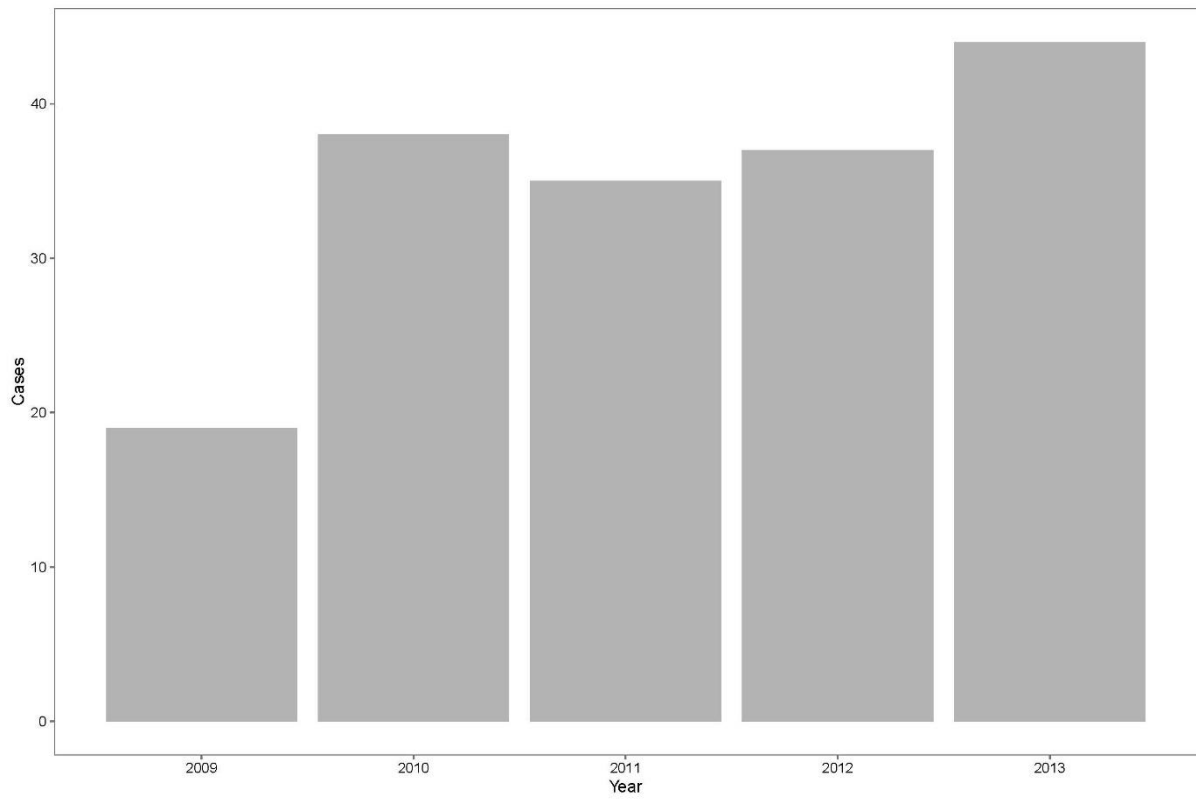


Figure S3. Commune-level geographic distribution of culture-confirmed melioidosis cases from all provinces presenting to Angkor Hospital for Children, 2009 – 2013.

Patients were mapped to the commune-level using data from the Cambodia National Census, 2008. Cambodia is shaded light grey with surrounding countries shaded dark grey.

Study data overlaid on the Open Development Cambodia basemap

[<http://www.opendevelopmentcambodia.net/maps/downloads/>. Accessed 1st July 2016.]

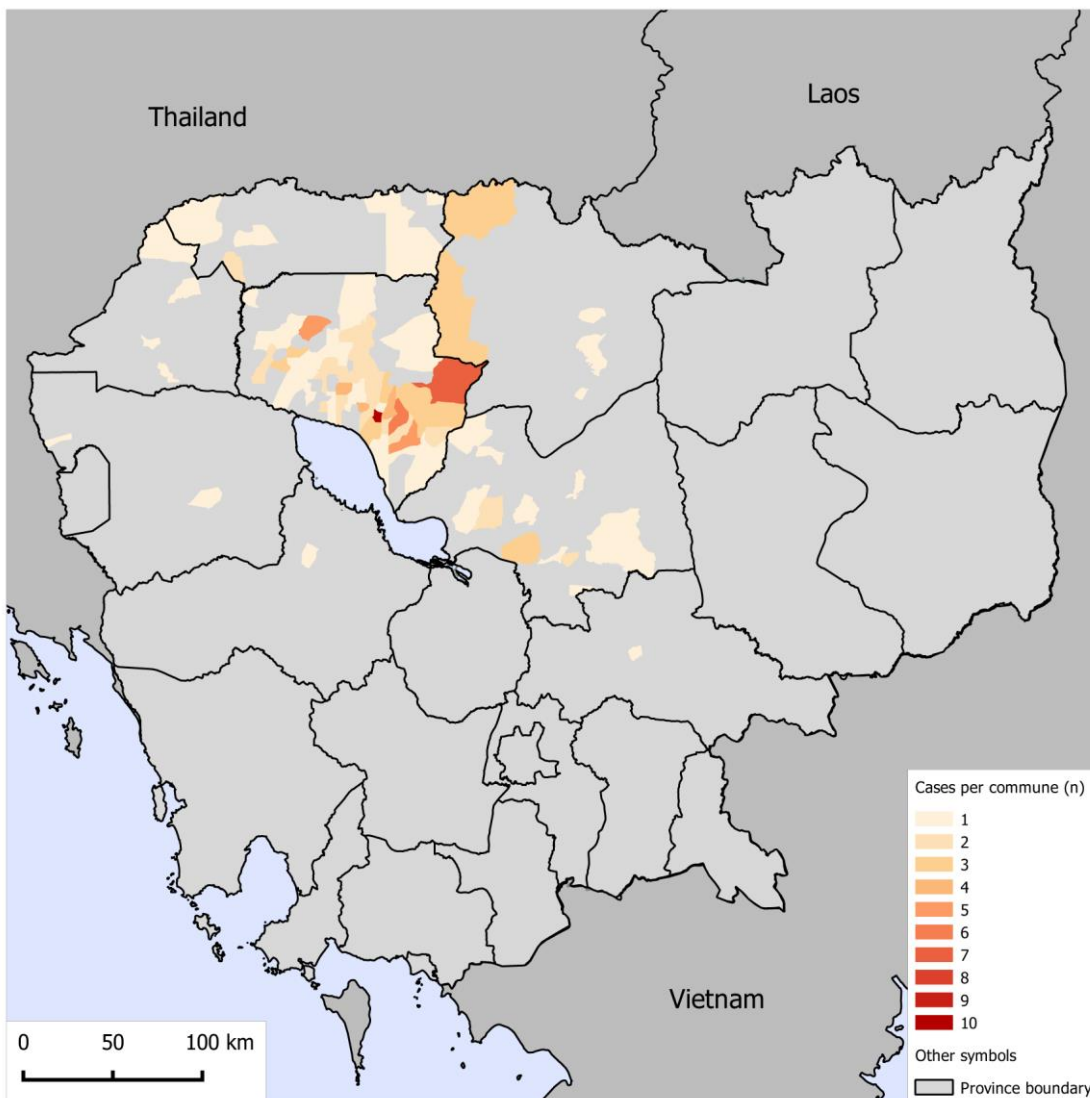


Figure S4. Siem Reap province commune-level geographic distribution of culture-confirmed melioidosis cases admitted to Angkor Hospital for Children, 2009 – 2013

Patients were mapped to the commune-level using data from the Cambodia National Census, 2008. AHC: Angkor Hospital for Children; SC: AHC Satellite Clinic

Study data overlaid on the Open Development Cambodia basemap

[<http://www.opendevdevelopmentcambodia.net/maps/downloads/>. Accessed 1st July 2016.]

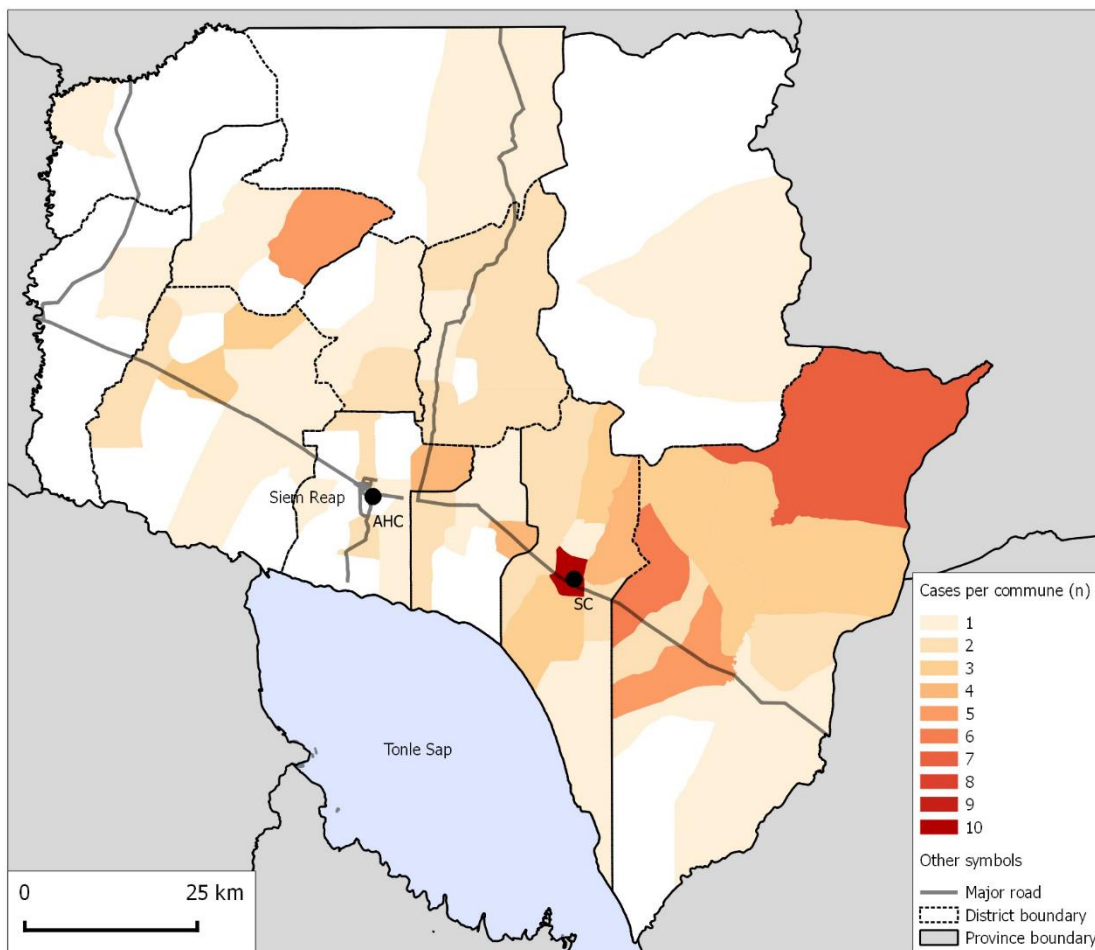


Figure S5. Siem Reap province commune-level geographic distribution of all patients admitted to Angkor Hospital for Children, 2009 – 2013

Patients were mapped to the commune-level using data from the Cambodia National Census, 2008. AHC: Angkor Hospital for Children; SC: AHC Satellite Clinic

Study data overlaid on the Open Development Cambodia basemap

[<http://www.opendevdevelopmentcambodia.net/maps/downloads/>. Accessed 1st July 2016.]

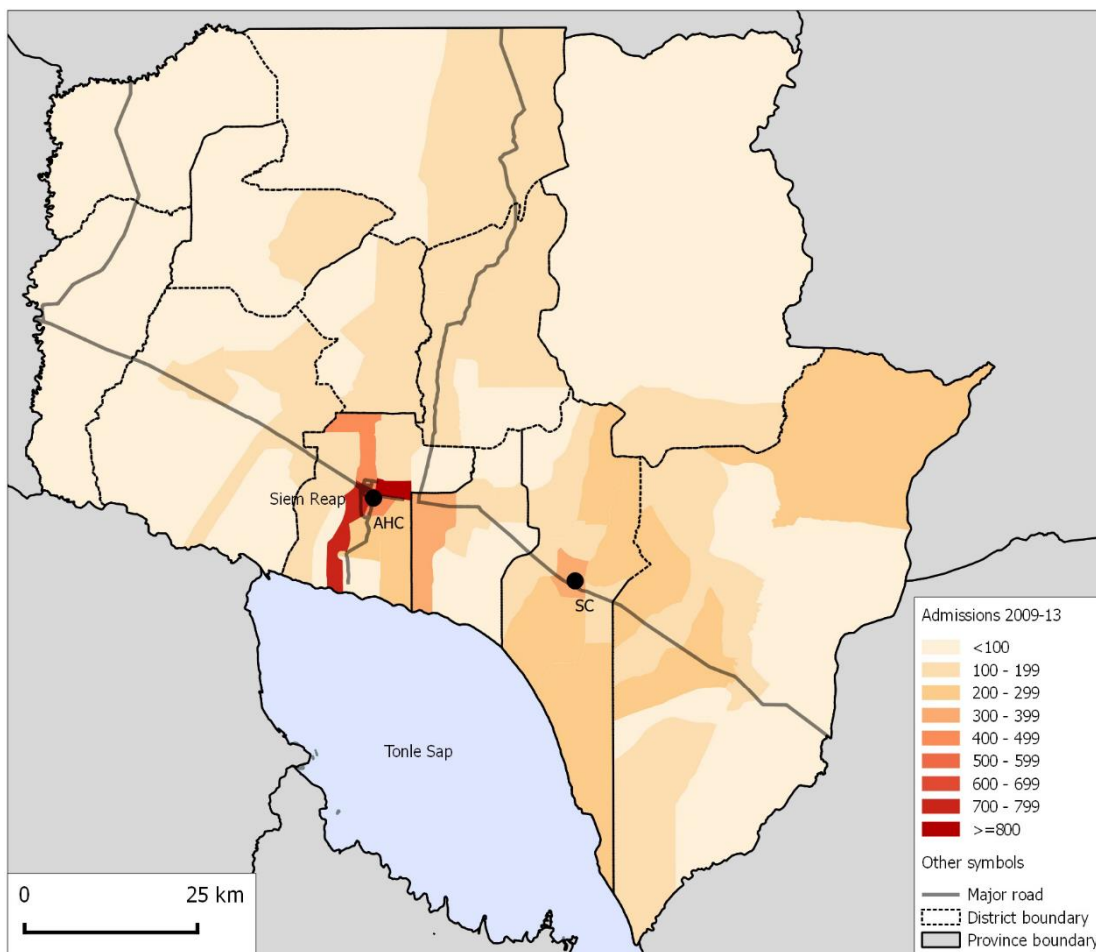


Figure S6. Age distribution of 173 melioidosis cases presenting to Angkor Hospital for Children, 2009 – 2013

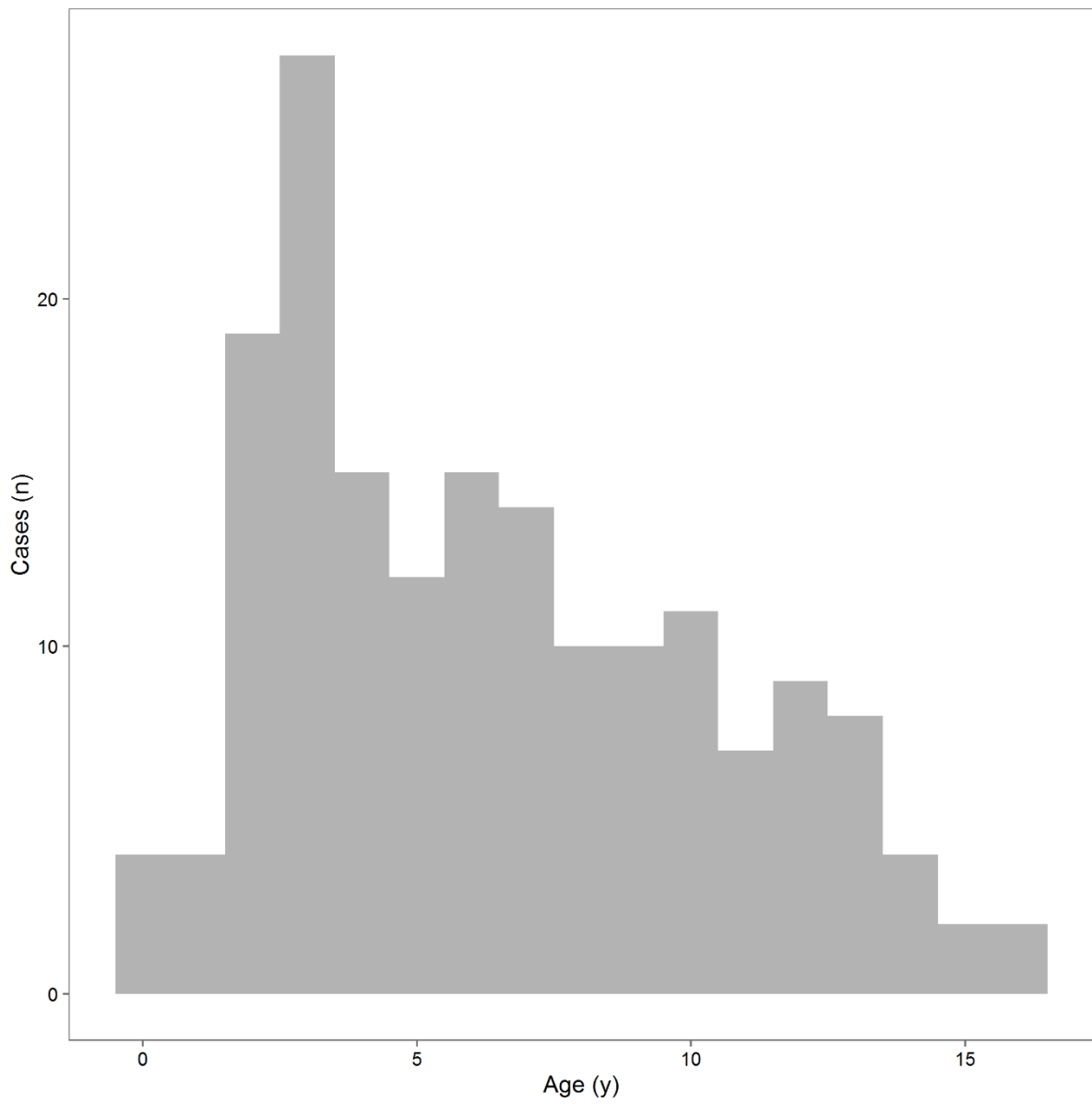


Figure S7. Annual Siem Reap commune level melioidosis incidence estimates in children aged <15 years

