

Supplementary Table 1. Relationship between the estimated blood loss (in mL) and selected maternal and gestational characteristics.

<i>Variables</i>	Raw coeff. (95% CI)	p	Adjusted coeff. (95% CI)	p
Mean maternal age in years, 1-year increase	28.3 (19.6; 37.0)	<0.001	7.57 (2.09; 13.1)	0.007
Mean gestational age at delivery, 1-week increase	-117 (-145; -91)	<0.001	-20.7 (-50.8; 9.28)	0.18
Gravidity				
- Primigravidae (ref. cat.)	0	--	--	--
- Multigravidae	111 (-12.5; 234)	0.08	--	--
- Grand-multigravidae	515 (263; 767)	<0.001	--	--
Gravidity, 1-category increase	105 (63.4; 148)	<0.001	--	--
Parity				
- Nulliparous women (ref. cat.)	0	--	0	--
- Primiparous women	50.5 (-80.9; 182)	0.5	3.61 (-80.9; 88.1)	0.9
- Multiparous women	215 (113; 316)	<0.001	12.4 (-43.1; 67.9)	0.7
Parity, 1-category increase	104 (61.3; 146)	<0.001	-5.32 (-41.7; 31.1)	0.5
Number of prior cesarean sections				
- None (ref. cat.)	0	--	--	--
- 1 prior CS	50.1 (-77.7; 178)	0.4	--	--
- 2 prior CS	137 (26.8; 248)	0.015	--	--
- ≥3 prior CS	149 (16.1; 283)	0.028	--	--
N of prior CS, 1-unit increase	116 (73.3;159)	<0.001	--	--
Placenta accreta spectrum disorders				
- PAS0 (ref. cat.)	0	--	0	--
- PAS1	-137 (-282; 8.64)	0.06	203 (-5.33; 412)	0.006
- PAS2	240 (24.4; 455)	0.03	468 (237; 699)	<0.001
- PAS3	756 (666; 845)	<0.001	881 (586; 1176)	<0.001
PAS, 1-category increase	262 (234; 291)	<0.001	314 (230; 399)	<0.001
Hystopathological diagnosis				
- Placenta previa without PAS (ref.cat.)	0	--	--	--
- Placenta accreta	-121 (-304; 62)	0.2	--	--
- Placenta increta	-133 (-351; 83)	0.2	--	--
- Placenta percreta	703 (622; 783)	<0.001	--	--
Hystopathological diagnosis, 1-category increase	227 (198; 255)	<0.001	--	--
Comorbidities, yes vs no				
General vs epidural anesthesia	-107 (-487; 273)	0.6	25.2 (-87.7; 138)	0.7
Surgical time, 10-minute increase	610 (399; 821)	<0.001	51.0 (-251; 352)	0.7
Surgical complications, yes vs no	40.8 (33.7; 47.8)	<0.001	-15.0 (-32.8; 2.79)	0.09
Length of in-hospital stay, 1-day increase	836 (664; 1009)	<0.001	315 (-0.13; 630)	0.05
Admission to intensive care unit, yes vs no	105 (84; 127)	<0.001	-14.6 (-44.3; 15.2)	0.3
	477 (274; 680)	<0.001	69.9 (-299; 159)	0.5

PAS = Placenta accreta spectrum disorders; CS = Cesarean section; CI = Confidence Interval; coeff = coefficient; ref. cat. = reference
 Due to a high degree of collinearity across gravidity, number of previous cesarean sections and parity, only the latter covariate was reported in the final multivariate model. Similarly, hystopathological diagnosis and PAS grade were highly collinear, thus only the latter was reported in the final model. Units of red blood cells, platelets and fresh frozen plasma transfused were not included in the model, as they were a consequence rather than a determinant of the estimated blood loss (the more severe the hemorrhage, the higher the amount of red blood cells, platelets and plasma transfused).

Supplementary Table 2. Relationship between the units of red blood cells transfused and selected maternal and gestational characteristics.

<i>Variables</i>	Raw coeff. (95% CI)	p	Adjusted coeff. (95% CI)	p
Mean maternal age in years, 1-year increase	0.11 (0.07; 0.16)	<0.001	0.01 (-0.01; 0.03)	0.4
Mean gestational age at delivery, 1-week increase	-0.57 (-0.69; -0.44)	<0.001	-0.04 (-0.15; 0.07)	0.5
Gravidity				
- Primigravidae (ref. cat.)	0	--	--	--
- Multigravidae	0.22 (-0.38; 0.81)	0.5	--	--
- Grand-multigravidae	3.65 (2.49; 4.81)	<0.001	--	--
Gravidity, 1-category increase	0.55 (0.35; 0.75)	<0.001	--	--
Parity				
- Nulliparous women (ref. cat.)	0	--	--	--
- Primiparous women	0.16 (-0.47; 0.79)	0.6	-0.02 (-0.27; 0.23)	0.9
- Multiparous women	1.02 (0.54; 1.51)	<0.001	-0.01 (-0.13; 0.12)	0.9
Parity, 1-category increase	0.51 (0.31; 0.72)	<0.001	-0.06 (-0.16; -0.04)	0.2
Number of prior cesarean sections				
- None (ref. cat.)	0	--	--	--
- 1 prior CS	0.19 (-0.42; 0.80)	0.5	--	--
- 2 prior CS	0.74 (0.21; 1.26)	0.006	--	--
- ≥3 prior CS	0.55 (-0.09; 1.19)	0.09	--	--
N of prior CS, 1-unit increase	0.54 (0.34; 0.75)	<0.001	--	--
Placenta accreta spectrum disorders				
- PAS0 (ref. cat.)	0	--	--	--
- PAS1	0.19 (-0.42; 0.80)	0.5	-0.26 (-1.19; 0.67)	0.6
- PAS2	0.74 (0.21; 1.26)	0.006	0.70 (-0.37; 1.78)	0.2
- PAS3	0.55 (-0.09; 1.19)	0.09	4.11 (2.80; 5.41)	<0.001
PAS, 1-category increase	1.38 (1.26; 1.50)	<0.001	1.74 (1.33; 2.15)	<0.001
Hystopathological diagnosis				
- Placenta previa without PAS (ref.cat.)	0	--	--	--
- Placenta accreta	-1.06 (-1.92; -0.18)	0.02	--	--
- Placenta increta	-0.99 (-2.02; 0.05)	0.06	--	--
- Placenta percreta	3.67 (3.33; 4.01)	<0.001	--	--
Hystopathological diagnosis, 1-category increase	1.15 (1.02; 1.27)	<0.001	--	--
Estimated blood loss, 100mL-increase	0.33 (0.29; 0.38)	<0.001	0.05 (-0.00; 0.10)	0.08
Platelets transfused, 1-Unit increase	0.91 (0.78; 1.04)	<0.001	0.16 (-0.07; 0.39)	0.17
Fresh frozen plasma transfused, 1-Unit increase	0.72 (0.63; 0.82)	<0.001	0.04 (-0.20; 0.28)	0.7
Comorbidities, yes vs no	-0.66 (-2.48; 1.16)	0.5	0.01 (-0.52; 0.53)	0.9
General vs epidural anesthesia	2.85 (1.83; 3.86)	<0.001	-0.13 (-1.23; 0.98)	0.8
Surgical time, 10-minute increase	0.22 (0.19; 0.25)	<0.001	0.05 (-0.04; 0.14)	0.3
Surgical complications, yes vs no	3.13 (2.24; 4.01)	<0.001	0.13 (-0.78; 1.04)	0.8
Admission to intensive care unit, yes vs no	3.41 (2.49; 4.33)	<0.001	-0.40 (-1.86; 1.06)	0.6
Length of in-hospital stay, 1-day increase	0.53 (0.44; 0.63)	<0.001	-0.08 (-0.25; 0.09)	0.4

PAS = Placenta accreta spectrum disorders; CS = Cesarean section; CI = Confidence Interval; coeff = coefficient; ref. cat. = reference category. Due to a high degree of collinearity across gravidity, number of previous cesarean sections and parity, only the latter covariate was reported in the final multivariate model. Similarly, hystopathological diagnosis and PAS grade were highly collinear, thus only the latter was reported in the final model.

Supplementary Table 3. Relationship between the units of fresh frozen plasma transfused and selected maternal and gestational characteristics.

<i>Variables</i>	Raw coeff. (95% CI)	p	Adjusted coeff. (95% CI)	p
Mean maternal age in years, 1-year increase	0.08 (0.04; 0.12)	<0.001	-0.01 (-0.03; 0.02)	0.6
Mean gestational age at delivery, 1-week increase	-0.40 (-0.52; -0.27)	<0.001	0.03 (-0.08; 0.15)	0.6
Gravidity				
- Primigravidae (ref. cat.)	0	--	--	--
- Multigravidae	0.79 (0.23; 1.36)	0.006	--	--
- Grand-multigravidae	3.50 (2.32; 4.69)	<0.001	--	--
Gravidity, 1-category increase	0.45 (0.26; 0.64)	<0.001	--	--
Parity				
- Nulliparous women (ref. cat.)	0	--	0	--
- Primiparous women	0.74 (0.08; 1.41)	0.029	-0.14 (-0.46; 0.19)	0.4
- Multiparous women	1.17 (0.64; 1.70)	<0.001	0.09 (-0.06; 0.25)	0.2
Parity, 1-category increase	0.37 (0.18; 0.56)	<0.001	-0.08 (-0.20; 0.04)	0.2
Number of prior cesarean sections				
- None (ref. cat.)	0	--	--	--
- 1 prior CS	0.69 (0.03; 1.34)	0.04	--	--
- 2 prior CS	1.33 (0.74; 1.91)	<0.001	--	--
- ≥3 prior CS	0.98 (0.30; 1.66)	0.005	--	--
N of prior CS, 1-unit increase	0.42 (0.22; 0.61)	<0.001	--	--
Placenta accreta spectrum disorders				
- PAS0 (ref. cat.)	0	--	0	--
- PAS1	-0.05 (-0.49; 0.40)	0.8	-0.67 (-1.81; 0.47)	0.2
- PAS2	0.20 (-0.45; 0.85)	0.5	-0.34 (-1.59; 0.92)	0.6
- PAS3	3.58 (3.19; 3.97)	<0.001	2.57 (0.65; 4.49)	0.009
PAS, 1-category increase	1.08 (0.94; 1.22)	<0.001	1.19 (0.61; 1.77)	<0.001
Hystopathological diagnosis				
- Placenta previa without PAS (ref.cat.)	0	--	--	--
- Placenta accreta	-0.05 (-0.69; 0.60)	0.9	--	--
- Placenta increta	-0.05 (-0.80; 0.71)	0.9	--	--
- Placenta percreta	2.81 (2.40; 3.23)	<0.001	--	--
Hystopathological diagnosis, 1-category increase	0.87 (0.73; 1.01)	<0.001	--	--
Estimated blood loss, 100mL-increase	0.31 (0.27; 0.35)	<0.001	0.14 (0.03; 0.24)	0.010
Red blood cells transfused, 1-Unit increase	0.63 (0.55; 0.72)	<0.001	0.05 (-0.26; 0.36)	0.7
Platelets transfused, 1-Unit increase	0.76 (0.63; 0.89)	<0.001	0.06 (-0.27; 0.38)	0.7
Comorbidities, yes vs no	-0.81 (-2.52; 0.89)	0.3	-0.15 (-0.60; 0.32)	0.5
General vs epidural anesthesia	2.90 (1.86; 3.94)	<0.001	0.85 (-0.47; 2.17)	0.2
Surgical time, 10-minute increase	0.16 (0.13; 0.20)	<0.001	-0.03 (-0.14; 0.07)	0.5
Surgical complications, yes vs no	2.89 (2.06; 3.71)	<0.001	0.40 (-0.81; 1.61)	0.5
Admission to intensive care unit, yes vs no	2.67 (1.78; 3.56)	<0.001	-0.19 (-1.84; 1.46)	0.8
Length of in-hospital stay, 1-day increase	0.53 (0.44; 0.82)	<0.001	0.32 (0.16; 0.48)	<0.001

PAS = Placenta accreta spectrum disorders; CS = Cesarean section; CI = Confidence Interval; coeff = coefficient; ref. cat. = reference category. Due to a high degree of collinearity across gravidity, number of previous cesarean sections and parity, only the latter covariate was reported in the final multivariate model. Similarly, hystopathological diagnosis and PAS grade were highly collinear, thus only the latter was reported in the final model.

Supplementary Table 4. Relationship between the units of platelets transfused and selected maternal and gestational characteristics.

<i>Variables</i>	Raw coeff. (95% CI)	p	Adjusted coeff. (95% CI)	p
Mean maternal age in years, 1-year increase	0.07 (0.04; 0.10)	<0.001	0.02 (-0.01; 0.04)	0.14
Mean gestational age at delivery, 1-week increase	-0.30 (-0.40; -0.20)	<0.001	-0.04 (-0.20; 0.11)	0.6
Gravidity				
- Primigravidae (ref. cat.)	0	--	--	--
- Multigravidae	0.48 (0.06; 0.91)	<0.001	--	--
- Grand-multigravidae	2.89 (2.00; 3.78)	<0.001	--	--
Gravidity, 1-category increase	0.26 (0.11; 0.40)	0.001	--	--
Parity				
- Nulliparous women (ref. cat.)	0	--	0	--
- Primiparous women	0.70 (0.19; 1.21)	0.008	0.12 (-0.17; 0.41)	0.4
- Multiparous women	0.67 (0.26; 1.08)	0.001	-0.06 (-0.20; 0.09)	0.4
Parity, 1-category increase	0.26 (0.11; 0.41)	0.001	-0.02 (-0.15; 0.11)	0.8
Number of prior cesarean sections				
- None (ref. cat.)	0	--	--	--
- 1 prior CS	0.64 (0.14; 1.15)	0.012	--	--
- 2 prior CS	0.56 (0.11; 1.01)	0.02	--	--
- ≥3 prior CS	0.91 (0.39; 1.43)	0.01	--	--
N of prior CS, 1-unit increase	0.30 (0.15; 0.45)	<0.001	--	--
Placenta accreta spectrum disorders				
- PAS0 (ref. cat.)	0	--	0	--
- PAS1	-0.03 (-0.42; 0.36)	0.9	-0.05 (-0.98; 0.88)	0.9
- PAS2	0.03 (-0.87; 0.93)	0.9	-0.11 (-1.06; 0.85)	0.8
- PAS3	2.44 (1.30; 3.58)	<0.001	2.59 (1.16; 4.02)	<0.001
PAS, 1-category increase	0.70 (0.58; 0.82)	<0.001	1.03 (0.59; 1.47)	<0.001
Hystopathological diagnosis				
- Placenta previa without PAS (ref.cat.)	0	--	--	--
- Placenta accreta	-0.03 (-0.57; 0.50)	0.9	--	--
- Placenta increta	-0.03 (-0.67; 0.60)	0.9	--	--
- Placenta percreta	1.80 (1.45; 2.14)	<0.001	--	--
Hystopathological diagnosis, 1-category increase	0.56 (0.44; 0.67)	<0.001	--	--
Estimated blood loss, 100mL-increase	0.24 (0.21; 0.27)	<0.001	0.19 (0.12; 0.26)	<0.001
Red blood cells transfused, 1-Unit increase	0.46 (0.39; 0.53)	<0.001	0.15 (-0.06; 0.36)	0.17
Fresh frozen plasma transfused, 1-Unit increase	0.44 (0.36; 0.51)	<0.001	0.04 (-0.19; 0.27)	0.7
Comorbidities, yes vs no	-0.52 (-1.82; 0.77)	0.4	-0.08 (-0.44; 0.28)	0.7
General vs epidural anesthesia	1.44 (0.69; 2.18)	<0.001	-0.20 (-1.57; 1.19)	0.8
Surgical time, 10-minute increase	0.11 (0.08; 0.13)	<0.001	0.02 (-0.06; 0.11)	0.6
Surgical complications, yes vs no	0.60 (0.95; 2.26)	<0.001	-0.74 (-2.17; 0.68)	0.3
Admission to intensive care unit, yes vs no	0.47 (0.77; 2.16)	<0.001	-0.11 (-0.27; 0.05)	0.19
Length of in-hospital stay, 1-day increase	0.25 (0.17; 0.33)	<0.001	-0.02 (-1.24; 1.20)	0.9

PAS = Placenta accreta spectrum disorders; CS = Cesarean section; CI = Confidence Interval; coeff = coefficient; ref. cat. = reference category. Due to a high degree of collinearity across gravidity, number of previous cesarean sections and parity, only the latter covariate was reported in the final multivariate model. Similarly, hystopathological diagnosis and PAS grade were highly collinear, thus only the latter was reported in the final model.

Supplementary Table 5. Relationship between the length of surgical time and selected maternal and gestational characteristics.

<i>Variables</i>	Raw coeff. (95% CI)	p	Adjusted coeff. (95% CI)	p
Mean maternal age in years, 1-year increase	5.05 (3.88; 6.23)	<0.001	0.15 (-0.42; 0.71)	0.7
Mean gestational age at delivery, 1-week increase	-20.5 (-24.0; -17.0)	<0.001	-2.62 (-4.58; -0.66)	0.009
Gravidity				
- Primigravidae (ref. cat.)	0	--	--	--
- Multigravidae	53.3 (36.1; 70.5)	<0.001	--	--
- Grand-multigravidae	121 (84.5; 157)	<0.001	--	--
Gravidity, 1-category increase	22.8 (17.2; 28.4)	<0.001	--	--
Parity				
- Nulliparous women (ref. cat.)	0	--	0	--
- Primiparous women	54.1 (35.0; 73.2)	<0.001	-2.65 (-11.3; 5.97)	0.5
- Multiparous women	67.6 (52.4; 82.8)	<0.001	-0.94 (-8.31; 6.44)	0.8
Parity, 1-category increase	22.8 (16.0; 27.5)	<0.001	2.35 (-0.69; 5.38)	0.13
Number of prior cesarean sections				
- None (ref. cat.)	0	--	--	--
- 1 prior CS	56.1 (37.2; 75.0)	<0.001	--	--
- 2 prior CS	68.1 (51.2; 85.1)	<0.001	--	--
- ≥3 prior CS	63.4 (43.7; 83.1)	<0.001	--	--
N of prior CS, 1-unit increase	21.8 (16.0; 27.6)	<0.001	--	--
Placenta accreta spectrum disorders				
- PAS0 (ref. cat.)	0	--	0	--
- PAS1	95.2 (87.1; 103)	<0.001	85.9 (74.4;97.5)	<0.001
- PAS2	103 (91.5; 115)	<0.001	92.7 (78.2; 107)	<0.001
- PAS3	126 (119; 133)	<0.001	99.1 (78.9; 119)	<0.001
PAS, 1-category increase	43.6 (40.5; 46.5)	<0.001	38.8 (31.6; 46.1)	<0.001
Hystopathological diagnosis				
- Placenta previa without PAS (ref.cat.)	0	--	--	--
- Placenta accreta	91.1 (80.8; 101)	<0.001	--	--
- Placenta increta	101 (89.1; 113)	<0.001	--	--
- Placenta percreta	121 (114; 128)	<0.001	--	--
Hystopathological diagnosis, 1-category increase	41.0 (38.4; 43.6)	<0.001	--	--
Blood loss, 100mL-increase	8.20 (6.78; 9.62)	<0.001	-1.49 (-2.71; -0.28)	0.016
Red blood cells transfused, 1-Unit increase	19.2 (16.4; 21.9)	<0.001	2.38 (-0.38; 5.13)	0.09
Platelets transfused, 1-Unit increase	18.4 (13.8; 23.0)	<0.001	2.32 (-0.55; 5.19)	0.11
Fresh frozen plasma transfused, 1-Unit increase	16.1 (12.8; 19.5)	<0.001	-0.61 (-3.05; 1.83)	0.6
Comorbidities, yes vs no	15.6 (-38.3; 69.6)	0.6	19.0 (-0.68; 38.8)	0.058
General vs epidural anesthesia	92.1 (62.4; 122)	<0.001	16.4 (3.78; 29.0)	0.011
Surgical complications, yes vs no	80.7 (54.1; 107)	<0.001	5.54 (-7.58; 18.7)	0.4
Admission to intensive care unit, yes vs no	95.1 (67.5; 123)	<0.001	17.1 (3.32; 30.8)	0.015
Length of in-hospital stay, 1-day increase	22.4 (20.2; 24.6)	<0.001	1.96 (-0.36; 4.22)	0.09

PAS = Placenta accreta spectrum disorders; CS = Cesarean section; CI = Confidence Interval; coeff = coefficient; ref. cat. = reference category. Due to a high degree of collinearity across gravidity, number of previous cesarean sections and parity, only the latter covariate was reported in the final multivariate model. Similarly, hystopathological diagnosis and PAS grade were highly collinear, thus only the latter was reported in the final model.

Supplementary Table 6. Relationship between the length of in-hospital stay and selected maternal and gestational characteristics.

<i>Variables</i>	Raw coeff. (95% CI)	p	Adjusted coeff. (95% CI)	p
Mean maternal age in years, 1-year increase	0.15 (0.11; 0.20)	<0.001	0.00 (-0.02; 0.02)	0.8
Mean gestational age at delivery, 1-week increase	-0.58 (-0.71; -0.44)	<0.001	0.01 (-0.11; 0.13)	0.9
Gravidity				
- Primigravidae (ref. cat.)	0	--	--	--
- Multigravidae	1.64 (1.03; 2.26)	<0.001	--	--
- Grand-multigravidae	3.88 (2.60; 5.17)	<0.001	--	--
Gravidity, 1-category increase	0.72 (0.52; 0.92)	<0.001	--	--
Parity				
- Nulliparous women (ref. cat.)	0	--	0	--
- Primiparous women	1.84 (1.15; 2.53)	<0.001	0.03 (-0.38; 0.45)	0.9
- Multiparous women	2.02 (1.47; 2.58)	<0.001	-0.07 (-0.32; 0.19)	0.6
Parity, 1-category increase	0.65 (0.44; 0.85)	<0.001	0.03 (-0.13; 0.19)	0.7
Number of prior cesarean sections				
- None (ref. cat.)	0	--	--	--
- 1 prior CS	1.80 (1.12; 2.48)	<0.001	--	--
- 2 prior CS	2.11 (1.50; 2.72)	<0.001	--	--
- ≥3 prior CS	1.87 (1.16; 2.58)	<0.001	--	--
N of prior CS, 1-unit increase	0.65 (0.44; 0.86)	<0.001	--	--
Placenta accreta spectrum disorders				
- PAS0 (ref. cat.)	0	--	0	--
- PAS1	3.02 (2.59; 3.44)	<0.001	2.58 (1.65; 3.52)	<0.001
- PAS2	2.51 (1.89; 3.13)	<0.001	1.95 (1.03; 2.87)	<0.001
- PAS3	4.02 (3.65; 4.40)	<0.001	3.63 (2.25; 5.00)	<0.001
PAS, 1-category increase	1.35 (1.21; 1.49)	<0.001	0.83 (0.46; 1.27)	<0.001
Hystopathological diagnosis				
- Placenta previa without PAS (ref.cat.)	0	--	--	--
- Placenta accreta	3.29 (2.74; 3.83)	<0.001	--	--
- Placenta increta	2.63 (1.99; 3.27)	<0.001	--	--
- Placenta percreta	3.68 (3.23; 4.03)	<0.001	--	--
Hystopathological diagnosis, 1-category increase	1.23 (1.10; 1.36)	<0.001	--	--
Blood loss, 100mL-increase	0.26 (0.21; 0.31)	<0.001	-0.05 (-0.14; 0.03)	0.2
Red blood cells transfused, 1-Unit increase	0.57 (0.46; 0.68)	<0.001	-0.09 (-0.33; 0.14)	0.4
Platelets transfused, 1-Unit increase	0.53 (0.36; 0.69)	<0.001	-0.12 (-0.33; 0.10)	0.3
Fresh frozen plasma transfused, 1-Unit increase	0.65 (0.54; 0.76)	<0.001	0.34 (0.07; 0.62)	0.015
Comorbidities, yes vs no	0.39 (-1.49; 2.28)	0.7	0.65 (-0.20; 1.49)	0.13
General vs epidural anesthesia	2.18 (1.10; 3.26)	<0.001	-0.54 (-1.59; 0.51)	0.3
Length of surgical time, 10-minute increase	0.27 (0.25; 0.30)	<0.001	0.05 (-0.02; 0.13)	0.17
Surgical complications, yes vs no	2.87 (1.94; 3.80)	<0.001	0.69 (-0.89; 2.28)	0.4
Admission to intensive care unit, yes vs no	2.53 (1.53; 3.53)	<0.001	-0.19 (-1.08; 0.71)	0.7

PAS = Placenta accreta spectrum disorders; CS = Cesarean section; CI = Confidence Interval; coeff = coefficient; ref. cat. = reference category. Due to a high degree of collinearity across gravidity, number of previous cesarean sections and parity, only the latter covariate was reported in the final multivariate model. Similarly, hystopathological diagnosis and PAS grade were highly collinear, thus only the latter was reported in the final model.

Supplementary Table 7. Univariate analyses evaluating the relationship between all recorded variables and: (1) presence of surgical complications and (2) admission to Intensive Care Unit.

<i>Variables</i>	Surgical complications (n=19)	p *	Admission to ICU (n=17)	p *
Mean maternal age in years (SD)	35.5 (2.9)	0.002	35.2 (4.0)	0.007
Mean gestational age at delivery (SD)	33.9 (2.2)	<0.001	34.3 (1.3)	0.001
Gravidity, %				
- Primigravidae	0.0	--	0.0	--
- Multigravidae	84.2	0.5	70.6	0.6
- Grand-multigravidae	15.8	0.5	29.4	0.2
Parity, %				
- Nulliparous women	0.0	--	0.0	--
- Primiparous women	26.3	0.7	5.9	0.7
- Multiparous women	73.7	0.09	94.1	<0.001
Number of prior cesarean sections, %				
- None	0.0	--	0.0	--
- 1 prior CS	26.3	0.8	5.9	0.7
- 2 prior CS	36.8	0.8	52.9	0.19
- ≥3 prior CS	36.8	0.2	41.2	0.14
Placenta accreta spectrum disorders, %				
- PAS0	0.0	--	0.0	--
- PAS1	0.0	--	0.0	--
- PAS2	21.1	0.3	0.0	--
- PAS3	78.9	<0.001	100	--
Hystopathological diagnosis, %				
- Placenta previa without PAS	0.0	--	0.0	--
- Placenta accreta	0.0	--	0.0	--
- Placenta increta	0.0	--	0.0	--
- Placenta percreta	100	--	100	--
Presence of comorbidities, %	0.0	0.5	0.0	0.6
Anesthesia, %				
- General	31.6	0.14	1.7	0.5
- Peridural	68.4	<0.001	82.3	0.04
Mean estimated blood loss in mL (SD)	1500 (659)	<0.001	1171 (282)	<0.001
Mean Units of red blood cells transfused (SD)	3.9 (1.6)	<0.001	4.2 (2.6)	<0.001
Mean Units of fresh frozen plasma transfused (SD)	3.5 (2.6)	<0.001	3.3 (2.7)	<0.001
Mean Units of platelets transfused (SD)	2.0 (0.6)	<0.001	1.9 (0.6)	<0.001
Mean surgical time in minutes (SD)	179 (34)	<0.001	194 (27)	<0.001
Mean length of in-hospital stay in days (SD)	7.5 (3.0)	<0.001	7.2 (1.4)	<0.001
Surgical complications, %	--	--	0.0	0.2
Neonatal complications, %	0.0	0.7	0.0	0.8

PAS = Placenta accreta spectrum disorders; CS = Cesarean sections; SD = Standard deviation; ICU = Intensive Care Unit.

* Chi-squared test for categorical variables; t-test and Kruskal-Wallis test for normally distributed and non-normally distributed continuous variables, respectively. All p-values are referred to the comparison between the women with or without the selected outcome: e.g. those with versus without any surgical complication. Given that a relatively low proportion of women had a surgical complication, or were admitted to ICU, the remaining part of the sample was very similar to the overall sample, and its values were thus not reported to avoid redundancy.

Supplementary Table 8. Logistic regression models evaluating the potential predictors of: (1) surgical complications; (2) admissions to Intensive Care Units.

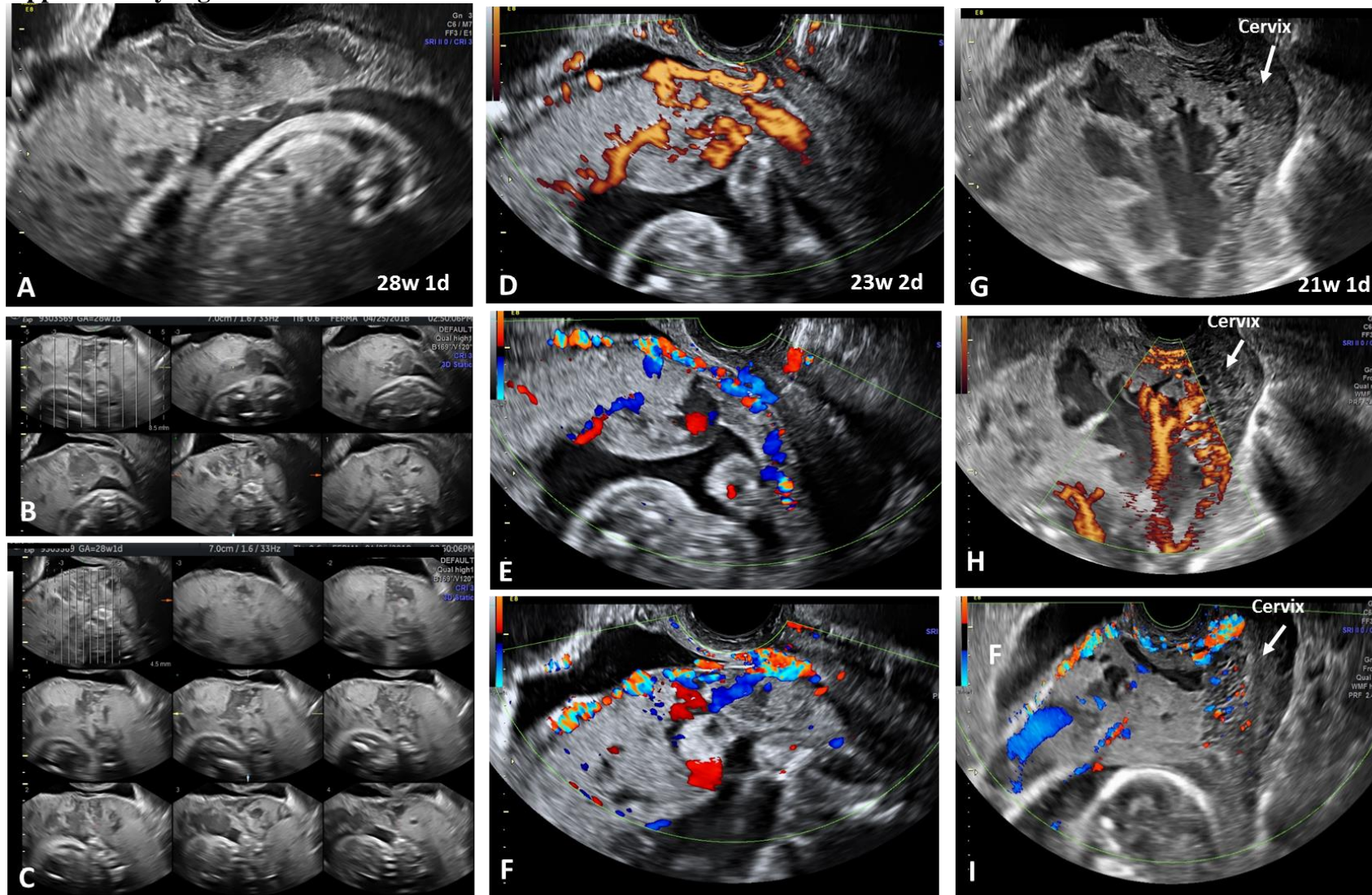
<i>Variables</i>	Surgical complications	p	Admission to ICU	p
	OR (95% CI)		OR (95% CI)	
Maternal age, 1-year increase	1.01 (0.86-1.9=67)	0.9	1.06 (0.94-1.19)	0.4
PAS, 1-category increase ^A	3.14 (1.36-7.25)	0.007	-- ^B	--
Parity, 1-category increase	1.19 (0.69-2.08)	0.5	2.23 (1.35-3.68)	0.002
Estimated blood loss, 100-mL increase	1.14 (1.02-1.30)	0.03	1.11 (1.02-1.23)	0.02

OR = Odds ratio; CI = Confidence interval; ICU = Intensive Care Unit; PAS = Placenta accreta spectrum disorders.

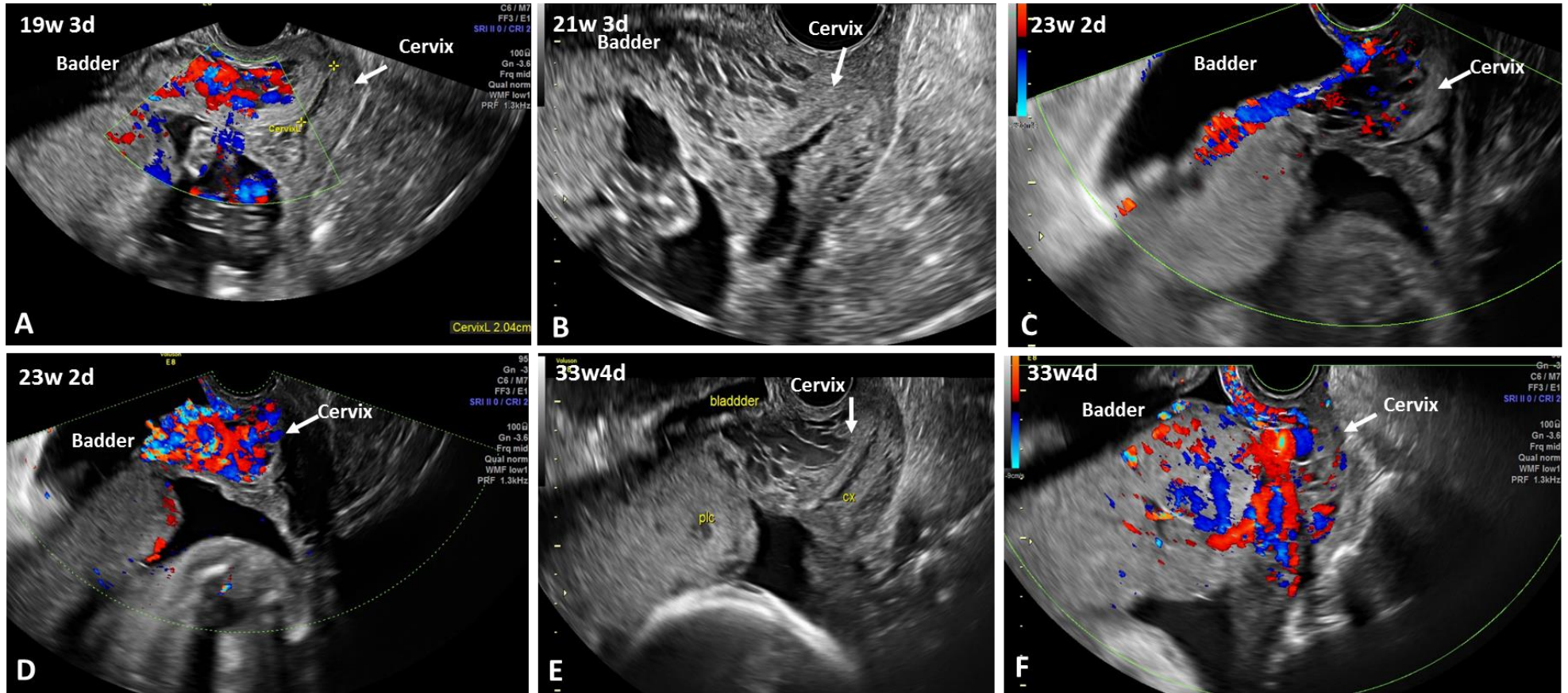
Area under the ROC curve (AUC) model 1 = 0.92; AUC model 2 = 0.87

^B PAS<3 predicted failures perfectly, thus was omitted from the final model.

Supplementary Figure 1:



Supplementary Figure 2



Supplementary Figure 3

