

THE LANCET

Healthy Longevity

Supplementary appendix

This appendix formed part of the original submission and has been peer reviewed. We post it as supplied by the authors.

Supplement to: Jeffery-Smith A, Rowland TAJ, Patel M, et al. Reinfection with new variants of SARS-CoV-2 after natural infection: a prospective observational cohort in 13 care homes in England. *Lancet Healthy Longev* 2021; **2**: e811–19.

Supplementary appendix

Re-infection with new variants of SARS-CoV-2 following natural infection: a prospective observational cohort, April 2020 to January 2021, England, UK

Anna Jeffery-Smith, Thomas AJ Rowland, Monika Patel, Heather Whitaker, Nalini Iyanger, Sarah V. Williams, Rebecca Giddings, Leah Thompson, Maria Zavala, Felicity Aiano, Joanna Ellis, Angie Lackenby, Katja Höschler, Kevin Brown, Mary E. Ramsay, Robin Gopal, J. Yimmy Chow, Shamez N. Ladhani, Maria Zambon.

Contents

Supplementary Table 1: Cohort demographics at each stage of follow up.....	2
Supplementary Table 2: Assessment of protective effectiveness separately by resident / staff status.....	3
Supplementary Table 3: Test of linearity of Schoenfeld residuals over time	3
Supplementary Figure 1: Age and sex distribution for each stage of the cohort.....	4
Supplementary figure 2: Kaplan Meier plots of SARS-CoV-2 PCR positivity by serostatus and prior PCR status.....	5
Supplementary Figure 3: Orf1ab SARS-CoV-2 RT-PCR cycle threshold values for primary and reinfection cases	6
Supplementary Figure 4: Assessment of Cox model proportional hazards assumption.....	7

Group		Number	Age (years) median (inter- quartile range)	Sex (Number of Females)	Mean Number of PCRs/person	Mean Number of Serology/per person
Complete	Staff	933	48.5 (38 – 57.1)	764	13.8	1.7
	Residents	692	86.8 (80 – 92)	487	11.2	1.8
Follow Up	Staff	810	48.8 (39.2 – 57.4)	667	15.5	1.7
	Residents	567	86.7 (80.4 – 91.6)	394	13.1	1.9
PCR cohort	Staff	786	48.7 (39.2 – 57.4)	651	15.9	1.7
	Residents	566	86.7 (80.4 – 91.6)	394	13.1	1.9
Serology cohort	Staff	712	48.7 (38.8 – 57.3)	587	16.0	1.7
	Residents	459	86.8 (81.2 – 91.6)	322	13.9	2.0
Possible reinfections	Staff	13	40.4 (29.7 – 44.1)	9	13.5	2.4
	Residents	10	84.8 (83.6 – 88.9)	7	12.4	2.6
Confirmed reinfections	Staff	5	37.6 (29.7 – 40.2)	4	15.2	3.2
	Residents	5	87.9 (84.3 – 95.6)	5	10.6	2.6

Supplementary Table 1: Cohort demographics at each stage of follow up.

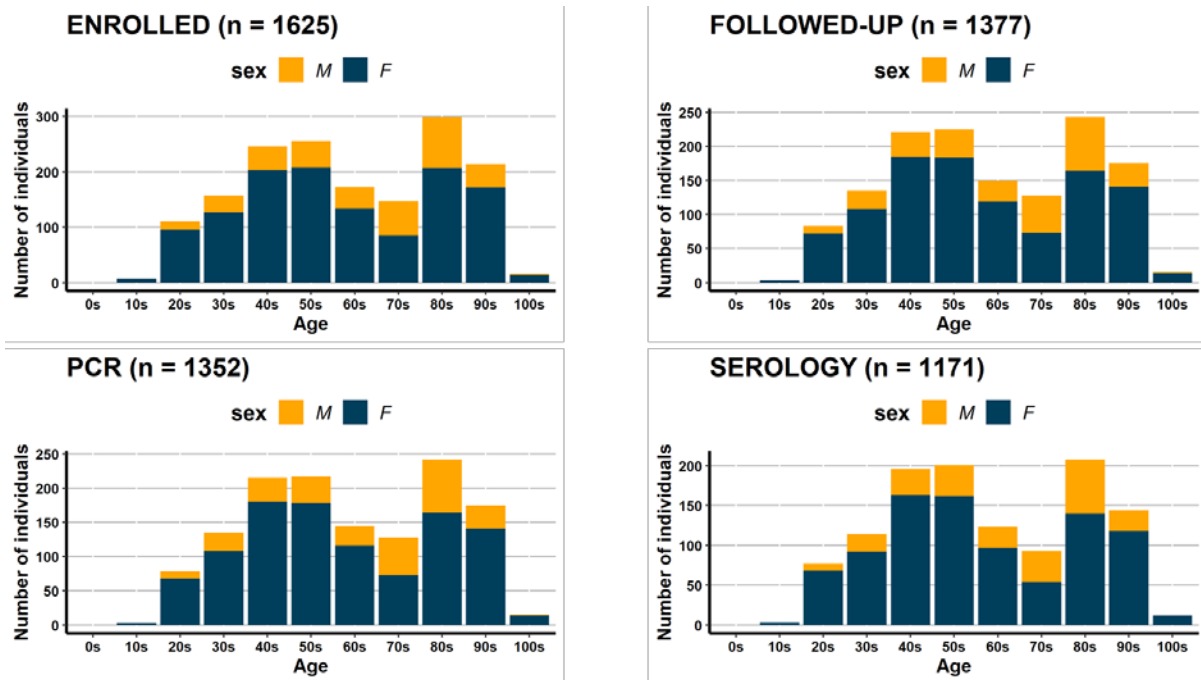
	N events	Person-time (days)	Cox model		Poisson regression	
			HR (95% CI)	% protection (100x(1-HR))	RR (95% CI)	% protection (100x(1-RR))
Residents only						
Susceptible	88	30049				
History of infection	5	46709	0.04 (0.02 - 0.11)	95.8% (88.7 - 98.4%)	0.04 (0.02 - 0.11)	95.9% (88.9 - 98.5%)
Staff only						
Susceptible	77	57082				
History of infection	5	56848	0.09 (0.03 - 0.24)	91.0% (75.9 - 96.7%)	0.08 (0.03 - 0.21)	91.8% (78.6 - 96.8%)

Supplementary Table 2: Assessment of protective effectiveness separately by resident / staff

status. HR – Hazard Ratio; RR – Relative Risk

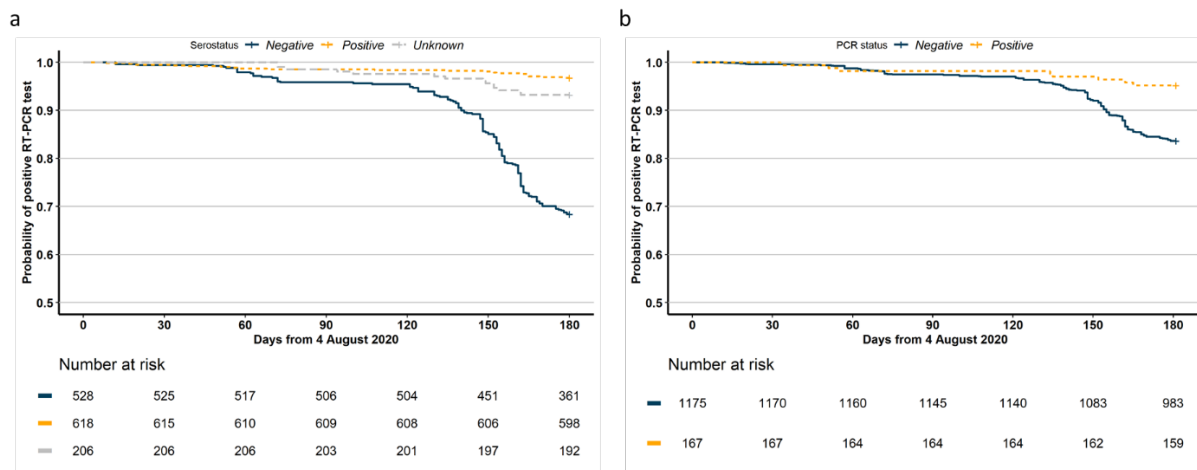
rho	Chi ²	df	Prob>chi ²
Susceptibility			
history of infection	0.34	1	0.5573
Role			
staff	0.11	1	0.7366
Gender			
M	1.53	1	0.2157
Age / period			
age 16-29, Aug-Sept	1.1	1	0.2939
age 16-29, Oct-Jan	0.04	1	0.85
age 30-69			
age 70+	0	1	0.9446
global test	4.45	6	0.6164

Supplementary Table 3: Test of linearity of Schoenfeld residuals over time



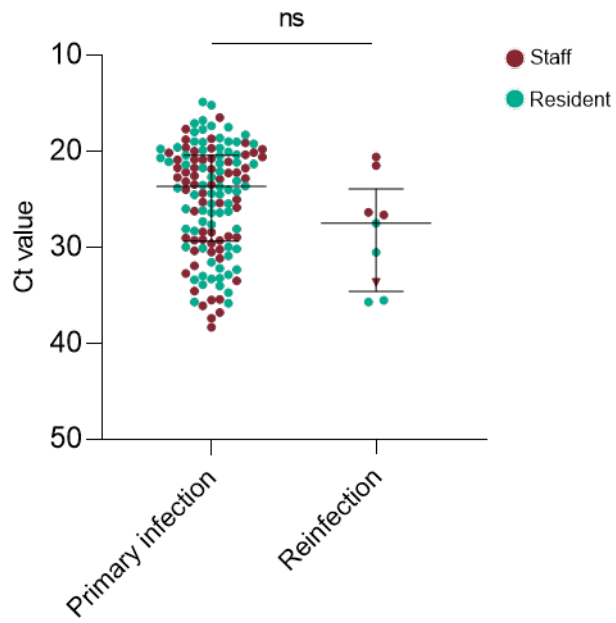
Supplementary Figure 1: Age and sex distribution for each stage of the cohort defined in Figure 1.

M: Male; F: Female.

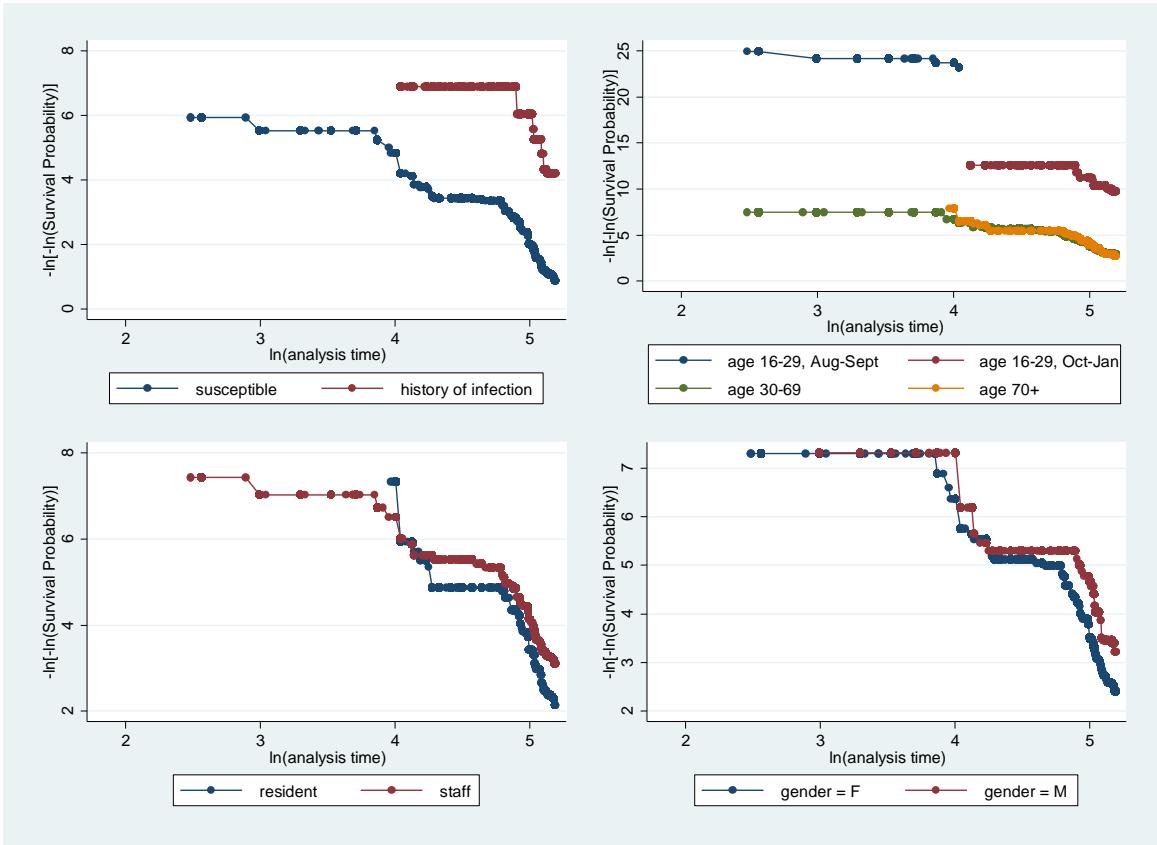


Supplementary figure 2: a) Kaplan Meier plot showing probability of SARS-CoV-2 RT-PCR positivity during the follow up period from 4 August 2020 in non-susceptible individuals based on T1 serological analysis (serostatus positive – yellow line), susceptible individuals (serostatus negative – blue line), and those with no previous serological results (unknown – grey line). Number of individuals at risk per subgroup over time is shown.

b) Kaplan Meier plot showing probability of SARS-CoV-2 RT-PCR positivity during the follow up period from 4 August 2020 in non-susceptible individuals based on T0 RT-PCR status: not susceptible (PCR positive – yellow line), susceptible (PCR negative – blue line). Number of individuals at risk per subgroup over time is shown.



Supplementary Figure 3: SARS-CoV-2 Orf1ab gene RT-PCR values from individuals with primary infection and reinfection during the same time period (September 2020 – January 2021). Statistical analysis using Mann-Whitney U Test, $p=0.056$. Bars indicate median and interquartile range.



Supplementary Figure 4: Assessment of Cox model proportional hazards assumption. Log-log plot of Survival (against infection/reinfection) for each of the variables included in the model. Note that models included stratification by care home, but plots are for all data together.