

**Genetic risk score Mendelian randomization shows obesity measured as body mass index, but not waist:hip ratio, is causal for endometrial cancer.**

Jodie N Painter<sup>1</sup>, Tracy A O'Mara<sup>1</sup>, Louise Marquart<sup>1</sup>, Penelope M Webb<sup>1</sup> for the AOCs Group, John Attia<sup>2,3</sup>, Sarah E Medland<sup>1</sup>, Timothy Cheng<sup>4</sup>, Joe Dennis<sup>5</sup>, Elizabeth G Holliday<sup>2,3</sup>, Mark McEvoy<sup>3</sup>, Rodney J Scott<sup>2,6-8</sup>, Shahana Ahmed<sup>9</sup>, Catherine S Healey<sup>9</sup>, Mitul Shah<sup>9</sup>, Maggie Gorman<sup>4</sup>, Lynn Martin<sup>4</sup>, Shirley Hodgson<sup>10</sup>, Matthias W Beckmann<sup>11</sup>, Arif B Ekici<sup>12</sup>, Peter A Fasching<sup>11,13</sup>, Alexander Hein<sup>11</sup>, Matthias Rübner<sup>11</sup>, Kamila Czene<sup>14</sup>, Hatef Darabi<sup>14</sup>, Per Hall<sup>14</sup>, Jingmei Li<sup>14</sup>, Thilo Dörk<sup>15</sup>, Matthias Dürst<sup>16</sup>, Peter Hillemanns<sup>17</sup>, Ingo Runnebaum<sup>16</sup>, Frederic Amant<sup>18</sup>, Daniela Annibali<sup>18</sup>, Jeroen Depreeuw<sup>18-20</sup>, Diether Lambrechts<sup>19,20</sup>, Patrick Neven<sup>18</sup>, Julie M Cunningham<sup>21</sup>, Sean C Dowdy<sup>22</sup>, Ellen L Goode<sup>23</sup>, Brooke L Fridley<sup>24</sup>, Stacey J Winham<sup>23</sup>, Tormund S Njølstad<sup>25,26</sup>, Helga B Salvesen<sup>25,26</sup>, Jone Trovik<sup>25,26</sup>, Henrica MJ Werner<sup>25,26</sup>, Katie Ashton<sup>2,7,8</sup>, Geoffrey Otton<sup>27</sup>, Tony Proietto<sup>27</sup>, Miriam Mints<sup>28</sup> and Emma Tham<sup>29,30</sup> for RENDOCAS, Manjeet K Bolla<sup>5</sup>, Kyriaki Michailidou<sup>5</sup>, Qin Wang<sup>5</sup>, Jonathan P Tyrer<sup>9</sup>, John L Hopper<sup>31</sup>, Julian Peto<sup>32</sup>, Anthony J Swerdlow<sup>33,34</sup>, Barbara Burwinkel<sup>35,36</sup>, Hermann Brenner<sup>37-39</sup>, Alfons Meindl<sup>40</sup>, Hiltrud Brauch<sup>39,41,42</sup>, Annika Lindblom<sup>29</sup>, Jenny Chang-Claude<sup>43,44</sup>, Fergus J Couch<sup>21,23</sup>, Graham G Giles<sup>31,45,46</sup>, Vessela N Kristensen<sup>47-49</sup>, Angela Cox<sup>50</sup>, Paul D P Pharoah<sup>9</sup>, Ian Tomlinson<sup>4</sup> for the National Study of Endometrial Cancer Genetics Group (NSECg), Alison M Dunning<sup>9</sup>, Douglas F Easton<sup>5,9</sup>, Deborah J Thompson<sup>5\*</sup>, Amanda B Spurdle<sup>1\*</sup> for the Australian National Endometrial Cancer Study Group (ANECS).

<sup>1</sup> Department of Genetics and Computational Biology, QIMR Berghofer Medical Research Institute, Brisbane, QLD, 4006, Australia.

<sup>2</sup> Hunter Medical Research Institute, John Hunter Hospital, Newcastle, NSW, 2305, Australia.

<sup>3</sup> Centre for Clinical Epidemiology and Biostatistics, School of Medicine and Public Health, University of Newcastle, NSW, 2305, Australia.

<sup>4</sup> Wellcome Trust Centre for Human Genetics, University of Oxford, Oxford, OX3 7BN, UK.

<sup>5</sup> Centre for Cancer Genetic Epidemiology, Department of Public Health and Primary Care, University of Cambridge, Cambridge, CB1 8RN, UK.

<sup>6</sup> Hunter Area Pathology Service, John Hunter Hospital, Newcastle, NSW, 2305, Australia.

<sup>7</sup> Centre for Information Based Medicine, University of Newcastle, NSW, 2308, Australia.

- <sup>8</sup> School of Biomedical Sciences and Pharmacy, University of Newcastle, Newcastle, NSW, 2308, Australia.
- <sup>9</sup> Centre for Cancer Genetic Epidemiology, Department of Oncology, University of Cambridge, Cambridge, CB1 8RN, UK.
- <sup>10</sup> Department of Clinical Genetics, St George's, University of London, London, SW17 0RE, UK.
- <sup>11</sup> Department of Gynecology and Obstetrics, University Hospital Erlangen, Friedrich-Alexander University Erlangen-Nuremberg, Erlangen, 91054, Germany.
- <sup>12</sup> Institute of Human Genetics, University Hospital Erlangen, Friedrich-Alexander-University Erlangen-Nuremberg, Erlangen, 91054, Germany.
- <sup>13</sup> University of California at Los Angeles, Department of Medicine, Division of Hematology/Oncology, David Geffen School of Medicine, Los Angeles, CA, 90095, USA.
- <sup>14</sup> Department of Medical Epidemiology and Biostatistics, Karolinska Institutet, Stockholm, SE-171 77, Sweden.
- <sup>15</sup> Hannover Medical School, Gynaecology Research Unit, Hannover, 30625, Germany.
- <sup>16</sup> Department of Gynaecology, Jena University Hospital - Friedrich Schiller University, Jena, 07743, Germany.
- <sup>17</sup> Hannover Medical School, Clinics of Gynaecology and Obstetrics, Hannover, 30625, Germany.
- <sup>18</sup> Department of Obstetrics and Gynecology, Division of Gynecologic Oncology, University Hospitals, KU Leuven - University of Leuven, 3000, Belgium.
- <sup>19</sup> Vesalius Research Center, VIB, Leuven, 3000, Belgium.
- <sup>20</sup> Laboratory for Translational Genetics, Department of Oncology, University Hospitals Leuven, Leuven, 3000, Belgium.
- <sup>21</sup> Department of Laboratory Medicine and Pathology, Mayo Clinic, Rochester, MN, 55905, USA.
- <sup>22</sup> Department of Obstetrics and Gynecology, Division of Gynecologic Oncology, Mayo Clinic, Rochester, MN, 55905, USA.
- <sup>23</sup> Department of Health Sciences Research, Mayo Clinic, Rochester, MN, 55905, USA.
- <sup>24</sup> Department of Biostatistics, University of Kansas Medical Center, Kansas City, KS, 66160, USA.
- <sup>25</sup> Centre for Cancerbiomarkers, Department of Clinical Science, The University of Bergen, 5020, Norway.
- <sup>26</sup> Department of Obstetrics and Gynecology, Haukeland University Hospital, Bergen, 5021, Norway.

- <sup>27</sup> School of Medicine and Public Health, University of Newcastle, Newcastle, NSW, 2308, Australia.
- <sup>28</sup> Department of Women's and Children's Health, Karolinska Institutet, Karolinska University Hospital, Stockholm, SE-171 77, Sweden.
- <sup>29</sup> Department of Molecular Medicine and Surgery, Karolinska Institutet, Stockholm, SE-171 77, Sweden.
- <sup>30</sup> Clinical Genetics, Karolinska University Hospital Solna, Stockholm, SE-17176 77, Sweden.
- <sup>31</sup> Centre for Epidemiology and Biostatistics, Melbourne School of Population and Global Health, The University of Melbourne, Vic, 3010, Australia.
- <sup>32</sup> London School of Hygiene and Tropical Medicine, London, WC1E 7HT, UK.
- <sup>33</sup> Division of Genetics and Epidemiology, Institute of Cancer Research, London, SM2 5NG, UK.
- <sup>34</sup> Division of Breast Cancer Research, Institute of Cancer Research, London, SM2 5NG, UK.
- <sup>35</sup> Molecular Biology of Breast Cancer, Department of Gynecology and Obstetrics, University of Heidelberg, Heidelberg, 69120, Germany.
- <sup>36</sup> Molecular Epidemiology Group, German Cancer Research Center, DKFZ, Heidelberg, 69120, Germany.
- <sup>37</sup> Division of Clinical Epidemiology and Aging Research, German Cancer Research Center (DKFZ), Heidelberg, 69120, Germany.
- <sup>38</sup> Division of Preventive Oncology, German Cancer Research Center (DKFZ) and National Center for Tumor Diseases (NCT), Heidelberg, 69120, Germany
- <sup>39</sup> German Cancer Consortium (DKTK), German Cancer Research Center (DKFZ), Heidelberg, 69120, Germany
- <sup>40</sup> Department of Obstetrics and Gynecology, Division of Tumor Genetics, Technical University of Munich, Munich, 80333, Germany.
- <sup>41</sup> Dr. Margarete Fischer-Bosch-Institute of Clinical Pharmacology, Stuttgart, 70376, Germany.
- <sup>42</sup> University of Tübingen, Tübingen, 72074, Germany
- <sup>43</sup> Division of Cancer Epidemiology, German Cancer Research Center (DKFZ), Heidelberg, 69120, Germany.
- <sup>44</sup> University Cancer Center Hamburg (UCCH), University Medical Center Hamburg-Eppendorf, Hamburg, 20246, Germany
- <sup>45</sup> Cancer Epidemiology Centre, Cancer Council Victoria, Melbourne, Vic, 3004, Australia.
- <sup>46</sup> Department of Epidemiology and Preventive Medicine, Monash University, Melbourne, Vic, 3004, Australia.

<sup>47</sup> Department of Genetics, Institute for Cancer Research, The Norwegian Radium Hospital, Oslo, 0310, Norway.

<sup>48</sup> The K.G. Jebsen Center for Breast Cancer Research, Institute for Clinical Medicine, Faculty of Medicine, University of Oslo, Oslo, 0316, Norway .

<sup>49</sup> Department of Clinical Molecular Oncology, Division of Medicine, Akershus University Hospital, Lørenskog, 1478, Norway.

<sup>50</sup> Sheffield Cancer Research, Department of Oncology, University of Sheffield, Sheffield, S10 2RX, UK.

***Running Title:*** Endometrial cancer risk and risk score analysis of BMI & WHR

***Keywords:*** endometrial cancer; genetic predisposition, risk score analysis, pleiotropy

***Financial Support:*** The iCOGS endometrial cancer analysis was supported by NHMRC project grant [ID#1031333] to ABS, DFE and AMD. ABS and PW are supported by the NHMRC Fellowship scheme. IT is supported by Cancer Research UK and the Oxford Comprehensive Biomedical Research Centre. THTC is supported by the Rhodes Trust and the Nuffield Department of Medicine. Funding for the iCOGS infrastructure came from: the European Community's Seventh Framework Programme under grant agreement no 223175 [HEALTH-F2-2009-223175] [COGS], Cancer Research UK [C1287/A10118, C1287/A10710, C12292/A11174, C1281/A12014, C5047/A8384, C5047/A15007, C5047/A10692, C8197/A16565], the National Institutes of Health [CA128978] and Post-Cancer GWAS initiative [1U19 CA148537, 1U19 CA148065 and 1U19 CA148112 - the GAME-ON initiative], the Department of Defence [W81XWH-10-1-0341], the Canadian Institutes of Health Research [CIHR] for the CIHR Team in Familial Risks of Breast Cancer, Komen

Foundation for the Cure, the Breast Cancer Research Foundation, and the Ovarian Cancer Research Fund.

ANECs recruitment was supported by project grants from the NHMRC [ID#339435], The Cancer Council Queensland [ID#4196615] and Cancer Council Tasmania [ID#403031 and ID#457636]. SEARCH recruitment was funded by a programme grant from Cancer Research UK [C490/A10124]. Stage 1 and stage 2 case genotyping was supported by the NHMRC [ID#552402, ID#1031333]. This study makes use of data generated by the Wellcome Trust Case-Control Consortium (WTCCC). A full list of the investigators who contributed to the generation of the data is available from [www.wtccc.org.uk](http://www.wtccc.org.uk). Funding for the project was provided by the Wellcome Trust under award 076113. We acknowledge use of DNA from the British 1958 Birth Cohort collection, funded by the Medical Research Council grant G0000934 and the Wellcome Trust grant 068545/Z/02 - funding for this project was provided by the Wellcome Trust under award 085475. NSECG was supported by the EU FP7 CHIBCHA grant, Wellcome Trust Centre for Human Genetics Core Grant 090532/Z/09Z, and CORGI was funded by Cancer Research UK. Recruitment of the QIMR Berghofer controls was supported by the NHMRC. The University of Newcastle, the Gladys M Brawn Senior Research Fellowship scheme, The Vincent Fairfax Family Foundation, the Hunter Medical Research Institute and the Hunter Area Pathology Service all contributed towards the costs of establishing the Hunter Community Study.

The Bavarian Endometrial Cancer Study (BECS) was partly funded by the ELAN fund of the University of Erlangen. The Leuven Endometrium Study (LES) was supported by the Verelst Foundation for endometrial cancer. The Mayo Endometrial Cancer Study (MECS) and Mayo controls (MAY) were supported by grants from the National Cancer Institute of United States Public Health Service [R01 CA122443, P30 CA15083, P50 CA136393, and GAME-ON the

NCI Cancer Post-GWAS Initiative U19 CA148112], the Fred C and Katherine B Andersen Foundation, the Mayo Foundation, and the Ovarian Cancer Research Fund with support of the Smith family, in memory of Kathryn Sladek Smith. MoMaTEC received financial support from a Helse Vest Grant, the University of Bergen, Melzer Foundation, The Norwegian Cancer Society (Harald Andersens legat), The Research Council of Norway and Haukeland University Hospital. The Newcastle Endometrial Cancer Study (NECS) acknowledges contributions from the University of Newcastle, The NBN Children's Cancer Research Group, Ms Jennie Thomas and the Hunter Medical Research Institute.

RENDOCAS was supported through the regional agreement on medical training and clinical research (ALF) between Stockholm County Council and Karolinska Institutet [numbers: 20110222, 20110483, 20110141 and DF 07015], The Swedish Labor Market Insurance [number 100069] and The Swedish Cancer Society [number 11 0439]. The Cancer Hormone Replacement Epidemiology in Sweden Study (CAHRES, formerly called The Singapore and Swedish Breast/Endometrial Cancer Study; SASBAC) was supported by funding from the Agency for Science, Technology and Research of Singapore (A\*STAR), the US National Institutes of Health and the Susan G. Komen Breast Cancer Foundation.

The Breast Cancer Association Consortium (BCAC) is funded by Cancer Research UK [C1287/A10118, C1287/A12014]. The Ovarian Cancer Association Consortium (OCAC) is supported by a grant from the Ovarian Cancer Research Fund thanks to donations by the family and friends of Kathryn Sladek Smith [PPD/RPCI.07], and the UK National Institute for Health Research Biomedical Research Centres at the University of Cambridge. Additional funding for individual control groups is detailed in the Supplementary Information.

**Corresponding authors:** Amanda B. Spurdle, QIMR Berghofer Medical Research Institute, 300 Herston Rd, Herston, 4006, Queensland, Australia (email:

[Amanda.Spurdle@qimrberghofer.edu.au](mailto:Amanda.Spurdle@qimrberghofer.edu.au));

Deborah J. Thompson, Centre for Cancer Genetic Epidemiology, Department of Public Health and Primary Care, University of Cambridge, Cambridge, CB1 8RN, UK. (email:

[djt25@medschl.cam.ac.uk](mailto:djt25@medschl.cam.ac.uk))

**Disclosure Statement:** P.A. Fasching is a consultant for Novartis, Pfizer, Roche and Genomic Health. No potential conflicts of interest were disclosed by the other authors.

**Word Count:** 3530

**Number of Figures and Tables:** 1 Figure, 5 Tables.

**Manuscript also includes Supplementary Text:** 4 Supplementary Figures, 4 Supplementary Tables

## Abstract

**Background:** The strongest known risk factor for endometrial cancer (EC) is obesity. To determine whether single nucleotide polymorphisms (SNPs) associated with increased body mass index (BMI) or waist-hip ratio (WHR) are associated with EC risk, independent of measured BMI, we investigated relationships between 77 BMI and 47 WHR SNPs and EC in 6,609 cases and 37,926 country-matched controls.

**Methods:** Logistic regression analysis and fixed-effects meta-analysis were used to test for associations between EC risk and (i) individual BMI or WHR SNPs, (ii) a combined weighted genetic risk score (wGRS) for BMI or WHR. Causality of BMI for EC was assessed using Mendelian randomization, with BMIwGRS as instrumental variable.

**Results:** The BMIwGRS was significantly associated with EC risk ( $P=3.4\times 10^{-17}$ ). Scaling the effect of the BMIwGRS on EC risk by its effect on BMI, the EC odds ratio (OR) per  $5\text{kg}/\text{m}^2$  of genetically predicted BMI was 2.06 (95% confidence interval (CI)=1.89-2.21), larger than the observed effect of BMI on EC risk (OR=1.55, 95% CI 1.44-1.68, per  $5\text{kg}/\text{m}^2$ ). The association attenuated but remained significant after adjusting for BMI (OR=1.22, 95% CI=1.10-1.39,  $P=5.3\times 10^{-4}$ ). There was evidence of directional pleiotropy ( $P=1.5\times 10^{-4}$ ). BMI SNP rs2075650 was associated with EC at study-wide significance ( $P<4.0\times 10^{-4}$ ), independent of BMI. EC was not significantly associated with individual WHR SNPs or the WHRwGRS.

**Conclusions:** BMI, but not WHR, is causally associated with EC risk, with evidence that some BMI-associated SNPs alter EC risk via mechanisms other than measurable BMI.

**Impact:** The causal association between BMI SNPs and EC has possible implications for EC risk modeling.



## Introduction

Endometrial cancer (EC: cancer of the lining of the uterine corpus) is the fourth most diagnosed cancer in European and North American women (1). Endometrial tumors are typically classified into two etiological types (2): hormonally driven Type 1, usually low grade endometrioid histology with ‘good’ prognosis (~80% of cases), and Type 2, non-endometrioid, largely serous or clear cell histologies with poorer prognosis. Overall, the strongest known risk factor is obesity (3), with every 5kg/m<sup>2</sup> increase in body mass index (BMI) increasing EC risk by up to 60% (4). Women with a BMI  $\geq 30$  kg/m<sup>2</sup> have a ~3-fold overall increased EC risk compared to non-obese women (BMI <25), increasing to an 8-fold risk in women with BMI  $\geq 40$  (5). Obesity is most commonly associated with endometrioid EC, and may also modestly increase the risk of non-endometrioid tumors (3, 6). Body fat distribution, measured as waist-hip ratio (WHR) or waist circumference (WC), may influence EC risk but the evidence is weaker (4, 7). Additionally, whether the WHR/WC associations are independent of BMI remains to be clarified.

Association studies assessing cancer risk with variants proven to be associated with obesity may inform our understanding of the biological relationship between obesity and cancer risk, and also identify variants/genetic loci that play a direct role in the etiology of obesity-associated cancers. Genome-wide association studies (GWAS) have now identified 97 loci associated with BMI and another 49 loci independently associated with WHR adjusted for BMI (8-11). Of these, a SNP in the *FTO* gene, in high linkage disequilibrium with obesity SNP rs1558902, is associated with a significantly increased risk of breast cancer (12), while combinations of BMI-associated variants summarised by a genetic risk score (GRS) have been associated with prostate and colorectal cancers (13, 14). A recent study of 3,376 European-ancestry EC cases and 3,867 controls found an association between a 97-SNP BMI

GRS and EC which disappeared after adjusting for BMI (15). However, a 26-SNP BMI GRS was found to be significantly associated with EC in Chinese cases and controls independently of measured BMI (16). The relationship between WHR-associated SNPs and EC is as yet unknown for any population.

We have investigated whether SNPs known to influence BMI (N=77) or WHR adjusted for BMI (N=47) in Europeans, are also associated with the risk of EC using a large sample of 6,609 EC cases and 37,926 controls. We present the results of our association analyses for each SNP individually, and combined as a weighted genetic risk score (wGRS) (17) for each adiposity measure. Further, we investigated possibly pleiotropy of BMI risk SNPs using a Mendelian Randomization approach with a test for heterogeneity among the causal estimates from the different SNPs.

## **Material and Methods**

### *Datasets*

We analyzed four datasets from separate studies contributing to the Endometrial Cancer Association Consortium (ECAC), as detailed previously (18, 19), and as summarized in **Supplementary Table 1**). The first three comprised GWAS datasets genotyped using Illumina genotyping arrays, from Australia (“ANECS/QIMR/HCS”: 606 cases, 3,083 controls), and the UK (“SEARCH/WTCCC”, 681 cases, 5,190 controls (18, 20)); “NSECG/CORGI”, 919 cases, 894 controls(19, 21)). The fourth dataset (“iCOGS”) was genotyped using the ‘iCOGs’ custom Illumina Infinium iSelect genotyping array comprising 211,155 SNPs chosen for follow-up and fine-mapping of hormonal cancer GWAS hits, and

included 4,402 cases recruited from 11 separate studies from 7 countries, and 28,758 controls from the same countries.

BMI information was available for subsets of cases and controls from the ANECS, SEARCH and iCOGS datasets (**Table 1, Supplementary Table 2**). Analyses that did not include BMI as a covariate included 6,609 cases and 37,296 controls; analyses including BMI as a covariate included 4,088 cases and 15,986 controls. The association between BMI and EC risk was assessed by meta-analysis of the ANECS, SEARCH and iCOGS datasets. There was modest evidence for heterogeneity ( $P_{\text{trend All cases}} I^2=73.4, P=0.02$ ), driven by a lower estimate for the SEARCH dataset, with little difference between a fixed effects and random effects model (presented in Table 1).

WHR information was available only for a subset of WTCCC controls (the 1958 Birth Cohort, N=1259); the association between WHR wGRS and WHR was confirmed in this subset of individuals. Analyses assessing the association between WHR wGRS and EC risk included all cases and controls.

#### *BMI and WHR SNP genotype imputation*

Our analyses included 77 SNPs recently validated as associated with BMI at a genome-wide level of significance ( $P < 5.0 \times 10^{-8}$ ) in a large-scale meta-analysis including 339,224 individuals of European ancestry from 125 separate studies conducted by the Genetic Investigation of Anthropomorphic Traits (GIANT) consortium (8, 9). Only SNPs significant in the primary analysis were included (*i.e.* we did not include SNPs significant only in secondary or conditional analyses, or in the analysis including other ancestries). Using the

same criteria, we included 47 SNPs associated with WHR after adjustment for BMI (WHRadjBMI) in a GIANT meta-analysis including 210,088 individuals from 101 studies (10, 11); 34 of these WHR SNPs had also reached genome-wide significance in analyses including only women (11). The BMI and WHR SNPs were non-overlapping. SNPs that were not directly genotyped on either the Illumina or iCOGS platforms were imputed to the 1000 Genomes dataset v3 (April 2012 release) using IMPUTE v2 (22) as described in (19). All target SNPs had imputation information scores  $>0.85$  across datasets and minor allele frequencies  $>0.05$ .

#### *Association of EC with individual BMI or WHR SNPs*

The four datasets were analysed separately using unconditional logistic regression with a per-allele (1 degree of freedom) model using SNPTEST v2 (23), adjusting for principal components of the genomic kinship matrix as described previously (18, 19). The GWAS datasets were each analysed as a single stratum, the iCOGS dataset was adjusted for eight strata (six defined by country, while the large UK dataset was divided into ‘SEARCH’ and ‘NSECG’). Given no indication for heterogeneity between studies, betas and their standard errors for each dataset were combined using standard fixed-effects meta-analyses across studies in METAL (24). All statistical tests were 2-sided.  $P$ -values  $<4.0 \times 10^{-4}$  (where  $P=0.05/124$ ) were considered significant.

#### *Association of EC with genetic risk scores for BMI and WHR*

We next tested for associations between EC and the wGRS for BMI and WHR. For each individual in the study, the number of trait-increasing alleles at each SNP (between 0 and 2)

was weighted by the reported effect size in the GIANT consortium meta-analysis (per-allele regression coefficient) on the relevant phenotype and then summed across SNPs

**(Supplementary Text)** (8-11). As most WHR-associated SNPs showed a significant difference in effect between the sexes, we calculated the WHRwGRS using the effect size as reported for women (11). The weighted contributions from all SNPs were summed to give a BMIwGRS and two different WHRwGRS for each individual (a 34-SNP WHRwGRS including only SNPs reaching genome-wide significance in women, and a 47 SNP WHRwGRS including all WHR-associated SNPs for which we had data).

Associations between the BMIwGRS and BMI and the WHRwGRS and WHR were determined by linear regression, and associations between the BMIwGRS, WHRwGRS and case-control status by logistic regression. These analyses were performed separately for each study, and results combined using random effects meta-analysis. Associations between each wGRS and EC were performed per GRS unit (continuous) and after stratifying into quartiles based on the distribution in controls. All wGRS analyses were performed using the R software package (<http://www.r-project.org/>) with two-sided *P*-values <0.05 considered significant.

Finally, we used Mendelian Randomization (MR), with BMIwGRS as the instrumental variable, to assess the causality of BMI for EC. We genetically predicted the effect of a 5kg/m<sup>2</sup> increase in BMI on EC risk by scaling the natural logarithm of the OR of EC per unit increase in the BMIwGRS on BMI. Using the MR approach, if BMI is causal for EC then the observed BMI OR for EC should be consistent with that predicted using the scaled BMIwGRS. A larger observed than predicted OR would suggest that at least part of the observed BMI-EC association is attributable to bias or confounding inflating the observed estimates. Conversely, a larger predicted than observed OR might indicate pleiotropy or bias

or confounding that has reduced the observed estimate towards the null. To formally test the MR assumption of no pleiotropy, we used the MR adaptation of Egger's test – a method originally developed for assessing small-study bias in meta-analysis (25). In this setting each point on the funnel plot represents the causal estimate derived from one BMI SNP, and we are testing whether the causal estimates from weaker SNPs (those less strongly associated with BMI) are skewed towards either high or low values, compared with stronger variants. We used Cochran's Q-test as a further test for heterogeneity in the causal estimates of the individual SNPs (where the analysis is over the 77 SNPs rather than over multiple studies, as would be more usual in a meta-analysis context), and used the result of this test to guide whether the best estimate of the causal effect of BMI on EC is the combined estimate from the fixed-effects or from the random-effects inverse-variance weighted meta-analysis of the per-SNP causal estimates.

## Results

There was evidence of association between EC and one BMI-associated SNP at  $P < 4.0 \times 10^{-4}$ ; SNP rs2075650 located within *TOMM40* on chromosome 19 (per allele OR=1.13, 95% CI 1.05-1.21,  $P = 2.4 \times 10^{-4}$ ) (**Supplementary Table 3**). The signal was similar in the subset of samples with BMI information (OR=1.18, 95% CI 1.10-1.26;  $P = 2.0 \times 10^{-4}$ ), and remained significant after including BMI as a covariate (OR=1.16, 95% CI 1.07-1.24,  $P = 3.7 \times 10^{-4}$ ). For the individual SNPs, there was a very modest positive correlation between the published effect on BMI and the estimated effect on EC risk (Pearson  $R = 0.26$ ,  $P = 0.02$ ), which was attenuated when only samples with BMI information were included (Pearson  $R = 0.19$ ,

$P=0.09$ ), and disappeared completely after conditioning on BMI (Pearson  $R=0.004$ ,  $P=0.96$ ) (**Supplementary Figure 1**).

There was also evidence for association with one WHR SNP, rs10842707 at the *ITPR2-SSPN* locus on chromosome 12 (OR=1.09, 95% CI 1.05-1.13,  $P=3.7 \times 10^{-4}$ ) (**Supplementary Table 4**), although this signal fell below our study-wide significance threshold after adjusting for BMI (OR=1.08, 95% CI 1.01-1.14,  $P=1.1 \times 10^{-2}$ ; unadjusted OR for the subset with BMI information was 1.07, 95% CI 1.01-1.13,  $P=2.4 \times 10^{-2}$ ). There was no obvious correlation between published effect sizes for WHR SNPs and EC risk (Pearson  $R=-0.19$ ,  $P=0.09$ ; **Supplementary Figure 2**).

As expected, self-reported BMI was highly significantly associated with EC risk overall, with an OR=1.55 (95% CI 1.44-1.68, per  $5\text{kg}/\text{m}^2$ ,  $P=1.8 \times 10^{-26}$ ) for every  $5\text{kg}/\text{m}^2$  increase in BMI (**Table 1**): ORs were somewhat greater for endometrioid (OR=1.56, 95% CI 1.42-1.72) HERE than non-endometrioid/mixed (OR=1.50, 95% CI 1.43-1.57) histologies. The association between BMI and the BMIwGRS was significant in both cases and controls (**Supplementary Figure 3**); overall each weighted allele (*i.e.* each unit increase in the BMIwGRS) was associated with a  $4.83\text{kg}/\text{m}^2$  increase in BMI, 95% CI 4.33-5.32,  $P=1.2 \times 10^{-81}$ , indicating the suitability of this score as an instrumental variable for BMI in our dataset (F statistic on a pooled analysis adjusting for study 587.7).

The BMIwGRS was significantly associated with EC risk in the entire dataset, with a per weighted allele OR=2.11 (95% CI 1.94-2.28,  $P=3.4 \times 10^{-17}$ ; **Table 2**). Scaling according to the magnitude of the effect of the score on BMI ( $\beta=4.83\text{kg}/\text{m}^2$ ), we find the EC OR per  $5\text{kg}/\text{m}^2$  of genetically predicted BMI to be 2.06 (95% CI 1.89-2.21) (**Figure 1**). This effect is apparently driven by an association with endometrioid disease (scaled OR=2.21, 95% CI 2.03-2.38,  $P=6.6 \times 10^{-12}$ ). The overall association was similar for the subset with BMI

information (scaled OR=2.18, 95% CI 1.96-2.41,  $P=4.2\times 10^{-12}$ ), and attenuated but remained significant after including BMI as a covariate in the model (scaled OR=1.22, 95% CI 1.12-1.34,  $P=5.3\times 10^{-4}$ ).

According to the Ptest, there was no significant evidence of directional pleiotropy ( $P=0.53$ ), despite some possible asymmetry in the funnel plot (**Supplementary Figure 4**). However, Cochran's Q-test did show some significant heterogeneity in the causal estimates from the individual SNPs ( $P=1.5\times 10^{-4}$ ), hence the causal effect of BMI on EC would be more appropriately estimated from the inverse-variance weighted random effects meta-analysis of the 77 BMI SNPs ( $P=1.8\times 10^{-9}$ ). Unfortunately, this effect estimate cannot be interpreted since the SNP-BMI regression coefficients presented by the GIANT consortium are for an inverse-normalised transformation of BMI, from which effects on the  $\text{kg/m}^2$  scale cannot be derived. Nevertheless, we note that the causal lnOR estimate from the random-effects analysis of individual SNPs is ~10% higher than that from the equivalent fixed-effects analysis (**Supplementary Figure 4**), thus we infer that the true causal effect of BMI on EC is slightly larger than our best estimate under the assumption of no directional pleiotropy i.e. OR >2.06 per  $5\text{kg/m}^2$  as predicted in our dataset. This is somewhat larger than the observed OR=1.55 (95% CI 1.44-1.68) per  $5\text{kg/m}^2$  of reported BMI in this dataset, and also larger than previously published estimates of the effect of reported BMI on EC in epidemiological studies (e.g. OR 1.54, 95% CI 1.47-1.61, per  $5\text{kg/m}^2$  (4); OR=1.57, 95% CI 1.54-1.61, per  $5\text{kg/m}^2$  for "Type1" largely endometrioid EC (3)).

Both WHRwGRS were significantly associated with WHR in the WTCCC control group (34-SNP WHRwGRS  $\beta=0.05$ , 95% CI 0.02-0.08,  $P=2.2\times 10^{-3}$ ; 47-SNP WHRwGRS  $\beta=0.05$ , 95% CI 0.03-0.08,  $P=1.8\times 10^{-4}$ ). As expected, neither WHRwGRS was associated with BMI ( $P=>0.80$ ). The results for the 34-SNP WHRwGRS were very similar to those from



secondary analyses using all 47 WHR SNPs, neither of which were significantly associated with EC risk (OR=1.02, 95% CI 0.99-1.04,  $P=0.09$  and OR=0.97, 95% CI 0.63-1.31,  $P=0.86$ , respectively) (**Table 3**), or with risk stratified by histology (data not shown).

## Discussion

In this study we assessed whether SNPs associated with increased BMI or WHR are also associated with increased EC risk, either individually or in combination, and whether these genetic associations are independent of BMI. While BMI is clearly recognized as a major risk factor for EC, the role of WHR, independent of BMI, is less clear. Most studies including WHR have reported evidence for an association with EC (4, 26-32) but only four presented analyses adjusting for BMI, suggesting the WHR-EC risk association was attenuated in Caucasians (29-31), but not in Asians (32).

Combined as a wGRS, the 77 BMI-associated SNPs were highly significantly associated with BMI, even though the BMIwGRS explained only ~1% of the variance in BMI in our sample (less than the estimated 2.7% of the variance in BMI explained by 97 BMI-associated SNPs across ancestries in the discovery dataset (9)). The BMIwGRS was also significantly associated with EC, explaining ~0.1% of the variance in risk and confirming the causal nature of the association between BMI and EC. Indeed, the association between genetically-predicted BMI (based on the 77 SNP BMIwGRS) and EC risk was somewhat larger than that between observed BMI (i.e. that calculated from self-reported height and weight) and EC risk, and we identified significant heterogeneity in the per-SNP causal estimates, both of which suggest some modest degree of directional pleiotropy. Furthermore, the overall association signal attenuated but did not disappear when adjusting for BMI (OR=1.22 vs 2.06 per  $5\text{kg/m}^2$  genetically predicted BMI), which also suggests that these SNPs mainly, but not

entirely, operate to increase EC risk via BMI. In particular, we note that one BMI SNP, rs2075650, was found to be associated with EC risk independent of BMI in our dataset.

Our result could also (or instead) suggest that the aspect of body composition most relevant for EC risk is only partially captured by BMI; although BMI is widely used as a convenient proxy measure for adiposity, it is by no means a perfect measure (33). One would expect that the SNPs identified to date in GWAS of BMI, at least on aggregate, are more strongly associated with adiposity than with its proxy, BMI. Hence the combined effect of the 77 BMI SNPs might be a better predictor of risk due to adiposity than BMI self-reported at a single time point (which could be subject to regression dilution). The effect of BMI on EC risk has been reported to be attenuated among ever users of hormone replacement therapy (HRT), as compared to never users (34). Although we were unable to stratify our analyses according to HRT use, we are confident that the difference between the effects of observed and genetically-predicted BMI on EC risk seen in our study is not attributable to an interaction between BMI and HRT use, since both analyses were based on the same set of women, and so will necessarily have included the same proportions of current, previous and never HRT users. However, the discrepancy between the observed and predicted effects of BMI on EC could theoretically point to negative confounding between measured BMI and EC, via HRT use and some other factor (e.g. socioeconomic status) associated with both higher BMI and less frequent HRT use.

The evidence for modest pleiotropy for BMI SNPs and EC risk has been reported previously in a study of Chinese women. A study of 26 SNPs then reported as (nominally) associated with different measures of obesity in GWAS datasets (35) identified a GRS-EC association in Chinese women (16), which attenuated but remained significant after adjusting for BMI.

Direct comparison to our findings is difficult, due to differences in SNP selection and

overlap, and also because the relationship between BMI and percentage body fat differs among ethnic groups (36). However, the results from our European-ancestry study contrast with those from another recent analysis of 3,376 European-ancestry EC cases and 3,867 controls from the E2C2 consortium (15); neither cases nor controls from the E2C2 analysis overlap with those presented here. While the E2C2 analysis also identified a significant association between a 97-SNP GRS and EC risk ( $P=0.002$ ), this association ablated after adjustment for BMI ( $P=0.78$ ). The differences in findings between the two European studies may possibly reflect the BMI profiles of the two studies; while the mean BMI of the controls did not differ between the two studies ( $P=0.11$ ), the mean BMI of cases in the E2C2 study was greater than that for cases in our study ( $P=0.017$ , mean difference of 0.43kg/m<sup>2</sup>). However, the differences are more likely to reflect the increased power of our larger study to detect modest effects. This is particularly pertinent to the single SNP findings. Although BMI SNP rs2075650 was found to be significantly associated with EC risk independent of BMI in our dataset (per allele OR of 1.13, 95% CI=1.05-1.21), this same SNP was not significantly associated with EC risk in the E2C2 analysis (15) ( $OR_{BMI-adjusted}= 1.00$ , 95% CI=0.90-1.10), although there was some overlap between the 95% CIs. We note also that we find no evidence in support of the E2C2 tentative finding of a protective effect on EC of the subset of five BMI-risk alleles at loci known to be involved in Monogenic Obesity Syndromes, with OR point estimates above unity observed for the four loci we investigated in our study (rs6567160, *MC4R*, OR 1.02 (0.98-1.06),  $P=0.3$ ; rs11030104, *BDNF*, OR 1.05 (1.01-1.09),  $P=0.05$ ; rs10182181, *POMC/ADCY3*, OR 1.02 (0.98-1.06),  $P=0.4$ ; **Supplementary Table 3**).

We also, for the first time, used a genetic approach to assess the influence of body fat distribution on EC risk, an epidemiological association which is less clear than that of adiposity as measured by BMI. Combined as a wGRS, 34 SNPs reported as significantly

associated with WHR in women (11) were not significantly associated with EC in our sample. We focused on the 34-SNP WHRwGRS due to the marked sexual dimorphism amongst WHR-associated loci (11), however, the results did not differ when 47 SNPs were included in the WHRwGRS. Together, the 49 SNPs now reported as associated with WHR explain ~2.4% of the variance in WHR in women (~1.4% in both sexes combined) (11). As this is similar to the proportion of variation in BMI explained by currently known BMI-associated SNPs, it seems most likely that the lack of association between the WHRwGRS and EC is due to a true lack of association between WHR and EC, rather than the smaller number of SNPs included in the WHRwGRS, particularly as the WHR-EC association seen in epidemiological studies seems to be accounted for by BMI (4). Rather than WHR, waist circumference (WC) may be a more relevant measure of central adiposity, with evidence that the association between WC and EC is independent of BMI (4). However, analysis of the genetic association between WC and EC awaits the discovery of additional WC-associated SNPs, as only six have been reported to date (four in Caucasians), none of which reached genome-wide significance in women only (11).

In summary, our combined results from weighted genetic risk scores and Mendelian Randomization analysis provide a further line of evidence that increasing BMI has a direct effect on EC risk, and thus that interventions aimed at weight loss should reduce that risk (5). We also found that SNP alleles associated with increased BMI have an aggregate effect on EC risk that is over and above that predicted by their effects on BMI. This suggests a possible degree of pleiotropy in SNP functions, indicating that these SNPs, and potentially other BMI-associated SNPs yet to be discovered, would be more useful components in an EC risk prediction model than BMI itself. In contrast, our genetic findings indicate that WHR is not independently associated with EC risk. These findings support the value of genetic

approaches to verify causal relationships between epidemiological risk factors and cancer risk.

### **Acknowledgements**

The authors thank the many individuals who participated in this study and the numerous institutions and their staff who supported recruitment, detailed in full in the Supplementary Text. We also thank Felix Day and Stephen Burgess for helpful discussions.

## References

1. Ferlay J, Soerjomataram I, Dikshit R, Eser S, Mathers C, Rebelo M, et al. Cancer incidence and mortality worldwide: sources, methods and major patterns in GLOBOCAN 2012. *Int J Cancer* 2015;36:E359-86.
2. Tavassoli FA SM. Pathology and Genetics. Tumors of the breast and female genital organs. IARC WHO Classification of Tumours, No 4 Lyon: IARC Press2003.
3. Setiawan VW, Yang HP, Pike MC, McCann SE, Yu H, Xiang YB, et al. Type I and II endometrial cancers: have they different risk factors? *J Clin Oncol* 2013;31:2607-18.
4. Aune D, Navarro Rosenblatt DA, Chan DS, Vingeliene S, Abar L, Vieira AR, et al. Anthropometric factors and endometrial cancer risk: A systematic review and dose-response meta-analysis of prospective studies. *Ann Oncol* 2015;6:1635-48.
5. Nagle CM, Marquart L, Bain CJ, O'Brien S, Lahmann PH, Quinn M, et al. Impact of weight change and weight cycling on risk of different subtypes of endometrial cancer. *Eur J Can* 2013;49:2717-26.
6. Yang HP, Wentzensen N, Trabert B, Gierach GL, Felix AS, Gunter MJ, et al. Endometrial cancer risk factors by 2 main histologic subtypes: the NIH-AARP Diet and Health Study. *Am J Epidemiol* 2013;177:142-51.
7. Ju W, Kim HJ, Hankinson SE, De Vivo I, Cho E. Prospective study of body fat distribution and the risk of endometrial cancer. *Cancer Epidemiol* 2015;39:567-70.
8. Speliotes EK, Willer CJ, Berndt SI, Monda KL, Thorleifsson G, Jackson AU, et al. Association analyses of 249,796 individuals reveal 18 new loci associated with body mass index. *Nat Genet* 2010;42:937-48.
9. Locke AE, Kahali B, Berndt SI, Justice AE, Pers TH, Day FR, et al. Genetic studies of body mass index yield new insights for obesity biology. *Nature* 2015;518:197-206.

10. Heid IM, Jackson AU, Randall JC, Winkler TW, Qi L, Steinthorsdottir V, et al. Meta-analysis identifies 13 new loci associated with waist-hip ratio and reveals sexual dimorphism in the genetic basis of fat distribution. *Nat Genet* 2010;42:949-60.
11. Shungin D, Winkler TW, Croteau-Chonka DC, Ferreira T, Locke AE, Magi R, et al. New genetic loci link adipose and insulin biology to body fat distribution. *Nature* 2015;518:187-96.
12. Michailidou K, Hall P, Gonzalez-Neira A, Ghoussaini M, Dennis J, Milne RL, et al. Large-scale genotyping identifies 41 new loci associated with breast cancer risk. *Nat Genet* 2013;45:353-61.
13. Machiela MJ, Lindstrom S, Allen NE, Haiman CA, Albanes D, Barricarte A, et al. Association of type 2 diabetes susceptibility variants with advanced prostate cancer risk in the Breast and Prostate Cancer Cohort Consortium. *Am J Epidemiol* 2012;176:1121-9.
14. Thrift AP, Gong J, Peters U, Chang-Claude J, Rudolph A, Slattery ML, et al. Mendelian randomization study of body mass index and colorectal cancer risk. *Cancer Epidemiol Biomarkers Prev* 2015;24:1024-31.
15. Prescott J, Setiawan VW, Wentzensen N, Schumacher F, Yu H, Delahanty R, et al. Body mass index genetic risk score and endometrial cancer risk. *PloS One* 2015;10:e0143256.
16. Delahanty RJ, Beeghly-Fadiel A, Xiang YB, Long J, Cai Q, Wen W, et al. Association of obesity-related genetic variants with endometrial cancer risk: a report from the Shanghai Endometrial Cancer Genetics Study. *Am J Epidemiol* 2011;174:1115-26.
17. Palmer TM, Lawlor DA, Harbord RM, Sheehan NA, Tobias JH, Timpson NJ, et al. Using multiple genetic variants as instrumental variables for modifiable risk factors. *Stat Methods Med Res* 2012;21:223-42.

18. Spurdle AB, Thompson DJ, Ahmed S, Ferguson K, Healey CS, O'Mara T, et al. Genome-wide association study identifies a common variant associated with risk of endometrial cancer. *Nat Genet* 2011;43:451-4.
19. Painter JN, O'Mara TA, Batra J, Cheng T, Lose FA, Dennis J, et al. Fine-mapping of the HNF1B multicancer locus identifies candidate variants that mediate endometrial cancer risk. *Hum Mol Genet* 2015;24:1478-92.
20. Wellcome Trust Case Control C. Genome-wide association study of 14,000 cases of seven common diseases and 3,000 shared controls. *Nature* 2007;447:661-78.
21. Houlston RS, Cheadle J, Dobbins SE, Tenesa A, Jones AM, Howarth K, et al. Meta-analysis of three genome-wide association studies identifies susceptibility loci for colorectal cancer at 1q41, 3q26.2, 12q13.13 and 20q13.33. *Nat Genet* 2010;42:973-7.
22. Howie BN, Donnelly P, Marchini J. A flexible and accurate genotype imputation method for the next generation of genome-wide association studies. *PLoS Genet* 2009;5:e1000529.
23. Ferreira T, Marchini J. Modeling interactions with known risk loci—a Bayesian model averaging approach. *Ann Hum Genet* 2011;75:1-9.
24. Willer CJ, Li Y, Abecasis GR. METAL: fast and efficient meta-analysis of genomewide association scans. *Bioinformatics*. 2010;26:2190-1.
25. Bowden J, Davey Smith G, Burgess S. Mendelian randomization with invalid instruments: effect estimation and bias detection through Egger regression. *Int J Epidemiol* 2015;44:512-25.
26. Dal Maso L, Tavani A, Zucchetto A, Montella M, Ferraroni M, Negri E, et al. Anthropometric measures at different ages and endometrial cancer risk. *Br J Cancer* 2011;104:1207-13.



27. Amankwah EK, Friedenreich CM, Magliocco AM, Brant R, Courneya KS, Speidel T, et al. Anthropometric measures and the risk of endometrial cancer, overall and by tumor microsatellite status and histological subtype. *Am J Epidemiol* 2013;177:1378-87.
28. Zaki A, Gaber A, Ghanem E, Moemen M, Shehata G. Abdominal obesity and endometrial cancer in egyptian females with postmenopausal bleeding. *Nutr Cancer* 2011;63:1272-8.
29. Friedenreich C, Cust A, Lahmann PH, Steindorf K, Boutron-Ruault MC, Clavel-Chapelon F, et al. Anthropometric factors and risk of endometrial cancer: the European prospective investigation into cancer and nutrition. *Cancer Causes Control* 2007;18:399-413.
30. Conroy MB, Sattelmair JR, Cook NR, Manson JE, Buring JE, Lee IM. Physical activity, adiposity, and risk of endometrial cancer. *Cancer Causes Control* 2009;20:1107-15.
31. Reeves KW, Carter GC, Rodabough RJ, Lane D, McNeeley SG, Stefanick ML, et al. Obesity in relation to endometrial cancer risk and disease characteristics in the Women's Health Initiative. *Gynecol Oncol* 2011;121:376-82.
32. Xu WH, Matthews CE, Xiang YB, Zheng W, Ruan ZX, Cheng JR, et al. Effect of adiposity and fat distribution on endometrial cancer risk in Shanghai women. *Am J Epidemiol* 2005;161:939-47.
33. Shah NR, Braverman ER. Measuring adiposity in patients: the utility of body mass index (BMI), percent body fat, and leptin. *PloS One* 2012;7:e33308.
34. Crosbie EJ, Zwahlen M, Kitchener HC, Egger M, Renehan AG. Body mass index, hormone replacement therapy, and endometrial cancer risk: a meta-analysis. *Cancer Epidemiol Biomarkers Prev* 2010;19:3119-30
35. Welter D, MacArthur J, Morales J, Burdett T, Hall P, Junkins H, et al. The NHGRI GWAS Catalog, a curated resource of SNP-trait associations. *Nucleic Acids Res* 2014;42(Database issue):D1001-6.

36. WHO Expert Consultation. Appropriate body-mass index for Asian populations and its implications for policy and intervention strategies. *Lancet* 2004;363:157-63.

**Table 1.** Association between body mass index (BMI) and endometrial cancer risk overall, and for endometrioid and non-endometrioid histologies<sup>1</sup>

BMI <sup>2</sup> Category	<u>Controls</u>	<u>All cases</u>	<u>Endometrioid cases</u>		<u>Non-endometrioid cases</u>		
	N (%)	N (%)	OR (95% CIs)	N (%)	OR (95% CIs)	N (%)	OR (95% CIs)
<25kg/m <sup>2</sup>	7146 (45%)	1159 (28%)	Reference	964 (28%)	Reference	195 (32%)	Reference
25-29.9	5628 (35%)	1252 (31%)	1.06 (0.65-1.70)	1053 (30%)	1.05 (0.64-1.72)	199 (33%)	1.27 (1.07-1.48)
30-34.9	2213 (14%)	795 (19%)	1.60 (0.95-2.71)	684 (20%)	1.62 (0.94-2.80)	111 (18%)	1.88 (1.64-2.12)
35-39.9	693 (4%)	472 (12%)	3.522(2.35-4.43)	413 (12%)	3.26 (2.31-4.61)	59 (10%)	3.16 (2.85-3.48)
≥40	294 (2%)	409 (10%)	6.10 (3.67-10.17)	366 (10%)	6.26 (3.55-11.06)	43 (7%)	5.92 (5.56-6.27)
<i>P</i> <sub>trend</sub> <sup>3</sup>			1.8x10 <sup>-26</sup>		1.7x10 <sup>-17</sup>		1.42x10 <sup>-27</sup>
Per 5kg/m <sup>2</sup> increase in EC risk			1.55 (1.44-1.68)		1.56 (1.42-1.72)		1.50 (1.43-1.57)

<sup>1</sup>Random effects model.<sup>2</sup>BMI range: Overall 15.24-75.00 (mean 27.18, SD 5.72); Cases 15.24-75.00 (mean 29.86, SD 7.45) Controls 15.94-67.90 (mean 26.52, SD 4.99).<sup>3</sup>Tests for heterogeneity: All cases I<sup>2</sup>=73.4%, Q=7.53, P=0.02; Endometrioid cases I<sup>2</sup>=81.1%, Q=10.57, P=0.005. Non-endometrioid cases are from the iCOGs dataset only and were not meta-analyzed.

**Table 2.** Association of the 77 SNP body mass index weighted genetic risk score (BMIwGRS) with endometrial cancer risk

BMIwGRS <sup>1</sup> Quartiles	Total dataset		Dataset with BMI information		BMI-adjusted	
	Odds Ratio (95% CI)	P-value	Odds Ratio (95% CI)	P-value	Odds Ratio (95% CI)	P-value
<b>All cases</b>	<u>(6609 cases; 37926 controls)</u>		<u>(4062 cases; 15974 controls)</u>			
Q1	Reference		Reference		Reference	
Q2	1.06 (0.98-1.15)	1.1x10 <sup>-2</sup>	1.03 (0.93-1.14)	5.0x10 <sup>-1</sup>	0.98 (0.88-1.09)	8.0x10 <sup>-1</sup>
Q3	1.20 (1.12-1.28)	4.0x10 <sup>-6</sup>	1.23 (1.13-1.33)	6.7x10 <sup>-5</sup>	1.10 (1.00-1.21)	6.2x10 <sup>-2</sup>
Q4	1.34 (1.27-1.42)	2.3x10 <sup>-14</sup>	1.38 (1.28-1.48)	3.0x10 <sup>-10</sup>	1.16 (1.06-1.26)	3.7x10 <sup>-3</sup>
Per wGRS quartile increase in EC risk	1.02 (0.01-1.03)	9.2x10 <sup>-8</sup>	1.06 (1.04-1.07)	1.1x10 <sup>-10</sup>	1.03 (1.02-1.05)	1.3x10 <sup>-4</sup>
wGRS as a continuous variable	2.11 (1.94-2.28)	3.4x10 <sup>-17</sup>	2.24 (2.01-2.48)	4.2x10 <sup>-12</sup>	1.23 (1.12-1.36)	5.3x10 <sup>-4</sup>
<b>Endometrioid</b>	<u>(5612 cases; 37926 controls)</u>		<u>(3484 cases; 15974 controls)</u>			
Q1	Reference		Reference		Reference	
Q2	1.09 (1.00-1.17)	5.6x10 <sup>-2</sup>	1.05 (0.94-1.17)	3.5x10 <sup>-1</sup>	1.00 (0.88-1.11)	9.8x10 <sup>-1</sup>
Q3	1.22 (1.13-1.30)	4.1x10 <sup>-6</sup>	1.28 (1.17-1.39)	8.0x10 <sup>-6</sup>	1.14 (1.03-1.26)	1.8x10 <sup>-2</sup>
Q4	1.38 (1.30-1.46)	1.7x10 <sup>-14</sup>	1.43 (1.32-1.54)	5.3x10 <sup>-11</sup>	1.20 (1.09-1.31)	1.2x10 <sup>-3</sup>
Per wGRS quartile increase in EC risk	1.02 (0.01-1.03)	2.1x10 <sup>-7</sup>	1.06 (1.04-1.07)	1.0x10 <sup>-10</sup>	1.03 (1.02-1.05)	7.8x10 <sup>-5</sup>
wGRS as a continuous variable	2.27 (2.08-2.45)	6.6x10 <sup>-12</sup>	2.51 (2.30-2.72)	3.3x10 <sup>-17</sup>	1.26 (1.13-1.38)	2.2x10 <sup>-4</sup>

<sup>1</sup> BMIwGRS range: Overall 1.19-2.57 (mean 1.85, SD 0.17); Cases 1.21-2.53 (mean 1.87, SD 0.17); Controls 1.19-2.57 (mean 1.85, SD 0.17).

**Table 3.** Association of the 34- and 47-SNP waist-hip ratio weighted genetic risk score (WHRwGRS) with endometrial cancer risk

WHRwGRS <sup>1</sup> Quartiles	34-SNP wGRS		47-SNP wGRS	
	Odds Ratio (95% CI)	<i>P</i> -value	Odds Ratio (95% CI)	<i>P</i> -value
Q1	Reference		Reference	
Q2	1.00 (0.96-1.03)	9.5x10 <sup>-1</sup>	0.99 (0.96-1.02)	4.5x10 <sup>-1</sup>
Q3	0.98 (0.96-0.01)	7.0x10 <sup>-2</sup>	0.98 (0.94-0.01)	2.6x10 <sup>-1</sup>
Q4	0.99 (0.97-0.01)	3.2x10 <sup>-1</sup>	0.98 (0.95-0.01)	1.3x10 <sup>-1</sup>
Per wGRS quartile increase in EC risk	0.99 (0.99-1.00)	1.7x10 <sup>-1</sup>	0.99 (0.99-1.00)	2.4x10 <sup>-1</sup>
wGRS as a continuous variable	1.02 (0.99-1.04)	9.0x10 <sup>-2</sup>	0.97 (0.63-1.31)	8.6x10 <sup>-1</sup>

<sup>1</sup> Range 34 SNP WHRwGRS: Overall 0.53-1.52 (mean 0.98, SD 0.12); Cases 0.57-1.36 (mean 0.98, SD 0.12); Controls 0.53-1.52 (mean 0.98, SD 0.12). Range 47 SNP WHRwGRS: Overall 0.67-1.76 (mean 1.21, SD 0.14); Cases 0.67-1.69 (mean 1.22, SD 0.14); Controls 0.68-1.76 (mean 1.20, SD 0.14).

## Figure Legend

**Figure 1. Observed and predicted risks of increasing BMI on endometrial cancer.** The predicted effect of a 5kg/m<sup>2</sup> increase in BMI on EC risk was estimated by scaling the effect of the per weighted allele increase in the BMIwGRS on BMI (4.83 kg/m<sup>2</sup>) by the effect of the per weighted allele increase in the BMIwGRS on EC (OR 2.11) in our dataset ( $\exp[(4.83/5)*\ln(2.11)]$ ). The predicted effect (grey arrow) of a per 5kg/m<sup>2</sup> increase in BMI on endometrial cancer risk (OR 2.06) is larger than that observed in our study (OR 1.55).

**Supplementary Text for:**

**Genetic risk score Mendelian randomization shows obesity measured as body mass index, but not waist:hip ratio, is causal for endometrial cancer**

Jodie N Painter<sup>1</sup>, Tracy A O'Mara<sup>1</sup>, Louise Marquart<sup>1</sup>, Penelope M Webb<sup>1</sup>, on behalf of the AOCs Group<sup>1,2</sup>, John Attia<sup>3,4</sup>, Sarah E Medland<sup>1</sup>, Timothy Cheng<sup>5</sup>, Joe Dennis<sup>6</sup>, Elizabeth G Holliday<sup>3,4</sup>, Mark McEvoy<sup>4</sup>, Rodney J Scott<sup>3,7-9</sup>, Shahana Ahmed<sup>10</sup>, Catherine S Healey<sup>10</sup>, Mitul Shah<sup>10</sup>, Maggie Gorman<sup>5</sup>, Lynn Martin<sup>5</sup>, Shirley Hodgson<sup>11</sup>, Matthias W Beckmann<sup>12</sup>, Arif B Ekici<sup>13</sup>, Peter A Fasching<sup>12,14</sup>, Alexander Hein<sup>12</sup>, Matthias Rübner<sup>12</sup>, Kamila Czene<sup>15</sup>, Hatem Darabi<sup>15</sup>, Per Hall<sup>15</sup>, Jingmei Li<sup>15</sup>, Thilo Dörk<sup>16</sup>, Matthias Dürst<sup>17</sup>, Peter Hillemanns<sup>18</sup>, Ingo Runnebaum<sup>17</sup>, Frederic Amant<sup>19</sup>, Daniela Annibali<sup>19</sup>, Jeroen Depreeuw<sup>19-21</sup>, Diether Lambrechts<sup>20,21</sup>, Patrick Neven<sup>19</sup>, Julie M Cunningham<sup>22</sup>, Sean C Dowdy<sup>23</sup>, Ellen L Goode<sup>24</sup>, Brooke L Fridley<sup>25</sup>, Stacey J Winham<sup>24</sup>, Tormund S Njølstad<sup>26,27</sup>, Helga B Salvesen<sup>26,27</sup>, Jone Trovik<sup>26,27</sup>, Henrica MJ Werner<sup>26,27</sup>, Katie Ashton<sup>3,8,9</sup>, Geoffrey Otton<sup>28</sup>, Tony Proietto<sup>28</sup>, Miriam Mints<sup>29</sup>, Emma Tham<sup>30,31</sup>, on behalf of RENDOCAS<sup>30</sup>, Manjeet K Bolla<sup>6</sup>, Kyriaki Michailidou<sup>6</sup>, Qin Wang<sup>6</sup>, Jonathan P Tyrer<sup>10</sup>, John L Hopper<sup>32</sup>, Julian Peto<sup>33</sup>, Anthony J Swerdlow<sup>34,35</sup>, Barbara Burwinkel<sup>36,37</sup>, Hermann Brenner<sup>38-40</sup>, Alfons Meindl<sup>41</sup>, Hiltrud Brauch<sup>40,42,43</sup>, Annika Lindblom<sup>30</sup>, Jenny Chang-Claude<sup>44,45</sup>, Fergus J Couch<sup>22,24</sup>, Graham G Giles<sup>32,46,47</sup>, Vessela N Kristensen<sup>48-50</sup>, Angela Cox<sup>51</sup>, Paul D P Pharoah<sup>10</sup>, Ian Tomlinson<sup>5</sup>, on behalf of the National Study of Endometrial Cancer Genetics Group (NSECG)<sup>5</sup>, Alison M Dunning<sup>10</sup>, Douglas F Easton<sup>6,10</sup>, Deborah J Thompson<sup>6\*</sup>, Amanda B Spurdle<sup>1\*</sup>, on behalf of The Australian National Endometrial Cancer Study Group (ANECS)<sup>1</sup>

<sup>1</sup> Department of Genetics and Computational Biology, QIMR Berghofer Medical Research Institute, Brisbane, QLD, 4006, Australia.

<sup>2</sup> Peter MacCallum Cancer Center, The University of Melbourne, Melbourne, 3002, Australia.

<sup>3</sup> Hunter Medical Research Institute, John Hunter Hospital, Newcastle, NSW, 2305, Australia.

<sup>4</sup> Centre for Clinical Epidemiology and Biostatistics, School of Medicine and Public Health, University of Newcastle, NSW, 2305, Australia.

<sup>5</sup> Wellcome Trust Centre for Human Genetics, University of Oxford, Oxford, OX3 7BN, UK.

<sup>6</sup> Centre for Cancer Genetic Epidemiology, Department of Public Health and Primary Care, University of Cambridge, Cambridge, CB1 8RN, UK.

<sup>7</sup> Hunter Area Pathology Service, John Hunter Hospital, Newcastle, NSW, 2305, Australia.

<sup>8</sup> Centre for Information Based Medicine, University of Newcastle, NSW, 2308, Australia.

<sup>9</sup> School of Biomedical Sciences and Pharmacy, University of Newcastle, Newcastle, NSW, 2308, Australia.

<sup>10</sup> Centre for Cancer Genetic Epidemiology, Department of Oncology, University of Cambridge, Cambridge, CB1 8RN, UK.

<sup>11</sup> Department of Clinical Genetics, St George's, University of London, London, SW17 0RE, UK.

<sup>12</sup> Department of Gynecology and Obstetrics, University Hospital Erlangen, Friedrich-Alexander University Erlangen-Nuremberg, Erlangen, 91054, Germany.

<sup>13</sup> Institute of Human Genetics, University Hospital Erlangen, Friedrich-Alexander-University Erlangen-Nuremberg, Erlangen, 91054, Germany.

<sup>14</sup> University of California at Los Angeles, Department of Medicine, Division of Hematology/Oncology, David Geffen School of Medicine, Los Angeles, CA, 90095, USA.

<sup>15</sup> Department of Medical Epidemiology and Biostatistics, Karolinska Institutet, Stockholm, SE-171 77, Sweden.

<sup>16</sup> Hannover Medical School, Gynaecology Research Unit, Hannover, 30625, Germany.

<sup>17</sup> Department of Gynaecology, Jena University Hospital - Friedrich Schiller University, Jena, 07743, Germany.

<sup>18</sup> Hannover Medical School, Clinics of Gynaecology and Obstetrics, Hannover, 30625, Germany.

<sup>19</sup> Department of Obstetrics and Gynecology, Division of Gynecologic Oncology, University Hospitals, KU Leuven - University of Leuven, 3000, Belgium.

<sup>20</sup> Vesalius Research Center, VIB, Leuven, 3000, Belgium.

<sup>21</sup> Laboratory for Translational Genetics, Department of Oncology, University Hospitals Leuven, Leuven, 3000, Belgium.

<sup>22</sup> Department of Laboratory Medicine and Pathology, Mayo Clinic, Rochester, MN, 55905, USA.



- <sup>23</sup> Department of Obstetrics and Gynecology, Division of Gynecologic Oncology, Mayo Clinic, Rochester, MN, 55905, USA.
- <sup>24</sup> Department of Health Sciences Research, Mayo Clinic, Rochester, MN, 55905, USA.
- <sup>25</sup> Department of Biostatistics, University of Kansas Medical Center, Kansas City, KS, 66160, USA.
- <sup>26</sup> Centre for Cancerbiomarkers, Department of Clinical Science, The University of Bergen, 5020, Norway.
- <sup>27</sup> Department of Obstetrics and Gynecology, Haukeland University Hospital, Bergen, 5021, Norway.
- <sup>28</sup> School of Medicine and Public Health, University of Newcastle, Newcastle, NSW, 2308, Australia.
- <sup>29</sup> Department of Women's and Children's Health, Karolinska Institutet, Karolinska University Hospital, Stockholm, SE-171 77, Sweden.
- <sup>30</sup> Department of Molecular Medicine and Surgery, Karolinska Institutet, Stockholm, SE-171 77, Sweden.
- <sup>31</sup> Clinical Genetics, Karolinska University Hospital Solna, Stockholm, SE-17176 77, Sweden.
- <sup>32</sup> Centre for Epidemiology and Biostatistics, Melbourne School of Population and Global Health, The University of Melbourne, Vic, 3010, Australia.
- <sup>33</sup> London School of Hygiene and Tropical Medicine, London, WC1E 7HT, UK.
- <sup>34</sup> Division of Genetics and Epidemiology, Institute of Cancer Research, London, SM2 5NG, UK.
- <sup>35</sup> Division of Breast Cancer Research, Institute of Cancer Research, London, SM2 5NG, UK.
- <sup>36</sup> Molecular Biology of Breast Cancer, Department of Gynecology and Obstetrics, University of Heidelberg, Heidelberg, 69120, Germany.
- <sup>37</sup> Molecular Epidemiology Group, German Cancer Research Center, DKFZ, Heidelberg, 69120, Germany.
- <sup>38</sup> Division of Clinical Epidemiology and Aging Research, German Cancer Research Center (DKFZ), Heidelberg, 69120, Germany.
- <sup>39</sup> Division of Preventive Oncology, German Cancer Research Center (DKFZ) and National Center for Tumor Diseases (NCT), Heidelberg, 69120, Germany

<sup>40</sup> German Cancer Consortium (DKTK), German Cancer Research Center (DKFZ), Heidelberg, 69120, Germany

<sup>41</sup> Department of Obstetrics and Gynecology, Division of Tumor Genetics, Technical University of Munich, Munich, 80333, Germany.

<sup>42</sup> Dr. Margarete Fischer-Bosch-Institute of Clinical Pharmacology, Stuttgart, 70376, Germany.

<sup>43</sup> University of Tübingen, Tübingen, 72074, Germany

<sup>44</sup> Division of Cancer Epidemiology, German Cancer Research Center (DKFZ), Heidelberg, 69120, Germany.

<sup>45</sup> University Cancer Center Hamburg (UCCH), University Medical Center Hamburg-Eppendorf, Hamburg, 20246, Germany

<sup>46</sup> Cancer Epidemiology Centre, Cancer Council Victoria, Melbourne, Vic, 3004, Australia.

<sup>47</sup> Department of Epidemiology and Preventive Medicine, Monash University, Melbourne, Vic, 3004, Australia.

<sup>48</sup> Department of Genetics, Institute for Cancer Research, The Norwegian Radium Hospital, Oslo, 0310, Norway.

<sup>49</sup> The K.G. Jebsen Center for Breast Cancer Research, Institute for Clinical Medicine, Faculty of Medicine, University of Oslo, Oslo, 0316, Norway .

<sup>50</sup> Department of Clinical Molecular Oncology, Division of Medicine, Akershus University Hospital, Lørenskog, 1478, Norway.

<sup>51</sup> Sheffield Cancer Research, Department of Oncology, University of Sheffield, Sheffield, S10 2RX, UK.

**INDEX**

<b>A. ECAC Study Collaborators (for case samples):</b> .....	<b>6</b>
<b>B. BCAC and OCAC Study Collaborators (for control samples):</b> .....	<b>7</b>
<b>C. Supplementary Acknowledgements</b> .....	<b>7</b>
<b>D. Supplementary Figure 1.</b> .....	<b>10</b>
<b>E. Supplementary Figure 2.</b> .....	<b>12</b>
<b>F. Supplementary Figure 3.</b> .....	<b>13</b>
<b>G. Supplementary Figure 4.</b> .....	<b>14</b>
<b>H. References</b> .....	<b>15</b>

## A. ECAC Study Collaborators (for case samples):

**The ANECS Group comprises:** AB Spurdle, PM Webb, J Young (QIMR Berghofer Medical Research Institute); Consumer representative: L McQuire; Clinical Collaborators: NSW: S Baron-Hay, D Bell, A Bonaventura, A Brand, S Braye, J Carter, F Chan, C Dalrymple, A Ferrier (deceased), G Gard, N Hacker, R Hogg, R Houghton, D Marsden, K McIlroy, G Otton, S Pather, A Proietto, G Robertson, J Scurry, R Sharma, G Wain, F Wong; Qld: J Armes, A Crandon, M Cummings, R Land, J Nicklin, L Perrin, A Obermair, B Ward; SA: M Davy, T Dodd, J Miller, M Oehler, S Paramasivum, J Pierides, F Whitehead; Tas: P Blomfield, D Challis; Vic: D Neesham, J Pyman, M Quinn, R Rome, M Weitzer; WA: B Brennan, I Hammond, Y Leung, A McCartney (deceased), C Stewart, J Thompson; Project Managers: S O'Brien, S Moore; Laboratory Manager: K Ferguson; Pathology Support: M Walsh; Admin Support: R Cicero, L Green, J Griffith, L Jackman, B Ranieri; Laboratory Assistants: M O'Brien, P Schultz; Research Nurses: B Alexander, C Baxter, H Croy, A Fitzgerald, E Herron, C Hill, M Jones, J Maidens, A Marshall, K Martin, J Mayhew, E Minehan, D Roffe, H Shirley, H Steane, A Stenlake, A Ward, S Webb, J White.

**CHIBCHA (study of hereditary cancer in Europe and Latin America) collaborators include:** Ma. Magdalena Echeverry de Polanco, Mabel Elena Bohórquez, Rodrigo Prieto, Angel Criollo, Carolina Ramírez, Ana Patricia Estrada, Jhon Jairo Suárez (Grupo de Citogenética Filogenia y Evolución de Poblaciones, Universidad del Tolima, Colombia); Augusto Rojas Martinez (Center for Research and Development in Health Sciences, Universidad Autónoma de Nuevo León, Monterrey, Mexico); Silvia Rogatto, Samuel Aguiar Jnr, Ericka Maria Monteiro Santos (Department of Urology, School of Medicine, UNESP - São Paulo State University, Botucatu, Brazil); Monica Sans, Valentina Colistro, Pedro C. Hidalgo, Patricia Mut (Department of Biological Anthropology, College of Humanities and Educational Sciences, University of the Republic, Magallanes, Montevideo, Uruguay); Angel Carracedo, Clara Ruiz Ponte, Ines Quntela Garcia (Fundacion Publica Galega de Medicina Xenomica, CIBERER, Genomic Medicine Group-University of Santiago de Compostela, Hospital Clinico, Santiago de Compostela, Galicia, Spain); Sergi Castellvi-Bel (Department of Gastroenterology, Institut de Malalties Digestives i Metabòliques, Hospital Clínic, Centro de Investigación Biomédica en Red de Enfermedades Hepáticas y Digestivas, IDIBAPS, University of Barcelona, Barcelona, Catalonia, Spain); Manuel Teixeira (Department of Genetics, Portuguese Oncology Institute, Rua Dr, António Bernardino de Almeida, Porto, Portugal).

**NECS collaborators include:** Ute Hamann and Michael Gilbert.

**The NSECG Group comprises:** Ian Tomlinson (Oxford University); M Adams, A Al-Samarraie, S Anwar, R Athavale, S Awad, A Bali, A Barnes, G Cawdell, S Chan, K Chin, P Cornes, M Crawford, J Cullimore, S Ghaem-Maghani, R Gornall, J Green, M Hall, M Harvey, J Hawe, A Head, J Herod, M Hingorani, M Hocking, C Holland, T Hollingsworth, J Hollingworth, T Ind, R Irvine, C Irwin, M Katesmark, S Kehoe, G Kheng-Chew, K Lankester, A Linder, D Luesley, C B-Lynch, V McFarlane, R Naik, N Nicholas, D Nugent,

S Oates, A Oladipo, A Papadopoulos, S Pearson, D Radstone, S Raju, A Rathmell, C Redman, M Rymer, P Sarhanis, G Sparrow, N Stuart, S Sundar, A Thompson, S Tinkler, S Trent, A Tristram, N Walji, R Woolas.

***RENDOCAS investigators include:*** Annika Lindblom, Gerasimos Tzortzatos, Miriam Mints, Emma Tham, Ofra Castro, Kristina Gemzell-Danielsson.

***SEARCH collaborators include:*** Helen Baker, Caroline Baynes, Don Conroy, Bridget Curzon, Patricia Harrington, Sue Irvine, Craig Luccarini, Rebecca Mayes, Hannah Munday, Barbara Perkins, Daisy Pharoah, Radka Platte, Anne Stafford and Judy West.

## **B. BCAC and OCAC Study Collaborators (for control samples):**

***The Australian Ovarian Cancer Study Group comprises:*** R Stuart-Harris; NSW- F Kirsten, J Rutovitz, P Clingan, A Glasgow, A Proietto, S Braye, G Otton, J Shannon, T Bonaventura, J Stewart, S Begbie, M Friedlander, D Bell, S Baron-Hay, A Ferrier (deceased), G Gard, D Nevell, N Pavlakis, S Valmadre, B Young, C Camaris, R Crouch, L Edwards, N Hacker, D Marsden, G Robertson, P Beale, J Beith, J Carter, C Dalrymple, R Houghton, P Russell, L Anderson, M Links, J Grygiel, J Hill, A Brand, K Byth, R Jaworski, P Harnett, R Sharma, G Wain; QLD- D Purdie, D Whiteman, B Ward, D Papadimos, A Crandon, M Cummings, K Horwood. A Obermair, L Perrin, D Wyld, J Nicklin; SA- M Davy, MK Oehler, C Hall, T Dodd, T Healy, K Pittman, D Henderson, J Miller, J Pierdes, A Achan; TAS- P Blomfield, D Challis, R McIntosh, A Parker; VIC- B Brown, R Rome, D Allen, P Grant, S Hyde, R Laurie M Robbie, D Healy, T Jobling, T Manolitsas, J McNealage, P Rogers, B Susil, E Sumithran, I Simpson, I Haviv, K Phillips, D Rischin, S Fox, D Johnson, S Lade, P Waring, M Loughrey, N O'Callaghan, B Murray, L Mileskin, P Allan; V Billson, J Pyman, D Neesham, M Quinn, A Hamilton, C Underhill, R Bell, LF Ng, R Blum, V Ganju; WA- I Hammond, A McCartney (deceased), C Stewart, Y Leung, M Buck, N Zeps (WARTN); AOCs Management Group- DDL Bowtell, AC Green, G Chenevix-Trench, A deFazio, D Gertig, PM Webb.

***BSUCH collaborator:*** Peter Bugert.

***ESTHER collaborators:*** Volker Arndt, Heiko Müller, Christa Stegmaier.

***GENICA Network collaborators:*** Wing-Yee Lo, Christina Justenhoven, Ute Hamann, Thomas Brüning, Beate Pesch, Yon-Dschun Ko, Sylvia Rabstein, Anne Lotz, Christina Baisch, Hans-Peter Fischer, Volker Harth.

## C. Supplementary Acknowledgements

The authors thank the many individuals who participated in this study and the numerous institutions and their staff who have supported recruitment.

ANECs thanks members of the Molecular Cancer Epidemiology and Cancer Genetic laboratories at QIMR Berghofer Medical Research Institute for technical assistance, and the ANECs research team for assistance with the collection of risk factor information and blood samples. ANECs also gratefully acknowledges the cooperation of the following institutions: NSW: John Hunter Hospital, Liverpool Hospital, Mater Misericordiae Hospital (Sydney), Mater Misericordiae Hospital (Newcastle), Newcastle Private Hospital, North Shore Private Hospital, Royal Hospital for Women, Royal Prince Alfred Hospital, Royal North Shore Hospital, Royal Prince Alfred Hospital, St George Hospital; Westmead Hospital, Westmead Private Hospital; Qld: Brisbane Private Hospital, Greenslopes Hospital, Mater Misericordiae Hospitals, Royal Brisbane and Women's Hospital, Wesley Hospital, Queensland Cancer Registry; SA: Adelaide Pathology Partners, Burnside Hospital, Calvary Hospital, Flinders Medical Centre, Queen Elizabeth Hospital, Royal Adelaide Hospital, South Australian Cancer Registry; Tas: Launceston Hospital, North West Regional Hospitals, Royal Hobart Hospital; Vic: Freemasons Hospital, Melbourne Pathology Services, Mercy Hospital for Women, Royal Women's Hospital, Victorian Cancer Registry; WA: King Edward Memorial Hospital, St John of God Hospitals Subiaco & Murdoch, Western Australian Cancer Registry.

SEARCH thanks the SEARCH research team for recruitment, and also acknowledges the assistance of the Eastern Cancer Registration and Information Centre for subject recruitment.

BECS thanks Reiner Strick, Silke Landrith and Sonja Oeser for their logistic support during the study.

CAHRES (formerly known as SASBAC) thanks Li Yuqing from the Genome Institute of Singapore for contributions to this study, and also acknowledges previous input to SASBAC resource creation by Anna Christensson, Boel Bissmarck, Kirsimari Aaltonen, Karl von Smitten, Nina Puolakka, Christer Halldén, Lim Siew Lan and Irene Chen, Lena U. Rosenberg, Mattias Hammarström, and Eija Flygare.

HJECS thanks Wen Zheng, Hermann Hertel, and Tjong-Won Park-Simon at Hannover Medical School for their contribution to sample recruitment.

LES gratefully acknowledges Helena Soenen, Gilian Peuteman and Dominiek Smeets for their technical assistance.

MECS thanks Tom Sellers, Catherine Phelan, Andrew Berchuck, and Kimberly Kalli, Amanda von Bismarck, Luisa Freyer and Lisa Rogmann.

MoMaTEC thanks Britt Edvardsen, Ingjerd Bergo and Mari Kyllsø Halle for technical assistance and Inger Marie Aksnes and Tor Audun Hervig at the Blood bank, Haukeland University Hospital for assistance with control recruitment.

NECS thanks staff at the University of Newcastle and the Hunter Medical Research Institute.

NSECG thank Ella Barclay and Lynn Martin for their contribution, and acknowledge the invaluable help of the National Cancer Research Network with the collection of study participants.

QIMR Berghofer thanks Margie Wright, Lisa Bowdler, Sara Smith, Megan Campbell and Scott Gordon for control sample collection and data processing, Kerenaftali Klein for statistical advice and Brendan Ryan for assistance with the figures.

REDOCAS thanks Berith Wejderot, Sigrid Sahlen, Tao Liu, Margareta Ström, Maria Karlsson, and Birgitta Byström for their contribution to the study.

BSUCH thanks the Medical Faculty, Mannheim, the Diemtmar Hopp Foundation and the German Cancer Research Center.

MCCS was made possible by the contribution of many people, including the original investigators and the diligent team who recruited the participants and who continue working on follow up. We would like to express our gratitude to the many thousands of Melbourne residents who continue to participate in the study.

The UKBGS thank Breakthrough Breast Cancer and the Institute of Cancer Research for support and funding, and the Study participants, Study staff, and the doctors, nurses and other health care staff

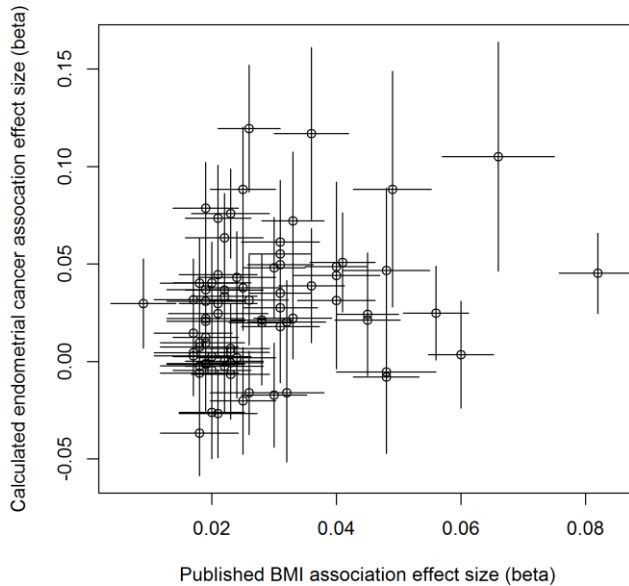
and data providers who have contributed to the Study. The ICR acknowledges NHS funding to the NIHR Biomedical Research Centre.

In addition, the iCOGS study would not have been possible without the contributions of: Andrew Berchuck (OCAC), Rosalind A. Eeles, Ali Amin Al Olama, Zsofia Kote-Jarai, Sara Benlloch (PRACTICAL), Georgia Chenevix-Trench, Antonis Antoniou, Lesley McGuffog, Fergus Couch and Ken Offit (CIMBA), Andrew Lee, and Ed Dicks, Craig Luccarini and the staff of the Centre for Cancer Genetic Epidemiology Laboratory (Cambridge), Javier Benitez, Anna Gonzalez-Neira and the staff of the CNIO genotyping unit, Jacques Simard and Daniel C. Tessier, Francois Bacot, Daniel Vincent, Sylvie LaBoissière and Frederic Robidoux and the staff of the McGill University and Génome Québec Innovation Centre, Stig E. Bojesen, Sune F. Nielsen, Borge G. Nordestgaard, and the staff of the Copenhagen DNA laboratory, Sharon A. Windebank, Christopher A. Hilker, Jeffrey Meyer and the staff of Mayo Clinic Genotyping Core Facility.



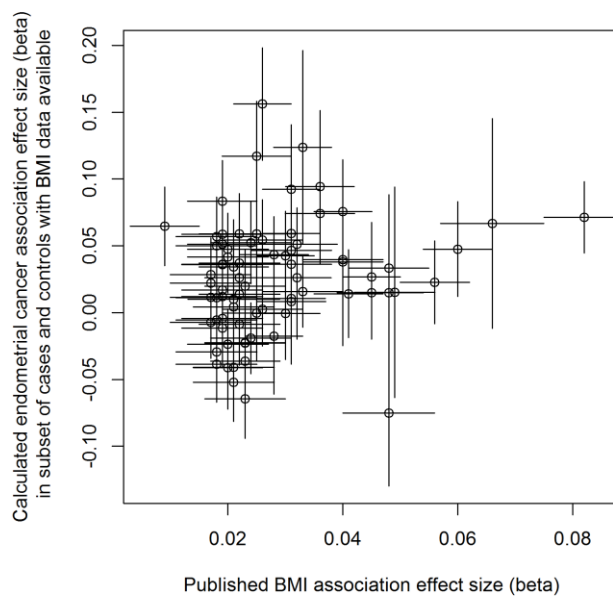
**D. Supplementary Figure 1:** Relationship between endometrial cancer association effect size (this study) and published BMI effect size for 77 BMI-associated SNPs (1). **A.** Overall endometrial cancer association effect size; **B.** Endometrial cancer association effect size including only cases and controls with BMI data; **C.** Endometrial cancer association effect size including only cases and controls with BMI data conditioning on BMI.

A.



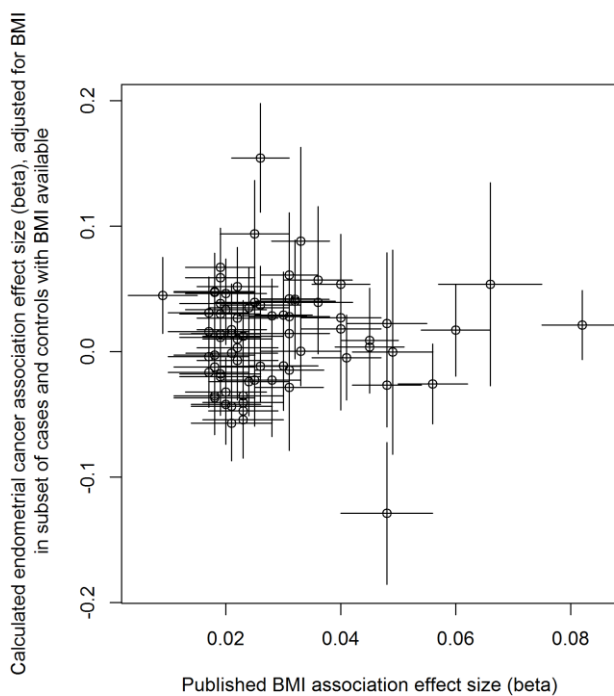
Pearson R for correlation between effect sizes=0.26, N=77, *P*-value=0.02

B.



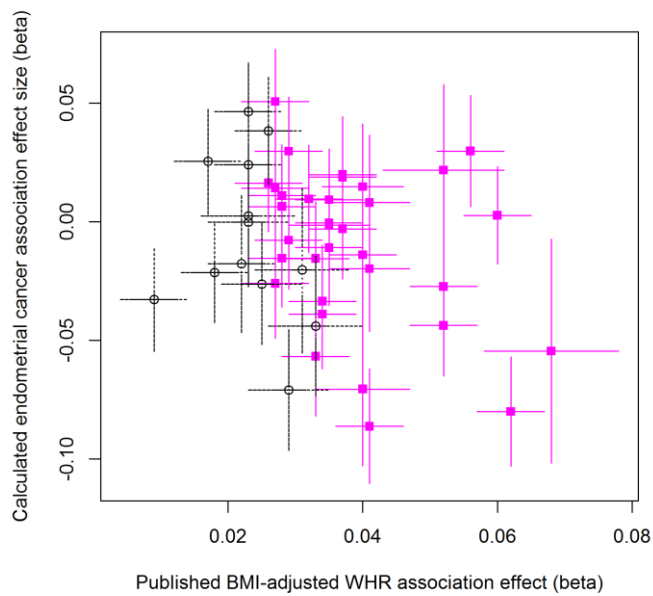
Pearson R for correlation between effect sizes=0.19, N=77, *P*-value=0.09

C.



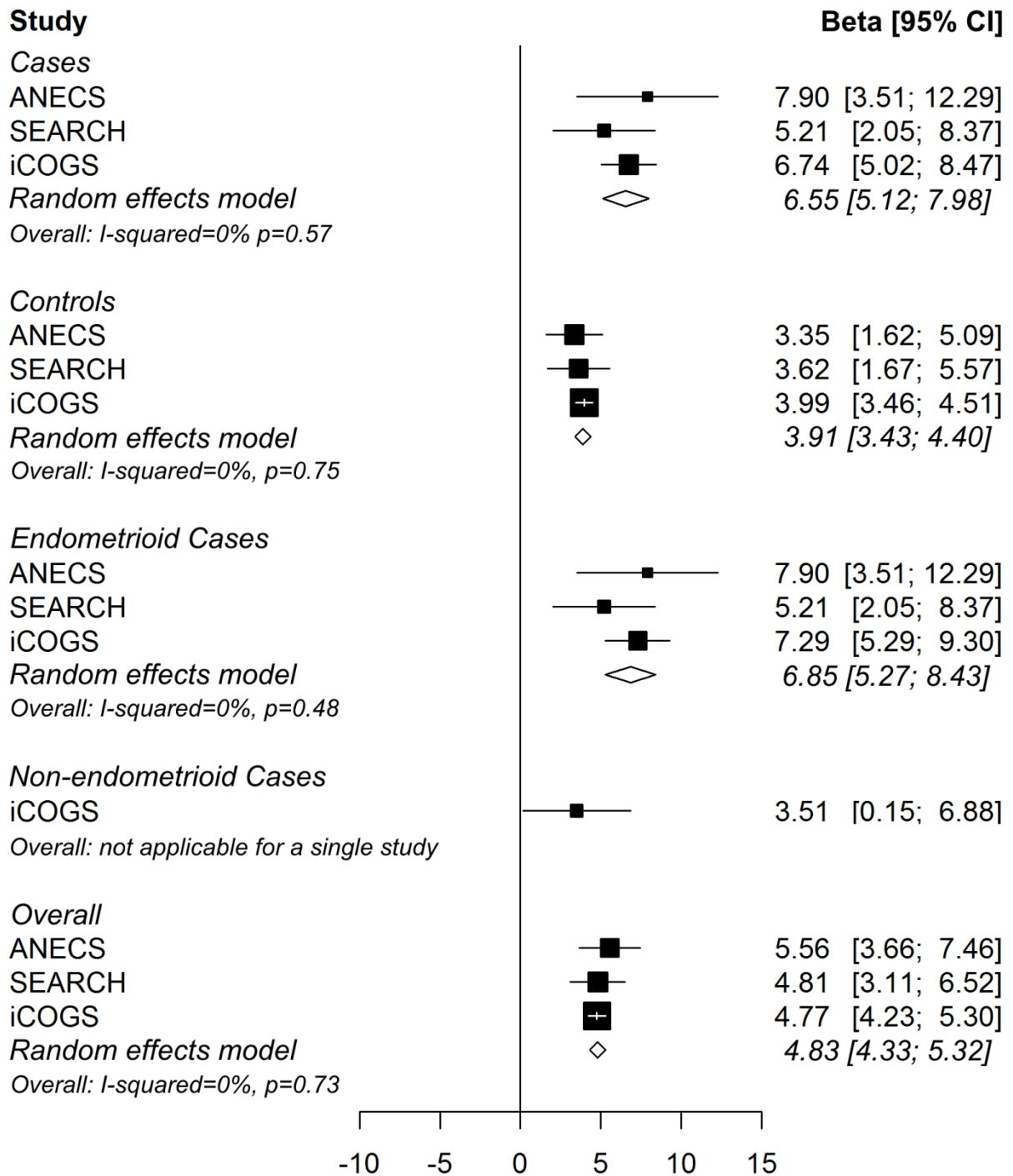
Pearson R for correlation between effect sizes=0.004, N=77, P-value=0.96

**E. Supplementary Figure 2.** Relationship between endometrial cancer association effect size (this study) and published WHR effect size for 47 WHR-associated SNPs (2). SNPs reaching genome-wide significant association with WHR in analyses including women only are shown in pink, while SNPs reaching genome-wide significant association with WHR only in sex-combined analyses are shown in black.



Pearson R for correlation between effect sizes=0.19, N=47,  $P$ -value=0.09

**F: Supplementary Figure 3:** Forest plot of effect sizes for the association between the 77 SNP BMIwGRS and BMI across three endometrial cancer datasets and endometrioid and non-endometrioid histologies.



**G. Supplementary Figure 4.** Funnel plot of minor allele frequency corrected SNP associations with BMI, against the BMI-EC causal estimates. Each dot indicates one of the 77 BMI SNPs. The darker grey vertical line represents the random effects combined causal estimate (95% CI limits shown by lighter grey vertical lines).

Meta-analysis of the causal estimates\* from each of the 77 BMI SNPs:

Fixed effects: OR=1.98 (95% CI 1.67-2.36)  $P=1.1 \times 10^{-14}$

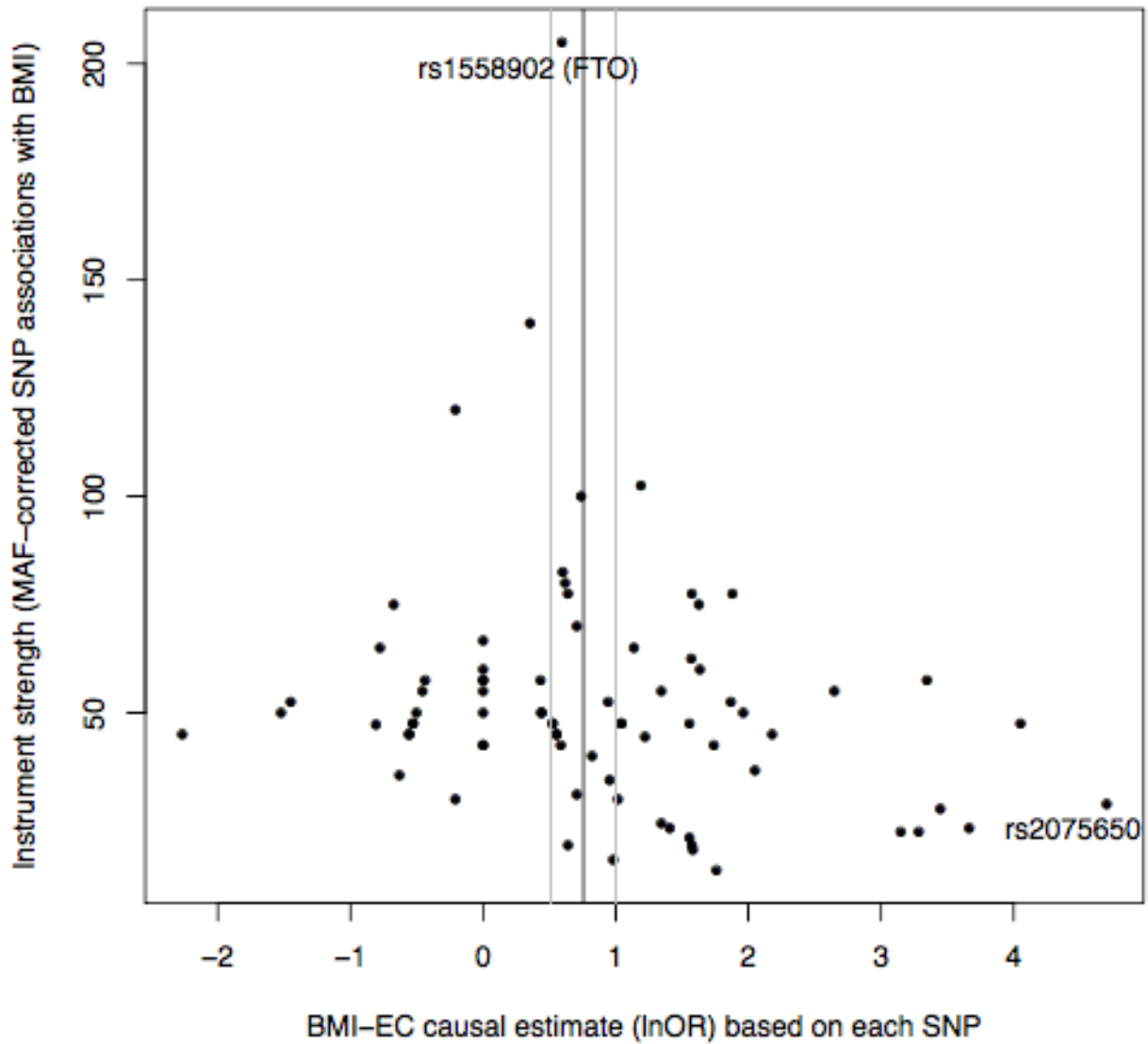
Random effects: OR=2.13 (95% CI 1.67-2.72)  $P=1.8 \times 10^{-9}$

Heterogeneity  $I^2=41\%$

$P_{\text{Cochran's Q}} = 1.5 \times 10^{-4}$

\*Note: OR cannot be interpreted in terms of  $\text{kg/m}^2$  because the BMI regression coefficients from the GIANT consortium were derived using an inverse normalised transformation of BMI.

Supplementary Figure 4



## H. References

1. Locke AE, Kahali B, Berndt SI, Justice AE, Pers TH, Day FR, et al. Genetic studies of body mass index yield new insights for obesity biology. *Nature* 2015;518:197-206
2. Shungin D, Winkler TW, Croteau-Chonka DC, Ferreira T, Locke AE, Magi R, et al. New genetic loci link adipose and insulin biology to body fat distribution. *Nature* 2015;518:187-196

Supplemental Table 1. Details of cases and controls included in the endometrial cancer analyses*					
Study	Acronym	Description	Cases	Controls	Genotyping platform
<b>Genome-wide association studies</b>					
Australian National Endometrial Cancer Study	ANECs	Australia; population based case-control study	606	-	Illumina 610K
Queensland Institute of Medical Research	QIMR	Australia; parents of participants in adolescent twin study	-	1,846	Illumina 610K
Hunter Community Study	HCS	Australia; population-based cohort	-	1,237	Illumina 610K
Study of Epidemiology and Risk Factors in Cancer Heredity	SEARCH	England; population based case-control study	681	-	Illumina 610K
Wellcome Trust Case-Control Consortium	WTCCC	United Kingdom; sample from 1958 Birth Cohort and UK Blood Donors from NBS	-	5,190	Illumina 1.2M
National Study of the Genetics of Endometrial Cancer	NSECG	United Kingdom; population based case-control study	919	-	Illumina 660K
Colorectal Tumour Gene Identification	CORGI	United Kingdom; cancer-free spouse/partner controls for colorectal cancer study	-	894	Illumina Hap550
<b>iCOGS Sample Sets**</b>					
Australian National Endometrial Cancer Study	ANECs	Australia; population-based case-control study	439	-	Custom Illumina Infinium iSelect array
Newcastle Endometrial Cancer Study	NECS	Newcastle, Australia; hospital-based cases	182	-	Custom Illumina Infinium iSelect array
Australian Breast Cancer Family Study	ABCFS	Melbourne/Sydney Australia; from electoral rolls	-	550	Custom Illumina Infinium iSelect array
Australian Ovarian Cancer Study	AOCS	Australia; population-based, from electoral rolls	-	896	Custom Illumina Infinium iSelect array
Melbourne Collaborative Cohort Study	MCCS	Melbourne, Australia; random sample from initial cohort	-	510	Custom Illumina Infinium iSelect array
Study of Epidemiology and Risk Factors in Cancer Heredity	SEARCH	England; population based case-control study	829	8,045	Custom Illumina Infinium iSelect array
National Study of the Genetics of Endometrial Cancer	NSECG	UK; population based case-control study	797	-	Custom Illumina Infinium iSelect array
British Breast Cancer Study	BBCS	UK; friend, sister-in-law, daughter-in-law or other non-blood relative of breast cancer case	-	1395	Custom Illumina Infinium iSelect array
Sheffield Breast Cancer Study	SBCS	Sheffield, UK; women attending Sheffield Mammography Screening, with no breast lesion	-	848	Custom Illumina Infinium iSelect array
UK Breakthrough Generations Study	UKBGS	UK; women without breast cancer selected from BGS cohort	-	471	Custom Illumina Infinium iSelect array
Mayo Endometrial Cancer Study	MECS	Mayo Clinic, USA. Hospital based case-control study.	236	-	Custom Illumina Infinium iSelect array
Mayo Clinic Breast Cancer Study	MCBCS	Mayo Clinic, USA. Cancer-free women presenting for general medical examination	-	1928	Custom Illumina Infinium iSelect array
Mayo Clinic Ovarian Cancer Case-Control Study	MCOCCS	Mayo Clinic, USA. Cancer-free women presenting for general medical examination	-	656	Custom Illumina Infinium iSelect array
Leuven Endometrial Cancer Study	LES	Leuven, Belgium; hospital based case-control study	327	-	Custom Illumina Infinium iSelect array
Leuven Multidisciplinary Breast Centre	LMBC	Leuven, Belgium; blood donors.	-	1387	Custom Illumina Infinium iSelect array
Bavarian Endometrial Cancer Study/Hannover-Jena Endometrial Cancer Study	BECS/HJECS	Germany; hospital-based/population-based case-control study	139	-	Custom Illumina Infinium iSelect array
Bavarian Breast Cancer Cases and Controls	BBCC	Bavaria, Germany; healthy women >55yrs from newspaper advertisement	-	458	Custom Illumina Infinium iSelect array
Breast Cancer Study of the University Clinic Heidelberg	BSUCH	Mannheim, Germany; female blood donors	-	953	Custom Illumina Infinium iSelect array
ESTHER Breast Cancer Study	ESTHER	Saarland, Germany; random sample from routine health check-up	-	502	Custom Illumina Infinium iSelect array
German Consortium for Hereditary Breast & Ovarian Cancer	GC-HBOC	Augsburg, Germany; KORA study	-	139	Custom Illumina Infinium iSelect array
Gene Environment Interaction and Breast Cancer in Germany	GENICA	Bonn area, Germany; random address sample	-	427	Custom Illumina Infinium iSelect array
Mammary Carcinoma Risk Factor Investigation	MARIE	Hamburg/Rhein-Neckar-Karlsruhe, Germany; randomly drawn from population registries	-	1777	Custom Illumina Infinium iSelect array
Molecular Markers in Treatment of Endometrial Cancer	MoMaTEC	Norway; population based case-control study	637	183	Custom Illumina Infinium iSelect array
Norwegian Breast Cancer Study	NBCS	Tromso/Bergen, Norway; attendees at Norwegian Breast Cancer Screening Program	-	70	Custom Illumina Infinium iSelect array
Cancer Hormone Replacement Epidemiology in Sweden	CAHRES	Sweden; population based case-control study	554	1374	Custom Illumina Infinium iSelect array
Registry of Endometrial Cancer in Sweden	RENDOCAS	Stockholm, Sweden; hospital based study	262	-	Custom Illumina Infinium iSelect array
Karolinska Breast Cancer Study	KARBAC	Stockholm, Sweden; blood donors	-	660	Custom Illumina Infinium iSelect array
Karolinska Mammography Project for Risk Prediction of Breast Cancer	pKARMA	Helsingborg/Stockholm, Sweden; cancer-free participants in KARMA mammographic screening program	-	5529	Custom Illumina Infinium iSelect array
<b>TOTAL</b>			<b>6,608</b>	<b>37,925</b>	
* For further details of substudies, please see Painter et al Hum Mol Genet. (2015) 24:1478-92.					
The number of cases and controls represents the maximum number of genotypes from cases and controls of reported Caucasian ethnicity, following exclusions					
**For the iCOGS sample sets, studies which are grouped together in the table were analysed as a single strata.					



**Supplemental Table 2. Average BMIs in the ANECS, SEARCH and iCOGS endometriosis studies**

	<b>Range</b>	<b>Mean (SD)</b>	<b>Pdiff*</b>	<b>N</b>
<b>ANECS</b>				
Cases	18.8-75.0	32.1 (8.9)	2.7x10 <sup>-17</sup>	585
Controls	16.5-47.4	28.7 (4.7)		631
<b>SEARCH</b>				
Cases	16.1-60.8	29.1 (6.5)	2.4x10 <sup>-16</sup>	644
Controls	17.2-54.2	26.7 (5.3)		1259
<b>iCOGs</b>				
All cases	15.2-66.7	29.5 (7.3)	4.3x10 <sup>-105</sup>	2864
<i>Endometrioid-only</i>	16.4-66.7	29.8 (7.5)		6.9x10 <sup>-93</sup>
<i>Non-endometrioid</i>	15.2-54.2	28.6 (6.5)	1.9x10 <sup>-16</sup>	578
Controls	15.4-67.9	26.3 (4.9)		14098

\*P-value for a 2-tailed Student's t-test of unequal variances between cases and controls

**al cancer datasets.**

**Supplementary Table 3.** Association of 77 body mass index (BMI) SNPs with endometrial cancer risk and BMI in the endometrial cancer dataset

The single SNP passing the study-wide significance threshold for significant association with endometrial cancer risk ( $0.05/124=4.0 \times 10^{-4}$ ) is shown in bold.

SNP <sup>1</sup>	CHR	Build 19 Position	Notable Genes <sup>2</sup>	BMI effect size <sup>3</sup>	Effect allele	Other allele	Association with endometrial cancer risk				Association with BMI in this dataset			
							P-value	OR (SE)	Q	I	P-value	Beta SE)	Q	I
rs657452	1	49589847	<i>AGBL4</i>	0.023	A	G	$8.2 \times 10^{-1}$	1.00 (0.02)	0.79	0	$2.1 \times 10^{-1}$	0.01 (0.01)	0.268	24.1
rs11583200	1	50559820	<i>ELAVL4</i>	0.018	C	T	$9.4 \times 10^{-2}$	0.96 (0.02)	0.33	12.81	$8.8 \times 10^{-1}$	0.00 (0.01)	0.433	0
rs3101336	1	72751185	<i>NEGR1</i>	0.033	C	T	$2.9 \times 10^{-1}$	1.02 (0.02)	0.48	0	$4.3 \times 10^{-3}$	0.03 (0.01)	0.251	27.7
rs12566985	1	75002193	<i>FPGT-TNN13K</i>	0.024	G	A	$9.3 \times 10^{-1}$	1.00 (0.02)	0.2	35.23	$3.8 \times 10^{-1}$	0.01 (0.01)	0.179	41.9
rs12401738	1	78446761	<i>FUBP1, USP33</i>	0.021	A	G	$2.3 \times 10^{-1}$	0.97 (0.02)	0.95	0	$6.6 \times 10^{-1}$	0.00 (0.01)	0.944	0
rs11165643	1	96924097	<i>PTBP2</i>	0.022	T	C	$1.2 \times 10^{-1}$	1.03 (0.02)	0.89	0	$9.4 \times 10^{-2}$	0.02 (0.01)	0.151	47.2
rs17024393	1	110154688	<i>GNAT2, AMPD2</i>	0.066	C	T	$7.4 \times 10^{-2}$	1.11 (0.06)	0.09	54.09	$2.4 \times 10^{-1}$	0.03 (0.03)	0.084	59.6
rs543874	1	177889480	<i>SEC16B</i>	0.048	G	A	$7.5 \times 10^{-1}$	0.99 (0.02)	0.67	0	$2.4 \times 10^{-8}$	0.07 (0.01)	0.4	0
rs2820292	1	201784287	<i>NAV1</i>	0.02	C	A	$5.5 \times 10^{-2}$	1.04 (0.02)	0.35	9.32	$1.5 \times 10^{-2}$	0.02 (0.01)	0.086	59.2
rs13021737	2	632348	<i>TMEM18</i>	0.06	G	A	$9.0 \times 10^{-1}$	1.00 (0.03)	0.5	0	$2.4 \times 10^{-4}$	0.05 (0.01)	0.381	0
rs10182181	2	25150296	<i>ADCY3, POMC, NCOA1</i>	0.031	G	A	$4.5 \times 10^{-1}$	1.02 (0.02)	0.96	0	$1.8 \times 10^{-3}$	0.04 (0.01)	0.072	62
rs11126666	2	26928811	<i>KCNK3</i>	0.021	A	G	$2.9 \times 10^{-1}$	1.03 (0.03)	0.12	48.53	$7.2 \times 10^{-1}$	0.01 (0.01)	0.132	50.5
rs1016287	2	59305625	<i>LINC01122</i>	0.023	T	C	$7.7 \times 10^{-1}$	1.01 (0.02)	0.38	1.36	$1.6 \times 10^{-2}$	0.03 (0.01)	0.936	0
rs11688816	2	63053048	<i>EHBP1</i>	0.017	G	A	$8.9 \times 10^{-1}$	1.00 (0.02)	0.99	0	$2.0 \times 10^{-2}$	0.02 (0.01)	0.541	0
rs2121279	2	143043285	<i>LRP1B</i>	0.025	T	C	$5.6 \times 10^{-3}$	1.09 (0.03)	0.33	12.28	$3.9 \times 10^{-3}$	0.05 (0.01)	0.631	0
rs1528435	2	181550962	<i>UBE2E3</i>	0.018	T	C	$9.2 \times 10^{-1}$	0.99 (0.02)	0.34	10.57	$2.4 \times 10^{-1}$	0.01 (0.01)	0.736	0
rs7599312	2	213413231	<i>ERBB4</i>	0.022	G	A	$9.2 \times 10^{-1}$	0.99 (0.02)	0.24	28.64	$8.7 \times 10^{-1}$	0.00 (0.01)	0.762	0
rs6804842	3	25106437	<i>RARB</i>	0.019	G	A	$9.6 \times 10^{-1}$	0.99 (0.02)	0.05	62.17	$4.0 \times 10^{-1}$	0.01 (0.01)	0.776	0
rs2365389	3	61236462	<i>FHIT</i>	0.02	C	T	$9.2 \times 10^{-1}$	1.00 (0.02)	0.16	41.12	$3.5 \times 10^{-1}$	0.01 (0.01)	0.128	51.3
rs3849570	3	81792112	<i>GBE1</i>	0.019	A	C	$3.7 \times 10^{-1}$	1.02 (0.02)	0.82	0	$2.3 \times 10^{-1}$	0.01 (0.01)	0.724	0
rs13078960	3	85807590	<i>CADM2</i>	0.03	G	T	$5.2 \times 10^{-1}$	0.98 (0.02)	0.07	57.63	$5.0 \times 10^{-1}$	0.01 (0.01)	0.718	0
rs16851483	3	141275436	<i>RASA2</i>	0.048	T	G	$9.0 \times 10^{-1}$	0.99 (0.04)	0.55	0	$2.3 \times 10^{-4}$	0.08 (0.02)	0.757	0

rs1516725	3	185824004	<i>ETV5</i>	0.045	C	T	4.4x10 <sup>-1</sup>	1.02 (0.03)	0.95	0	2.7x10 <sup>-2</sup>	0.03 (0.01)	0.791	0
rs10938397	4	45182527	<i>GNPDA2, GABRG1</i>	0.04	G	A	1.3x10 <sup>-1</sup>	1.03 (0.02)	0.86	0	2.4x10 <sup>-3</sup>	0.03 (0.01)	0.249	28.2
rs17001654	4	77129568	<i>SCARB2</i>	0.031	G	C	2.6x10 <sup>-1</sup>	1.03 (0.03)	0.14	45.44	4.4x10 <sup>-2</sup>	0.03 (0.01)	0.004	82
rs13107325	4	103188709	<i>SLC39A8</i>	0.048	T	C	2.7x10 <sup>-1</sup>	1.05 (0.04)	0.89	0	5.7x10 <sup>-2</sup>	0.04 (0.02)	0.986	0
rs11727676	4	145659064	<i>HHIP</i>	0.036	T	C	8.1x10 <sup>-3</sup>	1.12 (0.04)	0.5	0	1.5x10 <sup>-3</sup>	0.07 (0.02)	0.875	0
rs2112347	5	75015242	<i>POC5, HMGCR, COL4A3BP</i>	0.026	T	G	4.5x10 <sup>-1</sup>	0.98 (0.02)	0.39	0	2.7x10 <sup>-2</sup>	0.02 (0.01)	0.291	19.1
rs205262	6	34563164	<i>C6orf106, SNRPC</i>	0.009	G	A	1.9x10 <sup>-1</sup>	1.03 (0.02)	0.61	0	1.2x10 <sup>-4</sup>	0.04 (0.01)	0.447	0
rs2033529	6	40348653	<i>TDRG1</i>	0.019	G	A	2.7x10 <sup>-1</sup>	1.03 (0.03)	0.95	0	2.2x10 <sup>-2</sup>	0.03 (0.01)	0.363	1.41
rs2207139	6	50845490	<i>TFAP2B</i>	0.045	G	A	4.3x10 <sup>-1</sup>	1.02 (0.03)	0.67	0	1.5x10 <sup>-2</sup>	0.03 (0.01)	0.947	0
rs9400239	6	108977663	<i>FOXO3</i>	0.019	C	T	9.5x10 <sup>-1</sup>	0.99 (0.02)	0.17	39.5	1.1x10 <sup>-2</sup>	0.03 (0.01)	0.444	0
rs13191362	6	163033350	<i>PARK2</i>	0.028	A	G	5.2x10 <sup>-1</sup>	1.02 (0.03)	0.04	63.73	6.0x10 <sup>-1</sup>	0.01 (0.01)	0.084	59.6
rs1167827	7	75163169	<i>HIP1</i>	0.02	G	A	8.3x10 <sup>-1</sup>	0.99 (0.02)	0.25	27.55	2.9x10 <sup>-1</sup>	0.01 (0.01)	0.474	0
rs2245368	7	76608143	<i>PMS2L11</i>	0.032	C	T	6.5x10 <sup>-1</sup>	0.98 (0.03)	0.93	0	3.9x10 <sup>-1</sup>	-0.02 (0.02)	0.258	26.1
rs17405819	8	76806584	<i>HNF4G</i>	0.022	T	C	4.9x10 <sup>-3</sup>	1.06 (0.02)	0.48	0	2.1x10 <sup>-2</sup>	0.02 (0.01)	0.676	0
rs2033732	8	85079709	<i>RALYL</i>	0.019	C	T	6.4x10 <sup>-1</sup>	1.01 (0.02)	0.82	0	2.5x10 <sup>-1</sup>	-0.02 (0.01)	0.349	5.05
rs4740619	9	15634326	<i>C9orf93</i>	0.018	T	C	7.2x10 <sup>-1</sup>	1.01 (0.02)	0.83	0	2.0x10 <sup>-1</sup>	0.01 (0.01)	0.65	0
rs10968576	9	28414339	<i>LINGO2</i>	0.025	G	A	8.3x10 <sup>-2</sup>	1.04 (0.02)	0.81	0	1.5x10 <sup>-4</sup>	0.04 (0.01)	0.367	0.18

rs6477694	9	111932342	<i>EPB41L4B</i>	0.017	C	T	$8.3 \times 10^{-1}$	1.00 (0.02)	0.81	0	$7.1 \times 10^{-1}$	0.00 (0.01)	0.02	74.5
rs1928295	9	120378483	<i>TLR4</i>	0.019	T	C	$6.5 \times 10^{-1}$	1.01 (0.02)	0.85	0	$7.0 \times 10^{-1}$	0.00 (0.01)	0.582	0
rs10733682	9	129460914	<i>LMX1</i>	0.017	A	G	$5.0 \times 10^{-1}$	1.01 (0.02)	0.7	0	$5.3 \times 10^{-1}$	0.01 (0.01)	0.479	0
rs7899106	10	87410904	<i>GRID1</i>	0.04	G	A	$3.6 \times 10^{-1}$	1.04 (0.05)	0.66	0	$2.5 \times 10^{-1}$	0.03 (0.02)	0.53	0
rs17094222	10	102395440	<i>HIF1AN</i>	0.025	C	T	$4.6 \times 10^{-1}$	0.98 (0.02)	0.38	1.52	$1.2 \times 10^{-2}$	0.03 (0.01)	0.175	42.6
rs11191560	10	104869038	<i>NT5C2</i>	0.031	C	T	$1.4 \times 10^{-1}$	1.05 (0.04)	0.62	0	$4.1 \times 10^{-3}$	0.05 (0.02)	0.813	0
rs7903146	10	115022404	<i>TCF7</i>	0.023	C	T	$9.0 \times 10^{-4}$	1.08 (0.02)	0.24	28.21	$1.4 \times 10^{-1}$	0.02 (0.01)	0.729	0
rs4256980	11	8673939	<i>TRIM66, TUB</i>	0.021	G	C	$3.9 \times 10^{-2}$	1.04 (0.02)	0.7	0	$4.9 \times 10^{-1}$	0.99 (0.01)	0.026	72.7
rs11030104	11	27684517	<i>BDNF</i>	0.041	A	G	$4.5 \times 10^{-2}$	1.05 (0.02)	0.28	32.61	$2.3 \times 10^{-2}$	0.03 (0.01)	0.179	42
rs2176598	11	43864278	<i>HSD17B12</i>	0.02	T	C	$2.7 \times 10^{-1}$	0.97 (0.02)	0.26	24.52	$9.9 \times 10^{-1}$	0.00 (0.01)	0.306	15.6
rs3817334	11	47650993	<i>MTCH2, C1QTNF4, SPI1, CELF1</i>	0.026	T	C	$1.7 \times 10^{-1}$	1.03 (0.02)	0.99	0	$2.7 \times 10^{-3}$	0.03 (0.01)	0.205	36.9
rs12286929	11	115022404	<i>CADM1</i>	0.022	G	A	$1.0 \times 10^{-1}$	1.00 (0.02)	0.55	0	$9.7 \times 10^{-2}$	0.02 (0.01)	0.556	0
rs7138803	12	50247468	<i>BCDIN, FAIM</i>	0.032	A	G	$3.4 \times 10^{-1}$	1.02 (0.02)	0.47	0	$3.0 \times 10^{-3}$	0.03 (0.01)	0.456	0
rs11057405	12	122781897	<i>CLIP1</i>	0.031	G	A	$4.7 \times 10^{-1}$	1.02 (0.04)	0.62	0	$4.3 \times 10^{-3}$	0.05 (0.02)	0.181	41.6
rs9581854 <sup>4</sup>	13	28017782	<i>MTIF3, GTF3A</i>	0.03	T	C	$6.4 \times 10^{-2}$	1.05 (0.02)	0.25	26.73	$2.8 \times 10^{-2}$	0.03 (0.01)	0.396	0
rs12429545	13	54102206	<i>OLFM4</i>	0.033	A	G	$4.2 \times 10^{-2}$	1.07 (0.03)	0.69	0	$1.3 \times 10^{-2}$	0.09 (0.03)	0.633	0
rs10132280	14	25928179	<i>STXBP6</i>	0.023	C	A	$7.8 \times 10^{-1}$	0.99 (0.02)	0.78	0	$1.6 \times 10^{-1}$	0.01 (0.01)	0.639	0
rs12885454	14	29736838	<i>FOXG1, PRKD1</i>	0.021	C	A	$2.5 \times 10^{-1}$	1.02 (0.02)	0.94	0	$4.3 \times 10^{-2}$	0.02 (0.01)	0.893	0
rs11847697	14	30515112	<i>PRKD1</i>	0.049	T	C	$1.4 \times 10^{-1}$	1.09 (0.06)	0.75	0	$3.2 \times 10^{-1}$	0.03 (0.03)	0.261	25.6
rs7141420	14	79899454	<i>NRXN3</i>	0.024	T	C	$6.6 \times 10^{-2}$	1.04 (0.02)	0.26	25.36	$1.7 \times 10^{-3}$	0.04 (0.01)	0.121	52.7
rs3736485	15	51748610	<i>DMXL2</i>	0.018	A	G	$7.8 \times 10^{-1}$	0.99 (0.02)	0.47	0	$1.5 \times 10^{-1}$	0.01 (0.01)	0.897	0
rs16951275	15	68077168	<i>MAP2K5, LBXCOR</i>	0.031	T	C	$4.4 \times 10^{-2}$	1.05 (0.02)	0.74	0	$2.6 \times 10^{-3}$	0.04 (0.01)	0.026	72.6
rs758747	16	3627358	<i>NLRC3</i>	0.023	T	C	$9.8 \times 10^{-1}$	1.00 (0.02)	0.8	0	$8.7 \times 10^{-3}$	0.03 (0.01)	0.171	43.4
rs12446632	16	19935389	<i>GPRC5B, IQCK</i>	0.04	G	A	$1.0 \times 10^{-1}$	1.05 (0.03)	0.19	36.75	$2.7 \times 10^{-3}$	0.04 (0.01)	0.53	0

rs2650492	16	28333411	<i>SBK1</i>	0.021	A	G	$6.7 \times 10^{-3}$	1.08 (0.03)	0.94	0	$8.4 \times 10^{-2}$	0.02 (0.01)	0.343	6.52
rs3888190	16	28889486	<i>ATXN2, SBK1, SULTA2, TUFM</i>	0.031	A	C	$3.1 \times 10^{-3}$	1.06 (0.02)	0.32	13.27	$7.3 \times 10^{-4}$	0.03 (0.01)	0.474	0
rs9925964	16	31129895	<i>KAT8</i>	0.019	A	G	$8.3 \times 10^{-2}$	1.03 (0.02)	0.67	0	$5.7 \times 10^{-2}$	0.02 (0.01)	0.088	59
rs1558902	16	53803574		0.082	A	T	$2.8 \times 10^{-2}$	1.05 (0.02)	0.04	64.35	$2.0 \times 10^{-18}$	0.09 (0.01)	0.447	0
rs1000940	17	5283252	<i>RABEP</i>	0.019	G	A	$3.2 \times 10^{-1}$	1.02 (0.02)	0.95	0	$1.5 \times 10^{-1}$	0.01 (0.01)	0.589	0
rs12940622	17	78615571	<i>RPTOR</i>	0.018	G	A	$8.0 \times 10^{-2}$	1.04 (0.02)	0.45	0	$1.1 \times 10^{-1}$	0.02 (0.01)	0.445	0
rs1808579	18	21104888	<i>NPC1, C18orf8</i>	0.017	C	T	$1.3 \times 10^{-1}$	1.03 (0.02)	0.83	0	$3.2 \times 10^{-2}$	0.02 (0.01)	0.635	0
rs7243357	18	56883319	<i>GRP</i>	0.022	T	G	$2.3 \times 10^{-1}$	1.03 (0.03)	0.74	0	$2.5 \times 10^{-2}$	0.03 (0.01)	0.324	11.3
rs6567160	18	57829135	<i>MC4R</i>	0.056	C	T	$3.0 \times 10^{-1}$	1.02 (0.02)	0.08	54.86	$8.1 \times 10^{-11}$	0.08 (0.01)	0.829	0
rs17724992	19	18454825	<i>PGPEP1</i>	0.019	A	G	$8.3 \times 10^{-4}$	1.08 (0.02)	0.29	19.86	$1.0 \times 10^{-2}$	0.03 (0.01)	0.844	0
rs29941	19	34309532	<i>KCTD1</i>	0.018	G	A	$6.6 \times 10^{-1}$	1.01 (0.02)	0.36	7.08	$1.8 \times 10^{-2}$	0.02 (0.01)	0.356	3.27
<b>rs2075650</b>	<b>19</b>	<b>45395619</b>	<b><i>TOMM40, APOE, APOC1</i></b>	<b>0.026</b>	<b>A</b>	<b>G</b>	<b><math>2.4 \times 10^{-4}</math></b>	<b>1.13 (0.03)</b>	<b>0.25</b>	<b>26.82</b>	<b><math>2.9 \times 10^{-1}</math></b>	<b>0.02 (0.01)</b>	<b>0.503</b>	<b>0</b>
rs2287019	19	46202172	<i>QPCTL, GIPR</i>	0.036	C	T	$1.8 \times 10^{-1}$	1.03 (0.03)	0.35	8.06	$9.8 \times 10^{-4}$	0.05 (0.01)	0.555	0
rs3810291	19	47569003	<i>ZC3H4</i>	0.028	A	G	$3.7 \times 10^{-1}$	1.02 (0.02)	0.06	58.58	$2.3 \times 10^{-2}$	0.02 (0.01)	0.929	0

<sup>1</sup>All SNPs had reached genome-wide significance in the primary BMI analysis by Locke et al., 2015 (2) *i.e.* SNPs significantly associated with BMI in secondary or conditional analyses, or analyses including other ancestries were not included here

<sup>2</sup> Genes notable for biological relevance as reported in Locke et al., 2015 (2).

<sup>3</sup> SNP-BMI regression coefficients as presented by the GIANT consortium (Locke et al., 2015) (2), for an inverse-normalised transformation of BMI; the effects on the kg/m<sup>2</sup> scale cannot be derived.

<sup>4</sup> Perfect proxy ( $r^2=1$ ) for BMI SNP rs12016871.

**Supplementary Table 4.** Association of 47 waist-hip ratio (WHR) SNPs with endometrial cancer risk. The single SNP passing the study-wide significance threshold for significant association with endometrial cancer is highlighted in bold.

SNP <sup>1</sup>	CHR	Build19 Position	Nearest Gene	Combined effect size <sup>2</sup>	Effect size in women only <sup>2</sup>
SNPs associated with WHR at a genome-wide level of significance in women					
rs2645294	1	119574587	<i>TBX15-WARS2</i>	0.031	0.035
rs905938	1	154991389	<i>DCST2</i>	0.025	0.034
rs10919388	1	170372503	<i>GORAB</i>	0.024	0.033
rs714515	1	172352990	<i>DNM3-PIGC</i>	0.027	0.029
rs2820443	1	219753509	<i>LYPLAL1</i>	0.035	0.062
rs10195252	2	165513091	<i>GRB14-COBLI1</i>	0.027	0.052
rs17819328	3	12489342	<i>PPARG</i>	0.021	0.035
rs2276824	3	52637486	<i>PBRM1</i>	0.024	0.028
rs2371767	3	64718258	<i>ADAMTS9</i>	0.036	0.056
rs10804591	3	129334233	<i>PLXND1</i>	0.025	0.04
rs3805389	4	56482750	<i>NMU</i>	0.012	0.027
rs9991328	4	89713121	<i>FAM13A</i>	0.019	0.028
rs9687846	5	55861894	<i>MAP3K1</i>	0.024	0.041
rs1045241	5	118729286	<i>TNFAIP8-HSD17B4</i>	0.019	0.035
rs7705502	5	173320815	<i>CPEB4</i>	0.027	0.027
rs1294410	6	6738752	<i>LY86</i>	0.031	0.037
rs1776897	6	34195011	<i>BTNL2</i>	0.03	0.052
rs1358980	6	43764551	<i>VEGFA</i>	0.039	0.06
rs1936805	6	127452116	<i>RSPO3</i>	0.043	0.052
rs10245353	7	25858614	<i>NFE2L3</i>	0.035	0.041
rs7830933	8	23603324	<i>NKX2-6</i>	0.022	0.037
rs12679556	8	72514228	<i>MSC</i>	0.027	0.033
rs10991437	9	107735920	<i>ABCA1</i>	0.031	0.04
rs7917772	10	104487443	<i>SFXN2</i>	0.014	0.027
rs11231693	11	63862612	<i>MACROD1-VEGFB</i>	0.041	0.068
<b>rs10842707</b>	<b>12</b>	<b>26471364</b>	<b><i>ITPR2-SSPN</i></b>	<b>0.032</b>	<b>0.041</b>
rs1443512	12	54342684	<i>HOXC13</i>	0.028	0.04
rs4765219	12	124440110	<i>CCDC92</i>	0.028	0.037
rs2925979	16	81534790	<i>CMIP</i>	0.018	0.032
rs4646404	17	17420199	<i>PEMT</i>	0.027	0.034
rs8066985	17	68453345	<i>KCNJ2</i>	0.018	0.026
rs12454712	18	60845884	<i>BCL2</i>	0.016	0.035
rs6090583	20	45558831	<i>EYA2</i>	0.022	0.029
rs2294239	22	29449477	<i>ZNRF3</i>	0.025	0.028

Additional WHR-associated SNPs GWS in sex-combined analyses

SNP <sup>1</sup>	CHR	Build19 Position	Nearest Gene	Combined effect size <sup>2</sup>	Effect size in women only <sup>2</sup>
rs1385167	2	66200648	<i>MEIS1</i>	0.029	0.023
rs1569135	2	188115398	<i>CALCRL</i>	0.021	0.023
rs17451107	3	156797609	<i>LEKR1</i>	0.026	0.023
rs303084	4	124066948	<i>SPATA5-FGF2</i>	0.023	0.029
rs6556301	5	176527577	<i>FGFR4</i>	0.022	0.018
rs7801581	7	27223771	<i>HOXA11</i>	0.027	0.025
rs8042543	15	31708263	<i>KLF13</i>	0.026	0.023
rs8030605	15	56504598	<i>RFX7</i>	0.03	0.031
rs1440372	15	67033151	<i>SMAD6</i>	0.024	0.022
rs12608504	19	18389135	<i>JUND</i>	0.022	0.017
rs4081724	19	33824946	<i>CEBPA</i>	0.035	0.033
rs979012	20	6623374	<i>BMP2</i>	0.027	0.026
rs224333	20	34023962	<i>GDF5</i>	0.02	0.009

<sup>1</sup> All SNPs had reached genome-wide significance in the primary WHR analysis by Shungin et al. (20

<sup>2</sup> Effect size overall and in women as reported in Shungin et al. (2015) (2).



k

rial cancer risk ( $0.05/124=4.0 \times 10^{-4}$ ) is shown in bold.

Effect allele	Other allele	P-value	OR (SE)	Q	I
T	C	$9.8 \times 10^{-1}$	1.00 (0.00)	0.8214	0
T	C	$1.5 \times 10^{-1}$	0.97 (0.02)	0.9711	0
C	A	$2.4 \times 10^{-2}$	1.06 (0.03)	0.8649	0
G	A	$7.0 \times 10^{-1}$	1.01 (0.03)	0.2838	21.07
T	C	$5.0 \times 10^{-4}$	0.92 (0.02)	0.9872	0
T	C	$1.9 \times 10^{-1}$	0.97 (0.02)	0.956	0
G	T	$6.7 \times 10^{-1}$	0.99 (0.02)	0.7251	0
C	T	$6.1 \times 10^{-1}$	1.01 (0.02)	0.8992	0
G	T	$2.1 \times 10^{-1}$	1.03 (0.02)	0.4872	0
A	C	$5.8 \times 10^{-1}$	1.01 (0.02)	0.691	0
A	G	$2.6 \times 10^{-1}$	0.97 (0.03)	0.1325	46.48
T	C	$7.6 \times 10^{-1}$	1.01 (0.03)	0.1946	36.26
A	G	$7.8 \times 10^{-1}$	1.01 (0.04)	0.9855	0
C	T	$6.5 \times 10^{-1}$	1.01 (0.02)	0.3147	15.43
A	G	$2.2 \times 10^{-2}$	1.05 (0.02)	0.243	28.17
C	G	$8.8 \times 10^{-1}$	0.99 (0.02)	0.6998	0
G	T	$5.5 \times 10^{-1}$	0.98 (0.03)	0.47	0
T	C	$9.0 \times 10^{-1}$	0.99 (0.02)	0.4741	0
T	C	$4.0 \times 10^{-2}$	0.96 (0.02)	0.2482	27.29
A	G	$4.5 \times 10^{-1}$	0.98 (0.03)	0.4852	0
A	G	$4.3 \times 10^{-1}$	1.02 (0.03)	0.5918	0
G	T	$5.2 \times 10^{-1}$	1.02 (0.03)	0.2768	22.32
A	C	$2.9 \times 10^{-2}$	0.93 (0.03)	0.5853	0
A	G	$5.1 \times 10^{-1}$	1.01 (0.02)	0.389	0.57
A	G	$2.5 \times 10^{-1}$	0.95 (0.04)	0.7827	0
<b>T</b>	<b>C</b>	<b><math>3.7 \times 10^{-4}</math></b>	<b>1.09 (0.02)</b>	<b>0.6478</b>	<b>0</b>
A	G	$6.1 \times 10^{-1}$	1.01 (0.02)	0.5473	0
C	A	$4.2 \times 10^{-1}$	0.98 (0.02)	0.7768	0
T	C	$6.7 \times 10^{-1}$	1.01 (0.02)	0.1047	51.19
G	A	$9.2 \times 10^{-2}$	1.04 (0.02)	0.6372	0
A	G	$6.1 \times 10^{-1}$	1.01 (0.02)	0.6208	0
T	C	$9.3 \times 10^{-1}$	0.99 (0.02)	0.4566	0
A	G	$2.0 \times 10^{-1}$	1.03 (0.02)	0.2281	30.69
A	G	$4.5 \times 10^{-1}$	1.02 (0.02)	0.7895	0

<b>Effect allele</b>	<b>Other allele</b>	<b>P-value</b>	<b>OR (SE)</b>	<b>Q</b>	<b>I</b>
G	A	$9.3 \times 10^{-1}$	1.00 (0.02)	0.658	0
A	G	$2.3 \times 10^{-2}$	1.05 (0.02)	0.1328	46.43
T	C	$2.6 \times 10^{-1}$	1.02 (0.02)	0.8886	0
A	G	$5.4 \times 10^{-3}$	0.93 (0.03)	0.3866	1.09
T	G	$3.1 \times 10^{-1}$	0.98 (0.02)	0.0804	55.54
T	C	$3.0 \times 10^{-1}$	0.97 (0.02)	0.0123	72.45
C	T	$9.9 \times 10^{-1}$	1.00 (0.00)	0.014	71.75
A	G	$5.6 \times 10^{-1}$	0.98 (0.03)	0.9006	0
C	T	$5.4 \times 10^{-1}$	1.02 (0.03)	0.7011	0
A	G	$2.6 \times 10^{-1}$	1.02 (0.03)	0.4026	0
G	A	$1.3 \times 10^{-1}$	1.04 (0.03)	0.8044	0
T	C	$9.2 \times 10^{-2}$	1.04 (0.02)	0.7525	0
G	A	$1.3 \times 10^{-1}$	1.03 (0.01)	0.5973	0

15) (2) *i.e.* SNPs significantly associated with WHR in secondary or conditional analyses, or analyses



including other ancestries were not included here.

