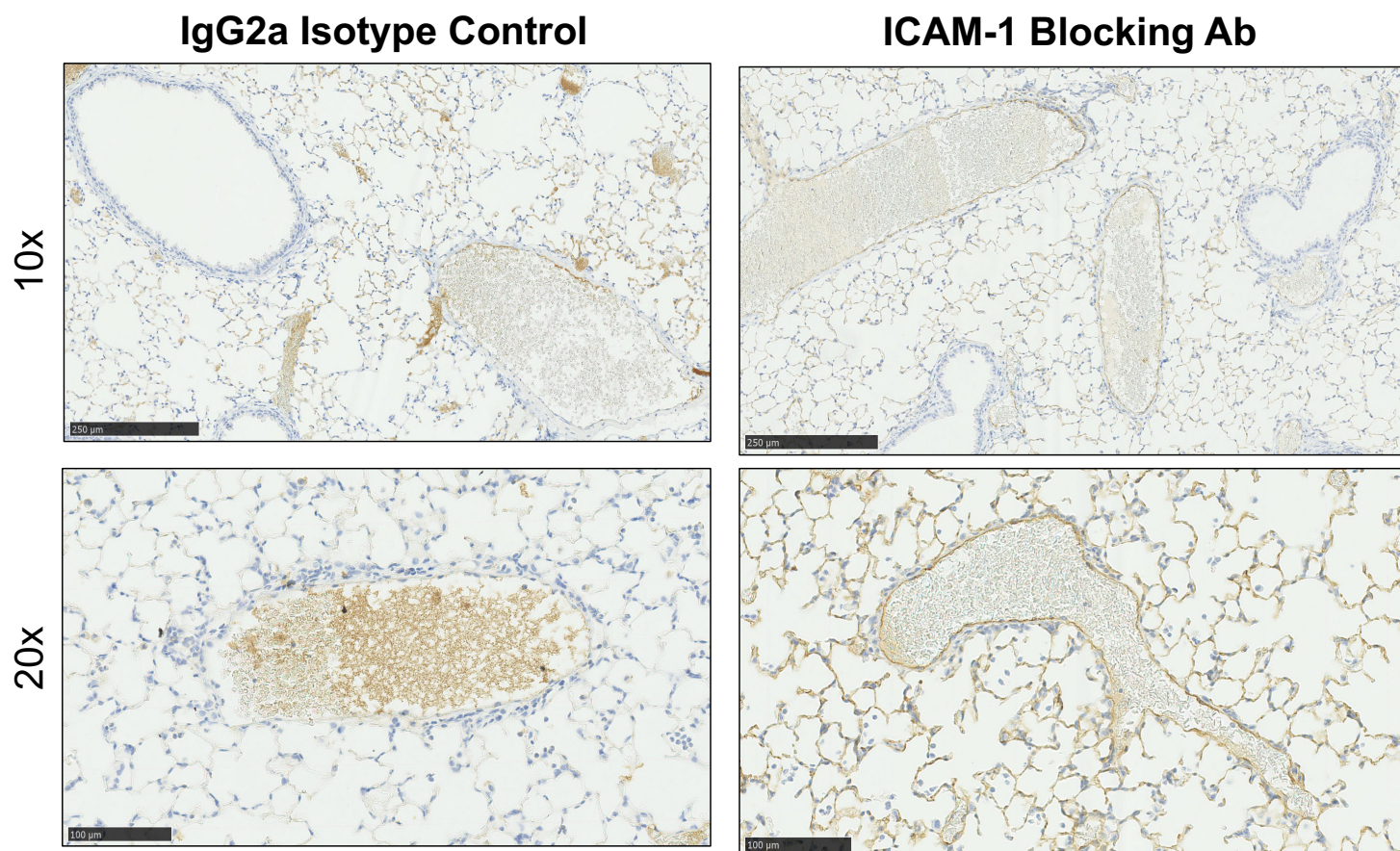


Supplemental Figure 4. Penetration of blocking ICAM-1 antibody into murine lungs.



Mice were pre-treated with 2 doses of 75 μg IgG2a isotype control or ICAM-1 blocking antibody (clone KAT-1) via an intra-peritoneal route prior to intranasal challenge with 3.437 μg LPS for 24 h.

Confirmation that ICAM-1 blocking antibody or matched isotype control had reached the lung was achieved by staining lung sections from treated mice with rabbit anti-rat secondary antibody and developing with DAB (brown staining), followed by nuclear counter-staining. Images are shown at 10x and 20x objective as denoted by the scale bar.