

Figure legends

Fig 1: Flow diagram showing the selection of reports included in the review.

Fig 2: Summary of results of Quality Assessment of Diagnostic Accuracy Studies (QUADAS) tool for articles included in the present analysis showing the proportion of cohort studies with low, high or unclear risk of bias and concerns regarding applicability.

Fig 3. Forest plots of overall sensitivity and specificity of ultrasonography in the prenatal diagnosis of invasive placentation according to the current analysis in retrospective studies. Only first author's name is given for each reference.

Fig 4. Forest plots of overall sensitivity and specificity of ultrasonography in the prenatal diagnosis of invasive placentation according to the current analysis in prospective studies. Only first author's name is given for each reference.

Flow chart Fig 1

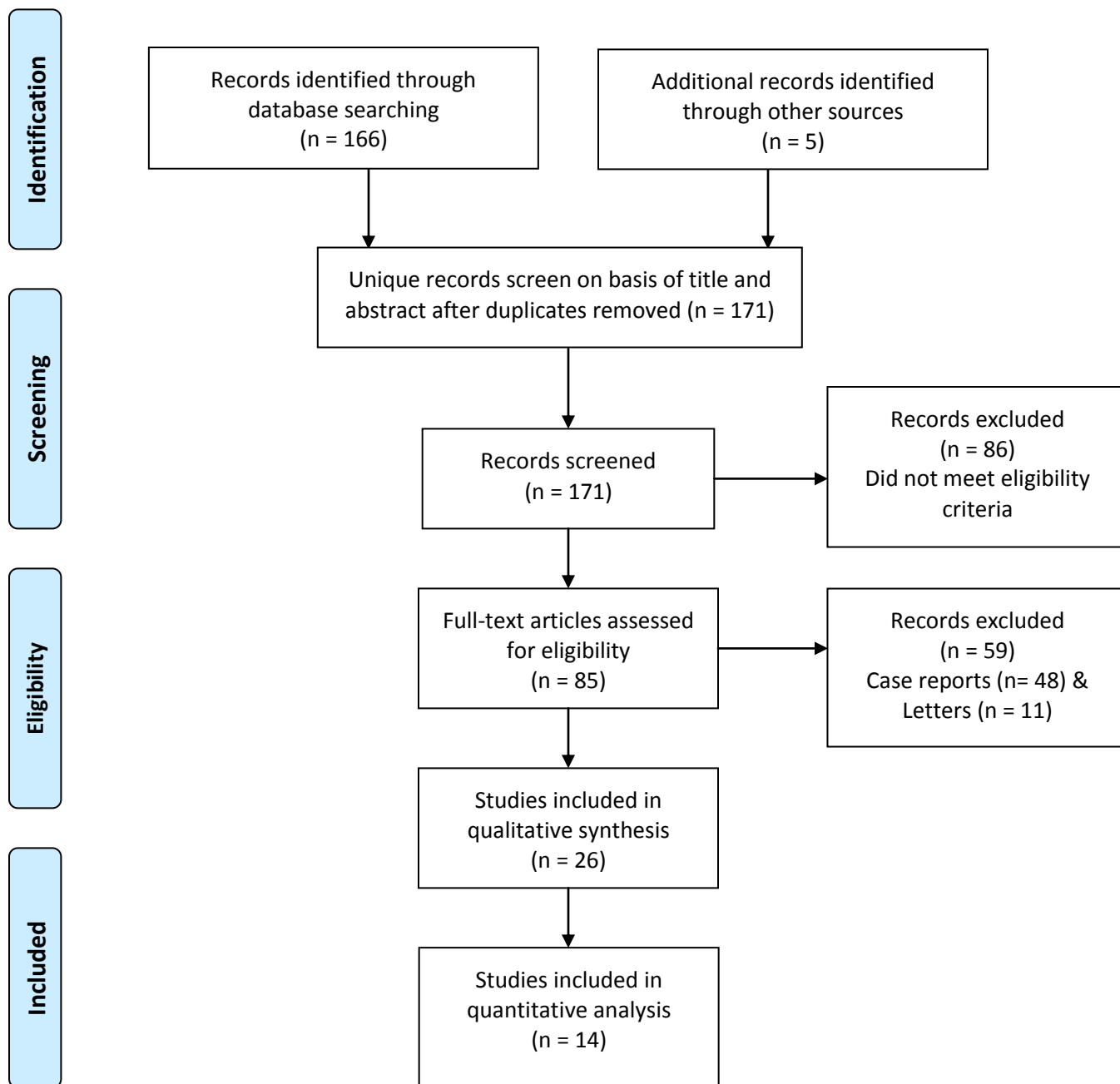


Figure 2
[Click here to download high resolution image](#)

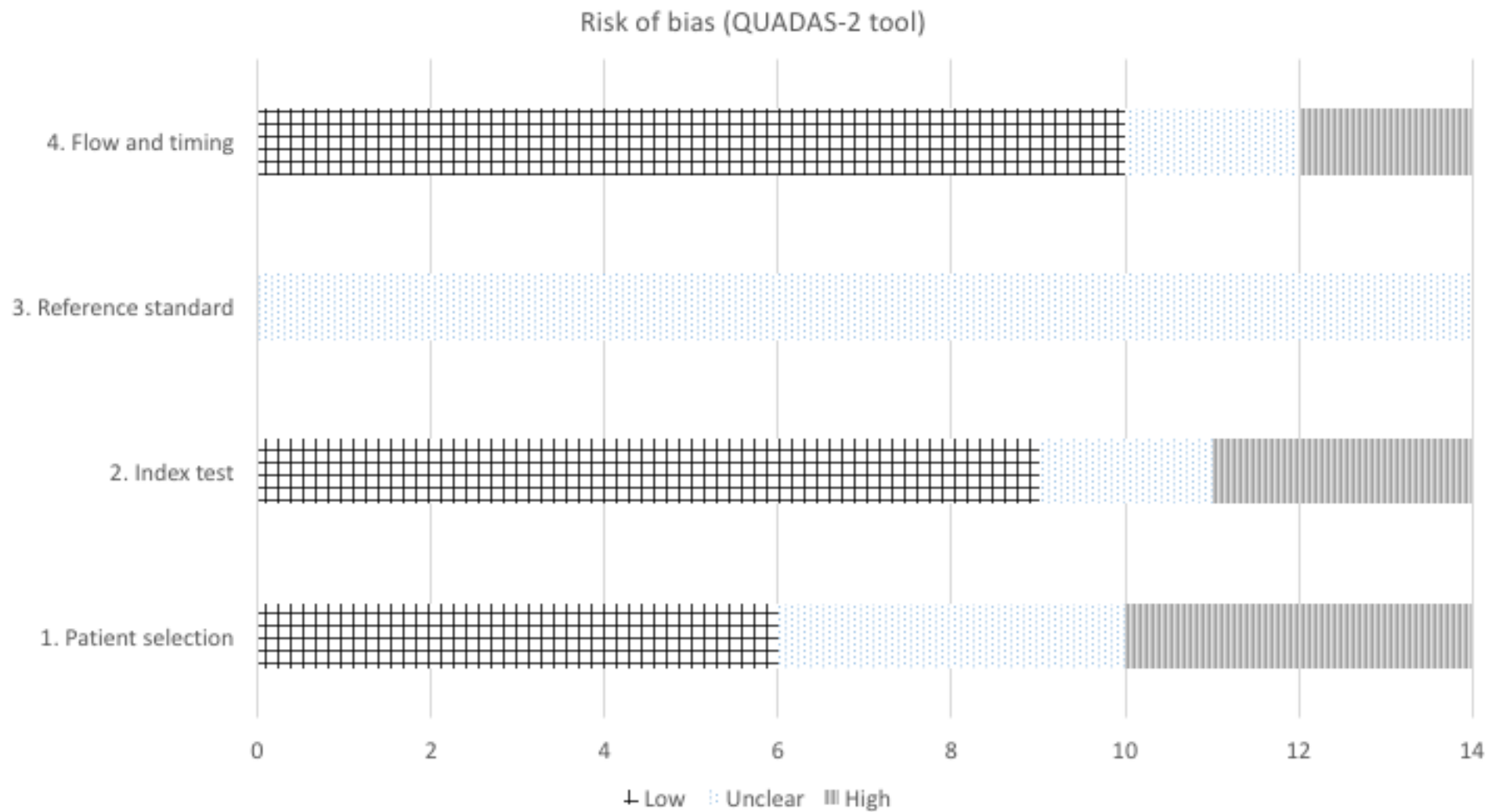


Figure 3A

[Click here to download high resolution image](#)

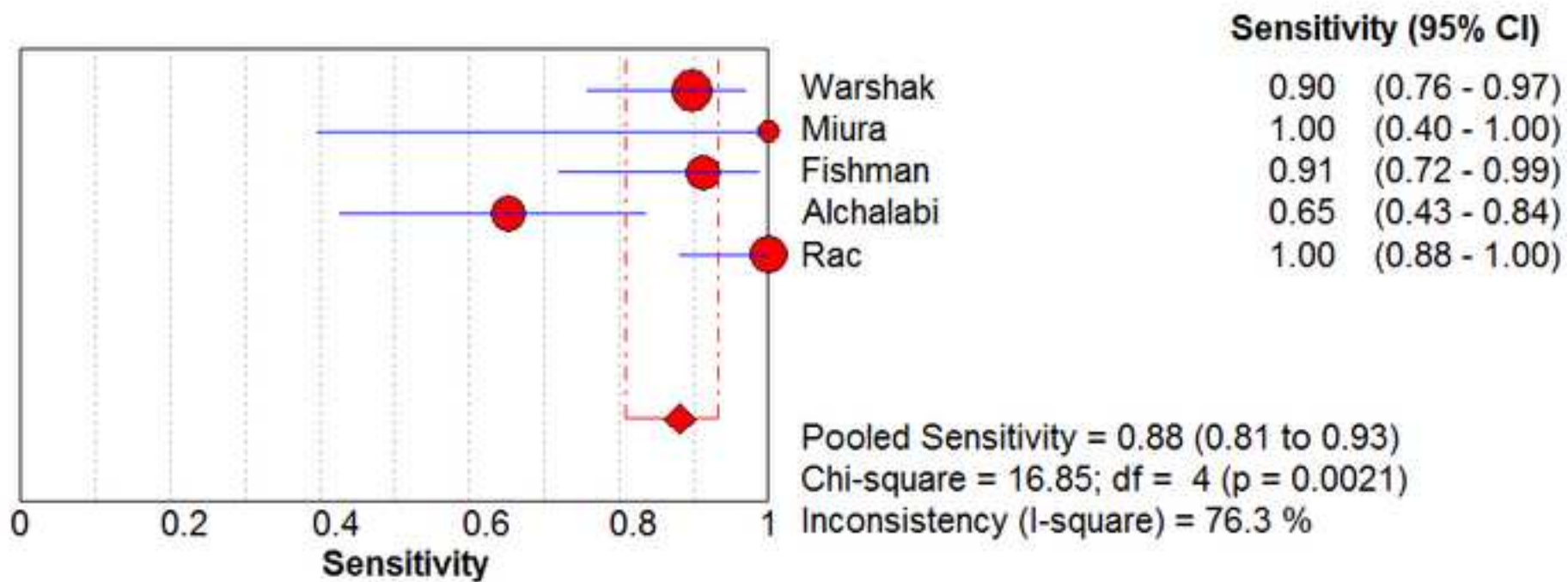


Figure 3B

[Click here to download high resolution image](#)

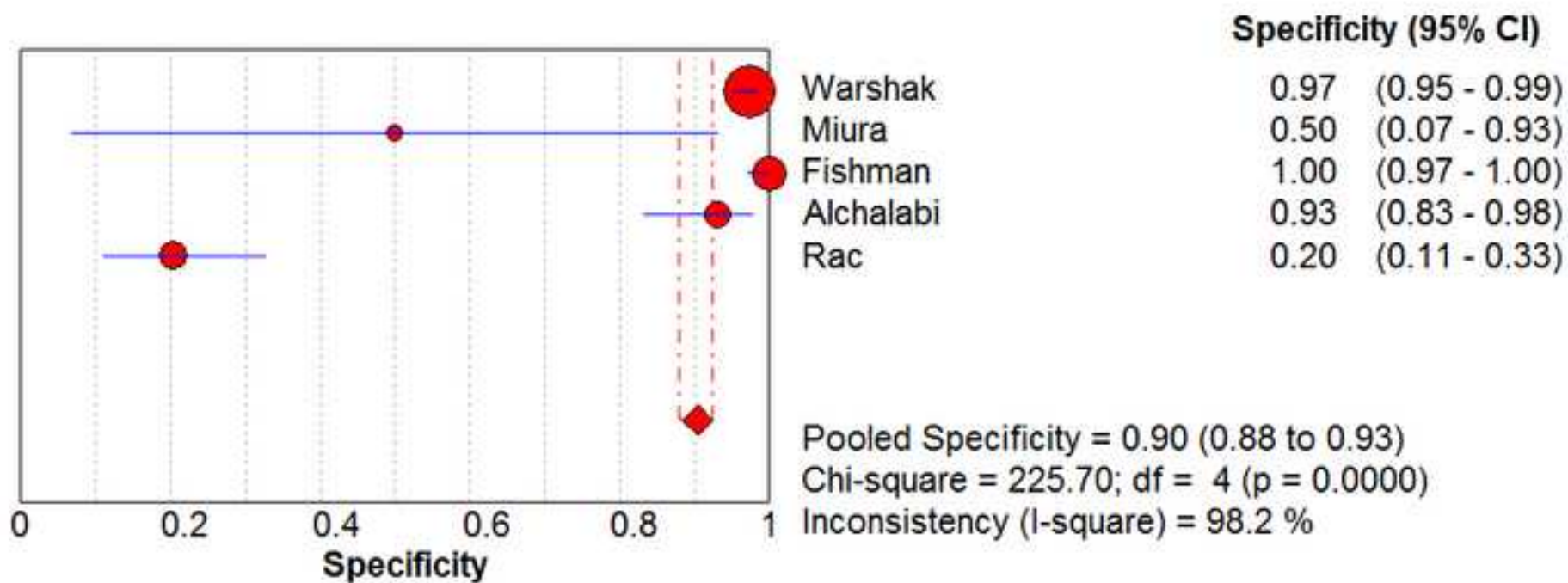


Figure 3C

[Click here to download high resolution image](#)

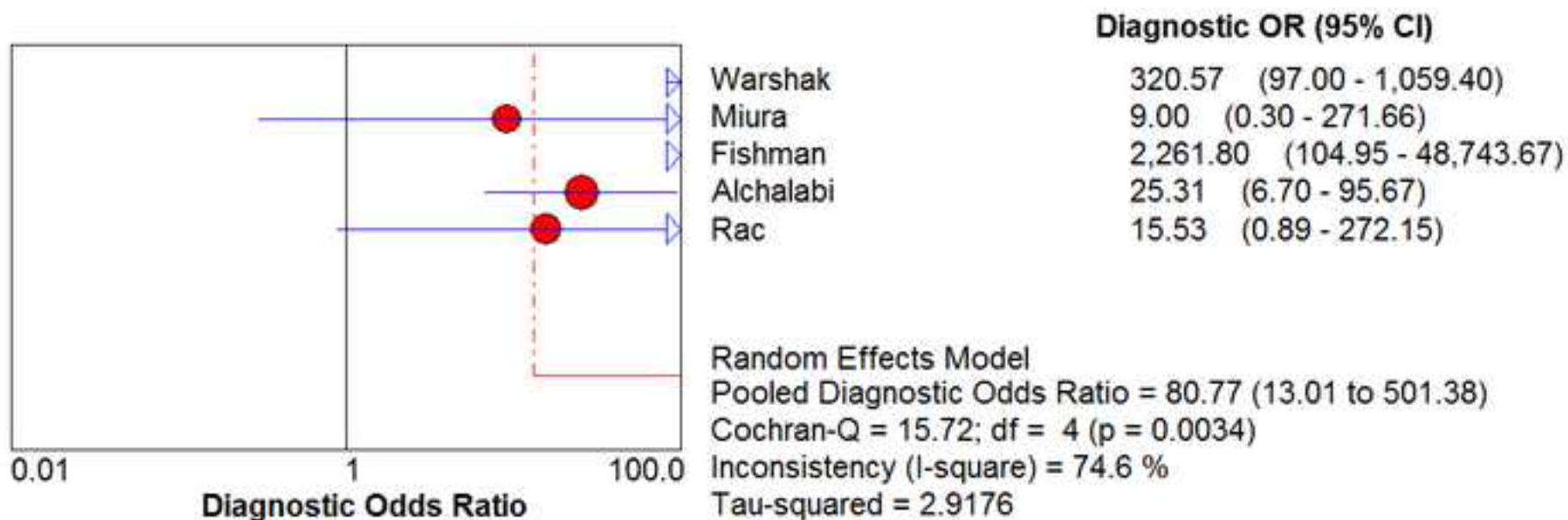


Figure 4A

[Click here to download high resolution image](#)

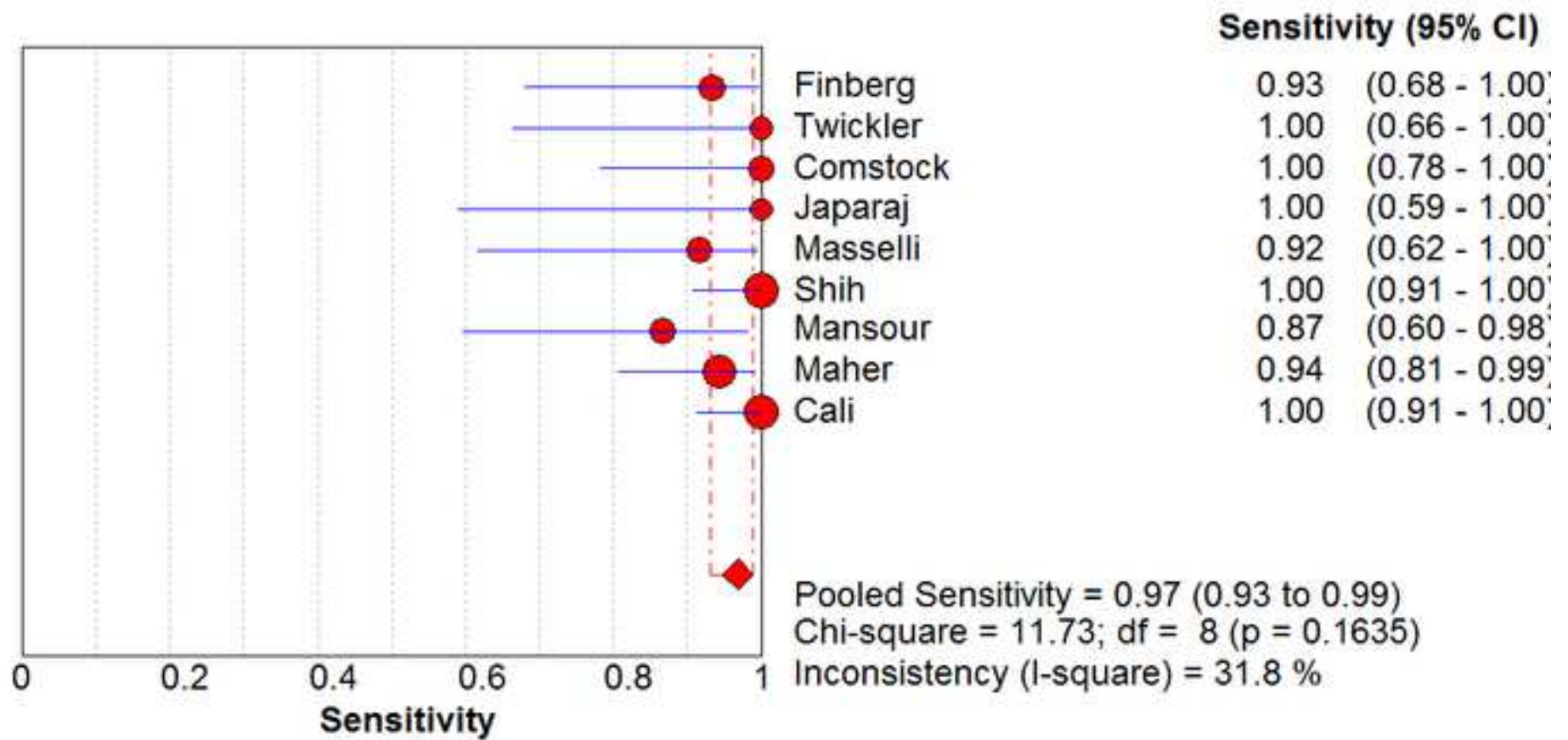


Figure 4B

[Click here to download high resolution image](#)

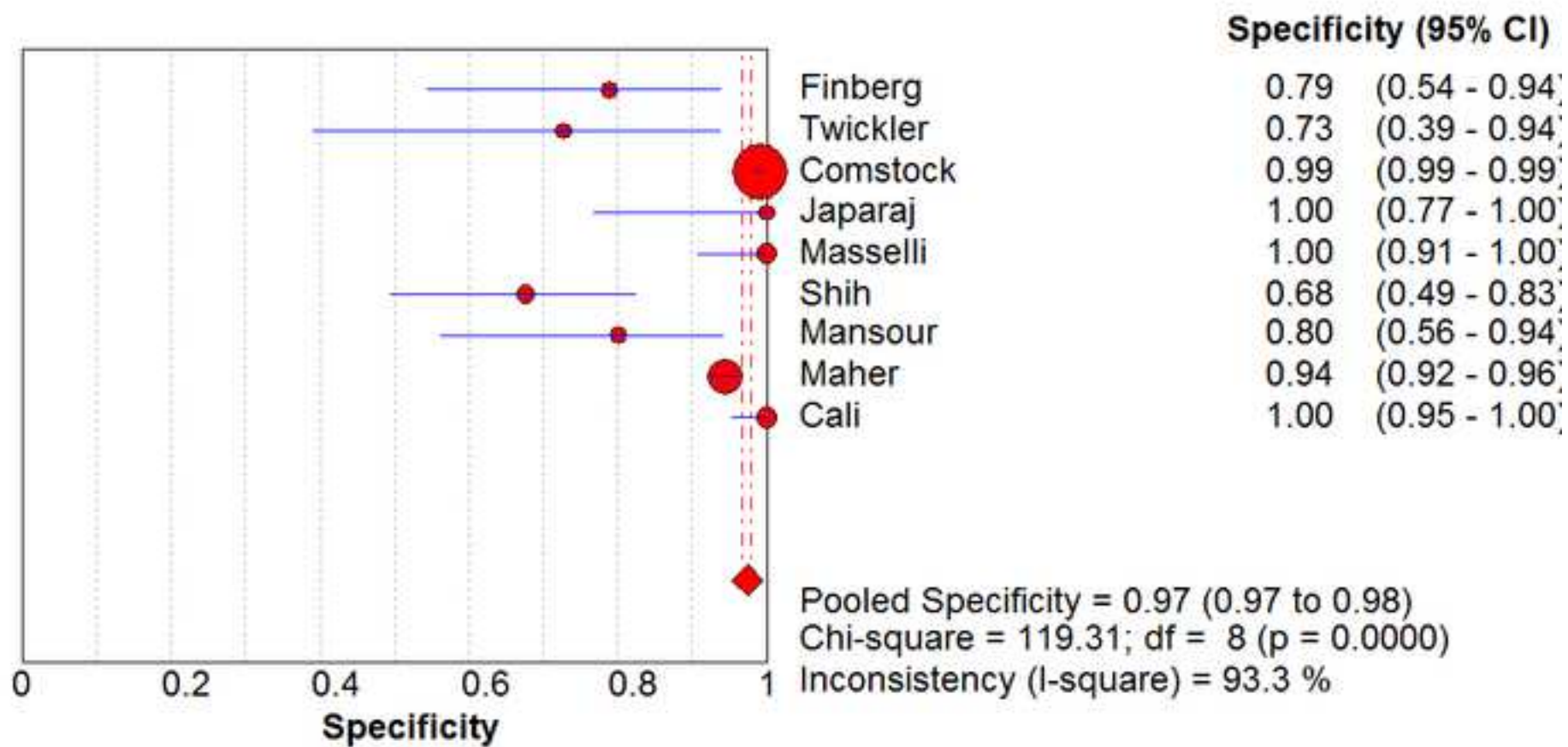
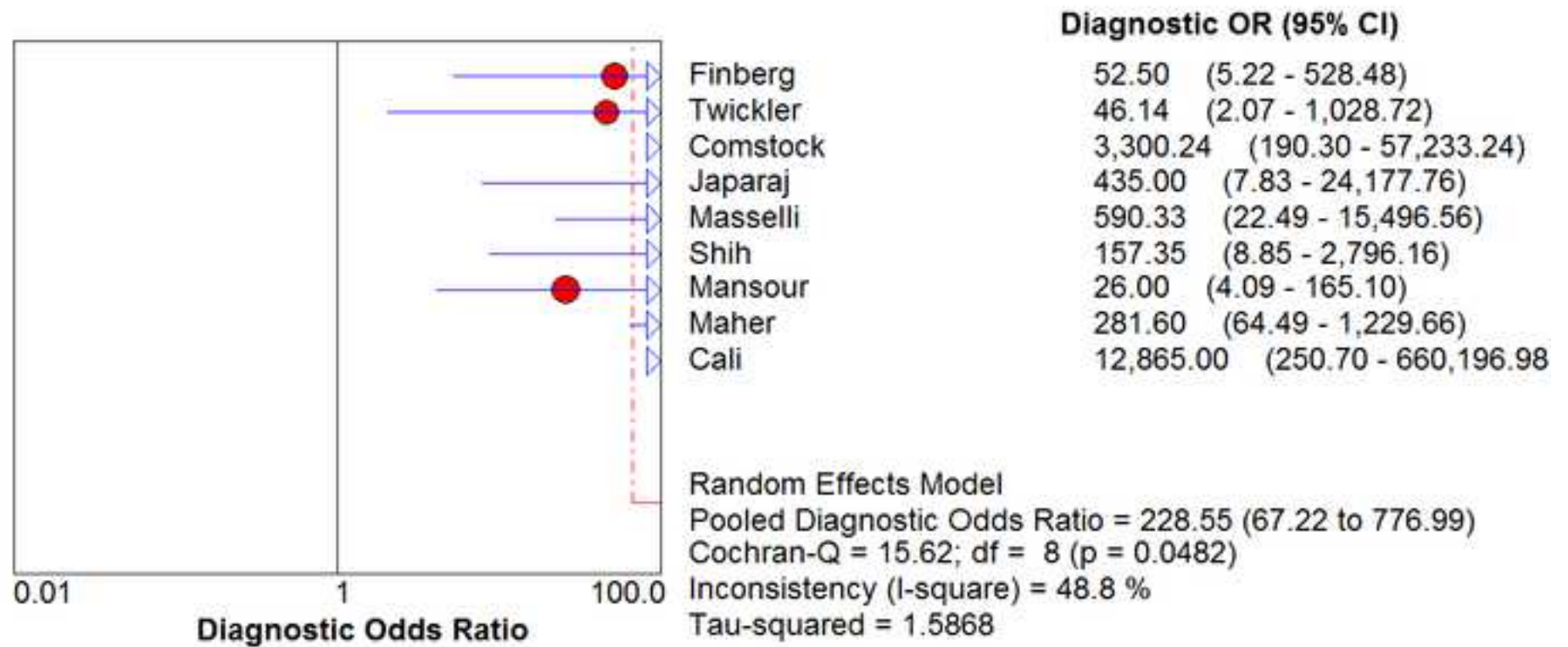


Figure 4C

[Click here to download high resolution image](#)



Checklist Prisma

[Click here to download Checklist: Jauniaux & Bhide PRISMA 2009 checklist.doc](#)