

Figure legends

Figure 1. Flowchart showing the selection process.

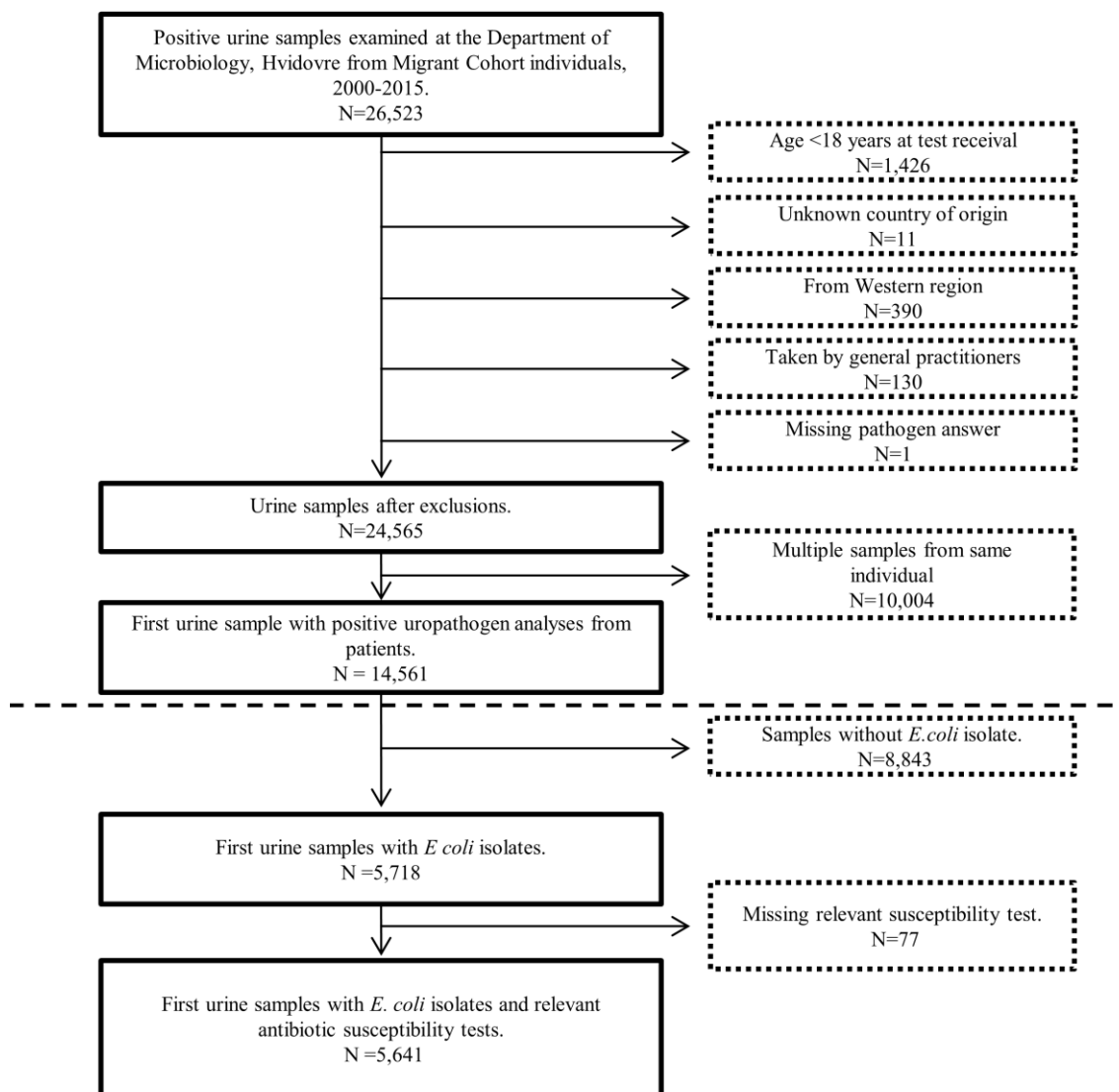


Figure 2. Antibiotic susceptibility among *E. coli* isolates in first urine samples from migrants and non-migrants from 2000-2015.

OR adjusted for test year, Charlson index, income, sex and age at test.

OR; Odds Ratio. CI; Confidence Interval. R/No. total; Resistant isolates / Total number of isolates tested. SXT; Sulfamethoxazol-Trimethoprim. CIP; Ciprofloxacin. GEN; Gentamicin. CXM; Cefuroxim. TZP; Piperacillin-Tazobactam. AMP; Ampicillin.

*Significant difference between OR for family reunited and refugees. (SXT p<0.001. GEN p=0.004. AMP p=0.002)

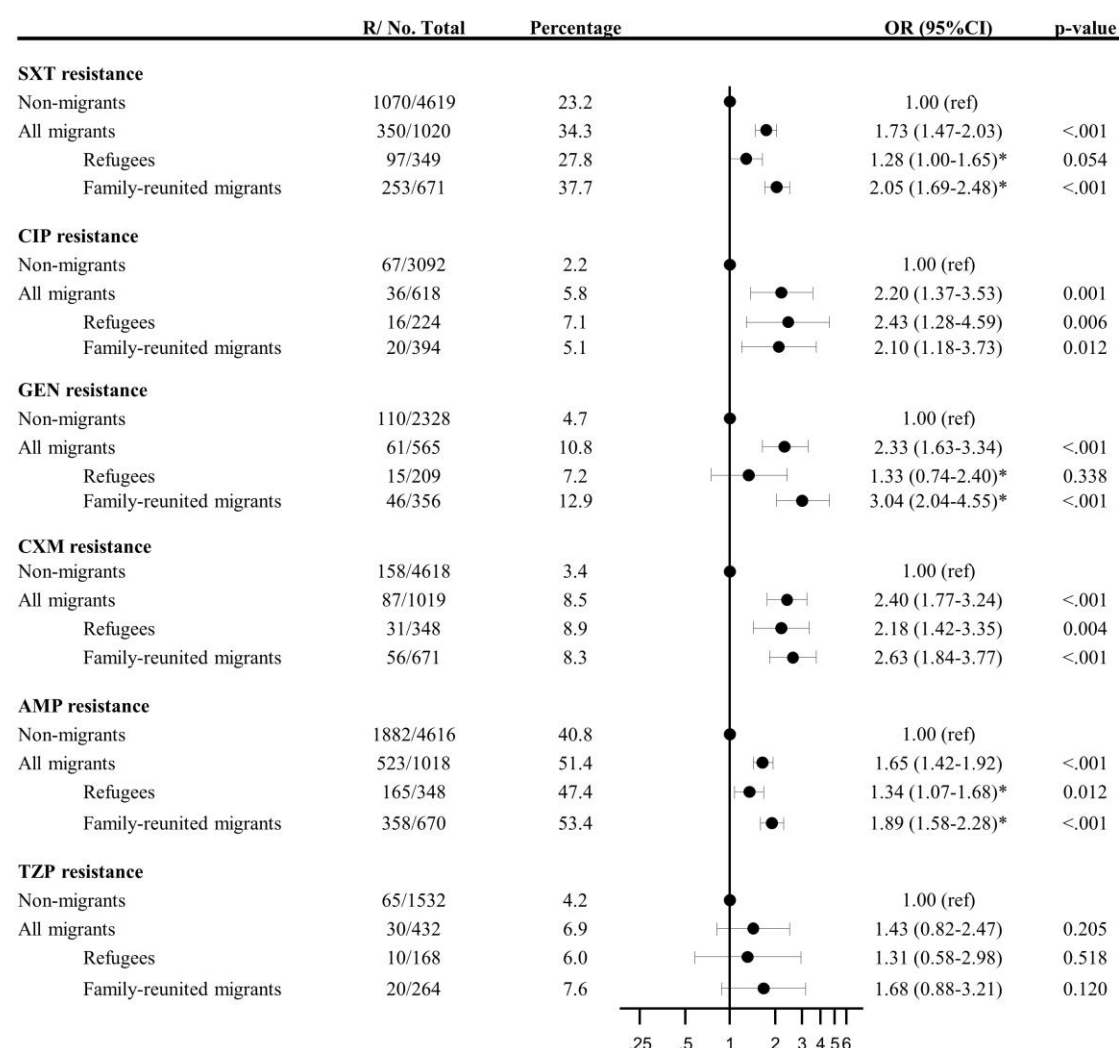


Figure 3. Antibiotic susceptibility among *E. coli* isolates in first urine samples from migrants and non-migrants grouped by region of origin.

Non-migrant individuals as the reference group with odds ratio 1.

Odds ratio adjusted for test year, Charlson index, income, sex and age at test.

*; Significantly different from non-migrants.

