

The Phenotypic Continuum of *ATP1A3*-Related Disorders

Aikaterini Vezyroglou, MD, Rhoda Akilapa, BMBS, Katy Barwick, PhD, Saskia Koene, PhD, Catherine A. Brownstein, PhD, Muriel Holder-Espinasse, PhD, Andrew E. Fry, MBChB, DPhil, Andrea H. Németh, MBBS, DPhil, George K. Tofaris, PhD, FRCP, Eleanor Hay, MBBS, MSc, Imelda Hughes, MD, Sahar Mansour, MBBS, Santosh R. Mordekar, MD, Miranda Splitt, MBBS, MD, Peter D. Turnpenny, MB ChB, Demetria Demetriou, MRCPCH, Tamara T. Koopmann, PhD, Claudia A.L. Ruivenkamp, PhD, Pankaj B. Agrawal, MD, MMSC, Lucinda Carr, MD, Virginia Clowes, PhD, Neeti Ghali, MBChB, MD, Susan Elizabeth Holder, FRCP, Jessica Radley, MSc, Alison Male, FRCP, Sanjay M. Sisodiya, MD, PhD, Manju A. Kurian, PhD,* J. Helen Cross, PhD,* and Meena Balasubramanian, PhD,*

Correspondence

Dr. Vezyroglou
k.vezyroglou@ucl.ac.uk

Neurology® 2022;99:e1511-e1526. doi:10.1212/WNL.000000000200927

Abstract

Background and Objectives

ATP1A3 is associated with a broad spectrum of predominantly neurologic disorders, which continues to expand beyond the initially defined phenotypes of alternating hemiplegia of childhood, rapid-onset dystonia parkinsonism, and cerebellar ataxia, areflexia, pes cavus, optic atrophy, sensorineural hearing loss syndrome. This phenotypic variability makes it challenging to assess the pathogenicity of an *ATP1A3* variant found in an undiagnosed patient. We describe the phenotypic features of individuals carrying a pathogenic/likely pathogenic *ATP1A3* variant and perform a literature review of all *ATP1A3* variants published thus far in association with human neurologic disease. Our aim is to demonstrate the heterogeneous clinical spectrum of the gene and look for phenotypic overlap between patients that will streamline the diagnostic process.

Methods

Undiagnosed individuals with *ATP1A3* variants were identified within the cohort of the Deciphering Developmental Disorders study with additional cases contributed by collaborators internationally. Detailed clinical data were collected with consent through a questionnaire completed by the referring clinicians. PubMed was searched for publications containing the term “*ATP1A3*” from 2004 to 2021.

Results

Twenty-four individuals with a previously undiagnosed neurologic phenotype were found to carry 21 *ATP1A3* variants. Eight variants have been previously published. Patients experienced on average 2–3 different types of paroxysmal events. Permanent neurologic features were common including microcephaly (7; 29%), ataxia (13; 54%), dystonia (10; 42%), and hypotonia (7; 29%). All patients had cognitive impairment. Neuropsychiatric diagnoses were reported in 16 (66.6%) individuals. Phenotypes were extremely varied, and most individuals did

*These authors contributed equally to this work as co-senior authors.

From the Developmental Neurosciences (A.V., K.B., M.A.K., J.H.C.), UCL Great Ormond Street Institute of Child Health, London, UK; Department of Neurology (A.V., L.C., M.A.K., J.H.C.), Great Ormond Street Hospital, London, UK; Department of Clinical Genetics (R.A., M.H.-E.), Guy's and St Thomas' NHS Foundation Trust, Guy's Hospital, London, United Kingdom; Department of Clinical Genetics (S.K., T.T.K., C.A.L.R.), Leiden University Medical Center, The Netherlands; Division of Genetics and Genomics (C.A.B., P.B.A.), the Manton Center for Orphan Disease Research, Boston Children's Hospital, MA; Department of Pediatrics (C.A.B., P.B.A.), Harvard Medical School, Boston, MA; All Wales Medical Genomics Service (A.E.F.), NHS Wales Cardiff and Vale University Health Board, Institute of Medical Genetics, University Hospital of Wales, UK; Division of Cancer and Genetics (A.E.F.), School of Medicine, Cardiff University, UK; Nuffield Department of Clinical Neurosciences (A.H.N., G.K.T.), University of Oxford, UK; Department of Clinical Genetics (E.H., A.M.), Great Ormond Street Hospital, London, UK; Department of Paediatric Neurology (I.H.), Central Manchester University Hospitals NHS Foundation Trust, UK; SW Thames Regional Genetics Service (S.M.), St George's University Hospitals NHS Foundation Trust, UK; Department of Paediatric Neurology (S.R.M.), Ryegate Children's Centre, Sheffield Children's Hospital, United Kingdom; Institute of Genetic Medicine (M.S.), Newcastle Upon Tyne, UK; Clinical Genetics (P.D.T.), Royal Devon & Exeter NHS Foundation Trust, UK; Aneurin Bevan University Health Board (D.D.), Royal Gwent Hospital, Newport, UK; Division of Newborn Medicine (P.B.A.), Boston Children's Hospital, MA; North West Thames Regional Genetics Service (V.C., N.G., S.E.H., J.R.), Northwick Park Hospital, Middlesex, UK; Department of Clinical and Experimental Epilepsy (S.M.S.), UCL Queen Square Institute of Neurology, London, UK; Department of Oncology & Metabolism (M.B.), University of Sheffield, UK; and Sheffield Clinical Genetics Service (M.B.), Sheffield Children's NHS Foundation Trust, UK.

Go to [Neurology.org/N](https://www.neurology.org/N) for full disclosures. Funding information and disclosures deemed relevant by the authors, if any, are provided at the end of the article.

The Article Processing Charge was funded by the authors.

This is an open access article distributed under the terms of the Creative Commons Attribution License 4.0 (CC BY), which permits unrestricted use, distribution, and reproduction in any medium, provided the original work is properly cited.

GLOSSARY

ADHD = attention-deficit and hyperactivity disorder; **AHC** = alternating hemiplegia of childhood; **ASD** = autism spectrum disorder; **CADD** = Combined Annotation-Dependent Depletion; **CAPOS** = cerebellar ataxia, areflexia, pes cavus, optic atrophy, sensorineural deafness; **COS** = childhood onset schizophrenia; **DDD** = Deciphering Developmental Disorders; **EIEE** = early infancy epileptic encephalopathy; **FIPWE** = fever-induced paroxysmal weakness and encephalopathy; **IP** = intermediate phenotype; **NKA** = sodium-potassium-ATPase; **PMG** = polymicrogyria; **RDP** = rapid-onset dystonia parkinsonism; **RECA** = relapsing encephalopathy with cerebellar ataxia; **SE** = status epilepticus; **SIFT** = sorting tolerant from intolerant; **VUS** = variants of uncertain significance; **WES** = whole-exome sequencing.

not fit clinical criteria for previously published phenotypes. On review of the literature, 1,108 individuals have been reported carrying 168 different *ATPIA3* variants. The most common variants are associated with well-defined phenotypes, while more rare variants often result in very rare symptom correlations, such as are seen in our study. Combined Annotation-Dependent Depletion (CADD) scores of pathogenic and likely pathogenic variants were significantly higher and variants clustered within 6 regions of constraint.

Discussion

Our study shows that looking for a combination of paroxysmal events, hyperkinesia, neuropsychiatric symptoms, and cognitive impairment and evaluating the CADD score and variant location can help identify an *ATPIA3*-related condition, rather than applying diagnostic criteria alone.

Throughout the past 20 years, pathogenic variants in *ATPIA3* have been discovered to cause an ever-expanding range of rare neurologic phenotypes, affecting both children and adults. *ATPIA3* encodes the $\alpha 3$ subunit of a sodium-potassium-ATPase (NKA) present in excitable (neuronal and cardiac) cells. The $\alpha 3$ -subunit has a relatively low Na⁺ affinity coupled with a high affinity to adenosine triphosphate (ATP).^{1,2} Consequently, the NKA carrying the $\alpha 3$ -subunit is ideally configured to clear high intraneuronal sodium concentrations occurring after intense neuronal firing, by being able to use the low concentration of ATP that will occur near the neuronal membrane shortly after an energy-demanding task.

In 2004, variants in *ATPIA3* were linked to rapid-onset dystonia parkinsonism (RDP).³ In 2012 such variants were discovered to also be a cause of alternating hemiplegia of childhood (AHC).⁴ In 2014, the gene was linked to cerebellar ataxia, areflexia, pes cavus, optic atrophy, sensorineural deafness (CAPOS) syndrome.^{5,6} Since then, many more phenotypes, including early infancy epileptic encephalopathy (EIEE)⁷ sometimes accompanied by polymicrogyria (PMG),⁸⁻¹⁰ relapsing encephalopathy with cerebellar ataxia (RECA)^{11,12}/fever-induced paroxysmal weakness and encephalopathy (FIPWE),¹³ childhood onset schizophrenia (COS),¹⁴ and D-DEMØ, a phenotype characterized by dystonia, facial dysmorphism encephalopathy, severe developmental delay, MRI abnormalities (including cerebellar hypoplasia), and lacking the AHC hallmark symptom of paroxysmal hemiplegia,¹⁵ were also attributed to *ATPIA3* variants. Table 1 summarizes phenotypes currently associated with *ATPIA3* variants. In a recent editorial, Salles et al.¹⁶ questioned the utility of describing evermore distinct phenotypes associated

with *ATPIA3* mostly because some individuals do not fit any of the currently proposed phenotypes.

In this study, we aim to describe the phenotypic features of a cohort of previously undiagnosed individuals with developmental delay and a neurologic presentation, carrying a pathogenic/likely pathogenic *ATPIA3* variant, and examine where they fit within the current spectrum of *ATPIA3*-related disorders. We also perform a literature review of all *ATPIA3* variants published thus far in association with human neurologic disease. Our work clearly demonstrates the heterogeneous clinical spectrum associated with *ATPIA3* variants, as well as phenotypic overlap between patients, that will streamline the diagnostic process.

Methods

Subject Cohort

An application was made to the Deciphering Developmental Disorders (DDD) study¹⁷ for a Complementary Analysis Project, allowing access to anonymized details of individuals with *ATPIA3* variants identified through this study.¹⁸ If variant analysis and phenotypic details made pathogenicity likely, responsible clinicians were contacted to invite patients and their families to study recruitment. Some of the contacted clinicians had further individuals with *ATPIA3* variants in their care, which they put forward as potential participants. Genomic diagnosis was reached through trio whole-exome sequencing (WES) for the DDD participants and through either WES or diagnostic gene panels for the other study participants. Phenotypic details were collected using a standardized clinical proforma covering all symptoms

Table 1 *ATP1A3*-Associated Phenotypes

Phenotype	Rapid-onset dystonia parkinsonism (RDP)	Alternating hemiplegia of childhood (AHC)	Cerebellar ataxia, areflexia, pes cavus, optic atrophy, sensorineural hearing loss syndrome (CAPOS)	Relapsing encephalopathy with cerebellar ataxia (RECA)/ fever-induced paroxysmal weakness and encephalopathy (FIPWE)	Early infantile epileptic encephalopathy (EIEE) +/- polymicrogyria (PMG)	Symptom onset on day 1 of life, dystonia, dysmorphism of the face, encephalopathy (global delay), MRI abnormalities (cerebellar hypoplasia), absence of hemiplegia (D-DEMØ)	Childhood onset schizophrenia (COS)
No. of patients published 2004–2021	140	817	53	45	31	4	2
Commonly associated <i>ATP1A3</i> variants (>15 cases published)	p.Thr613Met p.Ile758Ser	p.Asp801Asn p.Glu815Lys p.Gly947Arg	p.Glu818Lys	p.Arg756His p.Arg756Cys			
Diagnostic criteria/ supportive clinical features	<p>Diagnostic criteria⁴⁴:</p> <ul style="list-style-type: none"> Dystonia Absence of motor symptoms < age 18 mo <p><i>ATP1A3</i> mutation</p> <p>Supportive features:</p> <ul style="list-style-type: none"> Rapid onset of dystonia with features of parkinsonism over a few minutes to 30 d Bulbar findings on examination Executive dysfunction 	<p>Diagnostic criteria⁴³:</p> <p>Essential criteria:</p> <ul style="list-style-type: none"> Paroxysmal episodes of hemiplegia that alternate between sides and/or quadriplegia Abnormal neurologic development <p>Major criteria:</p> <ul style="list-style-type: none"> Onset < age 18 mo Dystonic episodes Different types of episodes occurring independently or together at the same time with evolution from 1 or more symptoms to others during that 1 episode Paroxysmal abnormal eye movements, such as nystagmus and especially monocular nystagmus <i>ATP1A3</i> mutation Plegia spells improve with sleep <p>Minor criteria:</p> <ul style="list-style-type: none"> Epileptic seizures Episodes of altered consciousness Abnormal motor function (hypotonia or dystonia that can coexist, ataxia, choreoathetosis, oral motor control) Episodic autonomic dysfunction <p>2 essential criteria +3 major criteria OR 2 essential criteria +2 major and 3 minor criteria needed for diagnosis</p>	<p>Clinical features⁶:</p> <ul style="list-style-type: none"> Onset 6 mo–4y Episodes of ataxic encephalopathy and/or weakness during or after a febrile illness Usually 1–3 separate episodes with residual symptoms that can slowly progress over time Residual symptoms: <ul style="list-style-type: none"> Cerebellar ataxia Areflexia Pes cavus (few patients described) Optic atrophy Sensorineural hearing loss 	<p>Clinical features¹²:</p> <ul style="list-style-type: none"> Onset 8 mo to 10 y Episodes of ataxic encephalopathy and/or weakness during or after a febrile illness Patients experience 2 episodes on average Slow recovery and residual symptoms No progression in adulthood Residual symptoms: <ul style="list-style-type: none"> Cerebellar ataxia Dysarthria Hypotonia Dystonia Choreiform movements Cognitive delay Oculomotor symptoms 	<p>Clinical features:</p> <ul style="list-style-type: none"> Severe developmental delay Epilepsy onset in infancy Polymicrogyria present in some patients 	<p>Clinical features¹⁵:</p> <ul style="list-style-type: none"> Onset day 1 of life Dystonia Dysmorphism of the face Global developmental delay Cerebellar hypoplasia No hemiplegic episodes 	<p>Diagnostic criteria (DSM IV-TR):</p> <ul style="list-style-type: none"> 2 or more of the following: delusions, hallucinations, disorganized speech, grossly disorganized, or catatonic behavior, negative symptoms (flattening, alogia, avolition) Social dysfunction Persistence of symptoms for at least 6 mo Exclusion of schizoaffective and mood disorder Exclusion of substance abuse or general medical condition If an autistic disorder or other pervasive developmental disorder is present, the additional diagnosis of COS can only be made if prominent delusions or hallucinations are also present for at least 1 mo Age at onset <13 y

previously reported in *ATPIA3*-related disorders and MRI features.

We used the UpSetR package in R to visualize intersections of signs and symptoms, trying to identify common phenotypes among individuals. As the clinical proforma included a long list of symptoms and signs due to the phenotypic variability of *ATPIA3*-related conditions, we decided to also group symptoms into broader categories where possible. We formed 4 categories:

1. Paroxysmal events, including hemiplegic events, dystonic episodes, seizures, abnormal eye movements, apnoea, and autonomic episodes.
2. Persistent movement disorders, including hyperkinetic phenotypes (dystonia and chorea) and ataxia.
3. Cognitive impairment (mild, moderate, and severe).
4. Neuropsychiatric symptoms, including behavioral difficulties, attention-deficit and hyperactivity disorder (ADHD), autism spectrum disorder (ASD), and COS.

To evaluate the pathogenicity of missense variants, *in silico* prediction tools were used, including sorting tolerant from intolerant (SIFT),¹⁹ polymorphism phenotyping v2, PROVEAN,²⁰ MutationTaster,²¹ and CADD scores.²² The presence of variants in the healthy population (141,456 individual exomes/genomes in the Genome Aggregation Database v2.1.1 [gnomAD²³]) was determined and conservation across 14 species evaluated, as well as variant segregation within each family. A literature search was performed to determine whether variants were recurrent or previously reported. American College of Medical Genetics and Genomics (ACMG) classification criteria²⁴ were used to assess pathogenicity. Individuals with class 4 or 5 variants (likely pathogenic or pathogenic variants based on ACMG variant classification, respectively) were included in this study. Informed consent was obtained from all patients and/or their guardians.

Literature Review

A PubMed search was performed for all papers that included the term “*ATPIA3*” from January 2004, the year of the first association of an *ATPIA3* variant with human disease (RDP), to August 2021. Included in this study are all publications in English and 1 in Spanish language (where phenotypic and genomic information was included in the English abstract) reporting individuals carrying a heterozygous *ATPIA3* variant considered to be pathogenic. One publication in Japanese, 1 in Russian, and 3 in Chinese were not included. Only publications with sufficient details about the variant (nucleotide change and/or amino acid change and gene transcript) and patient phenotype were included. All individuals published were counted, unless clearly stated that they had already been published elsewhere, in which case they were only counted once. However, it is possible that cohorts overlap. Although *ATPIA3* variants have been reported in different gene transcripts, in this article, all variant nomenclatures adhere to transcript

NM_152296 (isoform 1). Variants that were inconsistent with all available transcripts were presumed to have been reported incorrectly and excluded.

We calculated Combined Annotation-Dependent Depletion (CADD) scores²² for all missense *ATPIA3* variants collected from the literature and for all missense variants reported within ClinVar as likely benign and benign and compared them. Unlike other genomic annotations that tend to exploit a single information type (i.e., conservation), CADD is a framework that objectively integrates many diverse annotations into a single, quantitative score. The integrated annotations include conservation metrics, functional genomic data, transcript information, and protein-level scores (Grantham, SIFT, and PolyPhen). CADD calculates a raw score and a “PHRED-scaled” score. PHRED-scaled scores are normalized to all potential ~9 billion SNVs, thus providing a comparable unit for analysis. Hence, a PHRED-scaled score of ≥ 10 indicates a raw score in the top 10% of all possible reference genome SNVs, a score of ≥ 20 or greater indicates a raw score in the top 1%, etc.²⁵ The developers of CADD do not suggest a rigid cutoff to suggest pathogenicity; however, looking at various HGMD molecular categories of 174,183 disease-associated deleterious mutations, one study found mean CADD scores for pathogenic missense variants to be above 20.²⁶ The tool is freely available on cadd.gs.washington.edu.

Constraint Analysis

Constraint analysis²⁷ was performed on all missense pathogenic variants in the study cohort and for published cases and compared with the reported benign missense variants in the population database GnomAD. The number of benign missense variants present within every 10 amino acid residues was plotted across the length of the gene, and from this, the missense constraint heat map included in Figure 4 was generated using the following parameters: dark green = >20 variants, light green = 11–20 variants, yellow = 8–10 variants, light red = 1–3 variants, and dark red = 0 variants. Locations of pathogenic missense variants identified in the study cohort were also plotted across the length of the gene, visually highlighting regions of the gene that are tolerant and intolerant to missense variation.

Data Availability

All data relevant to our patient cohort are published within the text and tables of this article. The detailed data extracted from the literature to conduct the literature review may be shared at the request of any qualified investigator for purposes of replicating procedures and results.

Standard Protocol Approvals, Registrations, and Patient Consents

The DDD study has UK Research Ethics Committee approval (10/H0305/83, granted by the Cambridge South REC, and GEN/284/12, granted by the Republic of Ireland REC). The “Natural history in *ATPIA3*-related disease: a deep phenotyping-genotyping project” has also been

granted UK Research Ethics Committee approval (18/LO/1169), including for collecting anonymized genotypic and phenotypic data from international collaborators. Informed consent for publication of clinical and molecular data was obtained from all patients included in this manuscript and/or their guardians.

Results

Subject Cohort

Twenty-seven individuals with *ATPIA3* variants in the DDD cohort (nearly 14,000 children recruited with their parents) were identified. In 7 individuals, the *ATPIA3* variant was classified as class 2 (likely benign) due to either an incongruent phenotype or high prevalence in healthy populations. For the remaining 20 individuals, 2 clinicians did not report back, 2 clinicians declined participation in the study, and 3 individuals did not consent to study participation. As a result, 13 individuals from the DDD cohort were included in this study. Another 11 individuals with class 4 and 5 (likely pathogenic/pathogenic) *ATPIA3* variants were volunteered by collaborating clinicians and included because they fulfilled the study criteria. Three were family members of 2 separate patients with DDD. Three individuals have been previously published in the literature (patients 3, 5, and 14). Table 2 summarizes the *ATPIA3* variants present in our cohort, including 13 novel variants.

Patient Age and Disease Onset

The median age of our cohort was 32.8 years (interquartile range [IQR] 15.5 years, range 3–52 years). Sixteen individuals (66.6%) were female. Age at onset of symptoms ranged from birth to 21 years with a median age at onset at 6 months (IQR = 9.94 months). The initial concern in order of frequency was developmental delay (n = 8, 33.3%), epileptic seizures (n = 6, 25%), dystonic events (n = 3, 12.5%), abnormal eye movements (n = 3, 12.5%), in 1 case accompanied by laryngomalacia and distal arthrogryposis all occurring at birth, ASD (n = 2, 8.33%), hemiplegic events (n = 1, 4.17%), and torticollis (n = 1, 4.17%). In 1 patient, the disease started after an encephalopathic episode, in 2 after febrile episodes.

Paroxysmal Events

All individuals except for 2 (siblings 19a and 19b) had at least 1 type of paroxysmal event in their clinical history. On average, individuals had 2–3 different types of paroxysmal events. The most common were dystonic events (n = 14), followed by abnormal eye movements (n = 12) and epileptic seizures (n = 12). Hemiplegic episodes were less common in this cohort (n = 9). Autonomic episodes, such as tachycardia, mydriasis, and vomiting, were reported in 9 and apnoeic events in 4 patients.

Epilepsy

Recurrent epileptic seizures were reported in 12 individuals. In 6 (50%), this was supported by epileptiform features on

EEG. Seizure types were reported as focal seizures (n = 6), generalized tonic-clonic seizures (n = 5), and absence seizures, this is a seizure type seizures (n = 3). Four individuals had 2 seizure types, and 7 individuals had a history of status epilepticus (SE).

Neurologic Features

Most individuals had complex neurologic phenotypes with 1–7 key neurologic features (median: 2.5; min: 0; max: 7; IQR: 2). Ataxia was the most frequently reported feature (n = 13), followed by dystonia (n = 10), spasticity (n = 8), microcephaly (n = 7), decreased muscle tone/hypotonia (n = 7), pyramidal signs (n = 5), dysarthria (n = 5), dysphagia (n = 4), chorea (n = 3), fluctuating muscle tone (n = 3), and increased muscle tone (n = 2). No individual had areflexia. Eight individuals reported worsening of their neurologic symptoms over time. Two individuals had no significant neurologic comorbidity.

Neuroimaging

MRI was available in 18 individuals and abnormal findings reported in 11. These were most commonly cerebellar atrophy (n = 7, 38.9%), followed by hippocampal sclerosis (n = 3, 16.7%), cerebral atrophy (n = 2, 11.1%), thin corpus callosum (n = 2, 11.1%), and delayed myelination (n = 1, 5.6%). In 1 individual with MRI scans available at age 4 years and 11 years, the cerebellar atrophy progressed with age.

Development

Cognitive impairment was reported in all individuals, but severity was extremely varied. Motor delay was reported in 20 (83.3%) individuals, with walking age ranging from normal at 13 months to some individuals not having learnt to walk by 18 years. Language delay was also reported in 20 (83.3%) individuals. Communication skills were very varied, ranging from starting to communicate at 9 months to not having acquired language at age 20 years. Grade of cognitive impairment was reported in 17 individuals and classified as mild in 5 individuals (29.4%), moderate in 5 individuals (29.4%), and severe in 7 individuals (41.2%). In 5 individuals (21%), regression of skills was reported, occurring either steadily over time (n = 3) or in association with a clear trigger (fever, infection, SE) (n = 2).

Neuropsychiatry

Sixteen (66.7%) individuals had at least 1 neuropsychiatric diagnosis. 13 (54%) had behavioral difficulties, 7 (29%) had a diagnosis of ASD, 5 (21%) a diagnosis of ADHD, and 1 individual a diagnosis of COS.

Symptom Combinations

Looking at the combination of symptoms in our 24 patients, phenotypes were extremely varied. Across all 22 neurologic signs and symptoms we collated, no 2 individuals shared the same combination (Figure 1A). Looking only at the 11 more common signs and symptoms, again there was little overlap, with only 2 pairs of individuals sharing the same

Table 2 ATP1A3 Variants Present in Our Cohort

Case nr	1	2	3	4	5	6	7	8	9	10	11	12
Inheritance	De novo	De novo	De novo	De novo	De novo	De novo	De novo	De novo	De novo	De novo	Unknown	De novo
Chr19(GRCh37)	g.42492179C>G	g.42492179C>A	g.42490354C>T	g.42489219T>A	g.42489116C>A	g.42489105C>T	g.42489099C>T	g.42489096G>A	g.42489071G>A	g.42486215C>A	g.42486179C>T	g.42486176G>T
cDNA change	c.266 G>C	c.266 G>T	c.385G>A	c.844A>T	c.947G>T	c.958 G>A	c.964 G>A	c.967C>T	c.992C>T	c.1037G>T	c.1073G>A	c.1076C>A
Protein change	p.(Gly89Ala)	p.(Gly89Val)	p.(Val129Met)	p.(Ile282Phe)	p.(Gly316Val)	p.(Ala320Thr)	p.(Val322Ile)	p.(Pro323Ser)	p.(Thr331Ile)	p.(Cys346Phe)	p.(Gly358Asp)	p.(Ser359Tyr)
SIFT	Deleterious (score 0)	Deleterious (score 0)	Deleterious (score 0)	Deleterious (score 0)	Deleterious (score 0)	Deleterious (score 0)	Deleterious (score 0)	Deleterious (score 0)	Deleterious (score 0)	Deleterious (score 0)	Deleterious (score 0)	Deleterious (score 0)
MutationTaster	Disease causing (prob: 1)	Disease causing (prob: 1)	Disease causing (prob: 1)	Disease causing (prob: 1)	Disease causing (prob: 1)	Disease causing (prob: 1)	Disease causing (prob: 1)	Disease causing (prob: 1)	Disease causing (prob: 1)	Disease causing (prob: 1)	Disease causing (prob: 1)	Disease causing (prob: 1)
Polyphen 2 HumDiv	Probably damaging (score 0.999)	Probably damaging (score 1)	Probably damaging (score 0.999)	Probably damaging (score 1)	Probably damaging (score 1)	Probably damaging (score 1)	Probably damaging (score 0.999)	Probably damaging (score 1)	Probably damaging (score 1)	Probably damaging (score 1)	Probably damaging (score 1)	Probably damaging (score 0.998)
PROVEAN	-4.489 (deleterious)	-6.732 (deleterious)	-2.374 (neutral)	-3.392 (deleterious)	-6.873 (deleterious)	-3.427 (deleterious)	-0.848 (neutral)	-6.947 (deleterious)	-5.042 (deleterious)	-9.292 (deleterious)	-5.913 (deleterious)	-5.069 (deleterious)
CADD	23.2	23.7	25.3	26.5	26.2	26.6	25.3	25.4	27.2	27.5	25.7	25.7
Conservation (14 species)	Complete	Complete	Complete	Complete	Complete	Complete	Complete	Complete	Complete	Complete	Complete	Complete
Novel variant	Yes	Yes	No ¹²	Yes	No ⁸	No ²⁸	Yes	No ²⁶	Yes	Yes	No ²⁹	Yes
Case nr	13	14	15	16	17	18	19a	19b	20	21a	21b	21c
Inheritance	De novo	De novo	De novo	De novo	De novo	Paternal (mosaic father)	Maternal (mosaic mother)	Maternal (mosaic mother)	Unknown	Maternally inherited	Unknown	Maternally inherited
Chr19(GRCh37)	g.42482377G>A	g.42480621C>T	g.42479928C>T	g.42479882C>T	g.42479831A>C	g.42479793C>T	g.42474565A>T	g.42474565A>T	g.42471896C>T	g.42471896C>A	g.42471896C>A	g.42471896C>A
cDNA change	c.1732C>T	c.2041G>A	c.2116 G>A	c.2162 G>A	c.2213T>G	c.2251G>A	c.2393T>A	c.2393T>A	c.2839G>A	c.2839 G>T	c.2839 G>T	c.2839 G>T
Protein change	p.(Leu578Phe)	p.(Ala681Thr)	p.(Gly706Arg)	p.(Gly721Glu)	p.(Met738Arg)	p.(Gly751Arg)	p.(Leu798His)	p.(Leu798His)	p.(Gly947Arg)	p.(Gly947Trp)	p.(Gly947Trp)	p.(Gly947Trp)
SIFT	Deleterious (score 0)	Deleterious (score 0)	Deleterious (score 0)	Deleterious (score 0)	Deleterious (score 0)	Deleterious (score 0)	Deleterious (score 0)	Deleterious (score 0)	Deleterious (score 0)	Deleterious (score 0)	Deleterious (score 0)	Deleterious (score 0)
MutationTaster	Disease causing (prob: 1)	Disease causing (prob: 1)	Disease causing (prob: 1)	Disease causing (prob: 1)	Disease causing (prob: 1)	Disease causing (prob: 1)	Disease causing (prob: 1)	Disease causing (prob: 1)	Disease causing (prob: 1)	Disease causing (prob: 1)	Disease causing (prob: 1)	Disease causing (prob: 1)
Polyphen 2 HumDiv	Benign (score 0.386)	Probably damaging (score 1)	Probably damaging (score 1)	Probably damaging (score 1)	Probably damaging (score 0.976)	Benign (score 0.203)	Probably damaging (score 1)	Probably damaging (score 1)	Probably damaging (score 1)	Probably damaging (score 1)	Probably damaging (score 1)	Probably damaging (score 1)

Continued

Table 2 ATP1A3 Variants Present in Our Cohort (continued)

Case nr	13	14	15	16	17	18	19a	19b	20	21a	21b	21c
PROVEAN	-3.267 (deleterious)	-3.035 (deleterious)	-6.208 (deleterious)	-5.999 (deleterious)	-4.490 (deleterious)	-5.827 (deleterious)	-5.180 (deleterious)	-5.180 (deleterious)	-4.310 (deleterious)	-4.673 (deleterious)	-4.673 (deleterious)	-4.673 (deleterious)
CADD	26.7	25.9	25.1	27.3	24.2	25	26.6	26.6	27.7	28.9	28.9	28.9
Conservation (14 species)	Complete	Complete	Complete	Complete	Complete	Complete	Moderate	Moderate	Moderate	Moderate	Moderate	Moderate
Novel variant	Yes	NO ²⁵	NO ³⁰⁻³²	Yes	Yes	Yes	Yes	Yes	NO ⁴	Yes	Yes	Yes

Abbreviations: CADD = Combined Annotation-Dependent Depletion; SIFT = sorting tolerant from intolerant. All variants are missense and absent from the population database gnomAD version 2.1.1.

features (Figure 1B). However, looking at the broader symptom categories, paroxysmal events, movement disorders, cognitive impairment, and neuropsychiatric symptoms, almost half of the cohort (45.8%, n = 11) had at least 1 symptom from each of all 4 categories, while most individuals (91.6%, n = 22) had at least 1 symptom from 3 categories (Figure 1C).

Genotype-Phenotype Correlation in Individuals Sharing the Same ATP1A3 Variant

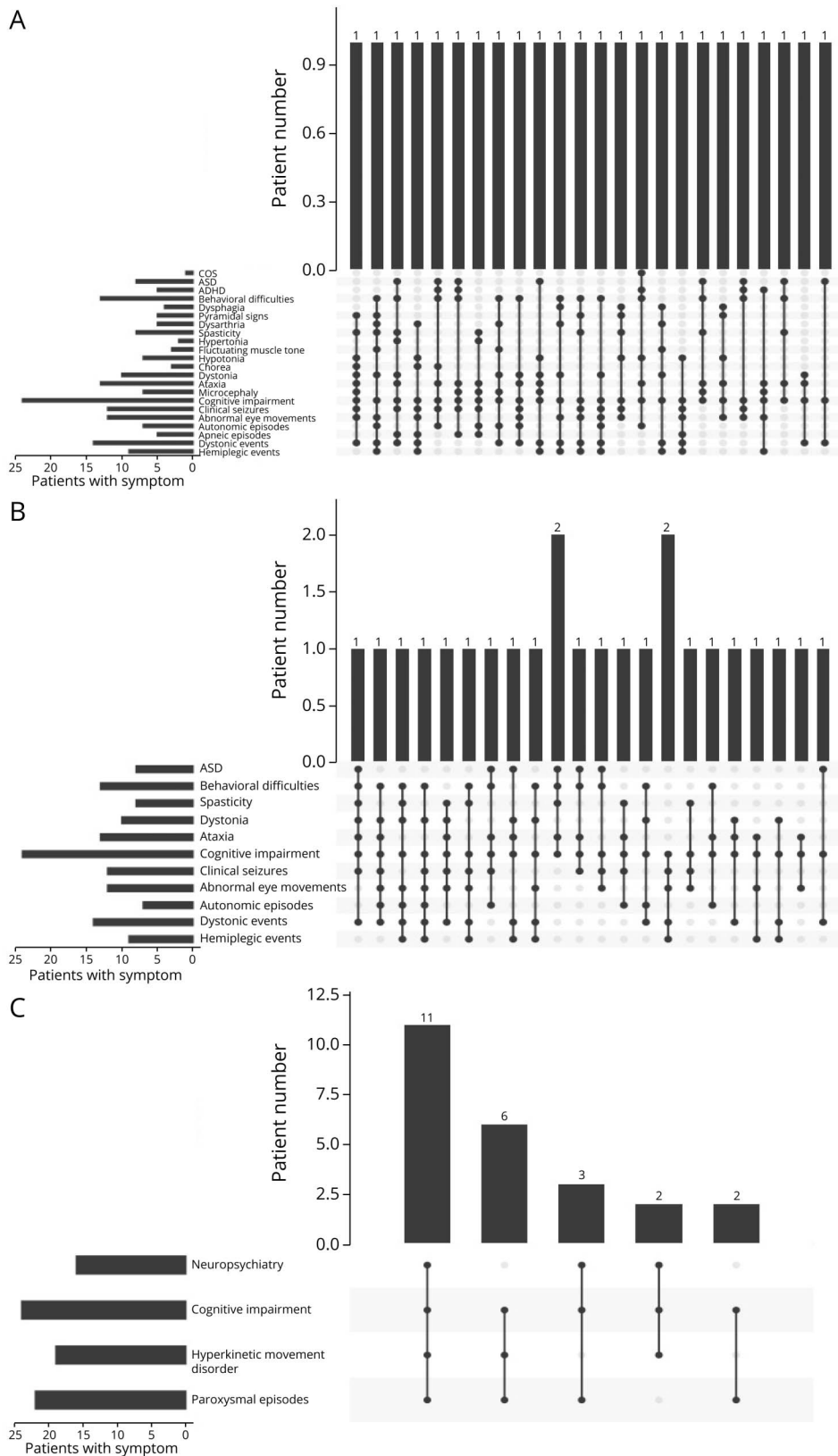
Thirteen of the 21 variants reported in our cohort have not previously been published in the literature. In 3 individuals, the variants previously published refer to the same patients as in our cohort.^{9,14,28} The remaining previously published 5 variants (in different patients) are c.958G>A (p.Ala320Thr),²⁹ c.967C>T (p.Pro323Ser),³⁰ c.1073G>A (p.Gly358Asp),³¹ c.2116G>A (p.Gly706Arg),³²⁻³⁴ and c.2839G>A/C (p.Gly947Arg). Table 3 summarizes the individuals' phenotypes.

In our cohort, there are 2 families. They harbor 2 novel variants c.2393T>A (p.Leu798His) and c.2839G>T (p.Gly947Trp). The boy and girl (patients 19a and 19b), sharing the c.2393T>A (p.Leu798His) variant, have both inherited the variant from their mosaic mother. They have similar phenotypes, presenting with severe cognitive impairment, ataxia, and spasticity. Patient 19b developed secondary microcephaly. In our second family, a pair of brothers (21a and 21c) have inherited variant c.2839G>T (p.Gly947Trp) from their symptomatic mother (patient 21b). Individuals 21a and 21b both had a late onset presentation with dystonic episodes presenting at 14 and 21 years, respectively. Both are described as having mild cognitive impairment. The mother's neurologic phenotype has further deteriorated, and she is now ataxic and has nonparoxysmal dystonia. The older brother (patient 21c) has a much more severe phenotype, presenting much earlier at 6 months with torticollis and going on to develop hemiplegic episodes, dystonic episodes, abnormal eye movements, and epilepsy. He has moderate cognitive impairment.

ATP1A3 Variant Review

The literature search yielded 349 publications. Of these, 134 reported individuals with heterozygous ATP1A3 variants and included genotypic and phenotypic details and were included in this review. After translating all variants into transcript NM_152296, 168 different ATP1A3 variants in total were found in the literature to date, corresponding to 1,108 reported patients. One hundred forty-four variants were missense variants, 15 small intragenic deletions (1 frameshift, 14 in frame), 2 small intragenic in frame deletion/insertions, 3 small intragenic in frame duplications, and 4 splice site variants. Reviewing the number of individuals published with each variant demonstrated that almost half the patients (42.8%) carry one of the 2 most common variants c.2401G>A (p.Asp801Asn) and c.2443G>A (p.Glu815Lys). Two-thirds (65.2%) of the cases (n = 721) carry one of 8 reported variants. These are

Figure 1 Symptom Combinations in Our Subject Cohort



(A) Phenotypes in our cohort are extremely variable, with none of the patients sharing a combination of neurologic signs and symptoms. (B) Looking only at the most common 11 signs and symptoms, only 2 pairs of patients have overlapping features. (C) If we group symptoms into 4 categories: (1) neuropsychiatric symptoms, (2) hyperkinetic movement disorders, (3) paroxysmal episodes, and (4) cognitive impairment almost half our cohort ($n = 11$) has a phenotype combining all 4 categories and almost all individuals (22/24 individuals) have a phenotype combining 3 of the 4 categories.

Table 3 Phenotype of Patients With Variants Previously Published in the Literature Compared With Phenotypes of Patients With the Same Variants in Our Cohort

<i>ATP1A3</i> variant	Phenotype of patient in our cohort	Phenotype of patients previously published		
p.Gly358Asp	Patient 11	Pereira et al. ³²		
	• Age: 3 y	• Age: 5 y		
	• Onset age 2 y	• Onset age 3 y		
	• Initial concern: hemiplegic episodes ^a	• Initial concern: rapid-onset left brachial-predominant dystonia		
	• Dystonia ^a	• Dysarthria		
	• Dysarthria ^a	• Dysphagia		
• Dysphagia ^a	• Action tremor			
• Mild developmental delay: walks independently and talks in 2-word sentences.	• Hemiplegic episodes			
	• Normal development			
p.Gly706Arg	Patient 15	Yang et al. ³³	Holze et al. ³⁵	Hully et al. ³⁴ (siblings)
	• Age: 27 y	• Onset age: 2 mo	• Onset age: 9 mo	• Onset age: 2 and 4.5 mo
	• Onset in infancy	• Initial concern: abnormal eye movements	• Initial concern: apnoeic events (? epileptic)	• Initial concern: epileptic seizures
	• Initial concern: developmental delay ^a	• Hemiplegic episodes	• Mild developmental delay	• Severe developmental and epileptic encephalopathy
	• Moderate cognitive impairment	• Quadriplegic episodes	• Lost to follow-up age 2 y	• Autistic features
	• Epilepsy ^a	• Dystonia		• Abnormal eye movements
	• Ataxia	• Developmental delay		• MRI: bilateral temporal sclerosis
	• Chorea			
	• Autistic features ^a			
	• MRI: bilateral temporal sclerosis ^a			
p.Ala320Thr	Patient 6	Trump et al. ³¹		
	• Age: 5 y	• Seizures		
	• Onset age day 1 of life	• Developmental delay		
	• Initial concern: distal arthrogryposis, laryngomalacia, abnormal eye movements.	• Alternating hemiplegia		
	• Severe developmental delay			
	• Epilepsy			
	• Apnoeic episodes			
	• Hemiplegic Episode (only occurred once at age 10 y)			
	• Dysarthria			
• Chorea				
p.Pro323Ser	Patient 8	Moya-Mendez et al. ²⁹		

Continued

Table 3 Phenotype of Patients With Variants Previously Published in the Literature Compared With Phenotypes of Patients With the Same Variants in Our Cohort (continued)

ATP1A3 variant	Phenotype of patient in our cohort	Phenotype of patients previously published
	<ul style="list-style-type: none"> • Age: 18 y • Onset age day 1 of life • Initial concern: epileptic seizures (resolved at 18 mo) • Severe developmental delay • Dystonia • Abnormal eye movements • Microcephaly • Dyskinesia • No hemiplegic episodes 	<ul style="list-style-type: none"> • 2 patients with a clinical diagnosis of AHC, no further phenotypic details given
p.Gly947Arg	Patient 20	
	<ul style="list-style-type: none"> • Age: 43 y • Onset age: 6–12 mo • Initial concern: moderate developmental delay • Hemiplegic episodes • Quadriplegic episodes • Abnormal eye movements • Autonomic episodes • Dystonia • Dysarthria • Spasticity with pyramidal signs 	<ul style="list-style-type: none"> • One of the 3 most common variants associated with a relatively mild phenotype of AHC (n = 77 patients published)

Abbreviation: AHC = Alternating Hemiplegia of Childhood.

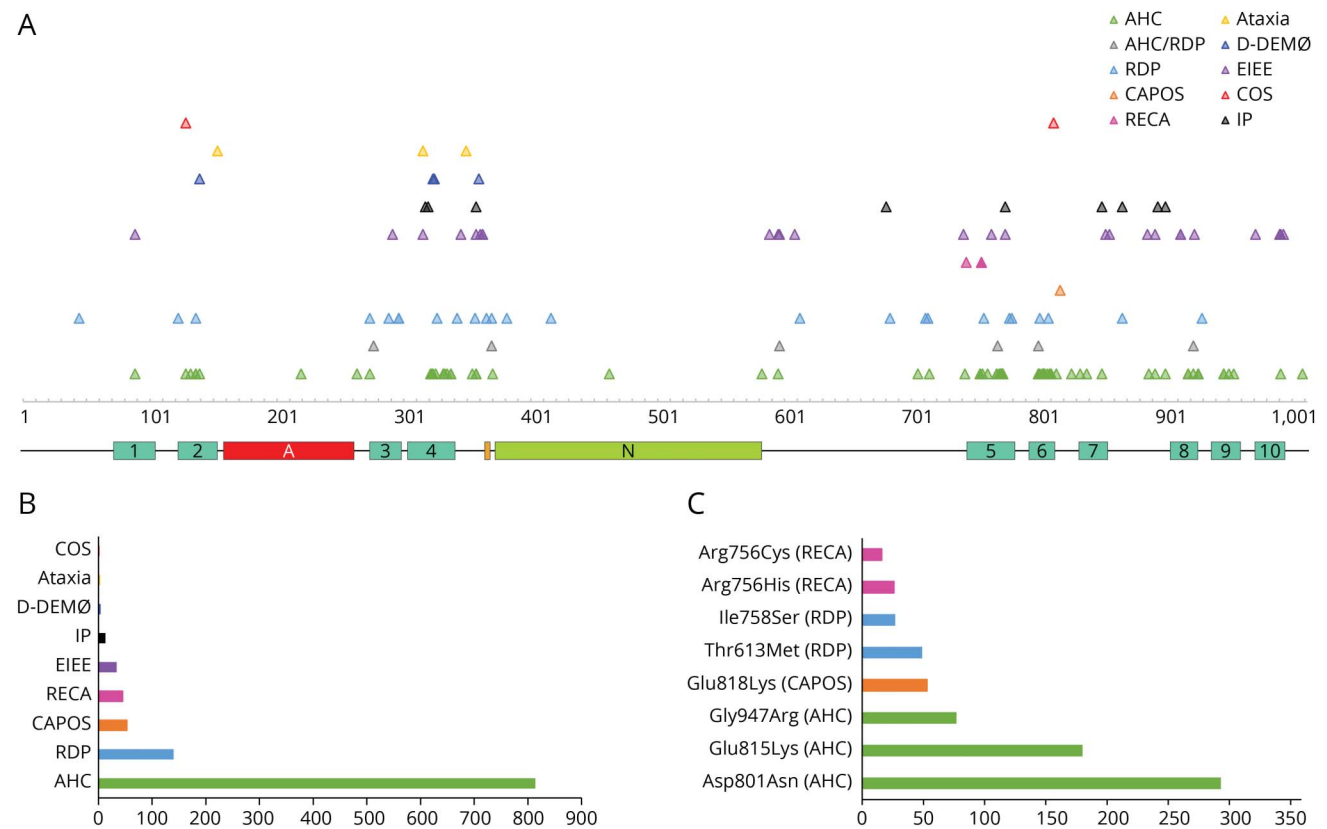
Published phenotypic descriptions were limited for variants p.Ala320Thr and p.Pro323Ser. Our patient with variant p.Gly947Arg has an AHC phenotype, as expected.

^a Previously described symptoms for variants p.Gly358Asp and p.Gly706Arg.

c.2401G>A (p.Asp801Asn) (n = 293), c.2443G>A (p.Glu815Lys) (n = 180), and c.2839G>A/C (p.Gly947Arg) (n = 77), the 3 most common variants associated with AHC, and followed by c.2452G>A (p.Glu818Lys) (n = 53), the single-variant associated with CAPOS. Next in frequency are variants c.1838C>T (p.Thr613Met) (n = 49) and c.2273T>G (p.Ile758Ser) (n = 27), the most common genotypes associated with RDP, and finally, c.2267G>A (p.Arg756His) (n = 26) and c.2267G>T (p.Arg756Cys) (n = 16), the variants at the 756th amino acid (AA) residue causing RECA/FIPWE (Figure 2). The remaining 160 variants only account for 34.8% of the published individuals. For 84 variants, only 1 individual has been reported to date.

We attempted to assign phenotypes to all published cases. Mostly, this was already provided by the authors but when not, we used the information available in the manuscript to determine phenotype. If we were unable to assign 1 phenotype (e.g., if the patient had features of several *ATP1A3*-associated phenotypes), we used the term intermediate phenotype (IP). Although this approach is limited by the quality of published data, it nevertheless provided an overview of the most common *ATP1A3* phenotypes and associated genotypes. AHC was by far the most commonly reported phenotype, with 817 reported patients. A further 140 patients with RDP, 53 with CAPOS, 45 with RECA/FIPWE, 31 with EIEE, 13 with IP, 4 with D-DEMØ, 3 with isolated ataxia, and

Figure 2 *ATP1A3* Variants



(A) Distribution of variants across the $\alpha 3$ subunit of the sodium/potassium transporting ATPase. Location of protein domains is shown across the protein: turquoise, 1–10 transmembrane domains; red, actuator domain; orange, phosphorylation site; green, nucleotide binding site. Variants are color-coded per phenotype. (B) Frequency of phenotypes among the 1,000 + reviewed patients reported in the literature from 2004 to 2021. (C) Eight most frequent variants responsible for *ATP1A3*-related disorders in the 1,000 + reviewed patients reported in the literature from 2004 to 2021. Each variant leads to a specific phenotype. AHC = alternating hemiplegia of childhood; CAPOS = cerebellar ataxia, areflexia, pes cavus, optic atrophy, sensorineural hearing loss syndrome; COS = childhood onset schizophrenia; D-DEMØ = dystonia, dysmorphism of the face, encephalopathy with developmental delay, brain MRI abnormalities always including cerebellar hypoplasia, no hemiplegia (Ø), and neonatal onset of symptoms; EIEE = early infant epileptic encephalopathy; IP = intermediate phenotype; RDP = rapid-onset dystonia parkinsonism; RECA = relapsing encephalopathy with cerebellar ataxia.

2 with COS have also been reported (Figure 2). Variants were generally phenotype-specific, except for 6 variants (c.2305A>C [Thr769Pro], c.2767G>A [Asp923Asn], c.1109C>A [Thr370Asn], c.1790G>C [Arg597Pro], c.829G>A [Glu277Lys], c.2401G>T [Asp801Tyr]), which were associated with either RDP or AHC. The phenotypes CAPOS and RECA/FIPWE are mutation-specific, with all described patients with CAPOS carrying variant Glu818Lys and all except 1 patient with RECA/FIPWE carrying a variant involving AA residue 756.

CADD Scores

The mean CADD score for missense *ATP1A3* variants published in the literature as likely pathogenic/pathogenic was 26.5 (SD: 2.04). The mean CADD score for variants reported in ClinVar as likely benign/benign was 7.729 (SD: 5.27). This difference was statistically significant ($p < 3.49e-85$). The CADD scores of the novel variants identified in our patient cohort were similar to the variants published (mean: 25.98, SD: 1.65) (Figure 3).

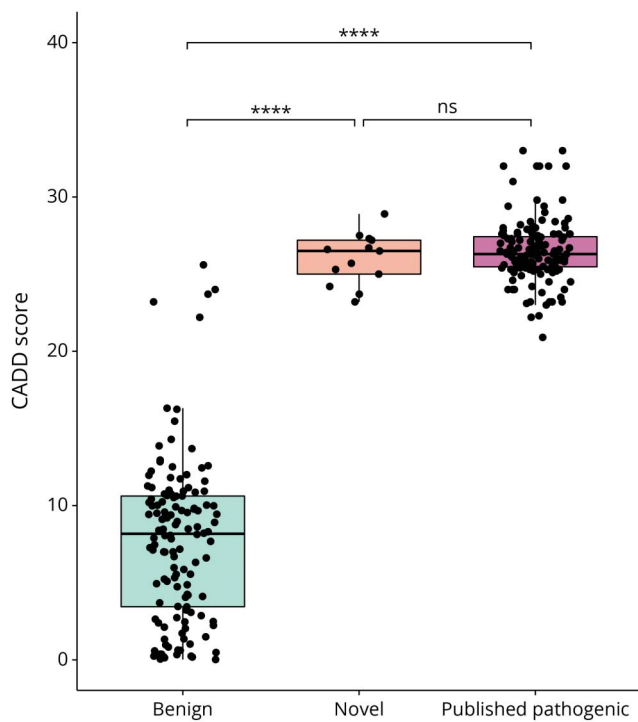
Constraint Analysis and Mutation Clusters

The most pathogenic and likely pathogenic variants identified both in the literature and this study lie within 6 clusters that correspond to benign missense variant deserts from the gnomAD database and vice versa (Figure 4). Benign missense constraint analysis identified gene deserts displayed as a heatmap. The 6 regions of constraint in which missense variation leads to pathogenicity are p.123-154, p.264-382, p.578-613, p.706-818, p.854-867, and p.887-955. These regions include key protein domains such as the transmembrane helices and the cytoplasmic P and N domains.

Discussion

In this study, we describe the genetic and clinical features of a heterogeneous cohort of individuals with pathogenic or likely pathogenic variants in the *ATP1A3* gene. Previous studies have mostly recruited patients with a specific *ATP1A3*-related phenotype, such as AHC, RDP, CAPOS, or RECA, resulting in the description of clinically homogeneous cohorts. The starting

Figure 3 CADD Scores



CADD scores associated with benign/likely benign *ATP1A3* variants published in ClinVar (green) are significantly lower than the novel *ATP1A3* variants in our patient cohort (orange) ($p = 2.94e-39$), and *ATP1A3* variants published as pathogenic in the literature (purple) ($p = 1.05e-84$). There is no significant difference between the novel and published pathogenic variants ($p = 0.167$). CADD = Combined Annotation-Dependent Depletion.

point of this study differed in that patients were recruited based on the detection of *ATP1A3* variants within a WES study aimed at using advanced genomics to diagnose individuals with previously undiagnosed developmental delay. The resulting cohort is clinically very heterogeneous, apart from a degree of cognitive impairment present in all patients. Only 2 individuals in our cohort, that were recruited through a collaborator rather than the DDD study, met Aicardi diagnostic criteria for AHC, and no individual met diagnostic criteria for either RDP or CAPOS. We believe that our data set represents a growing reality commonly faced by clinicians: The increasing phenotypic pleiotropy associated with *ATP1A3* variants and identification of variants of uncertain significance poses a number of diagnostic challenges.

In addition to the broad phenotypic spectrum, our cohort was also genetically heterogeneous, with shared variants only seen among the members of the 2 participating families (individuals 19a and 19b and individuals 21a, 21b, and 21c). The genetic heterogeneity of the cohort might be reflective of its phenotypic heterogeneity because some phenotype-genotype association is evident for *ATP1A3*-related phenotypes. As discussed, all 53 CAPOS individuals published so far are linked to the variant Glu818Lys, and 45 published RECA/

FIPWE cases are linked to variants involving substitution of arginine at residue 756. Within the AHC phenotype, it is also well documented that individuals with variant c.2443G>A (p.Glu815Lys) are more severely affected than individuals with variant c.2401G>A (p.Asp801Asn), while the third most common variant c.2839G>A/C (p.Gly947Arg) results in a milder phenotype.^{35,36} The 8 pathogenic variants mostly reported in the literature are associated with 1 specific phenotype (Figure 1).

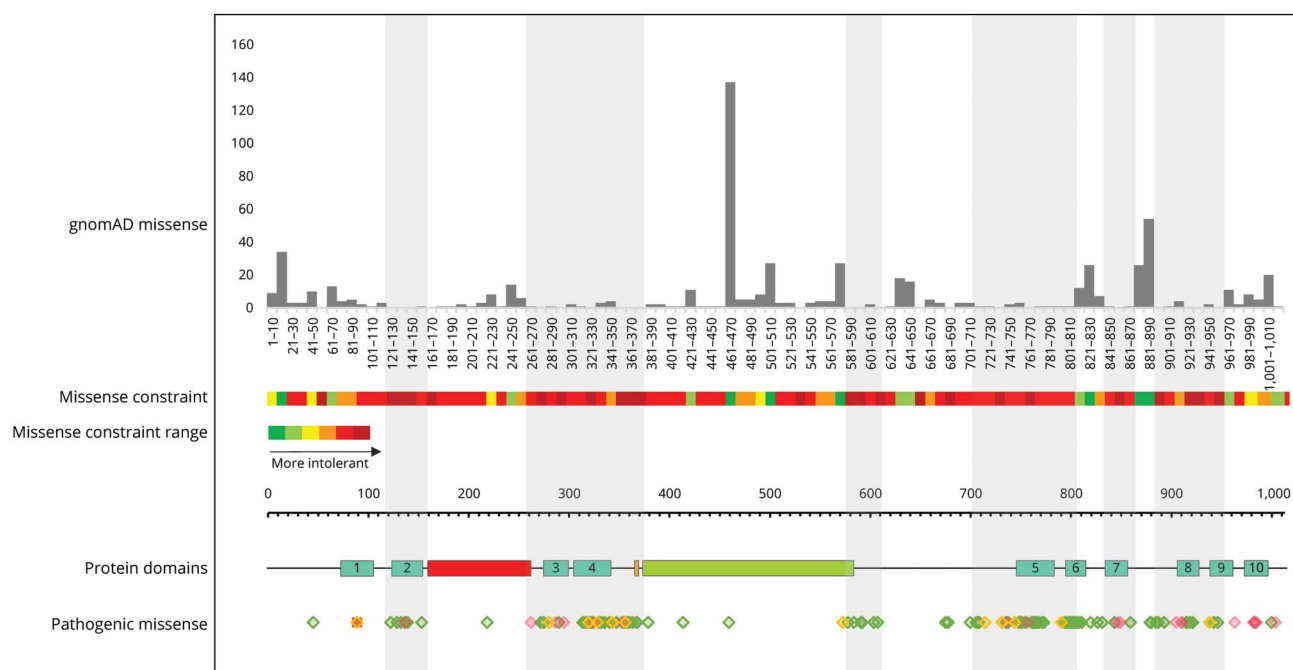
Looking at the phenotypes of individuals sharing the same *ATP1A3* variant, it seems that while some genotypes are strongly associated with specific phenotypes, there are others that result in more phenotypic variability, such as those associated with c.2116G>A (p.Gly706Arg) and c.2839G>T (p.Gly947Trp). However, this is an observation based on a very small number of individuals, and it might be that given the opportunity to look at larger cohorts of the rarer *ATP1A3* variants, mutation-specific phenotypes will arise as they have for c.2452G>A (p.Glu818Lys) and variants at amino acid residue 756. This is important information to gather because it may help clinicians provide families with more accurate prognosis after diagnosis.

Fifty percent of our patients were reported to have a history of epileptic seizures. In half of these, epileptiform features were seen on EEG. The epilepsy phenotype varied among patients, with some having focal seizures, while others had generalized epilepsy. This variability in epilepsy phenotype has been described previously in a study of 51 patients with an AHC phenotype,³⁷ where 32 individuals had an epilepsy diagnosis, 18 focal, and 11 generalized. Twenty-nine percent of our patients had a history of SE. Epilepsy treatment in this patient group is challenging. Many paroxysmal events are misdiagnosed as epilepsy and treated with antiepileptic medications with no benefit, whereas missing the epilepsy diagnosis in these patients might put them at risk of SE, which has been associated with severe aggravation of symptoms.³⁸ It is important to correctly classify the events patients are experiencing and have a low threshold to conduct video-EEG investigations if uncertain of the nature of occurring events. This is especially important in individuals with a higher risk of a more complex epilepsy phenotype, such as those carrying variant c.2443G>A (p.Glu815Lys).

Earlier studies of patient cohorts with a clinical phenotype of AHC mostly reported normal MRIs.³⁹ More recently, however, as the diverse phenotypes associated with *ATP1A3* are evolving, several reports of abnormal neuroimaging have also been published including cerebellar atrophy⁴⁰ and PMG.⁸⁻¹⁰ Eleven of our patients also had abnormal MRI, most commonly with cerebellar atrophy, in 1 case proven to be progressive.

A large European cohort study of 155 individuals with a clinical diagnosis of AHC conducted in 2010 reached the conclusion that AHC is a nonprogressive disease.⁴¹ However, recent publications dispute this at least for some patients with an AHC

Figure 4 Constraint Analysis



Missense allele counts for all *ATP1A3* missense variants were obtained from gnomAD v2.1.1. Missense amino acid substitutions are represented in grey (top section). We constructed a heatmap representing intolerance to missense changes, ranging from dark green through yellow, orange, and red with increasing intolerance (dark green = >20 variants, light green = 11–20 variants, yellow = 8–10 variants, light red 1–3 variants, dark red 0 variants). All pathogenic mutations from the literature (missense in green, small deletions/duplications in pink, and a sole frameshift mutation at residue 89 in red) and our cohort (all missense in yellow) and their distribution across the protein are shown (bottom section). The grey and white vertical shading represents mutation clusters and deserts, respectively. Highly constrained regions encompass transmembrane domains 2–9 (turquoise), the phosphorylation site (orange), and the end of the nucleotide binding site (green), while the actuator domain (red) is situated in a mutation desert.

phenotype.^{38,42} Little long-term data have been published for patients with other *ATP1A3*-related phenotypes. In our cohort, 21% (n = 5) of individuals had regression of skills over time. Although further longitudinal data are required, when counselling families, it may be important to discuss the risk of neurologic regression over time in *ATP1A3*-related disorders.

Traditionally, patients with an *ATP1A3*-related phenotype, such as AHC or RDP, have been diagnosed by using clinical diagnostic criteria.^{43,44} In recent years with the association of *ATP1A3* variants with a broadening clinical spectrum, this approach is not feasible for all patients because many do not fulfil classic phenotypic criteria. In addition, with broad genetic testing (gene panels, WES, and whole-genome sequencing) being brought into the diagnostic process at a much earlier stage, clinicians are often faced with an *ATP1A3* variant in an undiagnosed patient, trying to decide whether it is responsible for the phenotype, rather than having already reached a clinical diagnosis and using genetic investigations to confirm or inform it. We compared the phenotypic characteristics of our cohort with the diagnostic criteria published for AHC, RDP, CAPOS, and D-DEMØ (Table 1). Using the classic diagnostic criteria for AHC first introduced by Aicardi⁴⁵ and subsequently used as inclusion criteria in clinical studies of patients with AHC,⁴¹ only 2 patients in our cohort and none of our DDD cohort achieve a clinical AHC diagnosis. Very recently, these criteria have been

revised to include the presence of an *ATP1A3* variant and relaxed to describe a wider clinical spectrum of patients.⁴³ Applying the new criteria, 1 patient recruited through the DDD study and another 7 patients of our extended cohort are clinically diagnosable with AHC. None of our patients met criteria for either RDP or CAPOS, and 1 patient met criteria for D-DEMØ. Overall, we found that most of our patients cannot be grouped into any of the existing described phenotypes. Rosewich et al.⁴⁶ published major and minor criteria to support a diagnosis of an *ATP1A3*-related condition. The authors identified 5 major and 5 minor criteria for patients with infantile and early childhood onset, 6 major and 6 minor criteria for patients with childhood and adult onset, and 7 major and 7 minor criteria applicable for patients presenting at any age. Hence, for early onset, there are 12 major and 12 minor criteria overall, while for late onset, there are 13 major and 13 minor criteria. No cutoff is given as to how many criteria should be fulfilled to establish an *ATP1A3*-related condition diagnosis. In our cohort, 22 individuals had an onset in infancy/early childhood and 2 had an onset in later childhood or adulthood. All patients met at least 3 minor criteria. The only criteria met by all individuals in this cohort were cognitive impairment and negative family history or history suggesting autosomal dominant inheritance (both minor criteria). On average, patients met 3.4 major and 5 minor criteria. This approach of defining a spectrum of associated symptoms seems to be preferable for patients with *ATP1A3*-related disorders, if the threshold for the

number of criteria needing to be fulfilled to prompt testing is kept low.

In addition to this, we found that in our cohort, looking for a combination of broad symptom categories, namely paroxysmal symptoms, hyperkinetic symptoms, neuropsychiatric symptoms, and cognitive impairment, rather than specific symptom combinations, was more likely to identify patients with *ATPIA3*-related disorder. A CADD score above 20 and a variant located within the mutation clusters in regions of constraint further support the diagnosis of an *ATPIA3*-related disorder.

There are limitations to our study. The phenotypic information was collected in retrospect through patient interview or case note review, rather than prospective evaluation. The phenotypic information available for published cases is variable and sometimes limited; patients are reported at different ages, clinical information is collected retrospectively, and different authors focus on different symptoms.

Two-thirds of all published individuals with *ATPIA3*-related disorders carry one of the 8 most common variants and display one of the 4 most common phenotypes: AHC, RDP, CAPOS, or RECA/FIPWE. However, the remaining third of individuals carry another 160 *ATPIA3* variants, and their phenotypes are very variable forming a phenotypic continuum of paroxysmal, neurologic, developmental, and neuropsychiatric features. Nowadays, clinicians are often faced with novel variants of uncertain significance in genes associated with rare diseases. Looking for a combination of paroxysmal events, hyperkinesia, neuropsychiatric symptoms, and cognitive impairment, as well as evaluating CADD score and variant location, can aid in the diagnosis of an *ATPIA3*-related disorder. The ongoing collection of phenotypic information of individuals carrying rarer variants will help us discover further mutation-specific phenotypes and aid in disease prognosis and management.

Acknowledgment

The authors thank the patients and families involved in the study. The DDD study presents independent research commissioned by the Health Innovation Challenge Fund (Grant No. HICF-1009-003). This study makes use of DECIPHER (deciphergenomics.org), which is funded by Wellcome. Views expressed in this manuscript are those of the authors and not necessarily the funders'. The research team acknowledges the support from the National Institute for Health Research, through the Comprehensive Clinical Research Network. MB was funded by MRC (Ref: MR/V037307/1). SMS was supported by the Epilepsy Society.

Study Funding

No targeted funding reported.

Disclosure

The authors report no relevant disclosures. Go to Neurology.org/N for full disclosures.

Publication History

Received by *Neurology* December 13, 2021. Accepted in final form May 19, 2022. Submitted and externally peer reviewed. The handling editor was Renee Shellhaas, MD, MS.

Appendix Authors

Name	Location	Contribution
Aikaterini Vezyroglou, MD	Developmental Neurosciences, UCL Great Ormond Street Institute of Child Health, London, UK; Department of Neurology, Great Ormond Street Hospital, London, UK	Drafting/revision of the manuscript for content, including medical writing for content; major role in the acquisition of data; study concept or design; analysis or interpretation of data
Rhoda Akilapa, MBBS	Department of Clinical Genetics, Guy's and St Thomas' NHS Foundation Trust, Guy's Hospital, London, United Kingdom	Drafting/revision of the manuscript for content, including medical writing for content; major role in the acquisition of data; study concept or design
Katy Barwick, PhD	Developmental Neurosciences, UCL Great Ormond Street Institute of Child Health, London, UK	Drafting/revision of the manuscript for content, including medical writing for content; study concept or design; analysis or interpretation of data
Saskia Koene, PhD	Department of Clinical Genetics, Leiden University Medical Center, Leiden, The Netherlands	Drafting/revision of the manuscript for content, including medical writing for content; major role in the acquisition of data
Catherine A. Brownstein, PhD	Division of Genetics and Genomics, The Manton Center for Orphan Disease Research, Boston Children's Hospital, Boston, MA; Department of Pediatrics, Harvard Medical School, Boston, MA	Drafting/revision of the manuscript for content, including medical writing for content; major role in the acquisition of data
Muriel Holder-Espinasse, PhD	Department of Clinical Genetics, Guy's and St Thomas' NHS Foundation Trust, Guy's Hospital, London, United Kingdom	Drafting/revision of the manuscript for content, including medical writing for content; major role in the acquisition of data
Andrew E. Fry, MBBChB DPhil	All Wales Medical Genomics Service, NHS Wales Cardiff and Vale University Health Board, Institute of Medical Genetics, University Hospital of Wales, Cardiff, UK	Drafting/revision of the manuscript for content, including medical writing for content; major role in the acquisition of data
Andrea Hilary Németh, MBBS DPhil	Nuffield Department of Clinical Neurosciences, University of Oxford, Oxford, UK	Drafting/revision of the manuscript for content, including medical writing for content; major role in the acquisition of data
George K. Tofaris, PhD FRCP	Nuffield Department of Clinical Neurosciences, University of Oxford, Oxford, UK	Drafting/revision of the manuscript for content, including medical writing for content; major role in the acquisition of data

Appendix (continued)

Name	Location	Contribution
Eleanor Hay, MBBS MSc	Department of Clinical Genetics, Great Ormond Street Hospital, London, UK	Drafting/revision of the manuscript for content, including medical writing for content; major role in the acquisition of data
Imelda Hughes, MD	Department of Paediatric Neurology, Central Manchester University Hospitals NHS Foundation Trust, Manchester, UK	Major role in the acquisition of data
Sahar Mansour, MBBS	SW Thames Regional Genetics Service, St George's University Hospitals NHS Foundation Trust, UK	Drafting/revision of the manuscript for content, including medical writing for content; major role in the acquisition of data
Santosh R. Mordekar, MD	Department of Paediatric Neurology, Ryegate Children's Centre, Sheffield Children's Hospital, Sheffield, United Kingdom	Drafting/revision of the manuscript for content, including medical writing for content; major role in the acquisition of data
Miranda Splitt, MBBS MD	Institute of Genetic Medicine, Newcastle upon Tyne, UK	Drafting/revision of the manuscript for content, including medical writing for content; major role in the acquisition of data
Peter D. Turnpenney, MB ChB	Clinical Genetics, Royal Devon & Exeter NHS Foundation Trust, Exeter, UK	Drafting/revision of the manuscript for content, including medical writing for content; major role in the acquisition of data
Demetria Demetriou, MRCPCH	Aneurin Bevan University Health Board, Royal Gwent Hospital, Newport, UK	Major role in the acquisition of data
Tamara T. Koopmann, PhD	Department of Clinical Genetics, Leiden University Medical Center, Leiden, The Netherlands	Drafting/revision of the manuscript for content, including medical writing for content; major role in the acquisition of data
Claudia A.L. Ruivenkamp, PhD	Department of Clinical Genetics, Leiden University Medical Center, Leiden, The Netherlands	Major role in the acquisition of data
Pankaj B. Agrawal, MD MMSC	Division of Genetics and Genomics, The Manton Center for Orphan Disease Research, Boston Children's Hospital, Boston, MA; Department of Pediatrics, Harvard Medical School, Boston, MA; Division of Newborn Medicine, Boston Children's Hospital, Boston, MA	Drafting/revision of the manuscript for content, including medical writing for content; major role in the acquisition of data
Lucinda Carr, MD	Department of Neurology, Great Ormond Street Hospital, London, UK	Major role in the acquisition of data

Appendix (continued)

Name	Location	Contribution
Virginia Clowes, PhD	North West Thames Regional Genetics Service, Northwick Park Hospital, Middlesex, UK	Drafting/revision of the manuscript for content, including medical writing for content; major role in the acquisition of data
Neeti Ghali, MBChB MD	North West Thames Regional Genetics Service, Northwick Park Hospital, Middlesex, UK	Major role in the acquisition of data
Susan Elizabeth Holder, FRCP	North West Thames Regional Genetics Service, Northwick Park Hospital, Middlesex, UK	Drafting/revision of the manuscript for content, including medical writing for content; major role in the acquisition of data
Jessica Radley, MSc	North West Thames Regional Genetics Service, Northwick Park Hospital, Middlesex, UK	Drafting/revision of the manuscript for content, including medical writing for content; major role in the acquisition of data
Alison Male, FRCP	Department of Clinical Genetics, Great Ormond Street Hospital, London, UK	Drafting/revision of the manuscript for content, including medical writing for content; major role in the acquisition of data
Sanjay M. Sisodiya, MD, PhD	Department of Clinical and Experimental Epilepsy, UCL Queen Square Institute of Neurology, London, UK	Drafting/revision of the manuscript for content, including medical writing for content; study concept or design
Manju A Kurian, PhD	Developmental Neurosciences, UCL Great Ormond Street Institute of Child Health, London, UK; Department of Neurology, Great Ormond Street Hospital, London, UK	Drafting/revision of the manuscript for content, including medical writing for content; major role in the acquisition of data; study concept or design; analysis or interpretation of data; additional contributions: shared last author—J. Helen Cross; shared last author—Meena Balasubramanian
J. Helen Cross, PhD	Developmental Neurosciences, UCL Great Ormond Street Institute of Child Health, London, UK; Department of Neurology, Great Ormond Street Hospital, London, UK	Drafting/revision of the manuscript for content, including medical writing for content; major role in the acquisition of data; study concept or design; analysis or interpretation of data; additional contributions: shared last author—Manju A. Kurian; shared last author—Meena Balasubramanian
Meena Balasubramanian, PhD	Department of Oncology & Metabolism, University of Sheffield, Sheffield, UK; Sheffield Clinical Genetics Service, Sheffield Children's NHS Foundation Trust, Sheffield, UK	Drafting/revision of the manuscript for content, including medical writing for content; major role in the acquisition of data; study concept or design; analysis or interpretation of data; additional contributions: shared last author—Manju A. Kurian; shared last author—J. Helen Cross

References

1. Shrivastava AN, Triller A, Melki R. Cell biology and dynamics of Neuronal Na(+)/K(+)-ATPase in health and diseases. *Neuropharmacology*. 2020;169:107461. doi: 10.1016/j.neuropharm.2018.12.008.
2. Clausen MV, Hilbers F, Poulsen H. The structure and function of the Na, K-ATPase isoforms in health and disease. *Front Physiol*. 2017;8:371. doi: 10.3389/fphys.2017.00371.
3. de Carvalho Aguiar P, Sweadner KJ, Penniston JT, et al. Mutations in the Na+/K+-ATPase alpha3 gene ATP1A3 are associated with rapid-onset dystonia parkinsonism. *Neuron*. 2004;43(2):169-175. doi: 10.1016/j.neuron.2004.06.028.
4. Heinzen EL, Swoboda KJ, Hitomi Y, et al. De novo mutations in ATP1A3 cause alternating hemiplegia of childhood. *Nat Genet*. 2012;44(9):1030-1034. doi: 10.1038/ng.2358.
5. Demos MK, van Karnebeek CD, Ross CJ, et al. FORGE Canada Consortium. A novel recurrent mutation in ATP1A3 causes CAPOS syndrome. *Orphanet J Rare Dis*. 2014; 9:15. doi: 10.1186/1750-1172-9-15.
6. Duat Rodriguez A, Prochazkova M, Santos S, Rubio Cabezas O, Cantarin Extremera V, Gonzalez-Gutierrez-Solana L. Early diagnosis of CAPOS syndrome before acute-onset ataxia-review of the literature and a new family. *Pediatr Neurol*. 2017;71:60-64. doi: 10.1016/j.pediatrneurol.2017.01.009.
7. Paciorkowski AR, McDaniel SS, Jansen LA, et al. Novel mutations in ATP1A3 associated with catastrophic early life epilepsy, episodic prolonged apnea, and postnatal microcephaly. *Epilepsia*. 2015;56(3):422-430. doi: 10.1111/epi.12914.
8. Miyatake S, Kato M, Kumamoto T, et al. De novo ATP1A3 variants cause polymicrogyria. *Sci Adv*. 2021;7(13):eabd2368. doi: 10.1126/sciadv.abd2368.
9. Vetro A, Nielsen HN, Holm R, et al. ATP1A2- and ATP1A3-associated early profound epileptic encephalopathy and polymicrogyria. *Brain*. 2021;144(5):1435-1450.
10. Smith RS, Florio M, Akula SK, et al. Early role for a Na+, K+-ATPase (ATP1A3) in brain development. *Proc Natl Acad Sci U S A*. 2021;118(25):e2023333118. doi: 10.1073/pnas.2023333118.
11. Sabouraud P, Riquet A, Spitz MA, et al. Relapsing encephalopathy with cerebellar ataxia are caused by variants involving p.Arg756 in ATP1A3. *Eur J Paediatr Neurol*. 2019;23(3):448-455. doi: 10.1016/j.ejpn.2019.02.004.
12. Biela M, Rydzanicz M, Szymanska K, et al. Variants of ATP1A3 in residue 756 cause a separate phenotype of relapsing encephalopathy with cerebellar ataxia (RECA)—report of two cases and literature review. *Mol Genet Genomic Med*. 2021;9(9):e1772. doi: 10.1002/mgg3.1772.
13. Sival DA, Vansenne F, Van der Hout AH, Tijssen MAJ, de Koning TJ. Fever-induced paroxysmal weakness and encephalopathy (FIPWE)—part of a phenotypic continuum in patients with ATP1A3 mutations? *Pediatr Neurol*. 2018;81:57-58. doi: 10.1016/j.pediatrneurol.2017.12.009.
14. Smedemark-Margulies N, Brownstein CA, Vargas S, et al. A novel de novo mutation in ATP1A3 and childhood-onset schizophrenia. *Cold Spring Harb Mol Case Stud*. 2016; 2(5):a001008. doi: 10.1101/mcs.a001008.
15. Prange L, Pratt M, Herman K, et al. D-DEMØ, a distinct phenotype caused by ATP1A3 mutations. *Neurol Genet*. 2020;6(5):e466. doi: 10.1212/NXG.0000000000000466.
16. Salles P, Fernandez HH. Untangling the complicated web of ATP1A3 mutations. *Parkinsonism Relat Disord*. 2020;78:186-188. doi: 10.1016/j.parkreldis.2020.09.010.
17. Wright CF, Fitzgerald TW, Jones WD, et al. DDD study. Genetic diagnosis of developmental disorders in the DDD study: a scalable analysis of genome-wide research data. *Lancet (London, England)*. 2015;385(9975):1305-1314. doi: 10.1016/S0140-6736(14)61705-0. ddduk.org/.
18. Kumar P, Henikoff S, Ng PC. Predicting the effects of coding non-synonymous variants on protein function using the SIFT algorithm. *Nat Protoc*. 2009;4(7): 1073-1081. doi: 10.1038/nprot.2009.86.
19. Choi Y, Chan AP. PROVEAN web server: a tool to predict the functional effect of amino acid substitutions and indels. *Bioinformatics*. 2015;31(16):2745-2747. doi: 10.1093/bioinformatics/btv195.
20. Schwarz JM, Cooper DN, Schuelke M, Seelow D. MutationTaster2: mutation prediction for the deep-sequencing age. *Nat Methods*. 2014;11(4):361-362. doi: 10.1038/nmeth.2890.
21. Kircher M, Witten DM, Jain P, O'Roak BJ, Cooper GM, Shendure J. A general framework for estimating the relative pathogenicity of human genetic variants. *Nat Genet*. 2014;46(3):310-315. doi: 10.1038/ng.2892.
22. Genome Aggregation Database. Accessed March 2022. gnomad.broadinstitute.org/.
23. Richards S, Aziz N, Bale S, et al. ACMG Laboratory Quality Assurance Committee. Standards and guidelines for the interpretation of sequence variants: a joint consensus recommendation of the American college of medical genetics and genomics and the association for molecular pathology. *Genet Med*. 2015;17(5):405-424. doi: 10.1038/gim.2015.30.
24. Rentzsch P, Witten D, Cooper GM, Shendure J, Kircher M. CADD: predicting the deleteriousness of variants throughout the human genome. *Nucleic Acids Res*. 2019; 47(D1):D886-D894. doi: 10.1093/nar/gky1016.
25. Itan Y, Shang L, Boisson B, et al. The mutation significance cutoff: gene-level thresholds for variant predictions. *Nat Methods*. 2016;13(2):109-110. doi: 10.1038/nmeth.3739.
26. Karczewski KJ, Francioli LC, Tiao G, et al. The mutational constraint spectrum quantified from variation in 141, 456 humans. *Nature*. 2020;581(7809):434-443. doi: 10.1038/s41586-020-2308-7.
27. Torres A, Brownstein CA, Tembulkar SK, et al. De novo ATP1A3 and compound heterozygous NLRP3 mutations in a child with autism spectrum disorder, episodic fatigue and somnolence, and muckle-wells syndrome. *Mol Genet Metab Rep*. 2018;16: 23-29. doi: 10.1016/j.ymgmr.2018.06.001.
28. Trump N, McTague A, Brittain H, et al. Original article: improving diagnosis and broadening the phenotypes in early-onset seizure and severe developmental delay disorders through gene panel analysis. *J Med Genet*. 2016;53(5):310-317. doi: 10.1136/jmedgenet-2015-103263.
29. Moya-Mendez ME, Ogbonna C, Ezekian JE, et al. ATP1A3-encoded Sodium-Potassium ATPase subunit alpha 3 D801N variant is associated with shortened QT interval and predisposition to ventricular fibrillation preceded by bradycardia. *J Am Heart Assoc*. 2021;10(17):e019887. doi: 10.1161/JAHA.120.019887.
30. Pereira P, Guerreiro A, Fonseca M, Halpern C, Pinto-Basto J, Monteiro JP. A distinct phenotype in a novel ATP1A3 mutation: connecting the two ends of a spectrum. *Mov Disord Clin Pract*. 2016;3(4):398-401. doi: 10.1002/mdc3.12263.
31. Yang X, Gao H, Zhang J, et al. ATP1A3 mutations and genotype-phenotype correlation of alternating hemiplegia of childhood in Chinese patients. *PLoS One*. 2014; 9(5):e97274. doi: 10.1371/journal.pone.0097274.
32. Holze N, Baalen Avan, Stephani U, Helbig J, Muhle H. Variants in the ATP1A3 gene mutations within severe apnea starting in early infancy: an observational study of two cases with a possible relation to epileptic activity. *Neuropediatrics*. 2018;49(5): 342-346. doi: 10.1055/s-0038-1653978.
33. Hully M, Ropars J, Hubert L, et al. Mosaicism in ATP1A3-related disorders: not just a theoretical risk. *Neurogenetics*. 2017;18(1):23-28. doi: 10.1007/s10048-016- 0498-9.
34. Panagiotakaki E, De Grandis E, Stagnaro M, et al. Clinical profile of patients with ATP1A3 mutations in Alternating Hemiplegia of Childhood—a study of 155 patients. *Orphanet J Rare Dis*. 2015;10:123. doi: 10.1186/s13023-015-0335-5.
35. Sasaki M, Ishii A, Saito Y, et al. Genotype-phenotype correlations in alternating hemiplegia of childhood. *Neurology*. 2014;82(6):482-490. doi: 10.1212/WNL.0000000000000102.
36. Uchitel J, Helseth A, Prange L, et al. The epileptology of alternating hemiplegia of childhood. *Neurology*. 2019;93(13):e1248-e1259. doi: 10.1212/WNL.00000000000008159.
37. Ito T, Narugami M, Egawa K, et al. Long-term follow up of an adult with alternating hemiplegia of childhood and a p.Gly755Ser mutation in the ATP1A3 gene. *Brain Dev*. 2018;40(3):226-228. doi: 10.1016/j.braindev.2017.11.007.
38. Mikati MA, Kramer U, Zupanc ML, Shanahan RJ. Alternating hemiplegia of childhood: clinical manifestations and long-term outcome. *Pediatr Neurol*. 2000; 23(2):134-141.
39. Sasaki M, Sumitomo N, Shimizu-Motohashi Y, et al. ATP1A3 variants and slowly progressive cerebellar ataxia without paroxysmal or episodic symptoms in children. *Dev Med Child Neurol*. 2021;63(1):111-115. doi: 10.1111/dmnc.14666.
40. Panagiotakaki E, Gobbi G, Neville B, et al. Evidence of a non-progressive course of alternating hemiplegia of childhood: study of a large cohort of children and adults. *Brain*. 2010;133(pt 12):3598-3610. doi: 10.1093/brain/awq295.
41. Perulli M, Poole J, Di Lazzaro G, et al. Non-stationary outcome of alternating hemiplegia of childhood into adulthood. *Mov Disord Clin Pract*. 2022;9(2):206-211. doi: 10.1002/mdc3.13388.
42. Mikati MA, Panagiotakaki E, Arzimanoglou A. Revision of the diagnostic criteria of alternating hemiplegia of childhood. *Eur J Paediatr Neurol*. 2021;32:A4-A5. doi: 10.1016/j.ejpn.2021.05.004.
43. Haq IU, Snively BM, Sweadner KJ, et al. Revising rapid-onset dystonia-parkinsonism: broadening indications for ATP1A3 testing. *Mov Disord*. 2019;34(10):1528-1536. doi: 10.1002/mds.27801.
44. Bourgeois M, Aicardi J, Goutieres F. Alternating hemiplegia of childhood. *J Pediatr*. 1993;122(5 pt 1):673-679. doi: 10.1016/s0022-3476(06)80003-x.
45. Rosewich H, Sweney MT, DeBrosse S, et al. Research conference summary from the 2014 international task force on atp1a3-related disorders. *Neurol Genet*. 2017; 3(2):e139. doi: 10.1212/NXG.0000000000000139.

Neurology®

The Phenotypic Continuum of *ATP1A3*-Related Disorders

Aikaterini Vezyroglou, Rhoda Akilapa, Katy Barwick, et al.

Neurology 2022;99:e1511-e1526 Published Online before print July 18, 2022

DOI 10.1212/WNL.0000000000200927

This information is current as of July 18, 2022

Updated Information & Services	including high resolution figures, can be found at: http://n.neurology.org/content/99/14/e1511.full
References	This article cites 44 articles, 8 of which you can access for free at: http://n.neurology.org/content/99/14/e1511.full#ref-list-1
Subspecialty Collections	This article, along with others on similar topics, appears in the following collection(s): All Movement Disorders http://n.neurology.org/cgi/collection/all_movement_disorders Developmental disorders http://n.neurology.org/cgi/collection/developmental_disorders
Permissions & Licensing	Information about reproducing this article in parts (figures, tables) or in its entirety can be found online at: http://www.neurology.org/about/about_the_journal#permissions
Reprints	Information about ordering reprints can be found online: http://n.neurology.org/subscribers/advertise

Neurology® is the official journal of the American Academy of Neurology. Published continuously since 1951, it is now a weekly with 48 issues per year. Copyright © 2022 The Author(s). Published by Wolters Kluwer Health, Inc. on behalf of the American Academy of Neurology. All rights reserved. Print ISSN: 0028-3878. Online ISSN: 1526-632X.

