

Association of semi-quantitative cryptococcal antigen results in plasma with subclinical cryptococcal meningitis and mortality among patients with advanced HIV disease

Journal:	<i>Medical Mycology</i>
Manuscript ID	MM-2021-0077.R2
Manuscript Type:	Original Article
Date Submitted by the Author:	n/a
Complete List of Authors:	Blasich, Nozuko; National Institute for Communicable Diseases, CHARM Wake, Rachel; St George's University of London Institute for Infection and Immunity Rukasha, Ivy; National Institute for Communicable Diseases, CHARM Prince, Yvonne; Cape Peninsula University of Technology - Bellville Campus Govender, Nelesh; National Institute for Communicable Diseases, CHARM
Keyword:	Cryptococcus, Cryptococcal antigen, Lateral flow assay, Semi-quantitative, Subclinical, Cryptococcal meningitis
Abstract:	Blood cryptococcal antigen (CrAg) titres >160 are associated with concurrent subclinical cryptococcal meningitis (CM). When lumbar puncture (LP) is not immediately available in a CrAg screening programme, semi-quantitative CrAg assays may provide risk stratification for CM. Two semi-quantitative assays (SQ [Immuno-Mycologics, Norman, OK, USA] and CryptoPS [Biosynex, Strasbourg, France]) were evaluated against a qualitative lateral flow assay (LFA) using 194 plasma samples from a cohort of HIV-seropositive individuals with CD4 counts <100 cells/ μ L. We compared SQ and CryptoPS results to titres for LFA-positive samples. Among patients with LP, we examined the association between semi-quantitative CrAg results and CM. We used a Cox proportional hazards model to determine the association between SQ score and mortality. Of 194 participants, 60 (31%) had positive LFA results, of whom 41 (68%) had a titre of \leq 160 and 19 (32%) a titre >160. Fifty individuals with antigenaemia had an LP; a clinically-useful SQ score that identified all ten cases of subclinical CM was \geq 3 (100% sensitivity, 55% specificity). Patients with an SQ score of 3 or 4 also had a 2.2-fold increased adjusted hazards of 6-month mortality (95% CI, 0.79-6.34; $p=0.13$) versus those with score of <3. Nine of ten patients

1
2
3
4
5
6
7
8
9
10
11
12
13
14
15
16
17
18
19
20
21
22
23
24
25
26
27
28
29
30
31
32
33
34
35
36
37
38
39
40
41
42
43
44
45
46
47
48
49
50
51
52
53
54
55
56
57
58
59
60

	with subclinical CM had a strong-positive CryptoPS result versus 10/40 without subclinical CM ($p < 0.001$). Semi-quantitative assays offered a sensitive though not specific means of gauging the risk of concurrent CM in this patient population.

SCHOLARONE™
Manuscripts

1
2
3 **Association of semi-quantitative cryptococcal antigen results in plasma with**
4 **subclinical cryptococcal meningitis and mortality among patients with**
5 **advanced HIV disease**
6
7
8
9

10
11 Nozuko P. Blasich^{1,2}, Rachel M. Wake^{1,3}, Ivy Rukasha¹, Yvonne Prince², Nelesh P.
12
13 Govender^{1,4,5}
14
15

- 16
17 1. National Institute for Communicable Diseases (Centre for Healthcare-Associated
18 Infections, Antimicrobial Resistance and Mycoses), a Division of the National
19 Health Laboratory Service, Johannesburg, South Africa
20
21
22
23 2. Department of Biomedical Sciences, Faculty of Health and Wellness, Cape
24 Peninsula University of Technology, Cape Town, South Africa
25
26
27
28 3. Institute of Infection & Immunity, St George's, University of London, United
29 Kingdom
30
31
32
33 4. School of Pathology, Faculty of Health Sciences, University of the Witwatersrand,
34 Johannesburg, South Africa
35
36
37 5. Division of Medical Microbiology, Faculty of Health Sciences, University of Cape
38 Town, Cape Town, South Africa
39
40
41

42 Corresponding author and address: Professor Nelesh Govender, National Institute
43 for Communicable Diseases, 1 Modderfontein Road, Sandringham 2131,
44 Johannesburg, South Africa. Email: neleshg@nicd.ac.za. Tel: +27 11 555 0353.
45
46
47
48
49

50 Running head: Semi-quantitative CrAg assays and subclinical cryptococcal
51 meningitis
52
53
54

55 Word count (body): 2562
56
57
58
59
60

Semi-quantitative CrAg assays and subclinical cryptococcal meningitis

Keywords: *Cryptococcus*, cryptococcal antigen, antigenaemia, lateral flow assay, semi-quantitative, subclinical, cryptococcal meningitis

For Peer Review Only

Semi-quantitative CrAg assays and subclinical cryptococcal meningitis

Abstract

Blood cryptococcal antigen (CrAg) titres >160 are associated with concurrent subclinical cryptococcal meningitis (CM). When lumbar puncture (LP) is not immediately available in a CrAg screening programme, semi-quantitative CrAg assays may provide risk stratification for CM. Two semi-quantitative assays (SQ [Immuno-Mycologics, Norman, OK, USA] and CryptoPS [Biosynex, Strasbourg, France]) were evaluated against a qualitative lateral flow assay (LFA) using 194 plasma samples from a cohort of HIV-seropositive individuals with CD4 counts <100 cells/ μ L. We compared SQ and CryptoPS results to titres for LFA-positive samples. Among patients with LP, we examined the association between semi-quantitative CrAg results and CM. We used a Cox proportional hazards model to determine the association between SQ score and mortality. Of 194 participants, 60 (31%) had positive LFA results, of whom 41 (68%) had a titre of \leq 160 and 19 (32%) a titre >160. Fifty individuals with antigenaemia had an LP; a clinically-useful SQ score that identified all ten cases of subclinical CM was \geq 3 (100% sensitivity, 55% specificity). Patients with an SQ score of 3 or 4 also had a 2.2-fold increased adjusted hazards of 6-month mortality (95% CI, 0.79-6.34; $p=0.13$) versus those with score of <3. Nine of ten patients with subclinical CM had a strong-positive CryptoPS result versus 10/40 without subclinical CM ($p<0.001$). Semi-quantitative assays offered a sensitive though not specific means of gauging the risk of concurrent CM in this patient population.

Lay summary: We evaluated two single-step laboratory tests that can quantify the amount of cryptococcal antigen in plasma of patients with advanced HIV disease and

Semi-quantitative CrAg assays and subclinical cryptococcal meningitis

could thus gauge the risk of concurrent cryptococcal meningitis and subsequent mortality. These tests are not a substitute for a lumbar puncture.

For Peer Review Only

Semi-quantitative CrAg assays and subclinical cryptococcal meningitis

Introduction

HIV-associated cryptococcal meningitis (CM), caused by *Cryptococcus neoformans* in the vast majority of cases and less frequently by *Cryptococcus gattii*, accounts for an estimated 15% of AIDS-related deaths in sub-Saharan Africa ¹. A lateral flow assay (LFA) (Immuno-Mycologics Inc. [IMMY], Norman, OK, USA) can detect cryptococcal antigen (CrAg) in plasma, serum, whole blood and cerebrospinal fluid (CSF) very accurately ²⁻³. Reflex laboratory CrAg screening using this LFA to test remnant blood samples with a CD4+ T-cell count of <100 cells/ μ L has been routinely performed across a national network of CD4 laboratories in South Africa since 2016 ⁴⁻⁵. Patients with cryptococcal antigenaemia are recommended to be routinely investigated for CM since up to 40% may have subclinical CM ⁵. Pre-emptive fluconazole therapy is offered to asymptomatic patients with no microbiological evidence of CM ⁶⁻⁷. Despite pre-emptive fluconazole, CrAg-positive patients have a 2- to 3-fold increased risk of mortality compared to CrAg-negative patients with similar CD4 counts, suggesting that this treatment regimen may be inadequate ⁸⁻⁹. Combination treatment regimens are being compared to fluconazole monotherapy for people with antigenaemia in the ongoing EFFECT and ACACIA clinical trials. ¹⁰⁻¹¹ Furthermore, lumbar punctures for all CrAg-positive individuals are not possible in many low-resource settings in sub-Saharan Africa and the rate of refusal among asymptomatic patients is high ^{5,8,12}. In addition, contraindications to lumbar puncture include significant coagulopathy and a suspected space-occupying lesion based on recurrent seizures or focal central nervous system signs. Therefore, an enhanced CrAg-screening strategy involving risk-stratification using antigen quantification needs to be evaluated. A CrAg LFA titre in blood can stratify the risk of subclinical CM prior to lumbar puncture. A blood titre of >160 had 88.2% sensitivity and 82.1%

Semi-quantitative CrAg assays and subclinical cryptococcal meningitis

specificity to predict concurrent subclinical CM in a cohort of CrAg-screened adults with a CD4 count of <100 cells/ μL ¹³. However, measuring CrAg titres using serial dilutions of CrAg-positive blood samples is costly and challenging to implement in high-volume pathology laboratories. Approximately 10 LFA strips were required for serial dilutions and an experienced technician took approximately 20 minutes to obtain a single CrAg titre result (unpublished data, National Institute for Communicable Diseases). Semi-quantitative CrAg assays could provide a simple single-step alternative, assisting clinicians to gauge the probability of subclinical CM among people with antigenaemia prior to lumbar puncture. We evaluated the accuracy of the SQ (Immy) and CryptoPS assays (Biosynex, Strasbourg, France) compared to the currently-used LFA in stored samples from a cohort of CrAg-screened HIV-seropositive patients with a CD4 count of <100 cells/ μL . We also determined the association of SQ assay results with subclinical CM and mortality.

Materials and methods

A prospective cohort study was conducted at Helen Joseph and Tambo Memorial hospitals in Johannesburg, South Africa from June 2015 through to October 2017^{9,13}. HIV-seropositive adults aged ≥ 18 years with a CD4 count of <100 cells/ μL and no symptoms or signs of CM, who were identified during routine reflex laboratory CrAg screening, were recruited. For each CrAg-positive participant, two CrAg-negative participants were concurrently enrolled with a similar CD4 count. Lumbar punctures were performed for a subset of asymptomatic CrAg-positive patients to investigate for subclinical CM at enrolment and all participants were followed up for 6 months. CrAg LFA titres were determined using ethylene diamine tetra acetic acid (EDTA)-plasma samples stored at -70°C . Concurrent subclinical CM was defined as

Semi-quantitative CrAg assays and subclinical cryptococcal meningitis

1
2
3 a positive CSF India ink microscopy, CrAg test or culture for *Cryptococcus* at the
4
5 time of study enrollment, when the patient was attending for the result of their
6
7 screening CrAg test. The full details of the study methods, participants and
8
9 relationship between titres, subclinical CM and mortality have been published
10
11 elsewhere ¹³.

12
13
14
15 For this sub-study, we retrieved stored EDTA-plasma samples from 201 study
16
17 participants and re-tested 194 samples (60 CrAg-positive; 134 CrAg-negative) at an
18
19 ISO 15189-accredited reference medical laboratory. Seven samples were excluded
20
21 after they were visually assessed and found not suitable for re-testing due to a high
22
23 lipid content, insufficient volume or high viscosity. All additional CrAg testing was
24
25 performed as per the manufacturers' instructions. Trained laboratory personnel
26
27 (N.P.B. and I.R.) performing the SQ and CryptoPS assays were blinded to
28
29 previously-recorded LFA qualitative and titre results. All samples were tested once
30
31 with SQ and CryptoPS assays; repeat testing was later performed if the qualitative
32
33 result yielded by the semi-quantitative assays was found to be different to those of
34
35 the LFA. SQ testing was performed by mixing 40 µl of plasma and 1 drop of diluent
36
37 in a test tube, inserting a test strip into the mixture and reading the results at 10
38
39 minutes. For SQ-positive specimens, the SQ interpretation card was used as an aid
40
41 to scoring from 1 to 5 based on the presence or absence of T1 and T2 lines. For the
42
43 CryptoPS assay, 20 µl of plasma and 3 drops of diluent were added to the sample
44
45 well of the cassette and results were read after 10 minutes. The presence of a T1
46
47 line was interpreted as a positive result and both T1 and T2 lines recorded as a
48
49 strong-positive result. All samples were also tested using a CrAg enzyme
50
51 immunoassay (EIA) (Immy), for which results were obtained using an absorbance
52
53 microplate reader at 450nm and 630nm wavelengths, BioTek EL808 (BioTek
54
55
56
57
58
59
60

Semi-quantitative CrAg assays and subclinical cryptococcal meningitis

instruments, Inc., Winooski, VT). Samples with optical density (OD) readings of ≤ 0.265 were interpreted as negative, and positive if the OD reading was > 0.265 .

We calculated the sensitivity and specificity (with 95% confidence intervals [CI]) of qualitative results yielded by the SQ and CryptoPS assays compared to those of the LFA. We used the LFA as the primary reference method because this assay has been validated for use in the national CrAg screening programme. We used EIA results to resolve discrepancies. We also calculated diagnostic likelihood odds ratios. For LFA-positive samples, we compared SQ scores and CryptoPS results to titres. For the sub-set of patients with CSF CrAg results, a receiver operating characteristic (ROC) curve was used to assess cut-off SQ scores for detecting subclinical CM. A chi-square test was used to assess the association between CryptoPS results and subclinical CM. We used a Cox proportional hazards model to determine the association between plasma SQ scores and mortality. A high SQ score was defined as 3 or 4 and a low score as 1 or 2. We plotted Kaplan-Meier survival curves over 6 months of follow-up for the cohort by SQ score category.

Ethics approval was obtained for the cohort study from the University of the Witwatersrand and the London School of Hygiene and Tropical Medicine. Additional ethics approval was granted by Cape Peninsula University of Technology to use the archived plasma samples to evaluate the SQ and CryptoPS assays.

Results

Of the 194 study participants included in this analysis, the routinely-performed standard CrAg LFA results were positive for 60 and negative for 134. Of the 60 with antigenaemia, 41 (68%) had a titre of ≤ 160 and 19 (32%) a titre > 160 .

Semi-quantitative CrAg assays and subclinical cryptococcal meningitis

The sensitivity and specificity of qualitative results from the SQ assay was 98.3% (59/60 95% CI 91.1- 100) and 100% (134/134 95% CI 95.97-100) compared to the LFA (Table 1). A single LFA-positive/SQ-negative sample had a CrAg titre of 20 and was also EIA-negative. Of 41 participants with a CrAg titre of ≤ 160 , 40 had SQ scores of 1, 2 or 3 and 1 had a negative SQ result. Of the 19 with titres of > 160 , 18 had SQ scores of ≥ 3 and 1 had an SQ score of 2 (Figure 1). Of 60 participants with antigenaemia, 50 had a lumbar puncture performed (Table 2). Of 10 who were diagnosed with subclinical CM, 5 had titres ranging from 1280 to 163840 and an SQ score of 4. The other 5 had titres that ranged from 80 to 327680 with an SQ score of 3. Of the 40 without subclinical CM, 22 (55%) had an SQ score of < 3 and 18 (45%) had a score of ≥ 3 . The area under the ROC curve for the association between SQ score and subclinical CM was 0.85 (95% CI, 0.75-0.95) (Figure 2). A cut-off SQ score of ≥ 3 had 100% sensitivity and 55% specificity (Table 3 and Figure 2). Patients with a plasma SQ score of ≥ 3 also had a hazard ratio for death within 6 months of 2.20 (95%CI, 0.79-6.34; $p=0.13$) compared to those with a low score, after adjusting for CD4 count (Figure 3 and 4).

In contrast, the CryptoPS assay had 90% sensitivity (54/60; 95%CI, 79.49-96.24) and 94.8% specificity (127/134; 95%CI, 88.66-97.41) compared to LFA for qualitative results (Table 1). Thirteen samples had discordant LFA and CryptoPS qualitative results. Of the 6 CryptoPS-negative/LFA-positive samples, 3 had titres of 10, 1 had a titre of 5 and 2 had titres of < 5 . The EIA confirmed 5 of these samples as CrAg positive. The sixth sample was EIA-negative and had a titre of < 5 . Of the 7 CryptoPS-positive/LFA-negative samples, all sample dilutions were LFA-negative and the EIA was negative. Of 41 participants with a positive LFA result and a titre of ≤ 160 , 6 had negative CryptoPS results, 29 had positive results and 6 had strong

Semi-quantitative CrAg assays and subclinical cryptococcal meningitis

positive results. Of the 19 with a positive LFA result and a titre of >160, 15 (78%) had strong positive CryptoPS results; the other 4 had positive CryptoPS results (Table 4). Nine of ten patients with subclinical CM had a strong-positive CryptoPS result versus 10/40 without subclinical CM ($p < 0.001$). Compared to a lumbar puncture diagnosis of subclinical CM, the sensitivity and specificity of a strong-positive CryptoPS result was 90% (9/10; 95% CI, 55.5-99.7) and 75% (30/40; 95% CI, 58.8-87.3) respectively.

Discussion

In this re-evaluation of stored plasma samples from a prospective cohort study, the SQ assay was simple and rapid to perform with identical testing steps to a single-strip qualitative LFA and an equivalent accuracy for CrAg detection in stored plasma. Using a cut-off score of ≥ 3 , the SQ assay detected all cases of subclinical CM but had low specificity. A cut-off score of ≥ 4 reduced the sensitivity of this assay substantially but was much more specific for CM. For the purposes of risk stratification for subclinical CM among patients with antigenaemia, a more sensitive cut-off (i.e. a score of ≥ 3) is preferable and specificity is a far less important consideration, given that lumbar puncture is now universally recommended. Although the CryptoPS assay did not perform well as a qualitative assay compared to the LFA, a strong-positive result was a relatively sensitive screening test for subclinical CM, though this was also not specific.

As previously reported, the SQ assay accurately detected CrAg compared to the LFA¹⁴⁻¹⁵. In our study, only one low-titre sample had a negative SQ result. In contrast, the CryptoPS assay incorrectly classified a higher proportion (5/33; 15%) of low-titre samples as negative and also yielded 7 false-positive results. All 7 participants with false-positive CryptoPS results did not receive antifungal treatment

1 Semi-quantitative CrAg assays and subclinical cryptococcal meningitis

2
3 and none progressed to CM during 6 months of follow-up. In an evaluation of the
4
5 same assay in Botswana, a lower sensitivity (61%) but higher specificity (97%) was
6
7 reported. In this study, 29 patients with false-positive CryptoPS results were followed
8
9 up for 3 months and none developed CM ¹⁶.

10
11
12
13 Since a blood CrAg titre cut-off of >160 had previously been identified as a threshold
14
15 for subclinical CM ^{3,13}, we evaluated the accuracy of the two semi-quantitative
16
17 assays in categorising plasma samples with a titre ≤ 160 and >160 . All samples but
18
19 one with an SQ score of <3 had a titre of <160. All samples with a score of >3 had a
20
21 titre of >160. However, a score of 3 did not clearly distinguish between these two titre
22
23 categories. Although a strong-positive CryptoPS result identified 76% of samples
24
25 with a CrAg titre of >160, 18% of samples with a titre of ≤ 160 also had strong-
26
27 positive results. In their evaluation, Tenforde et al also reported a single LFA-
28
29 positive results. In their evaluation, Tenforde et al also reported a single LFA-
30
31 negative plasma sample with a strong-positive CryptoPS result.¹⁶

32
33
34
35 We went on to investigate the relationship between plasma semi-quantitative assay
36
37 results and subclinical CM. Semi-quantitative CrAg assays performed on blood are
38
39 not a substitute for lumbar puncture which is universally recommended for all
40
41 patients with a new diagnosis of antigenaemia. However, such assays could be used
42
43 to refine the pre-test probability of subclinical meningitis, especially at the primary
44
45 healthcare level where patients need to be referred to hospital for a lumbar puncture
46
47 or in settings where a high proportion of patients decline lumbar puncture. A score of
48
49 ≥ 4 was highly specific for concurrent CM, though half of the cases in our study were
50
51 missed at this threshold. A lower threshold (score ≥ 3) included all cases of CM and
52
53 would thus be a more clinically useful risk prediction cut-off, despite also including
54
55 18/40 (45%) of cases without subclinical CM. Based on a sample of 189 screened
56
57
58
59
60

Semi-quantitative CrAg assays and subclinical cryptococcal meningitis

1
2
3 patients, approximately one third of whom had lumbar punctures, the
4
5 aforementioned Botswana study reported a strong association between plasma SQ
6
7 score and central nervous system involvement at baseline (a composite endpoint of
8
9 microbiologically-confirmed CM and/or clinical signs of meningitis).¹⁴ Individuals with
10
11 SQ scores of 2 or 3 were classified as being at moderate risk of central nervous
12
13 system involvement and mortality, with a preliminary recommendation for more
14
15 intensive evaluation including lumbar puncture. In our study, a strong-positive
16
17 CryptoPS result was relatively sensitive and picked up 9 of 10 cases of subclinical
18
19 CM but also 10/40 (25%) of those without CM. The lack of a clearer association
20
21 between the semi-quantitative CrAg results and subclinical CM in our study might be
22
23 explained by a smaller sample size since we restricted our analysis to patients who
24
25 had a lumbar puncture. We found that CrAg-positive patients with an SQ score of ≥ 3
26
27 had a more than two-fold increase in mortality though the 95% CI spanned 1. In
28
29 contrast to Jarvis et al, we did not find that the hazards of death increased with each
30
31 step-wise increase in SQ score. Again, this may be related to a smaller sample size.
32
33 Compared to testing serial sample dilutions to obtain LFA titres, the SQ assay was a
34
35 much less laborious method of obtaining a semi-quantitative CrAg result using a
36
37 single test strip. SQ testing was easy to perform but reading the SQ test strip was
38
39 more complex and the result interpretation card was needed to obtain an SQ score.
40
41 For instance, for a CrAg-negative result, only a control line is positive with the LFA,
42
43 whereas with the SQ assay, both the control and the T2 lines are positive. Moreover,
44
45 grading of scores 1, 2 and 3 is determined by comparing the intensity of the T1 and
46
47 T2 bands. Through an inter-laboratory comparison, we have identified reading and
48
49 interpretation errors for the LFA in the national CrAg screening programme and
50
51 expect that the complexity of reading the SQ test strips would increase the
52
53
54
55
56
57
58
59
60

Semi-quantitative CrAg assays and subclinical cryptococcal meningitis

1
2
3 proportion of erroneous readings. Using automated readers to read the SQ test
4
5 strips could be considered to prevent such errors. Automated readers may also offer
6
7 an advantage of interfacing CrAg results to the laboratory information system, and
8
9 therefore reduce transcription errors. In contrast, the CryptoPS cassette design
10
11 provided a simple method of semi-quantitative CrAg testing without using tubes.
12
13 Results were available within 10 minutes and interpretation was very simple.
14
15

16
17
18 The strengths of this study included a prospective cohort design and enrolment of
19
20 consecutive eligible CrAg-positive individuals. Patients with asymptomatic
21
22 antigenaemia were enrolled after excluding those with clear symptoms and signs of
23
24 CM and a relatively large proportion of patients (25%) had a baseline lumbar
25
26 puncture. The main limitation was a relatively small sample size. In addition, at the
27
28 time that the cohort study was conducted, the South African guideline recommended
29
30 that lumbar puncture should be considered for patients with cryptococcal
31
32 antigenaemia if this procedure was available. Ten of 60 CrAg-positive patients (17%)
33
34 did not have a lumbar puncture. When we compared age, sex, CD4 count and
35
36 proportion with a mild, non-persistent headache among those who had a lumbar
37
38 puncture versus those who did not, we found no differences. We also tested stored
39
40 rather than fresh plasma. To determine if freezing and thawing of plasma had an
41
42 effect on SQ scores, fresh plasma samples that were tested using the SQ assay
43
44 were stored in a -70°C freezer for >6 months. The samples were re-tested after 6
45
46 months and fresh and frozen-thawed plasma SQ results were compared. There was
47
48 excellent result concordance between fresh plasma SQ scores and frozen-thawed
49
50 SQ scores (unpublished data, NICD).
51
52
53
54
55

56 57 58 **Conclusions** 59 60

Semi-quantitative CrAg assays and subclinical cryptococcal meningitis

1
2
3 We found that two semi-quantitative assays offered a simple rapid means of
4
5 estimating plasma CrAg concentrations. While not a substitute for lumbar puncture,
6
7 using these semi-quantitative assays for risk stratification could be applied to
8
9 patients with antigenaemia for whom lumbar puncture is not immediately available,
10
11 those who decline a lumbar puncture, even after careful counselling and those in
12
13 whom lumbar puncture is contraindicated. The association between the semi-
14
15 quantitative assay results and mortality was not clear in our study. These assays
16
17 should not be implemented in routine screening programmes until more prospective
18
19 data have accumulated from diagnostic intervention studies.
20
21
22
23
24
25
26
27
28
29
30
31
32
33
34
35
36
37
38
39
40
41
42
43
44
45
46
47
48
49
50
51
52
53
54
55
56
57
58
59
60

Semi-quantitative CrAg assays and subclinical cryptococcal meningitis

Conflicts of interest: Nil

Author contributions:

- Conceptualisation: R.W., N.P.G., N.P.B.
- Laboratory testing: N.P.B., I.R.
- Student supervision: N.P.G., Y.P.
- Data analysis and interpretation: N.P.B., R.W., N.P.G.
- Drafting and revising manuscript: N.P.B., N.P.G.
- Manuscript review: All authors

Funding: R.W received support from the National Institute for Health Research (ACF-2015-16-003); the St George's Hospital Research Charity; Sir Ratanji Dalal Research Scholarship and the Meningitis Research Foundation (1604.0). N.P.B., I.R. and N.P.G. were partly supported by the National Institute of Allergy and Infectious Diseases of the National Institutes of Health under Award Number R01AI118511. The content is solely the responsibility of the authors and does not necessarily represent the official views of the National Institutes of Health.

Acknowledgements: Immy and Biosynex for providing CrAg assays for research purposes. Data collection for the original cohort study was by: Mr Neo Legare, Sr Matshediso Mkhwenezi and Mr Siphwe Kutta. The authors thank Dr S. Hector for his expert advice and input throughout this project and Ms Nqobile Ngoma for assistance with data cleaning and analysis.

Semi-quantitative CrAg assays and subclinical cryptococcal meningitis

References

1. Rajasingham R, Smith RM, Park BJ, Jarvis JN, Govender NP, Chiller TM, et al. Global burden of disease of HIV-associated cryptococcal meningitis: An updated analysis. *Lancet Infectious Diseases*. 2017; 17(8):873-81.
2. Boulware DR, Rolfes MA, Rajasingham R, von Hohenberg M, Qin Z, Taseera K, et al. Multisite validation of cryptococcal antigen lateral flow assay and quantification by laser thermal contrast. *Emerging Infectious Diseases*. 2014; 20(1):45-53.
3. Rajasingham R, Wake RM, Beyene T, Katende A, Letang E, Boulware DR. Cryptococcal meningitis diagnostics and screening in the era of point-of-care laboratory testing. *Journal of Clinical Microbiology*. 2019; 57(1):e01238-18.
4. Govender NP, Glencross DK. National coverage of reflex cryptococcal antigen screening: A milestone achievement in the care of persons with advanced HIV disease. *South African Medical Journal*. 2018; 108(7):534-5.
5. Longley N, Jarvis JN, Meintjes G, Boule A, Cross A, Kelly N, et al. Cryptococcal antigen screening in patients initiating ART in South Africa: A prospective cohort study. *Clinical Infectious Diseases*. 2016; 62(5):581-7.
6. Govender NP, Meintjes G, Mangena P, Nel J, Potgieter S, Reddy D, et al. Southern African HIV Clinicians Society guideline for the prevention, diagnosis and management of cryptococcal disease among HIV-infected persons: 2019 update. *Southern African Journal of HIV Medicine*. 2019; 20(1):1-16.
7. World Health Organization. Guidelines for the diagnosis, prevention, and management of cryptococcal disease in HIV-infected adults, adolescents and children, March 2018: Supplement to the 2016 consolidated guidelines of the

Semi-quantitative CrAg assays and subclinical cryptococcal meningitis

1
2
3 use of antiretroviral drugs for treating and preventing hiv infection. Available
4
5 at: <https://www.who.int/hiv/pub/guidelines/cryptococcal-disease/en/> (Accessed
6
7 28 May 2021)
8
9

- 10 8. Mfinanga S, Chanda D, Kivuyo SL, Guinness L, Bottomley C, Simms V, et al.
11
12 Cryptococcal meningitis screening and community-based early adherence
13
14 support in people with advanced HIV infection starting antiretroviral therapy in
15
16 Tanzania and Zambia: An open-label, randomised controlled trial. *The Lancet*.
17
18 2015; 385(9983):2173-82.
19
20
- 21 9. Wake RM, Govender NP, Omar T, Nel C, Mazanderani AH, Karat AS, et al.
22
23 Cryptococcal-related mortality despite fluconazole preemptive treatment in a
24
25 cryptococcal antigen screen-and-treat program. *Clinical Infectious Diseases*.
26
27 2020; 70(8):1683-90.
28
29
- 30 10. Single Dose Liposomal Amphotericin for Asymptomatic Cryptococcal
31
32 Antigenemia (ACACIA). Available at:
33
34 <https://clinicaltrials.gov/ct2/show/NCT03945448> (Accessed 28 May 2021)
35
36
37
- 38 11. Treatment of cryptococcal antigen-positive patients identified through
39
40 screening using fluconazole plus flucytosine vs fluconazole alone. Available
41
42 at: <https://doi.org/10.1186/ISRCTN30579828> (Accessed 28 May 2021)
43
44
- 45 12. Thakur KT, Mateyo K, Hachaambwa L, Kayamba V, Mallewa M, Mallewa J, et
46
47 al. Lumbar puncture refusal in sub-Saharan Africa: A call for further
48
49 understanding and intervention. *Neurology*. 2015; 84(19):1988-90.
50
51
- 52 13. Wake RM, Britz E, Sriruttan C, Rukasha I, Omar T, Spencer DC, et al. High
53
54 cryptococcal antigen titers in blood are predictive of subclinical cryptococcal
55
56 meningitis among human immunodeficiency virus-infected patients. *Clinical*
57
58 *Infectious Diseases*. 2018; 66(5):686-92.
59
60

Semi-quantitative CrAg assays and subclinical cryptococcal meningitis

- 1
2
3 14. Jarvis JN, Tenforde MW, Lechiile K, Milton T, Boose A, Leeme TB, et al.
4
5 Evaluation of a novel semi-quantitative cryptococcal antigen lateral flow assay
6
7 in patients with advanced HIV disease. *Journal of Clinical Microbiology*. 2020;
8
9 58(9):e00441-20.
10
11
12 15. Skipper C, Tadeo K, Martyn E, Nalintya E, Rajasingham R, Meya DB, et al.
13
14 Evaluation of serum cryptococcal antigen testing using two novel
15
16 semiquantitative lateral flow assays in persons with cryptococcal antigenemia.
17
18 *Journal of clinical microbiology*. 2020; 58(4):e02046-19.
19
20
21 16. Tenforde MW, Boyer-Chammard T, Muthoga C, Tawe L, Milton T,
22
23 Rulaganyang I, et al. Diagnostic accuracy of the Biosynex CryptoPS
24
25 cryptococcal antigen semi-quantitative lateral flow assay in patients with
26
27 advanced HIV disease. *Journal of Clinical Microbiology*. 2020; 59(1):e02307-
28
29 20.
30
31
32
33
34
35
36
37
38
39
40
41
42
43
44
45
46
47
48
49
50
51
52
53
54
55
56
57
58
59
60

Semi-quantitative CrAg assays and subclinical cryptococcal meningitis

Table 1: Sensitivity and specificity of the SQ and CryptoPS assays for detection of CrAg in frozen-thawed plasma from HIV-seropositive patients with a CD4 count of <100 cells/ μ L compared to a reference lateral flow assay

Statistic	SQ assay		CryptoPS assay	
		95% CI		95% CI
Sensitivity (%)	98.33	91.06- 99.99	90	79.49-96.24
Specificity (%)	100	97.28-100	94.1	89.5-97.9
Positive likelihood ratio	>100		15.19	7.71-29.90
Negative likelihood ratio	0.02	0.00-0.12	0.11	0.05-0.23

Note: Cryptococcal antigen (CrAg) enzyme immune-assay (EIA) results for the 194 participants were positive for 58 and negative for 136. Compared to the EIA, the sensitivity and specificity of the semi-quantitative (SQ) qualitative results were 100% (58/58) and 99% (135/136) whilst Crypto PS had 91.4% (53/58) sensitivity and 93.4% (127/136) specificity.

Semi-quantitative CrAg assays and subclinical cryptococcal meningitis

Table 2: Association between SQ assay scores, lateral flow assay titres and subclinical cryptococcal meningitis (CM) for 50 patients with antigenaemia and lumbar puncture results

SQ assay score	Samples n=50	CrAg LFA titre ≤160 (n=33)	CrAg LFA titre >160 (n=17)	Subclinical CM (n=10)	No subclinical CM (n=40)
Negative	0	0	0	0	0
1	14 (28 %)	14 (42%)	0	0	14 (35%)
2	8 (16%)	7 (21%)	1 (6%)	0	8 (20%)
3	20 (40%)	12 (37%)	8 (47%)	5 (50%)	15 (37%)
4	8 (16%)	0	8 (47%)	5 (50%)	3 (8%)

Semi-quantitative CrAg assays and subclinical cryptococcal meningitis

Table 3: Sensitivity and specificity of SQ assay score cut-offs from ≥ 1 to ≥ 4 for detecting subclinical cryptococcal meningitis among asymptomatic CrAg-positive patients with lumbar puncture results (n=50)

Cut point	Sensitivity %	Specificity	Positive Likelihood Ratio	Negative Likelihood Ratio
≥ 1	100	0	1.0000	
≥ 2	100	35	1.5385	0.0000
≥ 3	100	55	2.2222	0.0000
≥ 4	50	92.5	6.6667	0.5405
5	0	100		1.0000

Receiver Operating Characteristic area = 0.85 (95% CI 0.75-0.95)

Semi-quantitative CrAg assays and subclinical cryptococcal meningitis

Table 4: Association between CryptoPS, lateral flow assay titres and subclinical CM for 50 patients with antigenaemia and lumbar puncture results.

CryptoPS assay results	Samples (n=50)	CrAg LFA titre ≤160 (n=33)	CrAg LFA titre >160 (n=17)	Subclinical CM (n=10)	No subclinical CM (n=40)
Negative	5 (10%)	5 (15%)	0	0	5 (12%)
Positive	26 (52%)	22 (67%)	4 (24%)	1 (10%)	25 (63%)
Strong positive	19 (38%)	6 (18%)	13 (76%)	9 (90%)	10 (25%)

Semi-quantitative CrAg assays and subclinical cryptococcal meningitis

Figure legends

Figure 1: SQ assay scores compared to lateral flow assay (LFA) log₂ titres from HIV-seropositive patients with a CD4 count of <100 cells/ μ l

Figure 2: A receiver operative characteristic curve for plasma semi-quantitative (SQ) scores and subclinical cryptococcal meningitis among 50 asymptomatic cryptococcal-antigen positive patients.

Figure 3: Kaplan-Meier survival estimates in 58 CrAg-positive patients by plasma SQ assay score category (0: score of ≥ 3 and 1: score of <3)

Figure 4: Kaplan-Meier survival curve in 58 CrAg-positive patients by plasma SQ score category, adjusted for CD4 count (hazards ratio of mortality for SQ score of 2 versus 1: 0.45 (95%CI 0.05-4.07); SQ score of 3 versus 1: 2.04 (95%CI 0.63-6.61); SQ score of 4 versus 1: 1.00 (95%CI 0.28-5.85))

1
2
3 **Association of semi-quantitative cryptococcal antigen results in plasma with**
4 **subclinical cryptococcal meningitis and mortality among patients with**
5 **advanced HIV disease**
6
7
8
9

10
11 Nozuko P. Blasich^{1,2}, Rachel M. Wake^{1,3}, Ivy Rukasha¹, Yvonne Prince², Nelesh P.
12 Govender^{1,4,5}
13
14

- 15
16
17 1. National Institute for Communicable Diseases (Centre for Healthcare-Associated
18 Infections, Antimicrobial Resistance and Mycoses), a Division of the National
19 Health Laboratory Service, Johannesburg, South Africa
20
21
22 2. Department of Biomedical Sciences, Faculty of Health and Wellness, Cape
23 Peninsula University of Technology, Cape Town, South Africa
24
25
26 3. Institute of Infection & Immunity, St George's, University of London, United
27 Kingdom
28
29
30 4. School of Pathology, Faculty of Health Sciences, University of the Witwatersrand,
31 Johannesburg, South Africa
32
33
34 5. Division of Medical Microbiology, Faculty of Health Sciences, University of Cape
35 Town, Cape Town, South Africa
36
37
38
39
40

41
42 Corresponding author and address: Professor Nelesh Govender, National Institute
43 for Communicable Diseases, 1 Modderfontein Road, Sandringham 2131,
44 Johannesburg, South Africa. Email: neleshg@nicd.ac.za. Tel: +27 11 555 0353.
45
46
47
48

49
50 Running head: Semi-quantitative CrAg assays and subclinical cryptococcal
51 meningitis
52
53

54
55 Word count (body): 2562
56
57
58
59
60

1 Semi-quantitative CrAg assays and subclinical cryptococcal meningitis
2

3 Keywords: *Cryptococcus*, cryptococcal antigen, antigenaemia, lateral flow assay,
4 semi-quantitative, subclinical, cryptococcal meningitis
5
6
7
8
9
10
11
12
13
14
15
16
17
18
19
20
21
22
23
24
25
26
27
28
29
30
31
32
33
34
35
36
37
38
39
40
41
42
43
44
45
46
47
48
49
50
51
52
53
54
55
56
57
58
59
60

For Peer Review Only

Semi-quantitative CrAg assays and subclinical cryptococcal meningitis

Abstract

Blood cryptococcal antigen (CrAg) titres >160 are associated with concurrent subclinical cryptococcal meningitis (CM). When lumbar puncture (LP) is not immediately available in a CrAg screening programme, semi-quantitative CrAg assays may provide risk stratification for CM. Two semi-quantitative assays (SQ [Immuno-Mycologics, Norman, OK, USA] and CryptoPS [Biosynex, Strasbourg, France]) were evaluated against a qualitative lateral flow assay (LFA) using 194 plasma samples from a cohort of HIV-seropositive individuals with CD4 counts <100 cells/ μ L. We compared SQ and CryptoPS results to titres for LFA-positive samples. Among patients with LP, we examined the association between semi-quantitative CrAg results and CM. We used a Cox proportional hazards model to determine the association between SQ score and mortality. Of 194 participants, 60 (31%) had positive LFA results, of whom 41 (68%) had a titre of \leq 160 and 19 (32%) a titre >160. Fifty individuals with antigenaemia had an LP; a clinically-useful SQ score that identified all ten cases of subclinical CM was \geq 3 (100% sensitivity, 55% specificity). Patients with an SQ score of 3 or 4 also had a 2.2-fold increased adjusted hazards of 6-month mortality (95% CI, 0.79-6.34; $p=0.13$) versus those with score of <3. Nine of ten patients with subclinical CM had a strong-positive CryptoPS result versus 10/40 without subclinical CM ($p<0.001$). Semi-quantitative assays offered a sensitive though not specific means of gauging the risk of concurrent CM in this patient population.

Lay summary: We evaluated two single-step laboratory tests that can quantify the amount of cryptococcal antigen in plasma of patients with advanced HIV disease and

1 Semi-quantitative CrAg assays and subclinical cryptococcal meningitis

2
3 could thus gauge the risk of concurrent cryptococcal meningitis and subsequent
4 mortality. These tests are not a substitute for a lumbar puncture.
5
6
7
8
9
10
11
12
13
14
15
16
17
18
19
20
21
22
23
24
25
26
27
28
29
30
31
32
33
34
35
36
37
38
39
40
41
42
43
44
45
46
47
48
49
50
51
52
53
54
55
56
57
58
59
60

For Peer Review Only

Semi-quantitative CrAg assays and subclinical cryptococcal meningitis

Introduction

HIV-associated cryptococcal meningitis (CM), caused **commonly** by *Cryptococcus neoformans* **in the vast majority of cases** and **less frequently rarely** by *Cryptococcus gattii*, accounts for an estimated 15% of AIDS-related deaths in sub-Saharan Africa

1. A lateral flow assay (LFA) (Immuno-Mycologics Inc. [IMMY], Norman, OK, USA) can detect cryptococcal antigen (CrAg) in plasma, serum, whole blood and cerebrospinal fluid (CSF) very accurately ²⁻³. Reflex laboratory CrAg screening using this LFA to test remnant blood samples with a CD4+ T-cell count of <100 cells/ μ L has been routinely performed across a national network of CD4 laboratories in South Africa since 2016 ⁴⁻⁵. Patients with cryptococcal antigenaemia are recommended to be routinely investigated for CM since up to 40% may have subclinical CM ⁵. Pre-emptive fluconazole therapy is offered to asymptomatic patients with no microbiological evidence of CM ⁶⁻⁷. Despite pre-emptive fluconazole, CrAg-positive patients have a 2- to 3-fold increased risk of mortality compared to CrAg-negative patients with similar CD4 counts, suggesting that this treatment regimen may be inadequate ⁸⁻⁹. Combination treatment regimens are being compared to fluconazole monotherapy for people with antigenaemia in the ongoing EFFECT and ACACIA clinical trials.¹⁰⁻¹¹ Furthermore, lumbar punctures for all CrAg-positive individuals are not possible in many low-resource settings in sub-Saharan Africa and the rate of refusal among asymptomatic patients is high ^{5,8,12}. In addition, contraindications to lumbar puncture include significant coagulopathy and a suspected space-occupying lesion based on recurrent seizures or focal central nervous system signs. Therefore, an enhanced CrAg-screening strategy involving risk-stratification using antigen quantification needs to be evaluated. A CrAg LFA titre in blood can stratify the risk of subclinical CM prior to lumbar puncture. A blood titre of >160 had 88.2% sensitivity

Semi-quantitative CrAg assays and subclinical cryptococcal meningitis

and 82.1% specificity to predict concurrent subclinical CM in a cohort of CrAg-screened adults with a CD4 count of <100 cells/ μ L¹³. However, measuring CrAg titres using serial dilutions of CrAg-positive blood samples is costly and challenging to implement in high-volume pathology laboratories. Approximately 10 LFA strips were required for serial dilutions and an experienced technician took approximately 20 minutes to obtain a single CrAg titre result (unpublished data, National Institute for Communicable Diseases). Semi-quantitative CrAg assays could provide a simple single-step alternative, assisting clinicians to gauge the probability of subclinical CM among people with antigenaemia prior to lumbar puncture. We evaluated the accuracy of the SQ (Immy) and CryptoPS assays (Biosynex, Strasbourg, France) compared to the currently-used LFA in stored samples from a cohort of CrAg-screened HIV-seropositive patients with a CD4 count of <100 cells/ μ L. We also determined the association of SQ assay results with subclinical CM and mortality.

Materials and methods

A prospective cohort study was conducted at Helen Joseph and Tambo Memorial hospitals in Johannesburg, South Africa from June 2015 through to October 2017^{9,13}. HIV-seropositive adults aged ≥ 18 years with a CD4 count of <100 cells/ μ L and no symptoms or signs of CM, who were identified during routine reflex laboratory CrAg screening, were recruited. For each CrAg-positive participant, two CrAg-negative participants were concurrently enrolled with a similar CD4 count. Lumbar punctures were performed for a subset of asymptomatic CrAg-positive patients to investigate for subclinical CM at enrolment and all participants were followed up for 6 months. CrAg LFA titres were determined using ethylene diamine tetra acetic acid (EDTA)-plasma samples stored at -70°C . Concurrent subclinical CM was defined as

Semi-quantitative CrAg assays and subclinical cryptococcal meningitis

1
2
3 a positive CSF India ink microscopy, CrAg test or culture for *Cryptococcus* at the
4 time of study enrollment, when the patient was attending for the result of their
5 screening CrAg test. The full details of the study methods, participants and
6
7
8 relationship between titres, subclinical CM and mortality have been published
9
10 elsewhere ¹³.

11
12
13
14
15 For this sub-study, we retrieved stored EDTA-plasma samples from 201 study
16 participants and re-tested 194 samples (60 CrAg-positive; 134 CrAg-negative) at an
17 ISO 15189-accredited reference medical laboratory. Seven samples were excluded
18 after they were visually assessed and found not suitable for re-testing due to a high
19 lipid content, insufficient volume or high viscosity. All additional CrAg testing was
20 performed as per the manufacturers' instructions. Trained laboratory personnel
21 (N.P.B. and I.R.) performing the SQ and CryptoPS assays were blinded to
22 previously-recorded LFA qualitative and titre results. All samples were tested once
23 with SQ and CryptoPS assays; repeat testing was later performed if the qualitative
24 result yielded by the semi-quantitative assays was found to be different to those of
25 the LFA. SQ testing was performed by mixing 40 µl of plasma and 1 drop of diluent
26 in a test tube, inserting a test strip into the mixture and reading the results at 10
27 minutes. For SQ-positive specimens, the SQ interpretation card was used as an aid
28 to scoring from 1 to 5 based on the presence or absence of T1 and T2 lines. For the
29 CryptoPS assay, 20 µl of plasma and 3 drops of diluent were added to the sample
30 well of the cassette and results were read after 10 minutes. The presence of a T1
31 line was interpreted as a positive result and both T1 and T2 lines recorded as a
32 strong-positive result. All samples were also tested using a CrAg enzyme
33 immunoassay (EIA) (Immy), for which results were obtained using an absorbance
34 microplate reader at 450nm and 630nm wavelengths, BioTek EL808 (BioTek
35
36
37
38
39
40
41
42
43
44
45
46
47
48
49
50
51
52
53
54
55
56
57
58
59
60

1 Semi-quantitative CrAg assays and subclinical cryptococcal meningitis

2
3 instruments, Inc., Winooski, VT). Samples with optical density (OD) readings of
4
5 ≤ 0.265 were interpreted as negative, and positive if the OD reading was > 0.265 .
6
7

8
9 We calculated the sensitivity and specificity (with 95% confidence intervals [CI]) of
10
11 qualitative results yielded by the SQ and CryptoPS assays compared to those of the
12
13 LFA. We used the LFA as the primary reference method because this assay has
14
15 been validated for use in the national CrAg screening programme. We used EIA
16
17 results to resolve discrepancies. We also calculated diagnostic likelihood odds
18
19 ratios. For LFA-positive samples, we compared SQ scores and CryptoPS results to
20
21 titres. For the sub-set of patients with CSF CrAg results, a receiver operating
22
23 characteristic (ROC) curve was used to assess cut-off SQ scores for detecting
24
25 subclinical CM. A chi-square test was used to assess the association between
26
27 CryptoPS results and subclinical CM. We used a Cox proportional hazards model to
28
29 determine the association between plasma SQ scores and mortality. A high SQ
30
31 score was defined as 3 or 4 and a low score as 1 or 2. We plotted Kaplan-Meier
32
33 survival curves over 6 months of follow-up for the cohort by SQ score category.
34
35
36
37
38

39 Ethics approval was obtained for the cohort study from the University of the
40
41 Witwatersrand and the London School of Hygiene and Tropical Medicine. Additional
42
43 ethics approval was granted by Cape Peninsula University of Technology to use the
44
45 archived plasma samples to evaluate the SQ and CryptoPS assays.
46
47
48

49 **Results**

50
51
52
53 Of the 194 study participants included in this analysis, the routinely-performed
54
55 standard CrAg LFA results were positive for 60 and negative for 134. Of the 60 with
56
57 antigenaemia, 41 (68%) had a titre of ≤ 160 and 19 (32%) a titre > 160 .
58
59
60

Semi-quantitative CrAg assays and subclinical cryptococcal meningitis

The sensitivity and specificity of qualitative results from the SQ assay was 98.3% (59/60 95% CI 91.1- 100) and 100% (134/134 95% CI 95.97-100) compared to the LFA (Table 1). A single LFA-positive/SQ-negative sample had a CrAg titre of 20 and was also EIA-negative. Of 41 participants with a CrAg titre of ≤ 160 , 40 had SQ scores of 1, 2 or 3 and 1 had a negative SQ result. Of the 19 with titres of > 160 , 18 had SQ scores of ≥ 3 and 1 had an SQ score of 2 (Figure 1). Of 60 participants with antigenaemia, 50 had a lumbar puncture performed (Table 2). Of 10 who were diagnosed with subclinical CM, 5 had titres ranging from 1280 to 163840 and an SQ score of 4. The other 5 had titres that ranged from 80 to 327680 with an SQ score of 3. Of the 40 without subclinical CM, 22 (55%) had an SQ score of < 3 and 18 (45%) had a score of ≥ 3 . The area under the ROC curve for the association between SQ score and subclinical CM was 0.85 (95% CI, 0.75-0.95) (Figure 2). A cut-off SQ score of ≥ 3 had 100% sensitivity and 55% specificity (Table 3 and Figure 2). Patients with a plasma SQ score of ≥ 3 also had a hazard ratio for death within 6 months of 2.20 (95%CI, 0.79-6.34; $p=0.13$) compared to those with a low score, after adjusting for CD4 count (Figure 3 and 4).

In contrast, the CryptoPS assay had 90% sensitivity (54/60; 95%CI, 79.49-96.24) and 94.8% specificity (127/134; 95%CI, 88.66-97.41) compared to LFA for qualitative results (Table 1). Thirteen samples had discordant LFA and CryptoPS qualitative results. Of the 6 CryptoPS-negative/LFA-positive samples, 3 had titres of 10, 1 had a titre of 5 and 2 had titres of < 5 . The EIA confirmed 5 of these samples as CrAg positive. The sixth sample was EIA-negative and had a titre of < 5 . Of the 7 CryptoPS-positive/LFA-negative samples, all sample dilutions were LFA-negative and the EIA was negative. Of 41 participants with a positive LFA result and a titre of ≤ 160 , 6 had negative CryptoPS results, 29 had positive results and 6 had strong

Semi-quantitative CrAg assays and subclinical cryptococcal meningitis

positive results. Of the 19 with a positive LFA result and a titre of >160, 15 (78%) had strong positive CryptoPS results; the other 4 had positive CryptoPS results (Table 4). Nine of ten patients with subclinical CM had a strong-positive CryptoPS result versus 10/40 without subclinical CM ($p < 0.001$). Compared to a lumbar puncture diagnosis of subclinical CM, the sensitivity and specificity of a strong-positive CryptoPS result was 90% (9/10; 95% CI, 55.5-99.7) and 75% (30/40; 95% CI, 58.8-87.3) respectively.

Discussion

In this re-evaluation of stored plasma samples from a prospective cohort study, the SQ assay was simple and rapid to perform with identical testing steps to a single-strip qualitative LFA and an equivalent accuracy for CrAg detection in stored plasma. Using a cut-off score of ≥ 3 , the SQ assay detected all cases of subclinical CM but had low specificity. A cut-off score of ≥ 4 reduced the sensitivity of this assay substantially but was much more specific for CM. For the purposes of risk stratification for subclinical CM among patients with antigenaemia, a more sensitive cut-off (i.e. a score of ≥ 3) is preferable and specificity is a far less important consideration, given that lumbar puncture is now universally recommended. Although the CryptoPS assay did not perform well as a qualitative assay compared to the LFA, a strong-positive result was a relatively sensitive screening test for subclinical CM, though this was also not specific.

As previously reported, the SQ assay accurately detected CrAg compared to the LFA¹⁴⁻¹⁵. In our study, only one low-titre sample had a negative SQ result. In contrast, the CryptoPS assay incorrectly classified a higher proportion (5/33; 15%) of low-titre samples as negative and also yielded 7 false-positive results. All 7 participants with false-positive CryptoPS results did not receive antifungal treatment

Semi-quantitative CrAg assays and subclinical cryptococcal meningitis

1
2
3 and none progressed to CM during 6 months of follow-up. In an evaluation of the
4
5 same assay in Botswana, a lower sensitivity (61%) but higher specificity (97%) was
6
7 reported. In this study, 29 patients with false-positive CryptoPS results were followed
8
9 up for 3 months and none developed CM ¹⁶.

10
11
12
13 Since a blood CrAg titre cut-off of >160 had previously been identified as a threshold
14
15 for subclinical CM ^{3,13}, we evaluated the accuracy of the two semi-quantitative
16
17 assays in categorising plasma samples with a titre ≤ 160 and >160 . All samples but
18
19 one with an SQ score of <3 had a titre of <160. All samples with a score of >3 had a
20
21 titre of >160. However, a score of 3 did not clearly distinguish between these two titre
22
23 categories. Although a strong-positive CryptoPS result identified 76% of samples
24
25 with a CrAg titre of >160, 18% of samples with a titre of ≤ 160 also had strong-
26
27 positive results. In their evaluation, Tenforde et al also reported a single LFA-
28
29 positive results. In their evaluation, Tenforde et al also reported a single LFA-
30
31 negative plasma sample with a strong-positive CryptoPS result.¹⁶

32
33
34
35 We went on to investigate the relationship between plasma semi-quantitative assay
36
37 results and subclinical CM. Semi-quantitative CrAg assays performed on blood are
38
39 not a substitute for lumbar puncture which is universally recommended for all
40
41 patients with a new diagnosis of antigenaemia. However, such assays could be used
42
43 to refine the pre-test probability of subclinical meningitis, especially at the primary
44
45 healthcare level where patients need to be referred to hospital for a lumbar puncture
46
47 or in settings where a high proportion of patients decline lumbar puncture. A score of
48
49 ≥ 4 was highly specific for concurrent CM, though half of the cases in our study were
50
51 missed at this threshold. A lower threshold (score ≥ 3) included all cases of CM and
52
53 would thus be a more clinically useful risk prediction cut-off, despite also including
54
55 18/40 (45%) of cases without subclinical CM. Based on a sample of 189 screened
56
57
58
59
60

1 Semi-quantitative CrAg assays and subclinical cryptococcal meningitis

2
3 patients, approximately one third of whom had lumbar punctures, the
4
5 aforementioned Botswana study reported a strong association between plasma SQ
6
7 score and central nervous system involvement at baseline (a composite endpoint of
8
9 microbiologically-confirmed CM and/or clinical signs of meningitis).¹⁴ Individuals with
10
11 SQ scores of 2 or 3 were classified as being at moderate risk of central nervous
12
13 system involvement and mortality, with a preliminary recommendation for more
14
15 intensive evaluation including lumbar puncture. In our study, a strong-positive
16
17 CryptoPS result was relatively sensitive and picked up 9 of 10 cases of subclinical
18
19 CM but also 10/40 (25%) of those without CM. The lack of a clearer association
20
21 between the semi-quantitative CrAg results and subclinical CM in our study might be
22
23 explained by a smaller sample size since we restricted our analysis to patients who
24
25 had a lumbar puncture. We found that CrAg-positive patients with an SQ score of ≥ 3
26
27 had a more than two-fold increase in mortality though the 95% CI spanned 1. In
28
29 contrast to Jarvis et al, we did not find that the hazards of death increased with each
30
31 step-wise increase in SQ score. Again, this may be related to a smaller sample size.
32
33 Compared to testing serial sample dilutions to obtain LFA titres, the SQ assay was a
34
35 much less laborious method of obtaining a semi-quantitative CrAg result using a
36
37 single test strip. SQ testing was easy to perform but reading the SQ test strip was
38
39 more complex and the result interpretation card was needed to obtain an SQ score.
40
41 For instance, for a CrAg-negative result, only a control line is positive with the LFA,
42
43 whereas with the SQ assay, both the control and the T2 lines are positive. Moreover,
44
45 grading of scores 1, 2 and 3 is determined by comparing the intensity of the T1 and
46
47 T2 bands. Through an inter-laboratory comparison, we have identified reading and
48
49 interpretation errors for the LFA in the national CrAg screening programme and
50
51 expect that the complexity of reading the SQ test strips would increase the
52
53
54
55
56
57
58
59
60

Semi-quantitative CrAg assays and subclinical cryptococcal meningitis

1
2
3 proportion of erroneous readings. Using automated readers to read the SQ test
4
5 strips could be considered to prevent such errors. Automated readers may also offer
6
7 an advantage of interfacing CrAg results to the laboratory information system, and
8
9 therefore reduce transcription errors. In contrast, the CryptoPS cassette design
10
11 provided a simple method of semi-quantitative CrAg testing without using tubes.
12
13
14 Results were available within 10 minutes and interpretation was very simple.
15
16

17
18 The strengths of this study included a prospective cohort design and enrolment of
19
20 consecutive eligible CrAg-positive individuals. Patients with asymptomatic
21
22 antigenaemia were enrolled after excluding those with clear symptoms and signs of
23
24 CM and a relatively large proportion of patients (25%) had a baseline lumbar
25
26 puncture. The main limitation was a relatively small sample size. In addition, at the
27
28 time that the cohort study was conducted, the South African guideline recommended
29
30 that lumbar puncture should be considered for patients with cryptococcal
31
32 antigenaemia if this procedure was available. Ten of 60 CrAg-positive patients (17%)
33
34 did not have a lumbar puncture. When we compared age, sex, CD4 count and
35
36 proportion with a mild, non-persistent headache among those who had a lumbar
37
38 puncture versus those who did not, we found no differences. We also tested stored
39
40 rather than fresh plasma. To determine if freezing and thawing of plasma had an
41
42 effect on SQ scores, fresh plasma samples that were tested using the SQ assay
43
44 were stored in a -70°C freezer for >6 months. The samples were re-tested after 6
45
46 months and fresh and frozen-thawed plasma SQ results were compared. There was
47
48 excellent result concordance between fresh plasma SQ scores and frozen-thawed
49
50 SQ scores (unpublished data, NICD).
51
52
53
54
55
56

57 58 **Conclusions** 59 60

Semi-quantitative CrAg assays and subclinical cryptococcal meningitis

1
2
3 We found that two semi-quantitative assays offered a simple rapid means of
4
5 estimating plasma CrAg concentrations. While not a substitute for lumbar puncture,
6
7 using these semi-quantitative assays for risk stratification could be applied to
8
9 patients with antigenaemia for whom lumbar puncture is not immediately available,
10
11 those who decline a lumbar puncture, even after careful counselling and those in
12
13 whom lumbar puncture is contraindicated. The association between the semi-
14
15 quantitative assay results and mortality was not clear in our study. These assays
16
17 should not be implemented in routine screening programmes until more prospective
18
19 data have accumulated from diagnostic intervention studies.
20
21
22
23
24
25
26
27
28
29
30
31
32
33
34
35
36
37
38
39
40
41
42
43
44
45
46
47
48
49
50
51
52
53
54
55
56
57
58
59
60

Semi-quantitative CrAg assays and subclinical cryptococcal meningitis

Conflicts of interest: Nil

Author contributions:

- Conceptualisation: R.W., N.P.G., N.P.B.
- Laboratory testing: N.P.B., I.R.
- Student supervision: N.P.G., Y.P.
- Data analysis and interpretation: N.P.B., R.W., N.P.G.
- Drafting and revising manuscript: N.P.B., N.P.G.
- Manuscript review: All authors

Funding: R.W received support from the National Institute for Health Research (ACF-2015-16-003); the St George's Hospital Research Charity; Sir Ratanji Dalal Research Scholarship and the Meningitis Research Foundation (1604.0). N.P.B., I.R. and N.P.G. were partly supported by the National Institute of Allergy and Infectious Diseases of the National Institutes of Health under Award Number R01AI118511. The content is solely the responsibility of the authors and does not necessarily represent the official views of the National Institutes of Health.

Acknowledgements: Immy and Biosynex for providing CrAg assays for research purposes. Data collection for the original cohort study was by: Mr Neo Legare, Sr Matshediso Mkhwenezi and Mr Siphwe Kutta. The authors thank Dr S. Hector for his expert advice and input throughout this project and Ms Nqobile Ngoma for assistance with data cleaning and analysis.

Semi-quantitative CrAg assays and subclinical cryptococcal meningitis

References

1. Rajasingham R, Smith RM, Park BJ, Jarvis JN, Govender NP, Chiller TM, et al. Global burden of disease of HIV-associated cryptococcal meningitis: An updated analysis. *Lancet Infectious Diseases*. 2017; 17(8):873-81.
2. Boulware DR, Rolfes MA, Rajasingham R, von Hohenberg M, Qin Z, Taseera K, et al. Multisite validation of cryptococcal antigen lateral flow assay and quantification by laser thermal contrast. *Emerging Infectious Diseases*. 2014; 20(1):45-53.
3. Rajasingham R, Wake RM, Beyene T, Katende A, Letang E, Boulware DR. Cryptococcal meningitis diagnostics and screening in the era of point-of-care laboratory testing. *Journal of Clinical Microbiology*. 2019; 57(1):e01238-18.
4. Govender NP, Glencross DK. National coverage of reflex cryptococcal antigen screening: A milestone achievement in the care of persons with advanced HIV disease. *South African Medical Journal*. 2018; 108(7):534-5.
5. Longley N, Jarvis JN, Meintjes G, Boulle A, Cross A, Kelly N, et al. Cryptococcal antigen screening in patients initiating ART in South Africa: A prospective cohort study. *Clinical Infectious Diseases*. 2016; 62(5):581-7.
6. Govender NP, Meintjes G, Mangena P, Nel J, Potgieter S, Reddy D, et al. Southern African HIV Clinicians Society guideline for the prevention, diagnosis and management of cryptococcal disease among HIV-infected persons: 2019 update. *Southern African Journal of HIV Medicine*. 2019; 20(1):1-16.
7. World Health Organization. Guidelines for the diagnosis, prevention, and management of cryptococcal disease in HIV-infected adults, adolescents and children, March 2018: Supplement to the 2016 consolidated guidelines of the

Semi-quantitative CrAg assays and subclinical cryptococcal meningitis

1
2
3 use of antiretroviral drugs for treating and preventing hiv infection. Available
4
5 at: <https://www.who.int/hiv/pub/guidelines/cryptococcal-disease/en/> (Accessed
6
7 28 May 2021)
8
9

- 10 8. Mfinanga S, Chanda D, Kivuyo SL, Guinness L, Bottomley C, Simms V, et al.
11
12 Cryptococcal meningitis screening and community-based early adherence
13
14 support in people with advanced HIV infection starting antiretroviral therapy in
15
16 Tanzania and Zambia: An open-label, randomised controlled trial. *The Lancet*.
17
18 2015; 385(9983):2173-82.
19
20
- 21 9. Wake RM, Govender NP, Omar T, Nel C, Mazanderani AH, Karat AS, et al.
22
23 Cryptococcal-related mortality despite fluconazole preemptive treatment in a
24
25 cryptococcal antigen screen-and-treat program. *Clinical Infectious Diseases*.
26
27 2020; 70(8):1683-90.
28
29
- 30 10. Single Dose Liposomal Amphotericin for Asymptomatic Cryptococcal
31
32 Antigenemia (ACACIA). Available at:
33
34 <https://clinicaltrials.gov/ct2/show/NCT03945448> (Accessed 28 May 2021)
35
36
37
- 38 11. Treatment of cryptococcal antigen-positive patients identified through
39
40 screening using fluconazole plus flucytosine vs fluconazole alone. Available
41
42 at: <https://doi.org/10.1186/ISRCTN30579828> (Accessed 28 May 2021)
43
44
- 45 12. Thakur KT, Mateyo K, Hachaambwa L, Kayamba V, Mallewa M, Mallewa J, et
46
47 al. Lumbar puncture refusal in sub-Saharan Africa: A call for further
48
49 understanding and intervention. *Neurology*. 2015; 84(19):1988-90.
50
51
- 52 13. Wake RM, Britz E, Sriruttan C, Rukasha I, Omar T, Spencer DC, et al. High
53
54 cryptococcal antigen titers in blood are predictive of subclinical cryptococcal
55
56 meningitis among human immunodeficiency virus-infected patients. *Clinical*
57
58 *Infectious Diseases*. 2018; 66(5):686-92.
59
60

Semi-quantitative CrAg assays and subclinical cryptococcal meningitis

- 1
2
3 14. Jarvis JN, Tenforde MW, Lechiile K, Milton T, Boose A, Leeme TB, et al.
4
5 Evaluation of a novel semi-quantitative cryptococcal antigen lateral flow assay
6
7 in patients with advanced HIV disease. *Journal of Clinical Microbiology*. 2020;
8
9 58(9):e00441-20.
10
11
12 15. Skipper C, Tadeo K, Martyn E, Nalintya E, Rajasingham R, Meya DB, et al.
13
14 Evaluation of serum cryptococcal antigen testing using two novel
15
16 semiquantitative lateral flow assays in persons with cryptococcal antigenemia.
17
18 *Journal of clinical microbiology*. 2020; 58(4):e02046-19.
19
20
21 16. Tenforde MW, Boyer-Chammard T, Muthoga C, Tawe L, Milton T,
22
23 Rulaganyang I, et al. Diagnostic accuracy of the Biosynex CryptoPS
24
25 cryptococcal antigen semi-quantitative lateral flow assay in patients with
26
27 advanced HIV disease. *Journal of Clinical Microbiology*. 2020; 59(1):e02307-
28
29 20.
30
31
32
33
34
35
36
37
38
39
40
41
42
43
44
45
46
47
48
49
50
51
52
53
54
55
56
57
58
59
60

Semi-quantitative CrAg assays and subclinical cryptococcal meningitis

Table 1: Sensitivity and specificity of the SQ and CryptoPS assays for detection of CrAg in frozen-thawed plasma from HIV-seropositive patients with a CD4 count of <100 cells/ μ L compared to a reference lateral flow assay

Statistic	SQ assay		CryptoPS assay	
		95% CI		95% CI
Sensitivity (%)	98.33	91.06- 99.99	90	79.49-96.24
Specificity (%)	100	97.28-100	94.1	89.5-97.9
Positive likelihood ratio	>100		15.19	7.71-29.90
Negative likelihood ratio	0.02	0.00-0.12	0.11	0.05-0.23

Note: Cryptococcal antigen (CrAg) enzyme immune-assay (EIA) results for the 194 participants were positive for 58 and negative for 136. Compared to the EIA, the sensitivity and specificity of the semi-quantitative (SQ) qualitative results were 100% (58/58) and 99% (135/136) whilst Crypto PS had 91.4% (53/58) sensitivity and 93.4% (127/136) specificity.

Semi-quantitative CrAg assays and subclinical cryptococcal meningitis

Table 2: Association between SQ assay scores, lateral flow assay titres and subclinical cryptococcal meningitis (CM) for 50 patients with antigenaemia and lumbar puncture results

SQ assay score	Samples n=50	CrAg LFA titre ≤160 (n=33)	CrAg LFA titre >160 (n=17)	Subclinical CM (n=10)	No subclinical CM (n=40)
Negative	0	0	0	0	0
1	14 (28 %)	14 (42%)	0	0	14 (35%)
2	8 (16%)	7 (21%)	1 (6%)	0	8 (20%)
3	20 (40%)	12 (37%)	8 (47%)	5 (50%)	15 (37%)
4	8 (16%)	0	8 (47%)	5 (50%)	3 (8%)

Semi-quantitative CrAg assays and subclinical cryptococcal meningitis

Table 3: Sensitivity and specificity of SQ assay score cut-offs from ≥ 1 to ≥ 4 for detecting subclinical cryptococcal meningitis among asymptomatic CrAg-positive patients with lumbar puncture results (n=50)

Cut point	Sensitivity %	Specificity	Positive Likelihood Ratio	Negative Likelihood Ratio
≥ 1	100	0	1.0000	
≥ 2	100	35	1.5385	0.0000
≥ 3	100	55	2.2222	0.0000
≥ 4	50	92.5	6.6667	0.5405
5	0	100		1.0000

Receiver Operating Characteristic area = 0.85 (95% CI 0.75-0.95)

Semi-quantitative CrAg assays and subclinical cryptococcal meningitis

Table 4: Association between CryptoPS, lateral flow assay titres and subclinical CM for 50 patients with antigenaemia and lumbar puncture results.

CryptoPS assay results	Samples (n=50)	CrAg LFA titre ≤ 160 (n=33)	CrAg LFA titre > 160 (n=17)	Subclinical CM (n=10)	No subclinical CM (n=40)
Negative	5 (10%)	5 (15%)	0	0	5 (12%)
Positive	26 (52%)	22 (67%)	4 (24%)	1 (10%)	25 (63%)
Strong positive	19 (38%)	6 (18%)	13 (76%)	9 (90%)	10 (25%)

Semi-quantitative CrAg assays and subclinical cryptococcal meningitis

Figure legends

Figure 1: SQ assay scores compared to lateral flow assay (LFA) log₂ titres from HIV-seropositive patients with a CD4 count of <100 cells/ μ l

Figure 2: A receiver operative characteristic curve for plasma semi-quantitative (SQ) scores and subclinical cryptococcal meningitis among 50 asymptomatic cryptococcal-antigen positive patients.

Figure 3: Kaplan-Meier survival estimates in 58 CrAg-positive patients by plasma SQ assay score category (0: score of ≥ 3 and 1: score of <3)

Figure 4: Kaplan-Meier survival curve in 58 CrAg-positive patients by plasma SQ score category, adjusted for CD4 count (hazards ratio of mortality for SQ score of 2 versus 1: 0.45 (95%CI 0.05-4.07); SQ score of 3 versus 1: 2.04 (95%CI 0.63-6.61); SQ score of 4 versus 1: 1.00 (95%CI 0.28-5.85))

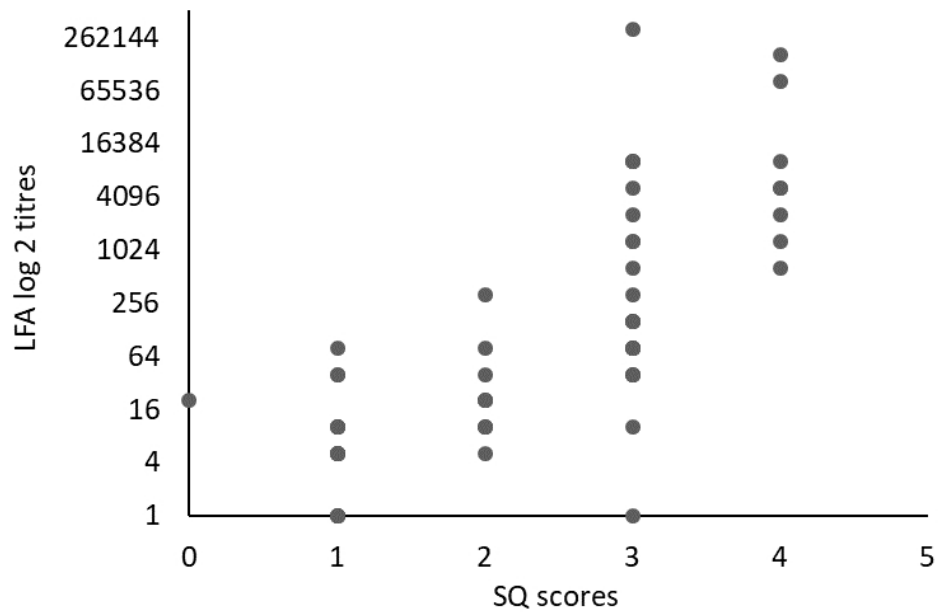


Figure 1: SQ assay scores compared to lateral flow assay (LFA) log₂ titres from HIV-seropositive patients with a CD4 count of <100 cells/ μ l

66x44mm (300 x 300 DPI)

1
2
3
4
5
6
7
8
9
10
11
12
13
14
15
16
17
18
19
20
21
22
23
24
25
26
27
28
29
30
31
32
33
34
35
36
37
38
39
40
41
42
43
44
45
46
47
48
49
50
51
52
53
54
55
56
57
58
59
60

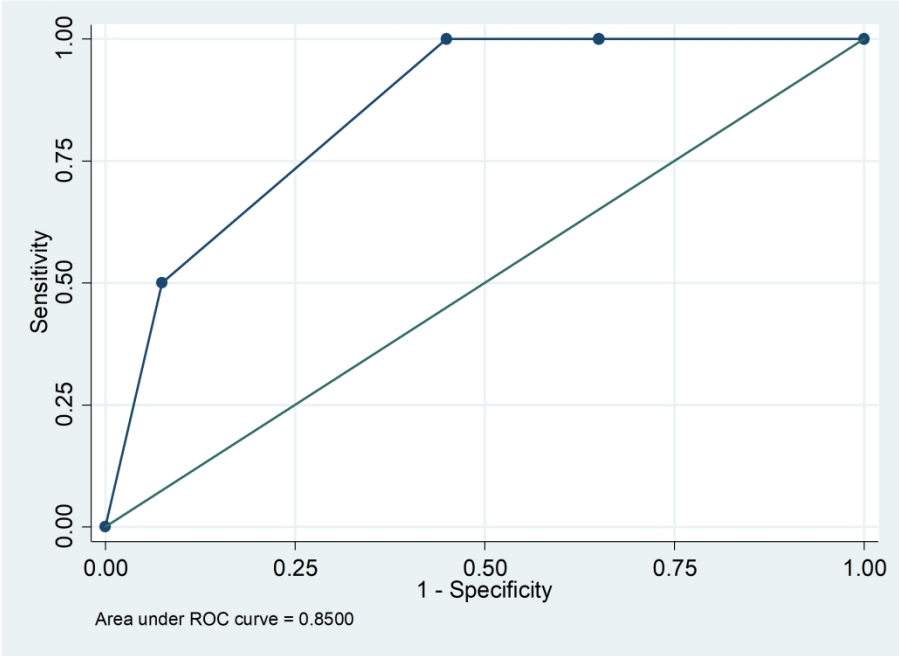


Figure 2: A receiver operative characteristic curve for plasma semi-quantitative (SQ) scores and subclinical cryptococcal meningitis among 50 asymptomatic cryptococcal-antigen positive patients

254x190mm (300 x 300 DPI)

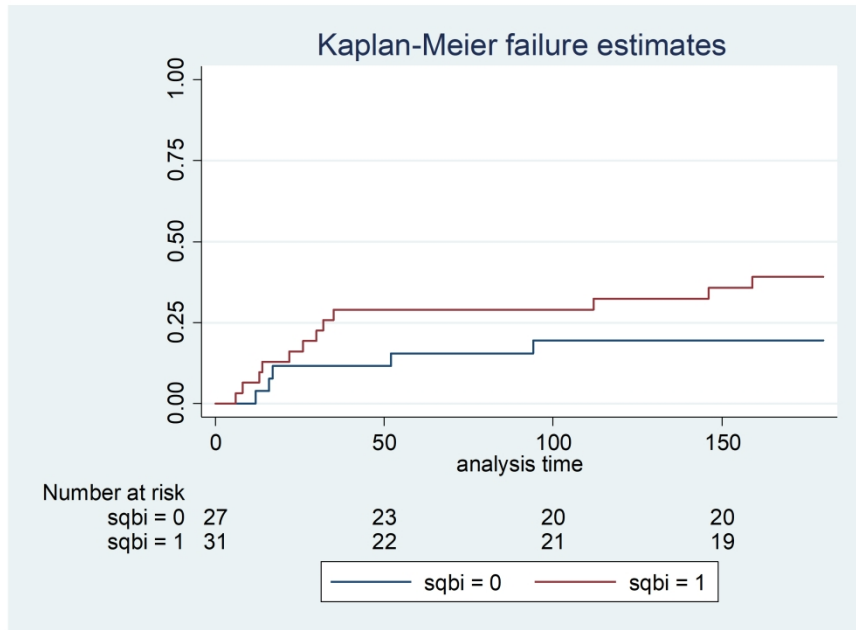


Figure 3: Kaplan-Meier survival estimates in 58 CrAg-positive patients by plasma SQ assay score category (0: score of ≥ 3 and 1: score of < 3)

254x190mm (300 x 300 DPI)

1
2
3
4
5
6
7
8
9
10
11
12
13
14
15
16
17
18
19
20
21
22
23
24
25
26
27
28
29
30
31
32
33
34
35
36
37
38
39
40
41
42
43
44
45
46
47
48
49
50
51
52
53
54
55
56
57
58
59
60

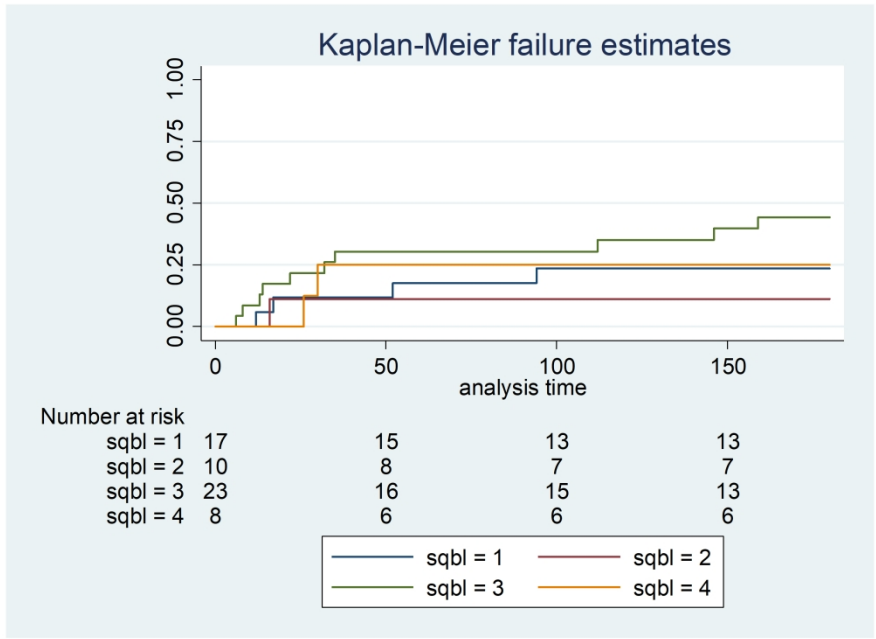


Figure 4: Kaplan-Meier survival curve in 58 CrAg-positive patients by plasma SQ score category, adjusted for CD4 count (hazards ratio of mortality for SQ score of 2 versus 1: 0.45 (95%CI 0.05-4.07); SQ score of 3 versus 1: 2.04 (95%CI 0.63-6.61); SQ score of 4 versus 1: 1.00 (95%CI 0.28-5.85))

254x190mm (300 x 300 DPI)