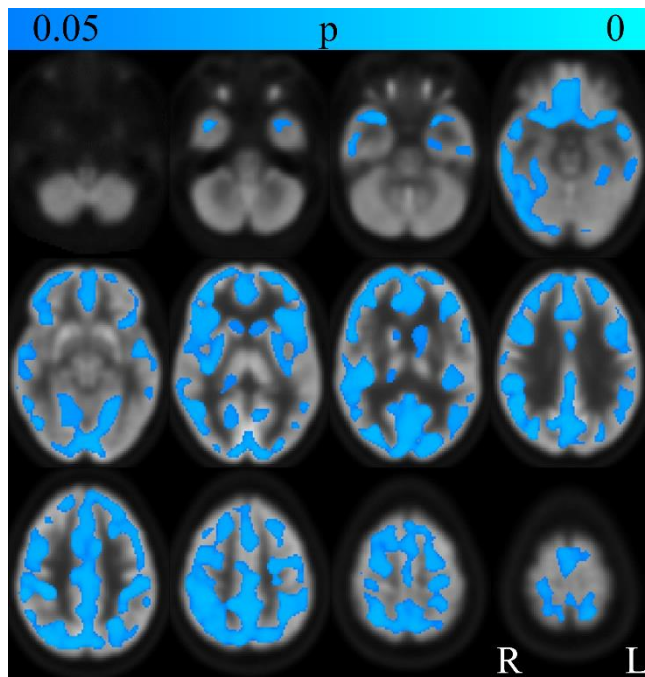
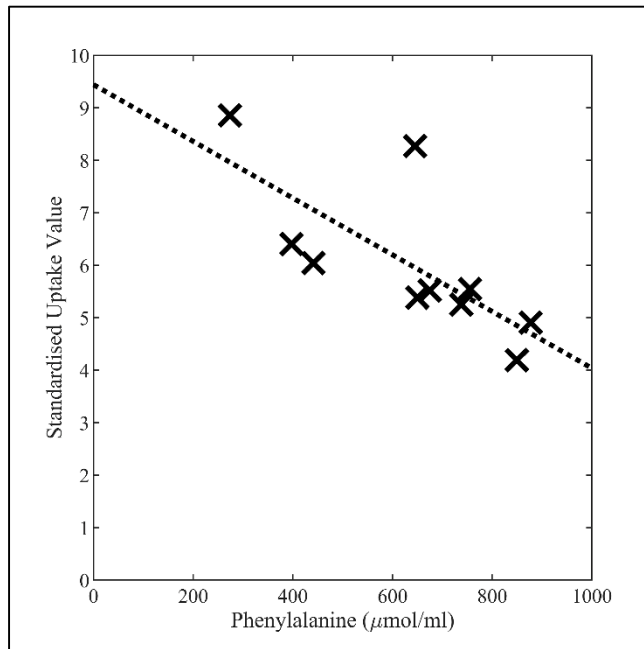


Supplementary

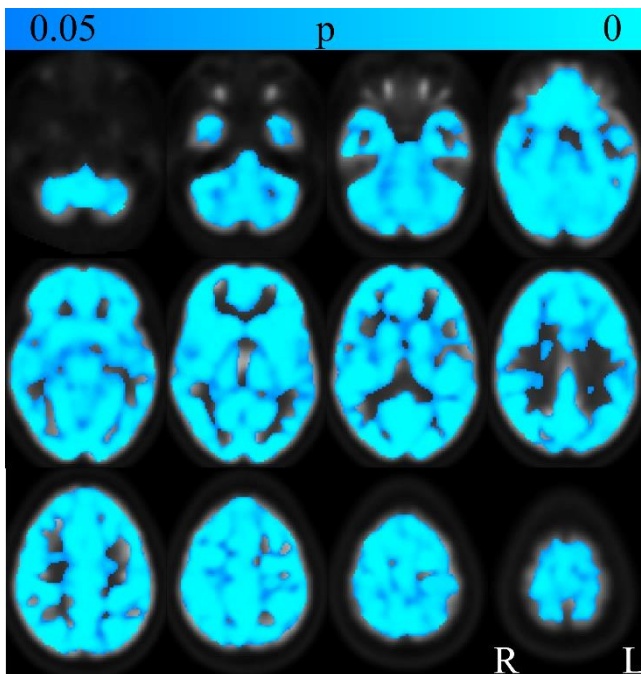
1 Supplementary Figures



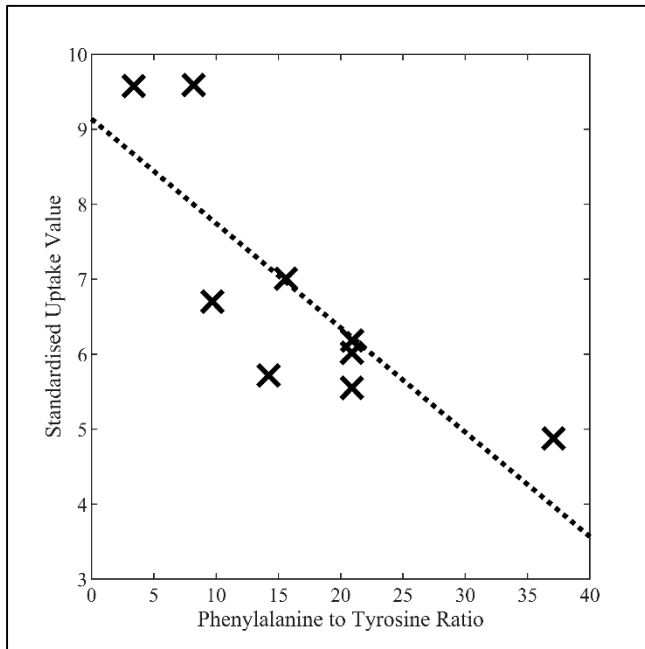
Supplementary Figure 1. Clusters of negative correlation between SUV and Phe, displayed on the SUV template image. L – left; R – right.



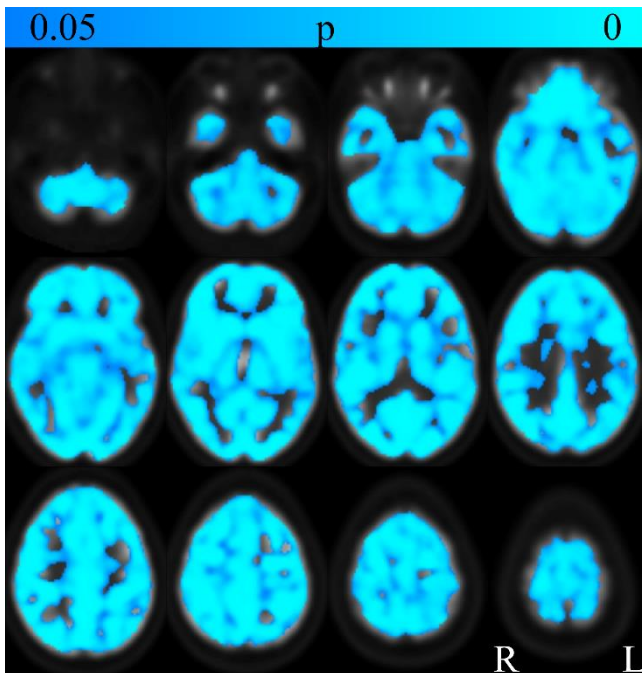
Supplementary Figure 2. Negative correlation between SUV and Phe. The SUVs depicted in the graph represent the median within a sphere of 8 millimeter radius centered on the peak voxel (Spearman's rank $\rho = -0.87$, $p = 0.003$).



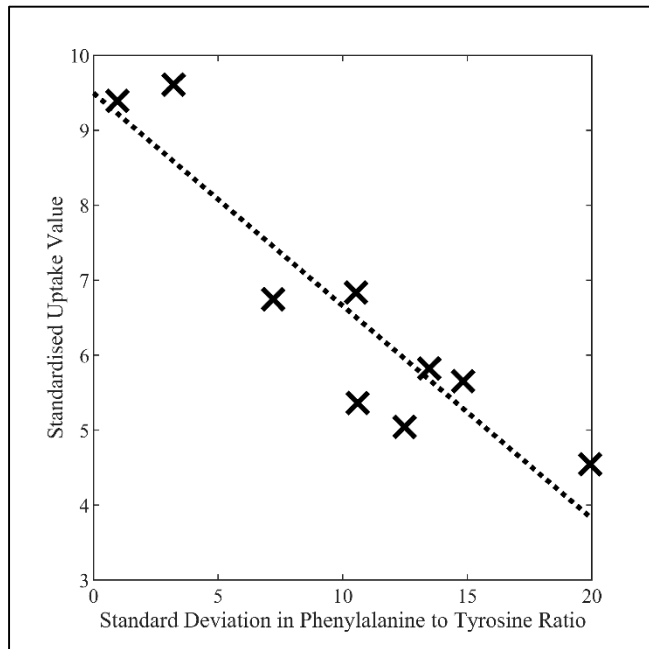
Supplementary Figure 3. Clusters of negative correlation between SUV and Phe:Tyr, displayed on the SUV template image. L – left; R – right.



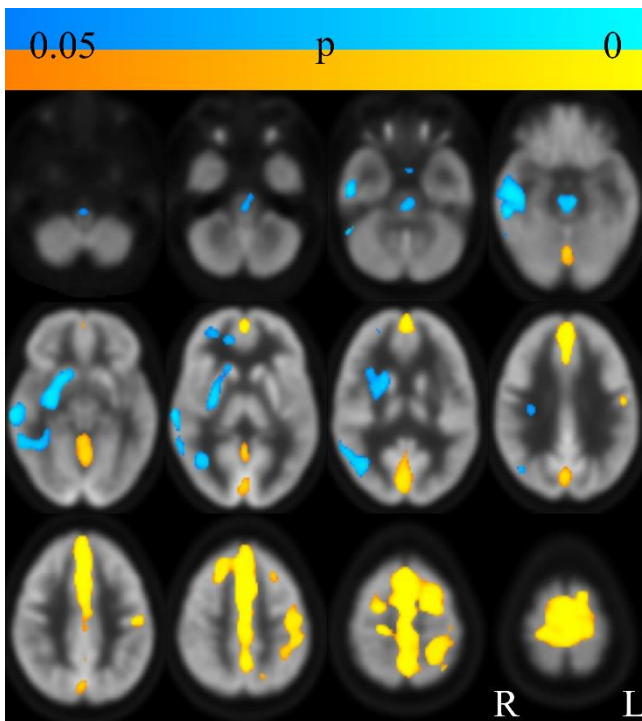
Supplementary Figure 4. Negative correlation between SUV and Phe:Tyr. The SUVs depicted in the graph represent the median within a sphere of 8 millimeter radius centered on the peak voxel (Spearman's rank $\rho = -0.75$, $p = 0.026$).



Supplementary Figure 5. Clusters of negative correlation between SUV and SD-Phe:Tyr, displayed on the SUV template image. L – left; R – right.



Supplementary Figure 6. Negative correlation between SUV and SD-Phe:Tyr. The SUVs depicted in the graph represent the median within a sphere of 8 millimeter radius centered on the peak voxel (Spearman's rank $\rho = -0.83$, $p = 0.008$).



Supplementary Figure 7. Clusters of significantly lower (blue) and higher (yellow) [^{18}F]FDG uptake, relative to healthy controls. L – left; R – right.