

False-positive troponin elevation due to an immunoglobulin-G-cardiac troponin T complex: a case report

Zaki Akhtar ^{1,*}, James Dargan¹, David Gaze ^{1,2}, Sami Firoozi¹, Paul Collinson ¹, and Nesan Shanmugam ¹

¹Department of Cardiology, St George's University Hospital, Blackshaw Road, London SW17 0QT, UK; and ²School of Life Sciences, University of Westminster, Cavendish Street, London W1W 6UW, UK

Received 12 November 2019; first decision 12 December 2019; accepted 17 March 2020; online publish-ahead-of-print 3 May 2020

Background

Troponin is a crucial biomarker for the diagnosis of an acute coronary syndrome (ACS). It rises in response to myocardial injury from significant acute myocardial ischaemia caused by obstructive coronary artery disease ['classical' myocardial infarction (MI)]. However, raised levels have also been noted in conditions not recognized as classical ACS. This may include MI with non-obstructed coronary arteries such as takotsubo cardiomyopathy and other acute or chronic conditions such as pulmonary embolus or chronic kidney disease. This is commonly labelled as a 'falsely elevated' troponin although there is some myocardial strain to explain the rise, such as an increase in cardiac oxygen demand. True 'falsely elevated' troponin, characterized by a persistent elevation in the absence of cardiac injury does occur and thought to be secondary to an immunoglobulin-troponin complex (macro-troponin).

Case summary

A 53-year-old gentleman with a background of diabetes, hypertension, hypercholesterolaemia, and hepatitis B was admitted with chest pain and persistently elevated cardiac troponin T (cTnT) levels. Investigations revealed unobstructed coronary arteries and a structurally normal, well-functioning heart. Subsequent biochemical analysis found the persistently elevated cTnT secondary to macro-troponin T.

Discussion

Macro-troponin, an immunoglobulin-troponin bound complex should be considered as a differential diagnosis when the biochemistry is not reflective of the clinical picture. Early recognition requires effective collaboration with the biochemistry laboratory for accurate diagnosis.

Keywords

Case report • Macro-troponin • Falsely elevated troponin • Biochemistry

Learning points

- A thorough review of the case is indicated when the biochemistry does not reflect the clinical picture.
- Close collaboration between the clinicians and the clinical biochemistry laboratory is vital in establishing an early diagnosis of a falsely elevated troponin level.
- Falsely elevated troponin levels due to an immunoglobulin-G-cardiac complex should be a differential diagnosis when the troponin levels do not reflect the clinical picture.

*Corresponding author. Tel: 0208 672 1255, Email: zakiakhtar@doctors.org.uk

Handling Editor: Aref Bin Abdulhak

Peer-reviewers: Arvind Singh and Mohamed Farag

Compliance Editor: Carlos Minguito Carazo

Supplementary Material Editor: Ross Thomson

© The Author(s) 2020. Published by Oxford University Press on behalf of the European Society of Cardiology.

This is an Open Access article distributed under the terms of the Creative Commons Attribution Non-Commercial License (<http://creativecommons.org/licenses/by-nc/4.0/>), which permits non-commercial re-use, distribution, and reproduction in any medium, provided the original work is properly cited. For commercial re-use, please contact journals.permissions@oup.com

Introduction

The measurement of cardiac troponin as cardiac troponin T (cTnT) or cardiac troponin I (cTnI) is integral to the diagnosis of acute myocardial infarction (AMI) and is included as the cornerstone of the universal definition of AMI.¹ Elevation of cardiac troponin also occurs in a large number of clinical conditions associated with acute or chronic myocardial injury but which are not classical AMI.^{1,2} These may include myocardial infarction (MI) with non-obstructed coronary arteries such as coronary vasospasm, pulmonary embolus, sepsis, and chronic causes such as chronic kidney disease or structural heart disease.^{1,2} Although these are often referred to as 'false positive', this is not in fact the case as there is underlying myocardial injury.¹ However, a true 'false positive' troponin rise does occur which is characterized by a persistent elevation in the absence of myocardial injury and needs to be recognized by clinicians.

Timeline

Day 0	Admission to cardiology with assumed ACS diagnosis [after computed tomography (CT) aortogram]	Troponin T 1588 (ng/L)
Day 1	Echocardiogram demonstrated well-functioning heart with no regional wall motion abnormalities	Troponin T 1842 (ng/L)
Day 2	Coronary angiogram reveals unobstructed coronary arteries	Troponin T 1690 (ng/L)
Day 4	Cardiac MRI performed revealing a structurally normal heart and no evidence of scar	Troponin T 1789 (ng/L)
Day 5	Biochemistry lab contacted to elucidate cause of persistently elevated troponin	Troponin T 1684 (ng/L)
Day 8	Troponin I found to be normal and macrotroponin complex confirmed	Troponin T 1697 (ng/L)

Case presentation

A 53-year-old south Asian male presented to the accident and emergency department with an extended history of chest pain and numbness in the left arm lasting more than 24 hours. His symptoms had initiated whilst driving but resolved on arrival to hospital. There were

no abnormal findings on clinical examination (heart rate 65 b.p.m., blood pressure 108/76 mmHg, saturations 98% on air, respiratory rate 16 cycles per minute).

His medical background included type 2 diabetes (2013), hypertension (2014), hypercholesterolaemia (2002), non-alcoholic steatohepatitis (2002), and hepatitis B (2002). The patient had two prior admissions with cTnT positive chest pain, in 2002 (1410 ng/L) and 2015 (1540 ng/L), during which coronary angiography demonstrated unobstructed coronary anatomy and a diagnosis of probable myocarditis was given on each occasion.

An electrocardiogram (ECG) on admission demonstrated no ischaemic changes (Figure 1). However, an initial cTnT was raised at 1588 ng/L (normal range <15 ng/L) and 1842 ng/L when repeated. This was in the context of a normal renal function [creatinine 102 (normal 62–106 µmol/L)] and a normal haemoglobin (137 g/L). Subsequent serial troponins did not drop below 1600 ng/L (timeline). Due to this stagnation, a creatine kinase level was measured and found to be only borderline raised at 338 U/L (normal 40–320 U/L). An echocardiogram was also performed which showed no regional wall motion abnormalities and a preserved left ventricular ejection fraction of 60–65%.

Owing to the patient's clinical picture, a CT aortogram was performed which excluded an aortic dissection and within its limits, a pulmonary embolus. Thus, a working diagnosis of acute coronary syndrome was suggested and he underwent a coronary angiogram. This showed only mild disease in the right coronary artery (Supplementary material online, Video S1) and left anterior descending (Supplementary material online, Video S2) whilst the left main stem and circumflex vessels (Supplementary material online, Video S3) were unobstructed. Subsequently a cardiac MRI with gadolinium was performed which was unremarkable and confirmed preserved bi-ventricular function (Supplementary material online, Videos S4 and S5) with no evidence of a scar, fibrosis, or oedema (Supplementary material online, Video S6). Acute myocardial injury was therefore considered unlikely. Furthermore, he remained on telemetry and despite 7 days of cardiac monitoring, no arrhythmia was documented. After extensive investigations had excluded myocardial damage and any other clinical condition as a likely cause of the troponin elevation, the biochemistry laboratory was contacted for assistance in elucidating the cause of the persistently elevated cTnT.

Initially, a measurement of cTnI was performed (Abbott diagnostics hs cTnI, LOD 2 ng/L 10% CV = 4.7 ng/L, 99th percentile URL = 26.2 ng/L) on the cTnT sample value 1674 ng/L, and was <2 ng/L, therefore excluding myocardial injury. Analytical interference causing a false-positive cTnT result was then suspected.

Serial dilution of the sample using troponin free diluent was linear (Figure 2) (recovery sample 73.1–94.7%, control 81.5–109.2%) although recovery at a one in 10 dilution was <100% compared with the control. This suggested that an analytical interference from an interfering antibody (anti-mouse) was unlikely. The Roche cTnT assay uses fragment antigen binding portions of 2 cTnT-specific mouse monoclonal antibodies (MAbs) directed against epitopes in the central region of human cTnT.

One control (Randox IA3, Randox, County Antrim), two control patients (cTnT 2091 and 1637 ng/L) and two patient samples (cTnT 1745 and 1697 ng/L) were diluted one in two with troponin free

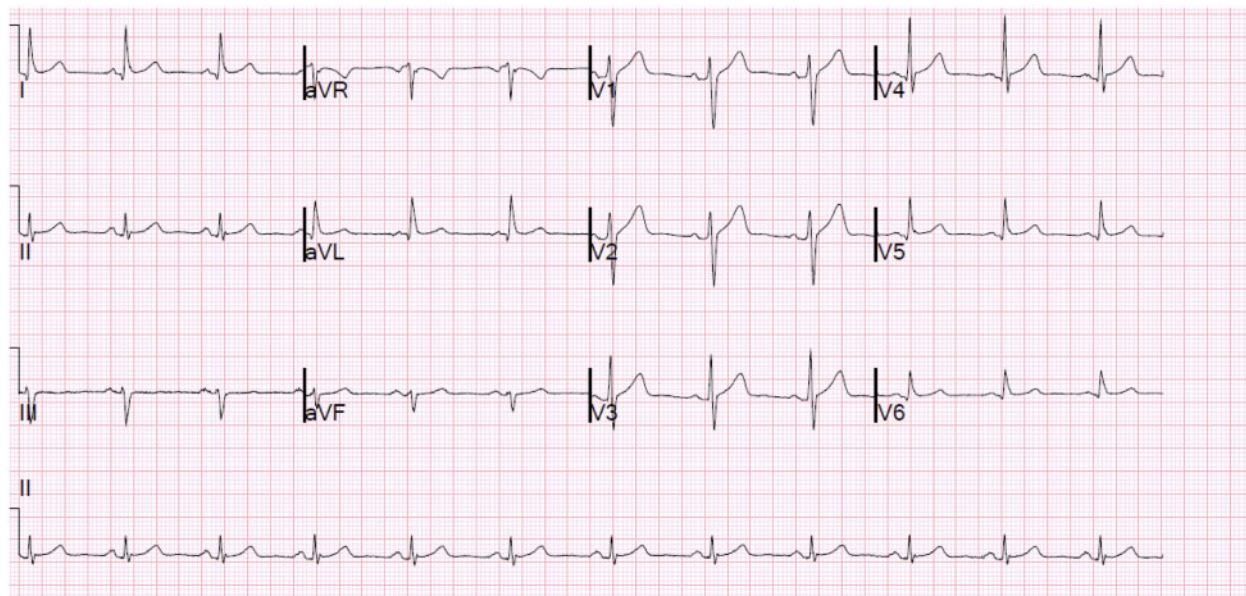


Figure 1 Electrocardiogram on admission demonstrating no ischaemic changes.

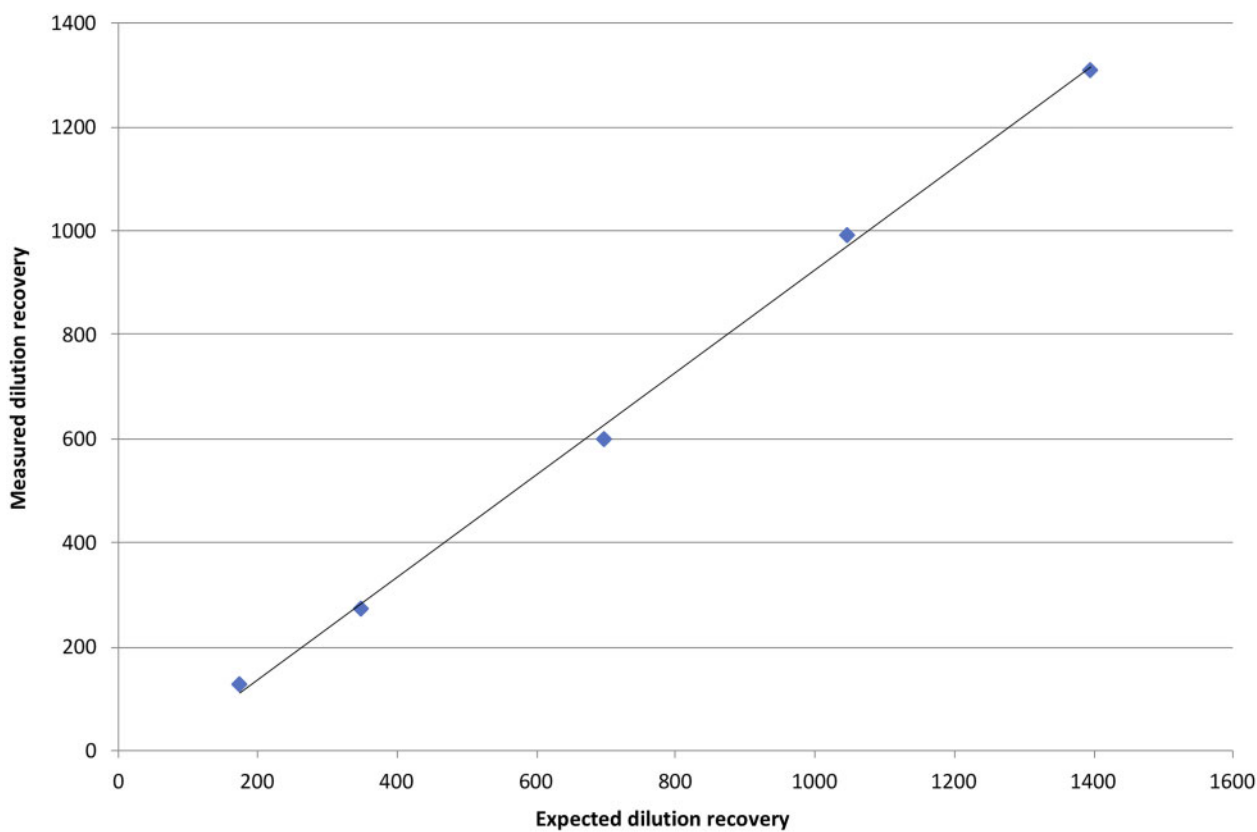


Figure 2 Graph demonstrating linear dilution of the patient's cTnT sample of 1745 ng/L in keeping with a likely macrotroponin causing an analytical interference.

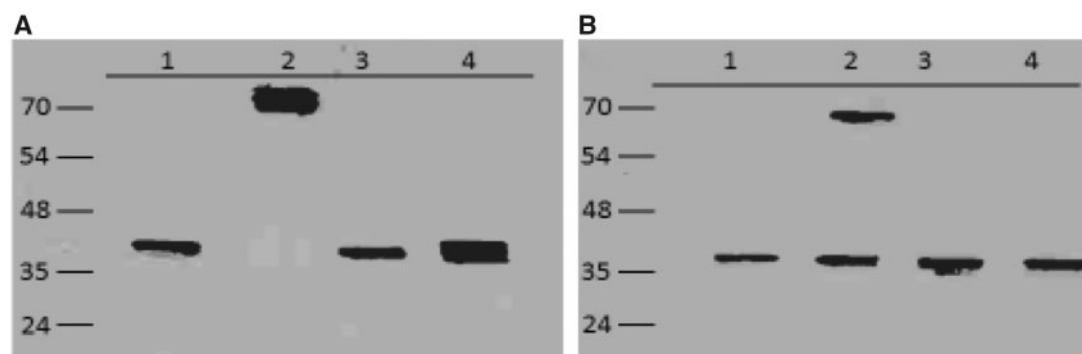


Figure 3 (A) Western blot of cTnT demonstrating intact free cTnT (lane 1) serum from index case (lane 2), serum from cTnT positive patients (lanes 3 and 4). (B) Western blot of Human IgG control (lane 1), index case (lane 2) cTnT positive patients (lanes 3 and 4).

diluent and with polyethylene glycol (25% w/v). Samples were incubated at room temperature for 10 minutes and centrifuged at $14^{\circ}000\text{g}$ for 5 min. Troponin T was analysed in the supernatant. Recovery was 705.8/1104 (63.9%) for the control material. For two control patient's recovery was 687/807.4 (85.1%) and 910/963.4 (94.5%). For the patient's day 4 sample recovery was 10.8/794.4 (1.4%) and for day 5 8.7/770.3 (1.1%). The presence of a macro form of cTnT was therefore confirmed. Subsequent electrophoresis using sodium dodecyl sulfate polyacrylamide gel electrophoresis (SDS-PAGE) and western blotting (immunofixation) with the M7 MAb anti-human cTnT (donated by Roche Diagnostics, Mannheim, Germany) against human cTnT and mouse anti-human immunoglobulin-G (IgG; IG266, Abcam, Cambridge, UK) revealed a cTnT-IgG complex (Figure 3).

Following this diagnosis, reassurance was given and he was discharged home with routine follow-up arranged. A subsequent outpatient 24-hour Holter demonstrated only sinus rhythm, which reaffirmed the unlikelihood of a cardiac arrhythmia and a dobutamine stress echocardiogram found no evidence of inducible ischaemia with a normal functioning heart. He was safely discharged from the cardiology services.

Discussion

Cardiac troponin is integral to the diagnosis of a myocardial infarction. Troponin rise from a MI occurs due to cardiac injury from acute cardiac ischaemia, although elevated levels are also seen in acute or chronic conditions not recognized as classical MI.^{1,2} This is often referred to as a 'false positive' rise, which is not entirely true as there is some underlying cardiac injury. The mechanism of injury may include a rise in cardiac oxygen demand, oxygen demand/supply mismatch,³ and the fourth universal definition of MI addresses this by distinguishing myocardial injury from MI.⁴ Interestingly, true analytical false positives do occur which are thought to be secondary to macro-troponin, an IgG complex attached to the troponin protein.⁵

In a clinical setting, elevation of cTnT due to macro-troponin appears to be relatively uncommon and more frequently seen with

cTnI than cTnT.⁵ However, the overall prevalence of macro-troponins may be more common than currently reported by clinicians. For instance, cTnT autoantibodies have been found in up to 9.9% of healthy blood donors⁶ and similarly, cTnI autoantibodies have been found in up to 12.7%.⁷ This is comparable with the prevalence of thyroglobulin and thyroperoxidase antibodies, which are commonly encountered in clinical practice.⁷ It is therefore probable that the rise in troponin levels attributed to clinical conditions other than MI, could actually be due to macro-troponins.

This case illustrates the importance of clinical assessment of patients admitted where the laboratory findings do not match the clinical state of the patient and the importance of close collaboration with the clinical chemistry laboratory. A significantly elevated troponin in an otherwise well individual should raise the suspicion of an analytical interference. The clue in this case was the sustained elevation in the absence of any other clinical condition likely to produce an elevated troponin of this magnitude. This led to an alternative troponin being measured which was normal and subsequently, to the diagnosis of the macro-troponin.

From this experience, it could be suggested that clinicians facing a persistently elevated troponin with an atypical history and lack of evidence suggestive of cardiac injury (ECG, echocardiography), should consider measurement of an alternative troponin. Invasive investigations could be avoided unless the history is suggestive of another clinical condition causing the rise. The important thing is to recognize the lack of a dynamic change and lack of comorbidities likely to produce a significant troponin elevation.

Conclusion

This case illustrates the importance of interpreting a troponin result in the clinical context of the patient and underlines the importance of clinical assessment of the patient. It also highlights the dangers of over-reliance on uncritical acceptance of laboratory results. True false-positive elevations of cardiac troponin from macro-troponins do occur, though they are rare. Cases of macro-troponin I have been reported in the literature, however, our case is the earliest

description of a falsely elevated troponin secondary to troponin T autoantibodies in a clinical setting.

Lead author biography

Zaki Akhtar graduated from St George's University of London in 2011 having completed his medical course and a bachelor's degree in Physiology from King's College London. Currently he is a research fellow at St George's Hospital, London.

Supplementary material

[Supplementary material](#) is available at *European Heart Journal - Case Reports* online.

Slide sets: A fully edited slide set detailing this case and suitable for local presentation is available online as [Supplementary data](#).

Consent: The authors confirm that written consent for submission and publication of this case report including image(s) and associated text has been obtained from the patient in line with COPE guidance.

Conflict of interest: none declared.

References

1. Thygesen K, Alpert JS, Jaffe AS, Chaitman BR, Bax JJ, Morrow DA, White HD; ESC Scientific Document Group. Fourth universal definition of myocardial infarction (2018). *Eur Heart J* 2019;**76**:1383–1415.
2. Eggers KM, Jernberg T, Lindahl B. Cardiac troponin elevation in patients without a specific diagnosis. *J Am Coll Cardiol* 2019;**73**:1–9.
3. Lefort G, D'Antonio C, Caffery T. A non-ischaemic cause of elevated troponin; *BMJ. Case Rep* 2014;**2014**:bcr2014203729.
4. Collinson P, Lindahl B. Type 2 myocardial infarction: the chimaera of cardiology? *Heart* 2015;**101**:1697–1703.
5. Michielsen EC, Bisschops PG, Janssen MJ. False positive troponin result caused by a true macrotroponin. *Clin Chem Lab Med* 2011;**49**:923–925.
6. Adamczyk M, Brashear RJ, Mattingly PG. Prevalence of autoantibodies to cardiac troponin T in healthy blood donors. *Clin Chem* 2009;**55**:1592–1593.
7. Adamczyk M, Brashear RJ, Mattingly PG. Circulating cardiac Troponin-I autoantibodies in human plasma and serum. *Ann N Y Acad Sci* 2009;**1173**:67–74.