

CORRECTION

Open Access



# Correction to: Implementation and impact of pediatric antimicrobial stewardship programs: a systematic scoping review

D. Donà<sup>1,2,3†</sup>, E. Barbieri<sup>1\*†</sup>, M. Daverio<sup>4</sup>, R. Lundin<sup>3</sup>, C. Giaquinto<sup>1,3</sup>, T. Zaoutis<sup>5,3</sup> and M. Sharland<sup>2,3</sup>

## Correction to: *Antimicrob Resist Infect Control*

<https://doi.org/10.1186/s13756-019-0659-3>

The original article [1] contains an error in Fig. 1 whereby the number of selected articles of the first box is incorrect. The correct version of Fig. 1 can be viewed ahead in this Correction article.

### Author details

<sup>1</sup>Division of Pediatric Infectious Diseases, Department for Woman and Child Health, University of Padua, Via Giustiniani 3, 35141 Padua, Italy. <sup>2</sup>Pediatric Infectious Disease Research Group, Institute for Infection and Immunity, St George's University of London, London, UK. <sup>3</sup>Fondazione Penta ONLUS, Padua, Italy. <sup>4</sup>Pediatric intensive care unit, Department for Woman and Child Health, University of Padua, Padua, Italy. <sup>5</sup>Division of Infectious Diseases and the Center for Pediatric Clinical Effectiveness, Children's Hospital of Philadelphia, Philadelphia, PA, USA.

Published online: 07 May 2020

### Reference

1. Donà D, et al. Implementation and impact of pediatric antimicrobial stewardship programs: a systematic scoping review. *Antimicrob Resist Infect Control*. 2020;9:3 <https://doi.org/10.1186/s13756-019-0659-3>.

---

The original article can be found online at <https://doi.org/10.1186/s13756-019-0659-3>.

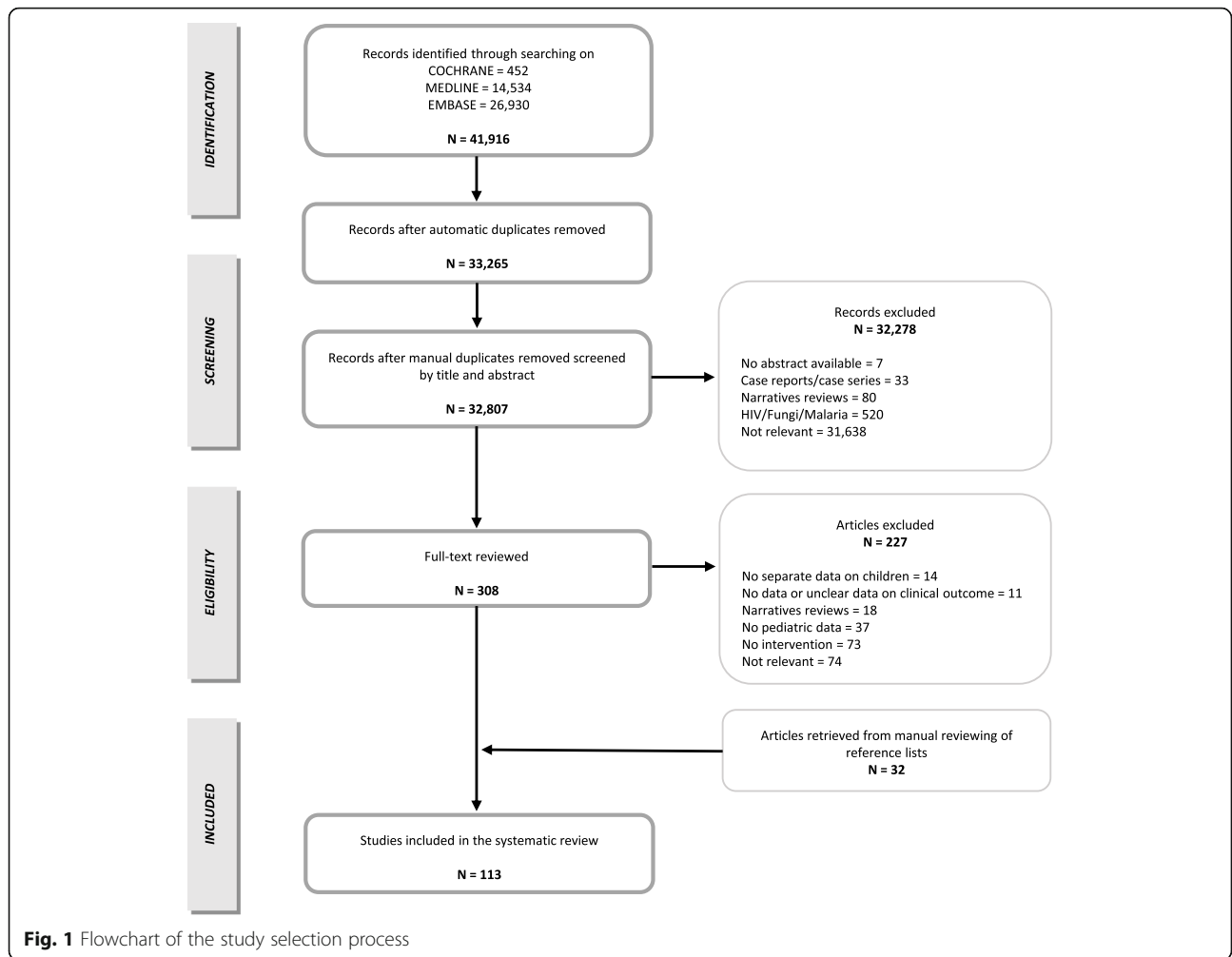
\* Correspondence: [elisa.barbieri.5@phd.unipd.it](mailto:elisa.barbieri.5@phd.unipd.it)

†D. Donà and E. Barbieri contributed equally to this work.

<sup>1</sup>Division of Pediatric Infectious Diseases, Department for Woman and Child Health, University of Padua, Via Giustiniani 3, 35141 Padua, Italy  
Full list of author information is available at the end of the article



© The Author(s). 2020 **Open Access** This article is licensed under a Creative Commons Attribution 4.0 International License, which permits use, sharing, adaptation, distribution and reproduction in any medium or format, as long as you give appropriate credit to the original author(s) and the source, provide a link to the Creative Commons licence, and indicate if changes were made. The images or other third party material in this article are included in the article's Creative Commons licence, unless indicated otherwise in a credit line to the material. If material is not included in the article's Creative Commons licence and your intended use is not permitted by statutory regulation or exceeds the permitted use, you will need to obtain permission directly from the copyright holder. To view a copy of this licence, visit <http://creativecommons.org/licenses/by/4.0/>. The Creative Commons Public Domain Dedication waiver (<http://creativecommons.org/publicdomain/zero/1.0/>) applies to the data made available in this article, unless otherwise stated in a credit line to the data.



**Fig. 1** Flowchart of the study selection process