

# Current Opinion in Obstetrics and Gynecology

## Clinical significance of cerebroplacental ratio

--Manuscript Draft--

<b>Manuscript Number:</b>	
<b>Full Title:</b>	Clinical significance of cerebroplacental ratio
<b>Article Type:</b>	Review Article
<b>Corresponding Author:</b>	Asma Khalil St George's Hospital NHS Trust LONDON, UNITED KINGDOM
<b>Corresponding Author Secondary Information:</b>	
<b>Corresponding Author's Institution:</b>	St George's Hospital NHS Trust
<b>Corresponding Author's Secondary Institution:</b>	
<b>First Author:</b>	Asma Khalil
<b>First Author Secondary Information:</b>	
<b>Order of Authors:</b>	Asma Khalil Asma. Khalil, MRCOG, MD, MB BCh, MSC(Epi) Erkan Kalafat
<b>Order of Authors Secondary Information:</b>	

**TITLE: Clinical significance of cerebroplacental ratio**

KALAFAT, Erkan. MD \*†

KHALIL, Asma. Professor, MRCOG\*‡

\*Fetal Medicine Unit, St George's University Hospitals NHS Foundation Trust, London, UK

† Middle East Technical University, Department of Statistics, Ankara, TURKEY

‡ Vascular Biology Research Centre, Molecular and Clinical Sciences Research Institute, St

George's University of London

**Corresponding Author**

Professor Asma Khalil

Fetal Medicine Unit

St George's University of London

London SW17 0RE

Telephone: (Work) +442032998256

Mobile: +447917400164

Fax: +442077339534

**Disclosure of interest**

Authors have nothing to disclose.

## ABSTRACT

**Purpose of review:** Two thirds of the pregnancies complicated by stillbirth demonstrate growth restriction. Identification of the fetus at risk of growth restriction is essential in order to reduce the risk of stillbirth. The aim of this review is to critically appraise the current evidence regarding clinical utility of cerebroplacental ratio (CPR) in antenatal surveillance.

**Recent findings:** The CPR has emerged as an assessment tool for fetuses at increased risk of growth disorders. CPR is a better predictor of adverse events compared to middle-cerebral artery or umbilical artery Doppler alone. The predictive value of CPR for adverse perinatal outcomes is better for suspected small-for-gestational age (SGA) fetuses compared to appropriate-for-gestational age (AGA) fetuses. CPR could be useful for the risk stratification of SGA fetuses to determine the timing of delivery and also to calculate the risk of intrapartum compromise or prolonged admission to the neonatal care unit. Although there are many proposed cut-offs for an abnormal CPR value, evidence is currently lacking to suggest the use of one cut-off over another. CPR appears to be associated with increased risk of intrapartum fetal compromise, abnormal growth velocity and lower birth weight in AGA fetuses as well. Moreover, birthweight differences are better explained with CPR compared to other factors such as ethnicity. However, the role of CPR in predicting adverse perinatal outcomes such as acidosis or low Apgar scores in AGA fetuses is yet to be determined.

**Summary:** CPR appears to be a useful surrogate of suboptimal fetal growth and intrauterine hypoxia and it is associated with a variety of perinatal adverse events.

**Keywords:** adverse outcome, morbidity, intrauterine death, neonatal, neurodevelopment

## Introduction

1  
2  
3 Fetal surveillance in order to identify fetal growth abnormalities is an important aspect of  
4 antenatal care. Small-for-gestational age (SGA) fetuses are at increased risk of adverse  
5 events such as intrauterine death, intrapartum fetal compromise, operative delivery and poor  
6 neonatal outcomes [1-7]. Successful antenatal monitoring and identification of SGA prior to  
7 delivery can mitigate the negative impact of fetal growth restriction (FGR) [8,9]. In UK, fundal  
8 height measurement is the routine method of growth assessment for women deemed to be at  
9 low-risk for developing SGA [10]. The basis for this approach lies in the lack of substantial  
10 evidence showing ultrasound scans are helpful for preventing perinatal death [11,12].  
11 However, recent evidence suggests that routine ultrasound scans can be helpful for the  
12 antenatal diagnosis of SGA and, more importantly, the identification of the subgroup of SGA  
13 fetuses at increased risk of adverse outcome [13]. Rather than using a biological basis, SGA  
14 is often defined with statistical terminology (percentile) which by default labels 3 to 10% of all  
15 pregnant population at risk for adverse perinatal outcomes. However, the actual incidence of  
16 adverse events is less than the apparent prevalence of SGA. Moreover, most fetuses who  
17 suffer adverse outcomes such as stillbirth or intrapartum fetal compromise are not suspected  
18 to be SGA during antenatal follow-up. Autopsy studies demonstrate that the rate of SGA in  
19 the pregnancies complicated with stillbirth may be overestimated due to the loss of fetal  
20 weight after intrauterine death [14]. The shortcomings of using estimated fetal weight (EFW)  
21 alone as a surrogate for adverse outcomes have been outlined in recent publications and it is  
22 evident that more refined markers of fetal health are needed [15-17].  
23  
24  
25  
26  
27  
28  
29  
30  
31  
32  
33  
34  
35  
36  
37  
38  
39  
40  
41  
42  
43  
44  
45  
46  
47  
48

49 The cerebroplacental ratio (CPR) has emerged as an assessment tool for fetuses at  
50 increased risk of growth disorders. CPR is calculated as a simple ratio of middle cerebral  
51 artery (MCA) pulsatility index (PI) and umbilical artery (UA) PI (Figure 1). A low CPR  
52 indicates a redistribution of the cardiac output to the brain. Cerebral redistribution of blood  
53 flow is a proxy for hypoxemia and is associated with poor perinatal and long-term  
54  
55  
56  
57  
58  
59  
60  
61  
62  
63  
64  
65

1 neurodevelopmental impairment [18,19]. Although cerebral redistribution is reflected in MCA  
2 Doppler, CPR has been shown to improve the accuracy of predicting adverse outcome  
3 compared with MCA or UA Doppler alone and also to have a strong association with  
4 intrauterine hypoxia [20,21]. In recent years, there is a surge in studies evaluating CPR in  
5 various sub-populations of pregnant women. The aim of this review is to summarize the key  
6 evidence regarding the utility of CPR in the antenatal management of SGA and appropriate  
7 for gestational age (AGA) fetuses.  
8  
9

### 10 **Utility of CPR in SGA fetuses: diagnosis and risk stratification**

11 The difficulty in diagnosing late-onset FGR is partly due to the suboptimal performance of  
12 EFW alone in identifying the pregnancies with SGA baby. The addition of uterine artery  
13 Doppler and placental biomarkers during varying gestational ages marginally improves the  
14 detection of SGA in large cohort studies which implies that late-onset FGR is associated with  
15 placental dysfunction [22-24]. The degree of placental dysfunction in late-onset FGR is  
16 unlikely to produce the characteristic findings found in early-onset cases such as loss of end-  
17 diastolic flow or reverse flow in umbilical artery. The lack of characteristics changes in the UA  
18 Doppler makes it a poor candidate for improving the detection of late-onset FGR. However,  
19 recent evidence suggests that the addition of CPR to EFW may improve the detection of late-  
20 onset FGR [25,26]. However, the magnitude of improvement with the addition of CPR was  
21 marginal at best (5% increase in detection rate in the third trimester and likelihood ratio of 1.6  
22 in the second trimester). Moreover, larger studies showed limited benefit of adding Doppler  
23 assessment (mainly uterine artery) to EFW and biomarkers for predicting SGA at birth  
24 [17,27-30]. The utility of CPR in predicting SGA at birth in unselected pregnancies appears to  
25 be limited and CPR may be better suited for risk stratification of suspected SGA babies  
26 [17,31]. Miranda *et al* have demonstrated prediction models (EFW+CPR or UA, suspected  
27 SGA and unselected cohort, respectively) have higher predictive accuracies when used in  
28 suspected-SGA fetuses compared to unselected pregnancies (detection rate: 63.0% vs  
29 20.0%) [31]. Veglia *et al* have proposed a risk stratification protocol for suspected-SGA  
30  
31  
32  
33  
34  
35  
36  
37  
38  
39  
40  
41  
42  
43  
44  
45  
46  
47  
48  
49  
50  
51  
52  
53  
54  
55  
56  
57  
58  
59  
60  
61  
62  
63  
64  
65

1 fetuses which included CPR, uterine artery PI, pregnancy associated plasma protein and  
2 presence of hypertension [16]. They compared the outcomes of pre-protocol management in  
3 which suspected-SGA fetuses were delivered at 37 weeks' gestation to protocol group where  
4 pregnancies were induced at specific times according to their perceived risk. The  
5 implementation of risk stratification protocol improved the vaginal delivery rates and lowered  
6 neonatal composite adverse outcomes which were mainly due to neonatal care unit  
7 admission and ventilation support. Although preliminary evidence suggests that CPR is  
8 beneficial for risk stratification of SGA fetuses, more prospective studies are needed to clarify  
9 the role of CPR.  
10  
11  
12  
13  
14  
15  
16  
17  
18  
19  
20  
21

### 22 **Timing and management of labor in suspected SGA**

23  
24 Suspected SGA fetuses are at increased risk of adverse perinatal outcomes compared to  
25 AGA fetuses. [32] Numerous studies have evaluated the association of CPR with these  
26 adverse outcomes and have shown that the CPR is a useful marker for identifying fetuses at  
27 increased risk [1-7,33]. Although intrauterine death is a rare event in late-onset FGR, it is  
28 also legitimate concern which prompts most physicians to choose induction of labor at term  
29 (beyond 37 weeks' gestation) over expectant management. The ideal time for induction of  
30 labor and its association with perinatal outcomes or its interaction with antenatal variables  
31 such as parity, EFW and CPR is yet to be determined. Two cohort studies investigated the  
32 association of CPR and known antenatal and intrapartum risk factors with the risk of  
33 intrapartum fetal compromise and neonatal care unit admission [2,5]. The gestational age at  
34 delivery was found to have a significant impact on both outcomes in these studies.  
35 Interestingly, the direction of association differed. The risk of intrapartum fetal compromise  
36 appeared to increase beyond 39 weeks, while the risk of neonatal care unit admissions  
37 appeared to decrease beyond 37 weeks' gestation. As of yet, it is not possible to propose a  
38 management algorithm based on high-quality evidence. However, empirical evidence and  
39 findings of non-randomized studies suggest that fetuses showing risk of significant  
40 compromise due to abnormal CPR or very low EFW should be induced earlier whereas  
41  
42  
43  
44  
45  
46  
47  
48  
49  
50  
51  
52  
53  
54  
55  
56  
57  
58  
59  
60  
61  
62  
63  
64  
65

1 expectant management up to 39 weeks' gestation may be feasible for a subgroup of SGA  
2 fetuses (Figure 2) [2,5,16]. The benefit of prolonging gestation beyond 39 weeks' gestation  
3 appears to be limited even in low-risk pregnancies, and therefore, suspected SGA fetuses  
4 should not be expectantly managed beyond this point [34].  
5  
6  
7  
8  
9

10 Labor management of suspected SGA fetuses is also complicated due to varying risk of  
11 intrapartum compromise. A multivariable prediction model including CPR, gestational age at  
12 delivery, parity and intrapartum risk factors was able to discriminate the fetuses who will  
13 need operative delivery for presumed compromise with modest accuracy (AUC: area under  
14 the curve: 0.76, 95% CI: 0.72 – 0.80) [5]. In this cohort, the CPR showed a linear association  
15 with the risk of operative delivery and the strength of association was similar to that of  
16 intrapartum risk factors such as labor induction and augmentation or epidural analgesia. An  
17 external validation study is currently ongoing which could verify the utility of the prediction  
18 model in clinical practice (Kalafat E, Morales-Rosello J, Scarinci E, Thilaganathan B, Khalil A.  
19 under review). Although studies on CPR commonly use a predefined threshold (<10<sup>th</sup> centile,  
20 0.6765 MoM, <1.1 etc.), some values above these thresholds may be falsely reassuring.  
21 Prior *et al* suggested a CPR above >90<sup>th</sup> centile for gestational age is a protective factor  
22 against intrapartum fetal compromise [35]. Findings from these two studies imply that CPR  
23 have a dose-response relationship with the risk of intrapartum fetal compromise and using  
24 crude cut-offs may be less efficient for predicting adverse outcomes [5,35]. However, the  
25 clinical applicability of CPR greatly diminishes when we use cut-offs (as a binary variable)  
26 instead of using it as a continuous measure. A mobile app is also developed to overcome  
27 this problem and calculate the individualized risk of operative delivery with ease using the  
28 multivariable model suggested by Kalafat *et al* (IRIS tool for SGA babies,  
29 <https://itunes.apple.com/us/app/iris-tool-for-sga-babies/id1371991518?ls=1&mt=8>) [5].  
30  
31  
32  
33  
34  
35  
36  
37  
38  
39  
40  
41  
42  
43  
44  
45  
46  
47  
48  
49  
50  
51  
52  
53  
54  
55  
56  
57  
58  
59

## 60 **Short-term and long-term neonatal outcomes of SGA fetuses**

61  
62  
63  
64  
65

1 CPR has been shown to be a predictor of short- and long-term adverse perinatal outcomes in  
2 SGA fetuses [3,36]. Suspected SGA fetuses with low CPR are at increased risk of perinatal  
3 death, neonatal acidosis, low Apgar scores, and composite adverse outcomes (Table 1) [37].  
4 CPR also shows better accuracy for predicting adverse outcomes compared to MCA  
5 assessment (Table 1) [38]. CPR is also associated with the risk of long-term cognitive  
6 impairment in suspected SGA fetuses [39,40]. Although signs of overt neurological damage  
7 could not be demonstrated via biomarkers, these findings suggest that cerebral  
8 autoregulation is not entirely a protective mechanism but merely a salvage pathway in  
9 response to inadequate oxygenation [41]. The short- and long-term outcomes of fetuses with  
10 abnormal CPR suggests that prolonging the gestation when there is evidence of cerebral  
11 involvement may not be beneficial for the fetus.  
12  
13  
14  
15  
16  
17  
18  
19  
20  
21  
22  
23  
24  
25  
26  
27

### 28 **Changing CPR values with gestation: role of longitudinal assessment in SGA fetuses**

29 Abnormal growth velocity was suggested as an adjunct marker for diagnosing late-onset  
30 FGR in a recent Delphi consensus [42]. Some studies suggest that models accounting for  
31 the longitudinal changes in Doppler parameters are superior to cross-sectional assessment  
32 for the prediction of adverse outcomes [43-45]. Studies investigating the association of  
33 longitudinal changes in fetal biometry and Doppler parameters with the risk of adverse  
34 pregnancy outcome have reported conflicting results [7,46-49]. Despite the fact that  
35 assessment of the fetal growth velocity is likely to be useful in identifying FGR, the complex  
36 nature of its calculation and lack of standardization of its assessment limits its potential use  
37 in routine clinical practice. More studies are needed to demonstrate whether the change in  
38 CPR with advancing gestation improves the prediction of the fetus at risk of adverse  
39 pregnancy outcome, compared to its assessment at a single point.  
40  
41  
42  
43  
44  
45  
46  
47  
48  
49  
50  
51  
52  
53  
54  
55  
56

### 57 **Role of CPR in early-onset FGR**

58  
59  
60  
61  
62  
63  
64  
65



1 The role of CPR in early-onset FGR has been scarcely evaluated. Current decision-making  
2 protocol for early-onset FGR relies on venous Doppler and computerized cardiotocography  
3 leaving little room for CPR in the management of these fetuses. However, the TRUFFLE  
4 investigators have reported that higher MCA PI z-scores and lower umbilicocerebral ratio  
5 were associated with better neonatal survival and normal neurodevelopmental outcome at 2-  
6 years [50]. Post-hoc analyses of randomized trials such as TRUFFLE could be beneficial for  
7 discerning the role of CPR in the management of early-onset FGR.  
8  
9

### 17 **Utility of CPR in AGA fetuses: failing to reach growth potential and stillbirth**

20 EFW is a poor indicator of fetal well-being and most stillbirth cases are not suspected to be  
21 SGA during the antenatal period [51]. In a recent cohort study, Binder *et al* have  
22 demonstrated that episodes of reduced fetal movements are associated with lower CPR  
23 values, with women reporting recurrent episodes having even lower CPR values compared  
24 to women with a single episode of reduced fetal movement [51]. It is important to note that  
25 none of the stillbirth cases in this cohort were suspected to be SGA during the antenatal  
26 follow-up. CPR showed an independent association with both reduced fetal movements and  
27 stillbirth in this relatively high-risk cohort. In a similar study, Monaghan *et al* have suggested  
28 that the utility of CPR may be limited in low-risk pregnancies in which the uterine artery  
29 Doppler and EFW showed significant association with stillbirth [52]. However, the estimated  
30 effect for all three variables (CPR, uterine artery PI and EFW) were marked by large  
31 confidence intervals due to the low number of stillbirth cases (n=12) in the cohort. CPR still  
32 had a positive but insignificant association with stillbirth (OR: 1.97) due to wide confidence  
33 intervals which may very well be due to low number of cases included in the study. These  
34 findings are in line with previous reports suggesting that placental dysfunction may be better  
35 predicted by Doppler studies compared to EFW [1,7]. CPR appears to be beneficial for  
36 identifying fetuses who fail to reach their growth potential while still remaining within normal  
37 EFW ranges.  
38  
39  
40  
41  
42  
43  
44  
45  
46  
47  
48  
49  
50  
51  
52  
53  
54  
55  
56  
57  
58  
59  
60  
61  
62  
63  
64  
65

1 Birth weight is known to be associated with maternal characteristics, including ethnicity.  
2 Customized growth charts were developed to account for ethnic differences with the aim of  
3 improving the detection of SGA fetuses at risk. A recent study by Morales-Rosello *et al* used  
4 a different approach to address this issue and has shown that CPR is better in explaining  
5 birth weight differences, when compared to ethnicity [53]. Furthermore, racial/ethnic standard  
6 proposed by the National Institute of Child Health and Human development failed to better  
7 identify fetuses at risk for neonatal adverse outcomes compared to Hadlock chart [54].  
8 Similar results were reported for customized charts proposed by Gardosi *et al* which also  
9 uses maternal ethnicity as a modifier [55]. These findings suggest that birth weight  
10 differences may be better explained in a context of placental function rather than  
11 ethnic/genetic influence.  
12  
13  
14  
15  
16  
17  
18  
19  
20  
21  
22  
23  
24  
25

### 26 **Association of CPR with adverse outcomes in AGA fetuses**

27 In recent years, an increasing number of studies investigate the association of CPR with  
28 adverse outcome in low-risk and/or AGA pregnancies [56-69]. Initially, it may appear  
29 unconventional to associate CPR with adverse outcome in apparently healthy pregnancies.  
30 However, as stated previously, EFW is a poor predictor of fetal well-being and most stillbirth  
31 cases are not suspected to be SGA during the antenatal assessment. Moreover, AGA  
32 stillbirth cases contribute to the majority of perinatal deaths even though they are classified  
33 as low risk compared to SGA babies. Therefore, it is more beneficial to investigate better  
34 markers of fetal well-being in apparently low-risk pregnancies. Current literature reports  
35 conflicting results regarding the value of CPR in AGA pregnancies. Most studies suggest an  
36 increased risk of intrapartum fetal compromise and operative delivery due to presumed  
37 compromise in AGA fetuses with low CPR (Table 2). Three most commonly reported  
38 associations of low CPR in AGA babies were increased risk of presumed fetal compromise,  
39 lower birth weight and lower gestational age at delivery. The estimated effects are relatively  
40 similar in the various published studies and are also consistent between blinded prospective  
41 studies and retrospective studies. However, the strength of association between CPR and  
42  
43  
44  
45  
46  
47  
48  
49  
50  
51  
52  
53  
54  
55  
56  
57  
58  
59  
60  
61  
62  
63  
64  
65

1 these outcomes is not strong enough to suggest preemptive cesarean section over a trial of  
2 labor, mainly due to the strong influence of intrapartum risk factors which are unknown  
3 antenatally. However, the association implies that CPR is beneficial in identifying a subgroup  
4 of AGA pregnancies at greater risk of fetal compromise and would merit closer intrapartum  
5 surveillance. Neonatal outcome measures such as admission to the neonatal unit or  
6 abnormal umbilical cord pH were inconsistently reported to be associated with low CPR in  
7 contrast to SGA babies. This heterogeneity in the reported association between CPR and  
8 short-term perinatal outcomes could be explained by the confounding effect of intrapartum risk  
9 factors, variable diagnostic criteria of intrapartum fetal compromise and different intrapartum  
10 management protocols across centres. It is also plausible that the lower association of CPR  
11 with adverse neonatal outcomes in AGA than SGA fetuses could be explained by the fact  
12 that AGA fetuses are more resilient to metabolic stress compared to SGA fetuses. High-  
13 quality large prospective studies with consistent intrapartum protocols are needed to  
14 determine the place of CPR in the management of AGA fetuses. In the meantime, close  
15 intrapartum surveillance may be prudent in AGA fetuses with low CPR. Figure 3 summarizes  
16 the utility of CPR in SGA and AGA fetuses.

## 37 **Conclusion**

38 CPR appears to be a useful surrogate for suboptimal fetal growth and intrauterine hypoxia in  
39 suspected SGA fetuses. A low CPR value should prompt delivery at term ( $\geq 37$  weeks'  
40 gestation) in suspected SGA fetuses and a close intrapartum surveillance in AGA fetuses.  
41 Although there are many proposed cut-offs for abnormal CPR, most of these cut-offs are  
42 associated with similar risk estimates as long as the used cut-off adjusts for gestational age  
43 (i.e. percentile or MoM). Future large randomized trials should help with discerning the role of  
44 CPR in the management late-onset FGR.

## 60 **Key points**

- 1  
2  
3  
4  
5  
6  
7  
8  
9  
10  
11  
12  
13  
14  
15  
16  
17  
18  
19  
20  
21  
22  
23  
24  
25  
26  
27  
28  
29  
30  
31  
32  
33  
34  
35  
36  
37  
38  
39  
40  
41  
42  
43  
44  
45  
46  
47  
48  
49  
50  
51  
52  
53  
54  
55  
56  
57  
58  
59  
60  
61  
62  
63  
64  
65
- A low cerebroplacental ratio (CPR) is associated with poor perinatal outcomes including stillbirth, perinatal death, low Apgar score, neonatal acidosis, admission to the neonatal care unit, intrapartum compromise, cesarean delivery and long-term neurocognitive impairment in suspected small-for-gestational age (SGA) fetuses.
  - In fetuses deemed to be appropriate for gestational age (AGA), CPR is still associated with abnormal growth velocity, lower birth weight and increased rate of intrapartum fetal compromise.
  - The stand-alone predictive value of CPR is unlikely to be sufficient for clinical use without using other antenatal and intrapartum variables in both SGA and AGA fetuses.

### **Acknowledgements**

None

## REFERENCES

- 1  
2 1. Khalil A, Morales-Rosello J, Townsend R, et al. Value of third-trimester  
3  
4 cerebroplacental ratio and uterine artery Doppler indices as predictors of stillbirth and  
5  
6 perinatal loss. *Ultrasound Obstet Gynecol.* 2016; **47**: 74-80.  
7
- 8  
9 2. Kalafat E, Morales-Rosello J, Thilaganathan B, et al. Risk of neonatal care unit  
10  
11 admission in small for gestational age fetuses at term: a prediction model and internal  
12  
13 validation. *J Matern Fetal Neonatal.* 2018; 1-8. [epub ahead of print] [\*Multivariable  
14  
15 prediction model for assessing the risk of prolonged neonatal care unit admission  
16  
17 showing gestational age at delivery, CPR and EFW centile have significant impact.]  
18
- 19  
20 3. Morales-Rosello J, Khalil A, Morlando M, et al. Poor neonatal acid-base status in term  
21  
22 fetuses with low cerebroplacental ratio. *Ultrasound Obstet Gynecol.* 2015; **45**: 156-  
23  
24 161.  
25
- 26  
27 4. Morales-Rosello J, Khalil A, Morlando M, et al. Changes in fetal Doppler indices as a  
28  
29 marker of failure to reach growth potential at term. *Ultrasound Obstet Gynecol.* 2014;  
30  
31 **43**: 303-310.  
32
- 33  
34 5. Kalafat E, Morales-Rosello J, Thilaganathan B, et al. Risk of operative delivery for  
35  
36 intrapartum fetal compromise in small-for-gestational-age fetuses at term: an  
37  
38 internally validated prediction model. *Am J Obstet Gynecol.* 2018; **218**: 134 e131-134  
39  
40 e138. [**\*\*A multivariable model combining antenatal and intrapartum factors for the**  
41  
42 **prediction of operative delivery due to presumed fetal compromise. Individual risk**  
43  
44 **assessment is possible by using 6 variables suggested in the model.**]  
45
- 46  
47 6. Khalil AA, Morales-Rosello J, Elsaddig M, et al. The association between fetal  
48  
49 Doppler and admission to neonatal unit at term. *Am J Obstet Gynecol.* 2015; **213**: 57  
50  
51 e51-57.  
52
- 53  
54 7. Khalil A, Morales-Rosello J, Khan N, et al. Is cerebroplacental ratio a marker of  
55  
56 impaired fetal growth velocity and adverse pregnancy outcome? *Am J Obstet*  
57  
58 *Gynecol.* 2017; **216**: 606 e601-606 e610. [**\*Retrospective cohort study suggests**  
59  
60 **impaired growth velocity is associated with an abnormal CPR]**  
61  
62  
63  
64  
65

- 1  
2  
3  
4  
5  
6  
7  
8  
9  
10  
11  
12  
13  
14  
15  
16  
17  
18  
19  
20  
21  
22  
23  
24  
25  
26  
27  
28  
29  
30  
31  
32  
33  
34  
35  
36  
37  
38  
39  
40  
41  
42  
43  
44  
45  
46  
47  
48  
49  
50  
51  
52  
53  
54  
55  
56  
57  
58  
59  
60  
61  
62  
63  
64  
65
8. Policiano C, Fonseca A, Mendes JM, et al. Small-for-gestational-age babies of low-risk term pregnancies: does antenatal detection matter? *J Matern Fetal Neonatal*. 2018; **31**: 1426-1430.
  9. Lindqvist PG, Molin J. Does antenatal identification of small-for-gestational age fetuses significantly improve their outcome? *Ultrasound Obstet Gynecol*. 2005; **25**: 258-264.
  10. No GtG. The Investigation and Management of the Small-for-Gestational-Age Fetus.
  11. Whitworth M, Bricker L, Mullan C. Ultrasound for fetal assessment in early pregnancy. *The Cochrane database of systematic reviews*. 2015: CD007058.
  12. Bricker L, Medley N, Pratt JJ. Routine ultrasound in late pregnancy (after 24 weeks' gestation). *The Cochrane database of systematic reviews*. 2015: CD001451.
  13. Sovio U, White IR, Dacey A, et al. Screening for fetal growth restriction with universal third trimester ultrasonography in nulliparous women in the Pregnancy Outcome Prediction (POP) study: a prospective cohort study. *Lancet*. 2015; **386**: 2089-2097.
  14. Man J, Hutchinson JC, Ashworth M, et al. Effects of intrauterine retention and postmortem interval on body weight following intrauterine death: implications for assessment of fetal growth restriction at autopsy. *Ultrasound Obstet Gynecol*. 2016; **48**: 574-578.
  15. Cavallaro A, Veglia M, Svirko E, et al. Using fetal abdominal circumference growth velocity to improve the prediction of adverse outcomes in near term small for gestational age fetuses. *Ultrasound Obstet Gynecol*. 2017. [epub ahead of publication]
  16. Veglia M, Cavallaro A, Papageorghiou A, et al. Small-for-gestational-age babies after 37 weeks: impact study of risk-stratification protocol. *Ultrasound Obstet Gynecol*. 2018; **52**: 66-71. s[\*Risk stratification protocol for the management of suspected small-for-gestational age fetuses]
  17. Triunfo S, Crispi F, Gratacos E, et al. Prediction of delivery of small-for-gestational-age neonates and adverse perinatal outcome by fetoplacental Doppler at 37 weeks'

gestation. *Ultrasound Obstet Gynecol.* 2017; **49**: 364-371. [\*Utility of CPR for predicting adverse outcome in late-onset growth restriction]

18. Poudel R, McMillen IC, Dunn SL, et al. Impact of chronic hypoxemia on blood flow to the brain, heart, and adrenal gland in the late-gestation IUGR sheep fetus. *Am J Physiol Regul Integr Comp Physiol.* 2015; **308**: R151-162.
19. Eixarch E, Meler E, Iraola A, et al. Neurodevelopmental outcome in 2-year-old infants who were small-for-gestational age term fetuses with cerebral blood flow redistribution. *Ultrasound Obstet Gynecol.* 2008; **32**: 894-899.
20. HersHKovitz R, Kingdom JCP, Geary M, et al. Fetal cerebral blood flow redistribution in late gestation: identification of compromise in small fetuses with normal umbilical artery Doppler. *Ultrasound Obstet Gynecol.* 2000; **15**: 209–212.
21. Zhu MY, Milligan N, Keating S, et al. The hemodynamics of late-onset intrauterine growth restriction by MRI. *Am J Obstet Gynecol.* 2016; **214**: 367 e361-367 e317.
22. Poon LC, Lesmes C, Gallo DM, et al. Prediction of small-for-gestational-age neonates: screening by biophysical and biochemical markers at 19-24 weeks. *Ultrasound Obstet Gynecol.* 2015; **46**: 437-45.
23. Bakalis S, Peeva G, Gonzalez R, et al. Prediction of small-for-gestational-age neonates: screening by biophysical and biochemical markers at 30-34 weeks. *Ultrasound Obstet Gynecol.* 2015; **46**: 446-51.
24. Fadigas C, Peeva G, Mendez O, et al. Prediction of small-for-gestational-age neonates: screening by placental growth factor and soluble fms-like tyrosine kinase-1 at 35-37 weeks. *Ultrasound Obstet Gynecol.* 2015; **46**: 191-7.
25. Rial-Crestelo M, Martinez-Portilla RJ, et al. Added value of cerebro-placental ratio and uterine artery Doppler at routine third trimester screening as a predictor of SGA and FGR in non-selected pregnancies. *J Matern Fetal Neonatal Med.* 2018 [epub ahead of print]

- 1  
2  
3  
4  
5  
6  
7  
8  
9  
10  
11  
12  
13  
14  
15  
16  
17  
18  
19  
20  
21  
22  
23  
24  
25  
26  
27  
28  
29  
30  
31  
32  
33  
34  
35  
36  
37  
38  
39  
40  
41  
42  
43  
44  
45  
46  
47  
48  
49  
50  
51  
52  
53  
54  
55  
56  
57  
58  
59  
60  
61  
62  
63  
64  
65
26. Hernandez-Andrade E, Maymon E, Erez O, et al. A Low Cerebroplacental Ratio at 20-24 Weeks of Gestation Can Predict Reduced Fetal Size Later in Pregnancy or at Birth. *Fetal Diagn Ther.* 2017 [epub ahead of print]
27. Triunfo S, Parra-Saavedra M, Rodriguez-Sureda V, et al. Angiogenic Factors and Doppler Evaluation in Normally Growing Fetuses at Routine Third-Trimester Scan: Prediction of Subsequent Low Birth Weight. *Fetal Diagn Ther.* 2016; **40**: 13-20.
28. Miranda J, Rodriguez-Lopez M, Triunfo S, et al. Prediction of fetal growth restriction using estimated fetal weight vs a combined screening model in the third trimester. *Ultrasound Obstet Gynecol.* 2017; **50**: 603-611.
29. Sotiriadis A, Figueras F, Eleftheriades M, et al. First-trimester and combined first- and second-trimester prediction of small-for-gestational age and fetuses with late growth restriction. *Ultrasound Obstet Gynecol.* 2018 [epub ahead of print]
30. Akolekar R, Syngelaki A, Gallo DM, et al. Umbilical and fetal middle cerebral artery Doppler at 35-37 weeks' gestation in the prediction of adverse perinatal outcome. *Ultrasound Obstet Gynecol.* 2015; **46**: 82-92.
31. Miranda J, Triunfo S, Rodriguez-Lopez M, et al. Performance of third-trimester combined screening model for prediction of adverse perinatal outcome. *Ultrasound Obstet Gynecol.* 2017; **50**: 353-360.
32. Madden JV, Flatley CJ, Kumar S. Term small-for-gestational-age infants from low-risk women are at significantly greater risk of adverse neonatal outcomes. *Am J Obstet Gynecol.* 2018; **218**: 525.e1-525.e9. [**\*Very large cohort study which identifies a subgroup of SGA fetuses at increased risk of adverse outcome**]
33. Sirico A, Diemert A, Glosemeyer P, et al. Prediction of adverse perinatal outcome by cerebroplacental ratio adjusted for estimated fetal weight. *Ultrasound Obstet Gynecol.* 2018; **51**: 381-386.
34. Grobman WA, Rice MM, Reddy UM, et al. Labor Induction versus Expectant Management in Low-Risk Nulliparous Women. *N Engl J Med.* 2018; **379**: 513-23.



- 1  
2  
3  
4  
5  
6  
7  
8  
9  
10  
11  
12  
13  
14  
15  
16  
17  
18  
19  
20  
21  
22  
23  
24  
25  
26  
27  
28  
29  
30  
31  
32  
33  
34  
35  
36  
37  
38  
39  
40  
41  
42  
43  
44  
45  
46  
47  
48  
49  
50  
51  
52  
53  
54  
55  
56  
57  
58  
59  
60  
61  
62  
63  
64  
65
35. Prior T, Mullins E, Bennett P, et al. Prediction of intrapartum fetal compromise using the cerebroumbilical ratio: a prospective observational study. *Am J Obstet Gynecol.* 2013; **208**: 124 e121-126.
36. Morales-Rosello J, Khalil A, Alberola-Rubio J, et al. Neonatal Acid-Base Status in Term Fetuses: Mathematical Models Investigating Cerebroplacental Ratio and Birth Weight. *Fetal Diagn Ther.* 2015; **38**: 55-60.
37. Conde-Agudelo A, Villar J, Kennedy SH, et al. Predictive accuracy of cerebroplacental ratio for adverse perinatal and neurodevelopmental outcomes in suspected fetal growth restriction: systematic review and meta-analysis. *Ultrasound Obstet Gynecol.* 2018. [\*Meta-analysis of studies investigating association of abnormal CPR with adverse perinatal outcomes]
38. Vollgraff Heidweiller-Schreurs CA, De Boer MA, Heymans MW, et al. Prognostic accuracy of cerebroplacental ratio and middle cerebral artery Doppler for adverse perinatal outcome: systematic review and meta-analysis. *Ultrasound Obstet Gynecol.* 2018; **51**: 313-22. [\*Meta-analysis of studies comparing CPR with MCA Doppler for the prediction of adverse events. It demonstrates which outcome domains CPR is superior to MCA alone.]
39. Meher S, Hernandez-Andrade E, Basheer SN, et al. Impact of cerebral redistribution on neurodevelopmental outcome in small-for-gestational-age or growth-restricted babies: a systematic review. *Ultrasound Obstet Gynecol.* 2015; **46**: 398-404.
40. Bellido-Gonzalez M, Diaz-Lopez MA, Lopez-Criado S, et al. Cognitive Functioning and Academic Achievement in Children Aged 6-8 Years, Born at Term After Intrauterine Growth Restriction and Fetal Cerebral Redistribution. *J Pediatr Psychol.* 2017; **42**: 345-54. [\*Evidence for long-term neurocognitive impairment in suspected SGA fetuses born with abnormal CPR]
41. Morales-Rosello J, Khalil A, Alba-Redondo A, et al. Protein S100beta in Late-Pregnancy Fetuses with Low Birth Weight and Abnormal Cerebroplacental Ratio.

*Fetal Diagn Ther.* 2017; **41**: 15-22. [\* No evidence of overt brain damage in fetuses born with abnormal CPR as measured with tissue necrosis markers]

42. Gordijn SJ, Beune IM, Thilaganathan B, Papageorghiou A, Baschat AA, Baker PN, et al. Consensus definition of fetal growth restriction: a Delphi procedure. *Ultrasound Obstet Gynecol.* 2016; **48**: 333-9.
43. Ebbing C, Rasmussen S, Kiserud T. Middle cerebral artery blood flow velocities and pulsatility index and the cerebroplacental pulsatility ratio: longitudinal reference ranges and terms for serial measurements. *Ultrasound Obstet Gynecol.* 2007; **30**: 287 – 96.
44. Karlsen HO, Ebbing C, Rasmussen S, et al. Use of conditional centiles of middle cerebral artery pulsatility index and cerebroplacental ratio in the prediction of adverse perinatal outcomes. *Acta Obstet Gynecol Scand.* 2016; **95**: 690-696.
45. Karlsen HO, Johnsen SL, Rasmussen S, et al. Prediction of adverse perinatal outcome of small-for-gestational-age pregnancy using size centiles and conditional growth centiles. *Ultrasound Obstet Gynecol.* 2016; **48**: 217-223.
46. Basuki TR, Caradeux J, Eixarch E, et al. Longitudinal Assessment of Abdominal Circumference versus Estimated Fetal Weight in the Detection of Late Fetal Growth Restriction. *Fetal Diagn Ther.* 2018. [epub ahead of print]
47. Triunfo S, Crovetto F, Rodriguez-Sureda V, et al. Changes in uterine artery Doppler velocimetry and circulating angiogenic factors in the first half of pregnancies delivering a small-for-gestational-age neonate. *Ultrasound Obstet Gynecol.* 2017; **49**: 357-363.
48. Caradeux J, Eixarch E, Mazarico E, et al. Second- to third-trimester longitudinal growth assessment for prediction of small-for-gestational age and late fetal growth restriction. *Ultrasound Obstet Gynecol.* 2018; **51**: 219-224.
49. Caradeux J, Eixarch E, Mazarico E, et al. Longitudinal growth assessment for prediction of adverse perinatal outcome in fetuses suspected to be small-for-gestational age. *Ultrasound Obstet Gynecol.* 2017. [epub ahead of print]

- 1  
2  
3  
4  
5  
6  
7  
8  
9  
10  
11  
12  
13  
14  
15  
16  
17  
18  
19  
20  
21  
22  
23  
24  
25  
26  
27  
28  
29  
30  
31  
32  
33  
34  
35  
36  
37  
38  
39  
40  
41  
42  
43  
44  
45  
46  
47  
48  
49  
50  
51  
52  
53  
54  
55  
56  
57  
58  
59  
60  
61  
62  
63  
64  
65
50. Stampalija T, Arabin B, Wolf H, et al. Is middle cerebral artery Doppler related to neonatal and 2-year infant outcome in early fetal growth restriction? *Am J Obstet Gynecol.* 2017; **216**: 521 e1- e13. [\*Poor neurodevelopmental outcome in early-onset fetal growth restricted fetuses with cerebral redistribution]
51. Binder J, Monaghan C, Thilaganathan B, et al. Reduced fetal movements and cerebroplacental ratio: evidence for worsening fetal hypoxemia. *Ultrasound Obstet Gynecol.* 2018; **51**: 375-80. [\*Association of CPR with reduced fetal movements at term.]
52. Monaghan C, Binder J, Thilaganathan B, et al. Perinatal loss at term: role of uteroplacental and fetal Doppler assessment. *Ultrasound Obstet Gynecol.* 2018; **52**: 72-7.
53. Morales-Rosello J, Dias T, Khalil A, et al. Birth weight differences at term are explained by placental dysfunction, but not by maternal ethnicity. *Ultrasound Obstet Gynecol.* 2018. [epub ahead of print] [\*Association of birthweight with CPR in different ethnic subgroups]
54. Blue NR, Beddow ME, Savabi M, et al. Comparing the Hadlock fetal growth standard to the NICHD racial/ethnic standard for the prediction of neonatal morbidity and small for gestational age. *Am J Obstet Gynecol.* 2018. [epub ahead of print]
55. Reboul Q, Delabaere A, Luo ZC, Nuyt AM, Wu Y, Chauleur C, et al. Prediction of small-for-gestational-age neonate by third-trimester fetal biometry and impact of ultrasound-delivery interval. *Ultrasound Obstet Gynecol.* 2017; **49**: 372-8.
56. Chainarong N, Petpichetchian C. The relationship between intrapartum cerebroplacental ratio and adverse perinatal outcomes in term fetuses. *Eur J Obstet Gynecol Reprod Biol.* 2018; **228**: 82-86.
57. Dall'Asta A, Ghi T, Rizzo G, et al. Early labor cerebroplacental ratio assessment in uncomplicated term pregnancies and prediction of adverse perinatal outcomes: a prospective, multicentre study. *Ultrasound Obstet Gynecol.* 2018. [epub ahead of

print] **[\*\* A prospective cohort study shows the value of prelabor blind assessment with CPR in low-risk pregnancies]**

- 1  
2  
3  
4 58. Flatley C, Kumar S. Is the fetal cerebroplacental ratio better than the estimated fetal  
5 weight in predicting adverse perinatal outcomes in a low risk cohort? J Matern Fetal  
6 Neonatal Med. 2018:1-7. [epub ahead of print]  
7  
8  
9  
10  
11 59. Fratelli N, Mazzoni G, Maggi C, et al. Cerebroplacental ratio before induction of  
12 labour in normally grown fetuses at term and intrapartum fetal compromise. Eur J  
13 Obstet Gynecol Reprod Biol. 2018; **227**: 78-80.  
14  
15  
16  
17 60. Morales-Rosello J, Khalil A, Fornes-Ferrer V, et al. Accuracy of the fetal  
18 cerebroplacental ratio for the detection of intrapartum compromise in nonsmall  
19 fetuses. J Matern Fetal Neonatal Med 2018:1-11. [epub ahead of print]  
20  
21  
22  
23  
24 61. Atabay I, Kose S, Cagliyan E, et al. A prospective cohort study on the prediction of  
25 fetal distress and neonatal status with arterial and venous Doppler measurements in  
26 appropriately grown term fetuses. Arch Gynecol Obstet. 2017; **296**: 721-730.  
27  
28  
29  
30  
31 62. Bligh LN, Alsolai AA, Greer RM, et al. Cerebroplacental ratio thresholds measured  
32 within 2 weeks before birth and risk of Cesarean section for intrapartum fetal  
33 compromise and adverse neonatal outcome. Ultrasound Obstet Gynecol. 2017. **[\*\***  
34 **Prospective blinded study showing utility of CPR in AGA fetuses for the prediction of**  
35 **adverse outcomes]**  
36  
37  
38  
39  
40  
41  
42 63. Bligh LN, Alsolai AA, Greer RM, et al. Pre-labour screening for intrapartum fetal  
43 compromise in low risk pregnancies at term: cerebroplacental ratio and placental  
44 growth factor. Ultrasound Obstet Gynecol. 2017. [epub ahead of print]  
45  
46  
47  
48  
49 64. Morales-Rosello J, Khalil A, Salvi S, et al. Abnormal Middle Cerebral Artery Doppler  
50 Associates with Spontaneous Preterm Birth in Normally Grown Fetuses. Fetal Diagn  
51 Ther. 2016; **40**: 41-47.  
52  
53  
54  
55 65. Ropacka-Lesiak M, Korbela T, Swider-Musielak J, et al. Cerebroplacental ratio in  
56 prediction of adverse perinatal outcome and fetal heart rate disturbances in  
57  
58  
59  
60  
61  
62  
63  
64  
65

1  
2  
3  
4  
5  
6  
7  
8  
9  
10  
11  
12  
13  
14  
15  
16  
17  
18  
19  
20  
21  
22  
23  
24  
25  
26  
27  
28  
29  
30  
31  
32  
33  
34  
35  
36  
37  
38  
39  
40  
41  
42  
43  
44  
45  
46  
47  
48  
49  
50  
51  
52  
53  
54  
55  
56  
57  
58  
59  
60  
61  
62  
63  
64  
65

uncomplicated pregnancy at 40 weeks and beyond. Arch Med Sci. 2015; **11**: 142-148.

66. Prior T, Paramasivam G, Bennett P, et al. Are fetuses that fail to achieve their growth potential at increased risk of intrapartum compromise? Ultrasound Obstet Gynecol. 2015;46(4):460-464.

67. Migda M, Gieryn K, Migda B, Migda MS, Maleńczyk M. Utility of Doppler parameters at 36–42 weeks' gestation in the prediction of adverse perinatal outcomes in appropriate-for-gestational-age fetuses. J Ultrason 2018; **18**: 22–28.

68. MacDonald TM, Hui L, Tong S, Robinson AJ, Dane KM, Middleton AL, Walker SP. Reduced growth velocity across the third trimester is associated with placental insufficiency in fetuses born at a normal birthweight: a prospective cohort study. BMC Med. 2017 Aug 31;15(1):164.

69. Bardien N, Whitehead CL, Tong S, Ugoni A, McDonald S, Walker SP. Placental insufficiency in fetuses that slow in growth but are born appropriate for gestational age: a prospective longitudinal study. *PLoS One*. 2016; **11**, e0142788.

**Table 1.** Cerebroplacental ratio as a marker of adverse perinatal outcomes in suspected small-for-gestational age (SGA) fetuses

<b>Short-term adverse outcomes*</b>	
<b>Significant associations</b>	<b>Non-significant associations</b>
- Perinatal death † (LR+: 3.9, 95 CI: 3.4-4.5)	Neonatal brain lesions (LR+: 1.1, 95% CI: 0.8-1.4 )
NICU admission (LR+: 2.2, 95% CI: 1.9-2.5)	
Neonatal acidosis (LR+: 1.6, 95% CI: 1.3-2.0 )	
Ventilation support (LR+: 1.5, 95% CI: 1.2-1.7)	
SGA at birth (LR+: 7.4, 95% CI: 2.5-22.4 )	
Low Apgar score (<7) at 5 <sup>th</sup> minute † (LR+: 1.9, 95% CI: 1.5-2.4)	
Cesarean section for presumed fetal compromise † (LR+: 2.3, 95% CI: 2.0-2.6)	
Composite adverse perinatal outcome † (LR+: 2.5, 95% CI: 2.3-2.8)	
<b>Long-term adverse outcomes¶</b>	
<ul style="list-style-type: none"> <li>- Risk of motor and state organizational problems on Neonatal Behavioral Assessment Scale</li> <li>- Lower mean percentile scores in communication and problem solving at 2 years of age on the Ages and Stages Questionnaire</li> <li>- Lower cognitive functioning at 6-8 years regarding the following domains; verbal comprehension, perceptual reasoning, processing speed indices, full scale IQ, broad reading, written language and mathematics scores.</li> </ul>	

\*Adapted from meta-analyses of Conde-Agudelo *et al* and Vollgraff *et al* [41,42].

†Superior predictive accuracy compared to assessment with middle-cerebral artery Doppler alone according to Vollgraff *et al* [42].

¶Adapted from meta-analysis of Meher *et al.* and study of Bellido-Gonzalez *et al* [43,44].

IQ: intelligence quotient, NICU: neonatal intensive care unit, LR+: positive likelihood ratio

16  
17  
18  
19  
20  
21  
22  
23  
24  
25  
26  
27  
28  
29  
30  
31  
32  
33  
34  
35  
36  
37  
38  
39  
40  
41  
42  
43  
44  
45  
46  
47  
48  
49  
50  
51  
52  
53  
54  
55  
56  
57  
58  
59  
60  
61  
62  
63  
64  
65

**Table 2.** Review of recent publications evaluating the utility of cerebroplacental ratio (CPR) in appropriate for gestational age (AGA) fetuses.

Author	Size of the study	Scan-delivery interval	Study type, CPR cut-off used	Significant findings between groups	Non-significant findings between groups
Chainarong <i>et al</i> [56].	384	~1 day (Prelabor)	Prospective cohort, blinded‡, <5th centile	Abnormal fetal heart traces (OR*: 2.99, 95% CI: 1.58-5.69), lower birth weight in grams (MD: -159 grams, 95% CI: -288.4 to -31 grams†)	Operative delivery, meconium stained liquor, NICU admission, low Apgar (<7 at 5 <sup>th</sup> minute), SGA at birth
Dall’asta <i>et al</i> [57].	562	~1 day (Prelabor)	Prospective cohort, blinded, CPR MoM <10th centile	Operative delivery for fetal distress (OR: 3.42, 95% CI: 1.33-8.04), lower birth weight in grams (MD: -137 grams, 95% CI: -249.2 to -24.6 grams), cord arterial pH <7.10 (OR: 4.20, 95% CI: 1.11-13.48), composite adverse neonatal outcome (OR: 3.21, 95% CI: 1.00-8.86) and gestational age at delivery (MD: -5 days, 95% CI: -7 to -3 days)	Operative delivery due to dystocia, labor length, birth weight percentile, SGA at birth, low Apgar (<7 at 5 <sup>th</sup> minute), cord arterial base excess>8, NICU admission or need for resuscitation
Atabay <i>et al</i> [61].	311	~1 day (Prelabor)	Prospective cohort, blinded, CPR<1.22	Operative delivery due to fetal distress (OR: 4.18, 95% CI: 1.32-12.18)	Not reported
Fratelli <i>et al</i> [59].	151	~1 day (Prelabor)	Prospective cohort, blinded, Continuous CPR without a cut-off	Not reported	Operative delivery due to distress, cord arterial pH <7.00
Morales-Rosello <i>et</i>	569	<4 weeks	Prospective cohort, CPR	Intrapartum fetal compromise (OR: 4.88, 95% CI: 2.59-9.16)	Not reported

16  
17  
18  
19  
20  
21  
22  
23  
24  
25  
26  
27  
28  
29  
30  
31  
32  
33  
34  
35  
36  
37  
38  
39  
40  
41  
42  
43  
44  
45  
46  
47  
48  
49  
50  
51  
52  
53  
54  
55  
56  
57  
58  
59  
60  
61  
62  
63  
64  
65

<i>al</i> [60].			MoM <0.6765		
Khalil <i>et al</i> [6].	6793	<2 weeks	Retrospective cohort, CPR MoM <0.6765	Operative delivery due to fetal distress (OR: 1.54, 95% CI: 1.22-1.93)	Not reported
Flatley <i>et al</i> [58].	2093	<4 weeks	Retrospective cohort, CPR <10th centile	Delivery above 40 weeks' gestation (aOR: 0.53, 95% CI: 0.31–0.91), cesarean section for fetal distress (aOR: 2.42 ,95% CI: 1.52–3.85)	Instrumental delivery, neonatal acidosis Low Apgar (<3 at 1 <sup>st</sup> minute), NICU admission, perinatal death, serious composite neonatal outcome
Bligh <i>et al</i> [63].	207	~1 to 2 weeks	Prospective cohort, blinded, CPR<20th centile	Serious composite neonatal outcome (PLR: 1.80, 95% CI: 1.16-2.80), cesarean section for fetal distress (PLR: 3.84, 95% CI: 3.04-4.86)	Not reported
Bligh <i>et al</i> [62].	437	<2 weeks	Prospective cohort, blinded, CPR<10th centile	Abnormal fetal heart rate trace (OR: 2.98 , 95% CI: 1.69-5.31), instrumental delivery due to fetal compromise (OR: 2.64, 95% CCI: 1.33-5.11), cesarean section due to fetal compromise (OR: 8.04, 95% CI: 2.73-24.53), gestational age at delivery, birthweight (median: -3 days), birth weight centile (median: -22 centile), composite adverse neonatal outcome (OR: 2.80, 95% CI: 1.48-5.21), cord blood gas abnormality (OR: 2.46, 95% CI: 1.05-6.47)	Meconium stained liquor, labor, duration, low Apgar (<7 at 5 <sup>th</sup> minute) , NICU admission
Morales-Rosello <i>et al</i> [64].	2340	Variable	Retrospective cohort, continuous CPR without a cut-off	Not reported	Preterm birth
Ropacka-Lesiak <i>et al</i> [65].	148	2 weeks	Prospective, case-control, CPR<1.1	Abnormal fetal heart rate traces (OR: 6.95, 95% CI: 3.16-15.98), meconium stained liquor (OR: 2.71, 95% CI: 1.28-5.86), arterial cord pH (mean: -0.1, 95% CI: -0.15 to -0.05), arterial cord pH <7.2 (OR: 24.27, 95% CI: 5.64-219.81), adverse neonatal	SGA at birth



16  
17  
18  
19  
20  
21  
22  
23  
24  
25  
26  
27  
28  
29  
30  
31  
32  
33  
34  
35  
36  
37  
38  
39  
40  
41  
42  
43  
44  
45  
46  
47  
48  
49  
50  
51  
52  
53  
54  
55  
56  
57  
58  
59  
60  
61  
62  
63  
64  
65

				outcome, low Apgar (<7 at 5 <sup>th</sup> minute), birth weight (mean: -329 grams, 95% CI: -520 to -137 grams)	
Prior <i>et al</i> [66].	775	<3 days	Prospective cohort, blinded, CPR MoM <0.6765	Abnormal fetal heart rate traces (OR: 3.04, 95% CI: 1.58-5.76), cesarean section due to fetal compromise (4.54, 95% CI: 2.29-8.82), meconium stained liquor (OR: 2.24, 95% CI: 0.99-4.69), fetal compromise diagnosed at any time during labor (OR: 3.29, 95% CI: 1.75-6.27), birth weight in grams (mean: -181 grams), birth weight centile (median: -9.2 centile)	Low Apgar score (<7 at 1 and 5 minute), arterial cord pH <7.20, base excess <8 mmol/L, neonatal unit admission
Prior <i>et al</i> [35].	400	<3 days	Prospective cohort, blinded, CPR <10 <sup>th</sup> centile	Abnormal fetal heart rate traces (OR: 15.44, 95% CI: 6.22-46.05), cesarean section due to fetal compromise (6.16, 95% CI: 2.79-13.39), meconium stained liquor (OR: 2.86, 95% CI: 1.16-6.63), fetal compromise diagnosed at any time during labor (OR: 5.22, 95% CI: 2.59-10.86), birth weight percentile (mean: -7 centile)	Birth weight, Low Apgar score (<7 at 1 and 5 minute), arterial cord pH <7.20, neonatal unit admission, composite neonatal outcome score
Morales-Rosello <i>et al</i> [4].	9939	<2 weeks	Retrospective cohort, continuous CPR without a cut-off	Lower birth weight centile	Not reported
Midga <i>et al</i> [67].	446	<2 weeks	Retrospective cohort, continuous CPR without a cut-off	Not reported	Low Apgar score (<7 at 5 minute), operative delivery
MacDonald <i>et al</i> [68].	308	~1 month	Prospective cohort, blinded, CPR <5 <sup>th</sup> centile	Lower estimated fetal weight growth velocity (OR: 1.02, 95% CI: 1.01-1.04)	Lower abdominal circumference growth velocity
Bardien <i>et al</i> [69].	48	~1 month	Prospective cohort,	Change in customized estimated fetal weight centile between 28 weeks' gestation and birth	Not reported

15  
16  
17  
18  
19  
20  
21  
22  
23  
24  
25  
26  
27  
28  
29  
30  
31  
32  
33  
34  
35  
36  
37  
38  
39  
40  
41  
42  
43  
44  
45  
46  
47  
48  
49  
50  
51  
52  
53  
54  
55  
56  
57  
58  
59  
60  
61  
62  
63  
64  
65

			blinded, continuous CPR without a cut-off		
--	--	--	--	--	--

\*Unadjusted odds ratios are reported for most studies.

†Confidence intervals for continuous outcomes were bootstrapped using statistics reported in respective articles

‡Blinding indicates attending physician and/or labor management team were blinded to the Doppler findings

MoM: multiple of median, MD: mean difference, OR: odds ratio, PLR: positive likelihood ratio, aOR: adjusted odds ratio, NICU: neonatal intensive care unit, SGA: small-for-gestational age, CI: confidence intervals

## Figure legends

**Figure 1.** Ultrasound image demonstrating the umbilical artery and middle cerebral artery Doppler

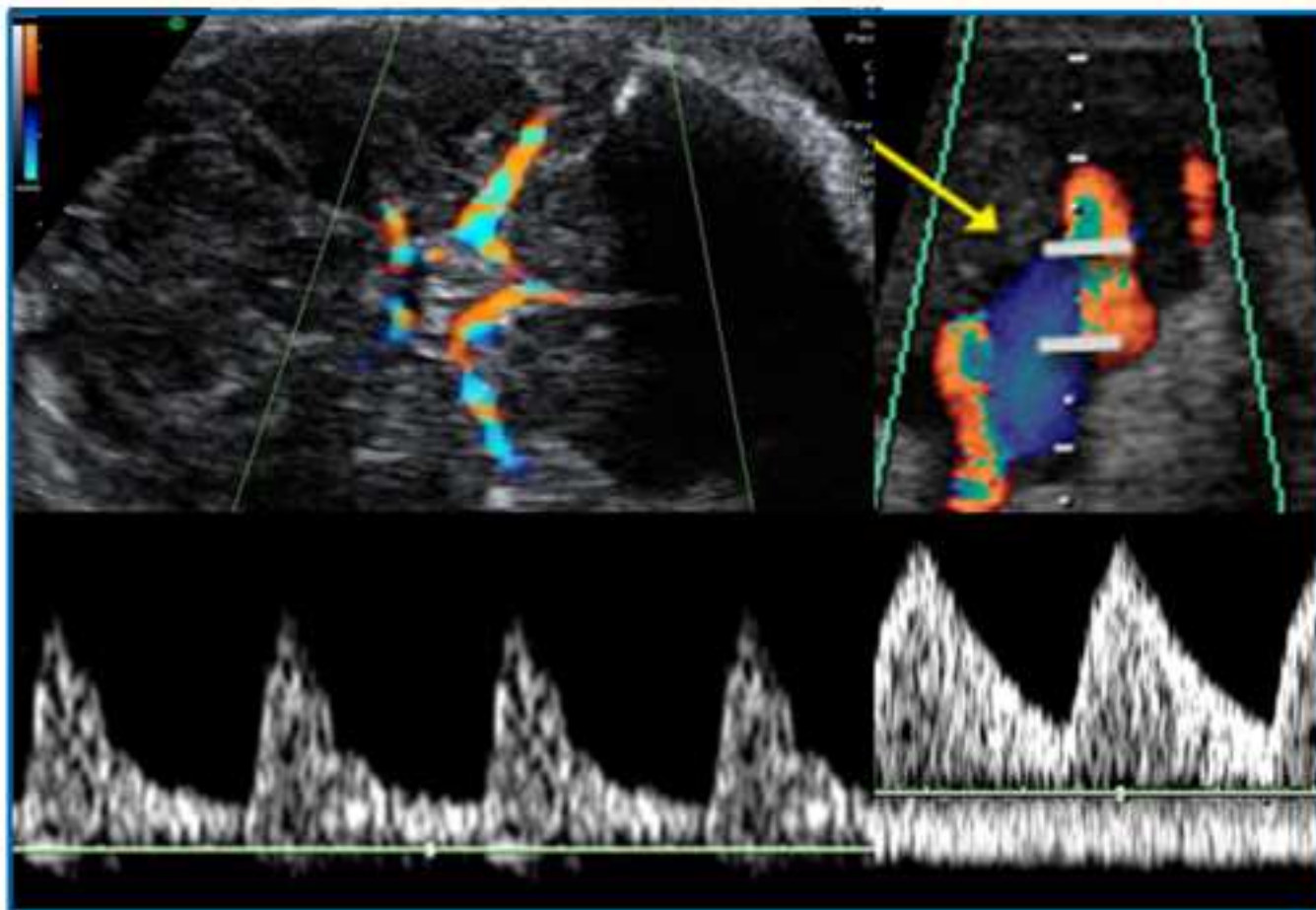
**Figure 2.** Management algorithm for suspected small-for-gestational age fetuses according to apparent peripartum risk

**Figure 3.** Infographic summarizing the utility of cerebroplacental ratio in appropriate-for-gestational age and small-for-gestational age fetuses

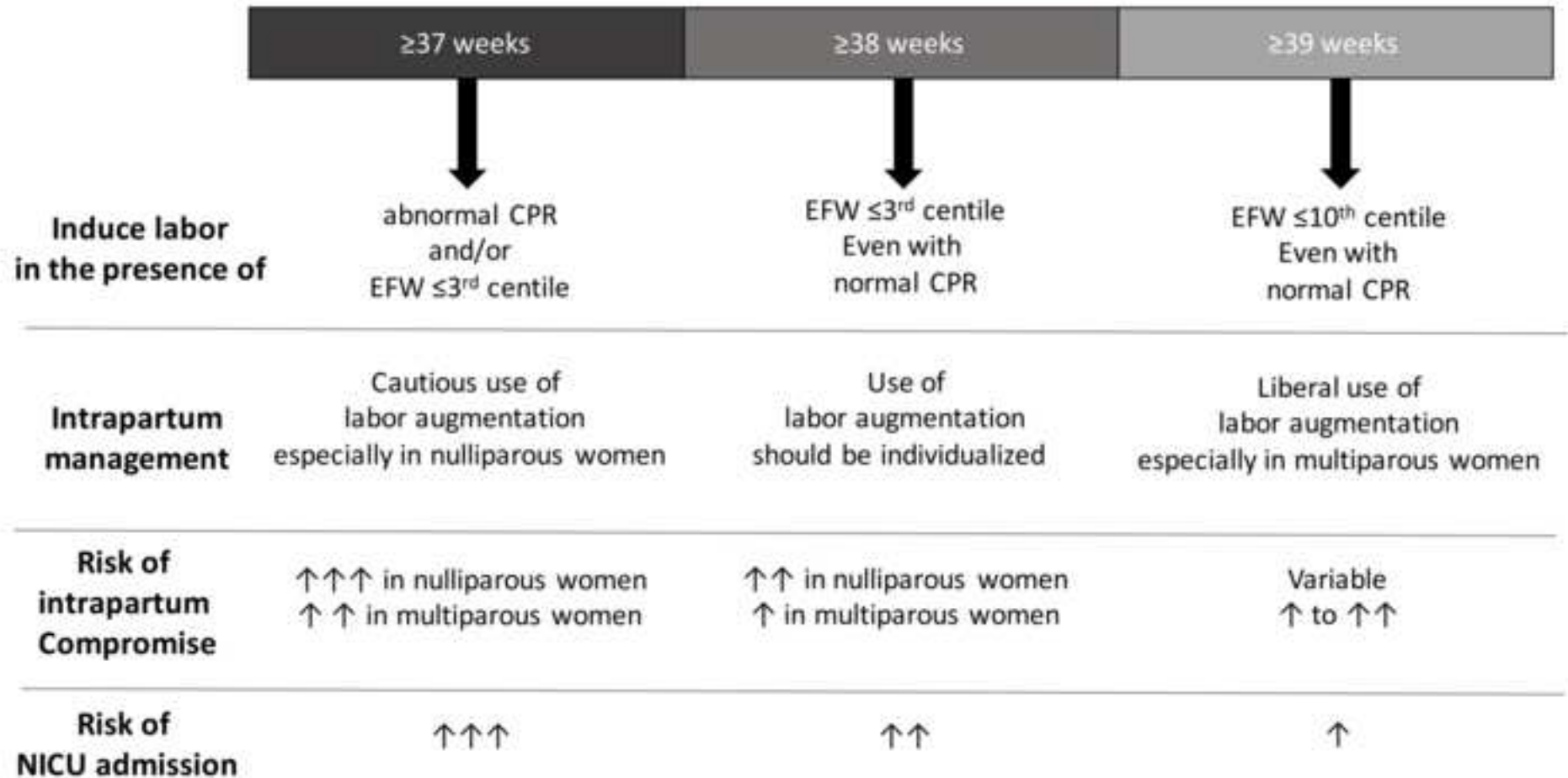
1  
2  
3  
4  
5  
6  
7  
8  
9  
10  
11  
12  
13  
14  
15  
16  
17  
18  
19  
20  
21  
22  
23  
24  
25  
26  
27  
28  
29  
30  
31  
32  
33  
34  
35  
36  
37  
38  
39  
40  
41  
42  
43  
44  
45  
46  
47  
48  
49  
50  
51  
52  
53  
54  
55  
56  
57  
58  
59  
60  
61  
62  
63  
64  
65

15  
16  
17  
18  
19  
20  
21  
22  
23  
24  
25  
26  
27  
28  
29  
30  
31  
32  
33  
34  
35  
36  
37  
38  
39  
40  
41  
42  
43  
44  
45  
46  
47  
48  
49  
50  
51  
52  
53  
54  
55  
56  
57  
58  
59  
60  
61  
62  
63  
64  
65

Ultrasound image demonstrating the umbilical artery and middle cerebral artery Doppler



## Management of suspected SGA fetuses



## AGA fetuses

### Utility of CPR



- Studies consistently report an association with increased rates of operative delivery due to presumed fetal compromise and abnormal FHR traces during labor.

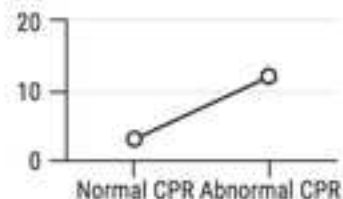
- Lower CPR values correspond to lower birth weight percentiles albeit within ranges considered to be normal (>10%).

- A weak predictor of adverse outcomes in unselected populations.

Fetuses with low CPR are at increased risk of

~10%

lower birth-weight centile



○ Risk of intrapartum compromise

intrapartum compromise

## SGA fetuses

### Utility of CPR



- Better predictor for adverse outcome in late-FGR fetuses compared to other Doppler indices.

- Risk stratification is probable to determine the timing of delivery.

- Associated with adverse outcomes including abnormal FHR traces, operative delivery, admission to NICU, long-term neurocognitive impairment.

- Randomized trials are planned to determine clinical utility.

Fetuses with low CPR are at increased risk of



perinatal death



intrapartum compromise and NICU admission



long-term neurocognitive impairment