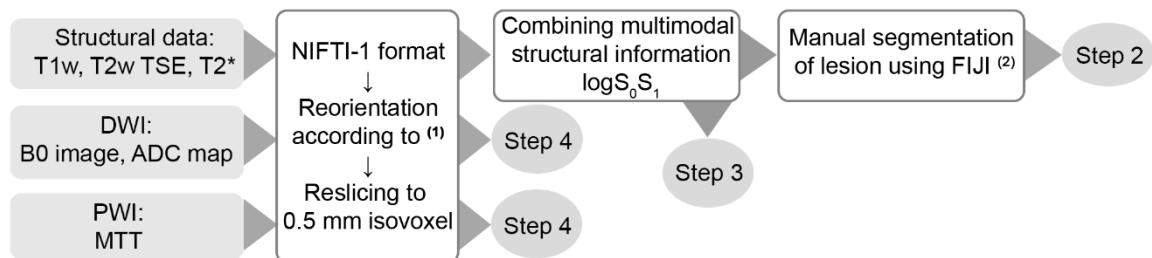


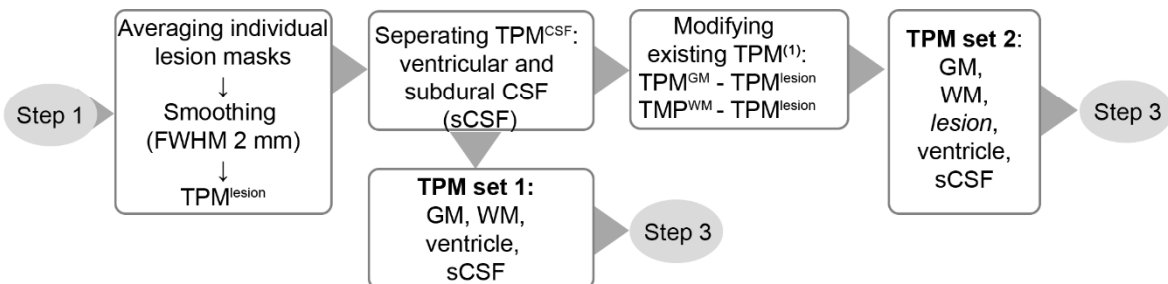
Supplementary Material and Methods

Supplementary Figures

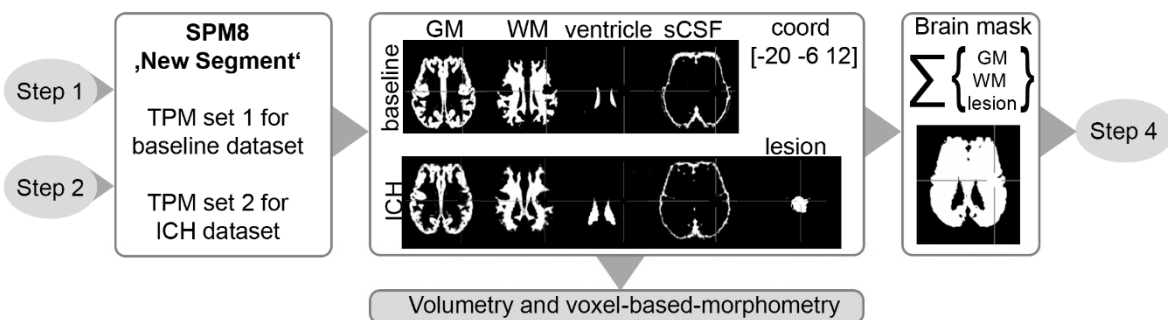
Step 1 - Initial processing



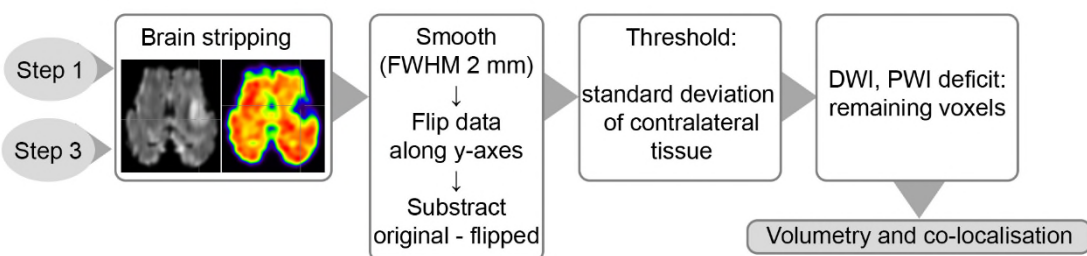
Step 2 - Creating TPM



Step 3 - Automatic segmentation (SPM8)



Step 4 - Diffusion and perfusion deficit



Supplementary Figure 1: Image processing scheme.

Supplementary Tables

Supplementary Table 1: Anesthetic protocol

Medication	Manufacture	Application route	Dose	Time of application	duration
<i>Induction of anesthesia</i>					
2% xylazine hydrochloride (Xylazin [®])	Ceva Sante Animal	i.v. bolus	0.1 mg x kg ⁻¹	prior to anesthesia	single injection
ketamine hydrochloride (Ketamin [®])	Medistar	i.v. bolus	4 mg x kg ⁻¹	prior to anesthesia	single injection
diazepam (Faustan [®])	Temmler Pharma	i.v. bolus	0.2 mg x kg ⁻¹	prior to surgery	single injection
<i>Analgesia</i>					
buprenorphine (Temgesic [®])	RB Pharmaceu- ticals	i.m.	0.01 mg x kg ⁻¹	prior to anesthesia	single injection
<i>Inhalation anesthesia</i>					
isoflurane	CP Pharma	ventilation	1.5 to 2.0%	during surgery	up to 5 hours
oxygen	Linde Medical Gases	ventilation	20 to 40%	during surgery	up to 5 hours
<i>Hydration</i>					
Ringer-Lactate	Braun Melsungen	i.v. infusion	3 mL x kg ⁻¹ x h ⁻¹	during surgery	up to 4 hours
<i>Sacrifice (during anesthesia)</i>					
pentobarbital (Eutha77 [®])	Veterinaria	i.v. bolus	80 mg x kg ⁻¹	prior to decapitation	single injection

Supplementary Table 2: Hemogram

Parameter	Unit	Value mean±sd (min-max)	Reference value
Leukocytes	G/L	6.0±1.7 (3.6-9.4)	5 - 11
Erythrocytes	T/L	10.5±1.0 (8.8-12.3)	7 - 11
Hemoglobin	mmol/L	7.0±0.9 (5.9-8.1)	5.5 – 9.3
Hematokrit	L/L	0.30±0.05 (0.25-0.42)	0.27 – 0.40
MCV	fl	28.8±4.9 (24.8-42.0)	28 - 40
MCH	fmol	0.7±0.1 (0.6-0.8)	0.6 – 0.8
MCHC	mmol/L	23.7±1.7 (19.3-25.7)	19 - 23
Platelets	G/L	609±145 (275-819)	
Basophils	%	0.3±0.9 (0.0-3.0)	0 - 3
Eosinophils	%	2.0±1.8 (0.0-5.0)	0 - 10
Polymorphnuclear Neutrophils	%	40.60±6.87 (32.0-50.0)	10 - 50
Lymphocytes	%	53.5±7.4 (45.0-64.0)	40 - 75
Monocytes	%	3.6±2.0 (1.0-7.0)	0 - 7

Supplementary Table 3: Baseline corrected monitoring values (mean±SD)

Parameter	ICH induction (Δmean±sd)	after ICH (Δmean±sd)
T in °C	4x10 ⁻³ ±8x10 ⁻³	9x10 ⁻³ ±3x10 ⁻²
SPO ₂ in %	0.6±1.2	0.5±1.2
HR in bpm	0.2±0.6	1.1±1.2 *
<i>ABP in mmHg</i>		
systolic	-0.9±2.6	-0.9±2.8
diastolic	-1.8±3.5	-2.1±2.4 *
mean pressure	-2.1±4.1	1.8±2.8
amplitude	0.7±0.8	1.3±0.9 **
ICP in mmHg	3.8±1.4*	6.4±1.8**

T – Temperature; SPO₂ - oxygen saturation; HR - hear rate; ABP - arterial blood pressure; ICP - intracranial pressure; Δvalues - differences to baseline of the respective parameter; Significance level: * - p < 0.05; ** - p < 0.01; *** - p<0.001

Supplementary Table 4: PWI and DWI deficit volumes in mL (mean±sd/ quartile I-III)

Lesion/deficit volume	Volume in mL
L ^{logS0S1}	2.1±0.76 1.8-2.2
L ^{ADC}	0.6±0.36/0.4-0.9
L ^{DIFF}	1.2±0.55/1.1-1.5
L ^{DWI}	1.9±0.73/1.5-2.2
L ^{PWI}	3.6±0.85/3.0-4.4

L^{logS0S1} – lesion volume (logS₀S₁); L^{ADC} – volume of apparent diffusion; L^{DIFF} – volume of free diffusion; L^{DWI} – sum L^{ADC} and L^{DIFF}; L^{PWI} – volume of mean-transit-time delay