



OPEN ACCESS

ORIGINAL ARTICLE

Tumour risks and genotype–phenotype correlations associated with germline variants in succinate dehydrogenase subunit genes *SDHB*, *SDHC* and *SDHD*

Katrina A Andrews,¹ David B Ascher,^{2,3} Douglas Eduardo Valente Pires,^{2,4} Daniel R Barnes,⁵ Lindsey Vialard,⁶ Ruth T Casey,¹ Nicola Bradshaw,⁷ Julian Adlard,⁸ Simon Aylwin,⁹ Paul Brennan,¹⁰ Carole Brewer,¹¹ Trevor Cole,⁶ Jackie A Cook,¹² Rosemarie Davidson,⁷ Alan Donaldson,¹³ Alan Fryer,¹⁴ Lynn Greenhalgh,¹⁴ Shirley V Hodgson,¹⁵ Richard Irving,¹⁶ Fiona Lalloo,¹⁷ Michelle McConachie,¹⁸ Vivienne P M McConnell,¹⁹ Patrick J Morrison,¹⁹ Victoria Murday,⁷ Soo-Mi Park,²⁰ Helen L Simpson,²¹ Katie Snape,¹⁵ Susan Stewart,⁶ Susan E Tomkins,¹³ Yvonne Wallis,⁶ Louise Izatt,²² David Goudie,¹⁸ Robert S Lindsay,²³ Colin G Perry,²³ Emma R Woodward,¹⁷ Antonis C Antoniou,⁵ Eamonn R Maher^{1,21}

► Additional material is published online only. To view please visit the journal online (<http://dx.doi.org/10.1136/jmedgenet-2017-105127>).

For numbered affiliations see end of article.

Correspondence to

Professor Eamonn R Maher, Department of Medical Genetics, University of Cambridge, Cambridge CB2 0QQ, UK; erm1000@medschl.cam.ac.uk

Received 23 October 2017

Revised 5 January 2018

Accepted 8 January 2018

ABSTRACT

Background Germline pathogenic variants in *SDHB/SDHC/SDHD* are the most frequent causes of inherited pheochromocytomas/paragangliomas. Insufficient information regarding penetrance and phenotypic variability hinders optimum management of mutation carriers. We estimate penetrance for symptomatic tumours and elucidate genotype–phenotype correlations in a large cohort of *SDHB/SDHC/SDHD* mutation carriers. **Methods** A retrospective survey of 1832 individuals referred for genetic testing due to a personal or family history of pheochromocytoma/paraganglioma. 876 patients (401 previously reported) had a germline mutation in *SDHB/SDHC/SDHD* (n=673/43/160). Tumour risks were correlated with in silico structural prediction analyses.

Results Tumour risks analysis provided novel penetrance estimates and genotype–phenotype correlations. In addition to tumour type susceptibility differences for individual genes, we confirmed that the *SDHD*:p.Pro81Leu mutation has a distinct phenotype and identified increased age-related tumour risks with highly destabilising *SDHB* missense mutations. By Kaplan-Meier analysis, the penetrance (cumulative risk of clinically apparent tumours) in *SDHB* and (paternally inherited) *SDHD* mutation-positive non-probands (n=371/67 with detailed clinical information) by age 60 years was 21.8% (95% CI 15.2% to 27.9%) and 43.2% (95% CI 25.4% to 56.7%), respectively. Risk of malignant disease at age 60 years in non-proband *SDHB* mutation carriers was 4.2% (95% CI 1.1% to 7.2%). With retrospective cohort analysis to adjust for ascertainment, cumulative tumour risks for *SDHB* mutation carriers at ages 60 years and 80 years were 23.9% (95% CI 20.9% to 27.4%) and 30.6% (95% CI 26.8% to 34.7%).

Conclusions Overall risks of clinically apparent tumours for *SDHB* mutation carriers are substantially lower than initially estimated and will improve counselling of affected families. Specific genotype–tumour risk associations provides a basis for novel investigative strategies into succinate dehydrogenase-related

mechanisms of tumourigenesis and the development of personalised management for *SDHB/SDHC/SDHD* mutation carriers.

INTRODUCTION

The succinate dehydrogenase (SDH) enzyme complex comprises four subunits (A–D), localises to the inner mitochondrial membrane and catalyses the oxidation of succinate during the Krebs cycle. Three subunit genes (*SDHB/SDHC/SDHD*) are among the most important susceptibility genes for the neuroendocrine tumours head and neck paraganglioma (HNPGL) and pheochromocytoma and paraganglioma (PPGL).^{1,2} HNPGLs are derived from parasympathetic-derived ganglia, whereas PPGLs are derived from sympathetic ganglia and usually secrete catecholamines. HNPGL and PPGL have a strong genetic basis, with approximately 40% being associated with a germline mutation in one of at least 15 genes.³

Since the identification of the role of *SDHB/SDHC/SDHD* in inherited PPGL/HNPGL at the start of this century,^{4–6} testing for germline mutations in these genes has become part of standard medical practice. As testing became more widespread, it was revealed that mutations in *SDHC* and *SDHD* were associated with a higher risk of HNPGL than PPGL, with the reverse for *SDHB*.^{7–10} *SDHB* mutations are associated with a higher risk of malignancy and renal carcinoma than mutations in other subunits.^{7,10,11} Initially, the penetrance of *SDHB* mutations was estimated at ~70%–80%, and intensive surveillance programmes were recommended, but more recent estimates suggest the tumour risk is <50% in non-probands.^{7,12–14} The combination of malignancy risk with incomplete penetrance makes designing an optimal surveillance programme for asymptomatic *SDHB* mutation carriers difficult. More accurate predictions



To cite: Andrews KA, Ascher DB, Pires DEV, et al. *J Med Genet* Epub ahead of print: [please include Day Month Year]. doi:10.1136/jmedgenet-2017-105127

of life-time tumour risks and identification of subgroups with higher or lower risks would enable the development of personalised management and surveillance strategies.

Previously we reported the mutation spectrum and genotype-phenotype correlations in 358 patients with germline mutations in *SDHB* and *SDHD*.¹⁰ Here we report the results of analysis on an expanded cohort of germline *SDHB/SDHC/SDHD* mutation carriers and stratify missense mutations according to predicted effects on structure and function. We provide more accurate estimates of tumour-specific risks, confirm the mutation-specific phenotype of the *SDHD* p.Pro81Leu mutation and identify a novel candidate genotype-phenotype association of *SDHB* missense mutations with effects on *SDHB* protein stability.

MATERIALS AND METHODS

Patient cohort

The study sample consisted of men and women referred for *SDHB/SDHC/SDHD* mutation analysis in National Health Service diagnostic laboratories for a personal or family history of PPLG/HNPGL. Carriers of pathogenic mutations in other genes were excluded from this study. Clinical information was collected via a standard pro forma (see online supplementary figure 1), or clinical records, for research studies or a service evaluation study. Non-probands (those tested after a *SDHB/SDHC/SDHD* mutation was detected in their relative) were included except those with maternally inherited *SDHD* mutations who, because of a parent of origin effect, will have a tumour penetrance more similar to that of the general population.¹⁵ One proband, described previously,¹⁶ had a maternally inherited *SDHD* mutation. Affected individuals were diagnosed by routine clinical investigations. The work described was performed in accordance with the Declaration of Helsinki. All participants gave informed consent for genetic testing. The service evaluation study was approved by Birmingham Women's Hospital R&D Office. A subgroup of patients (n=401) have been described previously^{6 10 14 17-19} with 358 included in Rickerts *et al.*¹⁰ We refer to patients as having 'detailed clinical information' if we have received a clinical information proforma or have access to their records to ascertain the presence or absence, and age of onset, of tumours. Patients without detailed clinical information were those for whom we had the genetic test report but insufficient extra information to include them in the penetrance analyses (they were censored at age zero). Clinical information was collected at the time of genetic testing and prior to baseline biochemical and imaging screening of asymptomatic gene carriers.

Molecular genetic analysis

SDHB/SDHC/SDHD mutations were detected by Sanger sequencing, next-generation sequencing assay²⁰ or multiplex ligation-dependent probe amplification (MLPA) analysis (SALSA MLPA Kit P226; MRC-Holland, Amsterdam, The Netherlands) (details available on request).

SDHB/SDHC/SDHD sequence variants were classified as pathogenic/benign/variants of uncertain significance (VUS) by the reporting diagnostic laboratory. As methods of variant classification were not uniform between laboratories, all classifications were compared with the ClinVar classification,²¹ where available. Where there was a disagreement between the local laboratory classification and the ClinVar classification, the variant was described as VUS. This method was chosen to minimise the chance of underestimating penetrance of tumours because of inclusion of families without a true pathogenic variant. Tumour

risks and genotype-phenotype correlations were calculated in individuals with variants considered to be pathogenic or likely pathogenic by the diagnostic laboratory (65 probands with a VUS were excluded from penetrance calculations).

In silico protein structure analysis

The DUET and mCSM-PPI scoring systems²²⁻²⁴ were used to predict the structural consequences of missense mutations on protein stability and protein-protein affinity, respectively, using the models of *SDHB*, *SDHD* and the succinate complex (see supplementary information).

Statistical analysis

Tumour risks were estimated by Kaplan-Meier analysis (*SDHB/SDHD/SDHC*). All statistical tests were performed using the programming language R unless otherwise stated.²⁵ The 'survfit' function from the survival package was used for Kaplan-Meier survival analysis and penetrance calculations. The log-rank test was used to compare survival distributions between cohorts of different genotypes. To account for the non-random ascertainment of study participants with respect to their disease status, separate penetrance estimation analyses were carried out, in which we modelled the retrospective likelihood of the observed mutation status conditional on the disease phenotypes²⁶ (online supplementary material). The analysis was carried out in the pedigree analysis software MENDEL.²⁷ The retrospective cohort analysis was not used for *SDHD*, because it does not address the fact that the ascertainment of *SDHD* mutation carriers considered the parental origin of the mutation. The 0.05 level of significance was used for all tests, with Bonferroni correction for multiple comparisons where stated. All tests were two sided.

RESULTS

Spectrum of *SDHB/SDHC/SDHD* mutations

Of 1832 patients referred for genetic testing due to a personal or family history of PPLG/HNPGL, 1093 were probands and 1227 had detailed clinical information available. Eight hundred seventy-six had a mutation in either *SDHB* (n=673, probands=275), *SDHC* (n=43, probands=26) or *SDHD* (n=160, probands=90) (see online supplementary figure 2).

Copy number abnormalities (CNAs)

Forty-five probands had MLPA-detected single/multiple exon deletions or duplications in *SDHB* (n=36), *SDHC* (n=6) or *SDHD* (n=3) (see online supplementary table 1). Three of 36 *SDHB* probands with a CNA had a single or multiexon duplication. The proportion of *SDHB* CNAs that were whole gene deletions (5.6%), exon 1 deletions (49%) and exon 3 deletions (14%) was similar to that in other published cohorts,^{8 28 29} except for cohorts from the Netherlands where exon 3 deletions predominate.^{30 31} We found 83% (5/6) of *SDHC* CNAs were exon 6 deletions, and all three *SDHD* CNAs in our series were exon 4 deletions.

Intragenic mutations

Three hundred and forty-four probands and 436 of their relatives harboured an intragenic mutation in *SDHB/SDHC/SDHD* (table 1). Forty-five intragenic mutations in 134 probands were reported previously.¹⁰ The ratio of mutation classes among probands was similar to that reported previously¹⁰ (44% missense, 15% nonsense, 13% splice-site, 15% frameshift, 0.5% inframe deletions and 12% large CNAs). There were a

Table 1 List of all intragenic mutations found in *SDHB*, *SDHC* and *SDHD*

Gene	Mutation	Amino acid change	No. of probands	LOVD ID ⁵⁹ or reference
<i>SDHB</i>	c.17_42dup26	p.Ala15ProfsX4	1	Jafri <i>et al</i> ¹⁴
<i>SDHB</i>	c.72+1G>A	Splice	3	LOVD ID SDHB_00171
<i>SDHB</i>	c.72+1G>C	Splice	1	Ricketts <i>et al</i> ¹⁰
<i>SDHB</i>	c.72+1G>T	Splice	36	LOVD ID SDHB_000065
<i>SDHB</i>	c.79C>T	p.Arg27X	7	LOVD ID SDHB_000006
<i>SDHB</i>	c.88delC	p.Gln30ArgfsX47	7	LOVD ID SDHB_000017
<i>SDHB</i>	c.118A>G	p.Lys40Glu	8	LOVD ID SDHB_000018
<i>SDHB</i>	c.136C>T	p.Arg46X	11	LOVD ID SDHB_000021
<i>SDHB</i>	c.137G>A	p.Arg46Gln	22	LOVD ID SDHB_000022
<i>SDHB</i>	c.141G>A	p.Trp47X	1	LOVD ID SDHB_000023
<i>SDHB</i>	c.166_170delCCCTCA	p.Pro56TyrfsX5	2	LOVD ID SDHB_000025
<i>SDHB</i>	c.268C>T	p.Arg90X	8	LOVD ID SDHB_000001
<i>SDHB</i>	c.282_283insCTTA	p.Glu95LeufsX25	3	LOVD ID SDHB_000206
<i>SDHB</i>	c.286+2T>A	Splice	1	LOVD ID SDHB_000092
<i>SDHB</i>	c.286G>A	p.Gly96Ser	6	LOVD ID SDHB_000207
<i>SDHB</i>	c.287-1G>C	Splice	1	LOVD ID SDHB_000040
<i>SDHB</i>	c.292T>C	p.Cys98Arg	1	LOVD ID SDHB_000068
<i>SDHB</i>	c.296G>A	p.Gly99Asp	1	LOVD ID SDHB_000070
<i>SDHB</i>	c.297delC	p.Ser100LeufsX4	1	LOVD ID SDHB_000208
<i>SDHB</i>	c.298T>C	p.Ser100Pro	4	LOVD ID SDHB_000089
<i>SDHB</i>	c.302G>A	p.Cys101Tyr	1	LOVD ID SDHB_000041
<i>SDHB</i>	c.311delAinsGG	p.Asn104ArgfsX15	4	LOVD ID SDHB_000071
<i>SDHB</i>	c.325_335del11	p.Asn109LeufsX6	1	LOVD ID SDHB_000209
<i>SDHB</i>	c.338G>A	p.Cys113Tyr	3	LOVD ID SDHB_000210
<i>SDHB</i>	c.339_352del14	p.Cys113X	1	Not described
<i>SDHB</i>	c.343C>T	p.Arg115X	6	LOVD ID SDHB_000042
<i>SDHB</i>	c.379dupA	p.Ile127AsnfsX28	7	LOVD ID SDHB_000211
<i>SDHB</i>	c.380T>A	p.Ile127Asn	2	LOVD ID SDHB_000043
<i>SDHB</i>	c.380T>G	p.Ile127Ser	21	LOVD ID SDHB_000072
<i>SDHB</i>	c.418G>T	p.Val140Phe	3	LOVD ID SDHB_000095
<i>SDHB</i>	c.423+1G>A	Splice	3	LOVD ID SDHB_000047
<i>SDHB</i>	c.445C>T	p.Gln149X	1	Not described
<i>SDHB</i>	c.502dupC	p.Gln168ProfsX11	1	LOVD ID SDHB_000075
<i>SDHB</i>	c.526G>T	p.Glu176X	1	LOVD ID SDHB_000212
<i>SDHB</i>	c.552C>G	p.Tyr184X	1	Not described
<i>SDHB</i>	c.567_568delTG	p.Ala190LeufsX3	1	Not described
<i>SDHB</i>	c.587G>A	p.Cys196Tyr	7	LOVD ID SDHB_000054
<i>SDHB</i>	c.590C>G	p.Pro197Arg	11	LOVD ID SDHB_000002
<i>SDHB</i>	c.591delC	p.Ser198AlafsX22	1	LOVD ID SDHB_000003
<i>SDHB</i>	c.600G>T	p.Trp200Cys	17	LOVD ID SDHB_000098
<i>SDHB</i>	c.642+1G>T	Splice	1	Meyer-Rochow <i>et al</i> ⁶⁰
<i>SDHB</i>	c.649C>T	p.Arg217Cys	1	LOVD ID SDHB_000086
<i>SDHB</i>	c.650G>T	p.Arg217Leu	1	LOVD ID SDHB_000159
<i>SDHB</i>	c.660dupT	p.Asp221X	1	LOVD ID SDHB_000057
<i>SDHB</i>	c.685_686ins13	p.Glu229AlafsX31	1	LOVD ID SDHB_000213
<i>SDHB</i>	c.688C>G	p.Arg230Gly	1	LOVD ID SDHB_000100
<i>SDHB</i>	c.688C>T	p.Arg230Cys	1	LOVD ID SDHB_000058
<i>SDHB</i>	c.689G>A	p.Arg230His	5	LOVD ID SDHB_000108
<i>SDHB</i>	c.724C>T	p.Arg242Cys	4	LOVD ID SDHB_000060
<i>SDHB</i>	c.725G>A	p.Arg242His	2	LOVD ID SDHB_000004
<i>SDHB</i>	c.745_748dupTGCA	p.Thr250MetfsX7	1	Jafri <i>et al</i> ¹⁴
<i>SDHC</i>	c.1A>T	Start codon mutation	3	LOVD ID SDHC_000006
<i>SDHC</i>	c.43C>T	p.Arg15X	1	LOVD ID SDHC_000013
<i>SDHC</i>	c.77+2dupT	Splice	1	Buffet <i>et al</i> ²⁸
<i>SDHC</i>	c.148C>T	p.Arg50Cys	1	LOVD ID SDHC_000024
<i>SDHC</i>	c.345dupA	p.Ala116SerfsX2	1	Not described
<i>SDHC</i>	c.378T>G	p.Tyr126X	1	Not described
<i>SDHC</i>	c.380A>G	p.His127Arg	7	LOVD ID SDHC_000055
<i>SDHC</i>	c.397C>T	p.Arg133X	5	LOVD ID SDHC_000015
<i>SDHD</i>	c.1A>G	Start codon mutation	1	LOVD ID SDHD_000021

Continued

Table 1 Continued

Gene	Mutation	Amino acid change	No. of probands	LOVD ID ⁵⁹ or reference
<i>SDHD</i>	c.14G>A	p.Trp5X	2	LOVD ID SDHD_000026
<i>SDHD</i>	c.33C>A	p.Cys11X	1	LOVD ID SDHD_000027
<i>SDHD</i>	c.36dupT	p.Ala13CysfsX56	1	Not described
<i>SDHD</i>	c.47_52+1 del7	Splice	2	Not described
<i>SDHD</i>	c.53dupC	p.Leu19SerfsX50	1	Not described
<i>SDHD</i>	c.57delG	p.Leu20CysfsX66	1	LOVD ID SDHD_000080
<i>SDHD</i>	c.64C>T	p.Arg22X	2	LOVD ID SDHD_000012
<i>SDHD</i>	c.91dupA	p.Ile31AsnfsX38	1	Not described
<i>SDHD</i>	c.94_95delTC	p.Ala33IlefsX35	3	LOVD ID SDHD_000017
<i>SDHD</i>	c.98_108del11	p.Ala33GlyfsX32	1	Not described
<i>SDHD</i>	c.116_117insGATA	p.Pro41TyrfsX29	1	Not described
<i>SDHD</i>	c.144_145dupCA	p.Ile49ThrfsX38	3	Not described
<i>SDHD</i>	c.169+1G>A	Splice	2	LOVD ID SDHD_000132
<i>SDHD</i>	c.171delT	p.Gly58AlafsX28	1	Not described
<i>SDHD</i>	c.191_192delTC	p.Leu64ProfsX4	4	LOVD ID SDHD_000013
<i>SDHD</i>	c.205G>T	p.Glu69X	1	Not described
<i>SDHD</i>	c.242C>T	p.Pro81Leu	39	LOVD ID SDHD_000003
<i>SDHD</i>	c.242delC	p.Pro81ArgfsX5	1	LOVD ID SDHD_000151
<i>SDHD</i>	c.274G>T	p.Asp92Tyr	3	LOVD ID SDHD_000004
<i>SDHD</i>	c.276_278delCTA	p.Tyr93del	2	LOVD ID SDHD_000038
<i>SDHD</i>	c.296delT	p.Leu99ProfsX36	9	LOVD ID SDHD_000040
<i>SDHD</i>	c.325C>T	p.Gln109X	2	LOVD ID SDHD_000046
<i>SDHD</i>	c.341A>G	p.Tyr114Cys	1	LOVD ID SDHD_000007
<i>SDHD</i>	c.342T>A	p.Tyr114X	2	LOVD ID SDHD_000083

The 15 mutations labelled as 'Not described' have, to the best of our knowledge, not been published elsewhere.

number of recurrent mutations, for example, *SDHB* splice-site c.72+1G>T and *SDHD* missense c.242C>T (p.Pro81Leu) mutations accounted for 20% of probands, and the 10 most common mutations accounted for 48% (see online supplementary figure 3).

Clinical presentation

Of 297 probands with a *SDHB/SDHC/SDHD* mutation and detailed clinical information, the presenting features were predominantly PPGL and HNPGL, though the frequency varied by gene (see online supplementary table 3). Three hundred and seventy-four of the 454 non-proband SDH mutation carriers with detailed clinical information were asymptomatic at testing.

Age-related tumour risks

Tumour risks were estimated by Kaplan-Meier analysis for all *SDHB/SDHD/SDHC* mutation carriers, probands only and non-probands only for *SDHD* non-proband carriers only those with paternally inherited mutations). For *SDHB*, retrospective cohort analysis was also performed using all samples combined (probands and non-probands), probands only and using non-probands only.

Kaplan-Meier analysis (and log-rank testing) of probands and non-probands (figure 1) revealed higher penetrance for symptomatic tumours in *SDHD* than in *SDHB* mutation carriers ($P=0.032$), increased age-related risk of HNPGL in *SDHD* than *SDHB* mutation carriers ($P<0.0001$) and higher risk of PPGL in *SDHB* than *SDHD* ($P=0.00019$). *SDHB* carriers were more likely to develop malignant disease ($P=0.0043$). These findings remained significant when the previously reported 358 patients¹⁰ were excluded from the analysis (data not shown).

In 34 *SDHC* mutation carriers with detailed clinical information, 19 were clinically affected (15 HNPGL, 3 PPGL and 1 had both HNPGL and PPGL). One patient with HNPGL had

local spread and malignant features. Age-related risks of symptomatic PPGL/HNPGL in *SDHC* were similar to that of *SDHD*. Compared with *SDHB* mutation carriers, *SDHC* carriers had a lower risk of PPGL ($P=0.02$ and $P=0.06$ before and after Bonferroni correction) and a higher risk of HNPGL ($P<0.001$ after Bonferroni correction for three comparisons, log-rank test) (figure 1).

Overall tumour risks will be inflated by including both probands and non-probands (as probands always have the disease) so we re-estimated the cumulative risks in non-probands only. Using Kaplan-Meier analysis, the estimated risk of PPGL/HNPGL at age 60 years in *SDHB*, *SDHD* and *SDHC* mutation positive non-probands was 21.8% (95% CI 15.2% to 27.9%), 43.2% (95% CI 25.4% to 56.7%) and 25% (95% CI 0% to 57.0%), respectively. Nine non-probands (all *SDHB*) developed malignant disease, and the risk of malignant disease at age 60 years in non-proband *SDHB* mutation carriers was 4.2% (95% CI 1.1% to 7.2%).

As expected, estimates of penetrance from the retrospective cohort analysis of a combined sample of probands and non-probands were lower than the above estimates from Kaplan-Meier analysis as the former method provides some adjustment for ascertainment bias. Under the retrospective cohort analysis, the predicted penetrance of PPGL/HNPGL in *SDHB* mutation carriers (probands and non-probands) by age 60 years and age 80 years was 23.9% (95% CI 20.9% to 27.4%) and 30.6% (95% CI 26.8% to 34.7%), respectively (see figure 2), similar to the Kaplan-Meier estimates in non-probands.

Male *SDHB* mutation carriers have a higher age-related penetrance of PPGL/HNPGL ($P=0.0034$) and PPGL ($P=0.0079$), compared with women (see online supplementary figure 4), as calculated by Kaplan-Meier analysis and log-rank testing.

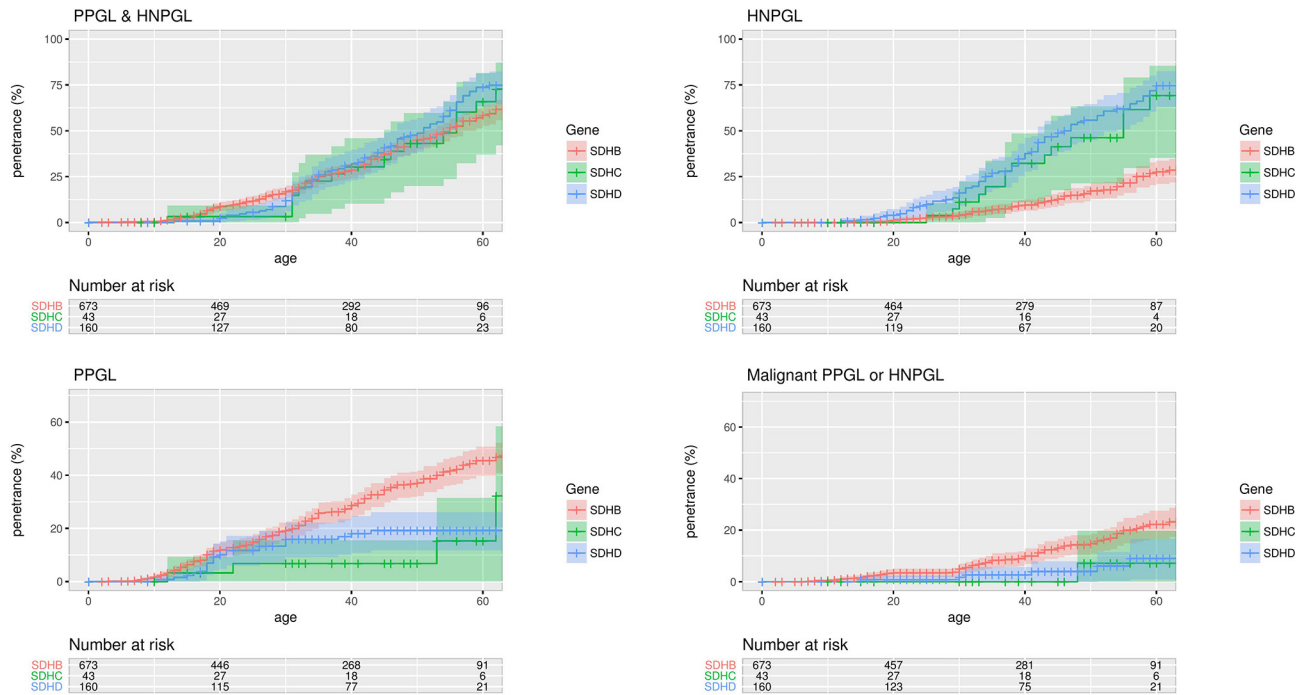


Figure 1 Penetrance of for clinically diagnosed disease in proband and non-proband *SDHB*, *SDHC* and *SDHD* mutation carriers with 95% CI shaded. HNPGL, head and neck paraganglioma; PPGL, pheochromocytoma and paraganglioma.

Other tumours

Previously,¹⁰ we reported 12/358 patients had renal tumours (11 *SDHB* and 1 *SDHD*), and the updated cohort contains an additional four cases (all *SDHB*). Of 751 patients with detailed clinical information (584 *SDHB*, 33 *SDHC* and 134 *SDHD*), 15 (2.6%) *SDHB* carriers and 1 (0.7%) *SDHD* carrier had a renal tumour. The risk of developing a renal tumour by age 60 years in *SDHB* mutation carriers was 4.2% (95% CI 0.46% to 7.8%) by Kaplan-Meier analysis of non-probands, 4.71% (95% CI 1.65% to 7.7%) by Kaplan-Meier analysis of all *SDHB* mutation carriers and 5.6%/3.2% (male/female) by retrospective cohort analysis of all *SDHB* mutation carriers. No further thyroid tumours were found beyond the three described previously in *SDHB* mutation

carriers,¹⁰ giving an estimated penetrance of thyroid tumours by age 60 years of 1.5% (95% CI 0.0% to 3.1%) (calculated by Kaplan-Meier analysis of all *SDHB* mutation carriers). Other rare tumours included: (A) *SDHB* carriers: pituitary adenoma, parathyroid adenoma and pulmonary carcinoid tumour; (B) *SDHC*: pituitary adenoma, gastrointestinal stromal tumour (GIST); and (C) *SDHD*: a pituitary tumour.

Genotype–phenotype correlations

Structural prediction analysis

SDHB and *SDHD* missense mutations were analysed using DUET²⁴ to predict their effect on protein stability and

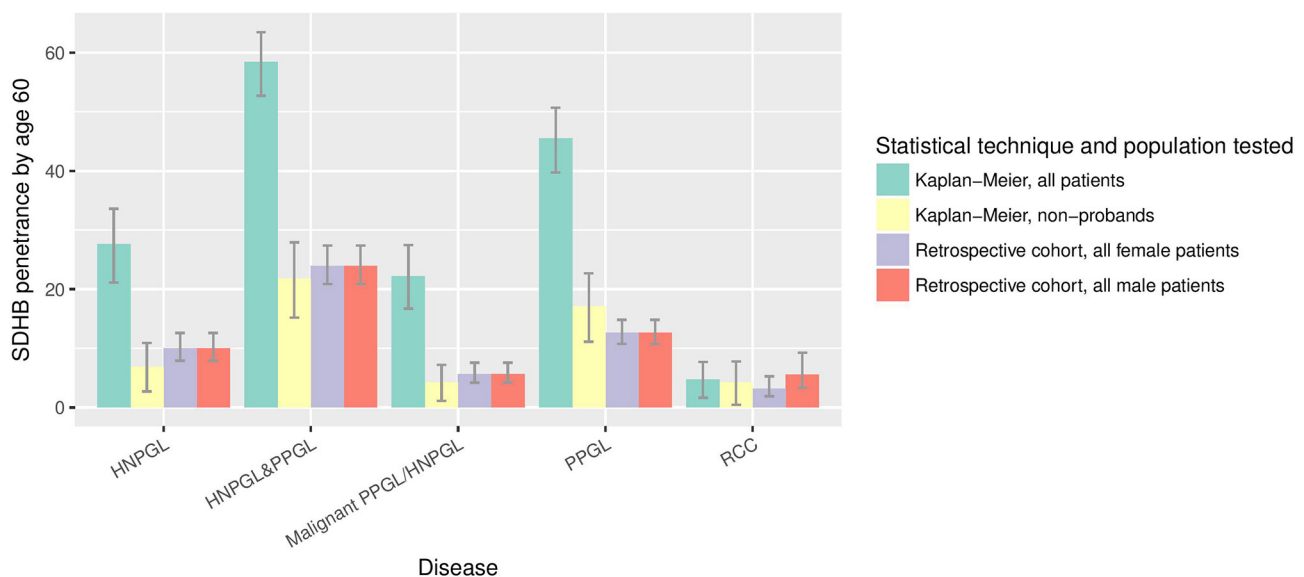


Figure 2 Penetrance of clinical disease in *SDHB* mutation carriers by age 60 years, as calculated by different statistical techniques and in different subpopulations. HNPGL, head and neck paraganglioma; PPGL, pheochromocytoma and paraganglioma; RCC, renal cell carcinoma.

Cancer genetics

Table 2 DUET score for all *SDHB* and *SDHD* missense mutations described in this cohort and for rare missense variants with no or unknown pathogenicity

Mutation	Allele frequency	mCSM stability (Kcal/mol)	DUET (Kcal/mol)	Predicted effect
SDHB				
p.Lys40Glu	Unknown	-1.741	-1.774	Destabilises protomer and complex
p.Arg46Gln	0.000008238	-0.997	-1.02	Destabilises protomer
p.Gly96Ser	0.000008381	-1.024	-1.09	Destabilises protomer; positive phi glycine; affect metal binding
p.Cys98Arg	Unknown	0.217	0.316	Affect metal binding; destabilise complex
p.Gly99Asp	Unknown	-0.989	-1.216	Destabilises protomer and complex; affect metal binding
p.Ser100Pro	Unknown	-0.226	-0.368	Affect metal binding; destabilise complex
p.Cys101Tyr	Unknown	-1.06	-1.651	Destabilises protomer; affect metal binding
p.Cys113Tyr	Unknown	-0.974	-1.467	Destabilises protomer and complex; affect metal binding
p.Ile127Asn	Unknown	-3.088	-3.213	Destabilises protomer. Mildly destabilises complex
p.Ile127Ser	Unknown	-3.669	-3.856	Destabilises protomer
p.Val140Phe	Unknown	-1.233	-1.353	Destabilises protomer. Mildly destabilises complex
p.Cys196Tyr	Unknown	-1.407	-1.77	Destabilises protomer and complex; affect metal binding
p.Pro197Arg	Unknown	-0.954	-0.784	Destabilises protomer; mildly destabilises complex; affect metal binding; loss of conformational restraint
p.Trp200Cys	Unknown	-1.442	-1.205	Destabilises protomer and complex
p.Arg217Cys	Unknown	-1.916	-1.948	Destabilises protomer and complex
p.Arg217Leu	Unknown	-1.031	-0.879	Destabilises protomer and complex
p.Arg230Gly	Unknown	-1.848	-2.45	Destabilises protomer and complex
p.Arg230Cys	0.000008252	-1.739	-1.836	Destabilises protomer and complex
p.Arg230His	Unknown	-1.903	-2.133	Destabilises protomer
p.Arg242Cys	Unknown	-1.386	-1.619	Destabilises protomer; mildly destabilises complex; affect metal binding
p.Arg242His	0.00002471	-1.948	-2.035	Destabilises protomer; mildly destabilises complex; affect metal binding
SDHD				
p.Pro81Leu	Unknown	-0.297	0.036	Destabilising transmembrane
p.Asp92Tyr	Unknown	-0.907	-0.868	Destabilising transmembrane
p.Tyr114Cys	Unknown	0.236	0.388	Stabilising

Mutations with no or unknown pathogenicity

Mutation	Allele frequency	mCSM	DUET	Predicted effect
SDHB				
p.Ala3Gly	0.00436	-0.28	-0.244	Neutral
p.Thr17Ala	Unknown	-0.943	-0.82	Destabilising
p.Cys22Ser	0.0001331	0.119	0.135	Neutral
p.Arg27Gly	0.00004183	-0.229	-0.208	Neutral
p.His57Arg	0.0007249	-0.238	0.011	Neutral
p.Ser100Phe	Unknown	-0.226	-0.368	Neutral
p.Ser163Pro	0.01254	-0.136	-0.03	Introduction of a conformational restraint
SDHD				
p.Gly12Ser	0.007268	-0.377	-0.134	Altered localisation
p.Arg17Leu	Unknown	0.549	0.481	Mildly stabilising
p.Ile40Val	0.00003295	-0.461	-0.182	Neutral
p.Glu42Ala	Unknown	-0.255	-0.017	Neutral
p.His50Arg	0.006515	-0.4	-0.155	Altered localisation
p.Pro87His	Unknown	-0.571	-0.442	Neutral
p.His145Asn	Unknown	-0.055	0.018	Neutral

Allele frequencies are as reported in the ExAC database (Exome Aggregation Consortium, Cambridge, Massachusetts, USA), all ethnicities, accessed 17 June 2017⁶¹

mCSM-PPI to predict their effect on succinate complex formation²² (table 2).

SDHB/SDHD variants with no or uncertain pathogenicity were predicted by DUET to have little effect on either protein stability and protein complex formation (average $\Delta\Delta G$ -0.15 Kcal/mol) in contrast to disease associated mutations (average $\Delta\Delta G$ -1.41 Kcal/mol) ($P < 0.001$ two-tailed t-test).

Of the 21 disease-associated *SDHB* missense mutations, 20 are predicted to be destabilising, 16 are predicted to destabilise

the complex and 4 (p.Cys98Arg, p.Cys101Tyr, p.Cys113Tyr and p.Cys196Tyr) are in metal coordinating cysteines. The most destabilising *SDHB* missense mutation, p.Ile127Ser, affected an isoleucine residue buried deep in the protein with a strong network of intramolecular hydrophobic interactions³² (figure 3A). The three *SDHB* mutations not predicted to alter protein stability were all predicted to affect the coordination of an iron-sulphur cluster, either directly or by affecting neighbourhood residues (figure 3B).

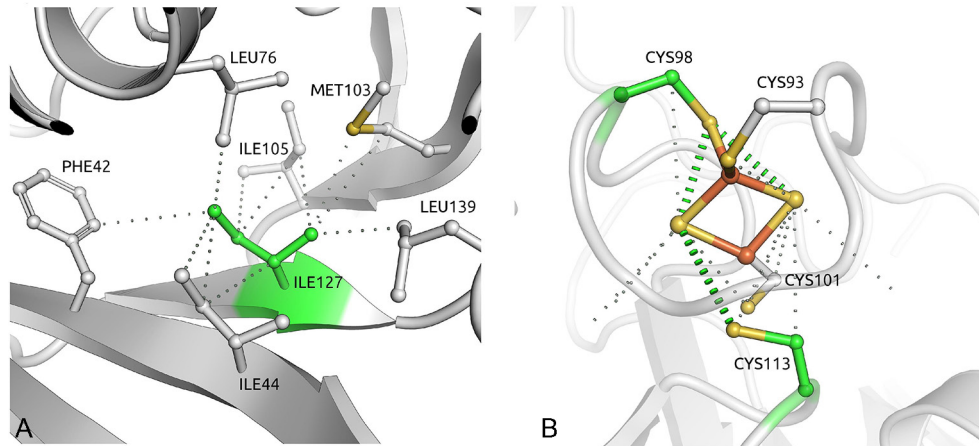


Figure 3 (A) The isoleucine residue at position 127 of *SDHB* is buried in the middle of the structure, making a network of strong intramolecular hydrophobic interactions. Mutation to serine would introduce a polar residue and disrupt all of these important contacts. (B) One of three iron–sulphur clusters in *SDHB*, coordinated by four cysteine residues. Four of these (Cys98, Cys101, Cys113 and Cys196) are mutated in our cohort.

Structure–phenotype correlations and mutation specific phenotypes
We confirmed our previous observation¹⁰ that the *SDHD* p.Pro81Leu phenotype is distinct from that of other *SDHD* mutation carriers, with a low PPGL risk (figure 4). Of 53 individuals with detailed clinical information, 15 were asymptomatic, 37 had HNPGL (two metastatic) and 1 had PPGL (described previously by Yeap *et al*).¹⁶ The p.Pro81Leu mutation is predicted to have a very mild effect on protein stability. Excluding the cases originally analysed by Ricketts *et al*¹⁰ to create a replication cohort confirmed the lower risk of PPGL in *SDHD* p.Pro81Leu mutation carriers versus other *SDHD* mutation carriers ($P=0.031$, data not shown).

There were no differences in age-related risks of PPGL/HNPGL between missense and truncating variants (data not shown). However, there was a higher overall penetrance for clinical disease (all tumour risk) ($P=0.0047$) and PPGL risk ($P=0.00024$) in p.Ile127Ser mutation carriers (the missense mutation with the highest DUET score for predicted protein instability) compared with other missense mutations.

Furthermore, using the `surv_cutpoint()` function in R, which is designed to use the maximally selected rank statistics from the ‘maxstat’ R package to find the optimum cutpoint for continuous variables, the PPGL/HNPGL and PPGL risks were significantly higher for those missense mutations with the most destabilising DUET scores (PPGL/HNPGL penetrance: $P=0.0086$; PPGL penetrance: $P=0.00025$). The significance of these differences was preserved when calculated for probands only (PPGL/HNPGL penetrance: $P=0.021$; PPGL penetrance: $P=0.0051$, see figure 5).

DISCUSSION

To our knowledge, this is the largest series of *SDHB/SDH-C/SDHD* mutation carriers yet reported (see online supplementary tables 2 and 4) and the previous largest cohort from Buffet *et al*²⁸ (363 probands, 269 with *SDHB/C/D* mutations), which did not report genotype–phenotype correlations. Our large-scale comprehensive genotype–phenotype assessments uncovered a series of novel observations:

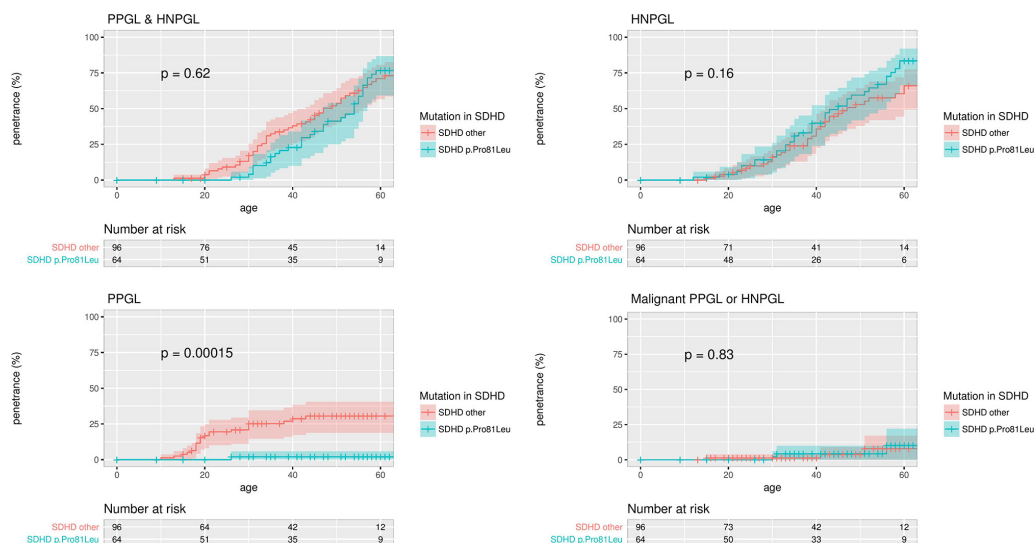


Figure 4 Penetrance of clinical disease in proband and non-proband *SDHD* p.Pro81Leu mutation carriers versus all other *SDHD* mutation carriers with 95% CI marked. P values are for the log-rank test comparing the survival distributions of *SDHD* p.Pro81Leu and all other *SDHD* mutation carriers. HNPGL, head and neck paraganglioma; PPGL, pheochromocytoma and paraganglioma.

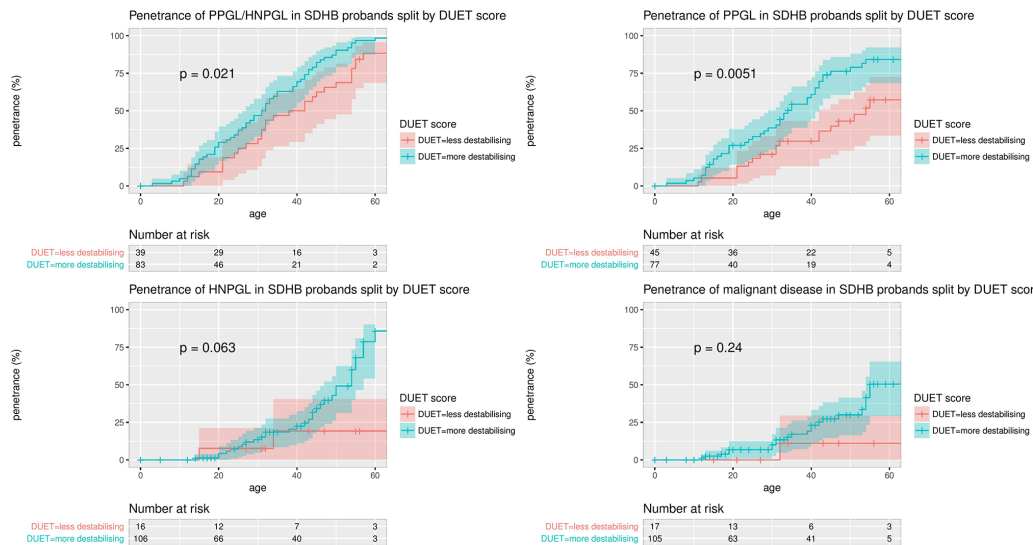


Figure 5 Penetrance of clinical disease in *SDHB* missense mutation carrier probands, split by with more stabilising (more negative) and less destabilising (less negative) DUET scores. The maximally selected rank statistics from the 'maxstat' R package was used to find the optimum cutpoint for DUET score, and the number of probands in the DUET score groups for each analysis is displayed in 'Number at risk' tables below each plot. The optimum cutpoints for DUET score were -1.21 for PPGL risk and for PPGL/HNPGL risk, -0.88 for HNPGL risk and -1.02 for malignancy risk. HNPGL, head and neck paraganglioma; PPGL, pheochromocytoma and paraganglioma.

Gene-specific and mutation-specific differences in penetrance and expression

We unequivocally confirmed that *SDHD* mutation carriers had a higher overall penetrance for symptomatic tumours and a higher risk of HNPGL compared with *SDHB*, whereas *SDHB* mutation carriers had a higher risk of malignancy and were significantly more likely to develop PPGL. We have confirmed the findings of Jochmanova *et al*³³ that male *SDHB* mutation carriers are at higher risk of disease than females (calculated by Kaplan-Meier analysis and log-rank testing). The reason for this observation is not clear. Although it is possible that because asymptomatic female at risk relative might be more likely to come forward for predictive genetic testing than males we note that in our cohort, there were more male than female probands with *SDHB* mutations (153 male, 110 female), and there were equal numbers of male and female non-probands with *SDHB* mutations (198 male, 201 female). Of the unaffected at risk relatives without a mutation (relatives of *SDHB*/D/C mutation carriers), 130 were female and just 103 were male.

The phenotype associated with *SDHC* mutations has not been well defined. Early reports described benign HNPGLs,^{5 34 35} but more recent studies have also identified extra-adrenal paragangliomas and more invasive tumours. Bickmann *et al*³⁶ and Bourdeau *et al*³⁷ both describe *SDHC* p.Arg133X mutation carriers (a mutation that is also common in our cohort) presenting with extra-adrenal paragangliomas and HNPGLs, both benign and malignant. Our findings of *SDHC* mutation carriers with extra-adrenal paragangliomas, pheochromocytoma and a case of HNPGL with malignant features are consistent with similar tumour risks with *SDHC* and paternally inherited *SDHD* mutations (Lefebvre and Foulkes³⁸ recommend similar tumour screening for *SDHC* and *SDHD* mutation carriers).

We replicated our previous finding that *SDHD* p.Pro81Leu mutation carriers manifest almost exclusively with HNPGL, while other *SDHD* mutation types predispose to both HNPGLs and PPGLs. From a clinical perspective, it can be proposed that *SDHD* p.Pro81Leu mutation carriers do not need intensive imaging for PPGL. Although the risk of PPGL in *SDHD*

p.Pro81Leu mutation carriers was not zero, the single patient with a pheochromocytoma was highly unusual¹⁶ and was the only example of tumour development after maternal inheritance of a *SDHD* mutation. Interestingly, all of the rare cases of tumours in individuals with maternally inherited *SDHD* mutations have been pheochromocytomas and none have had a HNPGL.^{16 39 40} *SDHD* has a key role in anchoring the SDH complex to the inner mitochondrial membrane, and a truncating *SDHD* mutation would inactivate the function of the entire SDH complex and be predicted to lead to disordered signalling in the hypoxic gene response pathway and to epigenetic abnormalities resulting from inhibition of enzymes such as prolyl-hydroxylases and ten-eleven translocation enzymes.⁴¹⁻⁴⁴ The *SDHD* p.Pro81Leu mutation is predicted not to cause protein instability but to interfere with ubiquinone metabolism/electron transport by changing the folding of helix 1S and by destroying a ubiquinone binding site.^{10 45} The small risk of PPGL with the p.Pro81Leu mutations suggests that PPGL and HNPGL result from impairment of different aspects of the function of the SDH complex.

Our *in silico* analysis of the structural effects of *SDHB* missense mutations revealed a novel genotype-phenotype association in which the missense mutations predicted to have the greatest protein destabilising effects were associated with a higher penetrance and risk of PPGL. If these findings are confirmed, they could be used to stratify tumour surveillance programmes according to individual mutation risks. They could complement other methods, such as tumours studies and *in vitro* functional studies in human tissues or model organisms such as yeast,⁴⁶ to elucidate the molecular mechanisms and clinical significance of the mutation.

Other tumours

We also found a variety of rarer tumour types in individuals with *SDHB*/*SDHC*/*SDHD* mutations, including renal cell carcinoma (RCC), GIST, thyroid and pituitary tumours.^{7 10 47-51} The highest risk for RCC is in *SDHB* mutation carriers (though they can occur in *SDHD* and *SDHC* mutation carriers), and we estimated

the risk of RCC by age 60 years in *SDHB* carriers is 4.7% (95% CI 1.6% to 7.7%) by Kaplan-Meier analysis of probands and non-probands and 5.63%/3.18% (male/female risk) by retrospective cohort analysis.

Although the risk of renal tumours is smaller than for PPGL, if abdominal imaging is being performed for PPGL, it is straightforward to incorporate renal imaging. Our results suggest that thyroid imaging is not indicated if asymptomatic.

Penetrance in non-probands

Accurate knowledge of the natural history of a disease is required for optimum management. For rare diseases, there may be limited numbers of affected individuals, and ascertainment bias in research studies can result in over-representation of extreme phenotypes with overestimation of disease risks. Interestingly, with wider application of *SDHB/C/D* genetic testing, penetrance estimates for *SDHB* mutation carriers have declined. Original methods used Kaplan-Meier analysis of both probands and non-probands and produced penetrance estimates such as 75% by age 50 years,⁷ ~55% by age 50 years¹² and 50% by age 50 years.¹⁰ Subsequently, analyses have been published that have controlled for ascertainment bias by excluding probands, producing estimates more like 20% by age 50 years.^{14,33} An alternative approach has been to study a single large family so that the majority of patients analysed are non-probands, producing penetrance estimates of 35% by age 40 years⁵² and 26% by age 48.⁵³ More recently, the use of maximum likelihood methods to control for ascertainment bias has resulted in estimates of penetrance as low as 13%,¹³ 9%⁵⁴ and 21%⁵⁵ at age 50 years.

The above cohorts have ranged in size from 15 to 344 *SDHB* mutation carriers. To better understand the prognosis for individuals undergoing predictive testing, we tested a large (n=584 with detailed clinical information) cohort of *SDHB* mutation carriers, adjusting for ascertainment bias using two approaches. We estimated overall clinical penetrance and tumour-specific risks by Kaplan-Meier analysis after excluding probands and compared the estimates with those obtained by retrospective cohort analysis in *SDHB* mutation carriers. We estimated clinical disease penetrance in non-proband *SDHB* mutation carriers at 50 years, 60 years and 80 years to be 16%, 22% and 44%, respectively, and these were similar with the retrospective cohort analysis estimates: cumulative risk of 24% for PPLG/HNPGL by age 60 years and 31% by age 80 years. One limitation to our analysis was that the unavailability of pedigree structures that would have allowed us to look for potential parent-of-origin effects and to fully adjust for ascertainment.

The recent demonstrations of lower tumour risks raise important questions regarding follow-up for asymptomatic *SDHB* mutation carriers. Blood/urine biochemical analysis to detect metanephrines is inexpensive, but the risk of non-secretory and malignant PPGL/HNPGL and renal and GIST tumours would argue for regular imaging. The Endocrine Society guidelines⁵⁶ recommend annual biochemistry with urine or plasma metanephrines and 2 yearly cross-sectional imaging using either CT/MRI of skull base, neck, thorax abdomen and pelvis. It should be noted that the our tumour risk estimates are for clinically apparent disease and are censored at the time of genetic testing. Subsequently, asymptomatic mutation carriers will have undergone biochemical and radiological surveillance and, though this information was not available, some may have been found to have an asymptomatic tumour. Thus, in a study of 30 SDHx mutation carriers,⁵⁷ a tumour was detected in one patient after 1 year follow-up from normal baseline imaging. Tufton

*et al*⁵⁸ describe a cohort of 65 asymptomatic *SDHB* mutation carriers undergoing surveillance by MRI. They found that 25% of these patients had a likely SDH-related tumour identified after baseline imaging or after a further 2–6 years of screening. The penetrance estimates for clinically apparent tumours in our study will be lower than those estimated in studies where patients have completed comprehensive screening and follow-up but are comparable with those from other large cohort studies and are consistent with more recent, although smaller, studies (see above) that have concluded that *SDHB* mutations are not associated with a high lifetime risk for clinically apparent tumours. Although the non-inclusion of asymptomatic screen-detected lesions might be viewed as a limitation of the study design, it does avoid the uncertainties regarding whether asymptomatic tumours would become symptomatic, and the risk estimates for clinically apparent tumours are highly relevant to patients wishing to know their lifetime risks of having a symptomatic tumour.

In the light of the robust data from this and other studies demonstrating lower than previously estimated tumour risks in *SDHB* non-proband mutation carriers, there is a pressing need to continue to systematically collect data on the outcome of surveillance programmes. It is also highly relevant to develop strategies to enable patient stratification (eg, individuals at high risk because of specific mutations or family history/genetic modifiers) and to enable non-invasive early detection of tumours.

Author affiliations

¹Department of Medical Genetics, University of Cambridge and NIHR Cambridge Biomedical Research Centre and Cancer Research UK Cambridge Cancer Centre and Cambridge University Hospitals NHS Foundation Trust, Cambridge, UK

²Department of Biochemistry, University of Cambridge, Cambridge, UK

³Department of Biochemistry and Molecular Biology, Bio21 Institute, University of Melbourne, Melbourne, Victoria, Australia

⁴Instituto René Rachou, Fundação Oswaldo Cruz, Belo Horizonte, Brazil

⁵Department of Public Health and Primary Care, University of Cambridge, Cambridge, UK

⁶West Midlands Regional Genetics service, Birmingham Women's Hospital, Birmingham, UK

⁷Department of Clinical Genetics, Queen Elizabeth University Hospital, Glasgow, UK

⁸Yorkshire Regional Genetics Service, St. James's University Hospital, Leeds, UK

⁹Department of Endocrinology, King's College Hospital, London, UK

¹⁰Northern Genetics Service, Newcastle upon Tyne Hospitals NHS Foundation Trust, Newcastle upon Tyne, UK

¹¹Peninsula Clinical Genetics Service, Royal Devon & Exeter Hospital, Exeter, UK

¹²Department of Clinical Genetics, Sheffield Children's Hospital, Sheffield, UK

¹³Department of Clinical Genetics, St Michael's Hospital, Bristol, UK

¹⁴Department of Clinical Genetics, Liverpool Women's NHS Foundation Trust, Liverpool, UK

¹⁵Department of Medical Genetics, St. George's University of London, London, UK

¹⁶Queen Elizabeth Medical Centre, Queen Elizabeth Hospital, Birmingham, UK

¹⁷Manchester Centre for Genomic Medicine, St Mary's Hospital, Central Manchester University Hospitals NHS Foundation Trust, Manchester, UK

¹⁸East of Scotland Regional Genetics Service, Ninewells Hospital and Medical School, Dundee, UK

¹⁹Northern Ireland Regional Genetics Service, Belfast City Hospital, Belfast Health & Social Care Trust, Belfast, UK

²⁰Department of Clinical Genetics, Addenbrooke's Treatment Centre, Cambridge University Hospitals NHS Foundation Trust, Cambridge, UK

²¹The Wolfson Diabetes and Endocrine Clinic, Institute of Metabolic Science, Cambridge University Hospitals NHS Foundation Trust, Cambridge, UK

²²Department of Clinical Genetics, Guy's Hospital, London, UK

²³Institute of Cardiovascular & Medical Sciences, University of Glasgow, Glasgow, Scotland

Acknowledgements We would like to thank the patients and the many clinicians and clinical laboratory scientists who contributed to this research. We apologise to researchers whose work we have not cited because of space limitations.

Contributors ERM conceived, designed and supervised the study. KAA collected the data and performed the Kaplan-Meier analysis. DBA and DEVP produced the in silico structural prediction analysis. DRB and ACA performed the retrospective cohort

Cancer genetics

analysis calculations. The remaining authors clinically characterised the patients at their respective centres. All authors were involved in drafting the article or revising it critically for important intellectual content and in the final approval of the version to be submitted. KAA and ERM wrote the first draft of the paper and are responsible for the overall content as guarantors.

Funding This work was supported by the East Anglian Foundation Programme (to KAA), the University of Cambridge (KAA), NIHR Cambridge Biomedical Research Centre (KAA and ERM), Cancer Research UK Cambridge Cancer Centre (ERM), European Research Council Advanced Researcher Award (ERM), British Heart Foundation (EM), NIHR Senior Investigator Award (ERM), Newton Fund RCUK-CONFAP Grant awarded by The Medical Research Council (MRC), Fundação de Amparo à Pesquisa do Estado de Minas Gerais (FAPEMIG) (to DEVP and DBA), NHMRC CJ Martin Fellowship (APP1072476) and Jack Brockhoff Foundation (JBF 4186, 2016) (to DBA), Instituto René Rachou (CPqRR/FIOCRUZ Minas) and Conselho Nacional de Desenvolvimento Científico e Tecnológico (CNPq) (to DEVP), Health Research Board Ireland (RTC) and Cancer Research – UK grant C12292/A20861 (to ACA). The University of Cambridge has received salary support in respect of EM from the NHS in the East of England through the Clinical Academic Reserve. The views expressed are those of the authors and not necessarily those of the NHS or Department of Health.

Disclaimer The funding agencies had no role in study design, data collection or analysis or writing of the article.

Competing interests None declared.

Patient consent Obtained.

Ethics approval South Birmingham Research Ethics Committee.

Provenance and peer review Not commissioned; externally peer reviewed.

Open Access This is an Open Access article distributed in accordance with the terms of the Creative Commons Attribution (CC BY 4.0) license, which permits others to distribute, remix, adapt and build upon this work, for commercial use, provided the original work is properly cited. See: <http://creativecommons.org/licenses/by/4.0/>

© Article author(s) (or their employer(s) unless otherwise stated in the text of the article) 2018. All rights reserved. No commercial use is permitted unless otherwise expressly granted.

REFERENCES

- 1 Maher ER. Pheochromocytoma and paraganglioma: next-generation sequencing and evolving Mendelian syndromes. *Clin Med* 2014;14:440–4.
- 2 Favier J, Amar L, Gimenez-Roqueplo AP. Paraganglioma and pheochromocytoma: from genetics to personalized medicine. *Nat Rev Endocrinol* 2015;11:101–11.
- 3 Toledo RA, Burnichon N, Cascon A, Benn DE, Bayley JP, Welander J, Tops CM, Firth H, Dwight T, Ercolino T, Mannelli M, Opocher G, Clifton-Bligh R, Gimm O, Maher ER, Robledo M, Gimenez-Roqueplo AP, Dahia PL; NGS in PPGL (NGSnPPGL) Study Group. Consensus Statement on next-generation-sequencing-based diagnostic testing of hereditary pheochromocytomas and paragangliomas. *Nat Rev Endocrinol* 2017;13:233–47.
- 4 Baysal BE, Ferrell RE, Willett-Brozick JE, Lawrence EC, Mysiok D, Bosch A, van der Mey A, Taschner PE, Rubinstein WS, Myers EN, Richard CW, Cornelisse CJ, Devilee P, Devlin B. Mutations in SDHD, a mitochondrial complex II gene, in hereditary paraganglioma. *Science* 2000;287:848–51.
- 5 Niemann S, Müller U. Mutations in SDHC cause autosomal dominant paraganglioma, type 3. *Nat Genet* 2000;26:268–70.
- 6 Astuti D, Latif F, Dallol A, Dahia PL, Douglas F, George E, Sköldbberg F, Husebye ES, Eng C, Maher ER. Gene mutations in the succinate dehydrogenase subunit SDHB cause susceptibility to familial pheochromocytoma and to familial paraganglioma. *Am J Hum Genet* 2001;69:49–54.
- 7 Neumann HP, Pawlu C, Peczkowska M, Bausch B, McWhinney SR, Muresan M, Buchta M, Franke G, Klisch J, Bley TA, Hoegerle S, Boedeker CC, Opocher G, Schipper J, Januszewicz A, Eng C; European-American Paraganglioma Study Group. Distinct clinical features of paraganglioma syndromes associated with SDHB and SDHD gene mutations. *JAMA* 2004;292:943–51.
- 8 Burnichon N, Rohmer V, Amar L, Herman P, Lebloulec S, Darrouzet V, Niccoli P, Gaillard D, Chabrier G, Chabolle F, Coupiot I, Thieblot P, Lecomte P, Bertherat J, Wion-Barbot N, Murat A, Venisse A, Plouin PF, Jeunemaitre X, Gimenez-Roqueplo AP; PGL.NET network. The succinate dehydrogenase genetic testing in a large prospective series of patients with paragangliomas. *J Clin Endocrinol Metab* 2009;94:2817–27.
- 9 Mannelli M, Castellano M, Schiavi F, Filetti S, Giacchè M, Mori L, Pignataro V, Bernini G, Giacchè V, Bacca A, Biondi B, Corona G, Di Trapani G, Grossrubatscher E, Reimondo G, Arnaldi G, Giacchetti G, Veglio F, Loli P, Colao A, Ambrosio MR, Terzolo M, Letizia C, Ercolino T, Opocher G; Italian Pheochromocytoma/Paraganglioma Network. Clinically guided genetic screening in a large cohort of Italian patients with pheochromocytomas and/or functional or nonfunctional paragangliomas. *J Clin Endocrinol Metab* 2009;94:1541–7.
- 10 Ricketts CJ, Forman JR, Rattenberry E, Bradshaw N, Lalloo F, Izatt L, Cole TR, Armstrong R, Kumar VK, Morrison PJ, Atkinson AD, Douglas F, Ball SG, Cook J, Srirangalingam U, Killick P, Kirby G, Aylwin S, Woodward ER, Evans DG, Hodgson SV, Murday V, Chew SL, Connell JM, Blundell TL, Macdonald F, Maher ER. Tumor risks and genotype-phenotype-proteotype analysis in 358 patients with germline mutations in SDHB and SDHD. *Hum Mutat* 2010;31:41–51.
- 11 Ricketts C, Woodward ER, Killick P, Morris MR, Astuti D, Latif F, Maher ER. Germline SDHB mutations and familial renal cell carcinoma. *J Natl Cancer Inst* 2008;100:1260–2.
- 12 Benn DE, Gimenez-Roqueplo AP, Reilly JR, Bertherat J, Burgess J, Byth K, Crosson M, Dahia PL, Elston M, Gimm O, Henley D, Herman P, Murday V, Niccoli-Sire P, Pasięka JL, Rohmer V, Tucker K, Jeunemaitre X, Marsh DJ, Plouin PF, Robinson BG. Clinical presentation and penetrance of pheochromocytoma/paraganglioma syndromes. *J Clin Endocrinol Metab* 2006;91:827–36.
- 13 Schiavi F, Milne RL, Anda E, Blay P, Castellano M, Opocher G, Robledo M, Cascón A. Are we overestimating the penetrance of mutations in SDHB? *Hum Mutat* 2010;31:761–2.
- 14 Jafri M, Whitworth J, Rattenberry E, et al. Evaluation of SDHB, SDHD and VHL gene susceptibility testing in the assessment of individuals with non-syndromic pheochromocytoma, paraganglioma and head and neck paraganglioma. *Clin Endocrinol* 2013;78:898–906.
- 15 Hoekstra AS, Addie RD, Ras C, Seifar RM, Ruivenkamp CA, Briare-de Bruijn IH, Hes FJ, Jansen JC, Corssmit EP, Corver WE, Morreau H, Bovée JV, Bayley JP, Devilee P. Parent-of-origin tumorigenesis is mediated by an essential imprinted modifier in SDHD-linked paragangliomas: *SLC22A18* and *CDKN1C* are candidate tumour modifiers. *Hum Mol Genet* 2016;25:3715–28.
- 16 Yeap PM, Tobias ES, Mavraki E, Fletcher A, Bradshaw N, Freil EM, Cooke A, Murday VA, Davidson HR, Perry CG, Lindsay RS. Molecular analysis of pheochromocytoma after maternal transmission of SDHD mutation elucidates mechanism of parent-of-origin effect. *J Clin Endocrinol Metab* 2011;96:E2009–E2013.
- 17 Astuti D, Hart-Holden N, Latif F, Lalloo F, Black GC, Lim C, Moran A, Grossman AB, Hodgson SV, Freemont A, Ramsden R, Eng C, Evans DG, Maher ER. Genetic analysis of mitochondrial complex II subunits SDHD, SDHB and SDHC in paraganglioma and pheochromocytoma susceptibility. *Clin Endocrinol* 2003;59:728–33.
- 18 Armstrong R, Greenhalgh KL, Rattenberry E, Judd B, Shukla R, Losty PD, Maher ER. Succinate dehydrogenase subunit B (SDHB) gene deletion associated with a composite paraganglioma/neuroblastoma. *J Med Genet* 2009;46:215–6.
- 19 Henderson A, Douglas F, Perros P, Morgan C, Maher ER. SDHB-associated renal oncocytoma suggests a broadening of the renal phenotype in hereditary paragangliomatosis. *Fam Cancer* 2009;8:257–60.
- 20 Rattenberry E, Vialard L, Yeung A, Bair H, McKay K, Jafri M, Canham N, Cole TR, Denes J, Hodgson SV, Irving R, Izatt L, Korbonits M, Kumar AV, Lalloo F, Morrison PJ, Woodward ER, Macdonald F, Wallis Y, Maher ER. A comprehensive next generation sequencing-based genetic testing strategy to improve diagnosis of inherited pheochromocytoma and paraganglioma. *J Clin Endocrinol Metab* 2013;98:E124 8–E1256.
- 21 Landrum MJ, Lee JM, Benson M, Brown G, Chao C, Chitipiralla S, Gu B, Hart J, Hoffman D, Hoover J, Jang W, Katz K, Ovetsky M, Riley G, Sethi A, Tully R, Villamarin-Salomon R, Rubinstein W, Maglott DR. ClinVar: public archive of interpretations of clinically relevant variants. *Nucleic Acids Res* 2016;44:D862–D868.
- 22 Pires DE, Ascher DB, Blundell TL. mCSP: predicting the effects of mutations in proteins using graph-based signatures. *Bioinformatics* 2014;30:335–42.
- 23 Pires DE, Chen J, Blundell TL, Ascher DB. In silico functional dissection of saturation mutagenesis: Interpreting the relationship between phenotypes and changes in protein stability, interactions and activity. *Sci Rep* 2016;6:19848.
- 24 Pires DE, Ascher DB, Blundell TL. DUET: a server for predicting effects of mutations on protein stability using an integrated computational approach. *Nucleic Acids Res* 2014;42:W314–W319.
- 25 R Core Team. *R: A Language and Environment for Statistical Computing*. Vienna, Australia: R Foundation for Statistical Computing, 2017.
- 26 Barnes DR, Lee A, Easton DF, Antoniou AC. EMBRACE Investigators, kConFab Investigators. Evaluation of association methods for analysing modifiers of disease risk in carriers of high-risk mutations. *Genet Epidemiol* 2012;36:274–91.
- 27 Lange K, Weeks D, Boehnke M, MacCluer JW, MacCluer JW. Programs for Pedigree Analysis: MENDEL, FISHER, and dGENE. *Genet Epidemiol* 1988;5:471–2.
- 28 Buffet A, Venisse A, Nau V, Roncellin I, Boccio V, Le Pottier N, Boussion M, Travers C, Simian C, Burnichon N, Abermil N, Favier J, Jeunemaitre X, Gimenez-Roqueplo AP. A decade (2001–2010) of genetic testing for pheochromocytoma and paraganglioma. *Horm Metab Res* 2012;44:359–66.
- 29 Neumann HP, Erlic Z, Boedeker CC, Rybicki LA, Robledo M, Hermsen M, Schiavi F, Falconi M, Kwok P, Bauters C, Lampe K, Fischer M, Edelman E, Benn DE, Robinson BG, Wiegand S, Rasp G, Stuck BA, Hoffmann MM, Sullivan M, Sevilla MA, Weiss MM, Peczkowska M, Kubaszek A, Pigny P, Ward RL, Learoyd D, Crosson M, Zabolotny D, Yaremchuk S, Draf W, Muresan M, Lorenz RR, Knipping S, Strohm M, Dyckhoff G, Matthias C, Reisch N, Preuss SF, Esser D, Walter MA, Kaftan H, Stöver T, Fottner C, Gorgulla H, Malekpour M, Zarandy MM, Schipper J, Brase C, Glien A, Kühnemund M, Koscielny S, Schwerdtfeger P, Välimäki M, Szyfter W, Finckh U, Zerres K, Cascon A, Opocher G, Ridder GJ, Januszewicz A, Suarez C, Eng C. Clinical predictors for germline

- mutations in head and neck paraganglioma patients: cost reduction strategy in genetic diagnostic process as fall-out. *Cancer Res* 2009;69:3650–6.
- 30 Bayley JP, Grimbergen AE, van Bunderen PA, van der Wielen M, Kunst HP, Lenders JW, Jansen JC, Dullaart RP, Devilee P, Corssmit EP, Vriends AH, Losekoot M, Weiss MM. The first Dutch SDHB founder deletion in paraganglioma-pheochromocytoma patients. *BMC Med Genet* 2009;10:34.
 - 31 Hensen EF, van Duinen N, Jansen JC, Corssmit EP, Tops CM, Romijn JA, Vriends AH, van der Mey AG, Cornelisse CJ, Devilee P, Bayley JP. High prevalence of founder mutations of the succinate dehydrogenase genes in the Netherlands. *Clin Genet* 2012;81:284–8.
 - 32 Jubb HC, Higuero AP, Ochoa-Montaño B, Pitt WR, Ascher DB, Blundell TL. Arpeggio: A Web Server for Calculating and Visualising Interatomic Interactions in Protein Structures. *J Mol Biol* 2017;429:365–71.
 - 33 Jochmanova I, Wolf KI, King KS, Nambuba J, Wesley R, Martucci V, Raygada M, Adams KT, Prodanov T, Fojo AT, Lazurova I, Pacak K. SDHB-related pheochromocytoma and paraganglioma penetrance and genotype-phenotype correlations. *J Cancer Res Clin Oncol* 2017;143:1421–35.
 - 34 Baysal BE, Willett-Brozick JE, Filho PA, Lawrence EC, Myers EN, Ferrell RE. An Alu-mediated partial SDHC deletion causes familial and sporadic paraganglioma. *J Med Genet* 2004;41:703–9.
 - 35 Schiavi F, Boedeker CC, Bausch B, Peçzkowska M, Gomez CF, Strassburg T, Pawlu C, Buchta M, Salzmann M, Hoffmann MM, Berlis A, Brink I, Cybulla M, Muresan M, Walter MA, Forrer F, Välimäki M, Kawecki A, Sztukowski Z, Schipper J, Walz MK, Pigny P, Bauters C, Willett-Brozick JE, Baysal BE, Januszewicz A, Eng C, Opocher G, Neumann HP; European-American Paraganglioma Study Group. Predictors and prevalence of paraganglioma syndrome associated with mutations of the SDHC gene. *JAMA* 2005;294:2057–63.
 - 36 Bickmann JK, Sollfrank S, Schad A, Musholt TJ, Springer E, Miederer M, Bartsch O, Papaspyrou K, Koutsimpelas D, Mann WJ, Weber MM, Lackner KJ, Rossmann H, Fottner C. Phenotypic variability and risk of malignancy in SDHC-linked paragangliomas: lessons from three unrelated cases with an identical germline mutation (p.Arg133*). *J Clin Endocrinol Metab* 2014;99:E489–E496.
 - 37 Bourdeau I, Grunenwald S, Burnichon N, Khalifa E, Dumas N, Binet MC, Nolet S, Gimenez-Roqueplo AP. A SDHC Founder Mutation Causes Paragangliomas (PGLs) in the French Canadians: New Insights on the SDHC-Related PGL. *J Clin Endocrinol Metab* 2016;101:4710–8.
 - 38 Lefebvre M, Foulkes WD. Pheochromocytoma and paraganglioma syndromes: genetics and management update. *Curr Oncol* 2014;21:8.
 - 39 Bayley JP, Oldenburg RA, Nuk J, Hoekstra AS, van der Meer CA, Korpershoek E, McGillivray B, Corssmit EP, Dinjens WN, de Krijger RR, Devilee P, Jansen JC, Hes FJ. Paraganglioma and pheochromocytoma upon maternal transmission of SDHD mutations. *BMC Med Genet* 2014;15:111.
 - 40 Burnichon N, Mazzella JM, Drui D, Amar L, Bertherat J, Coupier I, Delemer B, Guilhem I, Herman P, Kerlan V, Tabarin A, Wion N, Lahlou-Laforet K, Favier J, Gimenez-Roqueplo AP. Risk assessment of maternally inherited SDHD paraganglioma and pheochromocytoma. *J Med Genet* 2017;54.
 - 41 Dahia PL, Ross KN, Wright ME, Hayashida CY, Santagata S, Barontini M, Kung AL, Sanso G, Powers JF, Tischler AS, Hodin R, Heitritter S, Moore F, Dluhy R, Sosa JA, Ocal IT, Benn DE, Marsh DJ, Robinson BG, Schneider K, Garber J, Arum SM, Korbonits M, Grossman A, Pigny P, Toledo SP, Nosé V, Li C, Stiles CD. A HIF1alpha regulatory loop links hypoxia and mitochondrial signals in pheochromocytomas. *PLoS Genet* 2005;1:e8–80.
 - 42 Pollard PJ, Brière JJ, Alam NA, Barwell J, Barclay E, Wortham NC, Hunt T, Mitchell M, Olpin S, Moat SJ, Hargreaves IP, Heales SJ, Chung YL, Griffiths JR, Dalgleish A, McGrath JA, Gleeson MJ, Hodgson SV, Poulosom R, Rustin P, Tomlinson IP. Accumulation of Krebs cycle intermediates and over-expression of HIF1alpha in tumours which result from germline FH and SDH mutations. *Hum Mol Genet* 2005;14:2231–9.
 - 43 López-Jiménez E, Gómez-López G, Leandro-García LJ, Muñoz I, Schiavi F, Montero-Conde C, de Cubas AA, Ramírez R, Landa I, Leskelä S, Maliszewska A, Inglada-Pérez L, de la Vega L, Rodríguez-Antona C, Letón R, Bernal C, de Campos JM, Díez-Tascón C, Fraga MF, Boullosa C, Pisano DG, Opocher G, Robledo M, Cascón A. Research resource: Transcriptional profiling reveals different pseudohypoxic signatures in SDHB and VHL-related pheochromocytomas. *Mol Endocrinol* 2010;24:2382–91.
 - 44 Morin A, Letouzé E, Gimenez-Roqueplo AP, Favier J. Oncometabolites-driven tumorigenesis: From genetics to targeted therapy. *Int J Cancer* 2014;135:2237–48.
 - 45 Sun F, Huo X, Zhai Y, Wang A, Xu J, Su D, Bartlam M, Rao Z. Crystal structure of mitochondrial respiratory membrane protein complex II. *Cell* 2005;121:1043–57.
 - 46 Panizza E, Ercolino T, Mori L, Rapizzi E, Castellano M, Opocher G, Ferrero I, Neumann HP, Mannelli M, Goffrini P. Yeast model for evaluating the pathogenic significance of SDHB, SDHC and SDHD mutations in PHEO-PGL syndrome. *Hum Mol Genet* 2013;22:804–15.
 - 47 Kiuru M, Vanharanta S, Virta SK, Buchta M, McWhinney SR, Aaltonen LA, Neumann HP, Eng C. Early-onset renal cell carcinoma caused by germline mutations in SDHB as a novel component of inherited paraganglioma syndrome. *Cancer Res* 2004;64:524.
 - 48 Pasini B, McWhinney SR, Bei T, Matyakhina L, Stergiopoulos S, Muchow M, Boikos SA, Ferrando B, Pacak K, Assie G, Baudin E, Chompret A, Ellison JW, Briere JJ, Rustin P, Gimenez-Roqueplo AP, Eng C, Carney JA, Stratakis CA. Clinical and molecular genetics of patients with the Carney-Stratakis syndrome and germline mutations of the genes coding for the succinate dehydrogenase subunits SDHB, SDHC, and SDHD. *Eur J Hum Genet* 2008;16:79–88.
 - 49 Janeway KA, Kim SY, Lodish M, Nosé V, Rustin P, Gaal J, Dahia PL, Liegl B, Ball ER, Raygada M, Lai AH, Kelly L, Hornick JL, O'Sullivan M, de Krijger RR, Dinjens WN, Demetri GD, Antonescu CR, Fletcher JA, Helman L, Stratakis CA; NIH Pediatric and Wild-Type GIST Clinic. Defects in succinate dehydrogenase in gastrointestinal stromal tumors lacking KIT and PDGFRA mutations. *Proc Natl Acad Sci U S A* 2011;108:314–8.
 - 50 Ni Y, Seballos S, Ganapathi S, Gurin D, Fletcher B, Ngeow J, Nagy R, Kloos RT, Ringel MD, LaFramboise T, Eng C. Germline and somatic SDHx alterations in apparently sporadic differentiated thyroid cancer. *Endocr Relat Cancer* 2015;22:121–30.
 - 51 Dénes J, Swords F, Rattenberry E, Stals K, Owens M, Cranston T, Xekouki P, Moran L, Kumar A, Waffis C, Fersht N, Baldeweg SE, Morris D, Lightman S, Agha A, Rees A, Grieve J, Powell M, Boguszewski CL, Dutta P, Thakker RV, Srirangalingam U, Thompson CJ, Druce M, Higham C, Davis J, Eeles R, Stevenson M, O'Sullivan B, Tanieri P, Skordilis K, Gabrovská P, Barlier A, Webb SM, Aulinas A, Drake WM, Bevan JS, Preda C, Dalantaeva N, Ribeiro-Oliveira A, Garcia IT, Yordanova G, Iotova V, Evanson J, Grossman AB, Trouillas J, Ellard S, Stratakis CA, Maher ER, Roncaroli F, Korbonits M. Heterogeneous genetic background of the association of pheochromocytoma/paraganglioma and pituitary adenoma: results from a large patient cohort. *J Clin Endocrinol Metab* 2015;100:E531–E541.
 - 52 Solis DC, Burnichon N, Timmers HJ, Raygada MJ, Kozupa A, Merino MJ, Makey D, Adams KT, Venisse A, Gimenez-Roqueplo AP, Pacak K. Penetrance and clinical consequences of a gross SDHB deletion in a large family. *Clin Genet* 2009;75:354–63.
 - 53 Hes FJ, Weiss MM, Woortman SA, de Miranda NF, van Bunderen PA, Bonsing BA, Stokkel MP, Morreau H, Romijn JA, Jansen JC, Vriends AH, Bayley JP, Corssmit EP. Low penetrance of a SDHB mutation in a large Dutch paraganglioma family. *BMC Med Genet* 2010;11:92.
 - 54 Rijken JA, Niemeijer ND, Corssmit EP, Jonker MA, Leemans CR, Menko FH, Hensen EF. Low penetrance of paraganglioma and pheochromocytoma in an extended kindred with a germline SDHB exon 3 deletion. *Clin Genet* 2016;89:128–32.
 - 55 Rijken JA, Niemeijer ND, Jonker MA, Eijkelenkamp K, Jansen JC, van Berkel A, Timmers H, Kunst HPM, Bisschop P, Kerstens MN, Dreijerink KMA, van Dooren MF, van der Horst-Schrivers ANA, Hes FJ, Leemans CR, Corssmit EPM, Hensen EF. The penetrance of paraganglioma and pheochromocytoma in SDHB germline mutation carriers. *Clin Genet* 2018;93.
 - 56 Lenders JW, Duh QY, Eisenhofer G, Gimenez-Roqueplo AP, Grebe SK, Murad MH, Naruse M, Pacak K, Young WF, Pheochromocytoma YWF; Endocrine Society. Pheochromocytoma and paraganglioma: an endocrine society clinical practice guideline. *J Clin Endocrinol Metab* 2014;99:1915–42.
 - 57 Lepoutre-Lussey C, Caramella C, Bidault F, Déandreis D, Berdelou A, Al Guzman A, Hartl D, Borget I, Gimenez-Roqueplo AP, Dumont F, Deschamps F, Nascimento C, Lumbroso J, Guillaud Bataille M, Schlumberger M, Baudin E, Leboulloux S. Screening in asymptomatic SDHx mutation carriers: added value of ¹⁸F-FDG PET/CT at initial diagnosis and 1-year follow-up. *Eur J Nucl Med Mol Imaging* 2015;42:868–76.
 - 58 Tufton N, Shapiro L, Srirangalingam U, Richards P, Sahdev A, Kumar AV, McAndrew L, Martin L, Berney D, Monson J, Chew SL, Waterhouse M, Druce M, Korbonits M, Metcalfe K, Drake WM, Storr HL, Akker SA. Outcomes of annual surveillance imaging in an adult and paediatric cohort of succinate dehydrogenase B mutation carriers. *Clin Endocrinol* 2017;86:286–96.
 - 59 Bayley JP, Devilee P, Taschner PE. The SDH mutation database: an online resource for succinate dehydrogenase sequence variants involved in pheochromocytoma, paraganglioma and mitochondrial complex II deficiency. *BMC Med Genet* 2005;6:39.
 - 60 Meyer-Rochow GY, Smith JM, Richardson AL, Marsh DJ, Sidhu SB, Robinson BG, Benn DE. Denaturing high performance liquid chromatography detection of SDHB, SDHD, and VHL germline mutations in pheochromocytoma. *J Surg Res* 2009;157:55–62.
 - 61 Exome Aggregation Consortium (ExAC). *ExAC Browser (Beta) | Exome Aggregation Consortium*. Cambridge, MA. <http://exac.broadinstitute.org>



Tumour risks and genotype–phenotype correlations associated with germline variants in succinate dehydrogenase subunit genes *SDHB*, *SDHC* and *SDHD*

Katrina A Andrews, David B Ascher, Douglas Eduardo Valente Pires, Daniel R Barnes, Lindsey Vialard, Ruth T Casey, Nicola Bradshaw, Julian Adlard, Simon Aylwin, Paul Brennan, Carole Brewer, Trevor Cole, Jackie A Cook, Rosemarie Davidson, Alan Donaldson, Alan Fryer, Lynn Greenhalgh, Shirley V Hodgson, Richard Irving, Fiona Laloo, Michelle McConachie, Vivienne P M McConnell, Patrick J Morrison, Victoria Murday, Soo-Mi Park, Helen L Simpson, Katie Snape, Susan Stewart, Susan E Tomkins, Yvonne Wallis, Louise Izatt, David Goudie, Robert S Lindsay, Colin G Perry, Emma R Woodward, Antonis C Antoniou and Eamonn R Maher

J Med Genet published online January 31, 2018

Updated information and services can be found at:

<http://jmg.bmj.com/content/early/2018/01/31/jmedgenet-2017-105127>

These include:

References

This article cites 57 articles, 7 of which you can access for free at: <http://jmg.bmj.com/content/early/2018/01/31/jmedgenet-2017-105127#ref-list-1>

Open Access

This is an Open Access article distributed in accordance with the terms of the Creative Commons Attribution (CC BY 4.0) license, which permits others to distribute, remix, adapt and build upon this work, for commercial use, provided the original work is properly cited. See: <http://creativecommons.org/licenses/by/4.0/>

Email alerting service

Receive free email alerts when new articles cite this article. Sign up in the box at the top right corner of the online article.

Topic Collections

Articles on similar topics can be found in the following collections

[Molecular genetics](#) (1255)
[Open access](#) (204)

Notes

To request permissions go to:

<http://group.bmj.com/group/rights-licensing/permissions>

To order reprints go to:

<http://journals.bmj.com/cgi/reprintform>

To subscribe to BMJ go to:

<http://group.bmj.com/subscribe/>