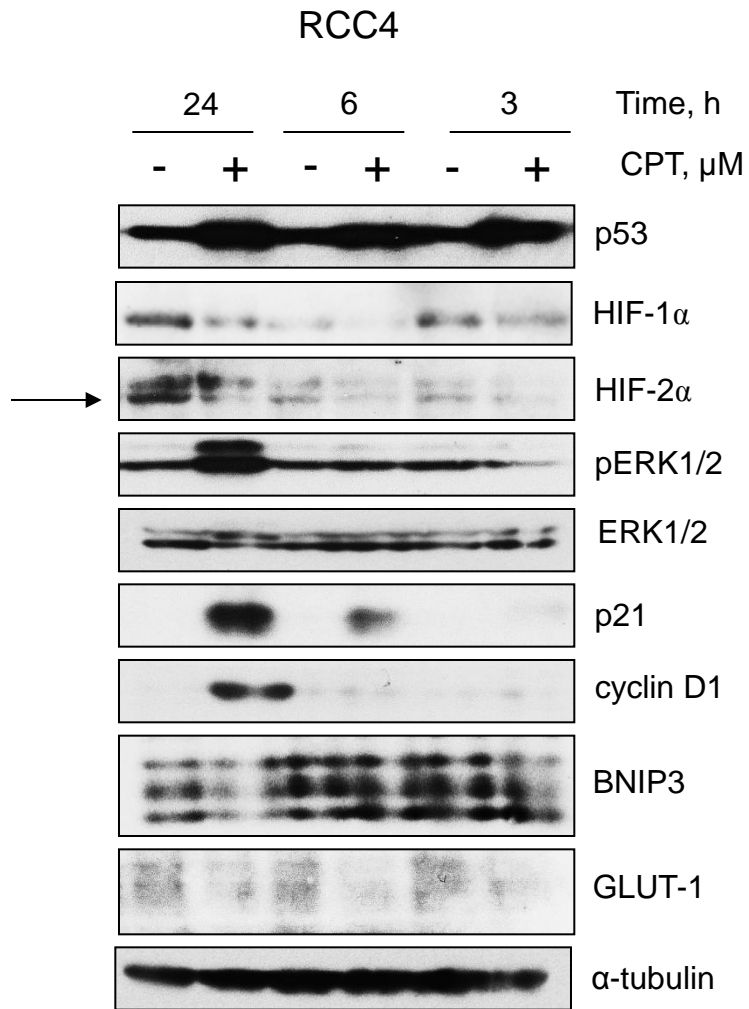
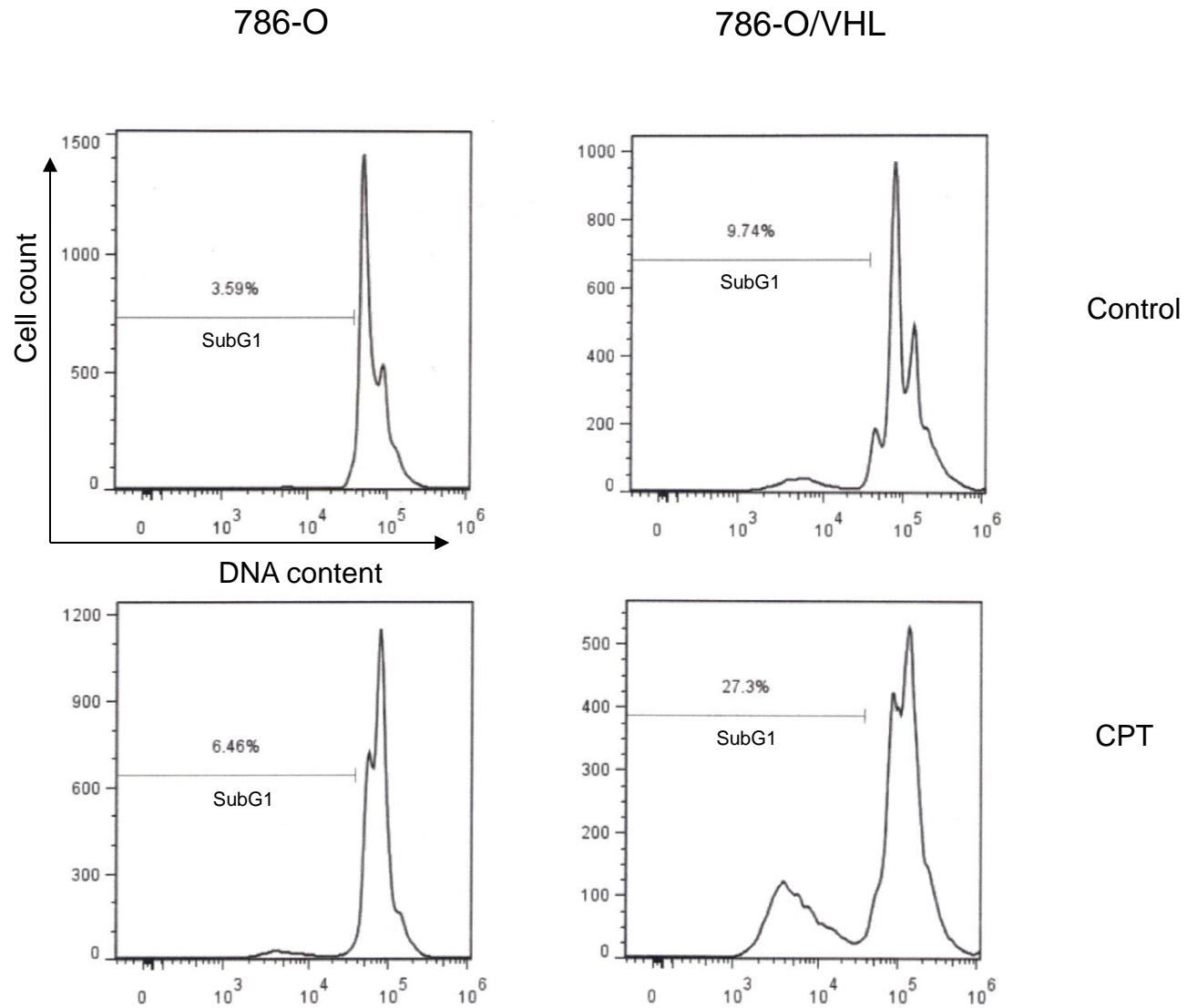


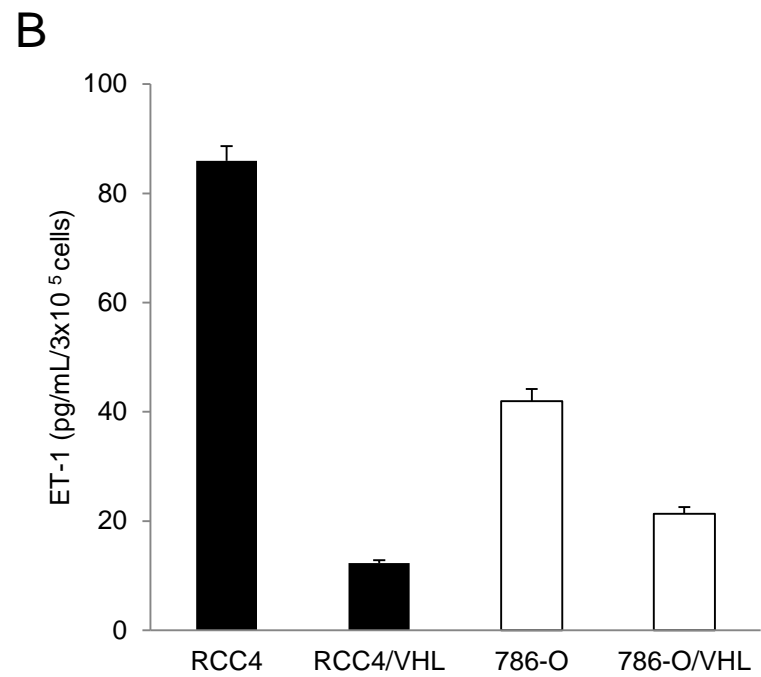
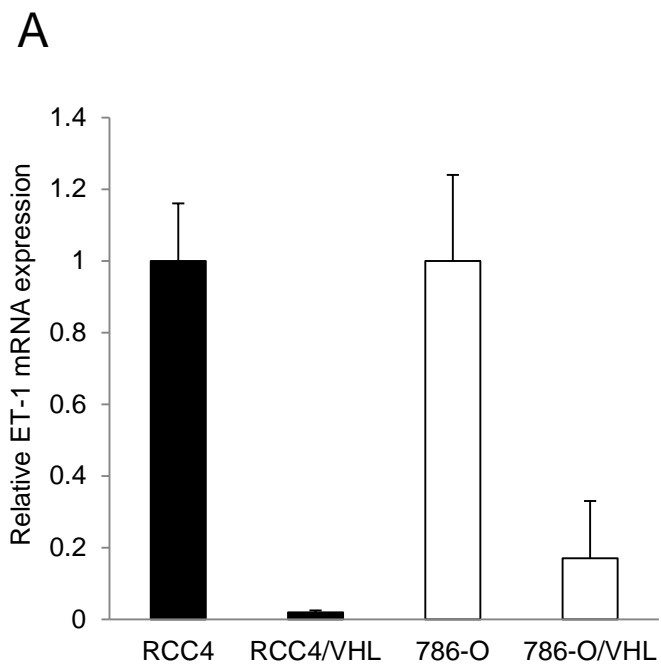
Supplementary Fig 1



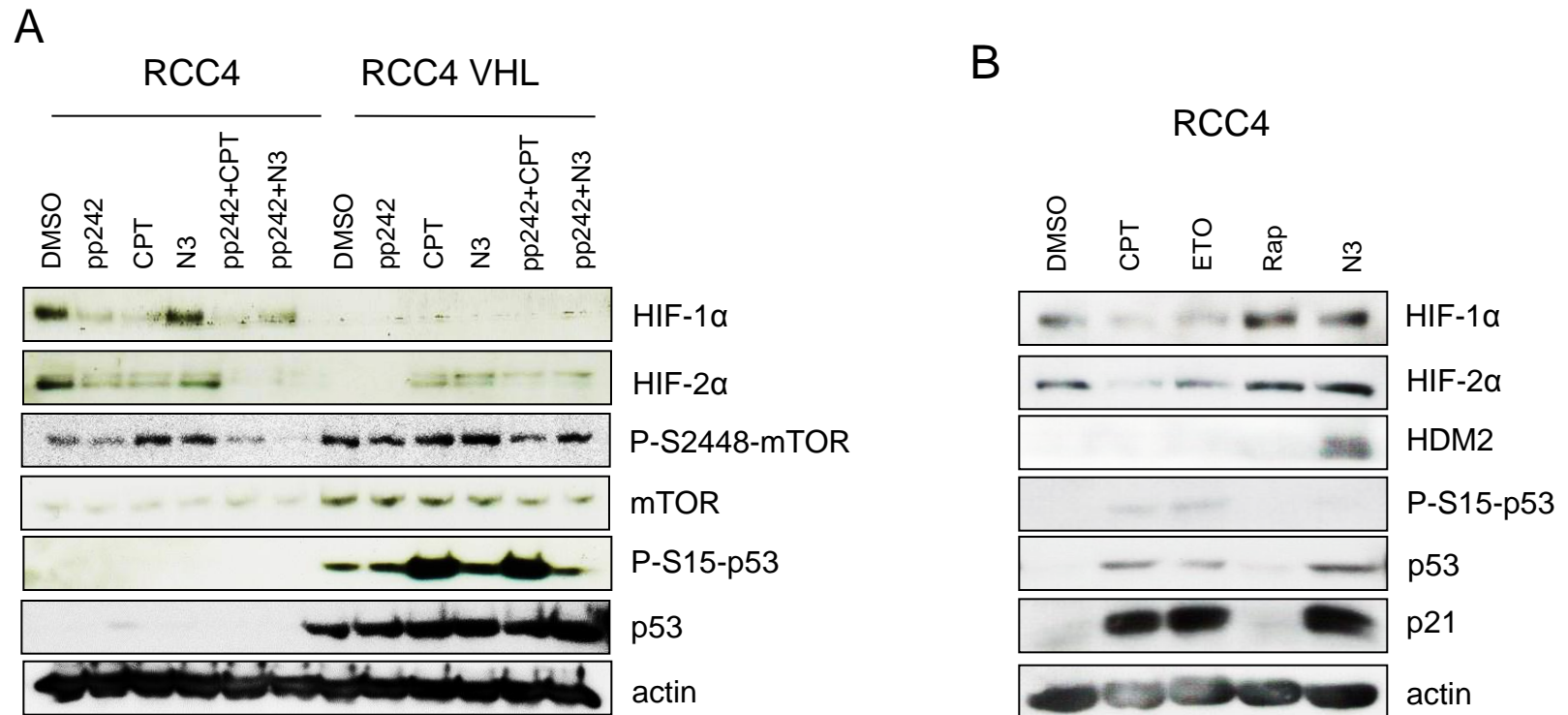
Supplementary Fig 2



Supplementary Fig 3

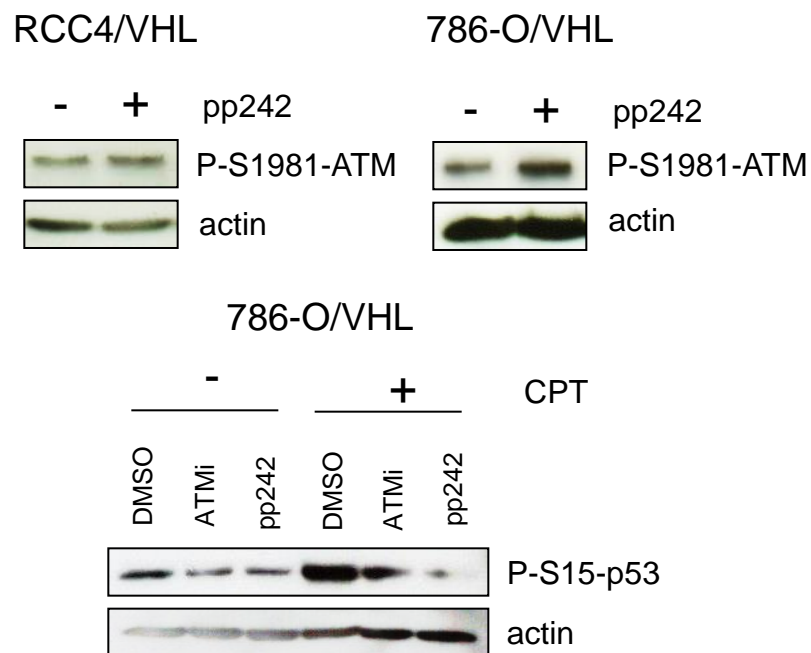


Supplementary Fig 4

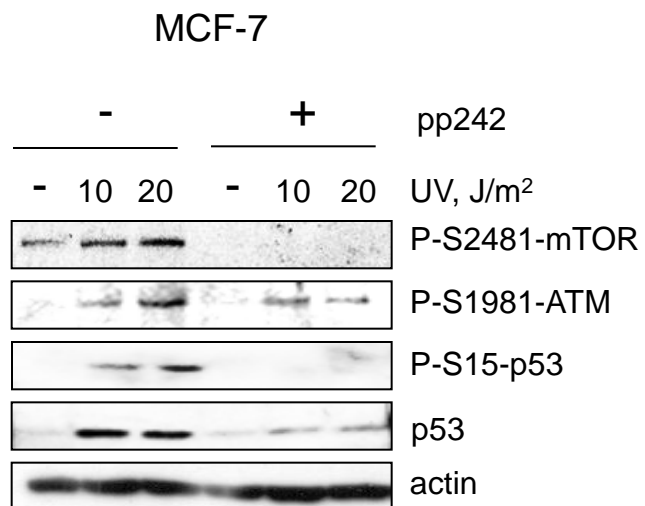


Supplementary Fig 5

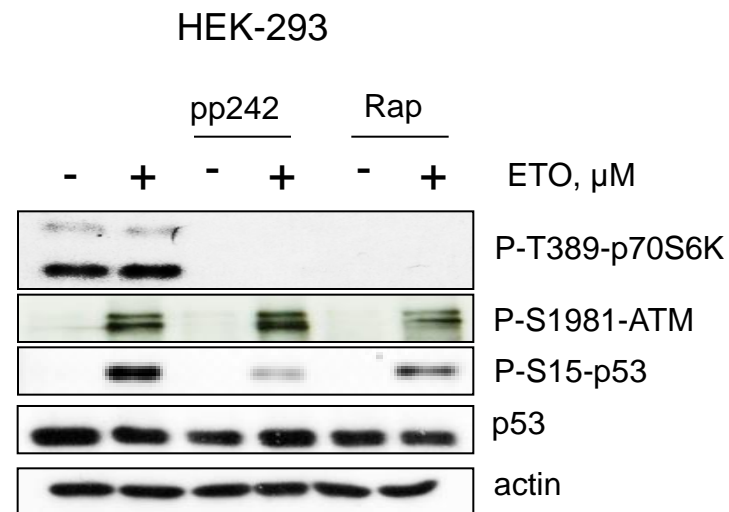
A



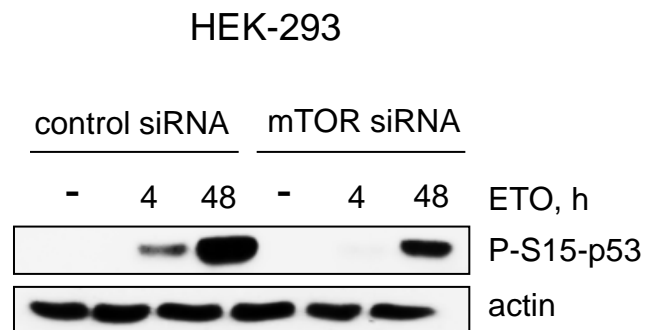
B



C



D



Supplementary Fig 6

A

421 ggctcttta gaggatgcat gtcatta **tggaacctgctgccactgtcc** ctgttcccc
 481 agctgtgact tcgagggagg tctggggatc tgagtctgtc caaacccacg gctttgctgt
 541 tgggataaaa actgtccttt tgattttaga aggaggaggg aaaaaaggtt tcccagcatg
 601 tgtgtgtgc cagtcttga aattcatccg tcttgaatt ccaccctcca tccccagaaa
 661 aactggagta aaacaaaaag aggagatgga caaagtgtgt atttgatggc atcccctggg
 721 aagagactct aaatttatcc cataggtctt actggggcac tgtgagcgt tgggtggaga
 781 acaaacaaaa attctgggtg ctcagttgtc taacctgaaa aatgggacta gcggaaaaag
 841 ccaatgtgtt ccatgcacct ttgtcttct ttattaaggc atgatgtcac ctgtacagta
 901 actgcctgt gtgtactca ggggggatt tcaaggtag atagacagga aatgttttg
 961 aaaatgtaa cacattatta aatgtgaagt attatctgat tcttgttcg aatggcattt
 1021 ccttctcage accaccttcc ttgcatatc acttaacct gtacaagaac accttttgc
 1081 cctaaatgaa gacaccccc caaaaaaag agtcccagaa aatatgtccc tgctgtgcg
 1141 ggaataaat agaatttct gagggtcatt cctcttct atgtaggca acattcctg
 1201 acctcctcg gccccaagc caggttgcg tttttctgc catttagaag ggtttcctt
 1261 tttgtctag taaaacatca gccctgtag ctctcatct cccctgggt tcttctc**cc**
p53 DBS2_(-704 to -726)
 1321 **gccatgtctt aagattgggtg g**caccgacca atcttaagat ttaagttctg tgtgaaaaac
 1381 accttgcct tcaatcagt ttatcagcct cctccgagg ggaagtgtgg acacacaaaa
 1441 gaacttatcg gggcttctca tcagtatag ggaaaagact ggcattgtcc taaacgagct
 1501 ctgatgttat ttttaagctc ctttcttgc caatccctca cggatcttcc tccgatagat
 1561 gcaaagaact tcagcaaaaa agaccgcag gaaggggctt gaagagaaaa gtacgttgat
 1621 ctgcaaaaat agtctgacct ccagtgtgg ggcagtgcg agggagagca ttccctgtt
 1681 tgactgagac tagaatcgga gagacataaa aggaaaatga agcgagcaac aattaaaaaa
 1741 aattccccgc acacaacaat acaatctatt taaactgtgg ctacacttt tcataccaat
 1801 ggtatgactt ttttctgga gtcccctct ctgattctg aactccgggg ctggcagctt
 1861 gcaaagggga agcggactcc agcactgcac gggcaggttt agcaaaggtc tctaatgggt
p53 DBS1_(-189 to -211)
 1921 atttctttt tct**tagccct gccccgaat tctcag**acgg cgggcgtctg cctctgaagt
HRE₍₋₁₁₈₎
 1981 tagcagtgat ttctttcgg gctggcctt atctccggt g**cacgtt**gcc tgttggtag
 2041 taataacaca ataacattgt ctggggctgg aataaagtcg gagctgttta cccccactt
 2101 aataggggtt caataaaaa agccggcaga gagctgtcca agtc**a**gacgc gcctctgcat
 +1
 →start

B

human	T	A	G	C	C	T	G	C	C	C	C	C	c	g	a	A	T	T	G	T	C	A	G	
rat	T	A	G	C	C	T	G	C	C	C	C	C	C	T	G	G	A	T	T	G	T	C	A	G
mouse	T	A	G	C	C	T	G	C	C	C	C	C	C	T	G	G	A	T	T	G	T	C	A	G

Supplementary Fig 6

